



PRIMHD summary report – HoNOS

Health of the Nation Outcomes Scales – working age adults report for New Zealand

tepou.co.nz

This report summarises national Programme for the Integration of Mental Health Data (PRIMHD) data submitted by Te Whatu Ora Districts. In particular, it presents Health of the Nation Outcomes Scale (HoNOS) data for working aged adults, from services where HoNOS is the primary measure.

This report is organised into three major sections that provide information about:

- 1. Outcomes related information:** This provides indications about what changes have occurred for service users between entering and leaving the service. Outcome is assessed by comparing the group admitted and the group discharged from the service in the same time period. This should provide a reasonable indication of outcomes achieved unless the service user mix has changed significantly over the usual period for which service is delivered.
- 2. Service related information:** This provides information about the services, such as the overall severity of service users who use different services.
- 3. Collection completion and validity:** This details the completeness of the data set provided by your mental health services. This is important because it indicates how valid and reliable the data sets are likely to be. The less complete the data set, the less valid the information is likely to be.

In many cases the data is presented graphically for New Zealand, and then presented as a table for the individual team types (see team type classification factsheet).

The time period covered differs for the different data presented. See the title or the notes under the graphs or tables for information about the time period covered. Unless otherwise stated, the notes under the graphs also apply to the corresponding table.

For all graphs and tables, if there are less than twenty cases in the data set, then the information is not presented. This is because small samples frequently provide inaccurate and potentially misleading results. See the notes and user guide for other important information about the graphs and tables.

Where appropriate, the statistical **confidence interval** is presented. This is shown by error bars (small lines above and below the average) on the graphs, and a score range in some tables. As a rule of thumb, if the confidence intervals of two data points do not overlap, the two points can be considered to be significantly different. If the confidence intervals of the data points do overlap, we assume the points are not significantly different. It is important to note that statistical significance may not indicate a clinically significant difference.

See the associated user guide for more information about how to understand and use the data presented in this report.

Data for tables and graphs was extracted 26 June 2025 from PRIMHD by Te Whatu Ora, then analysed and formatted by Te Pou.

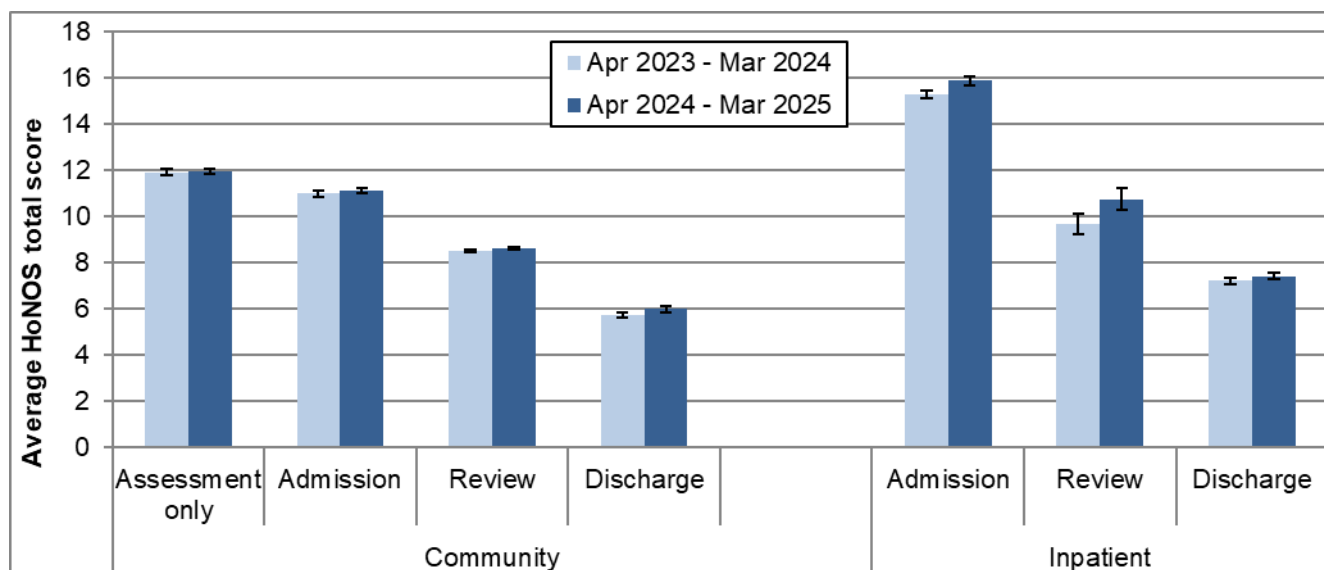
PLEASE NOTE:

For this period a few Te Whatu Ora Districts have incomplete data which will affect New Zealand totals.

1. Outcomes – changes in service user status

This section presents HoNOS data indicating the status of service users at different stages of their contact with Te Whatu Ora District mental health services. Graph and Table 1, and Graph 2 show results from HoNOS total scores. Graphs and Tables 3 to 5b show results related to the percentage of HoNOS items in the clinical range. Table 6 shows results from the Index of Severity derived from HoNOS scores.

Graph 1: Average HoNOS total score (12 items) by collection type: New Zealand, Apr 2023 - Mar 2024 and Apr 2024 - Mar 2025



Notes: Error bars indicate the confidence intervals around the data point. If error bars overlap, the data points are not significantly different. Community discharge does not include discharge to an inpatient unit.

Interpretation: Decrease between admission and discharge is an indication of the outcomes achieved by the service user and service. The greater the decrease between admission and discharge, and the lower the average HoNOS score at discharge, the more positive the outcome.

Target: A greater decrease from admission to discharge and lower average rating at discharge.

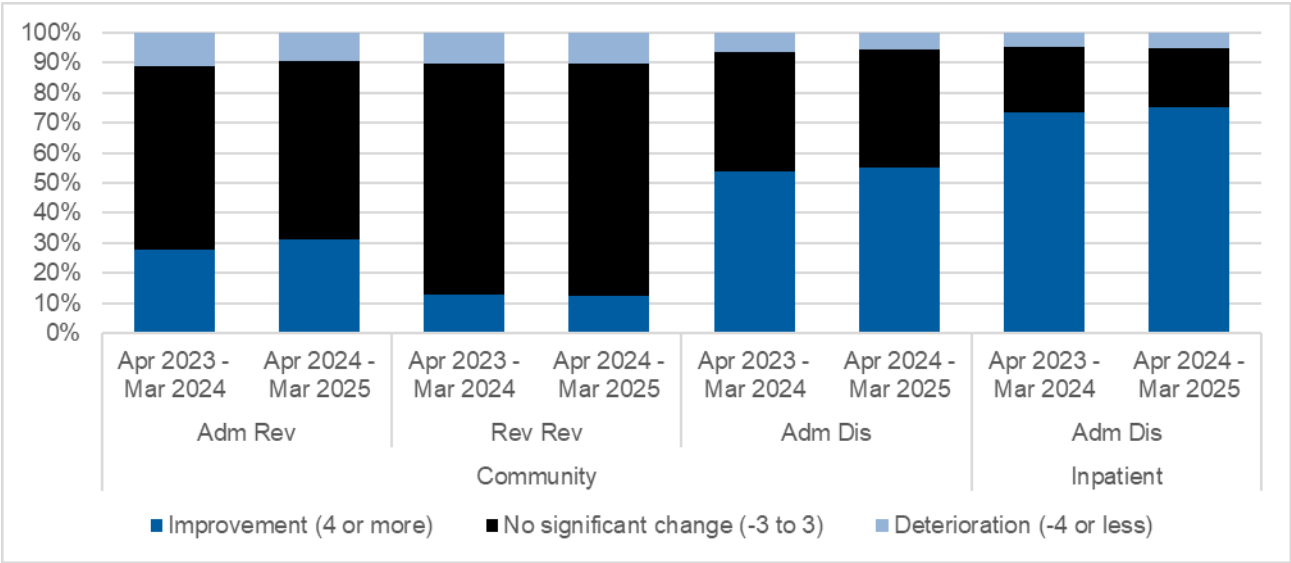
Table 1: Average HoNOS total score (12 items), by collection type and team: New Zealand, Apr 2024 - Mar 2025

Team type	Assessment only			Admission			Review			Discharge		
	N	Mean	CI	N	Mean	CI	N	Mean	CI	N	Mean	CI
Community services												
Alcohol and drug team	348	13.9	13.3-14.6	219	11.8	11.0-12.7	1,128	8.0	7.7-8.3	127	8.2	7.2-9.3
Child and youth team	77	12.1	10.8-13.4	44	11.6	10.0-13.2	230	10.1	9.3-11.0	58	5.9	4.6-7.2
Co-existing problem team							26	11.9	10.2-13.6			
Community team	8,987	12.0	11.9-12.2	7,622	11.3	11.2-11.4	30,304	8.5	8.4-8.6	5,211	6.1	5.9-6.2
Early intervention team				197	9.8	9.0-10.6	728	8.3	7.9-8.7	111	5.9	5.0-6.8
Eating disorders team	44	11.7	10.0-13.4	286	12.4	11.7-13.1	477	10.9	10.3-11.4	147	6.7	5.8-7.6
Forensic team				24	10.3	7.7-12.9	97	8.6	7.3-9.8	26	6.7	3.6-9.9
Kaupapa Māori team	60	10.5	8.8-12.3	274	11.0	10.2-11.7	2,064	9.8	9.5-10.0	148	7.2	6.2-8.3
Maternal mental health team	155	8.8	7.9-9.6	911	9.3	9.0-9.6	1,019	7.5	7.2-7.8	765	4.0	3.8-4.3
Needs assessment and service coordination team	108	12.5	11.4-13.7	45	11.4	9.6-13.1	741	11.2	10.8-11.6	21	14.0	11.0-17.0
Older people team	21	10.7	8.3-13.2	64	11.6	10.3-13.0	75	11.0	9.6-12.5	45	8.7	7.0-10.4
Pacific people team				170	9.3	8.4-10.1	899	7.0	6.6-7.3	78	5.4	4.4-6.4
Specialty team	511	10.7	10.2-11.2	95	13.9	12.8-15.1	302	12.3	11.5-13.0	29	9.3	6.5-12.2
Total	10,358	12.0	11.9-12.1	9,968	11.1	11.0-11.2	38,108	8.6	8.6-8.7	6,773	6.0	5.9-6.1
Inpatient services												
Alcohol and drug team				192	11.4	10.7-12.1				182	9.1	8.4-9.8
Eating disorders team				21	14.0	11.7-16.3						
Forensic team				37	13.3	10.6-16.0	148	11.7	10.9-12.6	43	3.7	2.5-4.8
Inpatient team				7,536	16.1	15.9-16.2	890	10.5	10.0-11.1	5,791	7.4	7.2-7.5
Maternal mental health team				102	12.1	11.0-13.3				67	7.4	6.0-8.7
Older people team				32	15.0	12.6-17.5				21	11.0	7.7-14.4
Total				7,923	15.9	15.7-16.1	1,061	10.8	10.3-11.2	6,119	7.4	7.3-7.6

Notes: N = number of collections in period. Average = average HoNOS (12 item) score, CI = confidence interval for average score. Community discharge does not include discharge to an inpatient unit.

Interpretation: If confidence intervals for two scores do not overlap, then the scores have a statistically significant difference. It is important to note that statistical significance may not indicate a clinically significant difference.

Graph 2: Difference in HoNOS total score (12 items) for matched pairs by pair type and setting, New Zealand, Apr 2023 - Mar 2024 and Apr 2024 - Mar 2025



Notes: Shows the difference of the matched pair between the start and end HoNOS total score. Community admission to discharge includes discharge no further care and discharge other.

Interpretation: The graphs compare two time periods. Dark blue band indicates percentage improvement within the given time period, while black band indicates no significant change and light blue deterioration. Improvement = 4 or more, no significant change = -3 to 3 and deterioration = -4 or less.

Target: A greater percentage increase in improvement for both community and inpatient settings and a smaller percentage in deterioration.

Table 2: Difference in HoNOS total score (12 items) for matched pairs by pair type and team, community New Zealand, Apr 2024 - Mar 2025

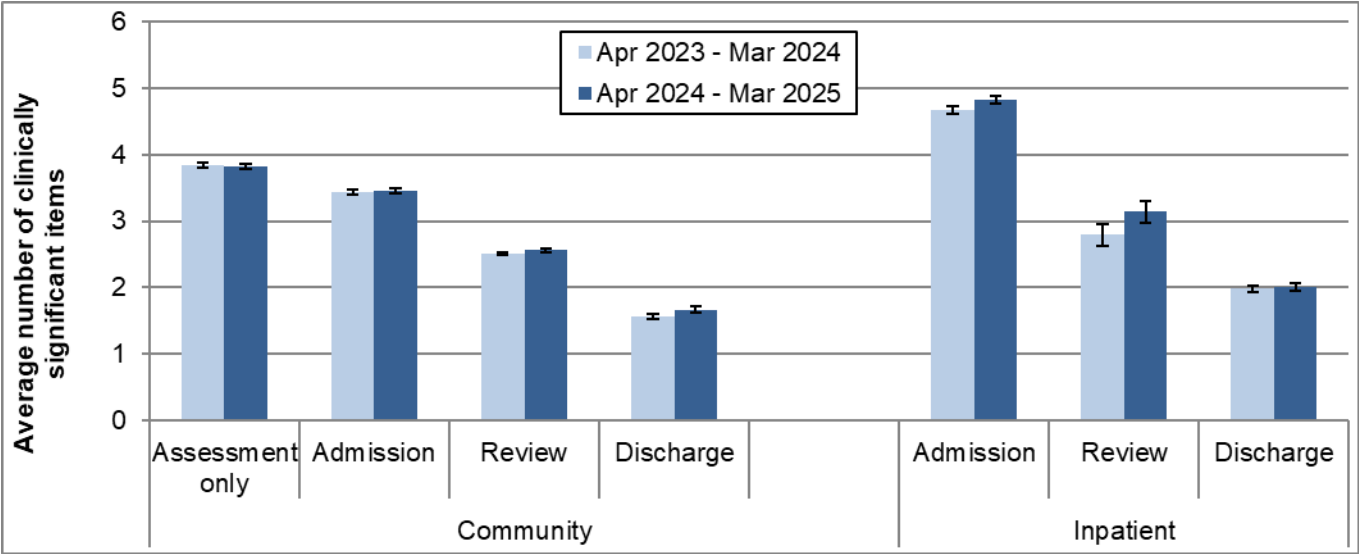
Team Type	Com Adm Rev				Com Rev Rev				Com Adm Dis			
	↓ Det	No SC	↑ Imp	N	↓ Det	No SC	↑ Imp	N	↓ Det	No SC	↑ Imp	N
Alcohol and drug team	3%	68%	30%	37	12%	69%	19%	364	8%	55%	37%	49
Child and youth team					8%	73%	20%	66				
Community team	9%	59%	32%	1,661	10%	78%	12%	11,912	6%	39%	55%	2,285
Early intervention team	7%	53%	40%	68	11%	71%	18%	263	9%	32%	59%	68
Eating disorders team	16%	52%	32%	62	9%	78%	13%	126	2%	43%	55%	94
Forensic team					12%	74%	15%	34				
Kaupapa Māori team	15%	55%	30%	91	13%	73%	14%	1,068	10%	41%	49%	71
Maternal mental health team	6%	67%	27%	246	6%	78%	16%	320	1%	36%	63%	400
Needs assessment and service coordination team					5%	88%	7%	172				
Older people team					4%	88%	8%	24	7%	52%	41%	27
Pacific people team	13%	51%	36%	55	14%	69%	17%	406	7%	44%	48%	54
Specialty team					13%	73%	14%	94				
Total	9%	59%	31%	2,260	10%	77%	13%	14,856	6%	39%	55%	3,083

Notes: Shows the difference of the matched pair between the start and end HoNOS total score. Community admission to discharge includes discharge no further care and discharge other.

Interpretation: Improvement (↑Imp) = 4 or more, no significant change (No SC) = -3 to 3 and deterioration (↓Det) = -4 or less.

Target: A greater percentage increase in improvement for community setting and a smaller percentage in deterioration.

Graph 3: Average number of clinically significant HoNOS items by collection type: New Zealand, Apr 2023 - Mar 2024 and Apr 2024 - Mar 2025



Notes: Average number clinically significant items = the average number of items in the clinical range (2, 3 or 4) per collection. Community discharge does not include discharge to an inpatient unit.

Interpretation: Points are significantly different if error bars don't overlap. A decrease between admission and discharge is an indication of the outcomes achieved by the service and service user. A greater decrease between admission and discharge indicates a better outcome. A lower admission score could be indication of service users seeking out and being engaged by services at a lower level of severity.

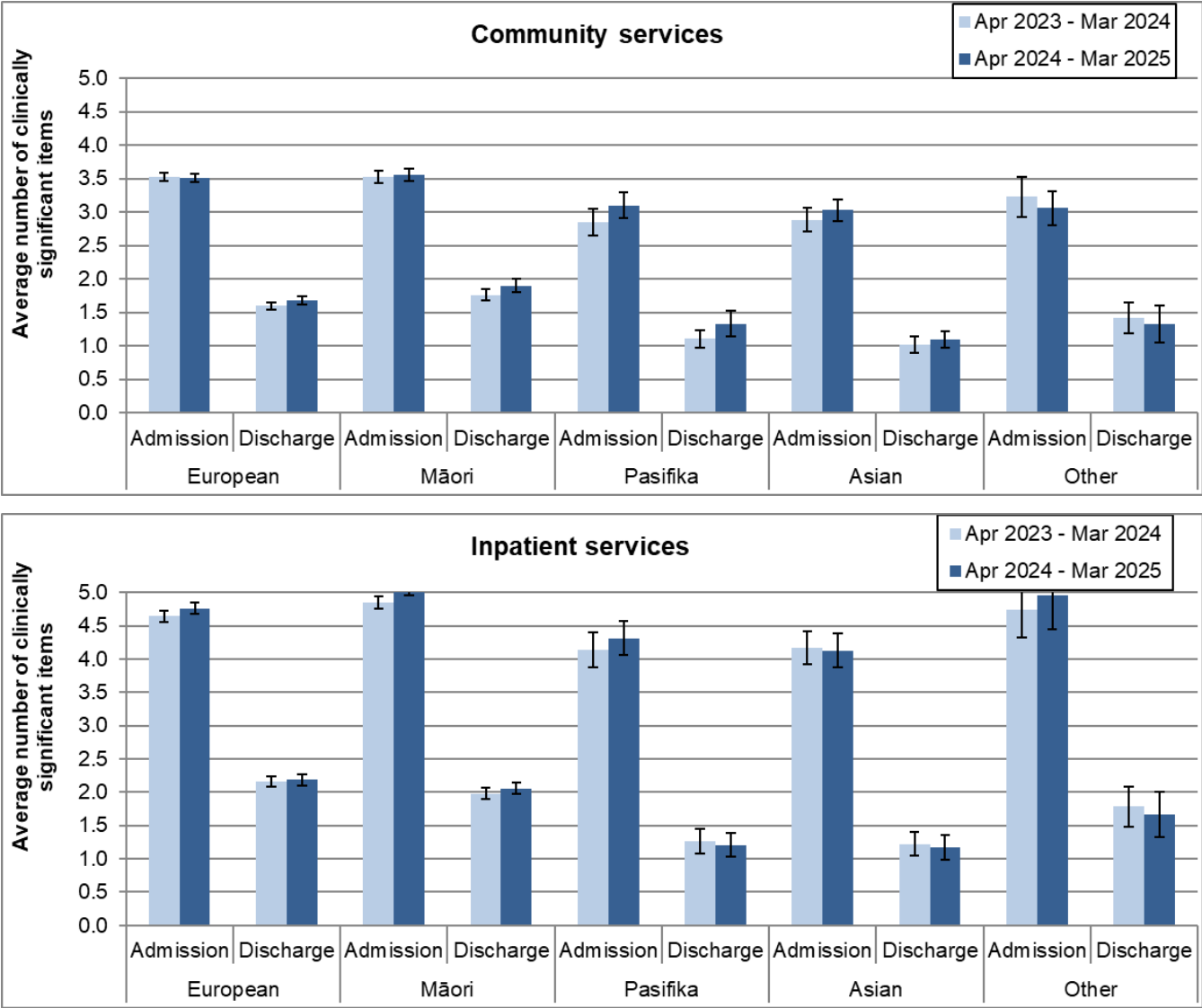
Target: A greater decrease from admission to discharge and smaller percentage in clinical range at discharge

Table 3: Average number of clinically significant HoNOS items by collection type and team: New Zealand, Apr 2024 - Mar 2025

Team type	Assessment only			Admission			Review			Discharge		
	N	Mean	CI	N	Mean	CI	N	Mean	CI	N	Mean	CI
Community services												
Alcohol and drug team	348	4.4	4.2-4.7	219	3.7	3.3-4.0	1,128	2.5	2.4-2.6	127	2.4	2.0-2.8
Child and youth team	77	4.1	3.6-4.6	44	3.7	3.1-4.4	230	3.2	2.8-3.5	58	1.8	1.3-2.4
Co-existing problem team							26	4.0	3.3-4.7			
Community team	8,987	3.9	3.8-3.9	7,622	3.5	3.5-3.6	30,304	2.5	2.5-2.5	5,211	1.7	1.7-1.8
Early intervention team				197	3.1	2.8-3.5	728	2.5	2.3-2.7	111	1.6	1.3-2.0
Eating disorders team	44	3.6	3.0-4.2	286	3.7	3.5-4.0	477	3.3	3.1-3.5	147	1.8	1.5-2.1
Forensic team				24	2.8	1.8-3.7	97	2.4	1.9-2.8	26	2.3	1.1-3.5
Kaupapa Māori team	60	3.2	2.6-3.8	274	3.1	2.8-3.4	2,064	2.8	2.7-2.9	148	1.9	1.5-2.3
Maternal mental health team	155	2.9	2.5-3.2	911	3.0	2.8-3.1	1,019	2.3	2.2-2.4	765	1.0	0.9-1.1
Needs assessment and service coordination team	108	4.0	3.5-4.4	45	3.2	2.5-3.9	741	3.5	3.3-3.7	21	4.3	3.1-5.6
Older people team	21	3.4	2.3-4.4	64	3.7	3.2-4.2	75	3.3	2.8-3.8	45	2.4	1.8-3.0
Pacific people team				170	2.9	2.5-3.2	899	1.9	1.8-2.1	78	1.4	1.1-1.8
Specialty team	511	3.2	3.1-3.4	95	4.5	4.1-5.0	302	3.9	3.6-4.3	29	2.8	1.8-3.8
Total	10,358	3.8	3.8-3.9	9,968	3.5	3.4-3.5	38,108	2.6	2.5-2.6	6,773	1.7	1.6-1.7
Inpatient services												
Alcohol and drug team				192	3.0	2.8-3.3				182	2.7	2.4-2.9
Eating disorders team				21	4.2	3.4-5.1						
Forensic team				37	4.0	3.0-5.0	148	3.8	3.4-4.1	43	0.7	0.4-1.0
Inpatient team				7,536	4.9	4.8-5.0	890	3.0	2.8-3.2	5,791	2.0	1.9-2.0
Maternal mental health team				102	3.7	3.3-4.1				67	2.1	1.6-2.6
Older people team				32	4.4	3.6-5.2				21	3.2	2.0-4.5
Total				7,923	4.8	4.8-4.9	1,061	3.1	3.0-3.3	6,119	2.0	2.0-2.1

Notes: N = number of collections in period. Average = average number of HoNOS items in the clinically significant range (ie scoring 2, 3, or 4). CI = confidence interval for average score. Community discharge does not include discharge to an inpatient unit. **Interpretation:** If confidence intervals for two scores do not overlap, then the scores have a statistically significant difference. It is important to note that statistical significance may not indicate a clinically significant difference

Graph 4: Average number of clinically significant HoNOS items at admission and discharge by ethnic group: New Zealand, Apr 2023 - Mar 2024 and Apr 2024 - Mar 2025

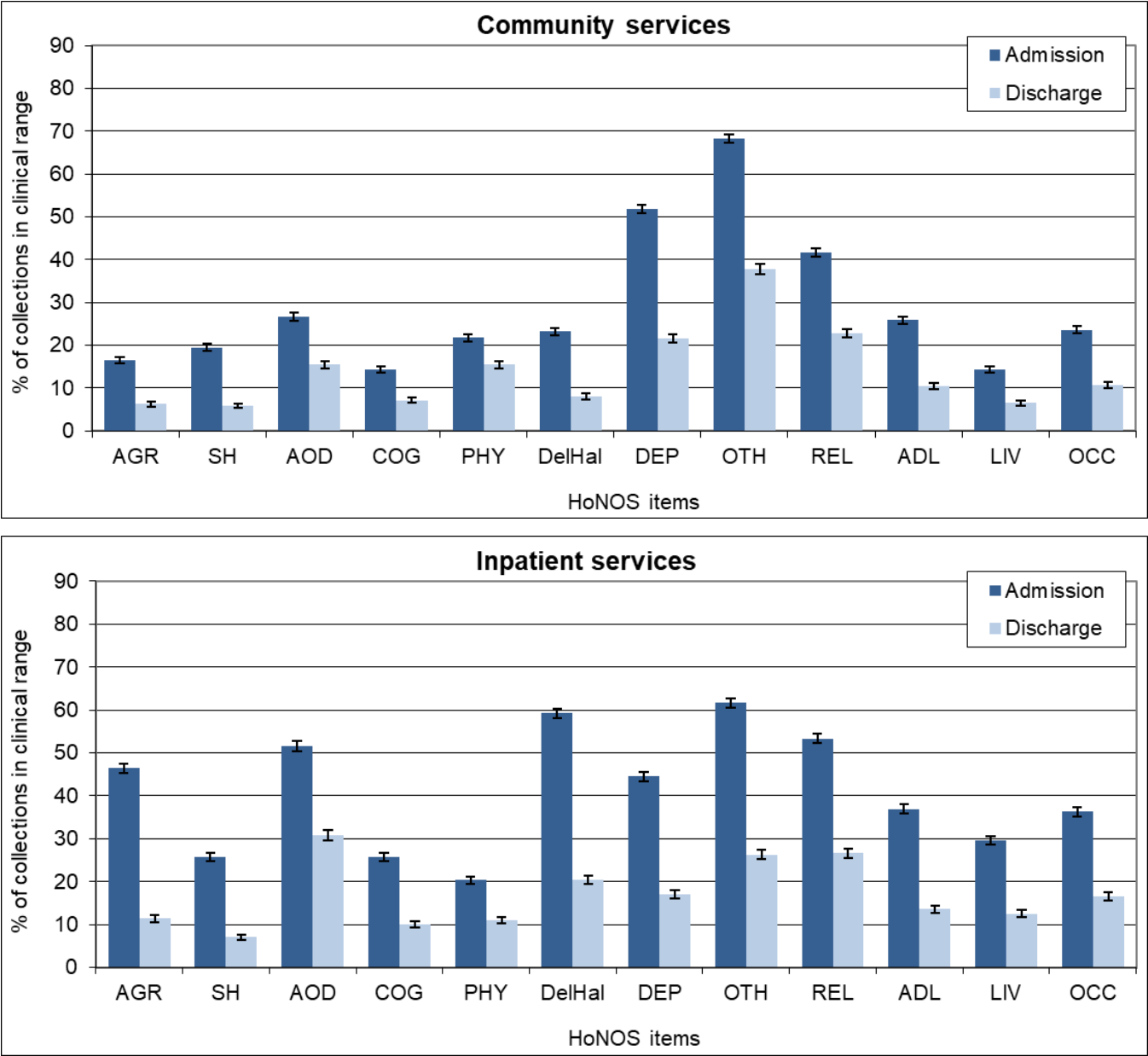


Notes: Average number of HoNOS items in the clinical range (2, 3 or 4). Community discharge does not include discharge to an inpatient unit.

Interpretation: Points are significantly different if error bars don't overlap. Decrease between admission and discharge is an indication of the outcomes achieved by the service and service user. A greater decrease between admission and discharge indicates a better outcome. A lower admission score could be indication of service users seeking out and being engaged by services at a lower level of acuity.

Target: A greater decrease from admission to discharge and smaller percentage in clinical range at discharge.

Graph 5a: Percentage of collections in clinical range on each HoNOS item (admission and discharge collections): New Zealand, Apr 2024 - Mar 2025



Notes: Percentage of service users in the clinical range (2, 3 or 4) for each HoNOS item. Community discharge does not include discharge to an inpatient unit.

Interpretation: The longer the bar, the more prevalent the difficulty measured by the item is amongst service users. A greater decrease in the length of the bar from admission to discharge suggests a better outcome for the difficulty measured by the item. Items that show medium to high frequency and less change may suggest possible targets for service improvement.

Target: A greater decrease from admission to discharge and smaller percentage in clinical range at discharge.

Table 5a: Percentage of collections in clinical range on each HoNOS item (admission and discharge collections) by team: New Zealand Apr 2024 - Mar 2025

Community services

First 6 HoNOS items														
Team type	N		AGR		SH		AOD		COG		PHY		DelHal	
	Adm	Disch	Adm	Disch	Adm	Disch	Adm	Disch	Adm	Disch	Adm	Disch	Adm	Disch
Alcohol and drug team	219	127	16%	9%	15%	3%	67%	50%	15%	7%	22%	17%	14%	4%
Child and youth team	44	58	32%	5%	45%	5%	23%	7%	9%	7%	18%	21%	16%	3%
Community team	7,613	5,204	17%	6%	21%	7%	28%	16%	14%	7%	22%	16%	25%	9%
Early intervention team	197	111	20%	7%	7%	3%	33%	24%	18%	12%	9%	7%	53%	8%
Eating disorders team	286	147	10%	3%	16%	9%	13%	8%	20%	6%	46%	16%	10%	3%
Forensic team	24	26	25%	12%	8%	12%	33%	23%	13%	12%	0%	8%	29%	8%
Kaupapa Māori team	274	148	15%	7%	13%	7%	33%	22%	11%	9%	17%	20%	32%	11%
Maternal mental health team	911	765	10%	4%	13%	2%	7%	4%	10%	3%	19%	7%	4%	1%
Needs assessment and service coordination team	45	21	11%	24%	7%	5%	31%	29%	31%	43%	18%	33%	39%	43%
Older people team	64	45	34%	13%	5%	0%	5%	2%	69%	62%	44%	36%	28%	13%
Pacific people team	170	78	11%	6%	12%	0%	26%	13%	18%	12%	17%	18%	38%	13%
Specialty team	95	29	42%	10%	22%	7%	52%	14%	21%	17%	26%	24%	22%	14%
Total	9,955	6,765	17%	6%	19%	6%	27%	15%	14%	7%	22%	15%	23%	8%

Second 6 HoNOS items												
Team type	DEP		OTH		REL		ADL		LIV		OCC	
	Adm	Disch	Adm	Disch	Adm	Disch	Adm	Disch	Adm	Disch	Adm	Disch
Alcohol and drug team	38%	25%	61%	43%	48%	31%	27%	12%	22%	17%	23%	20%
Child and youth team	65%	21%	76%	43%	48%	38%	16%	16%	18%	5%	11%	10%
Community team	51%	23%	67%	37%	43%	22%	26%	10%	15%	7%	26%	11%
Early intervention team	31%	13%	48%	29%	41%	32%	25%	15%	10%	4%	20%	8%
Eating disorders team	59%	32%	96%	64%	37%	25%	37%	9%	8%	3%	20%	9%
Forensic team	13%	19%	33%	31%	46%	42%	25%	15%	17%	20%	33%	32%
Kaupapa Māori team	39%	18%	57%	34%	40%	32%	24%	12%	13%	9%	21%	11%
Maternal mental health team	74%	16%	89%	41%	34%	17%	19%	3%	8%	4%	9%	2%
Needs assessment and service coordination team	9%	19%	44%	65%	33%	48%	40%	67%	26%	24%	32%	38%
Older people team	31%	14%	38%	18%	27%	18%	56%	53%	6%	0%	27%	11%
Pacific people team	31%	6%	41%	15%	42%	29%	21%	8%	16%	12%	15%	13%
Specialty team	54%	24%	64%	41%	51%	48%	36%	28%	26%	14%	41%	38%
Total	52%	22%	68%	38%	42%	23%	26%	10%	14%	6%	24%	11%

Inpatient services

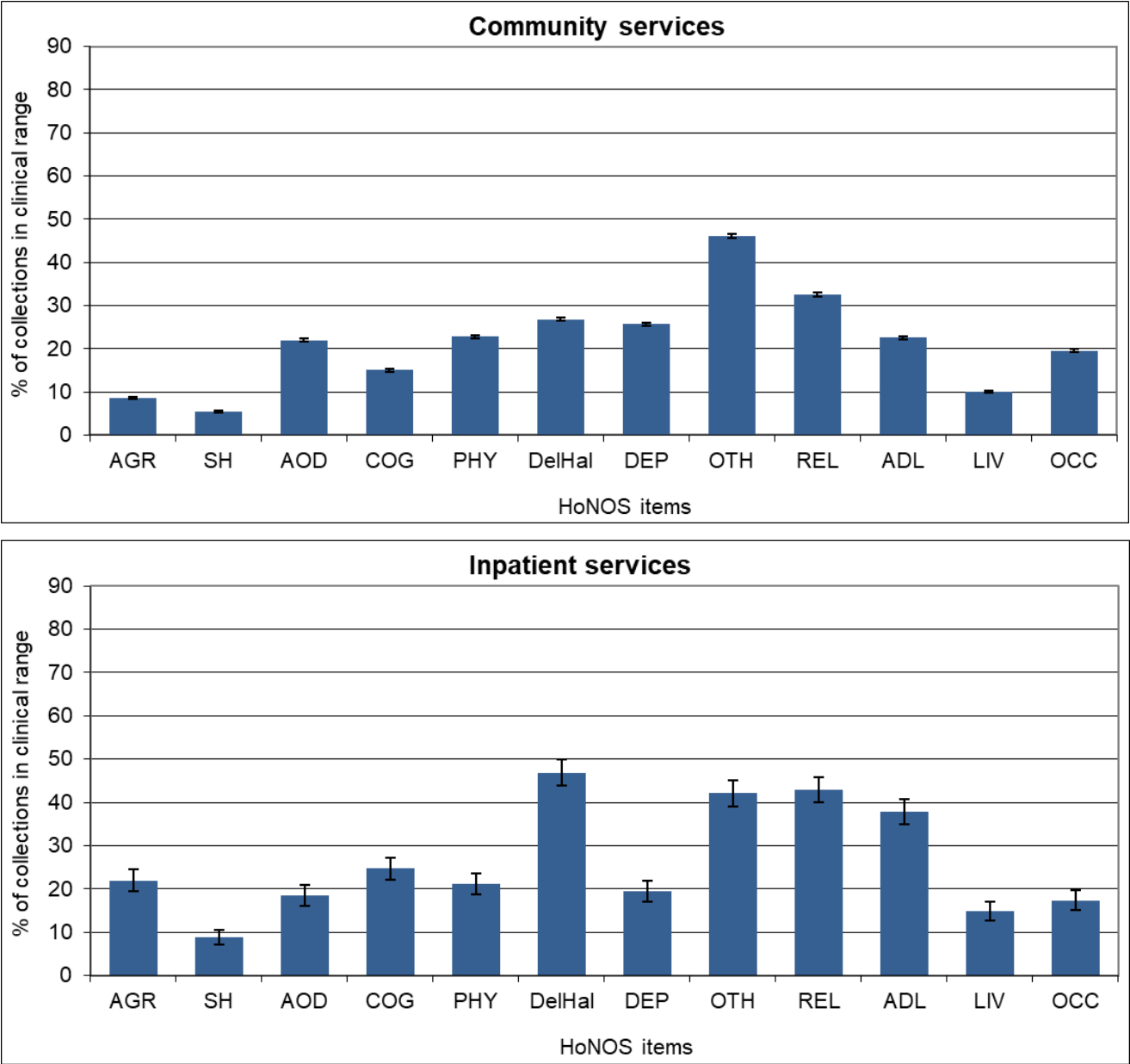
First 6 HoNOS items														
Team type	N		AGR		SH		AOD		COG		PHY		DelHal	
	Adm	Disch	Adm	Disch	Adm	Disch	Adm	Disch	Adm	Disch	Adm	Disch	Adm	Disch
Alcohol and drug team	192	182	8%	14%	7%	1%	99%	98%	7%	8%	37%	31%	6%	5%
Eating disorders team	21		24%		10%		5%		29%		62%		0%	
Forensic team	37	43	36%	2%	5%	0%	36%	23%	27%	2%	27%	0%	73%	14%
Inpatient team	7,518	5,789	48%	11%	26%	7%	51%	29%	26%	10%	20%	10%	61%	21%
Maternal mental health team	102	67	20%	10%	25%	10%	17%	9%	13%	10%	20%	12%	27%	9%
Older people team	32	21	56%	24%	3%	0%	10%	5%	71%	67%	53%	57%	47%	33%
Total	7,904	6,117	46%	11%	26%	7%	52%	31%	26%	10%	20%	11%	59%	20%
Second 6 HoNOS items														
Team type	DEP		OTH		REL		ADL		LIV		OCC			
	Adm	Disch	Adm	Disch	Adm	Disch	Adm	Disch	Adm	Disch	Adm	Disch		
Alcohol and drug team	49%	40%	45%	49%	20%	9%	9%	6%	15%	5%	50%	22%		
Eating disorders team	71%		100%		33%		43%		5%		43%			
Forensic team	19%	2%	49%	7%	47%	14%	27%	0%	29%	0%	31%	5%		
Inpatient team	44%	16%	62%	25%	54%	27%	38%	14%	30%	13%	36%	17%		
Maternal mental health team	73%	39%	74%	43%	48%	25%	32%	19%	9%	9%	17%	12%		
Older people team	23%	24%	53%	33%	42%	19%	53%	48%	13%	5%	22%	11%		
Total	44%	17%	62%	26%	53%	27%	37%	14%	30%	12%	36%	17%		

Notes: Percentage of service users in the clinical range (2, 3 or 4) for each HoNOS item. Community discharge does not include discharges to an inpatient unit.

Interpretation: The higher the percentage, the more prevalent the difficulty measured by the item is amongst service users. A greater decrease between admission and discharge suggests a better outcome for the difficulty measured by the item. Items that show medium to high frequency and less change may suggest possible targets for service improvement.

Target: A greater decrease from admission to discharge and smaller percentage in clinical range at discharge.

Graph 5b: Percentage of collections in clinical range on each HoNOS item (review collections): New Zealand, Apr 2024 - Mar 2025



Notes: Percentage of service users in the clinical range (2, 3 or 4) for each HoNOS item on review collections. Due to most admission being less than 91 days, the data set for review collections in inpatient settings is relatively small.

Interpretation: The longer the bar, the more prevalent the difficulty measured by the item is amongst service users.

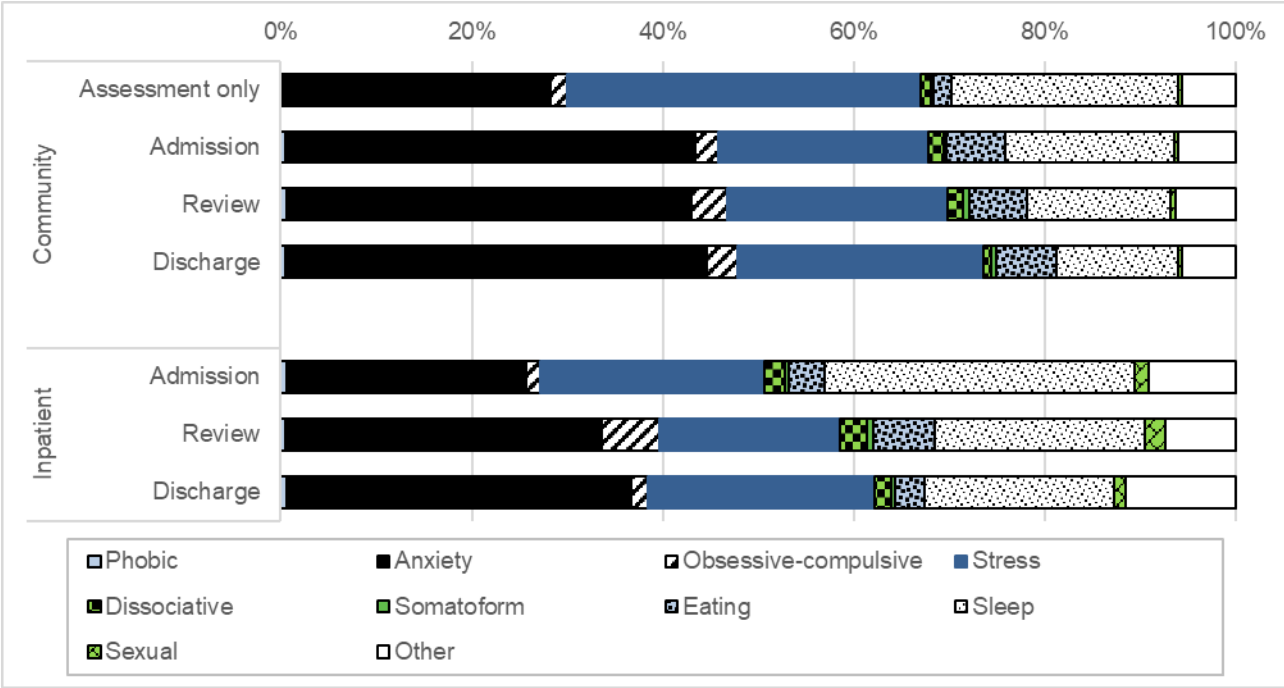
Table 5b: Percentage of collections in clinical range on each HoNOS item (review collections) by team: New Zealand, Apr 2024 - Mar 2025

Team type	N	AGR	SH	AOD	COG	PHY	DeIHaI	DEP	OTH	REL	ADL	LIV	OCC
Community services													
Alcohol and drug team	1,128	7%	4%	41%	12%	25%	15%	21%	43%	29%	19%	10%	22%
Child and youth team	230	14%	20%	12%	21%	21%	22%	41%	61%	43%	22%	18%	21%
Co-existing problem team	26	15%	8%	96%	19%	32%	23%	54%	50%	46%	23%	12%	19%
Community team	30,292	9%	5%	21%	14%	23%	27%	25%	45%	32%	22%	10%	19%
Early intervention team	728	9%	3%	31%	18%	9%	30%	24%	39%	36%	26%	9%	19%
Eating disorders team	477	7%	13%	11%	18%	39%	14%	51%	87%	39%	31%	5%	17%
Forensic team	97	12%	1%	36%	13%	14%	29%	7%	29%	40%	22%	10%	22%
Kaupapa Māori team	2,064	10%	6%	27%	20%	26%	31%	24%	40%	33%	26%	14%	24%
Maternal mental health team	1,019	7%	5%	4%	8%	14%	3%	50%	81%	34%	11%	7%	6%
Needs assessment and service coordination team	741	12%	7%	24%	35%	27%	48%	23%	50%	42%	40%	15%	26%
Older people team	75	16%	0%	3%	70%	48%	15%	28%	32%	27%	56%	9%	24%
Pacific people team	899	5%	5%	19%	11%	17%	29%	14%	22%	24%	22%	11%	16%
Specialty team	302	14%	8%	27%	27%	46%	29%	38%	68%	46%	40%	19%	33%
Total	38,092	9%	6%	22%	15%	23%	27%	26%	46%	33%	23%	10%	19%
Inpatient services													
Forensic team	148	20%	6%	13%	36%	29%	71%	17%	57%	64%	49%	3%	12%
Inpatient team	889	22%	9%	20%	22%	20%	43%	20%	39%	39%	36%	17%	18%
Total	1,060	22%	9%	19%	25%	21%	47%	19%	42%	43%	38%	15%	17%

Notes: Percentage of service users in the clinical range (2, 3 or 4) for each HoNOS item on review collections. Due to most admission being less than 91 days, the data set for review collections in inpatient settings is relatively small.

Interpretation: The higher the percentage, the more prevalent the difficulty measured by the item is amongst service users.

Graph 5c: Distribution of other mental health and behavioural problems in the clinical range by collection type: New Zealand, Apr 2024 - Mar 2025



Notes: This is for service users in the clinical range (2, 3 or 4) for other mental health and behavioural problems item.

Interpretation: This shows the distribution of what is selected for other mental health and behavioural problems. Other mental health and behavioural problems provides clinicians with the opportunity to rate the most severe clinical problem not covered elsewhere from the following list: phobic, anxiety, obsessive-compulsive, stress, dissociative, somatoform, eating, sleep, sexual, other. Other conforms to an ICD or DSM classification. The most severe clinical problem can change for each collection.

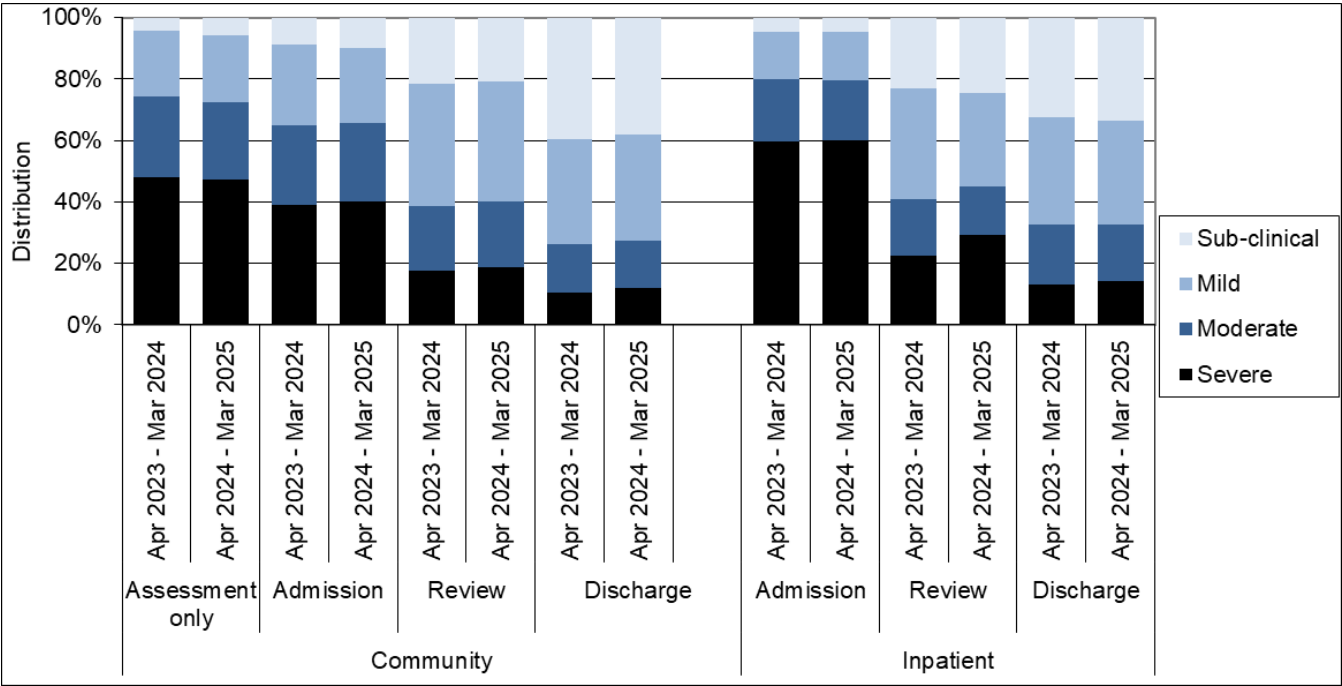
Table 5c: Distribution of other mental health and behavioural problems in the clinical range (admission and review collections) by team: New Zealand, Apr 2024 - Mar 2025

	Phobic	Anxiety	Obsessive-compulsive	Stress	Dissociative	Somatoform	Eating	Sleep	Sexual	Other	Number
Community service											
Alcohol and drug team	0%	34%	2%	35%	1%	0%	2%	19%	0%	4%	601
Child and youth team	1%	41%	13%	8%	1%	0%	12%	12%	1%	3%	160
Co-existing problem team	0%	48%	0%	9%	17%	0%	4%	9%	0%	9%	22
Community team	1%	42%	4%	23%	2%	1%	4%	16%	0%	7%	18,519
Early intervention team	0%	56%	2%	11%	1%	0%	3%	19%	1%	5%	370
Eating disorders team	0%	11%	1%	3%	0%	0%	79%	3%	0%	2%	685
Forensic team	0%	19%	0%	19%	3%	3%	6%	31%	3%	14%	35
Kaupapa Māori team	0%	43%	1%	21%	1%	0%	3%	23%	1%	3%	947
Maternal mental health team	0%	62%	3%	22%	1%	0%	1%	6%	0%	4%	1,626
Needs assessment and service coordination team	0%	27%	4%	31%	2%	0%	4%	19%	1%	9%	379
Older people team	0%	54%	4%	6%	0%	0%	2%	15%	2%	17%	48
Pacific people team	0%	29%	3%	18%	3%	0%	3%	34%	1%	8%	264
Specialty team	0%	36%	2%	19%	1%	0%	18%	19%	0%	2%	265
Total	1%	42%	3%	22%	2%	1%	6%	16%	0%	6%	23,937
Inpatient service											
Alcohol and drug team	3%	83%	0%	5%	0%	0%	1%	1%	0%	7%	86
Eating disorders team	0%	9%	0%	0%	0%	0%	91%	0%	0%	0%	22
Forensic team	0%	56%	2%	12%	1%	0%	4%	16%	5%	3%	93
Inpatient team	1%	24%	2%	24%	2%	0%	4%	33%	1%	9%	4,776
Maternal mental health team	0%	45%	3%	19%	0%	0%	6%	17%	3%	8%	78
Older people team	4%	22%	0%	9%	4%	0%	4%	48%	4%	4%	23
Total	1%	26%	2%	23%	2%	0%	4%	32%	1%	9%	5,085

Notes: This is for admission and review collections. This is for service users in the clinical range (2, 3 or 4) for other mental health and behavioural problems item.

Interpretation: The shows the distribution of what is selected for other mental health and behavioural problems.

Graph 6: Index of Severity ratings for HoNOS by collection type: New Zealand, Apr 2023 - Mar 2024 and Apr 2024 - Mar 2025



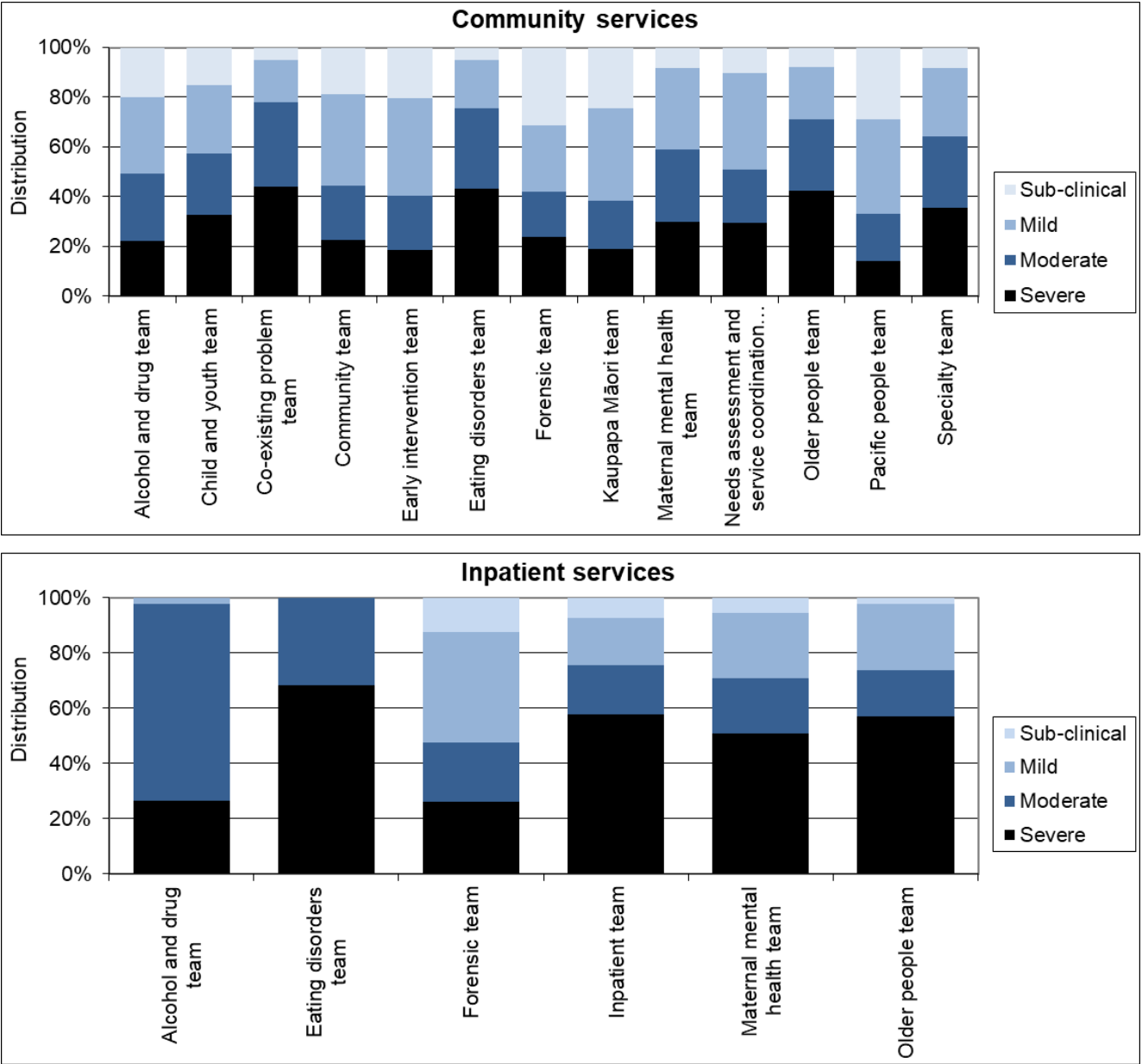
Notes: Community discharge does not include discharge to an inpatient unit. Index of Severity: Sub clinical = all items <2, mild = at least one item >1 and all items <3, moderate = at least one item >=3, severe = at least 2 items >=3 using first 10 items.

Interpretation: Darker bars indicate higher overall level of severity. More positive outcome is shown by larger decrease in darker sections of bar between admission and discharge.

2. Other measures of service activity

This section presents other information related to data collected in PRIMHD that may be helpful for understanding how teams are operating. This includes information relevant to caseload intensity and team activity.

Graph 7: Index of Severity for HoNOS (admission and review collections) by team, New Zealand, Apr 2024 - Mar 2025



Notes: Only data related to collection at admission and review is included so that results reflect the severity of service users during their engagement with the service. Index of Severity: Sub clinical = all items <2, mild = at least one item >1 and all items <3, moderate = at least one item >=3, severe = at least 2 items >=3 using first 10 items.

Interpretation: This graph gives an impression of the overall severity of the caseload for different teams at admission. The longer the darker bar, the higher the overall severity of the team’s caseload.

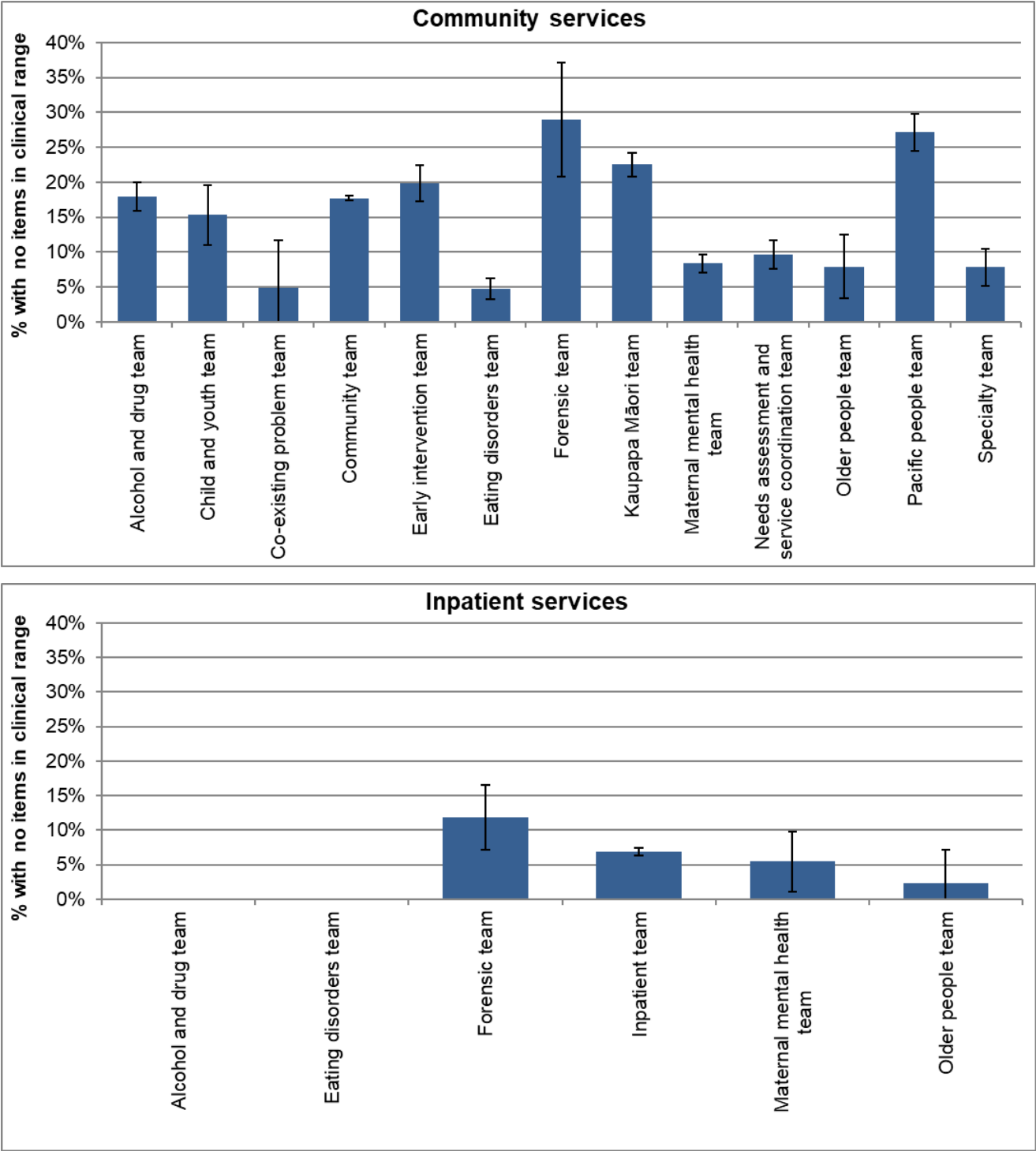
Table 7: Index of Severity for HoNOS by collection type and team: New Zealand, Apr 2024 - Mar 2025

Team type	Assessment only					Admission					Review					Discharge				
	Sub	Mild	Mod	Sev	N	Sub	Mild	Mod	Sev	N	Sub	Mild	Mod	Sev	N	Sub	Mild	Mod	Sev	N
Community services																				
Alcohol and drug team	4%	12%	28%	55%	348	10%	18%	35%	37%	219	22%	33%	26%	19%	1,128	26%	24%	32%	18%	127
Child and youth team	5%	25%	13%	57%	77	5%	16%	18%	61%	44	17%	30%	26%	27%	230	36%	41%	12%	10%	58
Co-existing problem team											0%	15%	31%	54%	26					
Community team	6%	22%	25%	48%	8,987	10%	24%	24%	41%	7,622	21%	40%	21%	18%	30,304	38%	35%	15%	12%	5,211
Early intervention team						13%	40%	22%	24%	197	22%	39%	22%	17%	728	33%	38%	16%	13%	111
Eating disorders team	2%	14%	34%	50%	44	2%	8%	38%	52%	286	7%	27%	29%	38%	477	29%	31%	21%	19%	147
Forensic team						33%	13%	17%	38%	24	31%	30%	19%	21%	97	50%	19%	8%	23%	26
Kaupapa Māori team	13%	32%	28%	27%	60	16%	34%	18%	32%	274	25%	38%	20%	17%	2,064	40%	36%	10%	14%	148
Maternal mental health team	10%	33%	23%	34%	155	4%	24%	32%	40%	911	12%	40%	27%	21%	1,019	47%	36%	12%	5%	765
Needs assessment and service coordination team	5%	42%	17%	37%	108	18%	42%	16%	24%	45	10%	38%	22%	30%	741	10%	24%	19%	48%	21
Older people team	10%	14%	43%	33%	21	2%	20%	39%	39%	64	13%	21%	20%	45%	75	20%	27%	11%	42%	45
Pacific people team						14%	41%	22%	24%	170	32%	37%	18%	12%	899	40%	36%	17%	8%	78
Specialty team	8%	23%	32%	37%	511	4%	23%	26%	46%	95	10%	29%	29%	32%	302	34%	34%	10%	21%	29
Total	6%	22%	25%	47%	10,358	10%	25%	25%	40%	9,968	21%	39%	22%	19%	38,108	38%	34%	15%	12%	6,773
Inpatient service																				
Alcohol and drug team						0%	2%	71%	27%	192						1%	8%	73%	18%	182
Eating disorders team						0%	0%	33%	67%	21										
Forensic team						16%	24%	22%	38%	37	11%	44%	22%	23%	148	58%	33%	7%	2%	43
Inpatient team						5%	16%	18%	61%	7,536	27%	28%	15%	30%	890	35%	34%	17%	14%	5,791
Maternal mental health team						2%	23%	22%	54%	102						25%	45%	18%	12%	67
Older people team						0%	25%	19%	56%	32						29%	5%	24%	43%	21
Total						5%	16%	20%	60%	7,923	25%	30%	16%	29%	1,061	34%	34%	18%	14%	6,119

Notes: Sub = sub clinical, Mild = mild, Mod = moderate, Sev = severe on Index of Severity. Only admission collection data is included so that results reflect the severity of service users during their engagement with the service. Index of Severity: Sub clinical = all items <2, mild = at least one item >1 and all items <3, moderate = at least one item >=3, severe = at least 2 items >=3 using first 10 items. Community discharge does not include discharge to an inpatient unit.

Interpretation: Larger percentages in the columns to the right for each type of collection, the higher the overall severity of the team's caseload.

Graph 8: Collections with no HoNOS items in clinical range: New Zealand, Apr 2024 - Mar 2025



Notes: Includes admission and review collections. Shows percentage of service users with all HoNOS items less than two, ie no HoNOS items in the clinical range.

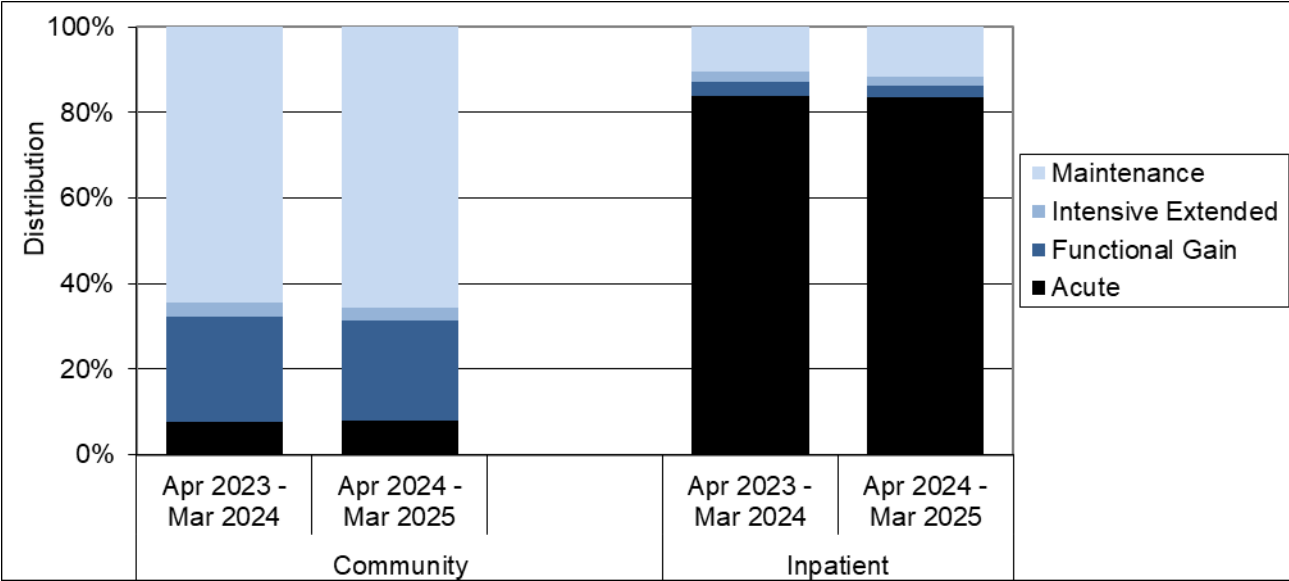
Interpretation: There are a variety of reasons that may make it appropriate for service users to remain in the service even though they show no HoNOS items in the clinical range. However, teams showing a larger or substantial percentage of service users with no HoNOS items in the clinical range could benefit from reviewing these cases to ensure that the service remains appropriate for this service user.

Table 8: Collections with no HoNOS items in clinical range: New Zealand, Apr 2024 - Mar 2025

Team type	Number of collections with no items in clinical range	Percentage with no items in clinical range
Community services		
Alcohol and drug team	241	18%
Child and youth team	42	15%
Co-existing problem team	2	5%
Community team	6,721	18%
Early intervention team	184	20%
Eating disorders team	36	5%
Forensic team	35	29%
Kaupapa Māori team	526	22%
Maternal mental health team	161	8%
Needs assessment and service coordination team	76	10%
Older people team	11	8%
Pacific people team	290	27%
Specialty team	31	8%
Total	8,359	17%
Inpatient services		
Alcohol and drug team	0	0%
Eating disorders team	0	0%
Forensic team	22	12%
Inpatient team	578	7%
Maternal mental health team	6	5%
Older people team	1	2%
Total	607	7%

Notes: For further information see notes for graph 8.

Graph 9: Focus of care categories: New Zealand, Apr 2023 - Mar 2024 and Apr 2024 - Mar 2025



Notes: Data from review and discharge collections.

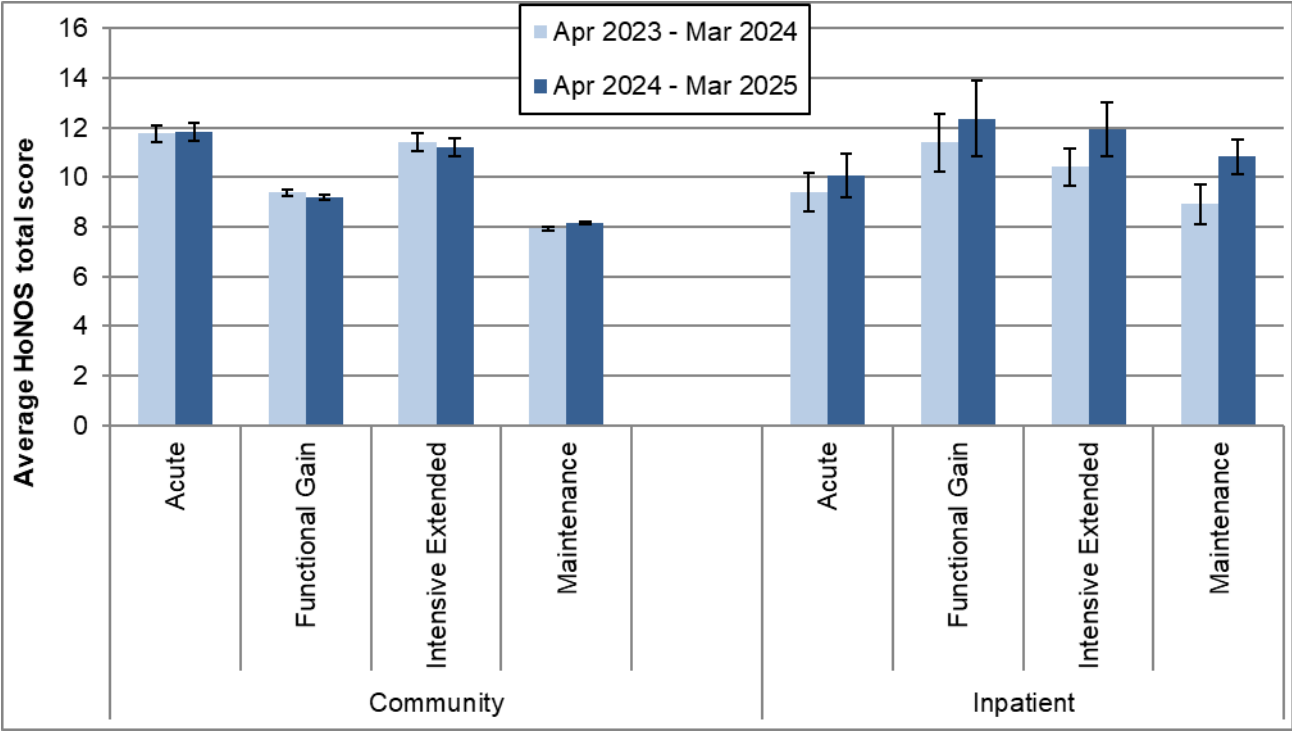
Interpretation: Darker bars indicate more intensive involvement in care, so a longer, darker bar in general suggests more intensive working. A longer functional gain bar and shorter maintenance bar potentially suggests more recovery focused ways of working.

Table 9: Focus of care categories by team: New Zealand, Apr 2023 - Mar 2024 and Apr 2024 - Mar 2025

Team type	Acute		Functional gain		Intensive extended		Maintenance		Number of collections	
	Last	This	Last	This	Last	This	Last	This	Last	This
Community services										
Alcohol and drug team	5%	7%	24%	18%	2%	4%	68%	70%	1,403	1,273
Child and youth team	7%	4%	30%	28%	6%	5%	57%	62%	278	258
Co-existing problem team		10%		52%		5%		33%		21
Community team	8%	9%	23%	22%	3%	3%	65%	66%	33,473	34,271
Early intervention team	4%	4%	40%	35%	2%	2%	54%	59%	1,040	901
Eating disorders team	6%	8%	46%	50%	9%	11%	39%	31%	571	593
Forensic team	8%	10%	18%	17%	2%	3%	72%	70%	105	106
Kaupapa Māori team	4%	4%	13%	11%	4%	2%	79%	83%	1,783	2,112
Maternal mental health team	8%	5%	53%	59%	2%	2%	38%	34%	1,609	1,601
Needs assessment and service coordination team	2%	4%	12%	12%	4%	3%	82%	80%	610	695
Older people team	11%	8%	3%	9%	2%	0%	84%	82%	141	119
Pacific people team	4%	6%	16%	16%	0%	0%	80%	78%	917	966
Specialty team	10%	7%	31%	34%	3%	2%	56%	56%	310	332
Total	8%	8%	25%	23%	3%	3%	64%	65%	42,278	43,267
Inpatient services										
Alcohol and drug team	100%	100%	0%	0%	0%	0%	0%	0%	174	182
Forensic team	7%	9%	4%	4%	42%	32%	47%	54%	183	179
Inpatient team	86%	85%	3%	3%	1%	1%	10%	11%	6,572	6,279
Maternal mental health team	87%	86%	13%	3%	0%	0%	0%	11%	60	64
Older people team		60%		0%		7%		33%		30
Total	84%	84%	3%	3%	2%	2%	11%	12%	7,028	6,754

Notes: For further information see notes for Graph 9.

Graph 10: HoNOS total score (review collections) by focus of care: New Zealand, Apr 2023 - Mar 2024 and Apr 2024 - Mar 2025



Notes: This data is just for review collections.

Interpretation: Points are significantly different if error bars do not overlap. A general downward trend in scores from acute to maintenance focus of care might be expected.

Table 10: HoNOS total score (review collections) by focus of care by team: New Zealand, Apr 2024 - Mar 2025

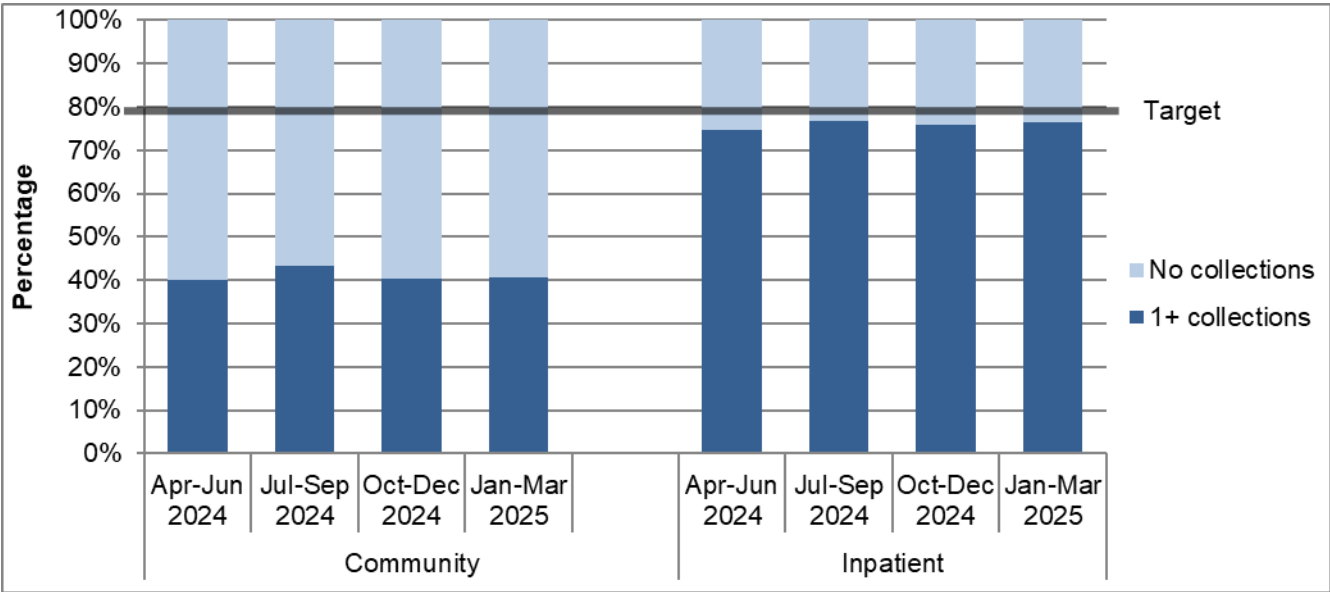
Team type	Acute			Functional Gain			Intensive Extended			Maintenance		
	N	Mean	CI	N	Mean	CI	N	Mean	CI	N	Mean	CI
Community services												
Alcohol and drug team	47	14.0	11.6-16.3	168	9.2	8.4-9.9	48	9.6	7.8-11.4	813	7.1	6.8-7.5
Child and youth team				54	12.7	10.8-14.5				131	8.8	7.7-9.8
Community team	1,152	11.3	10.9-11.7	6,174	9.1	8.9-9.2	908	10.9	10.5-11.3	19,781	8.1	8.0-8.1
Early intervention team				261	8.7	8.0-9.4				411	7.4	6.8-8.0
Eating disorders team	40	13.2	11.4-14.9	185	11.3	10.4-12.2	53	13.1	11.1-15.0	151	9.0	8.2-9.7
Forensic team										67	9.2	7.9-10.5
Kaupapa Māori team	43	14.8	12.7-17.0	219	11.9	11.0-12.7	35	12.9	11.1-14.8	1,615	9.5	9.2-9.8
Maternal mental health team				567	7.9	7.5-8.3	24	15.0	11.7-18.3	281	6.7	6.3-7.2
Needs assessment and service coordination team				79	10.6	9.7-11.5				548	11.3	10.7-11.8
Older people team										63	11.0	9.5-12.5
Pacific people team	27	15.9	12.7-19.2	121	9.1	8.3-10.0				710	6.2	5.9-6.6
Specialty team				99	12.5	11.0-13.9				173	12.1	11.1-13.0
Total	1,376	11.8	11.5-12.2	7,961	9.2	9.1-9.3	1,128	11.2	10.9-11.6	24,754	8.2	8.1-8.2
Inpatient services												
Forensic team							52	11.1	9.9-12.2	89	11.9	10.7-13.1
Inpatient team	402	9.9	9.0-10.8	79	12.2	10.6-13.9	46	12.7	10.7-14.7	278	10.5	9.6-11.3
Total	417	10.1	9.2-11.0	86	12.4	10.9-13.9	100	11.9	10.8-13.0	370	10.8	10.1-11.5

Notes: For further information see notes for Graph 10.

3. Collection completion and validity

This section presents information about the completeness and validity of the data on which the remainder of this report is based. It also shows the current targets for the variables presented.

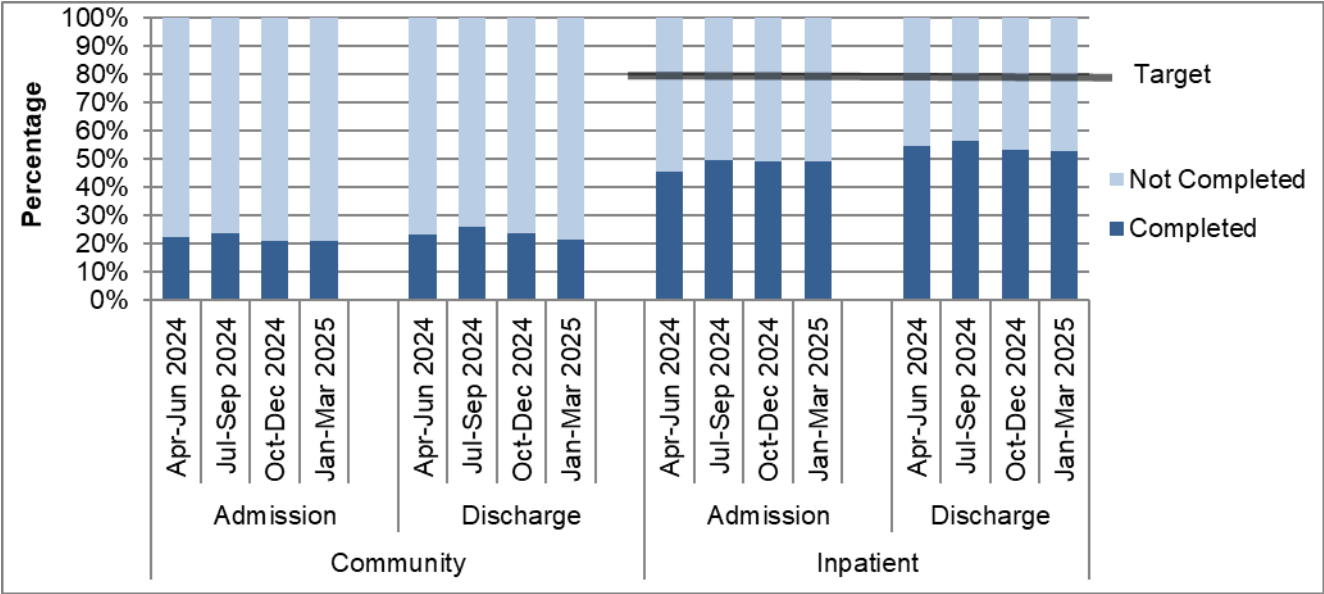
Graph 11: Percentage of service users with at least one collection during the period in a quarter: New Zealand, Apr 2024 – Mar 2025 (18 to 64 years)



Interpretation: The longer the dark part of the bar, the more completely the data set includes all service users, and the more meaningful and representative the graphs, tables, and analyses using these data will be. This data is approximate due to movement of service users between teams and similar variations; however, it does provide a reasonably accurate representation of completion of measures. Only data with valid collections is included.

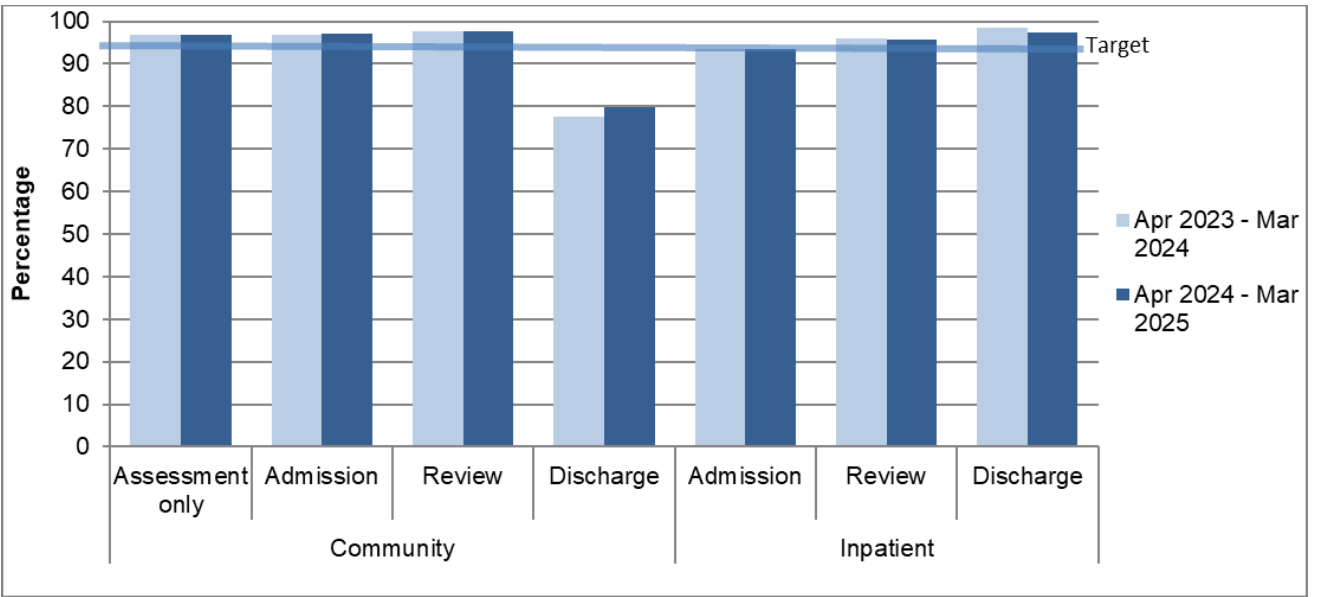
Target: To meet or exceed the target shown on the graph for the percentage of service users with at least one collection within the period.

Graph 12: Percentage of service users with admission and discharge collections completed by quarter: New Zealand, Apr 2024 – Mar 2025 (18 to 64 years)



Interpretation: The longer the dark bar, the larger the percentage of admission and discharge that had the relevant data collection type. Data is approximate due to movement of service users between teams and similar variations; however, it does provide a reasonably accurate representation of completion of measures. Only data with valid collections is included.

Graph 13: Percentage of valid collections, HoNOS: New Zealand, Apr 2023 - Mar 2024 and Apr 2024 - Mar 2025



Notes: Valid = Two or fewer of the 12 items scored as unknown or missing. Discharge excludes collection types for lost to care, discharge dead and brief episode of care. Collection in drug and alcohol teams is not required, therefore AOD data is excluded.

Interpretation: The longer the dark lines, the higher the percentage of valid scores.

Target: Aim for 95% valid collections.

Table 13: Invalid collections by team, by HoNOS item: New Zealand, Apr 2024 - Mar 2025

Team type	% Invalid			Number of invalid ratings by HoNOS item												Total number
	Adm	Rev	Dch	1	2	3	4	5	6	7	8	9	10	11	12	
Community services																
Child and youth team	2%	1%	7%	8	8	10	8	9	10	9	11	8	8	9	8	429
Community team	3%	2%	21%	2,687	2,797	3,444	2,927	2,879	2,957	2,950	3,061	3,051	3,026	3,221	3,511	57,296
Early intervention team	4%	1%	18%	54	59	70	63	53	78	61	77	61	58	76	90	1,232
Eating disorders team	1%	1%	16%	41	47	43	44	42	40	45	42	47	43	50	52	1,044
Forensic team	4%	4%	0%	3	3	3	3	4	5	4	2	3	3	5	6	168
Kaupapa Māori team	3%	2%	31%	145	162	179	173	152	187	152	180	154	158	176	166	2,803
Maternal mental health team	2%	3%	16%	207	206	224	204	204	204	205	204	208	214	229	215	3,104
Needs assessment and service coordination team	2%	1%	4%	4	10	6	3	3	4	4	6	3	6	9	11	950
Older people team	2%	3%	11%	8	9	10	12	8	11	12	10	9	11	11	10	226
Pacific people team	2%	1%	25%	56	59	68	57	57	68	61	60	57	56	64	71	1,307
Specialty team	1%	3%	9%	13	15	34	17	15	23	22	21	23	20	25	33	970
Total	3%	2%	20%	3,227	3,376	4,092	3,512	3,427	3,588	3,526	3,675	3,625	3,604	3,876	4,174	69,555
Inpatient services																
Eating disorders team	0%			0	0	0	0	0	0	0	0	0	0	0	0	36
Forensic team	8%	0%	0%	1	2	1	0	1	1	1	1	2	1	2	6	231
Inpatient team	7%	5%	3%	153	263	577	369	278	263	370	508	640	465	991	1,183	14,811
Maternal mental health team	0%		0%	0	0	4	0	0	2	0	1	2	1	9	8	177
Older people team	9%		5%	0	4	6	2	0	1	1	3	2	0	7	12	66
Total	7%	4%	3%	154	269	588	371	279	267	372	513	646	467	1,009	1,209	15,329

Notes: Per cent (%) invalid collections = the percentage of collections that had three or more of the 12 items scored as unknown or missing. Number of invalid ratings by HoNOS item = for each of the HoNOS items, the number of collections for which that item was unknown or missing. Discharge excludes collection types for lost to care, deceased and brief episode of care. Collection in drug and alcohol teams is not required, therefore AOD data is excluded. **Interpretation:** The lower the per cent invalid, the higher the percentage of valid scores. The lower the number of invalid collections by HoNOS item, the more collections that have valid data on that HoNOS item. **Target:** Aim for 95% valid collections (5% invalid collections) or better. Aim for as few invalid items as possible, with all items having a similar validity rate.