

PRIMHD summary report - HoNOS

Health of the Nation Outcomes Scales - working age adults report for New Zealand

This report summarises national Programme for the Integration of Mental Health Data (PRIMHD) data submitted by district health boards (DHBs). In particular, it presents Health of the National Outcomes Scale working aged adults (HoNOS) data, from services where HoNOS is the primary measure.

This report is organised into three major sections that provide information about:

1. **Collection completion and validity:** This details the completeness of the data set provided by your mental health services. This is important because it indicates how valid and reliable the data sets are likely to be. The less complete the data set, the less valid the information is likely to be.
2. **Outcomes related information:** This provides indications about what changes have occurred for service users between entering and leaving the service. Outcome is assessed by comparing the group admitted and the group discharged from the service in the same time period. This should provide a reasonable indication of outcomes achieved unless the service user mix has changed significantly over the usual period for which service is delivered.
3. **Service related information:** This provides information about the services, such as the overall severity of service users who use different services.

In many cases the data is presented graphically for New Zealand, and then presented as a table for the individual team types (see team type classification factsheet).

The time period covered differs for the different data presented. See the title or the notes under the graphs or tables for information about the time period covered. Unless otherwise stated, the notes under the graphs also apply to the corresponding table.

For all graphs and tables, if there are less than twenty cases in the data set, then the information is not presented. This is because small samples frequently provide inaccurate and potentially misleading results. See the notes and user guide for other important information about the graphs and tables.

Where appropriate, the statistical **confidence interval** is presented. This is shown by error bars (small lines above and below the average) on the graphs, and a score range in some tables. As a rule of thumb, if the confidence intervals of two data points do not overlap, the two points can be considered to be significantly different. If the confidence intervals of the data points do overlap, we assume the points are not significantly different. It is important to note that statistical significance may not indicate a clinically significant difference.

See the associated user guide for more information about how to understand and use the data presented in this report.

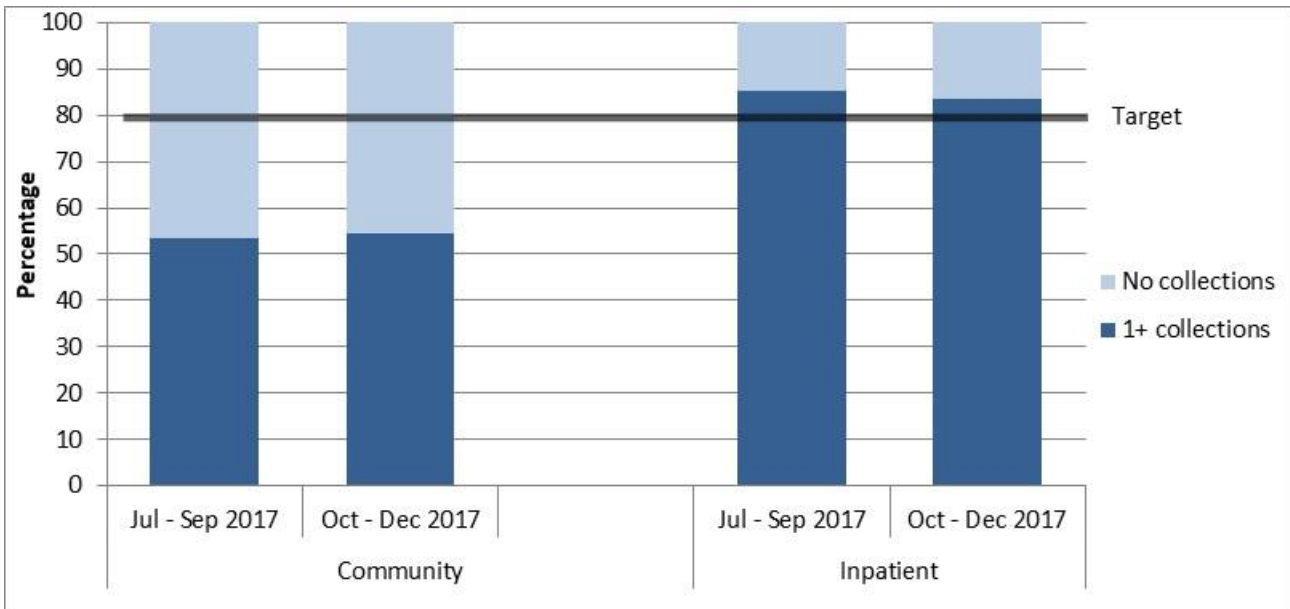
Data for graphs 1 and 2 was extracted 9 April 2018 from PRIMHD by the Ministry of Health and formatted by Te Pou. The data for graphs and tables 3 to 12 was extracted 9 April 2018 from PRIMHD by the Ministry of Health, then analysed and formatted by Te Pou.

Please note: For this period a few DHBs have incomplete data which will affect New Zealand totals.

1. Collection completion and validity

This section presents information about the completeness and validity of the data on which the remainder of this report is based. It also shows the current targets for the variables presented.

Graph 1: Percentage of service users with at least one collection during the period, New Zealand, Jul - Sep 2017 and Oct - Dec 2017 (18 to 64 years)

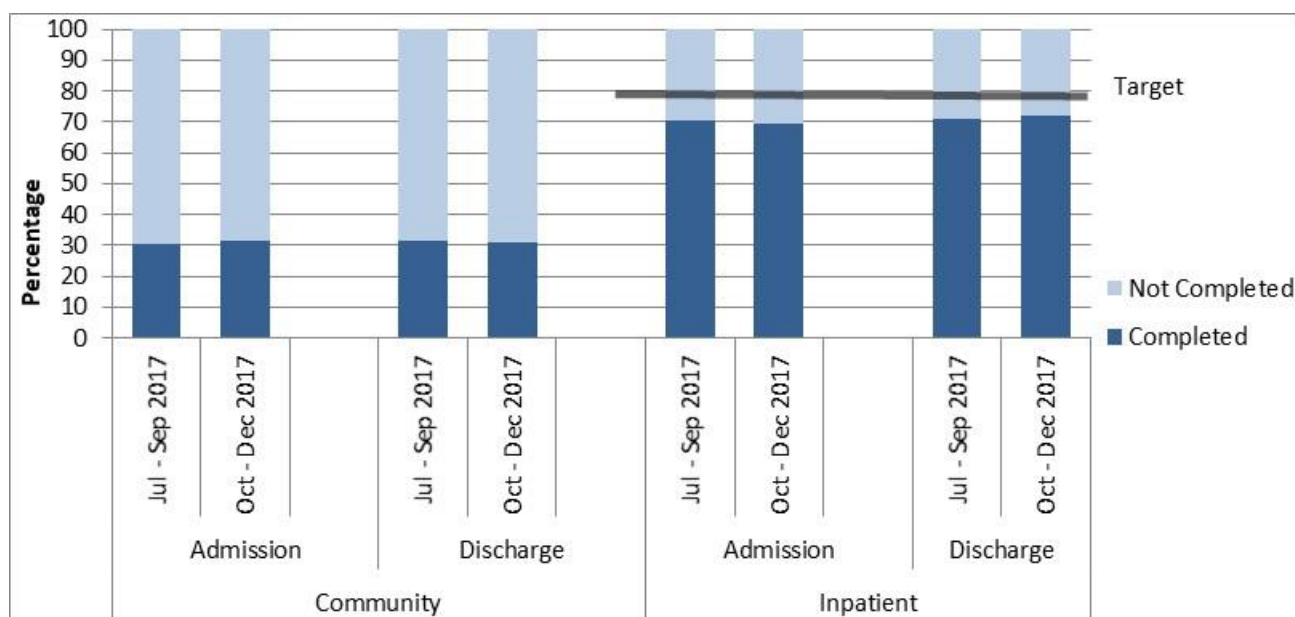


Notes: Community compliance is affected by crisis teams completing triage or brief assessment type activity which is not a comprehensive assessment.

Interpretation: The longer the dark part of the bar, the more completely the data set includes all service users, and the more meaningful and representative the graphs, tables, and analyses using this data will be. The data is approximate due to movements of service users between teams and similar variations; however, it does provide a reasonably accurate representation of completion of measures. The data only includes valid collections.

Target: To meet or exceed the target shown on the graph for the percentage of service users with at least one collection within the period.

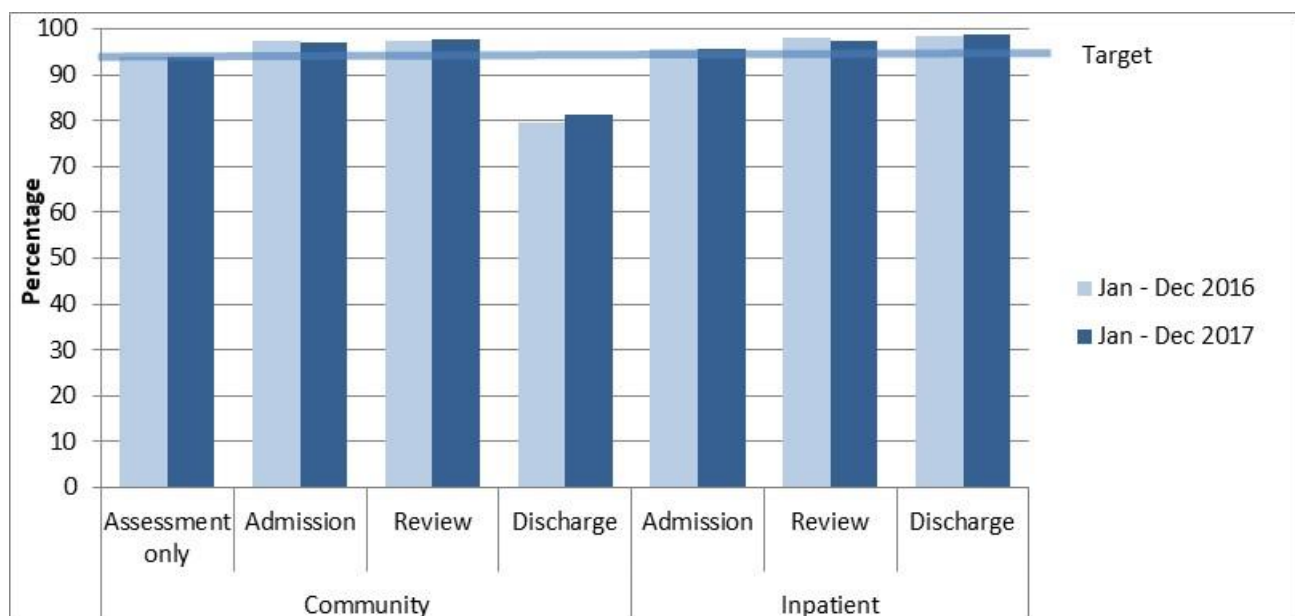
Graph 2: Percentage of service users with admission and discharge collections completed, New Zealand, Jul - Sep 2017 and Oct - Dec 2017 (18 to 64 years)



Notes: Community compliance is affected by crisis teams completing triage or brief assessment type activity which is not a comprehensive assessment.

Interpretation: The longer the dark bar, the larger the percentage of admission and discharge that had the relevant data collection type. Data is approximate due to movements of service users between teams and similar variations; however, it does provide a reasonably accurate representation of completion of measures. The data only includes valid collections.

Graph 3: Percentage of valid collections, HoNOS, New Zealand, Jan - Dec 2016 and Jan - Dec 2017



Notes: Valid = Two or fewer of the 12 items scored as unknown or missing. Discharge exclude collection types for lost to care, discharge dead and brief episode of care. Collection in drug and alcohol teams is not required, therefore AOD data is excluded.

Interpretation: The longer the dark lines, the higher the percentage of valid scores.

Target: Aim for 95% valid collections.

Table 3: Invalid collections by team, by HoNOS item, New Zealand, Jan - Dec 2017

Team type	% Invalid			Number of invalid ratings by HoNOS item												Total number
	Adm	Rev	Dch	1	2	3	4	5	6	7	8	9	10	11	12	
Community services																
Child and youth team	5%	3%	13%	28	30	35	27	27	31	28	29	27	28	27	29	498
Community team	3%	2%	19%	3,852	3,905	4,685	4,029	3,947	4,013	4,014	4,202	4,151	4,127	4,412	4,362	76,912
Eating disorders team	1%	1%	9%	20	20	23	20	19	19	19	19	20	19	19	20	639
Forensic team	10%	1%	10%	111	109	122	115	109	114	115	113	116	112	115	115	588
Intellectual disability dual diagnosis team		0%		4	5	4	5	5	4	6	5	6	6	6	6	56
Kaupapa Māori team	5%	4%	26%	301	303	357	305	314	315	308	327	311	314	317	333	4,555
Maternal mental health team	3%	4%	20%	361	361	384	361	358	362	364	365	369	368	366	365	4,266
Older people team	2%	2%	10%	10	13	10	13	11	22	15	20	10	10	15	17	387
Pacific people team	5%	2%	14%	47	52	66	48	48	58	53	78	53	59	62	72	1,830
Residential/accommodation team		0%		0	0	0	0	0	0	0	0	0	0	0	1	22
Specialist psychotherapy team				2	2	3	3	4	3	4	4	3	4	4	3	28
Specialty team	2%	3%	16%	33	41	50	39	35	48	45	40	88	87	116	93	928
Total	3%	2%	19%	4,769	4,841	5,739	4,965	4,877	4,989	4,971	5,202	5,154	5,134	5,459	5,416	90,711

Team type	% Invalid			Number of invalid ratings by HoNOS item												Total number
	Adm	Rev	Dch	1	2	3	4	5	6	7	8	9	10	11	12	
Inpatient services																
Eating disorders team	0%		0%	0	0	0	0	0	0	0	0	0	0	0	0	74
Forensic team		0%		0	0	0	1	0	1	2	1	0	1	2	2	96
Inpatient team	4%	3%	1%	167	216	588	324	244	290	308	564	469	386	715	955	20,045
Maternal mental health team	11%		9%	12	12	17	15	11	14	10	14	15	17	25	22	192
Older people team	6%		6%	0	0	1	0	1	1	1	4	4	2	11	15	72
Total	4%	3%	1%	179	228	606	340	256	306	321	583	488	406	753	994	20,487

Notes: Percentage of invalid collections = the percentage of collections that had three or more of the 12 items scored as unknown or missing. Number of invalid ratings by HoNOS item = for each of the HoNOS items, the number of collections for which that item was unknown or missing. Discharge excludes collection types for lost to care, deceased and brief episode of care. Collection in drug and alcohol teams is not required, therefore AOD data is excluded.

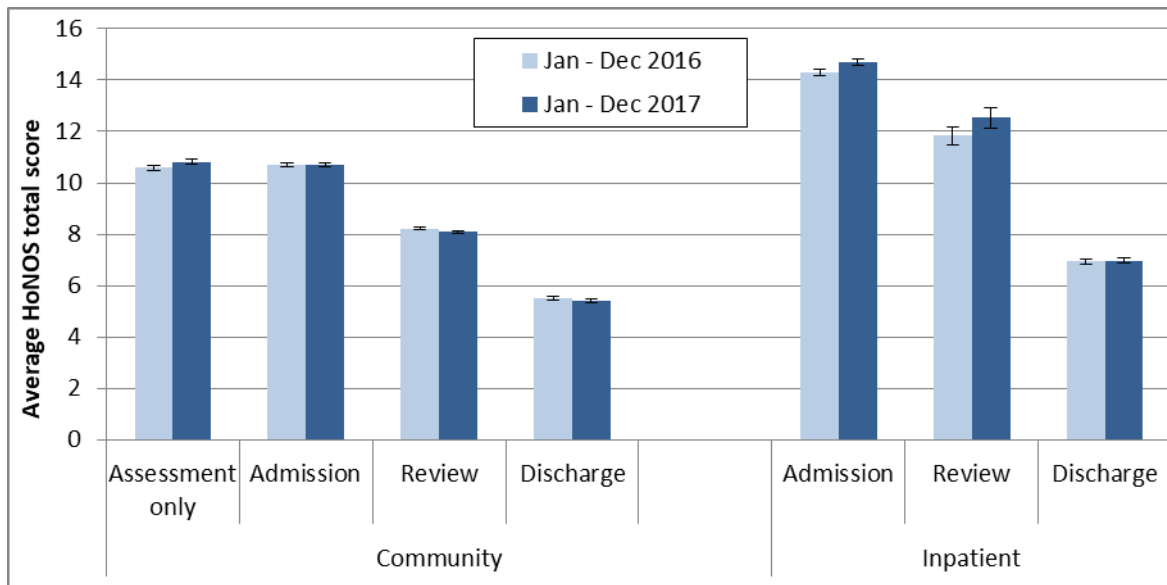
Interpretation: The lower the percentage of invalid collections by team, the higher the percentage of valid scores. The lower the number of invalid collections by HoNOS item, the more collections that have valid data on that HoNOS item.

Target: Aim for 95% valid collections (5% invalid collections) or better. Aim for as few invalid items as possible, with all items having a similar validity rate.

2. Outcomes - changes in service user status

This section presents HoNOS data indicating the status of service users at different stages of their contact with DHB mental health services. Graph and Table 4 show results from HoNOS total scores. Graphs and Tables 5 to 7B show results related to the percentage of HoNOS items in the clinical range. Graph and Table 8 show results from the Index of Severity derived from HoNOS scores.

Graph 4: Average HoNOS total score (12 items) by collection type, New Zealand, Jan - Dec 2016 and Jan - Dec 2017



Notes: Error bars indicate the confidence intervals around the data point. If error bars overlap the data points are not significantly different. Community discharge does not include discharge to an inpatient unit.

Interpretation: Decrease between admission and discharge is an indication of the outcomes achieved by the service user and service. The greater the decrease between admission and discharge, and the lower the average HoNOS score at discharge, the more positive the outcome.

Target: A greater decrease from admission to discharge and lower average rating at discharge.

Table 4: Average HoNOS total score (12 items), by collection type and team, New Zealand, Jan - Dec 2017

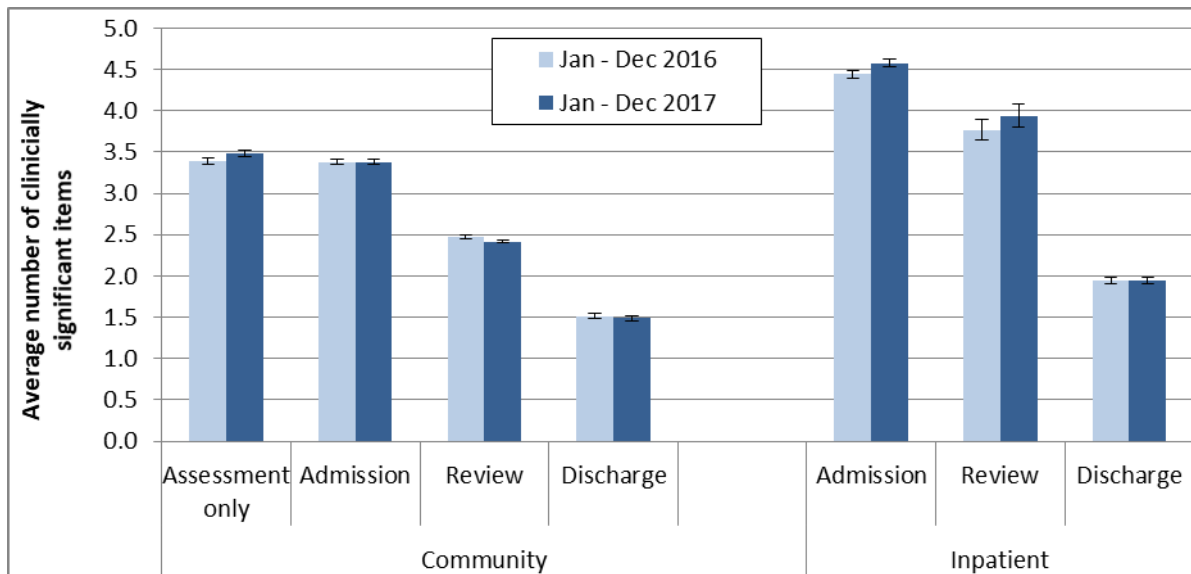
Team type	Assessment only			Admission			Review			Discharge		
	N	Mean	CI	N	Mean	CI	N	Mean	CI	N	Mean	CI
Community services												
Alcohol and drug team	405	12.9	12.4-13.5	521	10.0	9.5-10.4	724	6.4	6.0-6.7	246	5.0	4.5-5.6
Child and youth team	50	9.4	7.9-10.9	53	11.9	10.2-13.7	276	8.8	8.2-9.5	87	5.4	4.5-6.4
Co-existing problem team							37	9.3	7.8-10.8			
Community team	9,732	10.8	10.7-10.9	13,781	10.8	10.8-10.9	38,564	8.2	8.1-8.2	7,292	5.6	5.5-5.7
Eating disorders team	34	10.6	8.8-12.4	181	10.6	9.8-11.3	246	8.6	7.9-9.2	141	7.2	6.3-8.0
Forensic team	27	7.3	5.6-9.0	99	8.4	7.5-9.3	137	7.3	6.5-8.1	183	3.3	2.8-3.9
Intellectual disability dual diagnosis team							35	12.2	10.6-13.9			
Kaupapa Māori team	300	11.9	11.2-12.6	528	11.0	10.5-11.6	3,016	8.7	8.5-8.9	227	6.4	5.6-7.1
Maternal mental health team	264	7.2	6.6-7.8	1,214	9.1	8.8-9.4	1,342	7.1	6.9-7.4	912	3.8	3.5-4.0
Older people team	34	9.9	8.0-11.8	79	13.5	12.1-14.9	205	11.1	10.4-11.7	38	11.5	9.5-13.5
Pacific people team				216	7.2	6.5-7.9	1,373	5.2	5.0-5.5	115	4.0	3.1-4.8
Residential/accommodation team							20	7.0	5.3-8.7			
Specialty team	39	12.2	10.0-14.4	319	12.6	11.8-13.3	368	7.0	6.5-7.5	60	5.6	4.5-6.6
Total	10,899	10.8	10.7-10.9	17,023	10.7	10.6-10.8	46,358	8.1	8.0-8.1	9,316	5.4	5.3-5.5

Team type	Assessment only			Admission			Review			Discharge		
	N	Mean	CI	N	Mean	CI	N	Mean	CI	N	Mean	CI
Inpatient services												
Alcohol and drug team				270	7.3	6.9-7.7				252	6.0	5.7-6.4
Eating disorders team				37	11.2	9.9-12.5				35	9.0	7.4-10.5
Forensic team							72	13.6	12.2-15.0			
Inpatient team				9,567	15.0	14.8-15.1	1,313	12.5	12.1-12.9	8,867	7.0	6.9-7.1
Maternal mental health team				97	10.2	9.2-11.2				70	7.2	6.1-8.3
Older people team				32	14.4	11.2-17.6				33	10.6	8.1-13.2
Total				10,023	14.7	14.6-14.8	1,399	12.5	12.1-12.9	9,270	7.0	6.9-7.1

Notes: N = number of collections in period. Average = average HoNOS (12 item) score, CI = confidence interval for average score. Community discharge does not include discharges to an inpatient unit.

Interpretation: If confidence intervals for two scores do not overlap, then the scores are statistically significantly different. It is important to note that statistical significance may not indicate a clinically significant difference.

Graph 5: Average number of clinically significant HoNOS items by collection type, New Zealand, Jan - Dec 2016 and Jan - Dec 2017



Notes: Average number clinically significant items = the average number of items in the clinical range (2, 3 or 4) per collection. Community discharge does not include discharge to an inpatient unit.

Interpretation: Points are significantly different if error bars don't overlap. Decrease between admission and discharge is an indication of the outcomes achieved by the service and service user. A greater decrease between admission and discharge indicates a better outcome. Lower admission score could be indication of service users seeking out and being engaged by services at a lower level of severity.

Target: A greater decrease from admission to discharge and smaller percentage in clinical range at discharge.

Table 5: Average number of clinically significant HoNOS items by collection type and team, New Zealand, Jan - Dec 2017

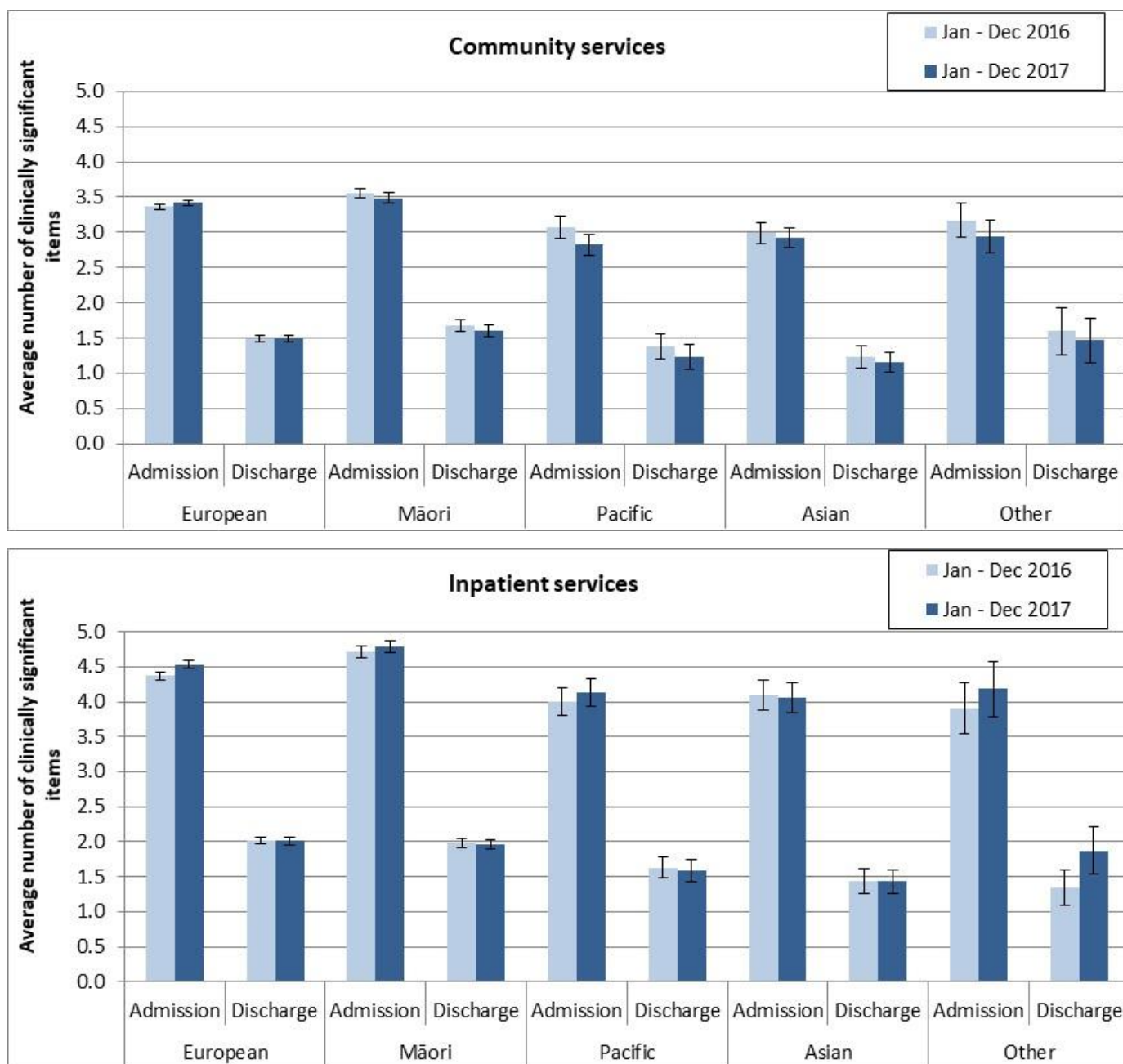
Team type	Assessment only			Admission			Review			Discharge		
	N	Mean	CI	N	Mean	CI	N	Mean	CI	N	Mean	CI
Community service												
Alcohol and drug team	405	4.2	4.0-4.4	521	3.1	2.9-3.3	724	1.9	1.8-2.0	246	1.3	1.2-1.5
Child and youth team	50	2.9	2.3-3.5	53	3.8	3.2-4.5	276	2.7	2.5-3.0	87	1.4	1.1-1.8
Co-existing problem team							37	3.2	2.6-3.8			
Community team	9,732	3.5	3.4-3.5	13,781	3.4	3.4-3.5	38,564	2.5	2.4-2.5	7,292	1.6	1.5-1.6
Eating disorders team	34	3.8	3.1-4.5	181	3.3	3.1-3.6	246	2.6	2.4-2.9	141	2.3	2.0-2.6
Forensic team	27	2.0	1.5-2.5	99	2.6	2.2-2.9	137	1.8	1.5-2.0	183	0.8	0.6-0.9
Intellectual disability dual diagnosis team							35	3.9	3.3-4.4			
Kaupapa Māori team	300	3.8	3.6-4.1	528	3.4	3.2-3.6	3,016	2.5	2.4-2.6	227	1.7	1.4-1.9
Maternal mental health team	264	2.2	2.0-2.5	1,214	3.0	2.9-3.1	1,342	2.3	2.2-2.4	912	1.0	0.9-1.0
Older people team	34	3.2	2.5-3.9	79	4.3	3.8-4.8	205	3.6	3.3-3.8	38	3.5	2.7-4.2
Pacific people team				216	2.1	1.9-2.4	1,373	1.3	1.3-1.4	115	0.9	0.6-1.2
Residential/accommodation team							20	1.7	0.9-2.4			
Specialty team	39	3.8	3.0-4.6	319	3.6	3.3-3.9	368	2.0	1.8-2.2	60	1.3	1.0-1.7
Total	10,899	3.5	3.4-3.5	17,023	3.4	3.3-3.4	46,358	2.4	2.4-2.4	9,316	1.5	1.5-1.5

Team type	Assessment only			Admission			Review			Discharge		
	N	Mean	CI	N	Mean	CI	N	Mean	CI	N	Mean	CI
Inpatient services												
Alcohol and drug team				270	1.8	1.7-1.9				252	1.6	1.5-1.8
Eating disorders team				37	3.5	3.0-3.9				35	2.8	2.2-3.4
Forensic team							72	4.4	3.9-4.9			
Inpatient team				9,567	4.7	4.6-4.7	1,313	3.9	3.8-4.1	8,867	1.9	1.9-2.0
Maternal mental health team				97	3.2	2.8-3.5				70	2.2	1.8-2.6
Older people team				32	4.3	3.2-5.3				33	3.2	2.4-4.0
Total				10,023	4.6	4.5-4.6	1,399	3.9	3.8-4.1	9,270	1.9	1.9-2.0

Notes: N = Number of collections in period. Average = average number of HoNOS items in the clinically significant range (ie scoring 2, 3, or 4), CI = confidence interval for average score. Community discharge does not include discharge to an inpatient unit.

Interpretation: If confidence intervals for two scores do not overlap, then the scores are statistically significantly different. Please note that statistical significance may not indicate a clinically significant difference.

Graph 6: Average number of clinically significant HoNOS items at admission and discharge by ethnic group, New Zealand, Jan - Dec 2016 and Jan - Dec 2017

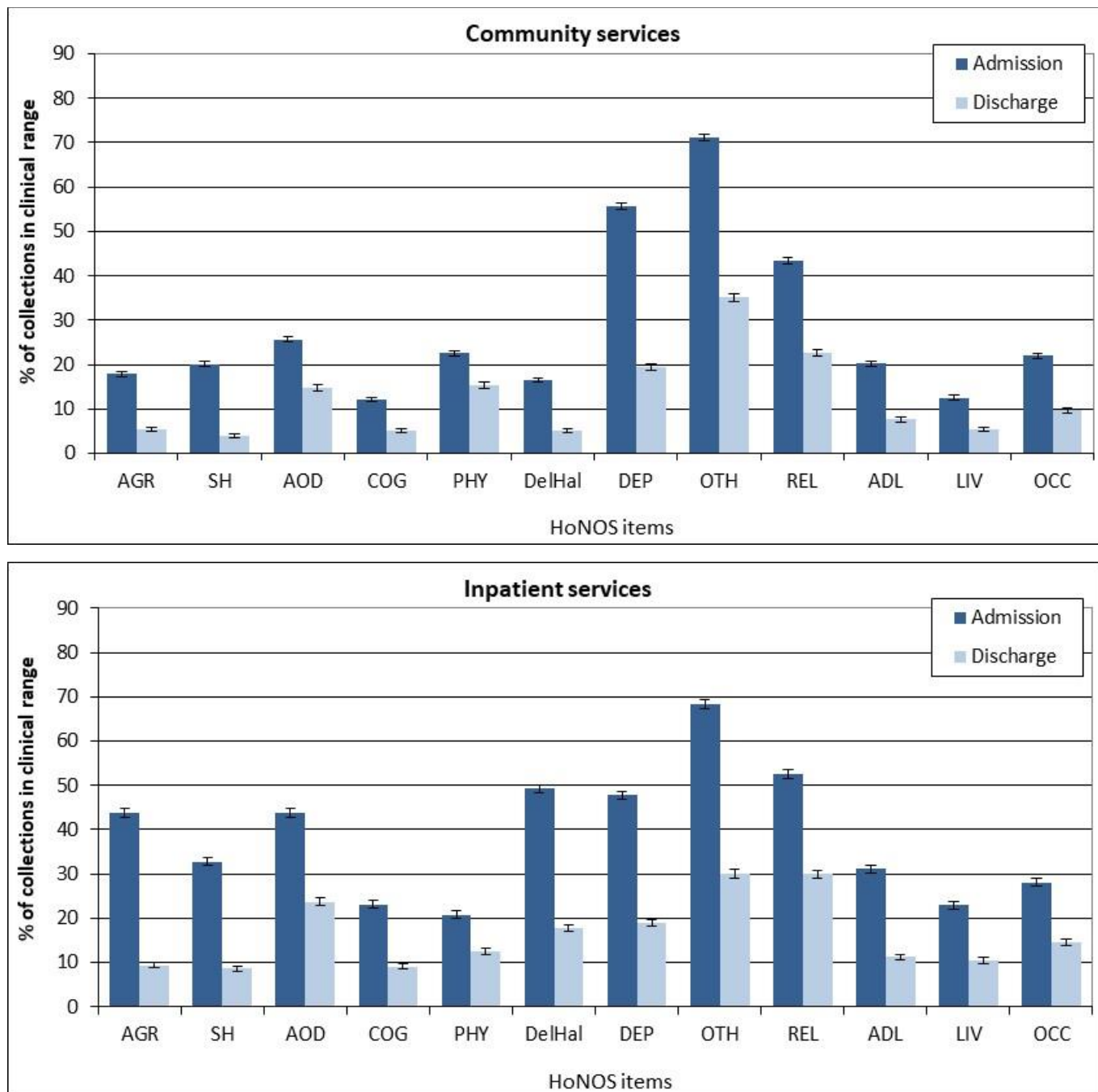


Notes: Average number of HoNOS items in the clinical range (2, 3 or 4). Community discharge does not include discharge to an inpatient unit.

Interpretation: Points are significantly different if error bars don't overlap. Decrease between admission and discharge is an indication of the outcomes achieved by the service and service user. A greater decrease between admission and discharge indicates a better outcome. A lower admission score could be indication of service users seeking out and being engaged by services at a lower level of acuity.

Target: A greater decrease from admission to discharge and smaller percentage in clinical range at discharge.

Graph 7a: Percentage of collections in clinical range on each HoNOS item, New Zealand, Jan - Dec 2017



Notes: Percentage of service users in the clinical range (2, 3 or 4) for each HoNOS item. Community discharge does not include discharge to an inpatient unit.

Interpretation: The longer the bar, the more prevalent the difficulty measured by the item is amongst service users. A greater decrease in the length of the bar from admission to discharge suggests a better outcome for the difficulty measured by the item. Items that show medium to high frequency and less change may suggest possible targets for service improvement.

Target: A greater decrease from admission to discharge and smaller percentage in clinical range at discharge.

Table 7a: Percentage of collections in clinical range on each HoNOS item (admission and discharge collections) by team, New Zealand, Jan - Dec 2017

Community services

First 6 HoNOS items														
Team type	N		AGR		SH		AOD		COG		PHY		DelHal	
	Adm	Disch	Adm	Disch	Adm	Disch	Adm	Disch	Adm	Disch	Adm	Disch	Adm	Disch
Alcohol and drug team	521	246	16%	7%	12%	1%	85%	45%	7%	0%	22%	11%	3%	0%
Child and youth team	53	87	28%	3%	28%	7%	31%	9%	17%	6%	13%	10%	23%	1%
Community team	13,759	7,284	19%	6%	22%	4%	25%	15%	12%	5%	22%	16%	17%	5%
Eating disorders team	181	141	10%	4%	12%	6%	17%	13%	10%	5%	39%	23%	23%	13%
Forensic team	99	183	8%	2%	3%	1%	39%	10%	9%	1%	3%	5%	15%	6%
Kaupapa Māori team	528	227	20%	10%	13%	4%	38%	28%	16%	8%	20%	16%	28%	8%
Maternal mental health team	1,214	912	12%	3%	8%	1%	4%	2%	6%	2%	23%	7%	2%	0%
Older people team	79	38	28%	26%	5%	0%	9%	0%	69%	79%	53%	53%	24%	11%
Pacific people team	216	115	5%	3%	2%	3%	12%	10%	9%	3%	19%	12%	28%	9%
Specialty team	319	60	18%	0%	17%	5%	16%	8%	16%	3%	48%	25%	25%	7%
Total	17,000	9,307	18%	5%	20%	4%	26%	15%	12%	5%	23%	15%	17%	5%

Second 6 HoNOS items												
Team type	DEP		OTH		REL		ADL		LIV		OCC	
	Adm	Disch	Adm	Disch	Adm	Disch	Adm	Disch	Adm	Disch	Adm	Disch
Alcohol and drug team	36%	13%	48%	17%	43%	22%	13%	4%	10%	3%	20%	11%
Child and youth team	57%	19%	64%	33%	53%	28%	32%	14%	19%	5%	19%	10%
Community team	56%	20%	72%	36%	44%	23%	20%	8%	12%	5%	23%	10%
Eating disorders team	60%	45%	98%	72%	33%	33%	22%	11%	2%	1%	8%	5%
Forensic team	23%	3%	40%	5%	34%	2%	5%	1%	37%	21%	42%	20%
Kaupapa Māori team	46%	15%	59%	25%	46%	30%	17%	8%	16%	8%	22%	9%
Maternal mental health team	75%	16%	84%	36%	38%	19%	19%	3%	11%	3%	14%	3%
Older people team	32%	11%	57%	26%	42%	47%	68%	68%	14%	11%	34%	16%
Pacific people team	28%	10%	43%	17%	34%	13%	12%	4%	12%	6%	13%	3%
Specialty team	41%	18%	69%	32%	39%	15%	29%	5%	14%	7%	30%	8%
Total	56%	19%	71%	35%	44%	23%	20%	8%	13%	6%	22%	10%

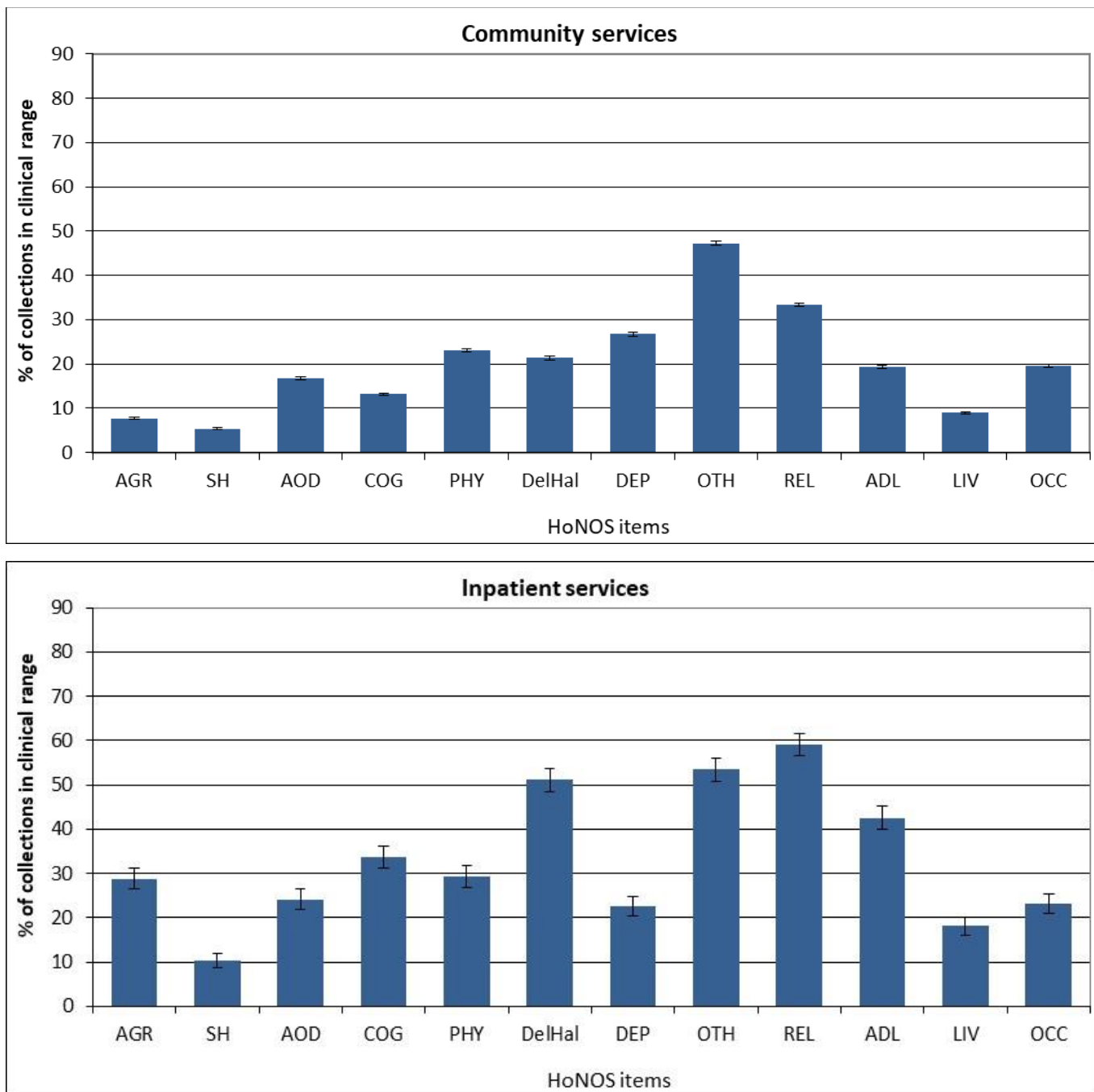
Inpatient services

First 6 HoNOS items														
Team type	N		AGR		SH		AOD		COG		PHY		DeIHal	
	Adm	Disch	Adm	Disch	Adm	Disch	Adm	Disch	Adm	Disch	Adm	Disch	Adm	Disch
Alcohol and drug team	270	252	6%	7%	4%	1%	99%	100%	3%	4%	16%	18%	1%	0%
Eating disorders team	37	35	5%	9%	24%	14%	8%	11%	3%	11%	59%	43%	3%	0%
Inpatient team	9,552	8,864	45%	9%	34%	9%	43%	22%	24%	9%	21%	12%	51%	18%
Maternal mental health team	97	70	12%	9%	16%	4%	7%	4%	12%	3%	20%	11%	17%	7%
Older people team	32	33	34%	18%	13%	6%	9%	0%	44%	36%	47%	48%	35%	36%
Total	10,008	9,267	44%	9%	33%	9%	44%	24%	23%	9%	21%	13%	49%	18%

Second 6 HoNOS items													
Team type	DEP		OTH		REL		ADL		LIV		OCC		
	Adm	Disch	Adm	Disch	Adm	Disch	Adm	Disch	Adm	Disch	Adm	Disch	
Alcohol and drug team	30%	18%	16%	10%	1%	2%	2%	2%	2%	4%	2%	3%	
Eating disorders team	62%	51%	97%	91%	32%	29%	41%	11%	3%	3%	8%	6%	
Inpatient team	48%	19%	70%	30%	54%	31%	32%	11%	23%	11%	28%	15%	
Maternal mental health team	74%	50%	80%	65%	38%	37%	24%	13%	11%	6%	6%	9%	
Older people team	31%	18%	56%	22%	58%	42%	47%	64%	32%	17%	35%	18%	
Total	48%	19%	68%	30%	53%	30%	31%	11%	23%	10%	28%	15%	

Notes: Percentage of service users in the clinical range (2, 3 or 4) for each HoNOS item. Community discharge does not include discharge to an inpatient unit. **Interpretation:** The higher the percentage, the more prevalent the difficulty measured by the item is amongst service users. A greater decrease between admission to discharge suggests a better outcome for the difficulty measured by the item. Items that show medium to high frequency and less change may suggest possible targets for service improvement. **Target:** A greater decrease from admission to discharge and smaller percentage in clinical range at discharge.

Graph 7b: Percentage of collections in clinical range on each HoNOS item (review collections), New Zealand, Jan - Dec 2017



Notes: Percentage of service users in the clinical range (2, 3 or 4) for each HoNOS item on review collections. Due to most admission being less than 91 days, the data set for review collections in inpatient settings is relatively small.

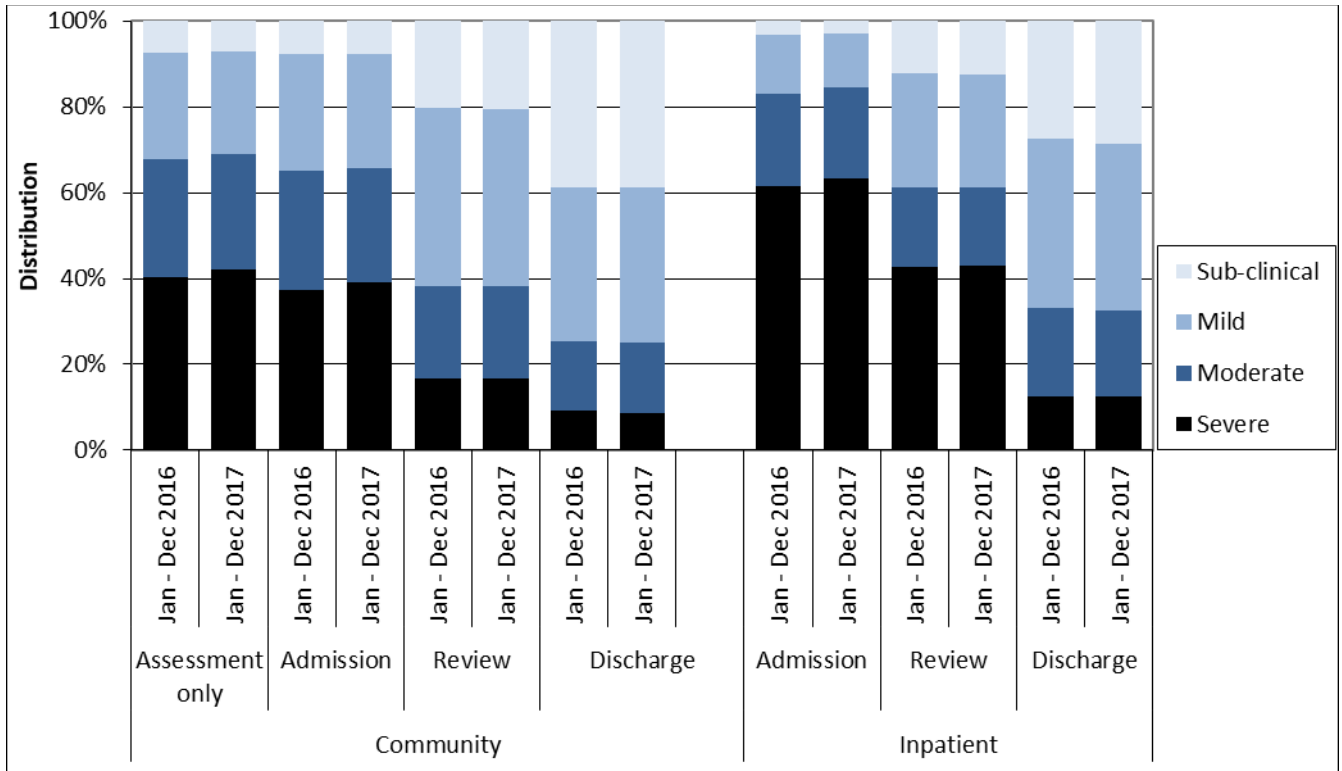
Interpretation: The longer the bar, the more prevalent the difficulty measured by the item is amongst service users.

Table 7b: Percentage of collections in clinical range on each HoNOS item (review collections) by team, New Zealand, Jan - Dec 2017

Team type	N	AGR	SH	AOD	COG	PHY	DelHal	DEP	OTH	REL	ADL	LIV	OCC
Community services													
Alcohol and drug team	724	6%	5%	44%	5%	30%	2%	22%	27%	22%	7%	8%	12%
Child and youth team	276	13%	11%	10%	21%	19%	11%	31%	61%	47%	24%	6%	23%
Co-existing problem team	37	5%	22%	30%	16%	19%	8%	46%	65%	46%	8%	11%	43%
Community team	38,532	8%	6%	16%	13%	23%	22%	27%	48%	34%	20%	9%	20%
Eating disorders team	246	5%	9%	14%	8%	24%	12%	49%	88%	30%	14%	2%	7%
Forensic team	137	3%	0%	4%	1%	7%	18%	4%	15%	10%	4%	52%	60%
Intellectual disability dual diagnosis team	35	23%	6%	0%	69%	40%	17%	17%	46%	76%	60%	14%	23%
Kaupapa Māori team	3,016	11%	4%	26%	16%	25%	27%	22%	37%	32%	17%	13%	20%
Maternal mental health team	1,342	8%	4%	3%	4%	16%	2%	55%	77%	34%	10%	7%	8%
Older people team	205	21%	0%	1%	78%	52%	15%	20%	31%	38%	74%	8%	19%
Pacific people team	1,372	3%	1%	12%	6%	16%	18%	9%	19%	13%	17%	6%	14%
Residential/accommodation team	20	20%	0%	5%	25%	25%	35%	10%	5%	10%	25%	0%	5%
Specialty team	368	6%	3%	18%	11%	8%	32%	16%	40%	27%	17%	8%	15%
Total	46,314	8%	5%	17%	13%	23%	21%	27%	47%	33%	19%	9%	20%
Inpatient services													
Forensic team	72	25%	4%	3%	55%	39%	76%	7%	50%	83%	50%	24%	25%
Inpatient team	1,312	29%	11%	25%	33%	29%	50%	23%	54%	58%	42%	18%	23%
Total	1,398	29%	10%	24%	34%	29%	51%	23%	53%	59%	43%	18%	23%

Notes: Percentage of service users in the clinical range (2, 3 or 4) for each HoNOS item on review collections. Due to most admission being less than 91 days, the data set for review collections in inpatient settings is relatively small. **Interpretation:** The higher the percentage, the more prevalent the difficulty measured by the item is amongst service users.

Graph 8: Index of Severity ratings for HoNOS by collection type, New Zealand, Jan - Dec 2016 and Jan - Dec 2017



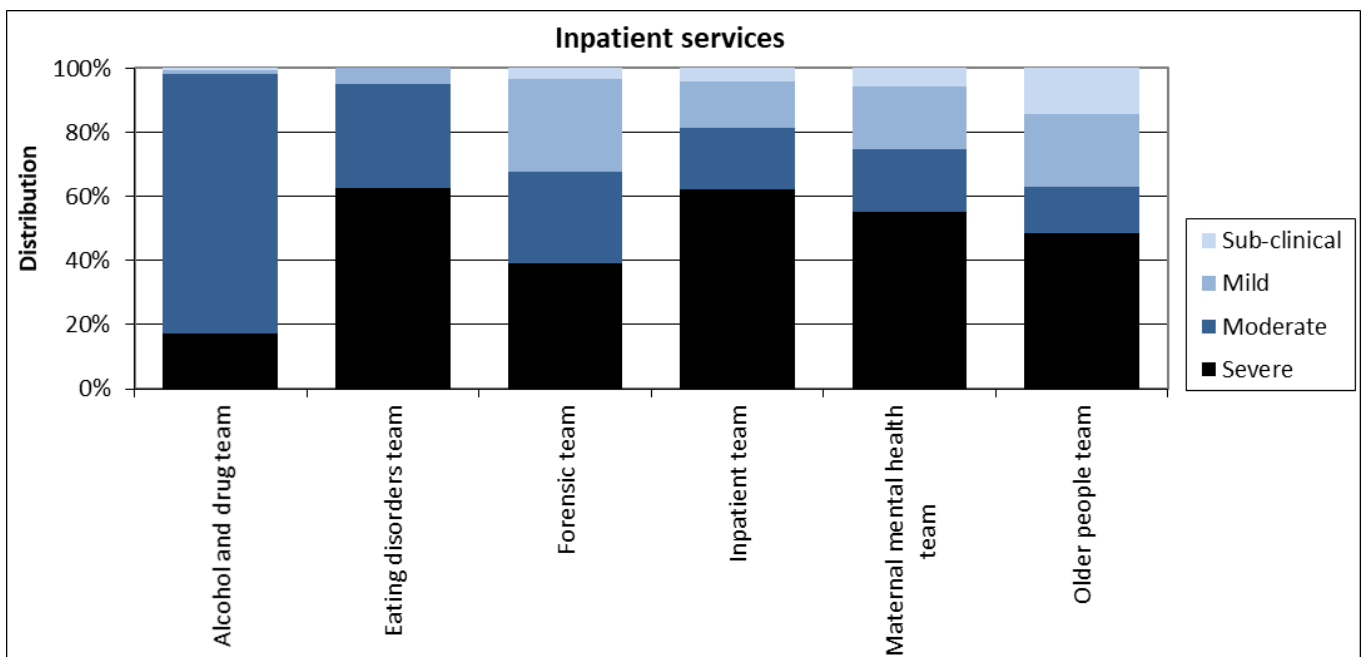
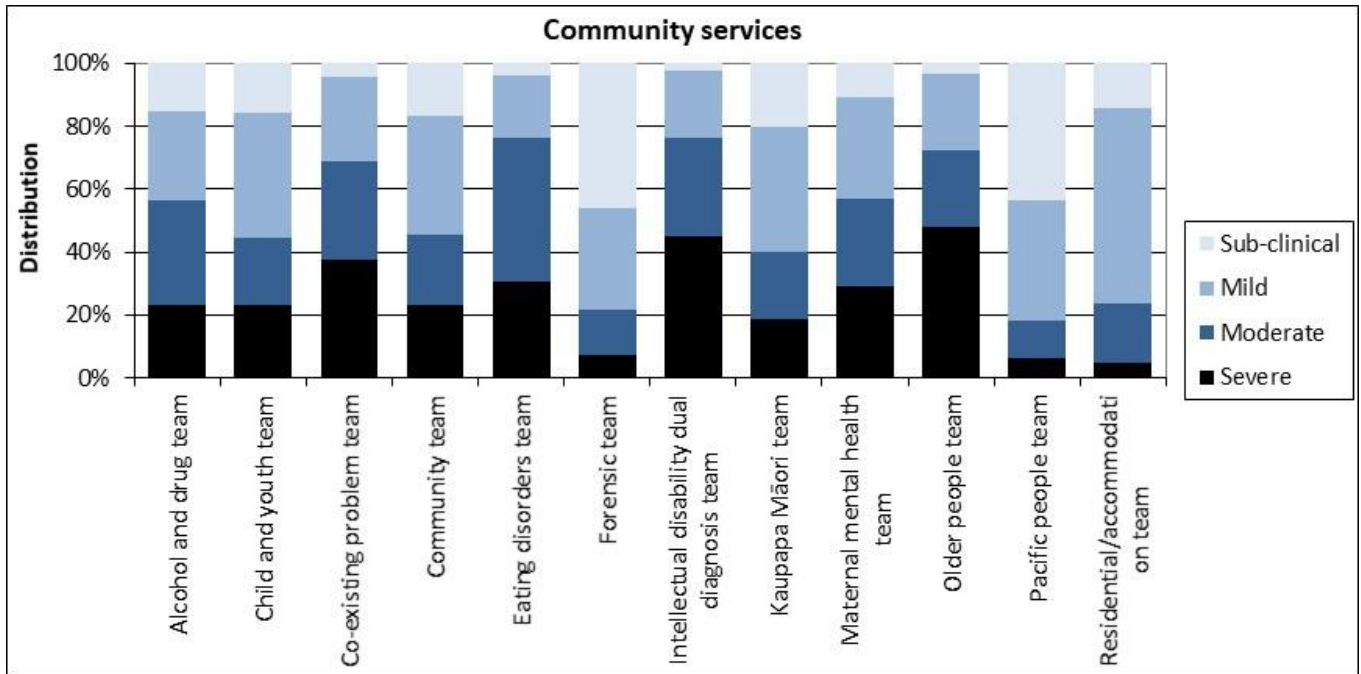
Notes: Community discharge does not include discharge to an inpatient unit. Index of Severity: Sub clinical = all items <2, mild = at least one item >1 and all items <3, moderate = at least one item >=3, severe = at least 2 items >=3 using first 10 items. Community discharge does not include discharge to an inpatient unit.

Interpretation: Darker bars indicate higher overall level of severity. More positive outcome shown by larger decrease in darker sections of bar between admission and discharge.

3. Other measures of service activity

This section presents other information related to data collected in PRIMHD that may be helpful for understanding how teams are operating. This includes information relevant to caseload intensity and team activity.

Graph 9: Index of Severity for HoNOS (admission and review collections) by team, New Zealand, Jan - Dec 2017



Notes: Only data related to collection at admission and review is included so that results reflect the severity of service users during their engagement with the service. Index of Severity: Sub clinical = all items <2, mild = at least one item >1 and all items <3, moderate = at least one item >=3, severe = at least 2 items >=3 using first 10 items.

Interpretation: This graph gives an impression of the overall severity of the caseload for different teams at admission. The longer the darker bar, the higher the overall severity of the team’s caseload.

Table 9: Index of Severity for HoNOS by collection type and team, New Zealand, Jan - Dec 2017

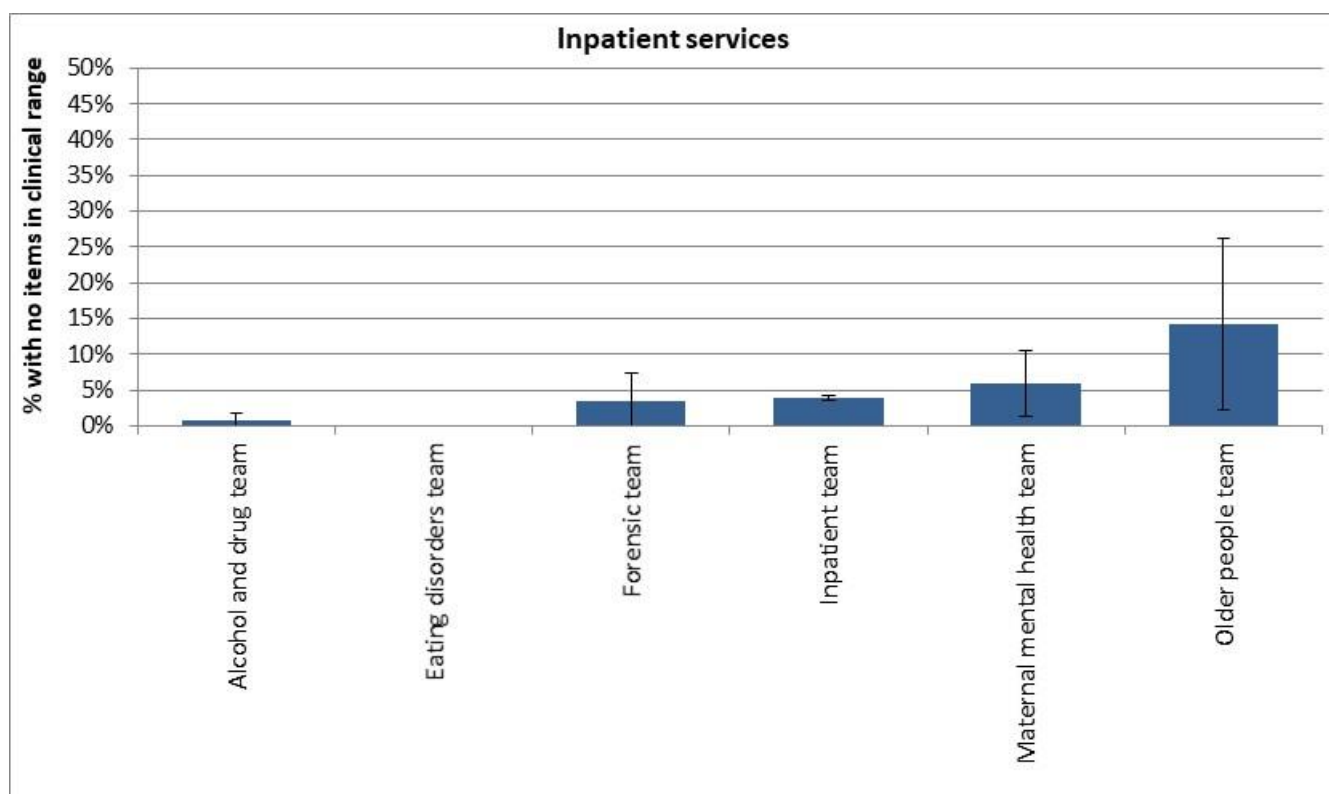
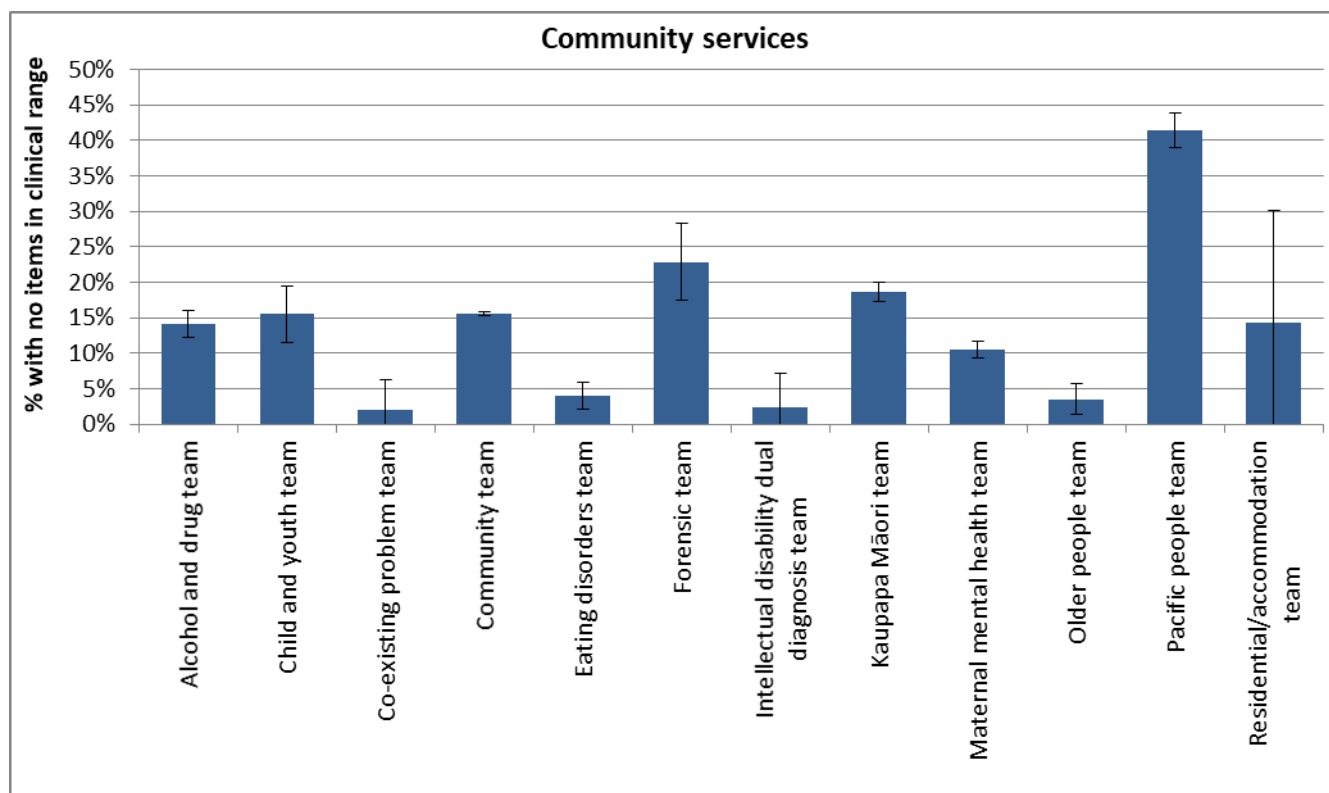
Team type	Assessment only					Admission					Review					Discharge				
	Sub	Mild	Mod	Sev	N	Sub	Mild	Mod	Sev	N	Sub	Mild	Mod	Sev	N	Sub	Mild	Mod	Sev	N
Community services																				
Alcohol and drug team	3%	10%	31%	56%	405	5%	18%	44%	34%	521	23%	36%	26%	15%	724	35%	35%	22%	8%	246
Child and youth team	16%	26%	34%	24%	50	8%	28%	25%	40%	53	17%	42%	21%	20%	276	44%	36%	14%	7%	87
Co-existing problem team											5%	30%	32%	32%	37					
Community team	7%	25%	27%	42%	9,732	8%	27%	25%	40%	13,781	20%	42%	21%	17%	38,564	37%	37%	17%	9%	7,292
Eating disorders team	0%	18%	62%	21%	34	0%	8%	52%	40%	181	7%	28%	41%	24%	246	18%	30%	33%	18%	141
Forensic team	30%	48%	15%	7%	27	29%	32%	27%	11%	99	58%	32%	5%	4%	137	75%	17%	7%	1%	183
Intellectual disability dual diagnosis team											3%	23%	29%	46%	35					
Kaupapa Māori team	5%	23%	28%	43%	300	9%	34%	26%	31%	528	22%	41%	21%	16%	3,016	38%	35%	15%	12%	227
Maternal mental health team	23%	31%	24%	21%	264	7%	26%	30%	38%	1,214	14%	38%	26%	21%	1,342	52%	34%	8%	5%	912
Older people team	3%	26%	29%	41%	34	0%	13%	24%	63%	79	5%	28%	24%	42%	205	11%	13%	24%	53%	38
Pacific people team						29%	31%	25%	14%	216	46%	39%	10%	5%	1,373	62%	24%	11%	3%	115
Residential/accommodation team											15%	60%	20%	5%	20					
Specialty team	10%	5%	38%	46%	39	7%	28%	25%	41%	319	25%	45%	20%	10%	368	37%	43%	12%	8%	60
Total	7%	24%	27%	42%	10,899	8%	27%	27%	39%	17,023	21%	41%	21%	17%	46,358	39%	36%	16%	9%	9,316

Team type	Assessment only					Admission					Review					Discharge				
	Sub	Mild	Mod	Sev	N	Sub	Mild	Mod	Sev	N	Sub	Mild	Mod	Sev	N	Sub	Mild	Mod	Sev	N
Inpatient services																				
Alcohol and drug team						1%	1%	81%	17%	270						0%	0%	88%	12%	252
Eating disorders team						0%	3%	32%	65%	37						3%	23%	31%	43%	35
Forensic team											1%	32%	25%	42%	72					
Inpatient team						3%	13%	20%	65%	9,567	13%	26%	18%	43%	1,313	30%	40%	18%	12%	8,867
Maternal mental health team						4%	19%	19%	59%	97						14%	41%	20%	24%	70
Older people team						13%	22%	13%	53%	32						12%	30%	21%	36%	33
Total						3%	13%	21%	63%	10,023	13%	26%	18%	43%	1,399	29%	39%	20%	12%	9,270

Notes: Sub = sub clinical, Mild = mild, Mod = moderate, Sev = severe on Index of Severity. Only admission collection data is included so that results reflect the severity of service users during their engagement with the service. Index of Severity: Sub clinical = all items <2, mild = at least one item >1 and all items <3, moderate = at least one item >=3, severe = at least 2 items >=3 using first 10 items. Community discharge does not include discharge to an inpatient unit.

Interpretation: Larger percentages in the columns to the right for each type of collection, the higher the overall severity of the team's caseload.

Graph 10: Collections with no HoNOS items in clinical range, New Zealand, Jan - Dec 2017



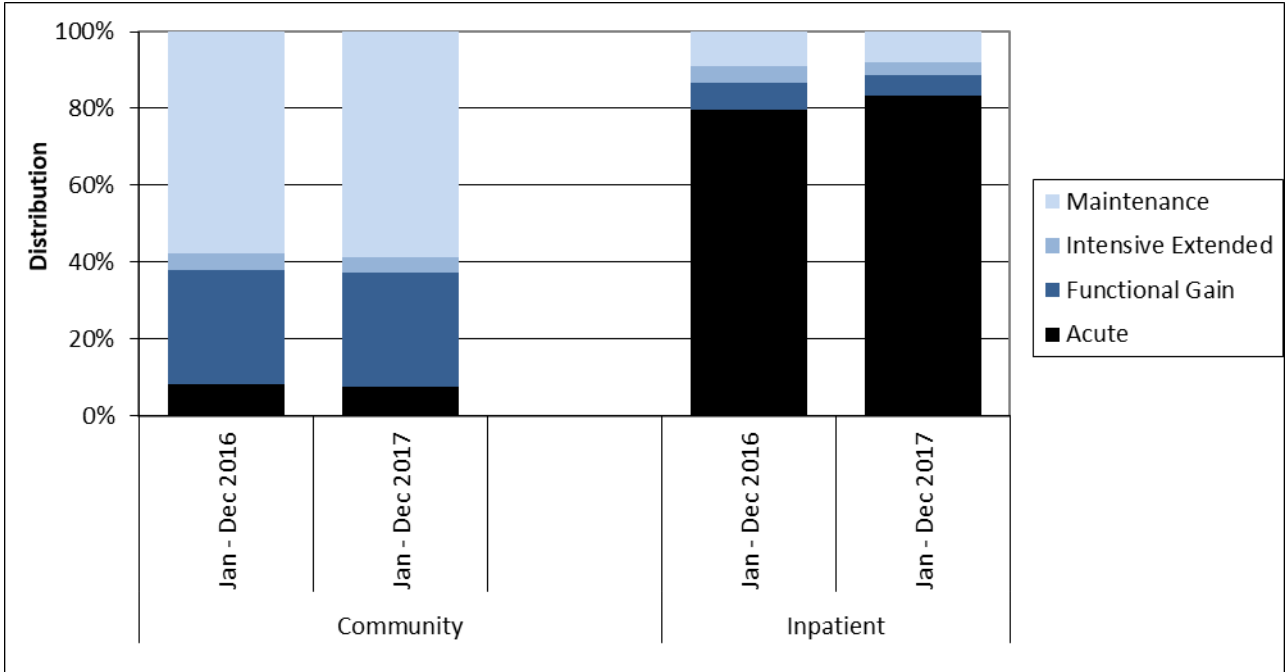
Notes: Includes admission and review collections. Shows percentage of service users with all HoNOS items less than two, ie no HoNOS items in the clinical range. **Interpretation:** There are a variety of reasons that may make it appropriate for service users to remain in the service even though they show no HoNOS items in the clinical range. However, teams showing a larger or substantial percentage of service users with no HoNOS items in the clinical range could benefit from reviewing these cases to ensure that the service remains appropriate for this service user.

Table 10: Collections with no HoNOS items in clinical range, New Zealand, Jan - Dec 2017

Team type	Number of collections with no items in clinical range	Percentage with no items in clinical range
Community services		
Alcohol and drug team	176	14%
Child and youth team	51	16%
Co-existing problem team	1	2%
Community team	8,171	16%
Eating disorders team	17	4%
Forensic team	54	23%
Intellectual disability dual diagnosis team	1	2%
Kaupapa Māori team	661	19%
Maternal mental health team	268	10%
Older people team	10	4%
Pacific people team	657	41%
Residential/accommodation team	3	14%
Specialty team	107	16%
Total	10,178	16%
Inpatient services		
Alcohol and drug team	2	1%
Eating disorders team	0	0%
Forensic team	3	3%
Inpatient team	416	4%
Maternal mental health team	6	6%
Older people team	5	14%
Total	432	4%

Notes: For further information see notes for Graph 10.

Graph 11: Focus of care categories, New Zealand, Jan - Dec 2016 and Jan - Dec 2017



Notes: Data from review and discharge collections.

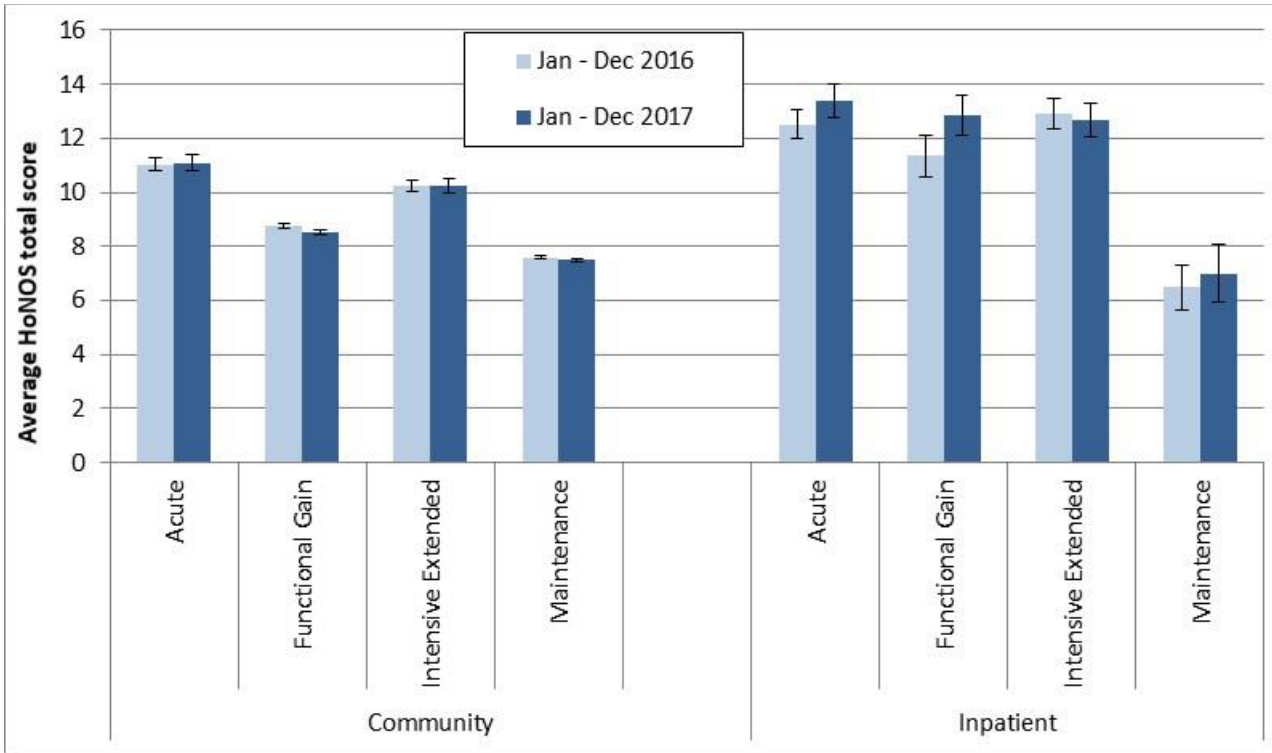
Interpretation: Darker bars indicate more intensive involvement in care, so a longer or darker bar in general suggests more intensive working. A longer functional gain bar and shorter maintenance bar potentially suggests more recovery focused ways of working.

Table 11: Focus of care categories by team, New Zealand, Jan - Dec 2016 and Jan - Dec 2017

Team type	Acute		Functional gain		Intensive extended		Maintenance		Number of collections	
	Last period	This period	Last period	This period	Last period	This period	Last period	This period	Last period	This period
Community services										
Alcohol and drug team	7%	9%	24%	37%	1%	1%	67%	53%	1,431	963
Child and youth team	6%	4%	35%	32%	9%	11%	51%	53%	363	354
Co-existing problem team	3%	8%	0%	16%	3%	2%	93%	73%	29	49
Community team	8%	8%	30%	30%	5%	4%	57%	58%	52,114	46,762
Eating disorders team	4%	6%	75%	72%	11%	9%	11%	13%	631	376
Forensic team	6%	4%	4%	1%	0%	1%	90%	94%	177	236
Intellectual disability dual diagnosis team	8%	3%	8%	13%	0%	0%	85%	84%	40	38
Kaupapa Māori team	8%	5%	21%	15%	5%	3%	66%	77%	3,458	3,056
Maternal mental health team	8%	11%	50%	52%	3%	2%	39%	34%	2,224	2,369
Needs assessment and service coordination team	52%		16%		4%		28%		25	
Older people team	9%	6%	13%	8%	6%	9%	72%	77%	242	227
Pacific people team	1%	1%	10%	11%	0%	0%	89%	88%	1,852	1,424
Residential/accommodation team		0%		5%		10%		86%		21
Specialty team	2%	3%	58%	56%	4%	4%	37%	38%	513	448
Total	8%	8%	30%	30%	5%	4%	58%	59%	63,119	56,345
Inpatient services										
Alcohol and drug team	100%	99%	0%	1%	0%	0%	0%	0%	270	254
Eating disorders team	82%	67%	16%	22%	3%	3%	0%	8%	38	36
Forensic team	11%	18%	3%	9%	74%	63%	11%	10%	87	78
Inpatient team	79%	83%	7%	6%	4%	3%	9%	8%	10,140	9,833
Maternal mental health team	93%	82%	2%	4%	0%	0%	4%	13%	91	67
Older people team	73%	70%	0%	6%	4%	0%	23%	24%	26	33
Total	80%	83%	7%	6%	4%	3%	9%	8%	10,657	10,304

Notes: For further information see notes for Graph 11.

Graph 12: HoNOS total score (review collections) by focus of care, New Zealand, Jan - Dec 2016 and Jan - Dec 2017



Notes: This data is just for review collections.

Interpretation: Points are significantly different if error bars don't overlap. A general downward trend in scores from acute to maintenance focus of care might be expected.

Table 12: HoNOS total score (review collections) by focus of care by team, New Zealand, Jan - Dec 2017

Team type	Acute			Functional gain			Intensive extended			Maintenance		
	N	Mean	CI	N	Mean	CI	N	Mean	CI	N	Mean	CI
Community services												
Alcohol and drug team	46	10.3	8.9-11.6	157	7.6	6.9-8.3				480	5.0	4.6-5.3
Community team	1,403	11.3	11.0-11.6	84	8.8	7.6-10.1	33	10.2	7.9-12.4	145	8.4	7.5-9.3
Co-existing problem team										31	8.8	7.2-10.4
Community team				10,771	8.6	8.5-8.7	1,713	10.3	10.0-10.6	23,298	7.6	7.5-7.7
Eating disorders team				171	7.8	7.1-8.5	30	11.5	9.1-13.9	30	9.1	7.2-11.0
Forensic team										127	7.1	6.3-7.9
Intellectual disability dual diagnosis team										29	12.8	11.0-14.6
Kaupapa Māori team	116	12.9	11.7-14.1	409	10.0	9.3-10.7	72	8.4	7.2-9.7	2,163	8.1	7.9-8.4
Maternal mental health team	132	6.8	6.0-7.6	736	8.1	7.7-8.4	29	8.5	6.6-10.4	419	5.5	5.2-5.9
Older people team										145	11.3	10.6-12.1
Pacific people team				120	5.7	4.8-6.6				1,160	5.2	4.9-5.4
Specialty team				197	7.2	6.6-7.8				139	6.0	5.3-6.7
Total	1,734	11.1	10.8-11.4	12,674	8.5	8.4-8.6	1,910	10.2	10.0-10.5	28,189	7.5	7.4-7.6
Inpatient services												
Forensic team							48	14.8	13.1-16.4			
Inpatient team	746	13.4	12.8-14.0	220	13.0	12.3-13.8	215	12.2	11.6-12.9	125	6.9	5.8-8.0
Total	760	13.4	12.8-14.0	229	12.9	12.1-13.6	264	12.7	12.1-13.3	133	7.0	5.9-8.1

Notes: For further information see notes for Graph 12.