

PRIMHD summary report - HoNOS

Health of the Nation Outcomes Scales – working age adults report for New Zealand



This report summarises national Programme for the Integration of Mental Health Data (PRIMHD) data submitted by district health boards (DHBs). In particular, it presents Health of the National Outcomes Scale working aged adults (HoNOS) data, from services where HoNOS is the primary measure.

This report is organised into three major sections that provide information about:

1. **Outcomes related information:** This provides indications about what changes have occurred for service users between entering and leaving the service. Outcome is assessed by comparing the group admitted and the group discharged from the service in the same time period. This should provide a reasonable indication of outcomes achieved unless the service user mix has changed significantly over the usual period for which service is delivered.
2. **Service related information:** This provides information about the services, such as the overall severity of service users who use different services.
3. **Collection completion and validity:** This details the completeness of the data set provided by your mental health services. This is important because it indicates how valid and reliable the data sets are likely to be. The less complete the data set, the less valid the information is likely to be.

In many cases the data is presented graphically for New Zealand, and then presented as a table for the individual team types (see team type classification factsheet).

The time period covered differs for the different data presented. See the title or the notes under the graphs or tables for information about the time period covered. Unless otherwise stated, the notes under the graphs also apply to the corresponding table.

For all graphs and tables, if there are less than twenty cases in the data set, then the information is not presented. This is because small samples frequently provide inaccurate and potentially misleading results. See the notes and user guide for other important information about the graphs and tables.

Where appropriate, the statistical **confidence interval** is presented. This is shown by error bars (small lines above and below the average) on the graphs, and a score range in some tables. As a rule of thumb, if the confidence intervals of two data points do not overlap, the two points can be considered to be significantly different. If the confidence intervals of the data points do overlap, we assume the points are not significantly different. It is important to note that statistical significance may not indicate a clinically significant difference. **See the associated user guide for more information** about how to understand and use the data presented in this report.

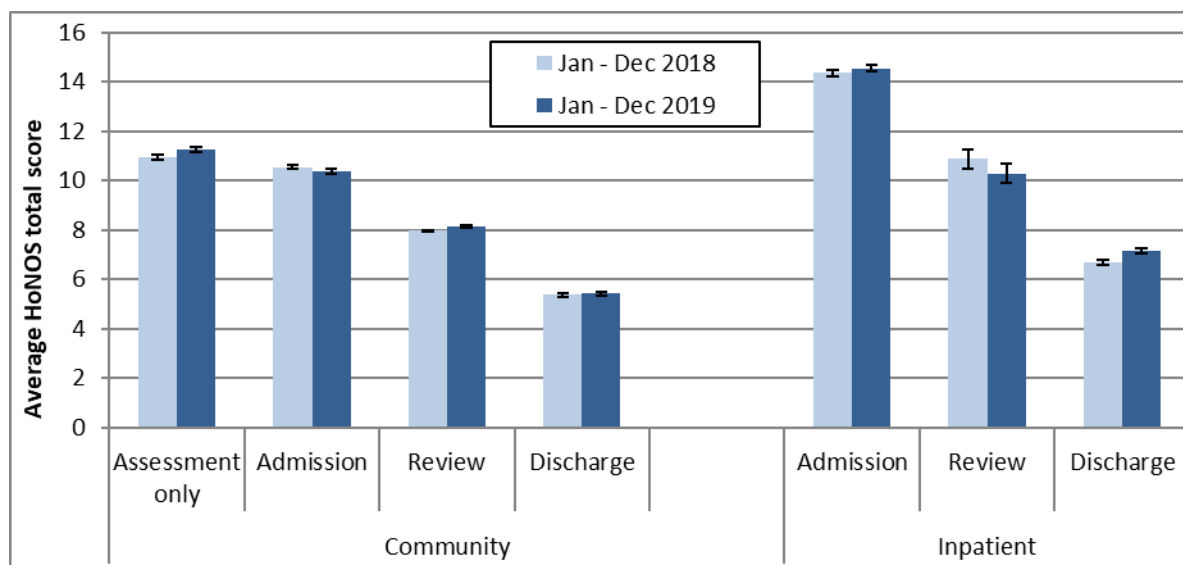
Data for graphs 11 and 12 was extracted 15 April 2020 from PRIMHD by the Ministry of Health and formatted by Te Pou. The data for graphs and tables 1 to 10 and 13 was extracted 17 April 2020 from PRIMHD by the Ministry of Health, then analysed and formatted by Te Pou.

Please note: For this period a few DHBs have incomplete data which will affect New Zealand totals.

1. Outcomes – changes in service user status

This section presents HoNOS data indicating the status of service users at different stages of their contact with DHB mental health services. Graph and Table 1 and 2 show results from HoNOS total scores. Graphs and Tables 3 to 5b show results related to the percentage of HoNOS items in the clinical range. Graph and Table 6 show results from the Index of Severity derived from HoNOS scores.

Graph 1: Average HoNOS total score (12 items) by collection type, New Zealand, Jan - Dec 2018 and Jan - Dec 2019



Notes: Error bars indicate the confidence intervals around the data point. If error bars overlap the data points are not significantly different. Community discharge does not include discharge to an inpatient unit.

Interpretation: Decrease between admission and discharge is an indication of the outcomes achieved by the service user and service. The greater the decrease between admission and discharge, and the lower the average HoNOS score at discharge, the more positive the outcome.

Target: A greater decrease from admission to discharge and lower average rating at discharge.

Table 1: Average HoNOS total score (12 items), by collection type and team, New Zealand, Jan - Dec 2019

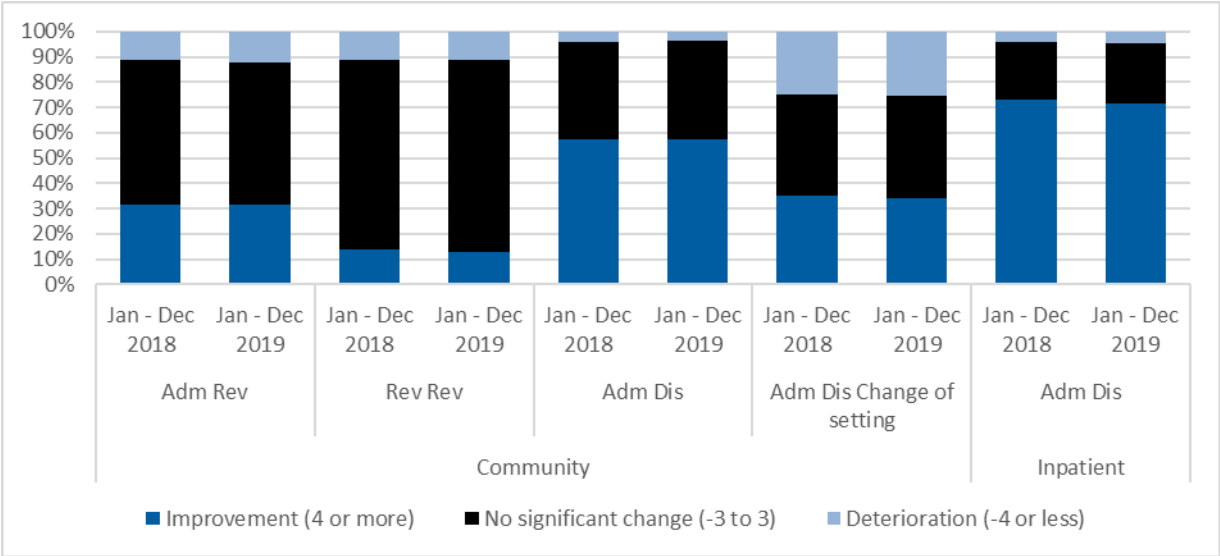
Team type	Assessment only			Admission			Review			Discharge		
	N	Mean	CI	N	Mean	CI	N	Mean	CI	N	Mean	CI
Community services												
Alcohol and drug team	304	10.1	9.4-10.8	522	10.2	9.8-10.7	599	6.9	6.5-7.3	268	5.4	4.9-6.0
Child and youth team	44	10.1	8.3-11.9	64	10.6	9.0-12.2	209	10.1	9.1-11.1	74	7.2	6.0-8.4
Co-existing problem team							29	9.6	7.1-12.1			
Community team	11,312	11.3	11.2-11.4	12,193	10.5	10.4-10.6	35,780	8.2	8.2-8.3	6,969	5.6	5.5-5.7
Early intervention team				332	10.3	9.6-10.9	1,306	8.2	7.9-8.5	124	5.2	4.4-6.1
Eating disorders team	28	10.9	8.9-12.8	305	11.6	11.0-12.3	297	9.3	8.7-10.0	179	5.7	5.0-6.5
Forensic team	65	8.8	7.4-10.1	87	10.9	9.7-12.1	126	6.9	6.1-7.7	112	5.3	4.5-6.2
Kaupapa Māori team	497	12.2	11.8-12.7	586	11.0	10.6-11.5	3,386	8.8	8.6-9.0	329	6.6	6.1-7.2
Maternal mental health team	156	6.4	5.6-7.2	1,013	8.6	8.3-9.0	1,249	6.8	6.6-7.1	938	3.5	3.3-3.7
Needs assessment and service coordination team							113	8.4	7.5-9.3			
Older people team	30	11.4	9.2-13.6	75	10.4	9.2-11.6	115	9.6	8.5-10.7	42	7.7	6.2-9.2
Pacific people team				147	7.8	6.9-8.6	1,125	5.0	4.8-5.3	76	3.0	2.3-3.6
Specialty team	104	16.2	14.3-18.0	51	10.9	9.4-12.4	29	11.5	9.4-13.6			
Total	12,579	11.3	11.2-11.4	15,402	10.4	10.3-10.5	44,381	8.2	8.1-8.2	9,140	5.4	5.3-5.5

Team type	Assessment only			Admission			Review			Discharge		
	N	Mean	CI	N	Mean	CI	N	Mean	CI	N	Mean	CI
Inpatient services												
Alcohol and drug team				258	9.0	8.5-9.6				243	7.0	6.6-7.4
Eating disorders team				23	10.0	7.9-12.1				20	8.0	6.0-10.0
Forensic team				31	12.2	8.6-15.9	75	11.7	10.4-13.0	34	4.0	2.1-5.8
Inpatient team				9,114	14.8	14.6-14.9	1,121	10.2	9.8-10.7	8,773	7.1	7.0-7.3
Maternal mental health team				95	11.2	10.0-12.5				70	7.5	6.3-8.6
Older people team				33	14.2	11.8-16.5				28	8.6	5.8-11.4
Specialty team										34	8.9	7.5-10.2
Total				9,576	14.6	14.4-14.7	1,223	10.3	9.9-10.7	9,204	7.1	7.0-7.3

Notes: N = number of collections in period. Average = average HoNOS (12 item) score, CI = confidence interval for average score. Community discharge does not include discharges to an inpatient unit.

Interpretation: If confidence intervals for two scores do not overlap, then the scores are statistically significantly different. It is important to note that statistical significance may not indicate a clinically significant difference.

Graph 2: Difference in HoNOS total score (12 items) of matched pairs by pair type and setting, New Zealand, Jan - Dec 2018 and Jan - Dec 2019



Notes: Shows the difference of the matched pair between the start and end HoNOS total score.

Interpretation: The graphs compare two time periods. Dark blue band indicates percentage improvement within the given time period, while black band indicates no significant change and light blue deterioration. Improvement = 4 or more, no significant change = -3 to 3 and deterioration = -4 or less.

Target: A greater percentage increase in improvement for both community and inpatient settings and a smaller percentage in deterioration.

Table 2: Difference in HoNOS total score (12 items) of matched pairs by team, pair type and setting, New Zealand, Jan - Dec 2019

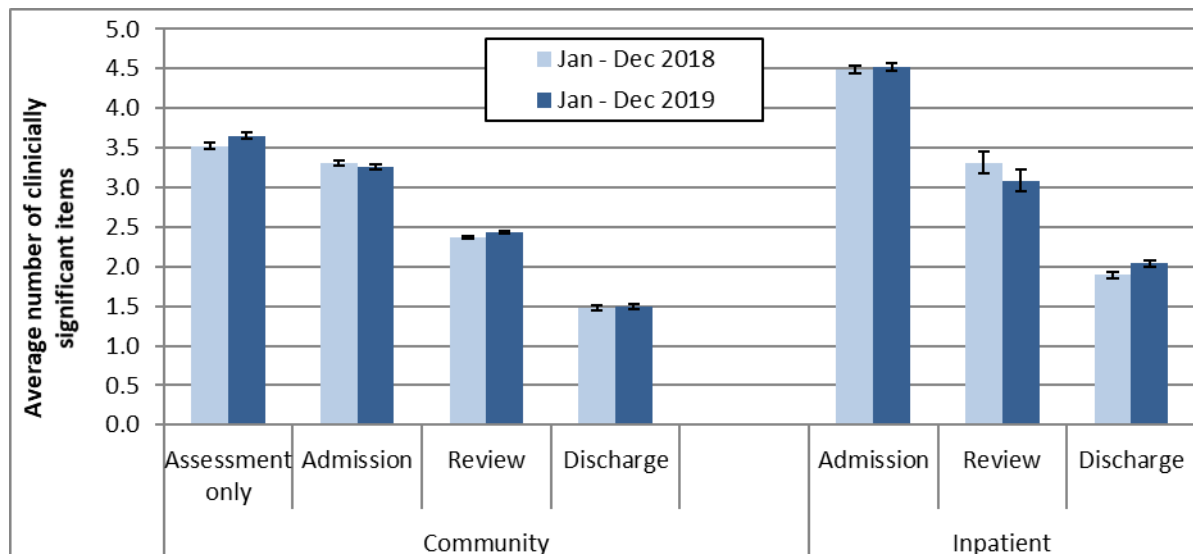
Team Type	Com Adm Rev				Com Rev Rev				Com Adm Dis				Com Adm Dis Change of setting			
	↓ Det	No SC	↑ Imp	N	↓ Det	No SC	↑ Imp	N	↓ Det	No SC	↑ Imp	N	↓ Det	No SC	↑ Imp	N
Alcohol and drug team	11%	59%	30%	83	9%	80%	11%	289	7%	38%	55%	191	11%	33%	56%	27
Child and youth team					14%	72%	14%	94								
Community team	12%	57%	31%	3,375	11%	76%	13%	18,977	4%	40%	56%	3,596	27%	40%	34%	2,011
Early intervention team	15%	52%	34%	165	16%	66%	18%	702	6%	38%	56%	77	24%	41%	35%	121
Eating disorders team	7%	60%	33%	43	7%	82%	11%	57	1%	42%	57%	99	10%	49%	41%	70
Forensic team					9%	89%	2%	54	0%	43%	57%	37				
Kaupapa Māori team	13%	59%	28%	211	12%	74%	14%	1,699	7%	43%	50%	149	27%	42%	31%	134
Maternal mental health team	4%	55%	41%	272	9%	74%	17%	455	1%	32%	67%	576	14%	52%	34%	99
Needs assessment and service coordination team					7%	89%	4%	75								
Older people team					15%	62%	23%	39								
Pacific people team	27%	47%	27%	79	10%	80%	11%	649	2%	49%	49%	55	23%	52%	25%	44
Total	12%	56%	32%	4,269	11%	76%	13%	23,129	4%	39%	57%	4,833	25%	41%	34%	2,530

Notes: Shows the difference of the matched pair between the start and end HoNOS total score.

Interpretation: Improvement = 4 or more, no significant change = -3 to 3 and deterioration = -4 or less.

Target: A greater percentage increase in improvement for community setting and a smaller percentage in deterioration.

Graph 3: Average number of clinically significant HoNOS items by collection type, New Zealand, Jan - Dec 2018 and Jan - Dec 2019



Notes: Average number clinically significant items = the average number of items in the clinical range (2, 3 or 4) per collection. Community discharge does not include discharge to an inpatient unit.

Interpretation: Points are significantly different if error bars don't overlap. Decrease between admission and discharge is an indication of the outcomes achieved by the service and service user. A greater decrease between admission and discharge indicates a better outcome. Lower admission score could be indication of service users seeking out and being engaged by services at a lower level of severity.

Target: A greater decrease from admission to discharge and smaller percentage in clinical range at discharge.

Table 3: Average number of clinically significant HoNOS items by collection type and team, New Zealand, Jan - Dec 2019

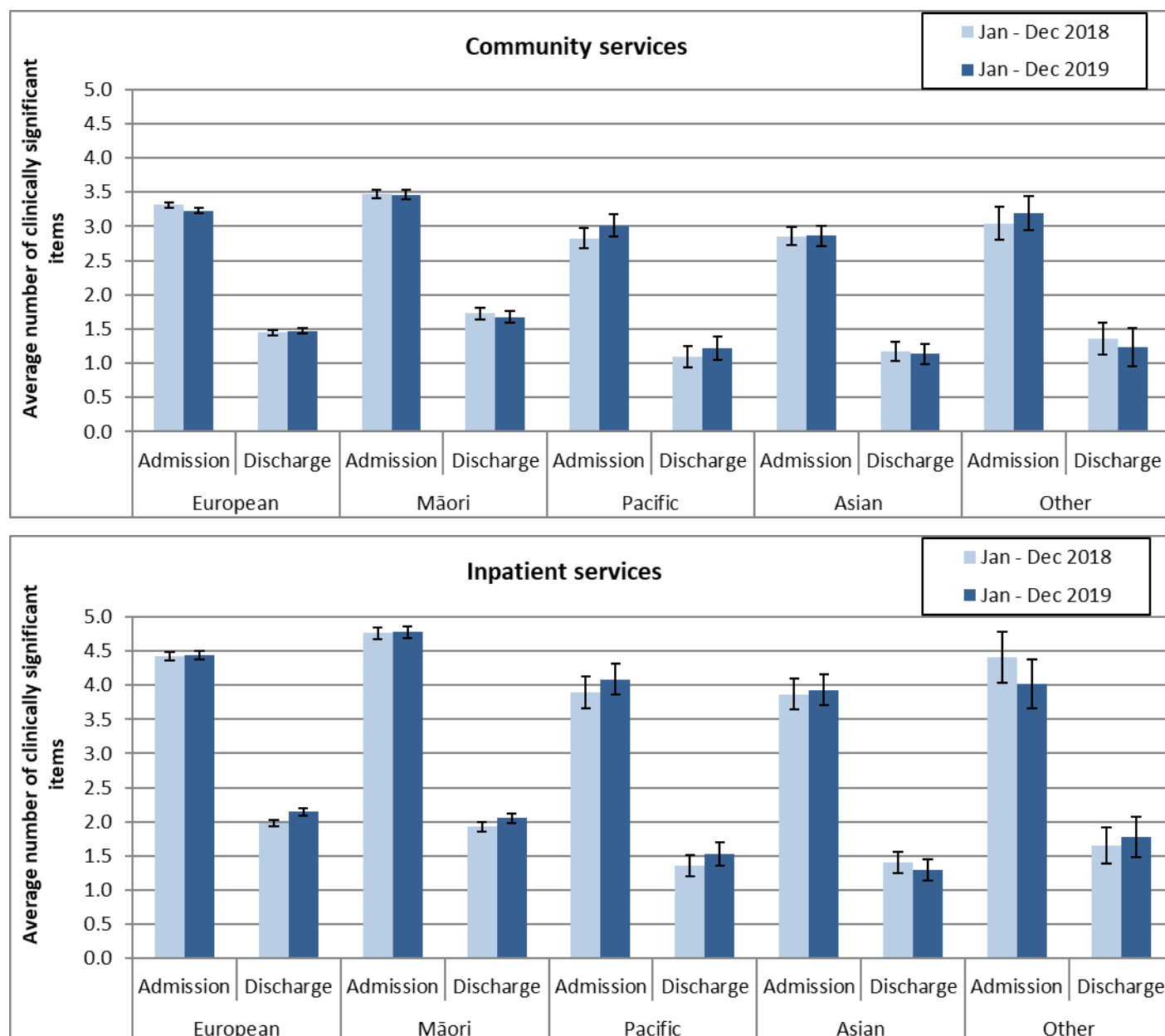
Team type	Assessment only			Admission			Review			Discharge		
	N	Mean	CI	N	Mean	CI	N	Mean	CI	N	Mean	CI
Community service												
Alcohol and drug team	304	3.3	3.0-3.5	522	3.3	3.1-3.4	599	2.0	1.9-2.2	268	1.5	1.3-1.7
Child and youth team	44	3.3	2.6-3.9	64	3.4	2.9-4.0	209	3.1	2.7-3.4	74	2.3	1.8-2.8
Co-existing problem team							29	2.6	1.7-3.5			
Community team	11,312	3.7	3.6-3.7	12,193	3.3	3.3-3.3	35,780	2.5	2.4-2.5	6,969	1.6	1.5-1.6
Early intervention team				332	3.2	3.0-3.5	1,306	2.5	2.3-2.6	124	1.5	1.2-1.8
Eating disorders team	28	3.4	2.7-4.0	305	3.6	3.4-3.8	297	2.8	2.6-3.0	179	1.7	1.4-1.9
Forensic team	65	2.3	1.9-2.7	87	3.0	2.6-3.4	126	1.8	1.6-2.1	112	1.1	0.8-1.3
Kaupapa Māori team	497	4.0	3.8-4.2	586	3.4	3.2-3.6	3,386	2.7	2.6-2.7	329	1.8	1.6-2.0
Maternal mental health team	156	2.0	1.7-2.3	1,013	2.8	2.6-2.9	1,249	2.1	2.0-2.3	938	0.9	0.8-1.0
Needs assessment and service coordination team							113	2.4	2.1-2.8			
Older people team	30	3.2	2.5-4.0	75	3.0	2.6-3.4	115	2.9	2.5-3.3	42	2.2	1.8-2.7
Pacific people team				147	2.3	1.9-2.6	1,125	1.2	1.2-1.3	76	0.6	0.4-0.8
Specialty team	104	4.3	3.8-4.8	51	3.5	2.9-4.1	29	3.6	2.9-4.4			
Total	12,579	3.7	3.6-3.7	15,402	3.3	3.2-3.3	44,381	2.4	2.4-2.5	9,140	1.5	1.5-1.5

Team type	Assessment only			Admission			Review			Discharge		
	N	Mean	CI	N	Mean	CI	N	Mean	CI	N	Mean	CI
Inpatient services												
Alcohol and drug team				258	2.5	2.3-2.7				243	2.0	1.9-2.2
Eating disorders team				23	3.2	2.5-3.9				20	2.6	1.7-3.5
Forensic team				31	3.8	2.6-5.0	75	3.6	3.1-4.1	34	1.0	0.4-1.5
Inpatient team				9,114	4.6	4.5-4.6	1,121	3.1	2.9-3.2	8,773	2.0	2.0-2.1
Maternal mental health team				95	3.6	3.2-4.0				70	2.4	1.9-2.8
Older people team				33	4.2	3.5-5.0				28	2.5	1.7-3.3
Specialty team										34	3.0	2.4-3.5
Total				9,576	4.5	4.5-4.6	1,223	3.1	2.9-3.2	9,204	2.0	2.0-2.1

Notes: N = Number of collections in period. Average = average number of HoNOS items in the clinically significant range (ie scoring 2, 3, or 4), CI = confidence interval for average score. Community discharge does not include discharge to an inpatient unit.

Interpretation: If confidence intervals for two scores do not overlap, then the scores are statistically significantly different. Please note that statistical significance may not indicate a clinically significant difference.

Graph 4: Average number of clinically significant HoNOS items at admission and discharge by ethnic group, New Zealand, Jan - Dec 2018 and Jan - Dec 2019

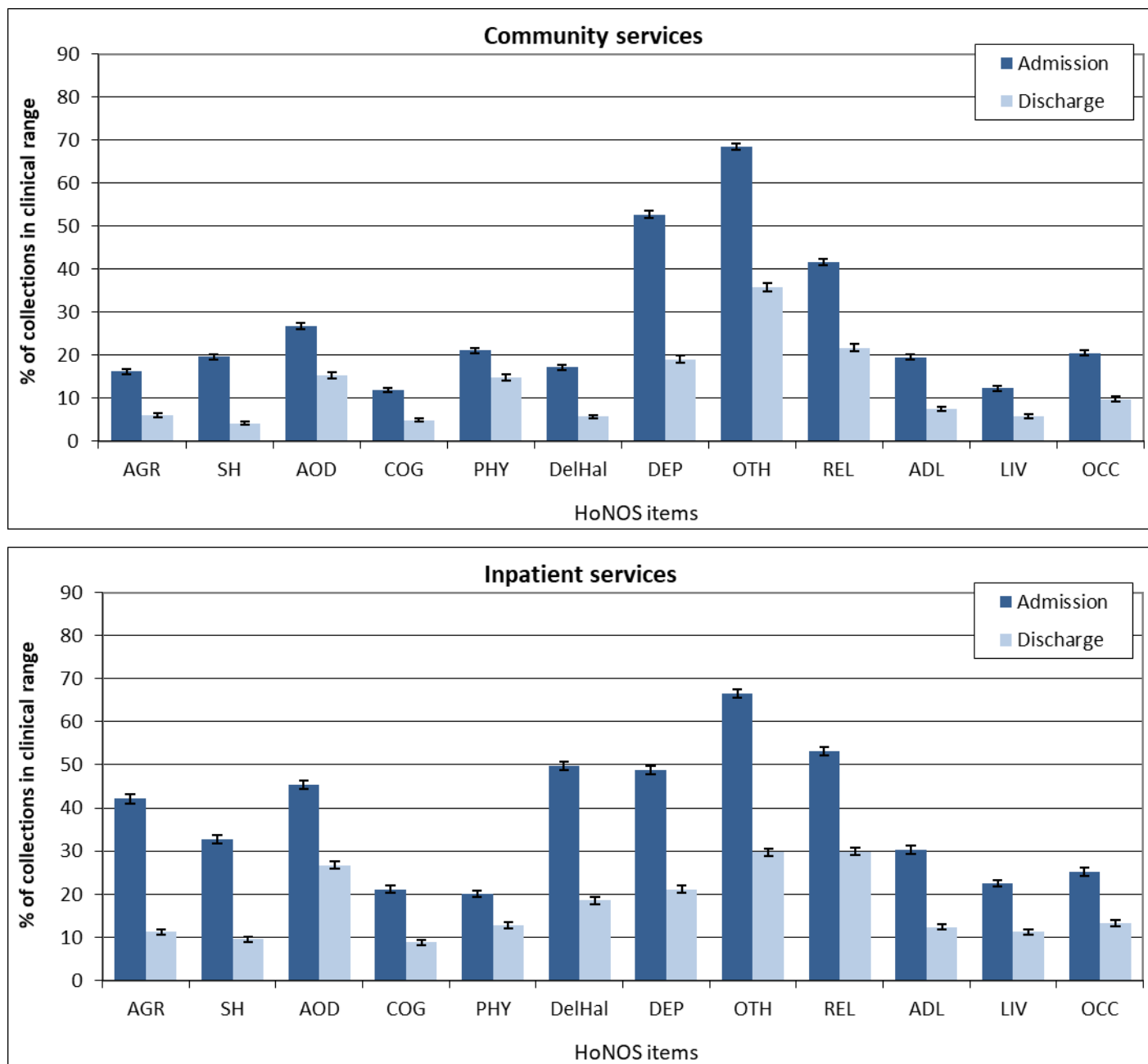


Notes: Average number of HoNOS items in the clinical range (2, 3 or 4). Community discharge does not include discharge to an inpatient unit.

Interpretation: Points are significantly different if error bars don't overlap. Decrease between admission and discharge is an indication of the outcomes achieved by the service and service user. A greater decrease between admission and discharge indicates a better outcome. A lower admission score could be indication of service users seeking out and being engaged by services at a lower level of acuity.

Target: A greater decrease from admission to discharge and smaller percentage in clinical range at discharge.

Graph 5a: Percentage of collections in clinical range on each HoNOS item, New Zealand, Jan - Dec 2019



Notes: Percentage of service users in the clinical range (2, 3 or 4) for each HoNOS item. Community discharge does not include discharge to an inpatient unit.

Interpretation: The longer the bar, the more prevalent the difficulty measured by the item is amongst service users. A greater decrease in the length of the bar from admission to discharge suggests a better outcome for the difficulty measured by the item. Items that show medium to high frequency and less change may suggest possible targets for service improvement.

Target: A greater decrease from admission to discharge and smaller percentage in clinical range at discharge.

Table 5a: Percentage of collections in clinical range on each HoNOS item (admission and discharge collections) by team, New Zealand, Jan - Dec 2019

Community services

First 6 HoNOS items														
Team type	N		AGR		SH		AOD		COG		PHY		DelHal	
	Adm	Disch	Adm	Disch	Adm	Disch	Adm	Disch	Adm	Disch	Adm	Disch	Adm	Disch
Alcohol and drug team	522	268	14%	7%	13%	4%	86%	52%	8%	2%	23%	10%	3%	1%
Child and youth team	64	74	22%	8%	39%	15%	21%	15%	14%	9%	17%	12%	13%	12%
Community team	12,183	6,960	17%	6%	22%	5%	26%	16%	12%	5%	21%	16%	18%	6%
Early intervention team	332	124	15%	7%	10%	2%	29%	19%	21%	3%	10%	6%	51%	14%
Eating disorders team	305	179	6%	3%	11%	3%	11%	7%	17%	3%	40%	20%	10%	5%
Forensic team	87	112	13%	2%	6%	2%	46%	8%	9%	1%	10%	9%	11%	2%
Kaupapa Māori team	586	329	20%	11%	16%	4%	38%	25%	15%	7%	16%	10%	23%	11%
Maternal mental health team	1,013	938	13%	2%	7%	2%	3%	2%	4%	1%	21%	9%	2%	0%
Older people team	75	42	20%	7%	1%	0%	8%	0%	59%	57%	39%	48%	17%	14%
Pacific people team	147	76	9%	0%	5%	1%	14%	8%	14%	1%	16%	11%	21%	8%
Specialty team	51	0	18%	0%	37%	0%	22%	0%	20%	0%	33%	0%	6%	0%
Total	15,384	9,127	16%	6%	20%	4%	27%	15%	12%	5%	21%	15%	17%	6%

Second 6 HoNOS items												
Team type	DEP		OTH		REL		ADL		LIV		OCC	
	Adm	Disch	Adm	Disch	Adm	Disch	Adm	Disch	Adm	Disch	Adm	Disch
Alcohol and drug team	34%	9%	50%	17%	46%	22%	16%	8%	14%	7%	23%	12%
Child and youth team	53%	34%	72%	55%	48%	38%	25%	16%	9%	1%	11%	10%
Community team	54%	20%	69%	37%	42%	22%	19%	8%	12%	6%	21%	10%
Early intervention team	35%	10%	60%	38%	39%	30%	24%	10%	13%	4%	19%	11%
Eating disorders team	61%	21%	98%	62%	39%	20%	36%	9%	9%	4%	20%	9%
Forensic team	14%	2%	23%	1%	21%	2%	10%	1%	68%	38%	72%	40%
Kaupapa Māori team	46%	26%	65%	34%	50%	28%	16%	7%	17%	9%	21%	11%
Maternal mental health team	68%	16%	82%	33%	35%	15%	17%	4%	8%	2%	14%	2%
Older people team	24%	7%	35%	15%	24%	19%	51%	48%	11%	5%	14%	5%
Pacific people team	34%	1%	43%	12%	35%	11%	15%	1%	13%	3%	10%	1%
Specialty team	41%	0%	61%	0%	39%	0%	24%	0%	20%	0%	29%	0%
Total	53%	19%	69%	36%	42%	22%	20%	7%	12%	6%	20%	10%

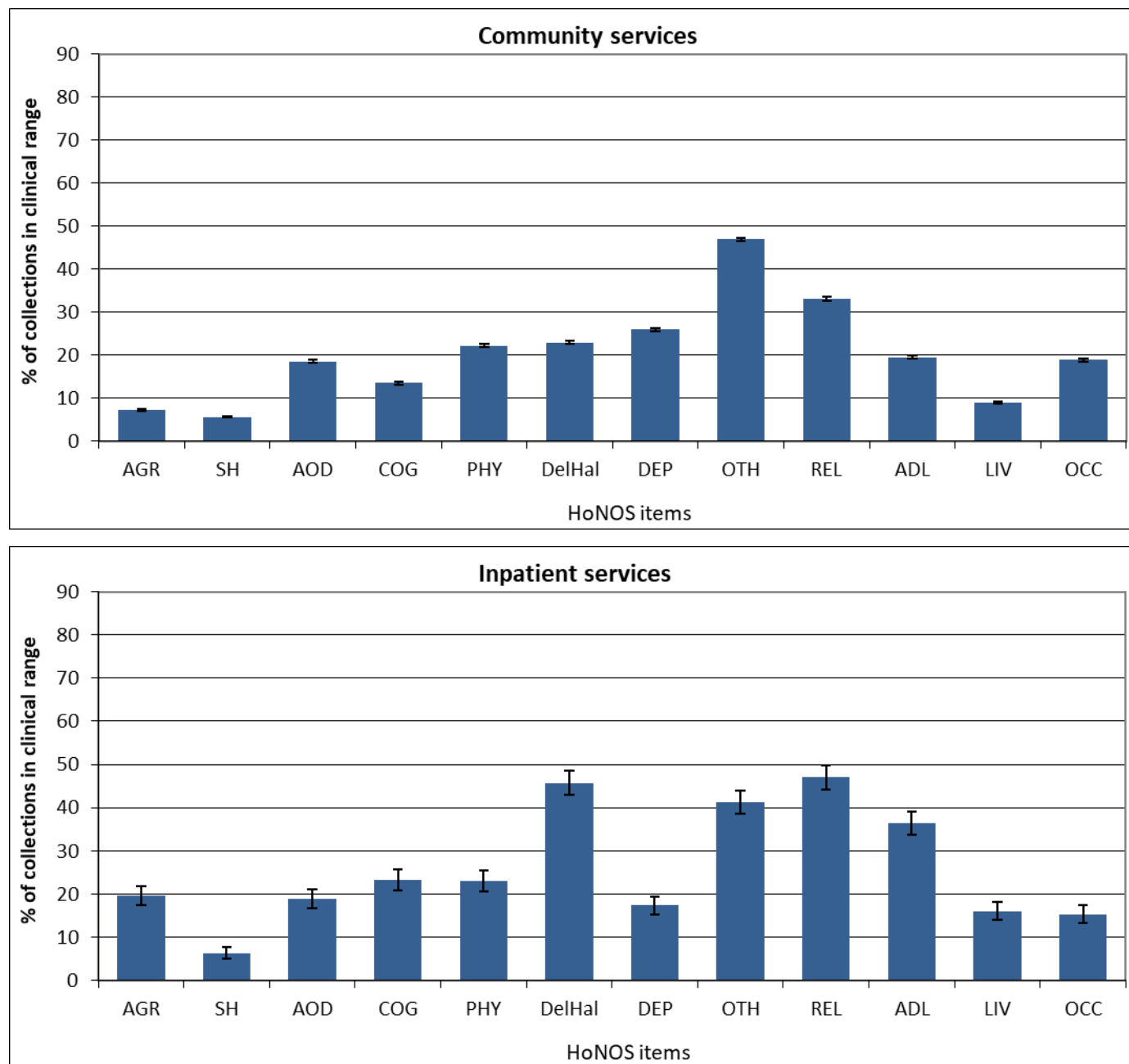
Inpatient services

First 6 HoNOS items														
Team type	N		AGR		SH		AOD		COG		PHY		DelHal	
	Adm	Disch	Adm	Disch	Adm	Disch	Adm	Disch	Adm	Disch	Adm	Disch	Adm	Disch
Alcohol and drug team	258	243	7%	12%	2%	2%	100%	99%	4%	7%	32%	28%	2%	1%
Eating disorders team	23	20	4%	5%	22%	30%	17%	15%	13%	0%	35%	25%	4%	0%
Forensic team	31	34	48%	0%	10%	0%	37%	6%	17%	6%	13%	3%	45%	18%
Inpatient team	9,091	8,771	43%	11%	34%	10%	44%	25%	22%	9%	20%	12%	52%	19%
Maternal mental health team	95	70	22%	16%	27%	10%	11%	6%	11%	3%	16%	10%	18%	6%
Older people team	33	28	33%	11%	19%	0%	13%	0%	55%	39%	52%	39%	27%	18%
Specialty team		34		9%		38%		6%		0%		3%		9%
Total	9,552	9,202	42%	11%	33%	10%	45%	27%	21%	9%	20%	13%	50%	19%

Second 6 HoNOS items												
Team type	DEP		OTH		REL		ADL		LIV		OCC	
	Adm	Disch	Adm	Disch	Adm	Disch	Adm	Disch	Adm	Disch	Adm	Disch
Alcohol and drug team	46%	27%	23%	14%	12%	6%	8%	2%	19%	6%	17%	3%
Eating disorders team	70%	60%	91%	80%	26%	30%	22%	15%	4%	0%	13%	0%
Forensic team	30%	0%	52%	24%	48%	18%	32%	15%	21%	6%	32%	3%
Inpatient team	48%	21%	68%	29%	54%	30%	31%	12%	23%	11%	25%	13%
Maternal mental health team	82%	50%	76%	72%	43%	37%	34%	14%	12%	7%	12%	6%
Older people team	38%	7%	42%	32%	58%	39%	42%	50%	31%	14%	26%	5%
Specialty team		38%		82%		50%		26%		15%		21%
Total	49%	21%	67%	30%	53%	30%	30%	12%	23%	11%	25%	13%

Notes: Percentage of service users in the clinical range (2, 3 or 4) for each HoNOS item. Community discharge does not include discharge to an inpatient unit. **Interpretation:** The higher the percentage, the more prevalent the difficulty measured by the item is amongst service users. A greater decrease between admission to discharge suggests a better outcome for the difficulty measured by the item. Items that show medium to high frequency and less change may suggest possible targets for service improvement. **Target:** A greater decrease from admission to discharge and smaller percentage in clinical range at discharge.

Graph 5b: Percentage of collections in clinical range on each HoNOS item (review collections), New Zealand, Jan - Dec 2019



Notes: Percentage of service users in the clinical range (2, 3 or 4) for each HoNOS item on review collections. Due to most admission being less than 91 days, the data set for review collections in inpatient settings is relatively small.

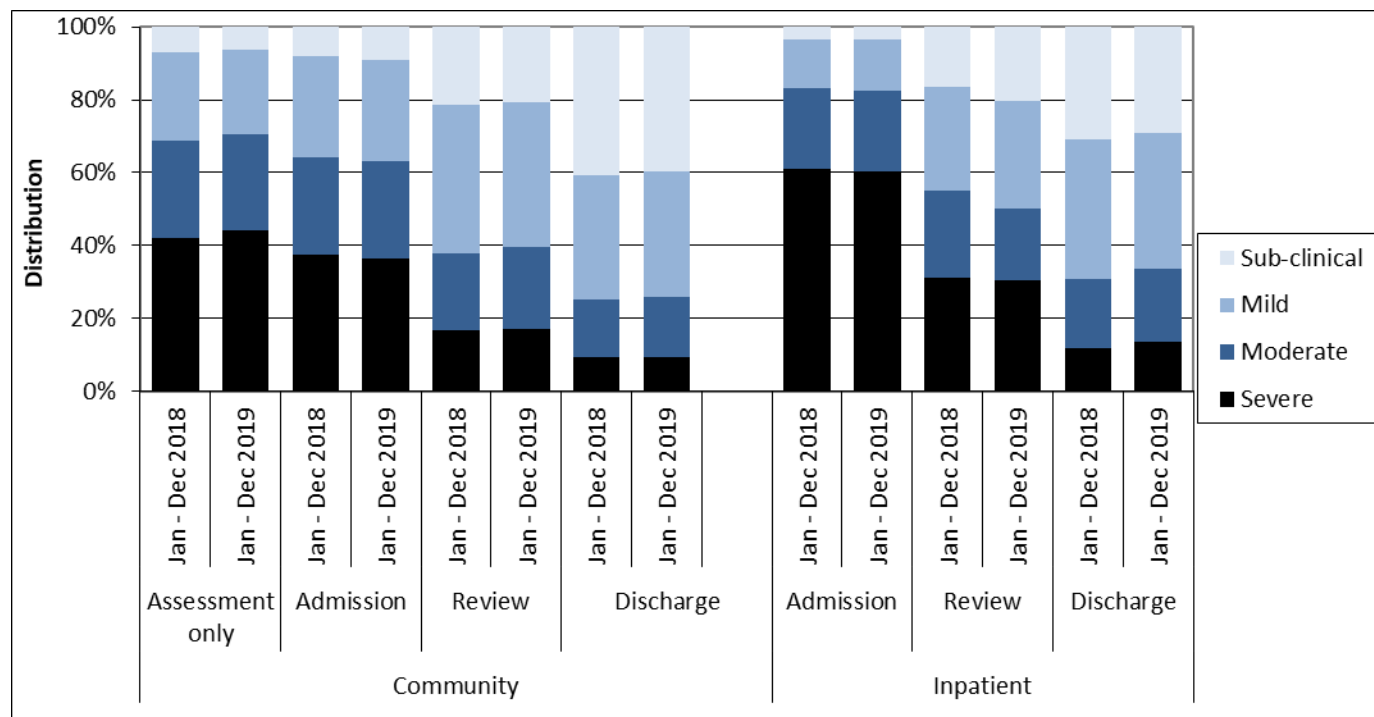
Interpretation: The longer the bar, the more prevalent the difficulty measured by the item is amongst service users.

Table 5b: Percentage of collections in clinical range on each HoNOS item (review collections) by team, New Zealand, Jan - Dec 2019

Team type	N	AGR	SH	AOD	COG	PHY	DelHal	DEP	OTH	REL	ADL	LIV	OCC
Community services													
Alcohol and drug team	599	7%	5%	70%	7%	20%	2%	20%	30%	24%	7%	5%	9%
Child and youth team	209	12%	15%	23%	16%	17%	17%	44%	62%	45%	25%	8%	23%
Co-existing problem team	29	3%	14%	41%	10%	31%	10%	34%	38%	24%	17%	14%	24%
Community team	35,749	7%	6%	17%	14%	23%	24%	26%	47%	34%	20%	9%	20%
Early intervention team	1,306	9%	4%	25%	17%	9%	31%	20%	51%	34%	21%	9%	16%
Eating disorders team	297	4%	9%	7%	8%	37%	7%	44%	94%	30%	25%	6%	12%
Forensic team	126	3%	0%	9%	1%	19%	18%	3%	17%	17%	10%	36%	52%
Kaupapa Māori team	3,385	10%	7%	29%	14%	22%	27%	27%	46%	34%	18%	13%	21%
Maternal mental health team	1,249	8%	3%	3%	5%	16%	1%	48%	70%	33%	11%	6%	10%
Needs assessment and service coordination team	113	4%	2%	21%	30%	22%	32%	8%	31%	31%	32%	7%	25%
Older people team	115	17%	4%	4%	58%	36%	21%	14%	23%	37%	57%	4%	12%
Pacific people team	1,125	2%	1%	12%	5%	14%	20%	11%	18%	16%	11%	5%	10%
Specialty team	29	10%	7%	10%	45%	45%	0%	45%	62%	55%	48%	10%	24%
Total	44,344	7%	6%	19%	14%	22%	23%	26%	47%	33%	20%	9%	19%
Inpatient services													
Forensic team	75	21%	4%	11%	37%	28%	55%	16%	60%	60%	51%	7%	15%
Inpatient team	1,121	20%	6%	20%	23%	23%	45%	17%	40%	46%	36%	17%	16%
Total	1,223	20%	6%	19%	23%	23%	46%	17%	41%	47%	36%	16%	15%

Notes: Percentage of service users in the clinical range (2, 3 or 4) for each HoNOS item on review collections. Due to most admission being less than 91 days, the data set for review collections in inpatient settings is relatively small. **Interpretation:** The higher the percentage, the more prevalent the difficulty measured by the item is amongst service users.

Graph 6: Index of Severity ratings for HoNOS by collection type, New Zealand, Jan - Dec 2018 and Jan - Dec 2019



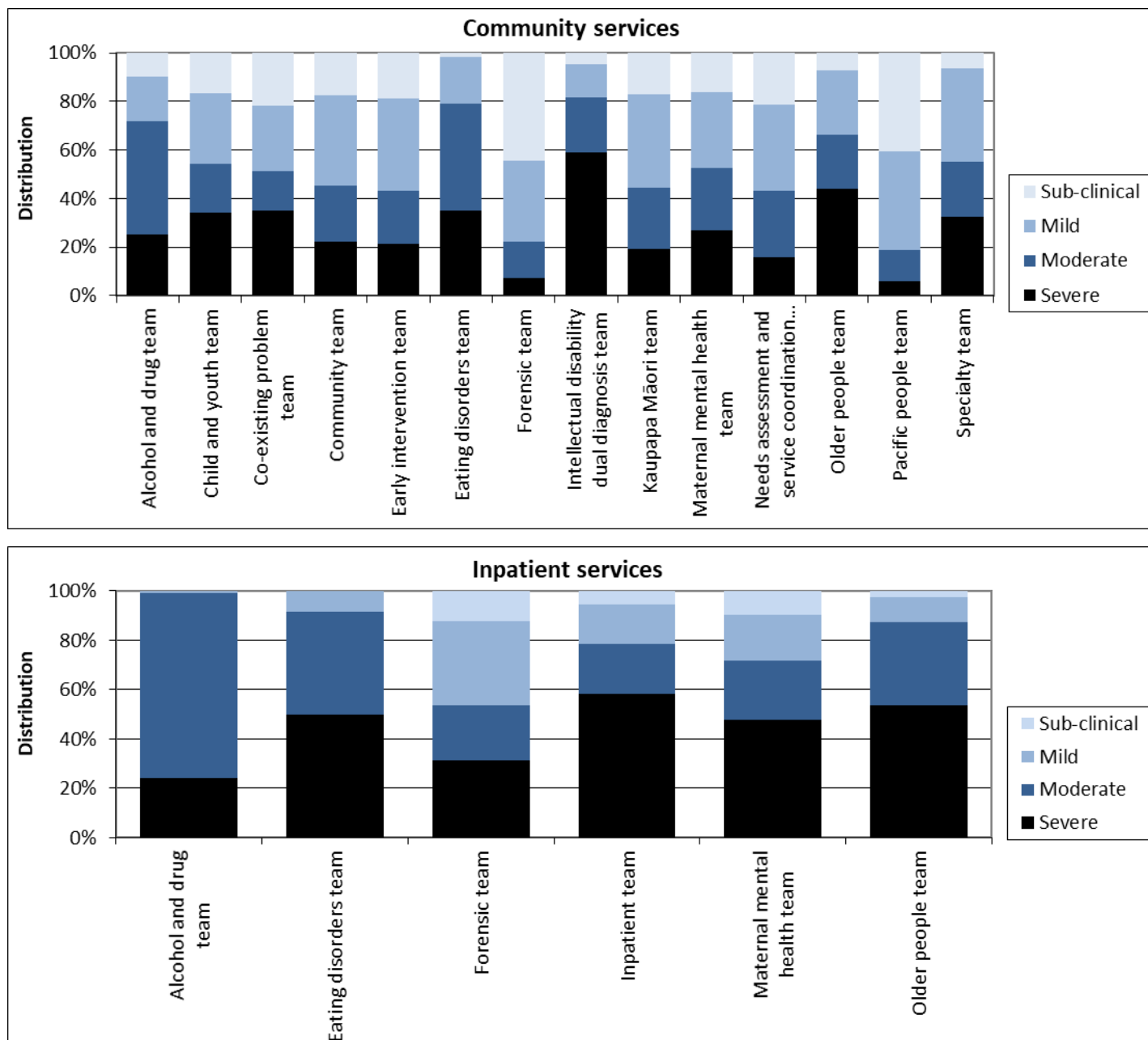
Notes: Index of Severity: Sub clinical = all items <2, mild = at least one item >1 and all items <3, moderate = at least one item >=3, severe = at least 2 items >=3 using first 10 items. Community discharge does not include discharge to an inpatient unit.

Interpretation: Darker bars indicate higher overall level of severity. More positive outcome shown by larger decrease in darker sections of bar between admission and discharge.

2. Other measures of service activity

This section presents other information related to data collected in PRIMHD that may be helpful for understanding how teams are operating. This includes information relevant to caseload intensity and team activity.

Graph 7: Index of Severity for HoNOS (admission and review collections) by team, New Zealand, Jan - Dec 2019



Notes: Only data related to collection at admission and review is included so that results reflect the severity of service users during their engagement with the service. Index of Severity: Sub clinical = all items <2, mild = at least one item >1 and all items <3, moderate = at least one item >=3, severe = at least 2 items >=3 using first 10 items.

Interpretation: This graph gives an impression of the overall severity of the caseload for different teams at admission. The longer the darker bar, the higher the overall severity of the team's caseload.

Table 7: Index of Severity for HoNOS by collection type and team, New Zealand, Jan - Dec 2019

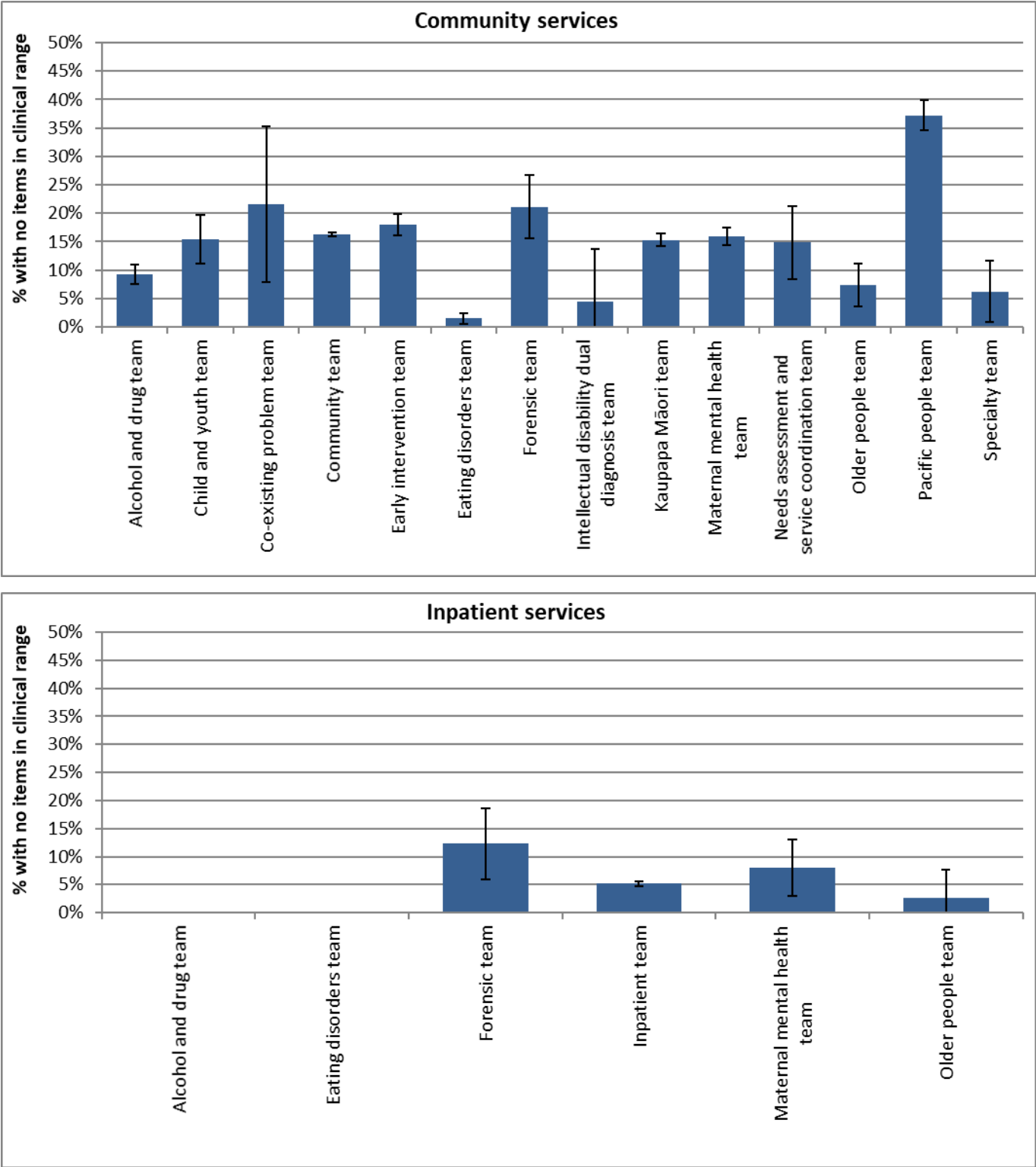
Team type	Assessment only					Admission					Review					Discharge				
	Sub	Mild	Mod	Sev	N	Sub	Mild	Mod	Sev	N	Sub	Mild	Mod	Sev	N	Sub	Mild	Mod	Sev	N
Community services																				
Alcohol and drug team	12%	21%	31%	36%	304	5%	15%	44%	36%	522	14%	22%	49%	16%	599	35%	31%	23%	11%	268
Child and youth team	5%	30%	30%	36%	44	9%	27%	22%	42%	64	19%	30%	20%	32%	209	19%	51%	14%	16%	74
Co-existing problem team											24%	31%	14%	31%	29					
Community team	5%	23%	27%	45%	11,312	9%	28%	26%	37%	12,193	20%	41%	22%	17%	35,780	38%	35%	18%	10%	6,969
Early intervention team						8%	37%	24%	31%	332	22%	38%	21%	19%	1,306	38%	37%	18%	7%	124
Eating disorders team	4%	18%	21%	57%	28	0%	9%	50%	41%	305	3%	30%	38%	30%	297	31%	32%	23%	13%	179
Forensic team	42%	37%	18%	3%	65	29%	33%	23%	15%	87	56%	33%	10%	2%	126	79%	17%	3%	2%	112
Kaupapa Māori team	6%	24%	24%	46%	497	9%	31%	27%	33%	586	19%	40%	25%	17%	3,386	35%	37%	16%	13%	329
Maternal mental health team	28%	42%	15%	15%	156	10%	26%	28%	36%	1,013	21%	35%	24%	20%	1,249	55%	32%	8%	4%	938
Needs assessment and service coordination team											22%	36%	27%	14%	113					
Older people team	7%	27%	10%	57%	30	4%	21%	29%	45%	75	10%	30%	17%	43%	115	14%	29%	24%	33%	42
Pacific people team						26%	39%	18%	17%	147	42%	41%	12%	5%	1,125	62%	29%	7%	3%	76
Specialty team	7%	13%	18%	62%	104	4%	43%	24%	29%	51	10%	31%	21%	38%	29					
Total	6%	23%	26%	44%	12,579	9%	28%	27%	36%	15,402	21%	40%	22%	17%	44,381	40%	34%	17%	9%	9,140

Team type	Assessment only					Admission					Review					Discharge				
	Sub	Mild	Mod	Sev	N	Sub	Mild	Mod	Sev	N	Sub	Mild	Mod	Sev	N	Sub	Mild	Mod	Sev	N
Inpatient services																				
Alcohol and drug team						0%	1%	75%	24%	258						1%	0%	79%	20%	243
Eating disorders team						0%	4%	43%	52%	23						10%	40%	20%	30%	20
Forensic team						16%	29%	19%	35%	31	11%	36%	24%	29%	75	59%	35%	0%	6%	34
Inpatient team						4%	14%	20%	62%	9,114	21%	29%	19%	31%	1,121	30%	38%	18%	13%	8,773
Maternal mental health team						5%	17%	26%	52%	95						19%	40%	19%	23%	70
Older people team						3%	9%	27%	61%	33						25%	25%	11%	39%	28
Specialty team																3%	47%	24%	26%	34
Total						3%	14%	22%	60%	9,576	20%	30%	20%	30%	1,223	29%	37%	20%	14%	9,204

Notes: Sub = sub clinical, Mild = mild, Mod = moderate, Sev = severe on Index of Severity. Only admission collection data is included so that results reflect the severity of service users during their engagement with the service. Index of Severity: Sub clinical = all items <2, mild = at least one item >1 and all items <3, moderate = at least one item >=3, severe = at least 2 items >=3 using first 10 items. Community discharge does not include discharge to an inpatient unit.

Interpretation: Larger percentages in the columns to the right for each type of collection, the higher the overall severity of the team's caseload.

Graph 8: Collections with no HoNOS items in clinical range, New Zealand, Jan - Dec 2019



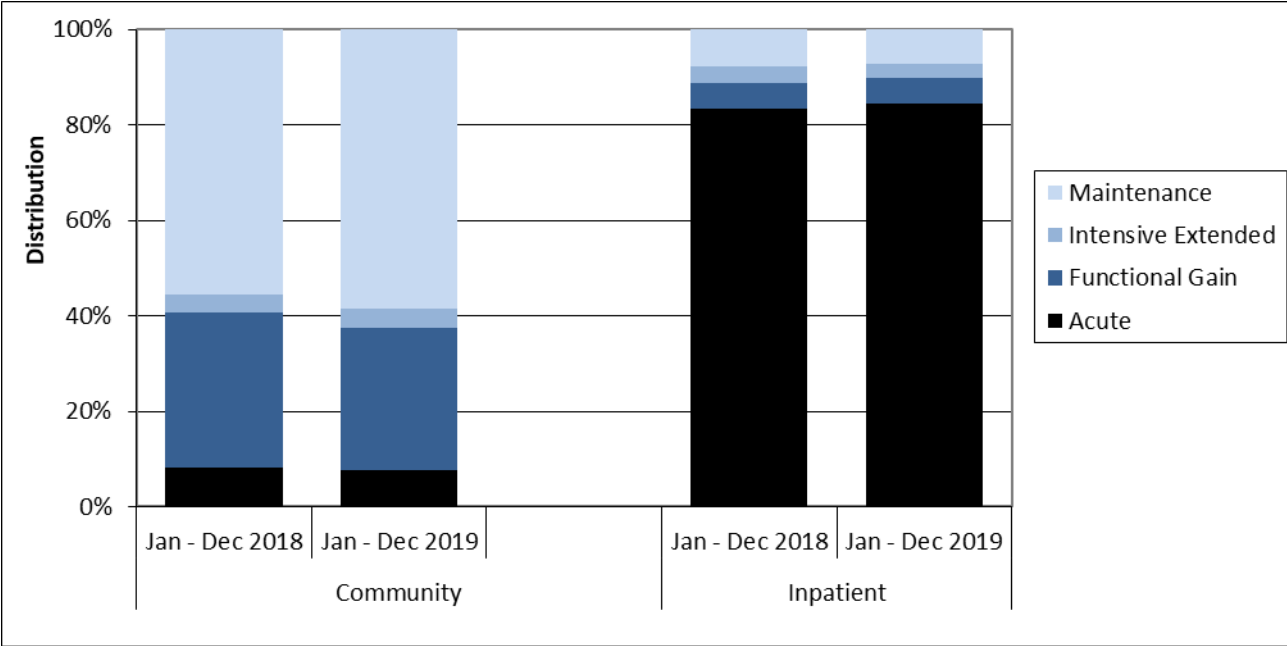
Notes: Includes admission and review collections. Shows percentage of service users with all HoNOS items less than two, ie no HoNOS items in the clinical range. **Interpretation:** There are a variety of reasons that may make it appropriate for service users to remain in the service even though they show no HoNOS items in the clinical range. However, teams showing a larger or substantial percentage of service users with no HoNOS items in the clinical range could benefit from reviewing these cases to ensure that the service remains appropriate for this service user.

Table 8: Collections with no HoNOS items in clinical range, New Zealand, Jan - Dec 2019

Team type	Number of collections with no items in clinical range	Percentage with no items in clinical range
Community services		
Alcohol and drug team	104	9%
Child and youth team	42	15%
Co-existing problem team	8	22%
Community team	7,846	16%
Early intervention team	294	18%
Eating disorders team	9	1%
Forensic team	45	21%
Intellectual disability dual diagnosis team	1	5%
Kaupapa Māori team	609	15%
Maternal mental health team	361	16%
Needs assessment and service coordination team	18	15%
Older people team	14	7%
Pacific people team	473	37%
Specialty team	5	6%
Total	9,829	16%
Inpatient services		
Alcohol and drug team	0	0%
Eating disorders team	0	0%
Forensic team	13	12%
Inpatient team	527	5%
Maternal mental health team	9	8%
Older people team	1	3%
Total	550	5%

Notes: For further information see notes for Graph 8.

Graph 9: Focus of care categories, New Zealand, Jan - Dec 2018 and Jan - Dec 2019



Notes: Data from review and discharge collections.

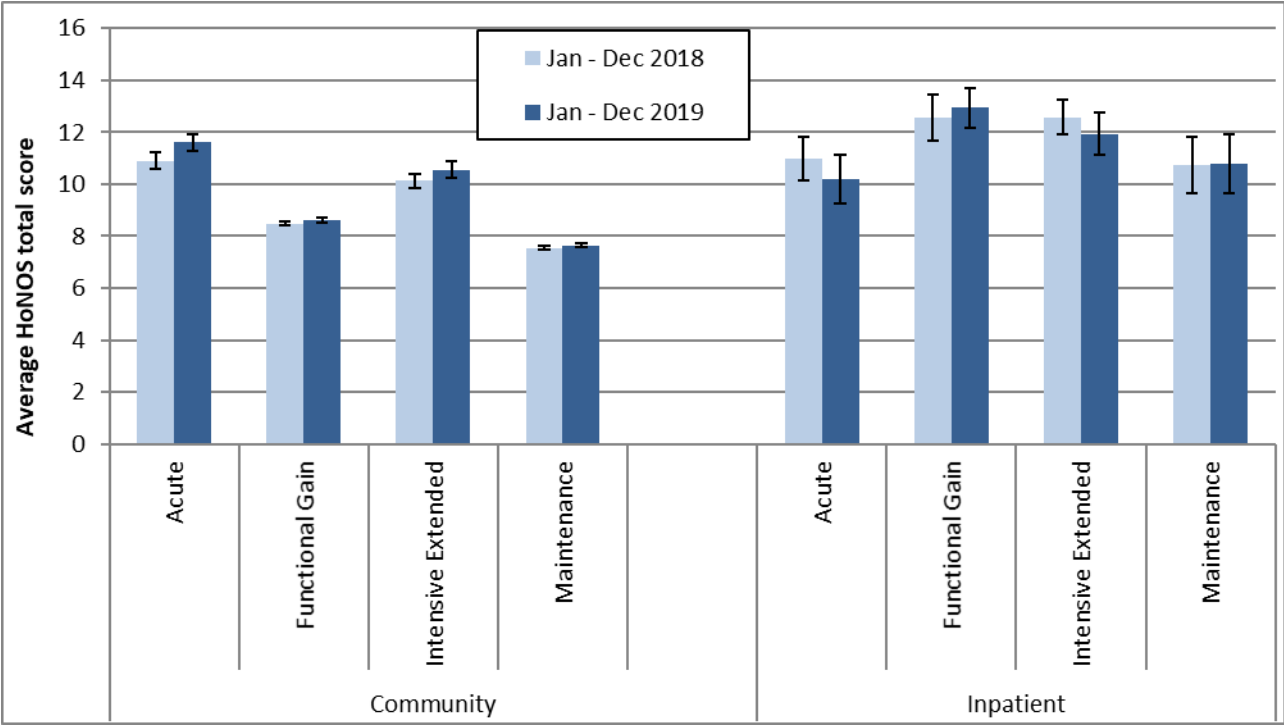
Interpretation: Darker bars indicate more intensive involvement in care, so a longer or darker bar in general suggests more intensive working. A longer functional gain bar and shorter maintenance bar potentially suggests more recovery focused ways of working.

Table 9: Focus of care categories by team, New Zealand, Jan - Dec 2018 and Jan - Dec 2019

Team type	Acute		Functional gain		Intensive extended		Maintenance		Number of collections	
	Last period	This period	Last period	This period	Last period	This period	Last period	This period	Last period	This period
Community services										
Alcohol and drug team	7%	6%	40%	43%	1%	1%	52%	49%	1,128	878
Child and youth team	3%	4%	29%	41%	7%	7%	61%	48%	310	267
Co-existing problem team	26%	15%	15%	9%	4%	0%	54%	76%	46	33
Community team	9%	8%	32%	29%	4%	4%	56%	59%	42,847	39,832
Early intervention team	5%	5%	46%	51%	3%	3%	46%	41%	1,257	1,358
Eating disorders team	7%	9%	64%	63%	15%	11%	14%	18%	502	515
Forensic team	6%	3%	6%	3%	0%	4%	88%	90%	216	143
Intellectual disability dual diagnosis team	4%		0%		0%		96%		25	
Kaupapa Māori team	8%	9%	22%	15%	2%	3%	68%	74%	3,295	3,423
Maternal mental health team	10%	8%	51%	58%	2%	2%	37%	32%	2,387	2,056
Needs assessment and service coordination team	9%	4%	29%	19%	6%	6%	57%	71%	125	117
Older people team	14%	6%	13%	9%	2%	2%	71%	82%	107	95
Pacific people team	1%	1%	18%	11%	0%	0%	81%	88%	948	1,102
Specialty team	7%	22%	30%	17%	18%	7%	45%	54%	144	46
Total	8%	8%	32%	30%	4%	4%	56%	58%	53,356	49,889
Inpatient services										
Alcohol and drug team	100%	100%	0%	0%	0%	0%	0%	0%	228	233
Eating disorders team		80%		20%		0%		0%		20
Forensic team	13%	15%	8%	8%	48%	66%	31%	11%	112	99
Inpatient team	84%	85%	6%	6%	3%	2%	8%	7%	8,744	8,511
Maternal mental health team	88%	82%	2%	7%	0%	0%	10%	11%	49	83
Older people team	81%		0%		0%		19%		21	
Total	83%	84%	5%	5%	4%	3%	8%	7%	9,183	8,990

Notes: For further information see notes for Graph 9.

Graph 10: HoNOS total score (review collections) by focus of care, New Zealand, Jan - Dec 2018 and Jan - Dec 2019



Notes: This data is just for review collections.

Interpretation: Points are significantly different if error bars don't overlap. A general downward trend in scores from acute to maintenance focus of care might be expected.

Table 10: HoNOS total score (review collections) by focus of care by team, New Zealand, Jan - Dec 2019

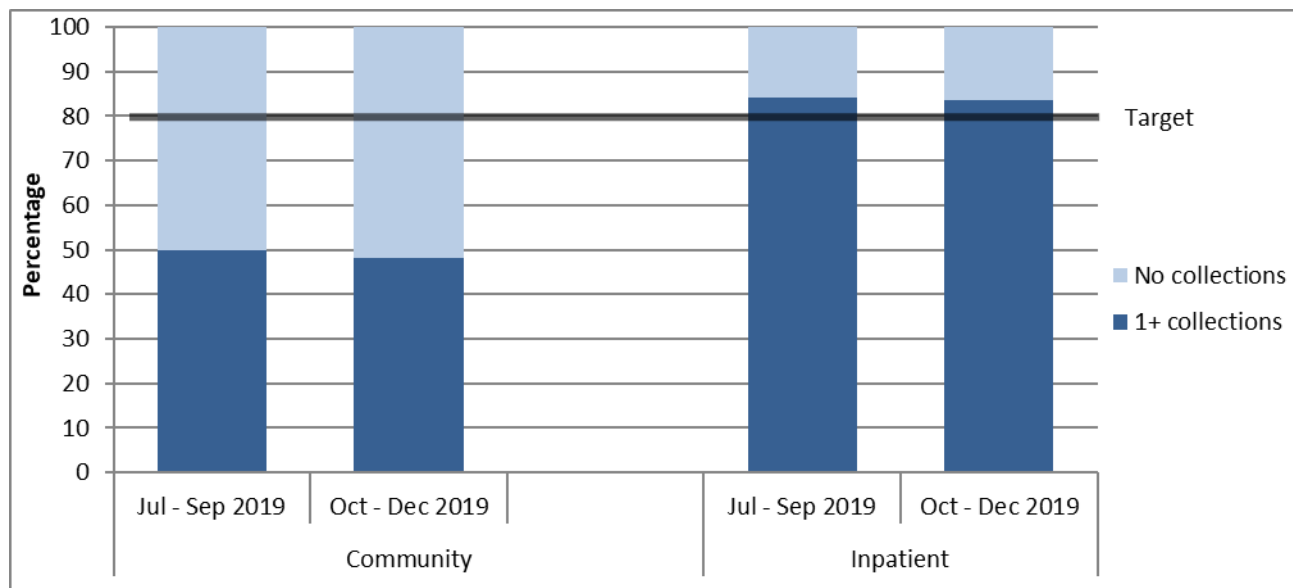
Team type	Acute			Functional gain			Intensive extended			Maintenance		
	N	Mean	CI	N	Mean	CI	N	Mean	CI	N	Mean	CI
Community services												
Alcohol and drug team	30	11.7	9.9-13.6	146	8.3	7.5-9.1				396	5.6	5.3-6.0
Child and youth team				82	9.8	8.5-11.1				91	9.5	8.1-11.0
Co-existing problem team										22	8.5	6.0-11.1
Community team	1,014	11.5	11.1-11.8	8,886	8.7	8.6-8.8	1,464	10.5	10.2-10.9	20,177	7.8	7.7-7.9
Early intervention team	34	14.5	11.7-17.3	579	8.3	7.8-8.7	34	11.1	8.8-13.4	463	7.7	7.1-8.3
Eating disorders team				165	9.5	8.5-10.4	33	10.3	8.6-12.0	65	7.7	6.4-9.0
Forensic team										108	6.6	5.6-7.5
Kaupapa Māori team	185	12.7	12.0-13.4	415	9.8	9.2-10.4	85	10.8	9.3-12.2	2,295	8.0	7.7-8.2
Maternal mental health team	69	7.8	6.7-8.9	705	7.6	7.2-8.0	20	6.9	4.8-8.9	360	5.6	5.2-6.0
Needs assessment and service coordination team										76	7.4	6.3-8.4
Older people team										56	8.7	7.2-10.1
Pacific people team				93	5.8	5.0-6.7				904	4.6	4.4-4.9
Total	1,364	11.6	11.3-11.9	11,103	8.6	8.5-8.7	1,674	10.6	10.2-10.9	25,043	7.6	7.6-7.7
Inpatient services												
Forensic team							62	12.6	11.4-13.9			
Inpatient team	265	10.2	9.3-11.2	222	13.2	12.4-13.9	137	11.6	10.6-12.7	117	11.3	10.1-12.4
Total	284	10.2	9.3-11.2	227	12.9	12.2-13.7	199	11.9	11.1-12.7	126	10.8	9.7-11.9

Notes: For further information see notes for Graph 10.

3. Collection completion and validity

This section presents information about the completeness and validity of the data on which the remainder of this report is based. It also shows the current targets for the variables presented.

Graph 11: Percentage of service users with at least one collection during the period, New Zealand, Jul – Sep 2019 and Oct – Dec 2019 (18 to 64 years)

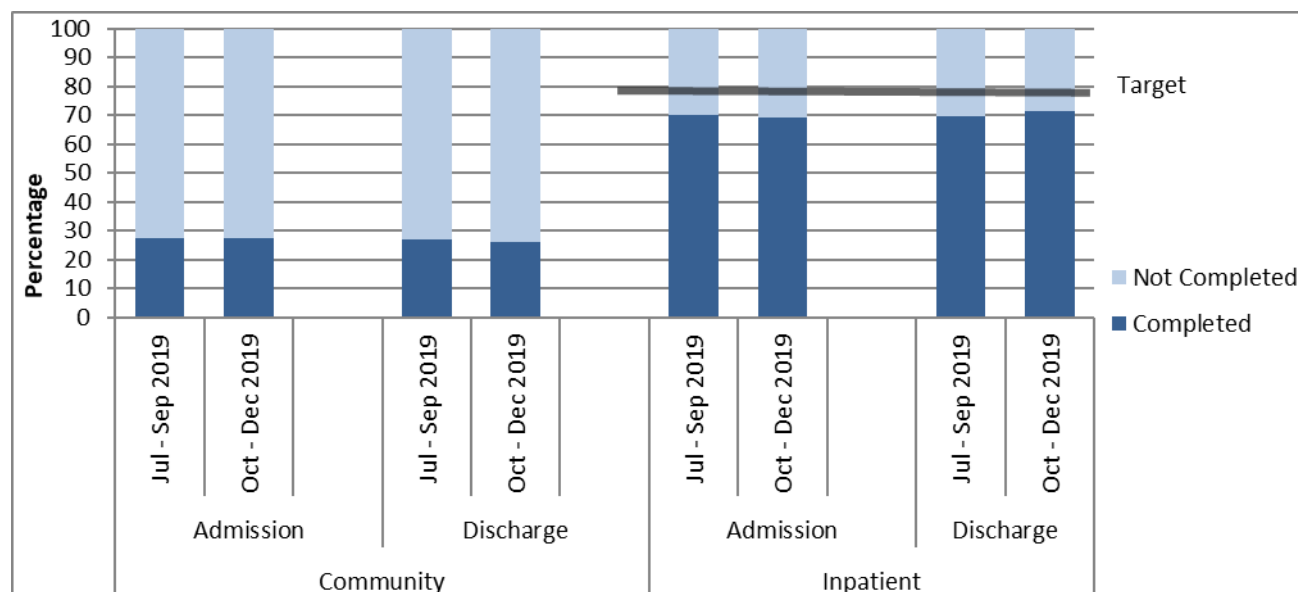


Notes: Community compliance is affected by crisis teams completing triage or brief assessment type activity which is not a comprehensive assessment.

Interpretation: The longer the dark part of the bar, the more completely the data set includes all service users, and the more meaningful and representative the graphs, tables, and analyses using this data will be. The data is approximate due to movements of service users between teams and similar variations; however, it does provide a reasonably accurate representation of completion of measures. The data only includes valid collections.

Target: To meet or exceed the target shown on the graph for the percentage of service users with at least one collection within the period.

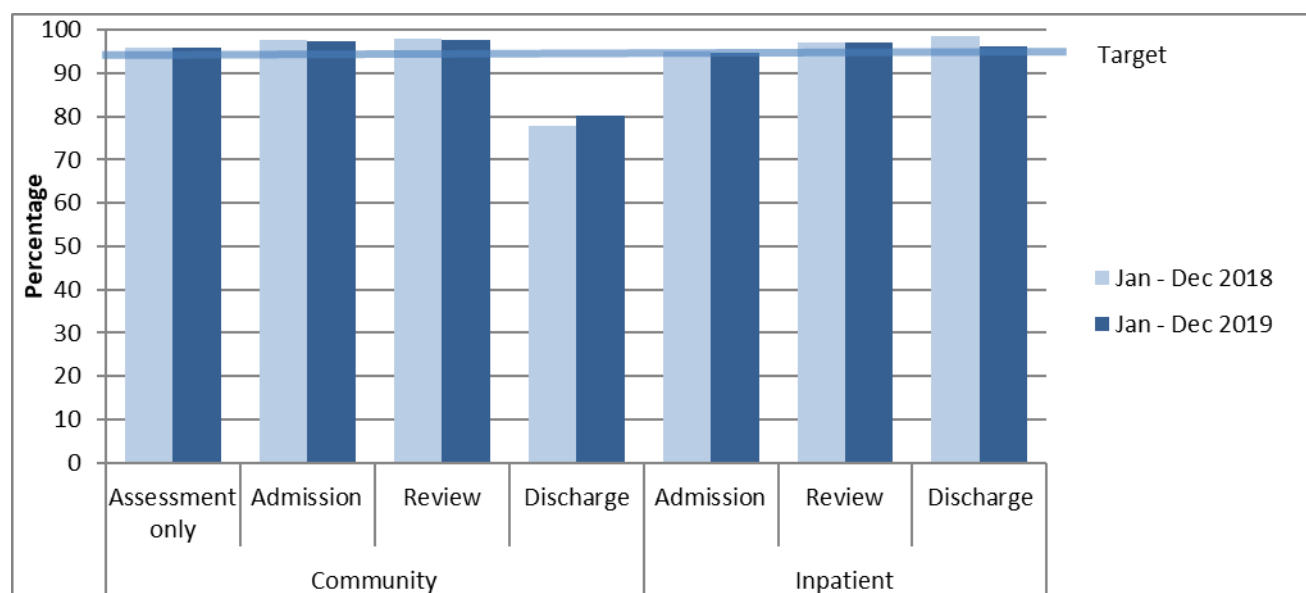
Graph 12: Percentage of service users with admission and discharge collections completed, New Zealand, Apr – Jun 2019 and Jul – Sep 2019 (18 to 64 years)



Notes: Community compliance is affected by crisis teams completing triage or brief assessment type activity which is not a comprehensive assessment.

Interpretation: The longer the dark bar, the larger the percentage of admission and discharge that had the relevant data collection type. Data is approximate due to movements of service users between teams and similar variations; however, it does provide a reasonably accurate representation of completion of measures. The data only includes valid collections.

Graph 13: Percentage of valid collections, HoNOS, New Zealand, Jan – Dec 2018 and Jan – Dec 2019



Notes: Valid = Two or fewer of the 12 items scored as unknown or missing. Discharge exclude collection types for lost to care, discharge dead and brief episode of care. Collection in drug and alcohol teams is not required, therefore AOD data is excluded.

Interpretation: The longer the dark lines, the higher the percentage of valid scores.

Target: Aim for 95% valid collections.

Table 13: Invalid collections by team, by HoNOS item, New Zealand, Jan - Dec 2019

Team type	% Invalid			Number of invalid ratings by HoNOS item												Total number
	Adm	Rev	Dch	1	2	3	4	5	6	7	8	9	10	11	12	
Community services																
Child and youth team	2%	3%	11%	19	20	25	18	21	21	20	19	19	18	22	20	417
Community team	3%	2%	20%	3,609	3,761	4,421	3,861	3,764	3,839	3,883	4,010	3,988	3,920	4,113	4,286	73,529
Early intervention team	4%	1%	20%	102	111	111	110	105	108	108	128	104	106	108	108	2,064
Eating disorders team	1%	1%	7%	23	26	27	26	23	24	29	26	26	26	29	31	916
Forensic team	1%	2%	41%	86	87	96	87	88	91	88	88	91	88	90	92	490
Intellectual disability dual diagnosis team				3	3	3	3	3	3	3	4	3	3	4	3	28
Kaupapa Māori team	3%	2%	19%	188	191	229	187	191	196	198	211	199	202	198	196	5,194
Maternal mental health team	1%	2%	22%	341	346	386	342	348	342	336	341	339	347	350	354	3,855
Needs assessment and service coordination team		0%		1	1	2	1	1	1	1	1	1	1	1	1	140
Older people team	4%	1%	20%	11	17	13	12	12	16	18	30	14	12	13	17	290
Pacific people team	5%	2%	11%	28	31	31	28	35	36	30	34	32	50	45	62	1,454
Specialty team	4%	6%	8%	7	11	11	12	7	10	10	8	52	60	63	67	280
Total	2%	2%	20%	4,418	4,605	5,355	4,687	4,598	4,687	4,724	4,900	4,868	4,833	5,037	5,237	88,672

Team type	% Invalid			Number of invalid ratings by HoNOS item												Total number
	Adm	Rev	Dch	1	2	3	4	5	6	7	8	9	10	11	12	
Inpatient services																
Eating disorders team	0%		0%	0	0	0	0	0	0	0	0	0	0	0	0	44
Forensic team	14%	0%	0%	1	1	2	2	0	3	2	3	2	3	6	4	144
Inpatient team	5%	3%	4%	383	447	800	573	491	512	573	813	740	699	1,042	1,275	19,585
Maternal mental health team	1%		6%	3	7	10	6	6	5	6	9	5	5	7	12	185
Older people team	13%	14%	3%	0	3	2	1	1	2	2	4	2	1	19	22	74
Specialty team			0%	0	0	0	0	0	0	0	0	0	0	0	0	53
Total	5%	3%	4%	387	458	814	582	498	522	583	830	749	708	1,074	1,314	20,091

Notes: Percentage of invalid collections = the percentage of collections that had three or more of the 12 items scored as unknown or missing. Number of invalid ratings by HoNOS item = for each of the HoNOS items, the number of collections for which that item was unknown or missing. Discharge excludes collection types for lost to care, deceased and brief episode of care. Collection in drug and alcohol teams is not required, therefore AOD data is excluded.

Interpretation: The lower the percentage of invalid collections by team, the higher the percentage of valid scores. The lower the number of invalid collections by HoNOS item, the more collections that have valid data on that HoNOS item.

Target: Aim for 95% valid collections (5% invalid collections) or better. Aim for as few invalid items as possible, with all items having a similar validity rate.