



PRIMHD summary report – HoNOS

Health of the Nation Outcomes Scales – working age adults report for New Zealand



Programme for the Integration of Mental Health Data

tepou.co.nz

This report summarises national Programme for the Integration of Mental Health Data (PRIMHD) data submitted by district health boards (DHB). In particular, it presents Health of the National Outcomes Scale for working aged adults (HoNOS) data, from services where HoNOS is the primary measure.

This report is organised into three major sections that provide information about:

- 1. Outcomes related information:** This provides indications about what changes have occurred for service users between entering and leaving the service. Outcome is assessed by comparing the group admitted and the group discharged from the service in the same time period. This should provide a reasonable indication of outcomes achieved unless the service user mix has changed significantly over the usual period for which service is delivered.
- 2. Service related information:** This provides information about the services, such as the overall severity of service users who use different services.
- 3. Collection completion and validity:** This details the completeness of the data set provided by your mental health services. This is important because it indicates how valid and reliable the data sets are likely to be. The less complete the data set, the less valid the information is likely to be.

In many cases the data is presented graphically for New Zealand, and then presented as a table for the individual team types (see team type classification factsheet).

The time period covered differs for the different data presented. See the title or the notes under the graphs or tables for information about the time period covered. Unless otherwise stated, the notes under the graphs also apply to the corresponding table.

For all graphs and tables, if there are less than twenty cases in the data set, then the information is not presented. This is because small samples frequently provide inaccurate and potentially misleading results. See the notes and user guide for other important information about the graphs and tables.

Where appropriate, the statistical **confidence interval** is presented. This is shown by error bars (small lines above and below the average) on the graphs, and a score range in some tables. As a rule of thumb, if the confidence intervals of two data points do not overlap, the two points can be considered to be significantly different. If the confidence intervals of the data points do overlap, we assume the points are not significantly different. It is important to note that statistical significance may not indicate a clinically significant difference.

See the associated user guide for more information about how to understand and use the data presented in this report.

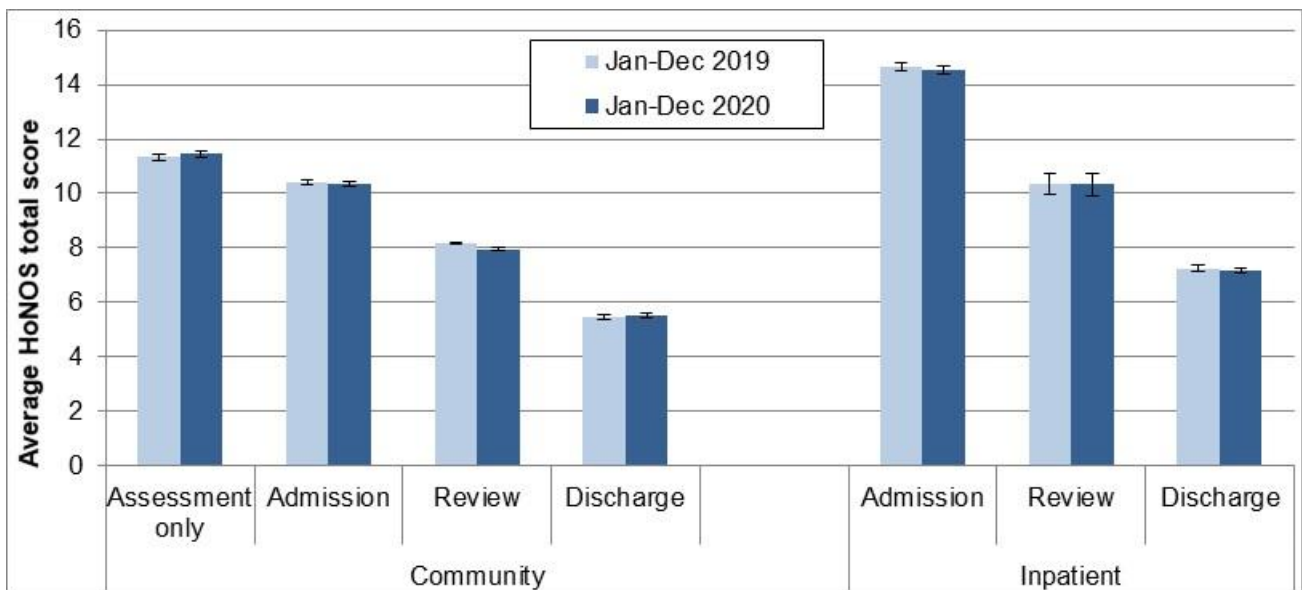
Data for graphs 11 and 12 was extracted 14 April 2021 from PRIMHD by the Ministry of Health and formatted by Te Pou. The data for graphs and tables 1 to 10 and 13 was extracted 29 March 2021 from PRIMHD by the Ministry of Health, then analysed and formatted by Te Pou.

Please note: For this period a few DHBs have incomplete data which will affect New Zealand totals.

1. Outcomes – changes in service user status

This section presents HoNOS data indicating the status of service users at different stages of their contact with DHB mental health services. Graph and Table 1, and Graph 2 show results from HoNOS total scores. Graphs and Tables 3 to 5b show results related to the percentage of HoNOS items in the clinical range. Table 6 shows results from the Index of Severity derived from HoNOS scores.

Graph 1: Average HoNOS total score (12 items) by collection type: New Zealand, Jan - Dec 2019 and Jan - Dec 2020



Notes: Error bars indicate the confidence intervals around the data point. If error bars overlap, the data points are not significantly different. Community discharge does not include discharge to an inpatient unit.

Interpretation: Decrease between admission and discharge is an indication of the outcomes achieved by the service user and service. The greater the decrease between admission and discharge, and the lower the average HoNOS score at discharge, the more positive the outcome.

Target: A greater decrease from admission to discharge and lower average rating at discharge.

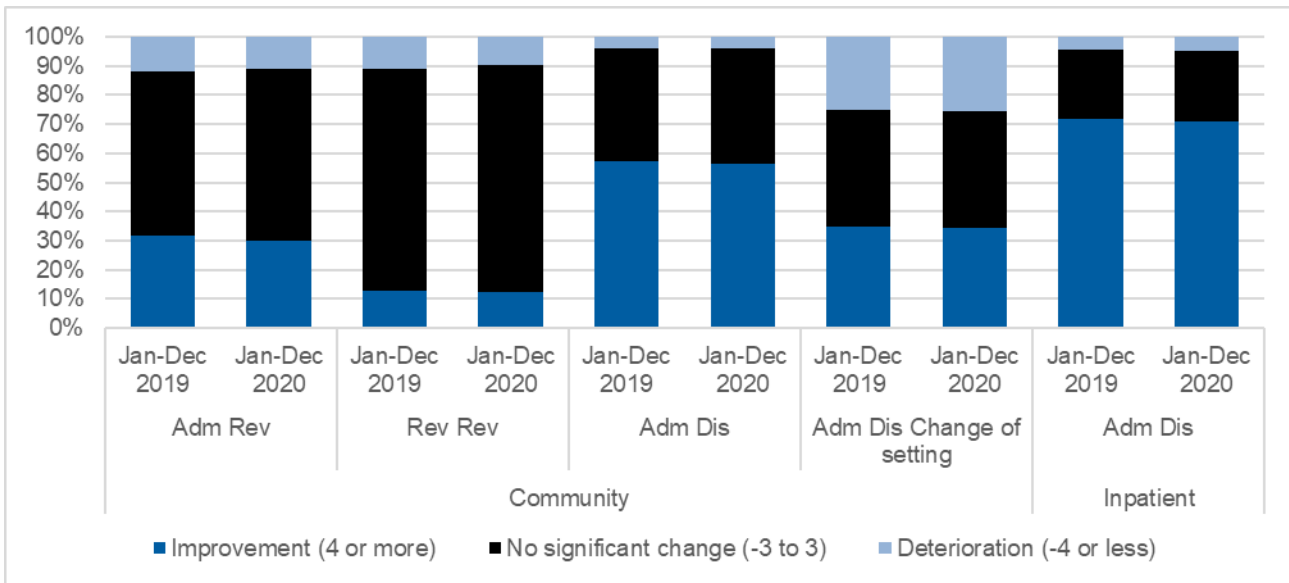
Table 1: Average HoNOS total score (12 items), by collection type and team: New Zealand, Jan - Dec 2020

Team type	Assessment only			Admission			Review			Discharge		
	N	Mean	CI	N	Mean	CI	N	Mean	CI	N	Mean	CI
Community services												
Alcohol and drug team	252	11.1	10.3-11.9	446	10.3	9.8-10.7	776	9.5	9.1-9.9	249	5.6	5.0-6.2
Child and youth team	27	10.7	7.9-13.5	49	11.3	9.5-13.0	184	8.2	7.4-9.1	65	6.6	5.3-7.9
Co-existing problem team							37	8.4	6.7-10.0			
Community team	10,307	11.5	11.4-11.6	10,538	10.5	10.4-10.7	34,259	8.0	7.9-8.0	5,901	5.8	5.7-5.9
Eating disorders team	33	9.0	7.2-10.7	355	10.5	9.8-11.2	1,279	7.9	7.6-8.2	135	4.9	4.1-5.7
Eating disorders team				378	11.4	10.8-12.0	245	9.4	8.7-10.2	178	5.7	4.9-6.5
Forensic team	32	10.3	8.4-12.2	24	8.9	6.6-11.3	82	6.5	5.2-7.7	61	2.9	2.0-3.9
Kaupapa Māori team	252	11.2	10.5-11.8	502	9.9	9.4-10.4	2,869	8.6	8.4-8.8	207	6.1	5.4-6.8
Maternal mental health team	164	7.0	6.2-7.8	1,043	8.7	8.4-8.9	1,213	7.1	6.8-7.4	922	3.7	3.5-3.9
Needs assessment and service coordination team							79	9.2	7.9-10.4			
Older people team	22	11.5	9.0-14.0	59	12.3	10.7-13.9	107	10.4	9.3-11.4	48	8.8	7.5-10.2
Pacific people team				196	6.8	6.1-7.4	1,269	4.5	4.3-4.7	74	2.7	2.0-3.3
Specialty team	163	17.6	16.4-18.8	56	10.4	9.0-11.7						
Total	11,281	11.5	11.3-11.6	13,676	10.3	10.3-10.4	42,440	7.9	7.9-8.0	7,857	5.5	5.4-5.6
Inpatient services												
Alcohol and drug team				225	9.2	8.7-9.8				212	7.6	7.1-8.1
Forensic team							66	14.0	12.7-15.3	27	6.6	3.4-9.7
Inpatient team				8,714	14.7	14.6-14.9	1,042	10.2	9.7-10.6	7,829	7.1	7.0-7.2
Maternal mental health team				96	10.7	9.5-11.9				78	7.5	6.2-8.9
Older people team										22	12.3	8.8-15.8
Specialty team										41	9.1	7.9-10.3
Total				9,107	14.5	14.4-14.7	1,125	10.3	9.9-10.7	8,222	7.2	7.1-7.3

Notes: N = number of collections in period. Average = average HoNOS (12 item) score, CI = confidence interval for average score. Community discharge does not include discharge to an inpatient unit.

Interpretation: If confidence intervals for two scores do not overlap, then the scores have a statistically significant difference. It is important to note that statistical significance may not indicate a clinically significant difference.

Graph 2: Difference in HoNOS total score (12 items) for matched pairs by pair type and setting, New Zealand, Jan - Dec 2019 and Jan - Dec 2020



Notes: Shows the difference of the matched pair between the start and end HoNOS total score. Community admission to discharge includes discharge no further care and discharge other.

Interpretation: The graphs compare two time periods. Dark blue band indicates percentage improvement within the given time period, while black band indicates no significant change and light blue deterioration. Improvement = 4 or more, no significant change = -3 to 3 and deterioration = -4 or less.

Target: A greater percentage increase in improvement for both community and inpatient settings and a smaller percentage in deterioration.

Table 2: Difference in HoNOS total score (12 items) for matched pairs by pair type and team, community New Zealand, Jan - Dec 2020

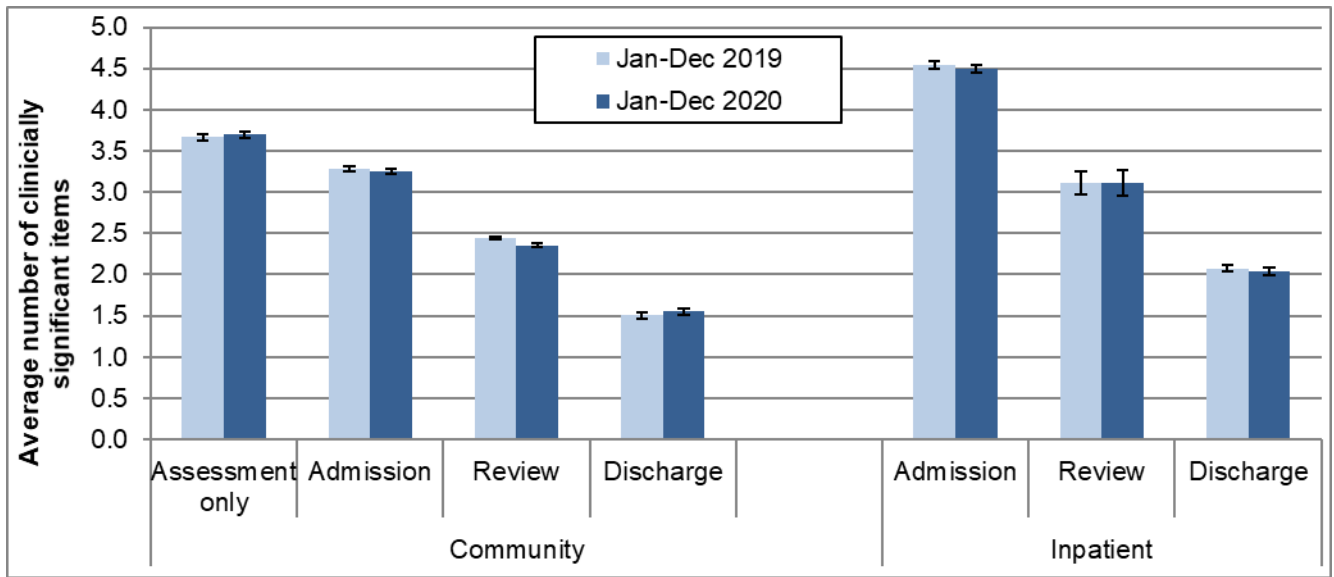
Team Type	Com Adm Rev				Com Rev Rev				Com Adm Dis				Com Adm Dis Change of setting			
	↓ Det	No SC	↑ Imp	N	↓ Det	No SC	↑ Imp	N	↓ Det	No SC	↑ Imp	N	↓ Det	No SC	↑ Imp	N
Alcohol and drug team	15%	54%	31%	71	17%	66%	16%	299	5%	44%	51%	185	22%	50%	28%	32
Child and youth team					12%	76%	12%	68								
Community team	11%	59%	30%	3,069	10%	79%	12%	17,663	4%	39%	56%	3,079	28%	39%	33%	1,890
Early intervention team	11%	49%	40%	153	15%	65%	20%	618	6%	42%	52%	79	23%	43%	34%	134
Eating disorders team	15%	54%	32%	41	13%	75%	12%	52	4%	44%	52%	113	5%	56%	39%	75
Forensic team					11%	74%	16%	38								
Kaupapa Māori team	19%	60%	21%	170	11%	76%	13%	1,596	6%	41%	53%	99	28%	46%	26%	134
Maternal mental health team	5%	63%	32%	296	9%	77%	14%	409	2%	35%	63%	514	7%	38%	55%	117
Needs assessment and service coordination team					4%	96%	0%	53								
Older people team					10%	66%	24%	41	3%	48%	48%	33				
Pacific people team	13%	56%	31%	61	8%	81%	11%	721	5%	38%	58%	40	18%	39%	43%	56
Total	11%	59%	30%	3,898	10%	78%	12%	21,578	4%	39%	56%	4,185	26%	40%	34%	2,462

Notes: Shows the difference of the matched pair between the start and end HoNOS total score. Community admission to discharge includes discharge no further care and discharge other.

Interpretation: Improvement (↑Imp) = 4 or more, no significant change (No SC) = -3 to 3 and deterioration (↓Det) = -4 or less.

Target: A greater percentage increase in improvement for community setting and a smaller percentage in deterioration.

Graph 3: Average number of clinically significant HoNOS items by collection type: New Zealand, Jan - Dec 2019 and Jan - Dec 2020



Notes: Average number clinically significant items = the average number of items in the clinical range (2, 3 or 4) per collection. Community discharge does not include discharge to an inpatient unit.

Interpretation: Points are significantly different if error bars don't overlap. A decrease between admission and discharge is an indication of the outcomes achieved by the service and service user. A greater decrease between admission and discharge indicates a better outcome. A lower admission score could be indication of service users seeking out and being engaged by services at a lower level of severity.

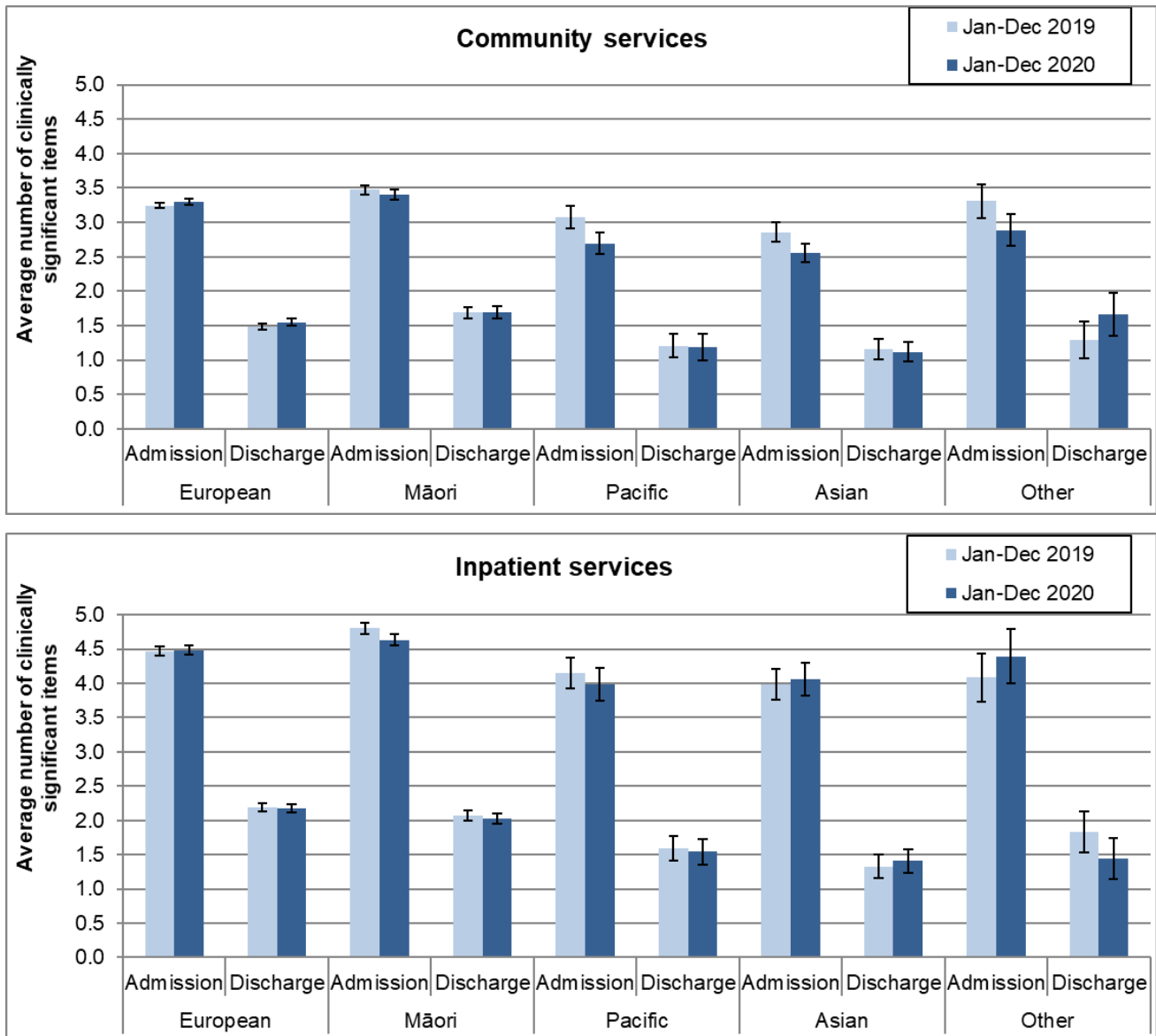
Target: A greater decrease from admission to discharge and smaller percentage in clinical range at discharge

Table 3: Average number of clinically significant HoNOS items by collection type and team: New Zealand, Jan - Dec 2020

Team type	Assessment only			Admission			Review			Discharge		
	N	Mean	CI	N	Mean	CI	N	Mean	CI	N	Mean	CI
Community services												
Alcohol and drug team	252	3.6	3.3-3.8	446	3.1	3.0-3.3	776	2.9	2.8-3.1	249	1.6	1.3-1.8
Child and youth team	27	3.5	2.6-4.3	49	3.8	3.1-4.4	184	2.4	2.0-2.7	65	2.0	1.5-2.5
Co-existing problem team							37	2.4	1.7-3.1			
Community team	10,307	3.7	3.7-3.8	10,538	3.3	3.3-3.4	34,259	2.4	2.4-2.4	5,901	1.6	1.6-1.7
Early intervention team	33	3.0	2.3-3.7	355	3.3	3.1-3.6	1,279	2.4	2.3-2.5	135	1.4	1.1-1.7
Eating disorders team				378	3.4	3.2-3.6	245	2.9	2.6-3.1	178	1.8	1.5-2.0
Forensic team	32	2.6	1.9-3.3	24	2.5	1.8-3.3	82	1.8	1.3-2.2	61	0.6	0.3-0.8
Kaupapa Māori team	252	3.6	3.3-3.9	502	3.0	2.8-3.2	2,869	2.5	2.4-2.6	207	1.6	1.3-1.9
Maternal mental health team	164	2.1	1.9-2.4	1,043	2.7	2.6-2.8	1,213	2.2	2.1-2.3	922	1.0	0.9-1.1
Needs assessment and service coordination team							79	2.8	2.3-3.3			
Older people team	22	3.6	2.8-4.5	59	3.8	3.2-4.4	107	3.2	2.8-3.6	48	2.6	2.1-3.1
Pacific people team				196	1.9	1.7-2.1	1,269	1.1	1.0-1.1	74	0.6	0.3-0.8
Specialty team	163	4.9	4.5-5.3	56	3.5	3.0-4.0						
Total	11,281	3.7	3.7-3.7	13,676	3.2	3.2-3.3	42,440	2.4	2.3-2.4	7,857	1.5	1.5-1.6
Inpatient services												
Alcohol and drug team				225	2.5	2.3-2.7				212	2.1	2.0-2.3
Forensic team							66	5.0	4.4-5.5	27	1.8	0.8-2.8
Inpatient team				8,714	4.6	4.5-4.6	1,042	3.0	2.9-3.2	7,829	2.0	2.0-2.1
Maternal mental health team				96	3.1	2.7-3.5				78	2.3	1.8-2.7
Older people team										22	3.5	2.4-4.5
Specialty team										41	3.1	2.7-3.5
Total				9,107	4.5	4.4-4.5	1,125	3.1	3.0-3.3	8,222	2.0	2.0-2.1

Notes: N = number of collections in period. Average = average number of HoNOS items in the clinically significant range (ie scoring 2, 3, or 4). CI = confidence interval for average score. Community discharge does not include discharge to an inpatient unit. **Interpretation:** If confidence intervals for two scores do not overlap, then the scores have a statistically significant difference. It is important to note that statistical significance may not indicate a clinically significant difference

Graph 4: Average number of clinically significant HoNOS items at admission and discharge by ethnic group: New Zealand, Jan - Dec 2019 and Jan - Dec 2020

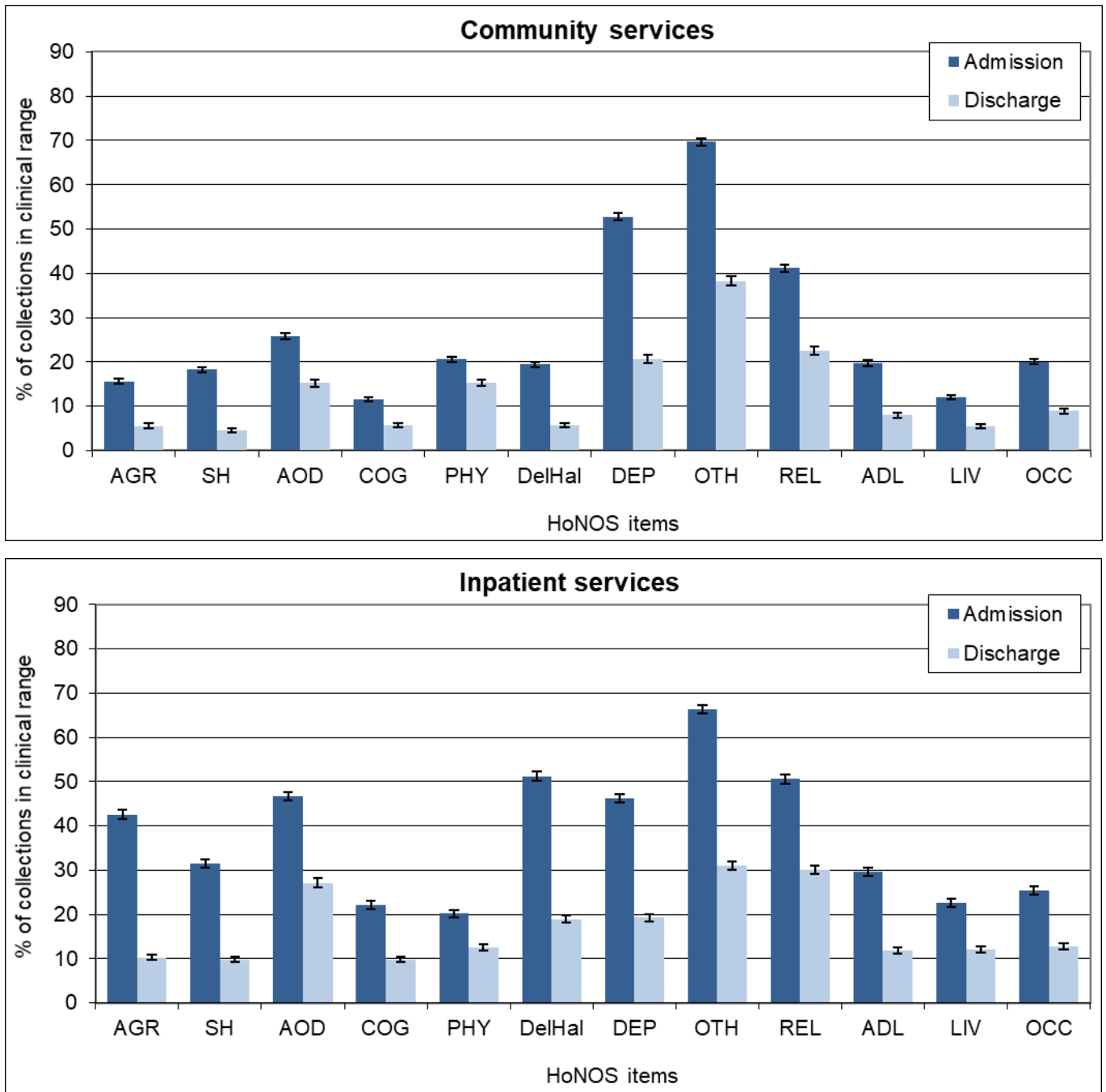


Notes: Average number of HoNOS items in the clinical range (2, 3 or 4). Community discharge does not include discharge to an inpatient unit.

Interpretation: Points are significantly different if error bars don't overlap. Decrease between admission and discharge is an indication of the outcomes achieved by the service and service user. A greater decrease between admission and discharge indicates a better outcome. A lower admission score could be indication of service users seeking out and being engaged by services at a lower level of acuity.

Target: A greater decrease from admission to discharge and smaller percentage in clinical range at discharge.

Graph 5a: Percentage of collections in clinical range on each HoNOS item (admission and discharge collections): New Zealand, Jan - Dec 2020



Notes: Percentage of service users in the clinical range (2, 3 or 4) for each HoNOS item. Community discharge does not include discharge to an inpatient unit.

Interpretation: The longer the bar, the more prevalent the difficulty measured by the item is amongst service users. A greater decrease in the length of the bar from admission to discharge suggests a better outcome for the difficulty measured by the item. Items that show medium to high frequency and less change may suggest possible targets for service improvement.

Target: A greater decrease from admission to discharge and smaller percentage in clinical range at discharge.

Table 5a: Percentage of collections in clinical range on each HoNOS item (admission and discharge collections) by team: New Zealand Jan - Dec 2020

Community services

First 6 HoNOS items														
Team type	N		AGR		SH		AOD		COG		PHY		DelHal	
	Adm	Disch	Adm	Disch	Adm	Disch	Adm	Disch	Adm	Disch	Adm	Disch	Adm	Disch
Alcohol and drug team	446	249	12%	9%	11%	3%	85%	45%	6%	4%	24%	12%	2%	1%
Child and youth team	49	65	24%	8%	33%	12%	22%	12%	14%	6%	16%	17%	10%	5%
Community team	10,525	5,893	17%	6%	21%	5%	26%	17%	12%	6%	20%	17%	20%	7%
Early intervention team	355	135	15%	6%	8%	2%	30%	24%	23%	9%	7%	4%	56%	11%
Eating disorders team	378	178	5%	4%	13%	5%	9%	4%	12%	2%	41%	16%	12%	5%
Forensic team	24	61	17%	2%	17%	2%	21%	5%	8%	0%	4%	7%	25%	3%
Kaupapa Māori team	502	207	10%	9%	9%	3%	28%	17%	13%	6%	18%	13%	29%	10%
Maternal mental health team	1,043	922	11%	3%	8%	1%	4%	2%	6%	2%	19%	7%	2%	0%
Older people team	59	48	29%	8%	5%	2%	2%	0%	76%	73%	44%	52%	29%	6%
Pacific people team	196	74	5%	0%	6%	0%	16%	3%	5%	5%	15%	14%	23%	3%
Specialty team	56		7%		16%		11%		7%		50%		5%	
Total	13,657	7,846	16%	6%	18%	5%	26%	15%	12%	6%	21%	15%	19%	6%

Second 6 HoNOS items												
Team type	DEP		OTH		REL		ADL		LIV		OCC	
	Adm	Disch	Adm	Disch	Adm	Disch	Adm	Disch	Adm	Disch	Adm	Disch
Alcohol and drug team	40%	15%	50%	30%	43%	23%	12%	4%	11%	8%	22%	10%
Child and youth team	61%	30%	78%	56%	43%	26%	29%	14%	16%	9%	29%	6%
Community team	53%	21%	70%	39%	43%	24%	20%	8%	12%	6%	21%	10%
Early intervention team	33%	10%	58%	34%	41%	19%	28%	11%	13%	1%	21%	8%
Eating disorders team	62%	37%	99%	64%	32%	20%	34%	9%	10%	5%	17%	5%
Forensic team	17%	2%	42%	5%	42%	2%	4%	0%	29%	18%	29%	15%
Kaupapa Māori team	41%	19%	57%	33%	40%	27%	17%	8%	18%	8%	21%	9%
Maternal mental health team	72%	18%	85%	40%	33%	18%	14%	3%	8%	4%	8%	2%
Older people team	31%	8%	36%	11%	38%	29%	60%	56%	12%	2%	26%	10%
Pacific people team	27%	5%	42%	11%	30%	7%	9%	5%	6%	3%	5%	0%
Specialty team	61%		93%		42%		32%		7%		20%	
Total	53%	21%	70%	38%	41%	23%	20%	8%	12%	5%	20%	9%

Inpatient services

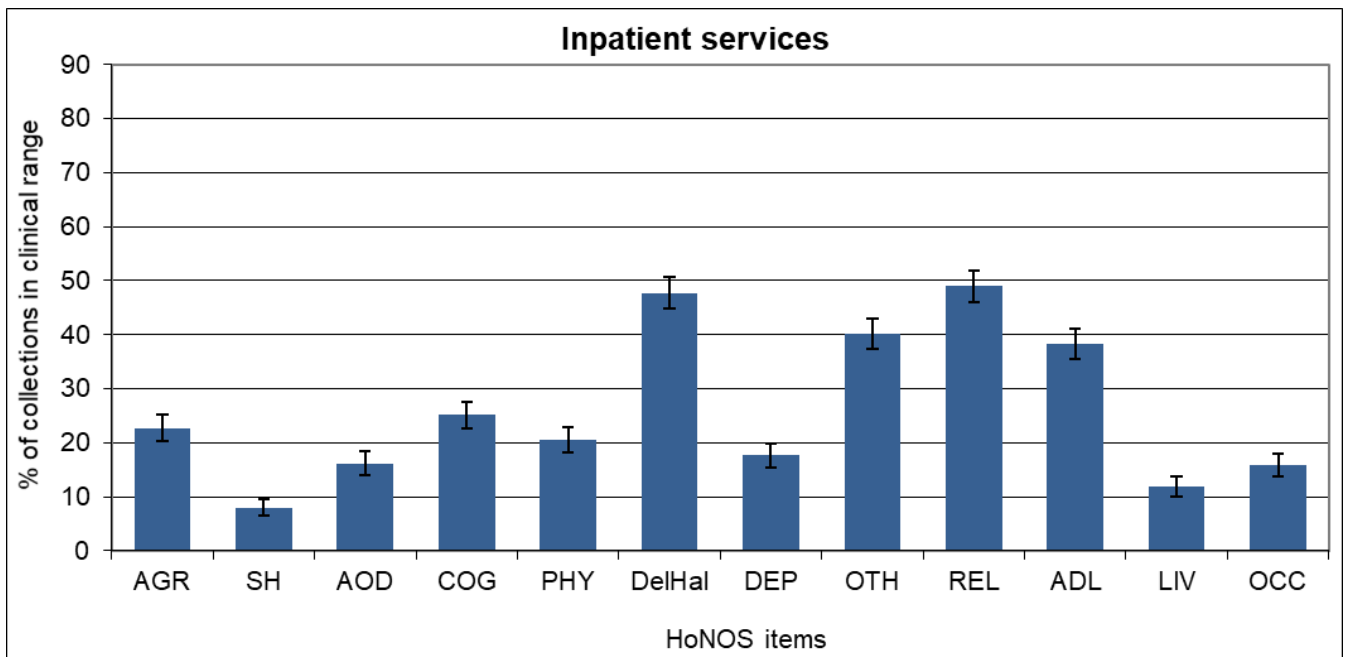
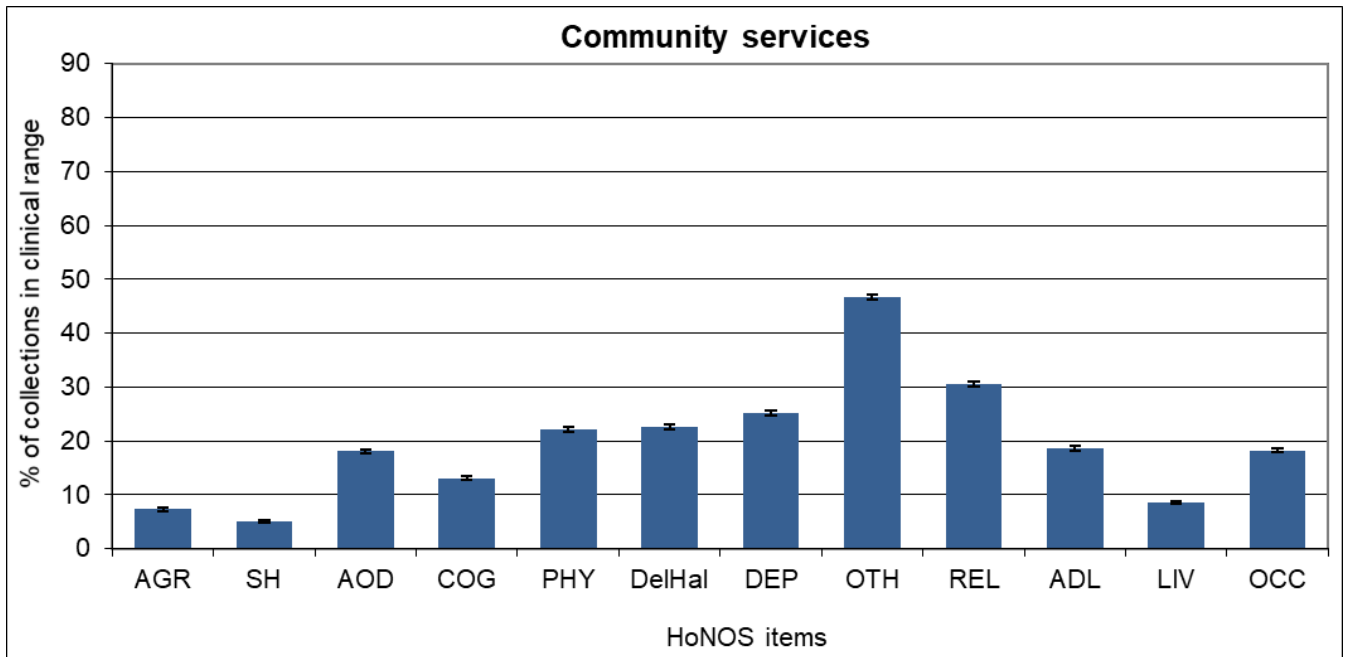
First 6 HoNOS items														
Team type	N		AGR		SH		AOD		COG		PHY		DelHal	
	Adm	Disch	Adm	Disch	Adm	Disch	Adm	Disch	Adm	Disch	Adm	Disch	Adm	Disch
Alcohol and drug team	225	212	4%	9%	0%	2%	100%	100%	8%	8%	36%	30%	2%	2%
Forensic team		27		15%		11%		8%		11%		19%		26%
Inpatient team	8,704	7,828	44%	10%	32%	10%	46%	26%	23%	10%	20%	12%	53%	20%
Maternal mental health team	96	78	10%	17%	28%	23%	10%	10%	11%	6%	18%	6%	24%	12%
Older people team		22		18%		14%		5%		64%		50%		14%
Specialty team		41		17%		29%		17%		0%		12%		2%
Total	9,097	8,221	43%	10%	31%	10%	47%	27%	22%	10%	20%	12%	51%	19%
Second 6 HoNOS items														
Team type	DEP		OTH		REL		ADL		LIV		OCC			
	Adm	Disch	Adm	Disch	Adm	Disch	Adm	Disch	Adm	Disch	Adm	Disch	Adm	Disch
Alcohol and drug team	47%	27%	26%	21%	12%	6%	6%	4%	11%	9%	20%	0%		
Forensic team		12%		15%		26%		15%		7%		20%		
Inpatient team	46%	19%	67%	31%	52%	30%	30%	12%	23%	12%	26%	13%		
Maternal mental health team	69%	40%	67%	47%	35%	34%	26%	14%	11%	9%	5%	8%		
Older people team		23%		24%		45%		50%		20%		25%		
Specialty team		32%		93%		66%		15%		15%		12%		
Total	46%	19%	66%	31%	51%	30%	30%	12%	23%	12%	25%	13%		

Notes: Percentage of service users in the clinical range (2, 3 or 4) for each HoNOS item. Community discharge does not include discharges to an inpatient unit.

Interpretation: The higher the percentage, the more prevalent the difficulty measured by the item is amongst service users. A greater decrease between admission and discharge suggests a better outcome for the difficulty measured by the item. Items that show medium to high frequency and less change may suggest possible targets for service improvement.

Target: A greater decrease from admission to discharge and smaller percentage in clinical range at discharge.

Graph 5b: Percentage of collections in clinical range on each HoNOS item (review collections): New Zealand, Jan - Dec 2020



Notes: Percentage of service users in the clinical range (2, 3 or 4) for each HoNOS item on review collections. Due to most admission being less than 91 days, the data set for review collections in inpatient settings is relatively small.

Interpretation: The longer the bar, the more prevalent the difficulty measured by the item is amongst service users.

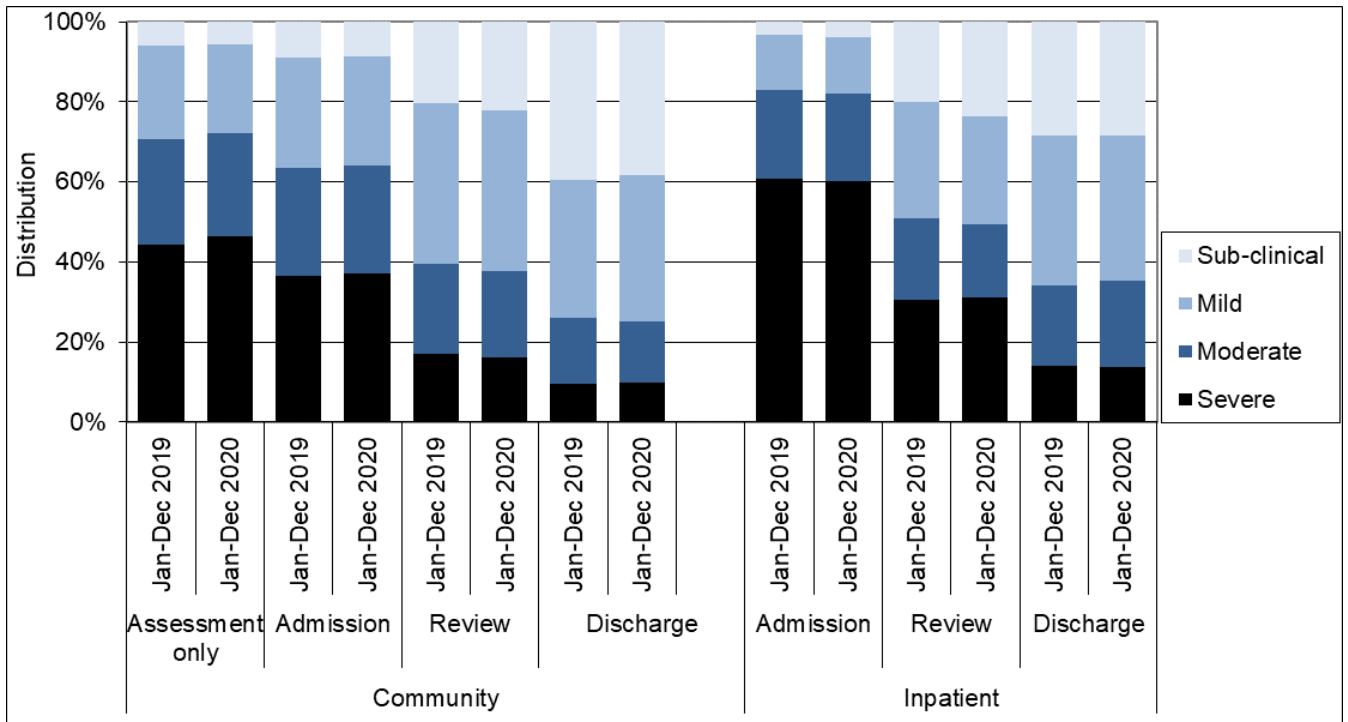
Table 5b: Percentage of collections in clinical range on each HoNOS item (review collections) by team: New Zealand, Jan - Dec 2020

Team type	N	AGR	SH	AOD	COG	PHY	DeIHaI	DEP	OTH	REL	ADL	LIV	OCC
Community services													
Alcohol and drug team	776	10%	5%	63%	8%	36%	6%	30%	51%	31%	14%	14%	23%
Child and youth team	184	16%	14%	11%	9%	17%	12%	38%	53%	35%	15%	4%	13%
Co-existing problem team	37	11%	5%	26%	11%	24%	6%	27%	51%	49%	14%	8%	14%
Community team	34,227	7%	5%	17%	13%	23%	24%	25%	46%	31%	19%	8%	19%
Early intervention team	1,278	7%	5%	28%	16%	8%	29%	22%	48%	31%	24%	7%	15%
Eating disorders team	245	6%	9%	7%	10%	34%	6%	50%	95%	26%	21%	8%	14%
Forensic team	82	5%	4%	14%	1%	18%	13%	6%	34%	27%	10%	10%	35%
Kaupapa Māori team	2,866	8%	4%	24%	15%	25%	25%	22%	46%	29%	19%	14%	22%
Maternal mental health team	1,213	10%	3%	3%	4%	17%	2%	51%	74%	32%	10%	7%	9%
Needs assessment and service coordination team	79	9%	3%	22%	28%	29%	32%	11%	37%	33%	33%	15%	25%
Older people team	107	21%	1%	6%	57%	54%	24%	18%	35%	31%	56%	4%	19%
Pacific people team	1,269	3%	1%	11%	6%	12%	17%	10%	17%	14%	8%	4%	5%
Total	42,403	7%	5%	18%	13%	22%	23%	25%	47%	31%	19%	9%	18%
Inpatient services													
Forensic team	66	38%	14%	18%	59%	42%	59%	23%	56%	67%	73%	14%	33%
Inpatient team	1,042	22%	8%	16%	23%	19%	47%	17%	40%	48%	37%	12%	15%
Total	1,125	23%	8%	16%	25%	20%	48%	18%	40%	49%	38%	12%	16%

Notes: Percentage of service users in the clinical range (2, 3 or 4) for each HoNOS item on review collections. Due to most admission being less than 91 days, the data set for review collections in inpatient settings is relatively small.

Interpretation: The higher the percentage, the more prevalent the difficulty measured by the item is amongst service users.

Graph 6: Index of Severity ratings for HoNOS by collection type: New Zealand, Jan - Dec 2019 and Jan - Dec 2020



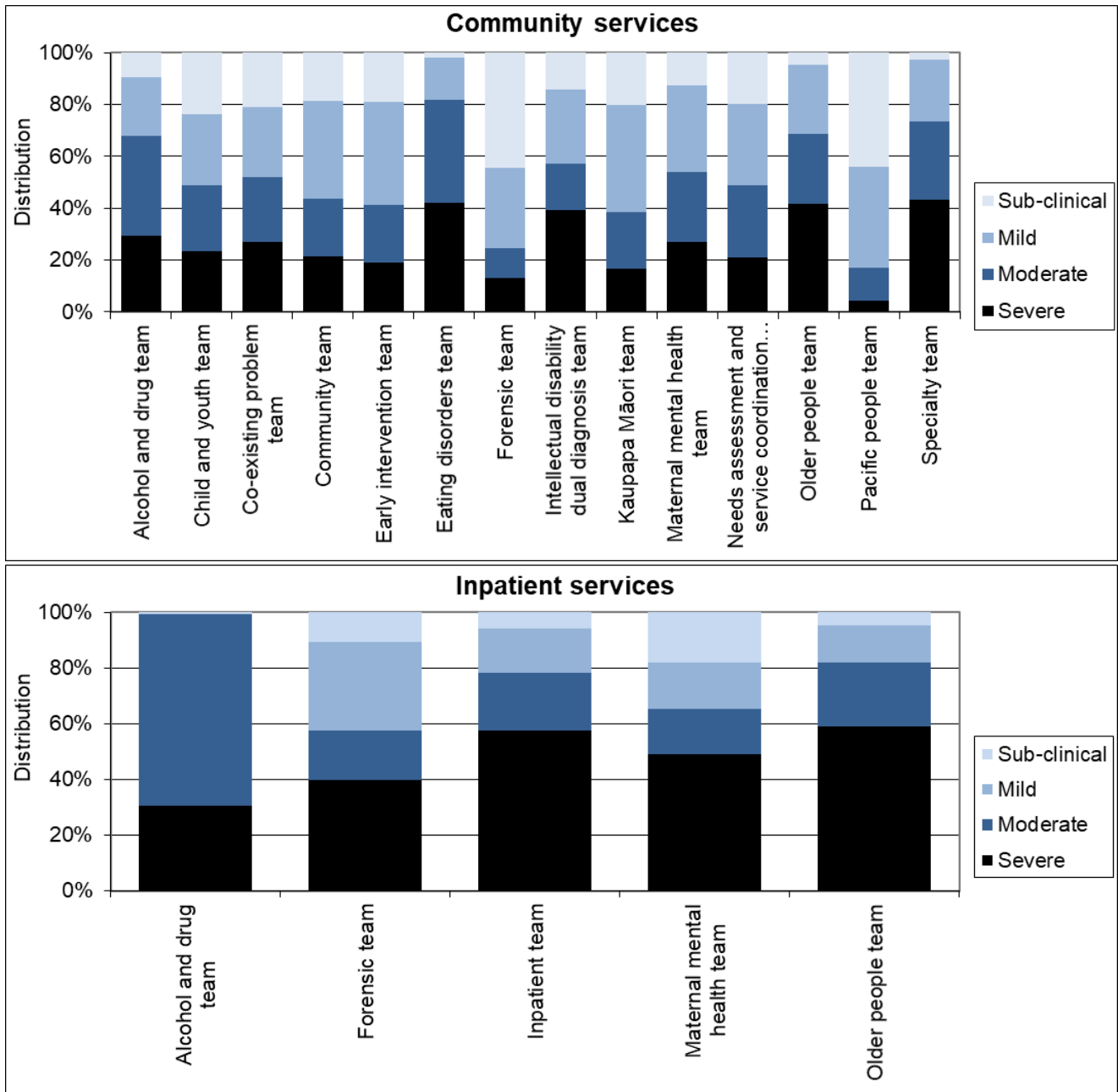
Notes: Community discharge does not include discharge to an inpatient unit. Index of Severity: Sub clinical = all items <2, mild = at least one item >1 and all items <3, moderate = at least one item >=3, severe = at least 2 items >=3 using first 10 items.

Interpretation: Darker bars indicate higher overall level of severity. More positive outcome is shown by larger decrease in darker sections of bar between admission and discharge.

2. Other measures of service activity

This section presents other information related to data collected in PRIMHD that may be helpful for understanding how teams are operating. This includes information relevant to caseload intensity and team activity.

Graph 7: Index of Severity for HoNOS (admission and review collections) by team, New Zealand, Jan - Dec 2020



Notes: Only data related to collection at admission and review is included so that results reflect the severity of service users during their engagement with the service. Index of Severity: Sub clinical = all items <2, mild = at least one item >1 and all items <3, moderate = at least one item >=3, severe = at least 2 items >=3 using first 10 items.

Interpretation: This graph gives an impression of the overall severity of the caseload for different teams at admission. The longer the darker bar, the higher the overall severity of the team's caseload.

Table 7: Index of Severity for HoNOS by collection type and team: New Zealand, Jan - Dec 2020

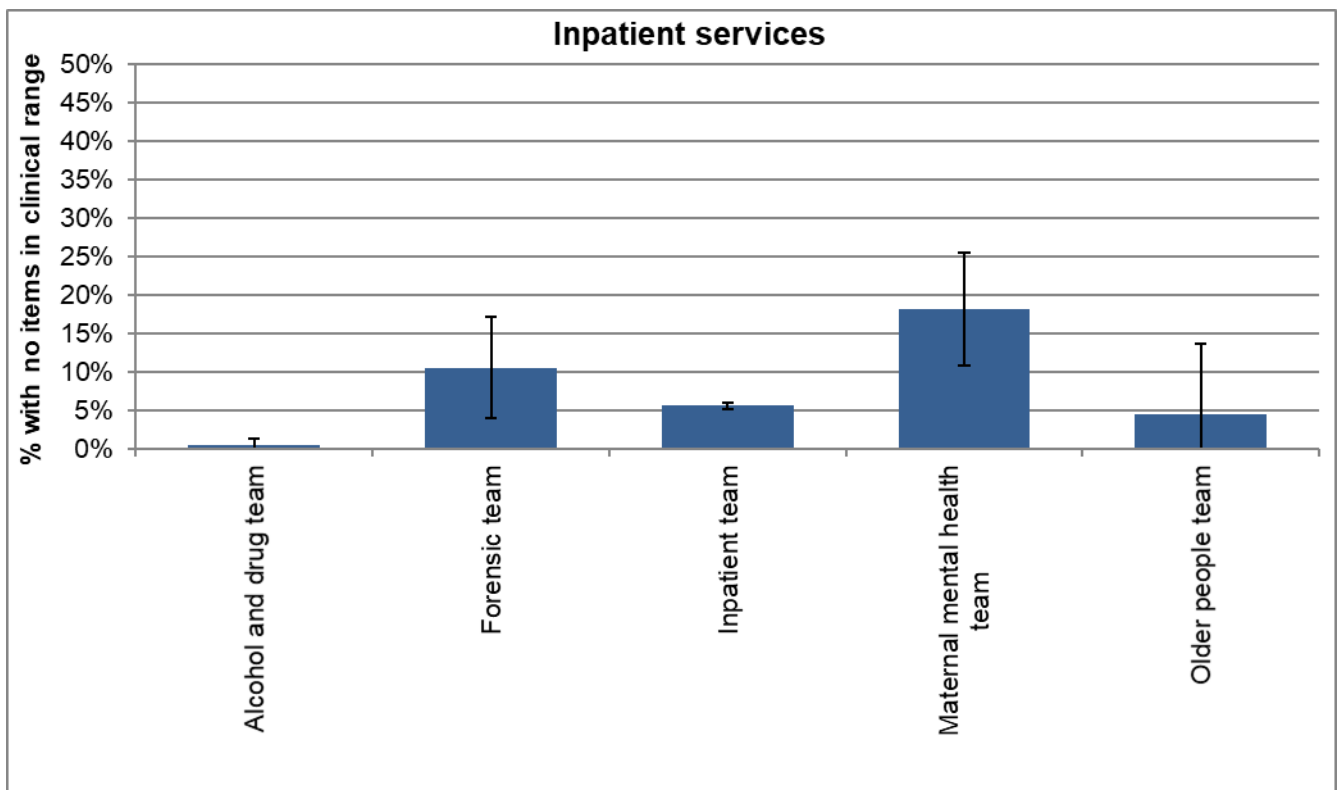
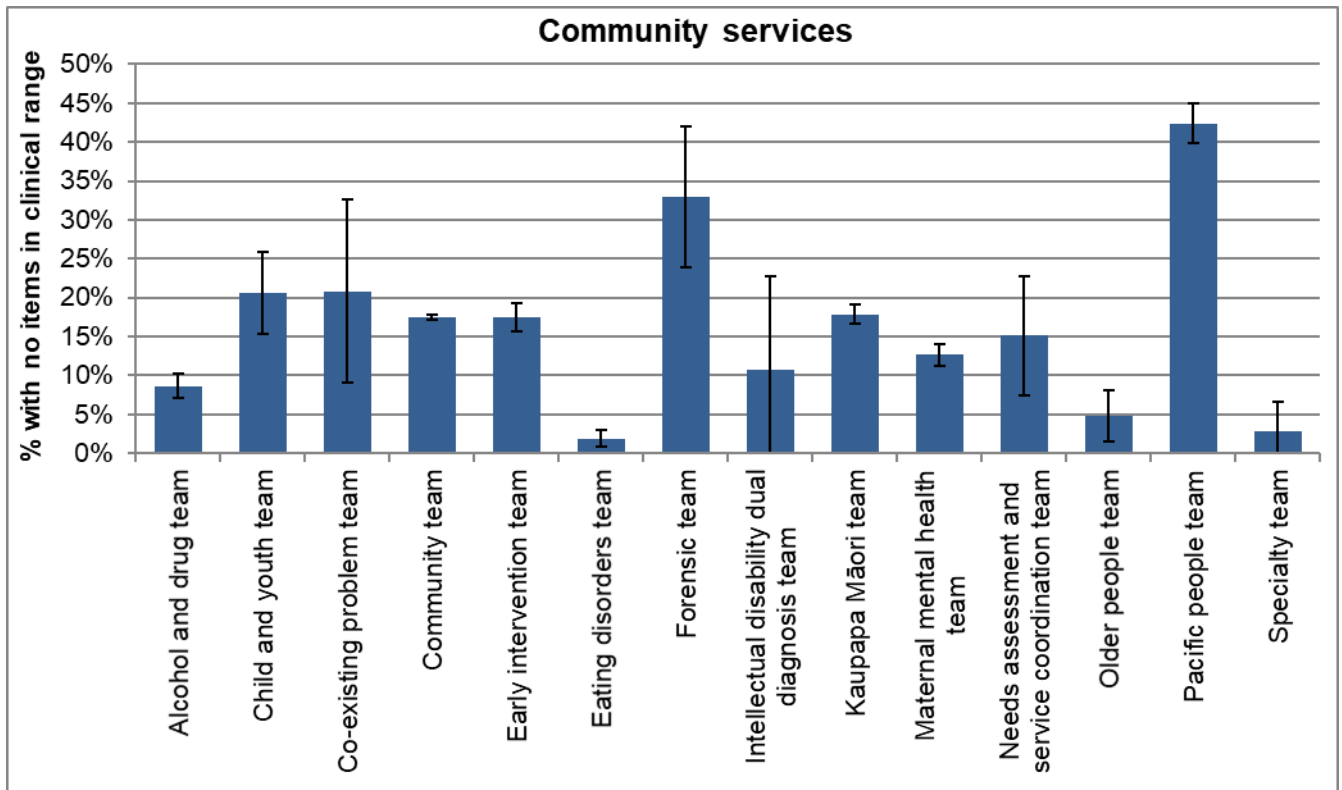
Team type	Assessment only					Admission					Review					Discharge				
	Sub	Mild	Mod	Sev	N	Sub	Mild	Mod	Sev	N	Sub	Mild	Mod	Sev	N	Sub	Mild	Mod	Sev	N
Community services																				
Alcohol and drug team	10%	16%	26%	48%	252	5%	16%	44%	35%	446	12%	27%	35%	26%	776	37%	35%	18%	10%	249
Child and youth team	4%	22%	41%	33%	27	10%	22%	33%	35%	49	27%	29%	24%	20%	184	26%	40%	20%	14%	65
Co-existing problem team											24%	32%	27%	16%	37					
Community team	5%	22%	26%	47%	10,307	9%	27%	26%	38%	10,538	22%	41%	21%	16%	34,259	36%	37%	16%	10%	5,901
Early intervention team						11%	34%	25%	30%	355	21%	42%	21%	16%	1,279	48%	31%	13%	7%	135
Eating disorders team	9%	18%	42%	30%	33	1%	8%	42%	49%	378	4%	29%	36%	31%	245	31%	25%	26%	18%	178
Forensic team	53%	19%	22%	6%	32	33%	33%	17%	17%	24	48%	30%	10%	12%	82	82%	13%	3%	2%	61
Kaupapa Māori team	11%	27%	23%	38%	252	13%	41%	22%	24%	502	21%	41%	22%	15%	2,869	38%	43%	14%	6%	207
Maternal mental health team	20%	43%	19%	19%	164	8%	27%	29%	36%	1,043	17%	39%	25%	19%	1,213	52%	34%	9%	5%	922
Needs assessment and service coordination team											22%	34%	24%	20%	79					
Older people team	9%	14%	14%	64%	22	3%	24%	24%	49%	59	6%	28%	29%	37%	107	10%	19%	33%	38%	48
Pacific people team						23%	47%	20%	10%	196	47%	38%	11%	3%	1,269	70%	26%	4%	0%	74
Specialty team	1%	10%	12%	77%	163	2%	27%	21%	50%	56										
Total	6%	22%	26%	46%	11,281	9%	27%	27%	37%	13,676	22%	40%	21%	16%	42,440	38%	36%	15%	10%	7,857

Team type	Assessment only					Admission					Review					Discharge				
	Sub	Mild	Mod	Sev	N	Sub	Mild	Mod	Sev	N	Sub	Mild	Mod	Sev	N	Sub	Mild	Mod	Sev	N
Inpatient services																				
Alcohol and drug team						0%	0%	69%	31%	225						0%	0%	74%	25%	212
Forensic team											8%	35%	20%	38%	66	56%	26%	7%	11%	27
Inpatient team						4%	15%	21%	61%	8,714	24%	26%	18%	31%	1,042	29%	38%	20%	13%	7,829
Maternal mental health team						13%	15%	19%	54%	96						24%	31%	24%	21%	78
Older people team																9%	14%	18%	59%	22
Specialty team																2%	41%	27%	29%	41
Total						4%	14%	22%	60%	9,107	24%	27%	18%	31%	1,125	28%	36%	21%	14%	8,222

Notes: Sub = sub clinical, Mild = mild, Mod = moderate, Sev = severe on Index of Severity. Only admission collection data is included so that results reflect the severity of service users during their engagement with the service. Index of Severity: Sub clinical = all items <2, mild = at least one item >1 and all items <3, moderate = at least one item >=3, severe = at least 2 items >=3 using first 10 items. Community discharge does not include discharge to an inpatient unit.

Interpretation: Larger percentages in the columns to the right for each type of collection, the higher the overall severity of the team's caseload.

Graph 8: Collections with no HoNOS items in clinical range: New Zealand, Jan - Dec 2020



Notes: Includes admission and review collections. Shows percentage of service users with all HoNOS items less than two, ie no HoNOS items in the clinical range.

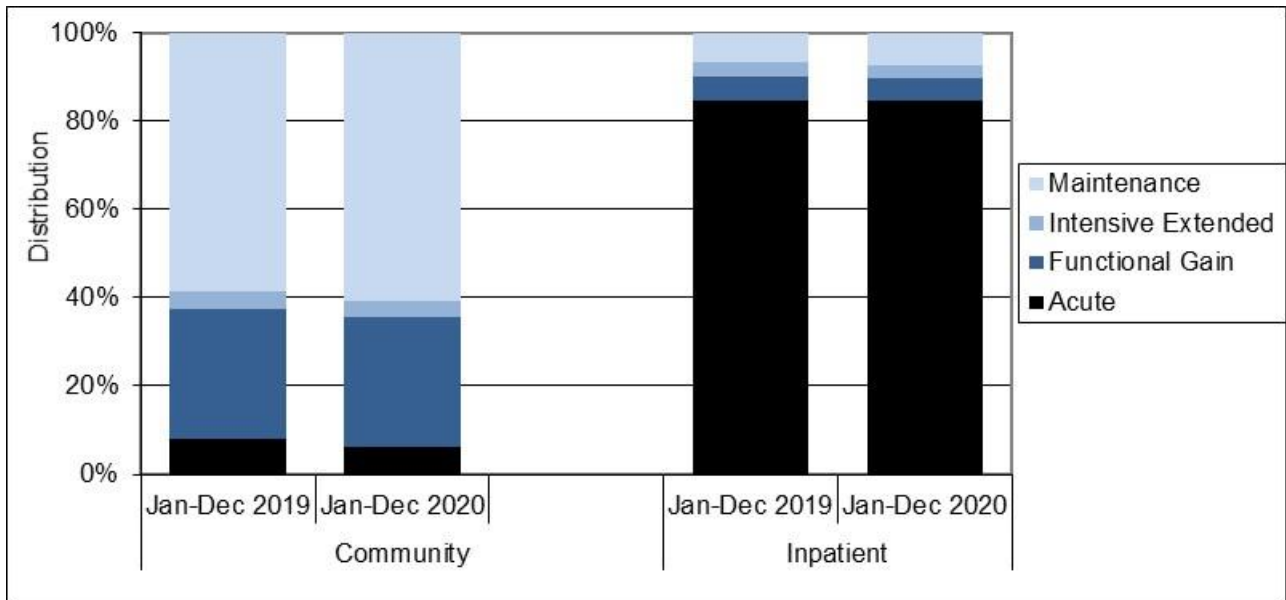
Interpretation: There are a variety of reasons that may make it appropriate for service users to remain in the service even though they show no HoNOS items in the clinical range. However, teams showing a larger or substantial percentage of service users with no HoNOS items in the clinical range could benefit from reviewing these cases to ensure that the service remains appropriate for this service user.

Table 8: Collections with no HoNOS items in clinical range: New Zealand, Jan - Dec 2020

Team type	Number of collections with no items in clinical range	Percentage with no items in clinical range
Community services		
Alcohol and drug team	106	9%
Child and youth team	48	21%
Co-existing problem team	10	21%
Community team	7,840	18%
Early intervention team	286	18%
Eating disorders team	12	2%
Forensic team	35	33%
Intellectual disability dual diagnosis team	3	11%
Kaupapa Māori team	603	18%
Maternal mental health team	285	13%
Needs assessment and service coordination team	13	15%
Older people team	8	5%
Pacific people team	621	42%
Specialty team	2	3%
Total	9,872	18%
Inpatient services		
Alcohol and drug team	1	0%
Forensic team	9	11%
Inpatient team	548	6%
Maternal mental health team	20	18%
Older people team	1	5%
Total	579	6%

Notes: For further information see notes for graph 8.

Graph 9: Focus of care categories: New Zealand, Jan - Dec 2019 and Jan - Dec 2020



Notes: Data from review and discharge collections.

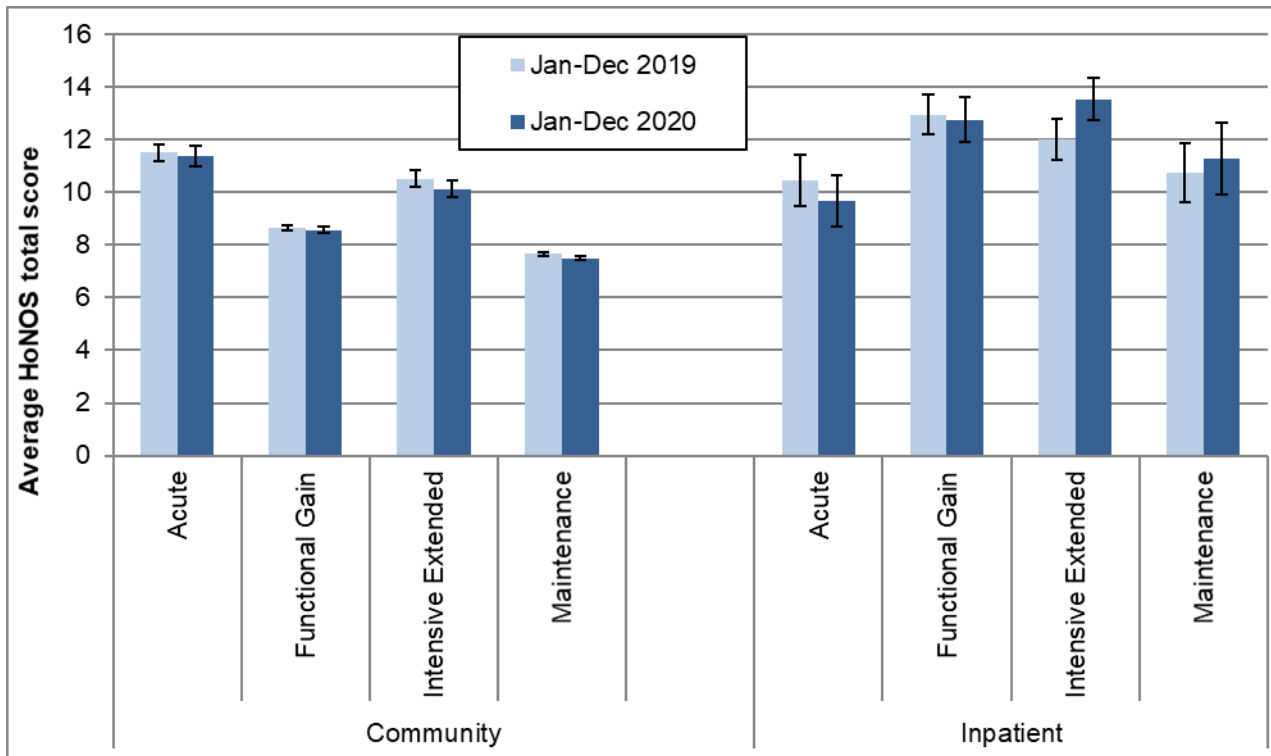
Interpretation: Darker bars indicate more intensive involvement in care, so a longer, darker bar in general suggests more intensive working. A longer functional gain bar and shorter maintenance bar potentially suggests more recovery focused ways of working.

Table 9: Focus of care categories by team: New Zealand, Jan - Dec 2019 and Jan - Dec 2020

Team type	Acute		Functional gain		Intensive extended		Maintenance		Number of collections	
	Last	This	Last	This	Last	This	Last	This	Last	This
Community services										
Alcohol and drug team	8%	6%	44%	48%	1%	0%	47%	46%	986	1,037
Child and youth team	4%	4%	40%	31%	8%	10%	49%	54%	277	224
Co-existing problem team	13%	8%	13%	25%	0%	0%	75%	68%	40	40
Community team	8%	7%	29%	28%	4%	4%	59%	61%	41,011	37,372
Early intervention team	6%	5%	51%	54%	3%	3%	41%	38%	1,398	1,328
Eating disorders team	8%	10%	62%	55%	11%	11%	20%	25%	564	480
Forensic team	3%	3%	3%	1%	4%	3%	90%	92%	143	92
Intellectual disability dual diagnosis team		13%		4%		0%		83%		23
Kaupapa Māori team	9%	4%	15%	14%	3%	3%	74%	80%	3,533	3,101
Maternal mental health team	8%	6%	57%	61%	2%	2%	32%	31%	2,104	2,037
Needs assessment and service coordination team	5%	1%	19%	10%	5%	10%	72%	78%	124	79
Older people team	7%	7%	9%	8%	3%	1%	81%	84%	110	100
Pacific people team	2%	2%	11%	11%	0%	0%	86%	87%	1,131	1,313
Specialty team	27%	20%	18%	36%	6%	4%	49%	40%	51	25
Total	8%	6%	30%	29%	4%	4%	59%	61%	51,496	47,261
Inpatient services										
Alcohol and drug team	100%	100%	0%	0%	0%	0%	0%	0%	233	208
Eating disorders team	81%		19%		0%		0%		21	
Forensic team	19%	14%	10%	5%	56%	59%	15%	23%	79	87
Inpatient team	85%	85%	6%	5%	3%	3%	7%	7%	8,258	7,596
Maternal mental health team	83%	82%	7%	11%	0%	0%	10%	7%	87	88
Specialty team	100%	100%	0%	0%	0%	0%	0%	0%	26	28
Total	85%	85%	6%	5%	3%	3%	7%	7%	8,717	8,039

Notes: For further information see notes for Graph 9.

Graph 10: HoNOS total score (review collections) by focus of care: New Zealand, Jan - Dec 2019 and Jan - Dec 2020



Notes: This data is just for review collections.

Interpretation: Points are significantly different if error bars don't overlap. A general downward trend in scores from acute to maintenance focus of care might be expected.

Table 10: HoNOS total score (review collections) by focus of care by team: New Zealand, Jan - Dec 2020

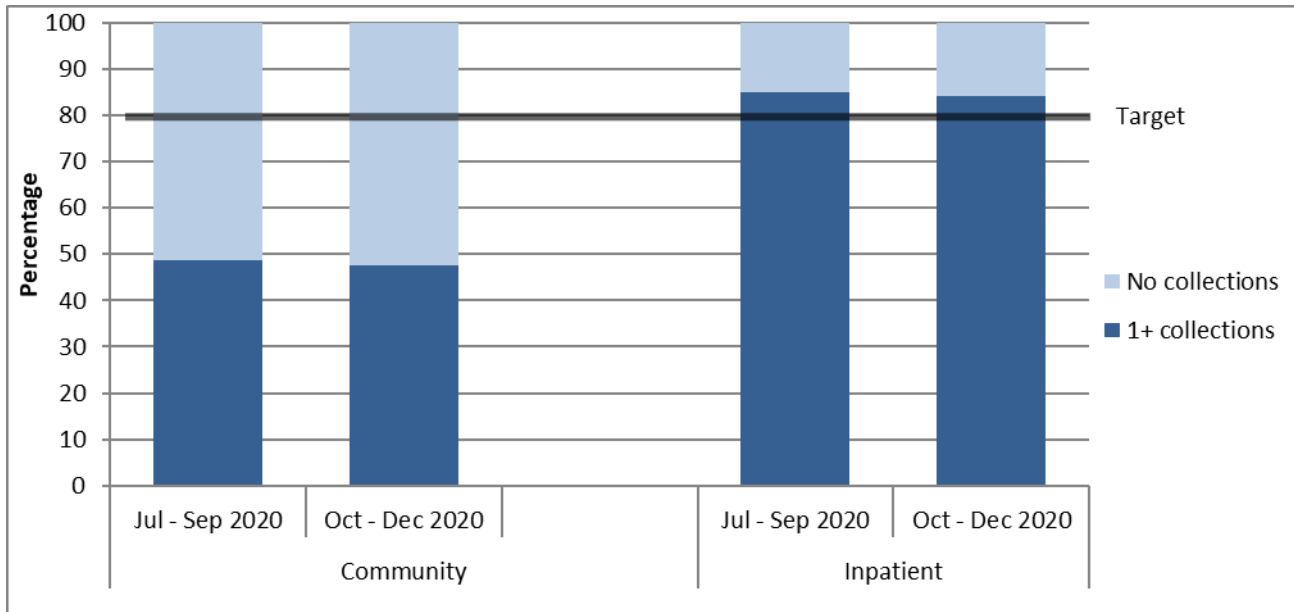
Team type	Acute			Functional Gain			Intensive Extended			Maintenance		
	N	Mean	CI	N	Mean	CI	N	Mean	CI	N	Mean	CI
Community services												
Alcohol and drug team	36	11.0	8.9-13.2	266	9.5	8.7-10.2				445	9.3	8.8-9.8
Community team	821	11.2	10.7-11.6	46	7.6	6.0-9.1				92	7.7	6.3-9.0
Co-existing problem team										26	7.7	5.6-9.8
Community team				8,212	8.6	8.5-8.7	1,261	10.0	9.6-10.3	19,772	7.6	7.5-7.7
Early intervention team	39	13.7	11.0-16.5	606	8.2	7.7-8.6	35	14.3	11.6-16.9	410	6.5	6.0-7.1
Eating disorders team	23	11.3	8.9-13.7	120	8.4	7.4-9.5	37	13.9	11.6-16.3	51	8.2	6.9-9.4
Forensic team										76	6.2	4.9-7.4
Kaupapa Māori team	63	12.5	11.2-13.8	383	9.8	9.2-10.3	69	9.6	7.7-11.4	2,163	8.3	8.1-8.6
Maternal mental health team	48	9.5	7.8-11.3	742	7.8	7.5-8.1	23	8.8	7.0-10.7	319	5.4	5.0-5.8
Needs assessment and service coordination team										61	8.5	7.3-9.8
Older people team										59	11.8	10.5-13.2
Pacific people team				99	5.5	4.5-6.4				1,075	4.3	4.1-4.5
Total	1,057	11.4	11.0-11.8	10,502	8.6	8.5-8.7	1,453	10.1	9.8-10.5	24,575	7.5	7.4-7.6
Inpatient services												
Forensic team							50	14.9	13.8-15.9			
Inpatient team	251	9.8	8.8-10.8	162	12.8	11.9-13.6	138	13.1	12.0-14.1	127	11.6	10.2-13.0
Total	267	9.7	8.7-10.7	166	12.7	11.9-13.6	188	13.5	12.7-14.3	135	11.3	9.9-12.7

Notes: For further information see notes for Graph 10.

3. Collection completion and validity

This section presents information about the completeness and validity of the data on which the remainder of this report is based. It also shows the current targets for the variables presented.

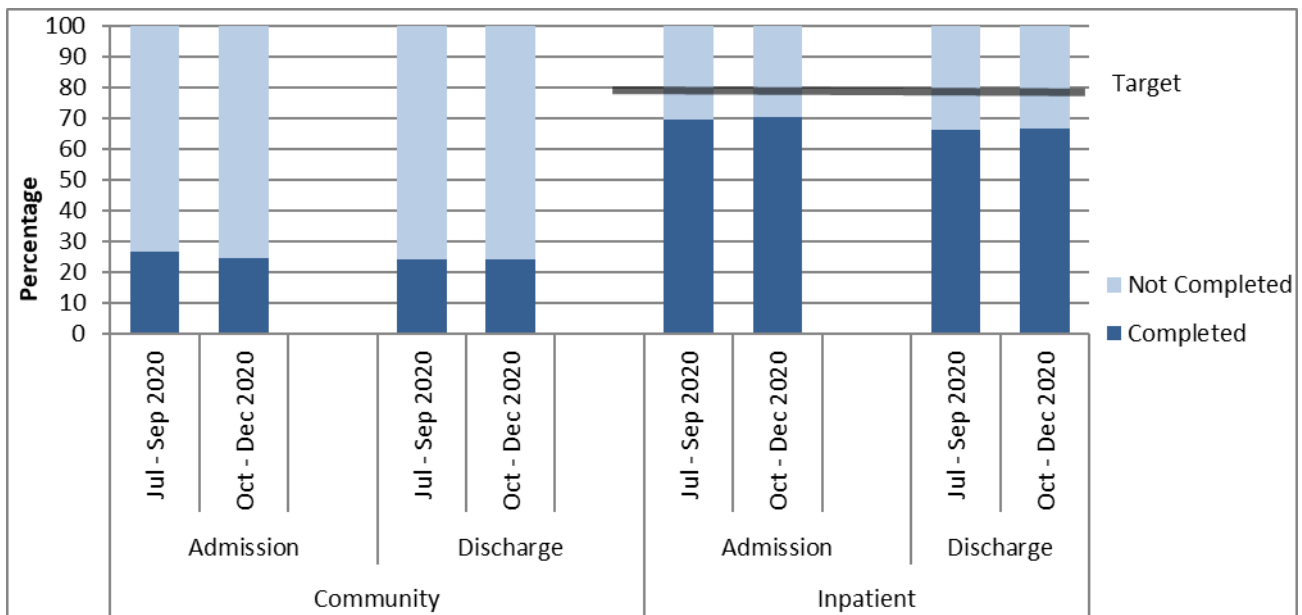
Graph 11: Percentage of service users with at least one collection during the period: New Zealand, Jul – Sep 2020 and Oct – Dec 2020 (18 to 64 years)



Interpretation: The longer the dark part of the bar, the more completely the data set includes all service users, and the more meaningful and representative the graphs, tables, and analyses using these data will be. This data is approximate due to movement of service users between teams and similar variations; however, it does provide a reasonably accurate representation of completion of measures. Only data with valid collections is included.

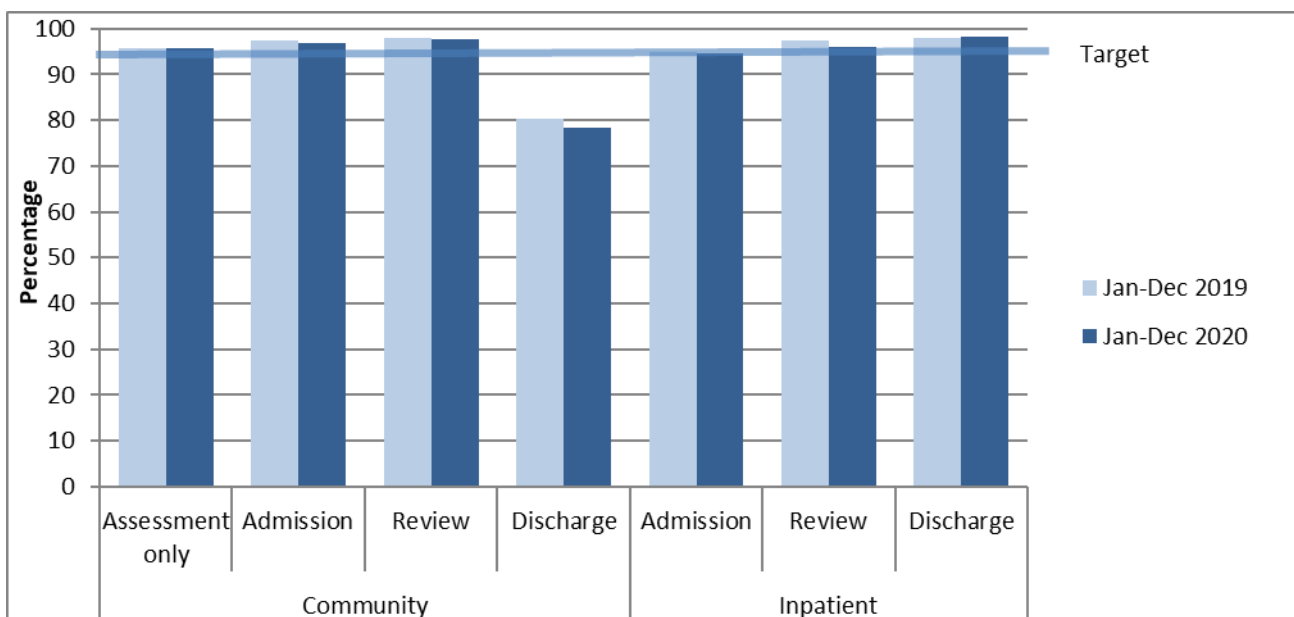
Target: To meet or exceed the target shown on the graph for the percentage of service users with at least one collection within the period.

Graph 12: Percentage of service users with admission and discharge collections completed: New Zealand, Jul – Sep 2020 and Oct – Dec 2020 (18 to 64 years)



Interpretation: The longer the dark bar, the larger the percentage of admission and discharge that had the relevant data collection type. Data is approximate due to movement of service users between teams and similar variations; however, it does provide a reasonably accurate representation of completion of measures. Only data with valid collections is included.

Graph 13: Percentage of valid collections, HoNOS: New Zealand, Jan - Dec 2019 and Jan - Dec 2020



Notes: Valid = Two or fewer of the 12 items scored as unknown or missing. Discharge excludes collection types for lost to care, discharge dead and brief episode of care. Collection in drug and alcohol teams is not required, therefore AOD data is excluded.

Interpretation: The longer the dark lines, the higher the percentage of valid scores.

Target: Aim for 95% valid collections.

Table 13: Invalid collections by team, by HoNOS item: New Zealand, Jan - Dec 2020

Team type	% Invalid			Number of invalid ratings by HoNOS item												Total number
	Adm	Rev	Dch	1	2	3	4	5	6	7	8	9	10	11	12	
Community services																
Child and youth team	2%	1%	15%	19	20	19	18	18	22	18	20	18	18	19	18	358
Community team	3%	2%	22%	3,708	3,840	4,546	3,952	3,900	3,947	4,003	4,024	4,107	4,030	4,158	4,455	68,599
Early intervention team	2%	2%	24%	124	136	151	129	128	132	131	152	139	131	133	135	2,119
Eating disorders team	2%	2%	15%	64	67	68	64	63	61	63	59	59	59	60	63	999
Forensic team	11%	0%	0%	3	3	12	4	4	4	4	4	5	5	4	6	214
Intellectual disability dual diagnosis team				0	0	0	0	0	0	0	0	1	0	0	0	33
Kaupapa Māori team	4%	3%	23%	218	234	272	231	231	237	234	257	246	253	242	260	4,368
Maternal mental health team	2%	2%	19%	325	330	353	337	328	323	329	336	334	325	339	336	3,906
Needs assessment and service coordination team		0%		0	0	0	0	0	0	0	0	0	0	0	0	98
Older people team	5%	0%	4%	6	8	9	8	7	13	10	12	8	9	6	8	260
Pacific people team	1%	1%	20%	55	58	63	56	60	53	58	61	60	78	73	83	1,718
Specialty team	7%			17	16	21	20	17	16	19	22	80	78	82	81	325
Total	3%	2%	22%	4,539	4,712	5,514	4,819	4,756	4,808	4,869	4,947	5,057	4,986	5,116	5,445	83,010
Inpatient services																
Eating disorders team				0	0	0	0	0	0	0	0	0	0	0	0	28
Forensic team	5%	1%	0%	0	0	4	1	0	0	1	2	0	0	5	6	114
Inpatient team	5%	4%	2%	177	272	610	387	290	300	392	560	565	419	823	944	18,063
Maternal mental health team	3%		3%	3	4	7	3	4	3	4	4	5	3	10	11	193
Older people team	21%		4%	0	1	1	3	0	1	3	5	3	1	13	12	52
Specialty team			0%	0	0	0	0	0	0	0	0	0	0	0	0	59
Total	5%	4%	2%	180	277	622	394	294	304	400	571	573	423	851	973	18,509

Notes: Per cent (%) invalid collections = the percentage of collections that had three or more of the 12 items scored as unknown or missing. Number of invalid ratings by HoNOS item = for each of the HoNOS items, the number of collections for which that item was unknown or missing. Discharge excludes collection types for lost to care, deceased and brief episode of care. Collection in drug and alcohol teams is not required, therefore AOD data is excluded. **Interpretation:** The lower the per cent invalid, the higher the percentage of valid scores. The lower the number of invalid collections by HoNOS item, the more collections that have valid data on that HoNOS item. **Target:** Aim for 95% valid collections (5% invalid collections) or better. Aim for as few invalid items as possible, with all items having a similar validity rate.