



# PRIMHD summary report – HoNOS

Health of the Nation Outcomes Scales – working age adults report for New Zealand

This report summarises national Programme for the Integration of Mental Health Data (PRIMHD) data submitted by Te Whatu Ora Districts. In particular, it presents Health of the Nation Outcomes Scale (HoNOS) data for working aged adults, from services where HoNOS is the primary measure.

This report is organised into three major sections that provide information about:

- 1. Outcomes related information:** This provides indications about what changes have occurred for service users between entering and leaving the service. Outcome is assessed by comparing the group admitted and the group discharged from the service in the same time period. This should provide a reasonable indication of outcomes achieved unless the service user mix has changed significantly over the usual period for which service is delivered.
- 2. Service related information:** This provides information about the services, such as the overall severity of service users who use different services.
- 3. Collection completion and validity:** This details the completeness of the data set provided by your mental health services. This is important because it indicates how valid and reliable the data sets are likely to be. The less complete the data set, the less valid the information is likely to be.

In many cases the data is presented graphically for New Zealand, and then presented as a table for the individual team types (see team type classification factsheet).

The time period covered differs for the different data presented. See the title or the notes under the graphs or tables for information about the time period covered. Unless otherwise stated, the notes under the graphs also apply to the corresponding table.

For all graphs and tables, if there are less than twenty cases in the data set, then the information is not presented. This is because small samples frequently provide inaccurate and potentially misleading results. See the notes and user guide for other important information about the graphs and tables.

Where appropriate, the statistical **confidence interval** is presented. This is shown by error bars (small lines above and below the average) on the graphs, and a score range in some tables. As a rule of thumb, if the confidence intervals of two data points do not overlap, the two points can be considered to be significantly different. If the confidence intervals of the data points do overlap, we assume the points are not significantly different. It is important to note that statistical significance may not indicate a clinically significant difference.

**See the associated user guide for more information** about how to understand and use the data presented in this report.

Data for tables and graphs was extracted 26 April 2025 from PRIMHD by Te Whatu Ora, then analysed and formatted by Te Pou.

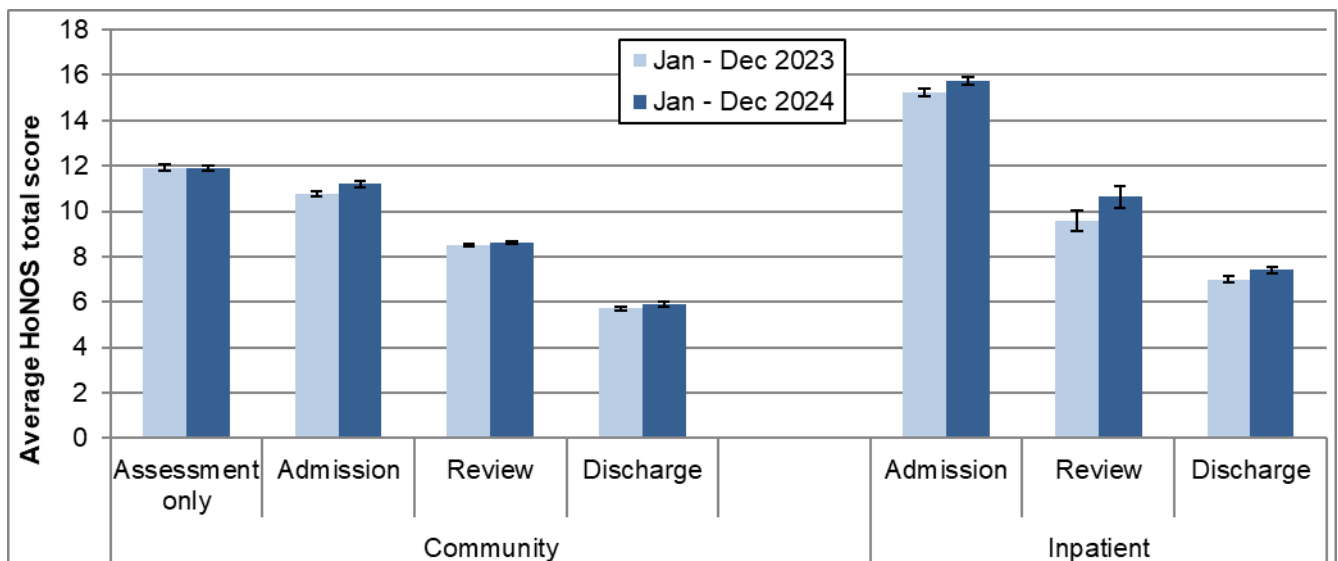
**PLEASE NOTE:**

For this period a few Te Whatu Ora Districts have incomplete data which will affect New Zealand totals.

# 1. Outcomes – changes in service user status

This section presents HoNOS data indicating the status of service users at different stages of their contact with Te Whatu Ora District mental health services. Graph and Table 1, and Graph 2 show results from HoNOS total scores. Graphs and Tables 3 to 5b show results related to the percentage of HoNOS items in the clinical range. Table 6 shows results from the Index of Severity derived from HoNOS scores.

**Graph 1: Average HoNOS total score (12 items) by collection type: New Zealand, Jan - Dec 2023 and Jan - Dec 2024**



**Notes:** Error bars indicate the confidence intervals around the data point. If error bars overlap, the data points are not significantly different. Community discharge does not include discharge to an inpatient unit.

**Interpretation:** Decrease between admission and discharge is an indication of the outcomes achieved by the service user and service. The greater the decrease between admission and discharge, and the lower the average HoNOS score at discharge, the more positive the outcome.

**Target:** A greater decrease from admission to discharge and lower average rating at discharge.

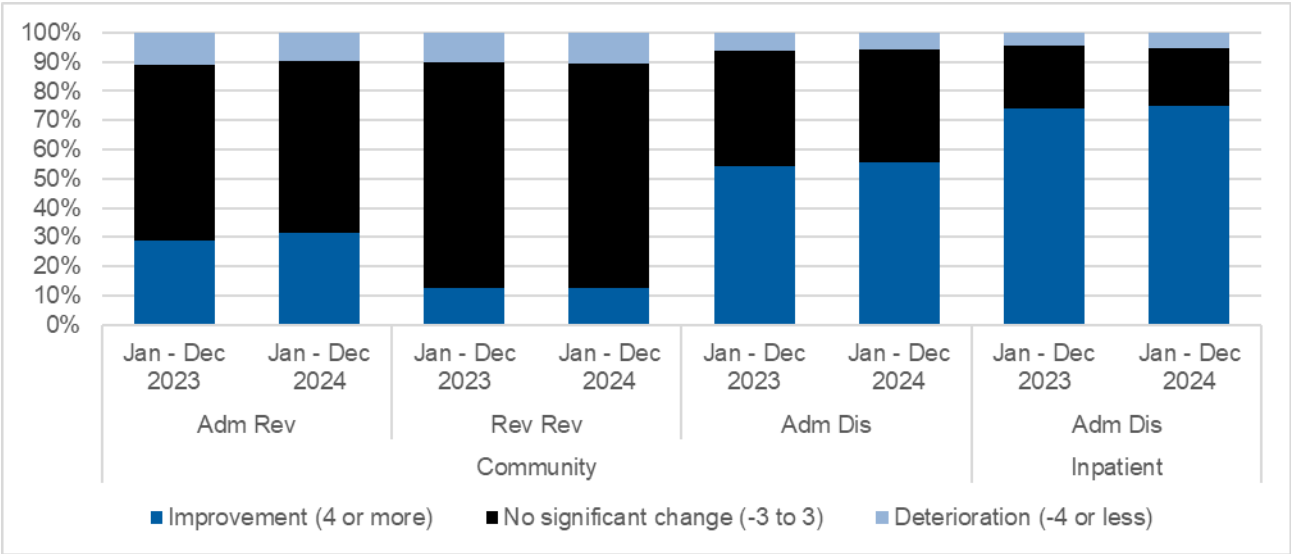
**Table 1: Average HoNOS total score (12 items), by collection type and team: New Zealand, Jan - Dec 2024**

Team type	Assessment only			Admission			Review			Discharge		
	N	Mean	CI	N	Mean	CI	N	Mean	CI	N	Mean	CI
<b>Community services</b>												
Alcohol and drug team	315	13.4	12.7-14.1	219	11.9	11.1-12.7	1,177	8.2	7.9-8.5	142	7.8	6.9-8.8
Child and youth team	45	10.1	8.6-11.6	44	11.8	10.2-13.3	234	10.4	9.5-11.2	61	5.9	4.9-7.0
Co-existing problem team							23	11.5	9.5-13.5			
Community team	8,774	12.0	11.9-12.1	7,623	11.4	11.2-11.5	29,679	8.5	8.4-8.6	5,386	6.0	5.8-6.1
Early intervention team				213	9.9	9.1-10.7	745	8.4	8.0-8.8	128	6.2	5.3-7.2
Eating disorders team	48	11.3	9.7-12.8	289	12.7	12.0-13.4	459	10.6	10.0-11.1	172	6.9	6.1-7.6
Forensic team				22	8.5	5.6-11.5	105	9.0	7.8-10.1	31	5.9	3.5-8.3
Kaupapa Māori team	54	11.6	9.4-13.8	269	11.3	10.5-12.1	1,975	10.0	9.8-10.3	158	7.2	6.2-8.1
Maternal mental health team	164	8.3	7.5-9.1	872	9.4	9.1-9.8	988	7.6	7.3-7.9	823	4.4	4.1-4.6
Needs assessment and service coordination team	86	12.9	11.8-14.0	42	11.0	9.2-12.8	725	11.2	10.7-11.6	23	13.2	9.9-16.5
Older people team				71	12.0	10.5-13.4	81	10.6	9.3-11.8	53	9.8	8.3-11.2
Pacific people team				174	9.9	9.0-10.8	903	7.1	6.7-7.4	87	5.3	4.2-6.3
Specialty team	497	11.2	10.7-11.7	75	13.9	12.6-15.2	328	11.6	10.8-12.3	26	10.6	7.7-13.5
<b>Total</b>	<b>10,048</b>	<b>11.9</b>	<b>11.8-12.0</b>	<b>9,924</b>	<b>11.2</b>	<b>11.1-11.3</b>	<b>37,439</b>	<b>8.6</b>	<b>8.6-8.7</b>	<b>7,095</b>	<b>5.9</b>	<b>5.8-6.0</b>
<b>Inpatient services</b>												
Alcohol and drug team				189	10.9	10.2-11.6				180	8.8	8.2-9.5
Eating disorders team				21	13.8	11.3-16.2						
Forensic team				30	12.0	9.6-14.5	146	11.3	10.5-12.2	43	3.8	2.7-5.0
Inpatient team				7,346	16.0	15.8-16.1	859	10.5	10.0-11.1	5,765	7.4	7.2-7.5
Maternal mental health team				89	11.4	10.1-12.7				57	7.4	6.2-8.7
Older people team				32	14.4	12.1-16.7						
<b>Total</b>				<b>7,709</b>	<b>15.8</b>	<b>15.6-15.9</b>	<b>1,024</b>	<b>10.6</b>	<b>10.2-11.1</b>	<b>6,080</b>	<b>7.4</b>	<b>7.3-7.6</b>

**Notes:** N = number of collections in period. Average = average HoNOS (12 item) score, CI = confidence interval for average score. Community discharge does not include discharge to an inpatient unit.

**Interpretation:** If confidence intervals for two scores do not overlap, then the scores have a statistically significant difference. It is important to note that statistical significance may not indicate a clinically significant difference.

**Graph 2: Difference in HoNOS total score (12 items) for matched pairs by pair type and setting, New Zealand, Jan - Dec 2023 and Jan - Dec 2024**



**Notes:** Shows the difference of the matched pair between the start and end HoNOS total score. Community admission to discharge includes discharge no further care and discharge other.

**Interpretation:** The graphs compare two time periods. Dark blue band indicates percentage improvement within the given time period, while black band indicates no significant change and light blue deterioration. Improvement = 4 or more, no significant change = -3 to 3 and deterioration = -4 or less.

**Target:** A greater percentage increase in improvement for both community and inpatient settings and a smaller percentage in deterioration.

**Table 2: Difference in HoNOS total score (12 items) for matched pairs by pair type and team, community New Zealand, Jan - Dec 2024**

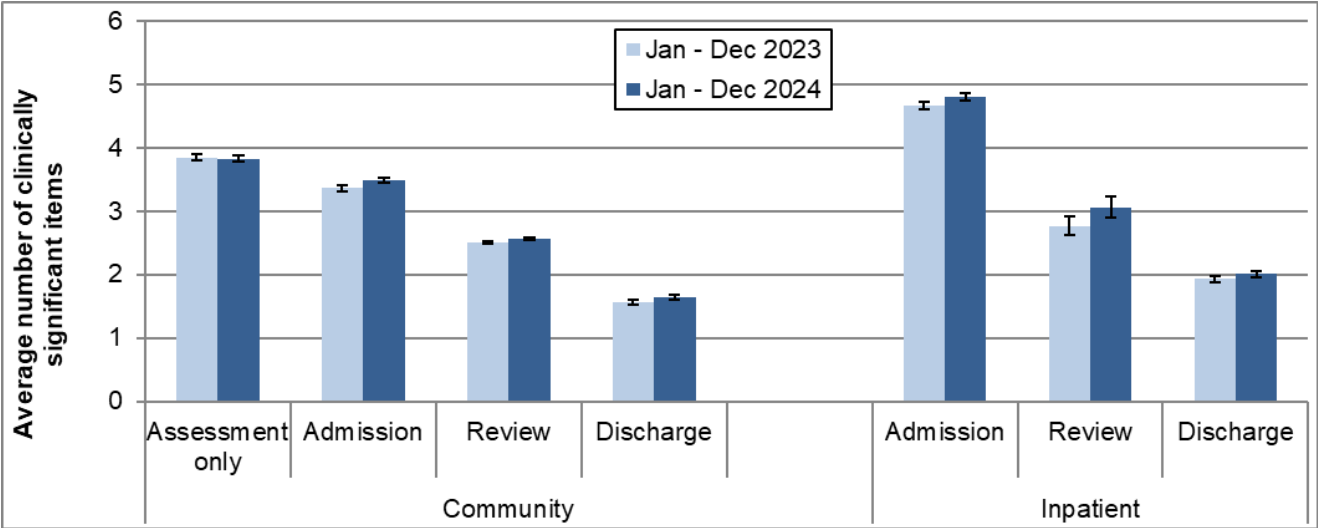
Team Type	Com Adm Rev				Com Rev Rev				Com Adm Dis			
	↓ Det	No SC	↑ Imp	N	↓ Det	No SC	↑ Imp	N	↓ Det	No SC	↑ Imp	N
Alcohol and drug team	3%	65%	32%	37	11%	72%	16%	385	9%	47%	43%	53
Child and youth team					6%	76%	18%	71				
Community team	10%	58%	32%	1,667	10%	78%	12%	11,788	6%	38%	56%	2,301
Early intervention team	4%	60%	36%	70	11%	70%	18%	260	5%	32%	63%	78
Eating disorders team	14%	54%	32%	57	11%	79%	10%	121	3%	41%	56%	98
Forensic team					14%	62%	24%	37				
Kaupapa Māori team	16%	59%	25%	85	14%	73%	13%	1,026	9%	50%	41%	80
Maternal mental health team	6%	65%	29%	228	5%	78%	18%	303	2%	35%	63%	422
Needs assessment and service coordination team					6%	84%	10%	134				
Older people team					8%	80%	12%	25	9%	53%	38%	32
Pacific people team	16%	53%	32%	57	14%	71%	15%	399	8%	51%	42%	53
Specialty team					15%	71%	14%	100				
<b>Total</b>	<b>10%</b>	<b>59%</b>	<b>32%</b>	<b>2,236</b>	<b>10%</b>	<b>77%</b>	<b>13%</b>	<b>14,658</b>	<b>6%</b>	<b>39%</b>	<b>56%</b>	<b>3,145</b>

**Notes:** Shows the difference of the matched pair between the start and end HoNOS total score. Community admission to discharge includes discharge no further care and discharge other.

**Interpretation:** Improvement (↑Imp) = 4 or more, no significant change (No SC) = -3 to 3 and deterioration (↓Det) = -4 or less.

**Target:** A greater percentage increase in improvement for community setting and a smaller percentage in deterioration.

Graph 3: Average number of clinically significant HoNOS items by collection type: New Zealand, Jan - Dec 2023 and Jan - Dec 2024



**Notes:** Average number clinically significant items = the average number of items in the clinical range (2, 3 or 4) per collection. Community discharge does not include discharge to an inpatient unit.

**Interpretation:** Points are significantly different if error bars don't overlap. A decrease between admission and discharge is an indication of the outcomes achieved by the service and service user. A greater decrease between admission and discharge indicates a better outcome. A lower admission score could be indication of service users seeking out and being engaged by services at a lower level of severity.

**Target:** A greater decrease from admission to discharge and smaller percentage in clinical range at discharge

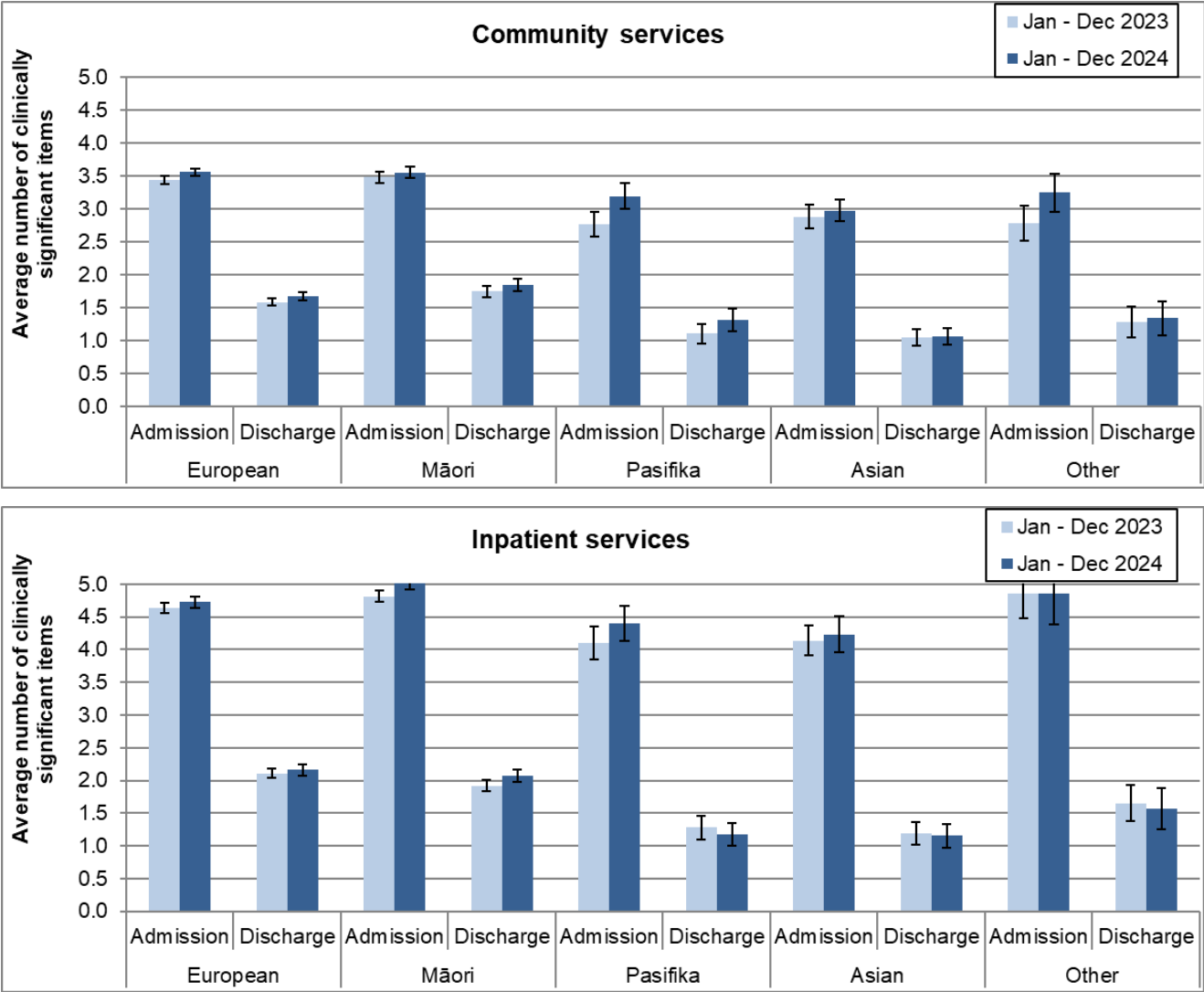
**Table 3: Average number of clinically significant HoNOS items by collection type and team: New Zealand, Jan - Dec 2024**

Team type	Assessment only			Admission			Review			Discharge		
	N	Mean	CI	N	Mean	CI	N	Mean	CI	N	Mean	CI
<b>Community services</b>												
Alcohol and drug team	315	4.4	4.1-4.6	219	3.6	3.3-3.9	1,177	2.5	2.4-2.6	142	2.2	1.9-2.6
Child and youth team	45	3.2	2.6-3.7	44	3.6	3.1-4.2	234	3.2	2.9-3.6	61	1.6	1.2-2.0
Co-existing problem team							23	3.5	2.7-4.3			
Community team	8,774	3.9	3.8-3.9	7,623	3.5	3.5-3.6	29,679	2.5	2.5-2.5	5,386	1.7	1.6-1.7
Early intervention team				213	3.2	2.8-3.5	745	2.6	2.4-2.7	128	1.8	1.4-2.1
Eating disorders team	48	3.5	2.9-4.1	289	3.9	3.6-4.1	459	3.2	3.0-3.4	172	1.9	1.6-2.1
Forensic team				22	2.1	1.1-3.1	105	2.5	2.1-3.0	31	1.9	1.0-2.8
Kaupapa Māori team	54	3.6	2.8-4.3	269	3.3	3.0-3.6	1,975	2.9	2.8-3.0	158	1.9	1.6-2.3
Maternal mental health team	164	2.7	2.4-3.0	872	3.0	2.9-3.1	988	2.3	2.2-2.4	823	1.1	1.0-1.2
Needs assessment and service coordination team	86	4.1	3.6-4.6	42	3.2	2.5-3.9	725	3.5	3.3-3.7	23	3.9	2.7-5.1
Older people team				71	3.8	3.3-4.4	81	3.1	2.7-3.6	53	2.8	2.3-3.3
Pacific people team				174	3.1	2.8-3.5	903	2.0	1.8-2.1	87	1.4	1.1-1.7
Specialty team	497	3.4	3.2-3.6	75	4.4	3.9-4.9	328	3.8	3.5-4.1	26	3.1	2.0-4.1
<b>Total</b>	<b>10,048</b>	<b>3.8</b>	<b>3.8-3.9</b>	<b>9,924</b>	<b>3.5</b>	<b>3.4-3.5</b>	<b>37,439</b>	<b>2.6</b>	<b>2.5-2.6</b>	<b>7,095</b>	<b>1.6</b>	<b>1.6-1.7</b>
<b>Inpatient services</b>												
Alcohol and drug team				189	3.0	2.7-3.2				180	2.6	2.4-2.8
Eating disorders team				21	4.2	3.3-5.1						
Forensic team				30	3.5	2.6-4.5	146	3.6	3.2-4.0	43	0.7	0.4-1.1
Inpatient team				7,346	4.9	4.8-4.9	859	3.0	2.8-3.2	5,765	2.0	1.9-2.0
Maternal mental health team				89	3.4	3.0-3.9				57	2.2	1.7-2.7
Older people team				32	4.2	3.4-5.0						
<b>Total</b>				<b>7,709</b>	<b>4.8</b>	<b>4.7-4.9</b>	<b>1,024</b>	<b>3.1</b>	<b>2.9-3.2</b>	<b>6,080</b>	<b>2.0</b>	<b>1.9-2.1</b>

**Notes:** N = number of collections in period. Average = average number of HoNOS items in the clinically significant range (ie scoring 2, 3, or 4). CI = confidence interval for average score. Community discharge does not include discharge to an inpatient unit. **Interpretation:** If confidence intervals for two scores do not overlap, then the scores have a statistically significant difference. It is important to note that statistical significance may not indicate a clinically significant difference



Graph 4: Average number of clinically significant HoNOS items at admission and discharge by ethnic group: New Zealand, Jan - Dec 2023 and Jan - Dec 2024

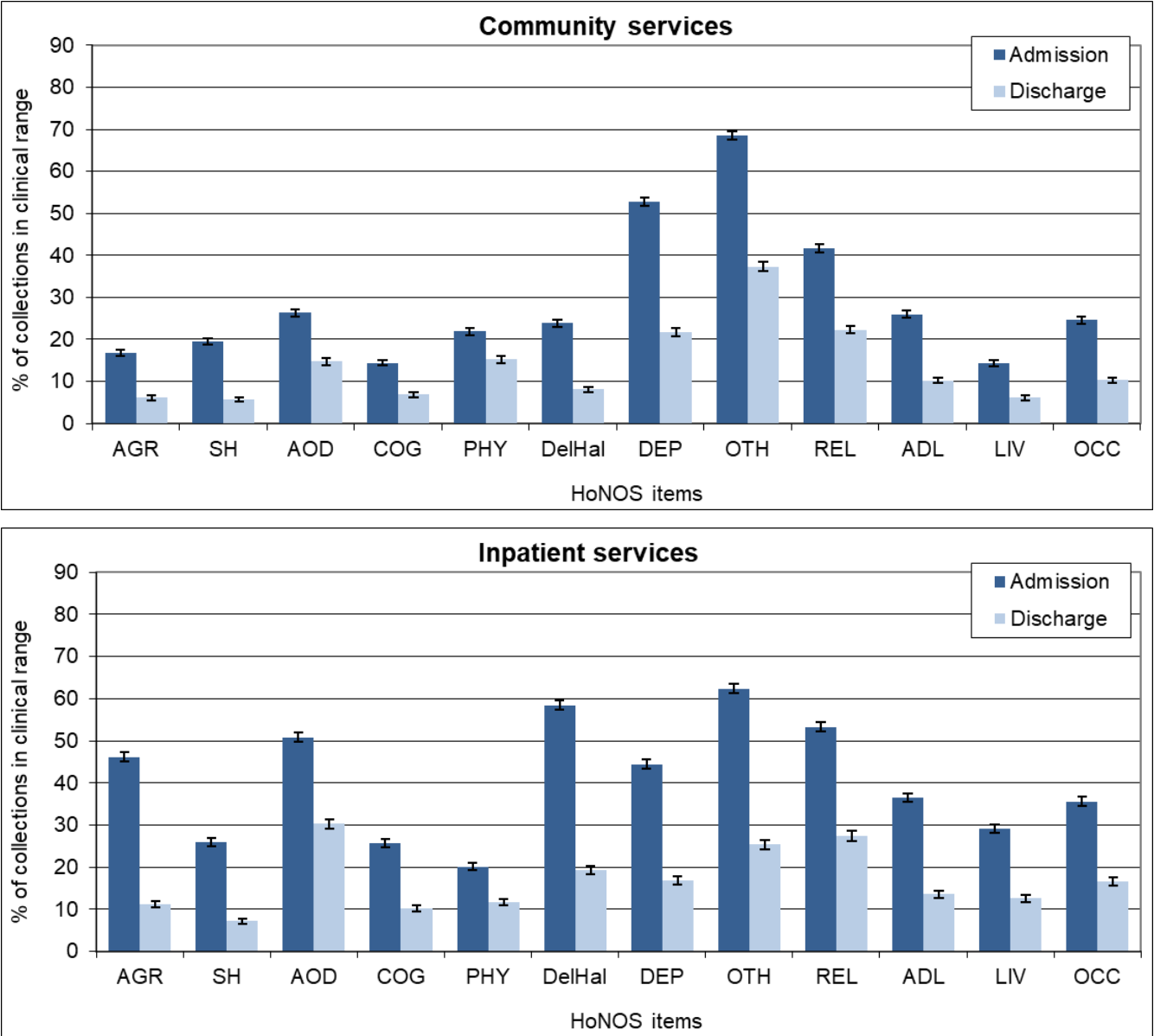


**Notes:** Average number of HoNOS items in the clinical range (2, 3 or 4). Community discharge does not include discharge to an inpatient unit.

**Interpretation:** Points are significantly different if error bars don't overlap. Decrease between admission and discharge is an indication of the outcomes achieved by the service and service user. A greater decrease between admission and discharge indicates a better outcome. A lower admission score could be indication of service users seeking out and being engaged by services at a lower level of acuity.

**Target:** A greater decrease from admission to discharge and smaller percentage in clinical range at discharge.

Graph 5a: Percentage of collections in clinical range on each HoNOS item (admission and discharge collections): New Zealand, Jan - Dec 2024



**Notes:** Percentage of service users in the clinical range (2, 3 or 4) for each HoNOS item. Community discharge does not include discharge to an inpatient unit.

**Interpretation:** The longer the bar, the more prevalent the difficulty measured by the item is amongst service users. A greater decrease in the length of the bar from admission to discharge suggests a better outcome for the difficulty measured by the item. Items that show medium to high frequency and less change may suggest possible targets for service improvement.

**Target:** A greater decrease from admission to discharge and smaller percentage in clinical range at discharge.

**Table 5a: Percentage of collections in clinical range on each HoNOS item (admission and discharge collections) by team: New Zealand Jan - Dec 2024**

**Community services**

<b>First 6 HoNOS items</b>														
<b>Team type</b>	<b>N</b>		<b>AGR</b>		<b>SH</b>		<b>AOD</b>		<b>COG</b>		<b>PHY</b>		<b>DelHal</b>	
	<b>Adm</b>	<b>Disch</b>	<b>Adm</b>	<b>Disch</b>	<b>Adm</b>	<b>Disch</b>	<b>Adm</b>	<b>Disch</b>	<b>Adm</b>	<b>Disch</b>	<b>Adm</b>	<b>Disch</b>	<b>Adm</b>	<b>Disch</b>
Alcohol and drug team	219	142	18%	8%	12%	2%	62%	45%	11%	7%	21%	17%	14%	4%
Child and youth team	44	61	27%	2%	48%	2%	30%	7%	2%	3%	16%	25%	12%	0%
Community team	7,613	5,378	17%	6%	21%	6%	27%	15%	14%	6%	22%	16%	25%	9%
Early intervention team	213	128	19%	6%	10%	4%	33%	26%	19%	12%	8%	6%	51%	14%
Eating disorders team	289	172	9%	2%	16%	9%	13%	9%	23%	6%	45%	20%	11%	1%
Forensic team	22	31	14%	10%	5%	6%	27%	23%	9%	6%	0%	6%	23%	3%
Kaupapa Māori team	269	158	15%	7%	14%	6%	34%	18%	13%	10%	21%	19%	34%	12%
Maternal mental health team	872	823	12%	5%	13%	3%	7%	5%	11%	4%	18%	7%	4%	1%
Needs assessment and service coordination team	42	23	12%	17%	10%	4%	32%	30%	29%	35%	17%	39%	33%	32%
Older people team	71	53	31%	17%	3%	0%	7%	4%	66%	72%	45%	42%	27%	13%
Pacific people team	174	87	13%	7%	15%	2%	27%	15%	20%	6%	21%	14%	40%	17%
Specialty team	75	26	37%	19%	21%	8%	47%	20%	21%	15%	29%	23%	27%	19%
<b>Total</b>	<b>9,910</b>	<b>7,086</b>	<b>17%</b>	<b>6%</b>	<b>19%</b>	<b>6%</b>	<b>26%</b>	<b>15%</b>	<b>14%</b>	<b>7%</b>	<b>22%</b>	<b>15%</b>	<b>24%</b>	<b>8%</b>

Second 6 HoNOS items												
Team type	DEP		OTH		REL		ADL		LIV		OCC	
	Adm	Disch	Adm	Disch	Adm	Disch	Adm	Disch	Adm	Disch	Adm	Disch
Alcohol and drug team	41%	24%	60%	40%	46%	31%	23%	9%	24%	17%	31%	18%
Child and youth team	70%	20%	73%	48%	48%	30%	18%	13%	16%	2%	12%	10%
Community team	52%	22%	67%	36%	42%	22%	26%	10%	15%	6%	26%	11%
Early intervention team	35%	13%	48%	30%	42%	30%	24%	20%	10%	6%	19%	10%
Eating disorders team	63%	35%	97%	65%	41%	19%	38%	10%	9%	2%	22%	7%
Forensic team	9%	16%	18%	26%	32%	39%	23%	13%	18%	17%	32%	27%
Kaupapa Māori team	41%	20%	55%	34%	44%	31%	28%	12%	14%	8%	22%	13%
Maternal mental health team	73%	18%	90%	42%	36%	18%	20%	4%	10%	4%	10%	3%
Needs assessment and service coordination team	19%	26%	40%	52%	36%	39%	40%	61%	23%	13%	29%	43%
Older people team	30%	10%	42%	15%	24%	28%	58%	66%	15%	2%	34%	11%
Pacific people team	32%	8%	45%	21%	43%	25%	26%	9%	15%	9%	19%	7%
Specialty team	55%	31%	63%	46%	47%	50%	31%	27%	23%	12%	40%	38%
<b>Total</b>	<b>53%</b>	<b>22%</b>	<b>69%</b>	<b>37%</b>	<b>42%</b>	<b>22%</b>	<b>26%</b>	<b>10%</b>	<b>14%</b>	<b>6%</b>	<b>25%</b>	<b>10%</b>

## Inpatient services

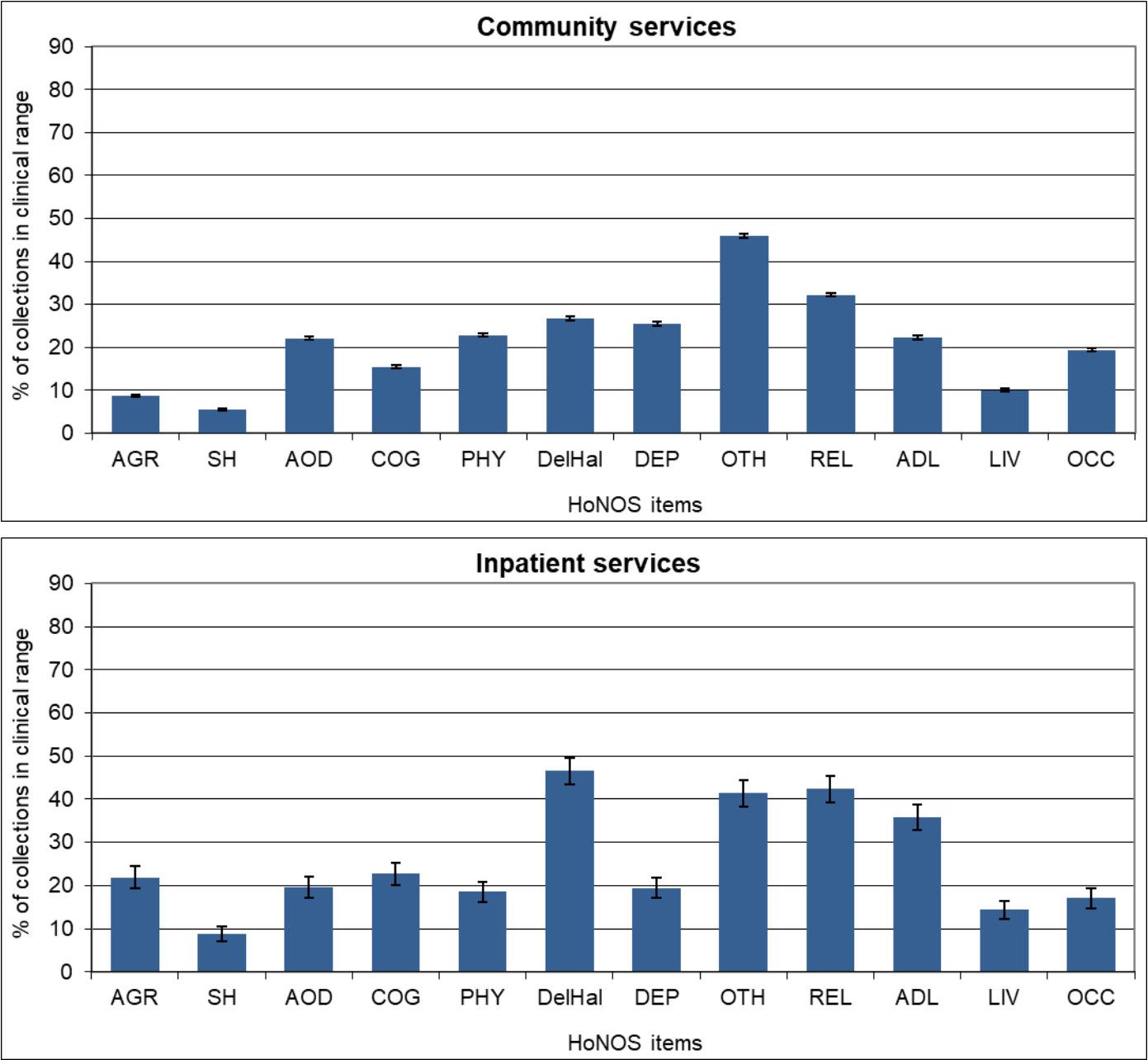
First 6 HoNOS items														
Team type	N		AGR		SH		AOD		COG		PHY		DelHal	
	Adm	Disch	Adm	Disch	Adm	Disch	Adm	Disch	Adm	Disch	Adm	Disch	Adm	Disch
Alcohol and drug team	189	180	8%	13%	6%	2%	99%	99%	8%	9%	37%	30%	5%	3%
Eating disorders team	21		24%		5%		5%		24%		67%		0%	
Forensic team	30	43	33%	2%	3%	0%	30%	19%	33%	5%	23%	2%	63%	16%
Inpatient team	7,328	5,761	48%	11%	27%	7%	50%	29%	26%	10%	19%	11%	60%	20%
Maternal mental health team	89	57	19%	11%	15%	9%	17%	9%	11%	11%	21%	9%	26%	7%
Older people team	32		53%		3%		10%		68%		47%		41%	
<b>Total</b>	<b>7,691</b>	<b>6,076</b>	<b>46%</b>	<b>11%</b>	<b>26%</b>	<b>7%</b>	<b>51%</b>	<b>30%</b>	<b>26%</b>	<b>10%</b>	<b>20%</b>	<b>12%</b>	<b>58%</b>	<b>19%</b>
Second 6 HoNOS items														
Team type	DEP		OTH		REL		ADL		LIV		OCC			
	Adm	Disch	Adm	Disch	Adm	Disch	Adm	Disch	Adm	Disch	Adm	Disch		
Alcohol and drug team	44%	36%	44%	47%	19%	12%	9%	6%	15%	6%	41%	17%		
Eating disorders team	71%		100%		29%		52%		5%		38%			
Forensic team	10%	2%	47%	9%	34%	12%	27%	2%	23%	0%	28%	5%		
Inpatient team	44%	16%	63%	24%	54%	28%	37%	14%	30%	13%	36%	17%		
Maternal mental health team	64%	40%	75%	51%	45%	30%	31%	19%	8%	13%	14%	14%		
Older people team	23%		56%		34%		56%		13%		21%			
<b>Total</b>	<b>44%</b>	<b>17%</b>	<b>62%</b>	<b>25%</b>	<b>53%</b>	<b>27%</b>	<b>37%</b>	<b>14%</b>	<b>29%</b>	<b>13%</b>	<b>36%</b>	<b>17%</b>		

**Notes:** Percentage of service users in the clinical range (2, 3 or 4) for each HoNOS item. Community discharge does not include discharges to an inpatient unit.

**Interpretation:** The higher the percentage, the more prevalent the difficulty measured by the item is amongst service users. A greater decrease between admission and discharge suggests a better outcome for the difficulty measured by the item. Items that show medium to high frequency and less change may suggest possible targets for service improvement.

**Target:** A greater decrease from admission to discharge and smaller percentage in clinical range at discharge.

Graph 5b: Percentage of collections in clinical range on each HoNOS item (review collections): New Zealand, Jan - Dec 2024



**Notes:** Percentage of service users in the clinical range (2, 3 or 4) for each HoNOS item on review collections. Due to most admission being less than 91 days, the data set for review collections in inpatient settings is relatively small.

**Interpretation:** The longer the bar, the more prevalent the difficulty measured by the item is amongst service users.

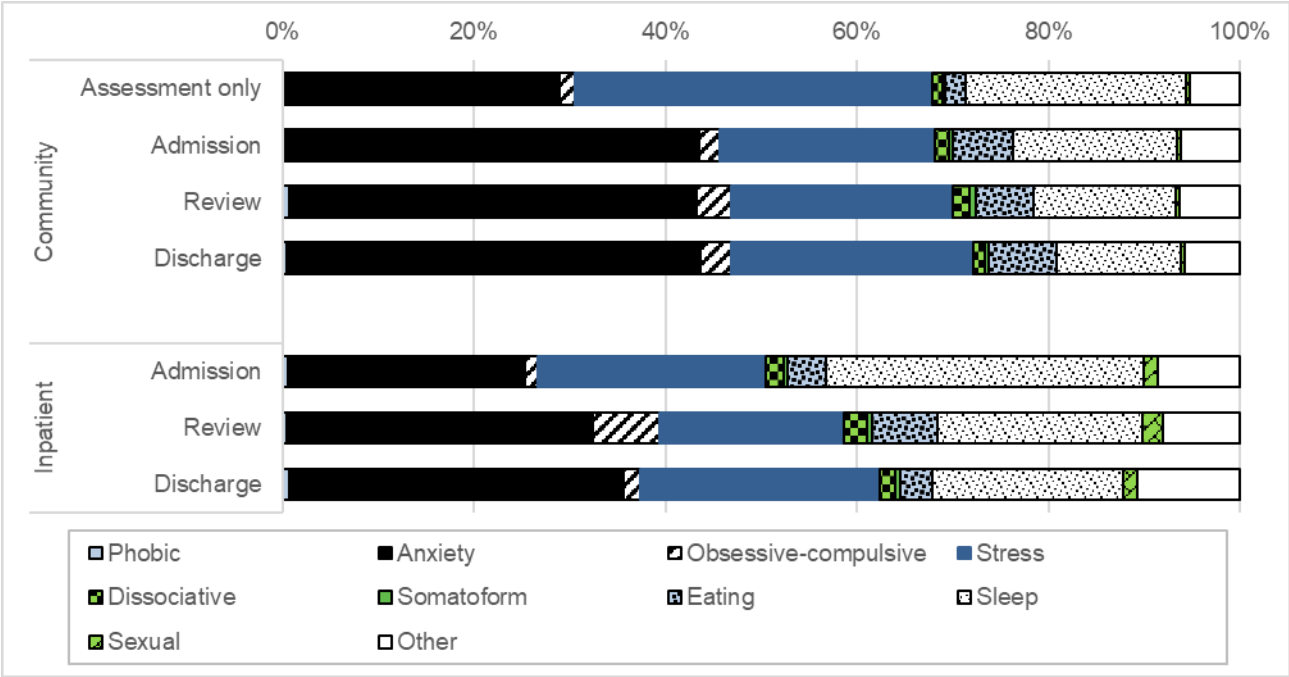
**Table 5b: Percentage of collections in clinical range on each HoNOS item (review collections) by team: New Zealand, Jan - Dec 2024**

Team type	N	AGR	SH	AOD	COG	PHY	DeIHaI	DEP	OTH	REL	ADL	LIV	OCC
<b>Community services</b>													
Alcohol and drug team	1,177	7%	3%	41%	12%	26%	16%	21%	41%	28%	20%	10%	23%
Child and youth team	234	16%	19%	15%	22%	22%	20%	44%	61%	44%	23%	15%	24%
Co-existing problem team	23	13%	4%	87%	9%	23%	22%	65%	52%	35%	17%	9%	13%
Community team	29,670	9%	5%	22%	15%	22%	27%	25%	45%	32%	21%	10%	19%
Early intervention team	745	8%	3%	31%	20%	10%	32%	24%	41%	35%	26%	8%	21%
Eating disorders team	459	7%	13%	11%	17%	39%	11%	48%	87%	38%	31%	5%	16%
Forensic team	105	11%	1%	34%	12%	12%	32%	11%	37%	42%	21%	13%	27%
Kaupapa Māori team	1,975	11%	7%	28%	21%	27%	32%	24%	41%	34%	26%	14%	24%
Maternal mental health team	988	7%	5%	4%	7%	16%	4%	49%	80%	35%	11%	9%	7%
Needs assessment and service coordination team	725	12%	7%	25%	34%	29%	47%	23%	48%	42%	42%	14%	26%
Older people team	81	17%	0%	4%	70%	48%	15%	26%	31%	25%	54%	4%	19%
Pacific people team	903	5%	5%	19%	12%	17%	29%	14%	21%	25%	23%	12%	17%
Specialty team	328	12%	8%	24%	28%	44%	28%	38%	67%	44%	38%	17%	30%
<b>Total</b>	<b>37,427</b>	<b>9%</b>	<b>6%</b>	<b>22%</b>	<b>15%</b>	<b>23%</b>	<b>27%</b>	<b>26%</b>	<b>46%</b>	<b>32%</b>	<b>22%</b>	<b>10%</b>	<b>19%</b>
<b>Inpatient services</b>													
Forensic team	146	18%	6%	13%	34%	23%	70%	16%	56%	64%	47%	3%	8%
Inpatient team	858	22%	9%	21%	20%	18%	43%	20%	39%	39%	34%	17%	19%
<b>Total</b>	<b>1,023</b>	<b>22%</b>	<b>9%</b>	<b>20%</b>	<b>23%</b>	<b>19%</b>	<b>47%</b>	<b>19%</b>	<b>41%</b>	<b>42%</b>	<b>36%</b>	<b>14%</b>	<b>17%</b>

**Notes:** Percentage of service users in the clinical range (2, 3 or 4) for each HoNOS item on review collections. Due to most admission being less than 91 days, the data set for review collections in inpatient settings is relatively small.

**Interpretation:** The higher the percentage, the more prevalent the difficulty measured by the item is amongst service users.

**Graph 5c: Distribution of other mental health and behavioural problems in the clinical range by collection type: New Zealand, Jan - Dec 2024**



**Notes:** This is for service users in the clinical range (2, 3 or 4) for other mental health and behavioural problems item.

**Interpretation:** This shows the distribution of what is selected for other mental health and behavioural problems. Other mental health and behavioural problems provides clinicians with the opportunity to rate the most severe clinical problem not covered elsewhere from the following list: phobic, anxiety, obsessive-compulsive, stress, dissociative, somatoform, eating, sleep, sexual, other. Other conforms to an ICD or DSM classification. The most severe clinical problem can change for each collection.



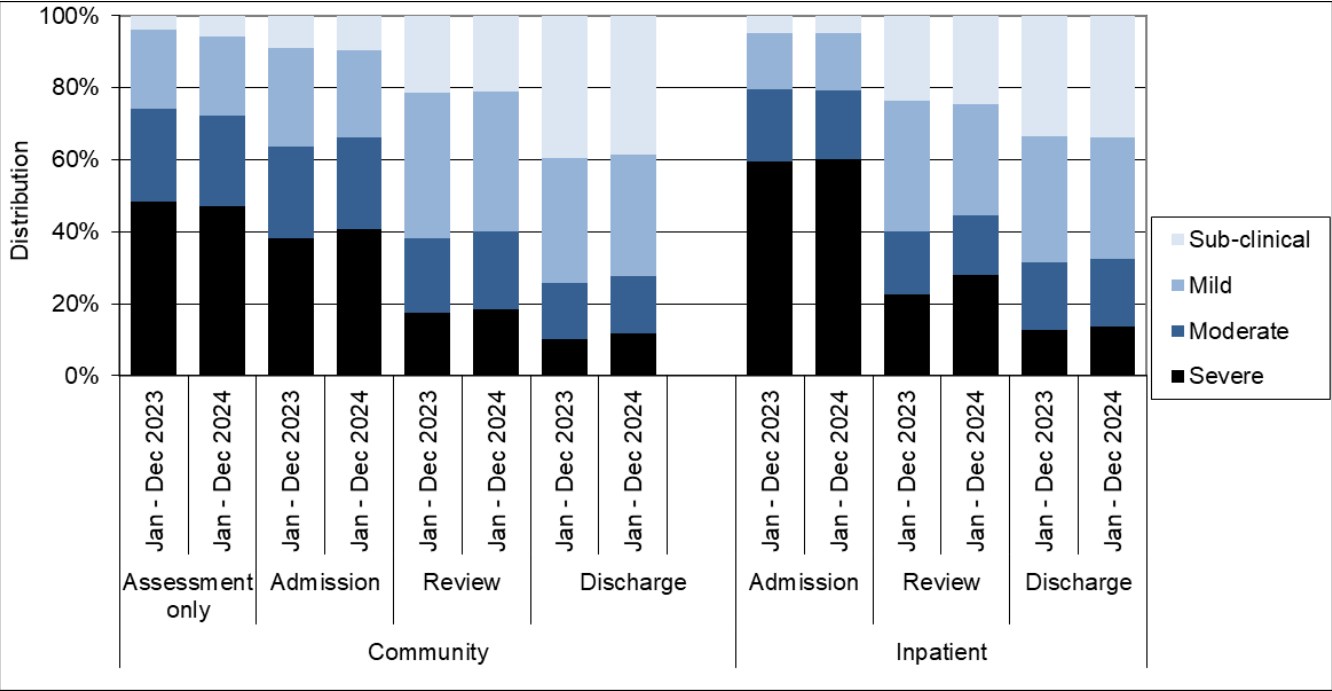
**Table 5c: Distribution of other mental health and behavioural problems in the clinical range (admission and review collections) by team: New Zealand, Jan - Dec 2024**

	Phobic	Anxiety	Obsessive-compulsive	Stress	Dissociative	Somatoform	Eating	Sleep	Sexual	Other	Number
<b>Community service</b>											
Alcohol and drug team	0%	36%	2%	37%	1%	0%	1%	18%	0%	3%	598
Child and youth team	3%	45%	13%	5%	1%	1%	9%	11%	1%	6%	163
Community team	1%	42%	3%	23%	2%	1%	4%	16%	0%	7%	18,288
Early intervention team	0%	55%	2%	12%	2%	0%	4%	17%	0%	5%	396
Eating disorders team	0%	12%	1%	2%	0%	0%	79%	3%	0%	2%	677
Forensic team	2%	17%	0%	21%	5%	2%	5%	26%	2%	19%	42
Kaupapa Māori team	1%	44%	1%	21%	2%	0%	4%	23%	1%	3%	942
Maternal mental health team	1%	61%	3%	23%	1%	0%	1%	5%	0%	4%	1,567
Needs assessment and service coordination team	0%	28%	5%	29%	1%	0%	5%	19%	1%	8%	355
Older people team	0%	51%	4%	9%	0%	0%	2%	20%	4%	11%	55
Pacific people team	0%	25%	3%	22%	3%	0%	3%	36%	1%	6%	263
Specialty team	0%	36%	2%	17%	1%	0%	21%	19%	0%	2%	263
<b>Total</b>	<b>1%</b>	<b>42%</b>	<b>3%</b>	<b>23%</b>	<b>2%</b>	<b>1%</b>	<b>6%</b>	<b>15%</b>	<b>0%</b>	<b>6%</b>	<b>23,639</b>
<b>Inpatient service</b>											
Alcohol and drug team	1%	84%	0%	5%	0%	0%	0%	1%	0%	8%	83
Eating disorders team	0%	9%	0%	0%	0%	0%	91%	0%	0%	0%	22
Forensic team	0%	55%	1%	15%	1%	0%	6%	16%	3%	3%	89
Inpatient team	1%	24%	2%	24%	2%	0%	4%	33%	1%	9%	4,707
Maternal mental health team	0%	49%	3%	17%	0%	0%	7%	14%	3%	6%	69
Older people team	5%	18%	0%	18%	5%	0%	0%	41%	0%	14%	22
<b>Total</b>	<b>1%</b>	<b>25%</b>	<b>2%</b>	<b>23%</b>	<b>2%</b>	<b>0%</b>	<b>4%</b>	<b>32%</b>	<b>1%</b>	<b>9%</b>	<b>4,994</b>

**Notes:** This is for admission and review collections. This is for service users in the clinical range (2, 3 or 4) for other mental health and behavioural problems item.

**Interpretation:** The shows the distribution of what is selected for other mental health and behavioural problems.

**Graph 6: Index of Severity ratings for HoNOS by collection type: New Zealand, Jan - Dec 2023 and Jan - Dec 2024**



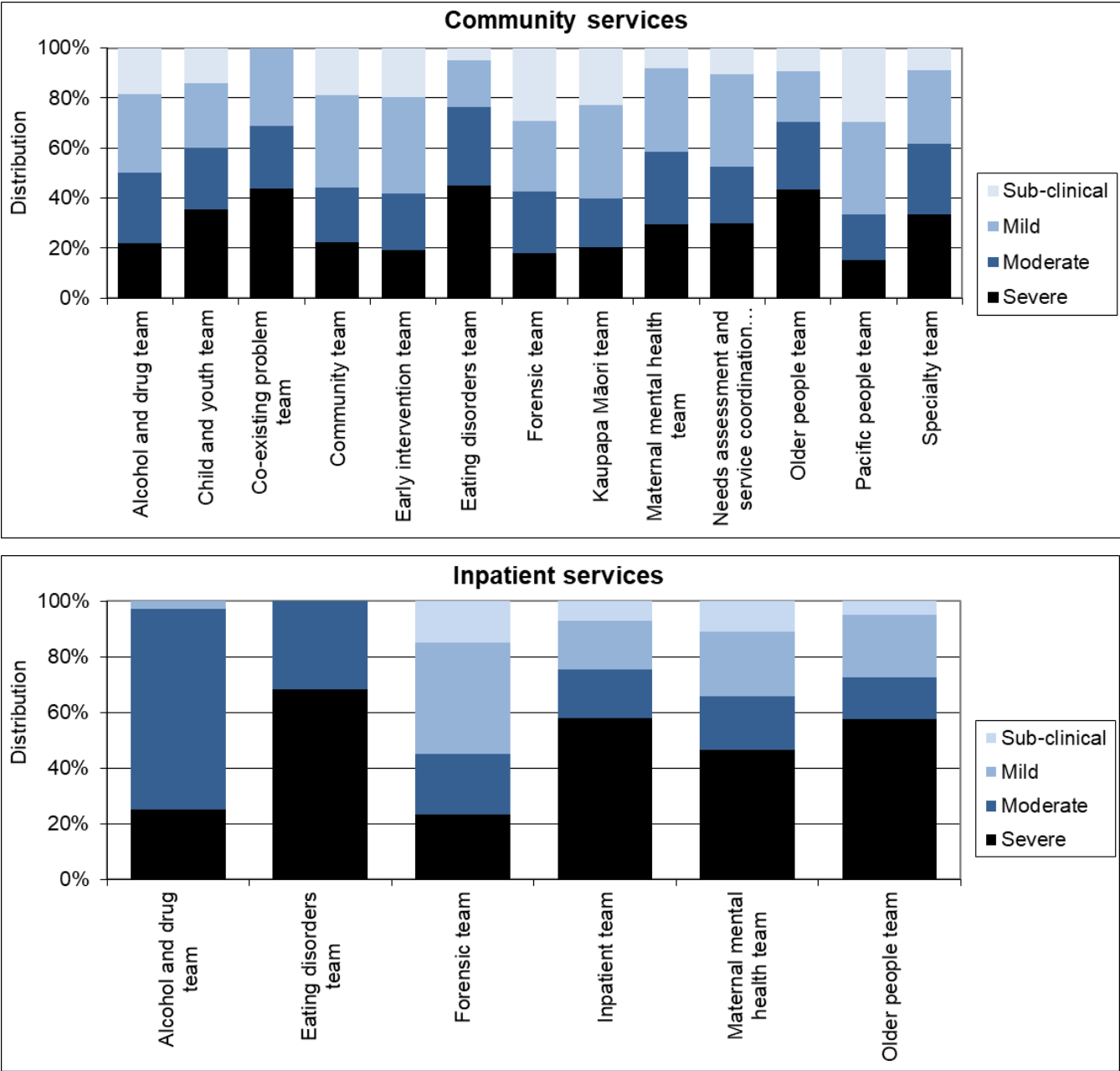
**Notes:** Community discharge does not include discharge to an inpatient unit. Index of Severity: Sub clinical = all items <2, mild = at least one item >1 and all items <3, moderate = at least one item >=3, severe = at least 2 items >=3 using first 10 items.

**Interpretation:** Darker bars indicate higher overall level of severity. More positive outcome is shown by larger decrease in darker sections of bar between admission and discharge.

## 2. Other measures of service activity

This section presents other information related to data collected in PRIMHD that may be helpful for understanding how teams are operating. This includes information relevant to caseload intensity and team activity.

**Graph 7: Index of Severity for HoNOS (admission and review collections) by team, New Zealand, Jan - Dec 2024**



**Notes:** Only data related to collection at admission and review is included so that results reflect the severity of service users during their engagement with the service. Index of Severity: Sub clinical = all items <2, mild = at least one item >1 and all items <3, moderate = at least one item >=3, severe = at least 2 items >=3 using first 10 items.

**Interpretation:** This graph gives an impression of the overall severity of the caseload for different teams at admission. The longer the darker bar, the higher the overall severity of the team's caseload.

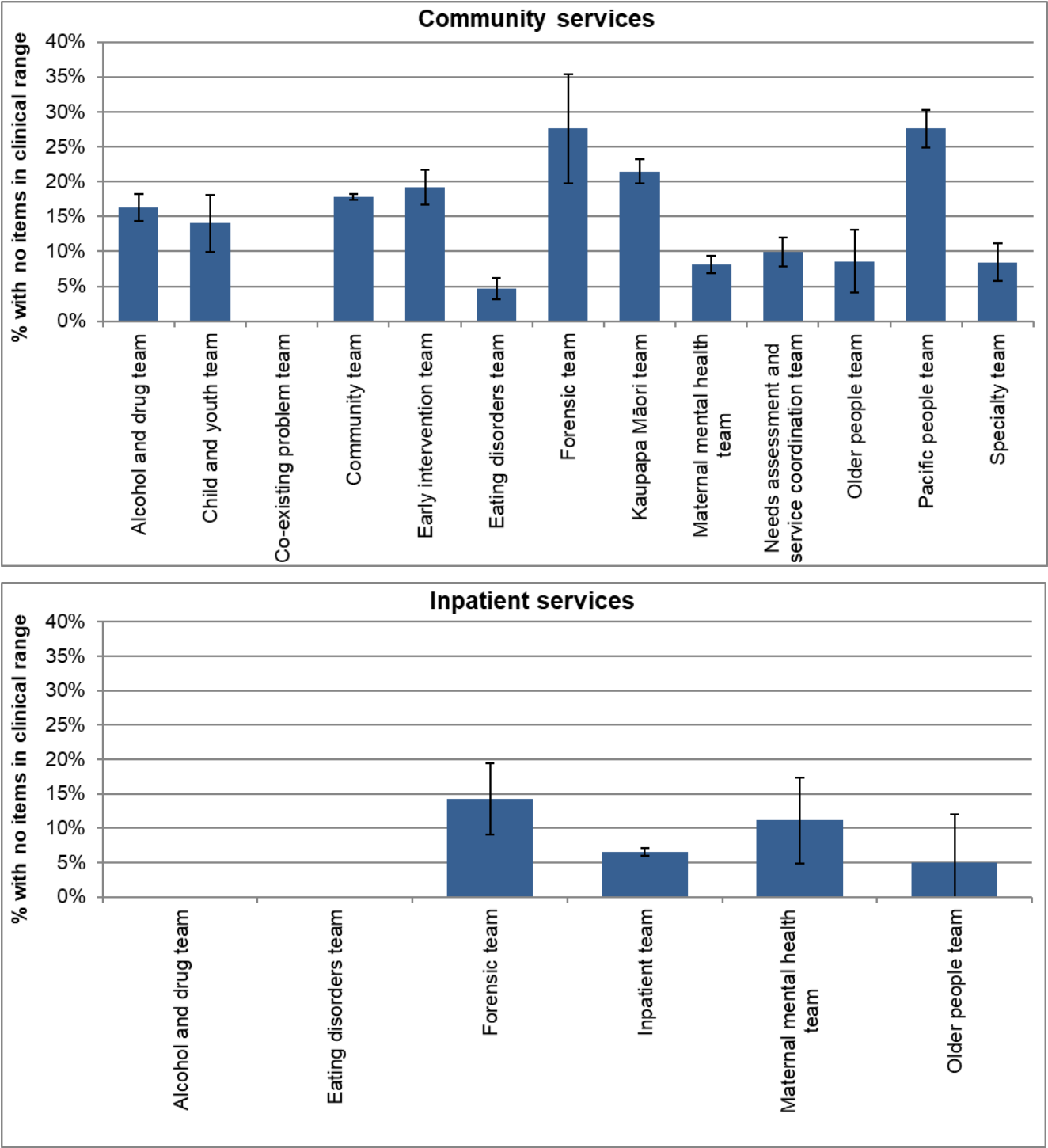
**Table 7: Index of Severity for HoNOS by collection type and team: New Zealand, Jan - Dec 2024**

Team type	Assessment only					Admission					Review					Discharge				
	Sub	Mild	Mod	Sev	N	Sub	Mild	Mod	Sev	N	Sub	Mild	Mod	Sev	N	Sub	Mild	Mod	Sev	N
<b>Community services</b>																				
Alcohol and drug team	7%	12%	25%	57%	315	11%	16%	36%	38%	219	20%	35%	27%	19%	1,177	27%	28%	30%	15%	142
Child and youth team	7%	38%	13%	42%	45	5%	16%	18%	61%	44	16%	28%	26%	31%	234	33%	38%	20%	10%	61
Co-existing problem team											0%	26%	26%	48%	23					
Community team	5%	22%	25%	48%	8,774	10%	25%	24%	41%	7,623	21%	40%	21%	18%	29,679	38%	34%	16%	11%	5,386
Early intervention team						14%	36%	23%	27%	213	21%	39%	23%	17%	745	34%	36%	16%	15%	128
Eating disorders team	2%	21%	40%	38%	48	1%	8%	36%	55%	289	8%	25%	29%	39%	459	28%	26%	25%	20%	172
Forensic team						50%	9%	18%	23%	22	25%	32%	26%	17%	105	55%	19%	6%	19%	31
Kaupapa Māori team	13%	30%	28%	30%	54	17%	30%	20%	32%	269	24%	38%	20%	18%	1,975	39%	34%	13%	14%	158
Maternal mental health team	12%	35%	25%	27%	164	4%	24%	33%	40%	872	12%	41%	26%	20%	988	46%	35%	12%	7%	823
Needs assessment and service coordination team	5%	38%	13%	44%	86	17%	36%	17%	31%	42	10%	37%	23%	30%	725	13%	22%	17%	48%	23
Older people team						3%	18%	34%	45%	71	15%	22%	21%	42%	81	13%	19%	15%	53%	53
Pacific people team						13%	38%	22%	28%	174	33%	37%	18%	13%	903	39%	38%	15%	8%	87
Specialty team	7%	23%	32%	38%	497	3%	21%	23%	53%	75	10%	31%	30%	29%	328	19%	31%	23%	27%	26
<b>Total</b>	<b>6%</b>	<b>22%</b>	<b>25%</b>	<b>47%</b>	<b>10,048</b>	<b>9%</b>	<b>24%</b>	<b>25%</b>	<b>41%</b>	<b>9,924</b>	<b>21%</b>	<b>39%</b>	<b>22%</b>	<b>18%</b>	<b>37,439</b>	<b>39%</b>	<b>34%</b>	<b>16%</b>	<b>12%</b>	<b>7,095</b>
<b>Inpatient service</b>																				
Alcohol and drug team						0%	3%	72%	25%	189						1%	8%	73%	18%	180
Eating disorders team						0%	0%	33%	67%	21										
Forensic team						20%	27%	23%	30%	30	14%	43%	21%	22%	146	56%	37%	5%	2%	43
Inpatient team						5%	16%	18%	61%	7,346	26%	29%	16%	29%	859	35%	35%	17%	14%	5,765
Maternal mental health team						8%	21%	21%	49%	89						25%	47%	18%	11%	57
Older people team						3%	22%	16%	59%	32										
<b>Total</b>						<b>5%</b>	<b>16%</b>	<b>19%</b>	<b>60%</b>	<b>7,709</b>	<b>24%</b>	<b>31%</b>	<b>17%</b>	<b>28%</b>	<b>1,024</b>	<b>34%</b>	<b>34%</b>	<b>19%</b>	<b>14%</b>	<b>6,080</b>

**Notes:** Sub = sub clinical, Mild = mild, Mod = moderate, Sev = severe on Index of Severity. Only admission collection data is included so that results reflect the severity of service users during their engagement with the service. Index of Severity: Sub clinical = all items <2, mild = at least one item >1 and all items <3, moderate = at least one item >=3, severe = at least 2 items >=3 using first 10 items. Community discharge does not include discharge to an inpatient unit.

**Interpretation:** Larger percentages in the columns to the right for each type of collection, the higher the overall severity of the team's caseload.

Graph 8: Collections with no HoNOS items in clinical range: New Zealand, Jan - Dec 2024



**Notes:** Includes admission and review collections. Shows percentage of service users with all HoNOS items less than two, ie no HoNOS items in the clinical range.

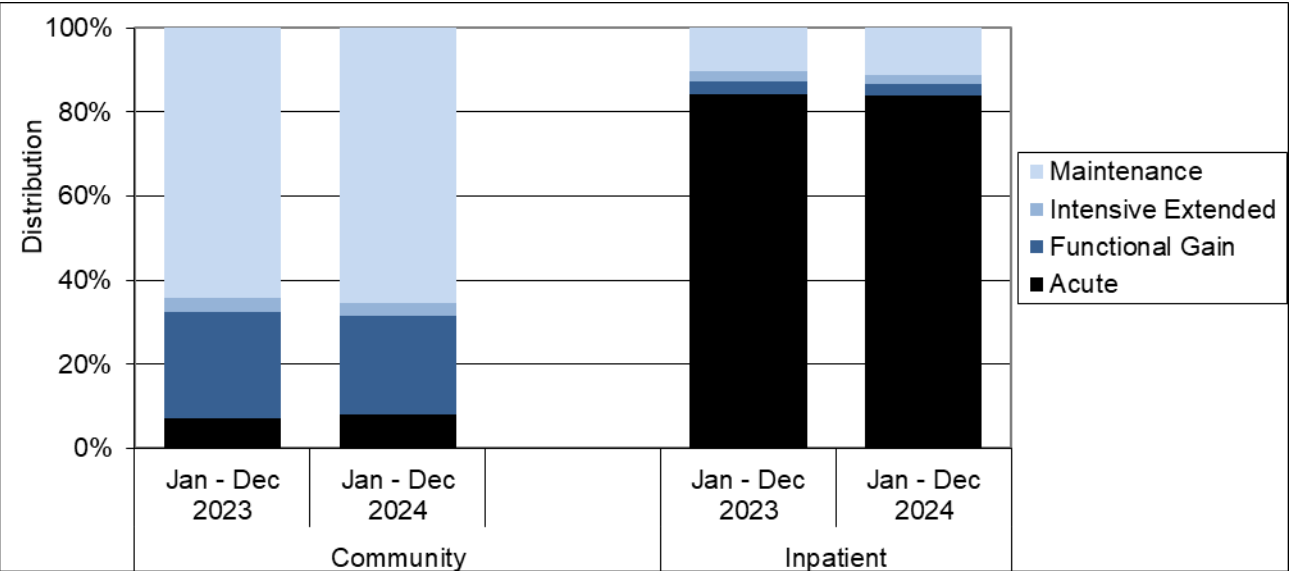
**Interpretation:** There are a variety of reasons that may make it appropriate for service users to remain in the service even though they show no HoNOS items in the clinical range. However, teams showing a larger or substantial percentage of service users with no HoNOS items in the clinical range could benefit from reviewing these cases to ensure that the service remains appropriate for this service user.

**Table 8: Collections with no HoNOS items in clinical range: New Zealand, Jan - Dec 2024**

Team type	Number of collections with no items in clinical range	Percentage with no items in clinical range
<b>Community services</b>		
Alcohol and drug team	227	16%
Child and youth team	39	14%
Co-existing problem team	0	0%
Community team	6,631	18%
Early intervention team	184	19%
Eating disorders team	35	5%
Forensic team	35	28%
Kaupapa Māori team	481	21%
Maternal mental health team	152	8%
Needs assessment and service coordination team	76	10%
Older people team	13	9%
Pacific people team	297	28%
Specialty team	34	8%
<b>Total</b>	<b>8,208</b>	<b>17%</b>
<b>Inpatient services</b>		
Alcohol and drug team	0	0%
Eating disorders team	0	0%
Forensic team	25	14%
Inpatient team	539	7%
Maternal mental health team	11	11%
Older people team	2	5%
<b>Total</b>	<b>577</b>	<b>7%</b>

**Notes:** For further information see notes for graph 8.

Graph 9: Focus of care categories: New Zealand, Jan - Dec 2023 and Jan - Dec 2024



**Notes:** Data from review and discharge collections.

**Interpretation:** Darker bars indicate more intensive involvement in care, so a longer, darker bar in general suggests more intensive working. A longer functional gain bar and shorter maintenance bar potentially suggests more recovery focused ways of working.

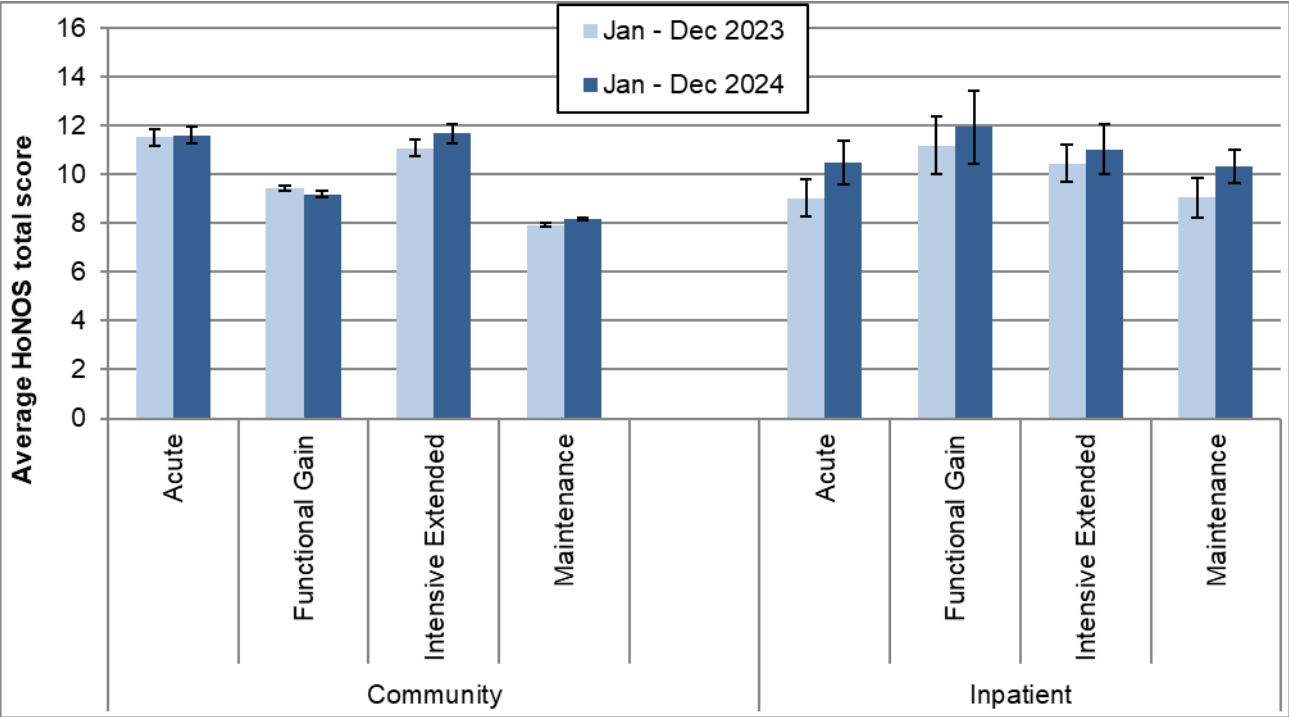
**Table 9: Focus of care categories by team: New Zealand, Jan - Dec 2023 and Jan - Dec 2024**

Team type	Acute		Functional gain		Intensive extended		Maintenance		Number of collections	
	Last	This	Last	This	Last	This	Last	This	Last	This
<b>Community services</b>										
Alcohol and drug team	5%	6%	26%	18%	2%	3%	67%	72%	1,435	1,334
Child and youth team	6%	3%	33%	31%	6%	7%	54%	58%	267	259
Co-existing problem team		15%		45%		5%		35%		20
Community team	8%	9%	24%	22%	3%	3%	65%	66%	34,806	33,703
Early intervention team	3%	4%	39%	38%	2%	2%	56%	56%	1,124	930
Eating disorders team	7%	7%	43%	51%	12%	9%	39%	33%	559	591
Forensic team	6%	10%	18%	14%	2%	4%	75%	73%	108	113
Kaupapa Māori team	3%	4%	14%	11%	4%	2%	78%	82%	1,784	2,007
Maternal mental health team	9%	5%	56%	55%	1%	2%	33%	38%	1,542	1,611
Needs assessment and service coordination team	2%	4%	13%	11%	4%	3%	80%	82%	607	685
Older people team	7%	10%	4%	9%	1%	1%	87%	81%	138	129
Pacific people team	3%	5%	16%	15%	0%	0%	81%	79%	996	947
Specialty team	10%	7%	32%	34%	3%	2%	56%	56%	304	335
<b>Total</b>	<b>7%</b>	<b>8%</b>	<b>25%</b>	<b>23%</b>	<b>3%</b>	<b>3%</b>	<b>64%</b>	<b>65%</b>	<b>43,709</b>	<b>42,682</b>
<b>Inpatient services</b>										
Alcohol and drug team	100%	100%	0%	0%	0%	0%	0%	0%	178	180
Forensic team	8%	7%	3%	6%	38%	35%	51%	52%	175	179
Inpatient team	86%	86%	3%	3%	1%	1%	10%	10%	6,787	6,254
Maternal mental health team	93%	83%	7%	8%	0%	0%	0%	8%	56	60
Older people team	76%	67%	0%	0%	0%	4%	24%	29%	21	24
<b>Total</b>	<b>84%</b>	<b>84%</b>	<b>3%</b>	<b>3%</b>	<b>2%</b>	<b>2%</b>	<b>10%</b>	<b>11%</b>	<b>7,244</b>	<b>6,716</b>

**Notes:** For further information see notes for Graph 9.



Graph 10: HoNOS total score (review collections) by focus of care: New Zealand, Jan - Dec 2023 and Jan - Dec 2024



**Notes:** This data is just for review collections.

**Interpretation:** Points are significantly different if error bars do not overlap. A general downward trend in scores from acute to maintenance focus of care might be expected.

**Table 10: HoNOS total score (review collections) by focus of care by team: New Zealand, Jan - Dec 2024**

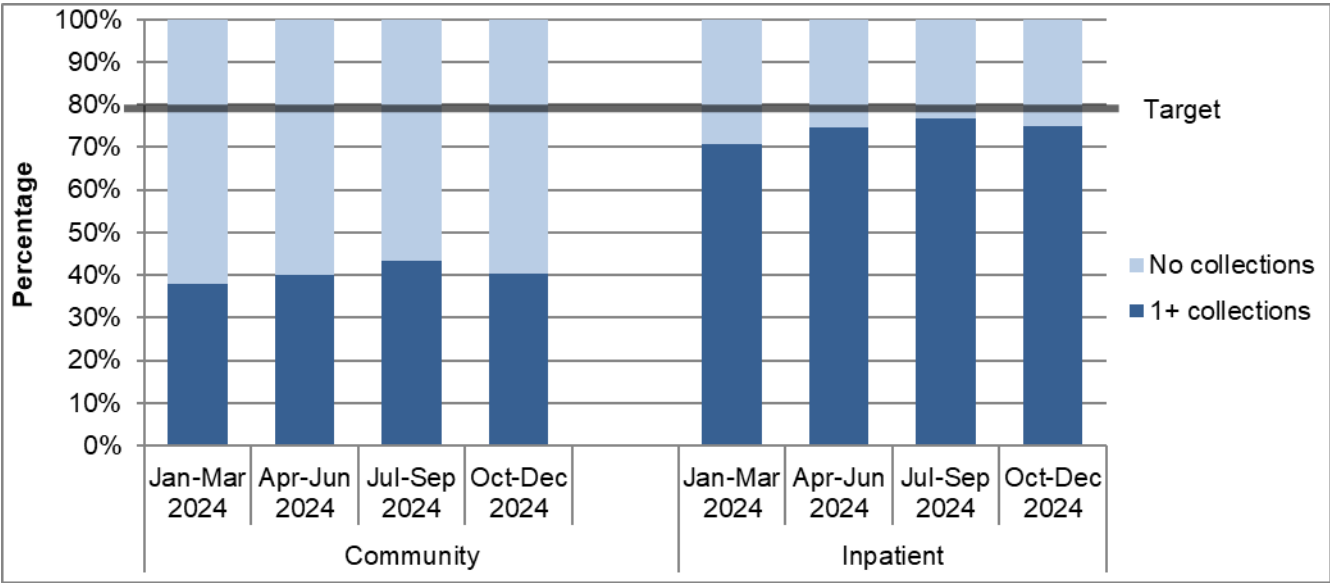
Team type	Acute			Functional Gain			Intensive Extended			Maintenance		
	N	Mean	CI	N	Mean	CI	N	Mean	CI	N	Mean	CI
<b>Community services</b>												
Alcohol and drug team	40	13.8	11.9-15.7	172	9.1	8.4-9.9	35	8.7	6.7-10.8	867	7.6	7.2-7.9
Child and youth team	1,210	11.1	10.8-11.5	58	12.5	10.6-14.4				125	9.0	8.0-9.9
Community team				6,069	9.1	9.0-9.2	866	11.4	10.9-11.8	19,407	8.0	8.0-8.1
Early intervention team				292	8.5	7.9-9.1				396	7.6	7.0-8.2
Eating disorders team	35	12.6	10.8-14.4	179	11.5	10.5-12.4	36	12.7	9.9-15.4	164	8.9	8.2-9.6
Forensic team										74	9.2	8.1-10.3
Kaupapa Māori team	40	16.3	14.1-18.5	206	12.4	11.5-13.3	42	13.9	12.4-15.5	1,543	9.7	9.4-10.0
Maternal mental health team				529	7.8	7.4-8.2	27	14.0	11.4-16.5	300	6.9	6.4-7.3
Needs assessment and service coordination team				67	10.2	9.1-11.3				549	11.2	10.7-11.8
Older people team										69	10.6	9.3-11.8
Pacific people team	28	14.9	11.8-18.0	119	9.1	8.3-10.0				708	6.3	6.0-6.7
Specialty team				102	12.1	10.9-13.4				177	11.8	10.9-12.7
<b>Total</b>	<b>1,427</b>	<b>11.6</b>	<b>11.2-11.9</b>	<b>7,823</b>	<b>9.2</b>	<b>9.1-9.3</b>	<b>1,067</b>	<b>11.7</b>	<b>11.3-12.1</b>	<b>24,388</b>	<b>8.2</b>	<b>8.1-8.2</b>
<b>Inpatient services</b>												
Forensic team							55	10.5	9.3-11.6	83	11.6	10.3-12.8
Inpatient team	398	10.5	9.6-11.4	80	11.8	10.2-13.4	40	11.8	9.8-13.7	272	9.9	9.1-10.7
<b>Total</b>	<b>411</b>	<b>10.5</b>	<b>9.6-11.4</b>	<b>88</b>	<b>11.9</b>	<b>10.4-13.4</b>	<b>96</b>	<b>11.0</b>	<b>10.0-12.1</b>	<b>357</b>	<b>10.3</b>	<b>9.6-11.0</b>

**Notes:** For further information see notes for Graph 10.

### 3. Collection completion and validity

This section presents information about the completeness and validity of the data on which the remainder of this report is based. It also shows the current targets for the variables presented.

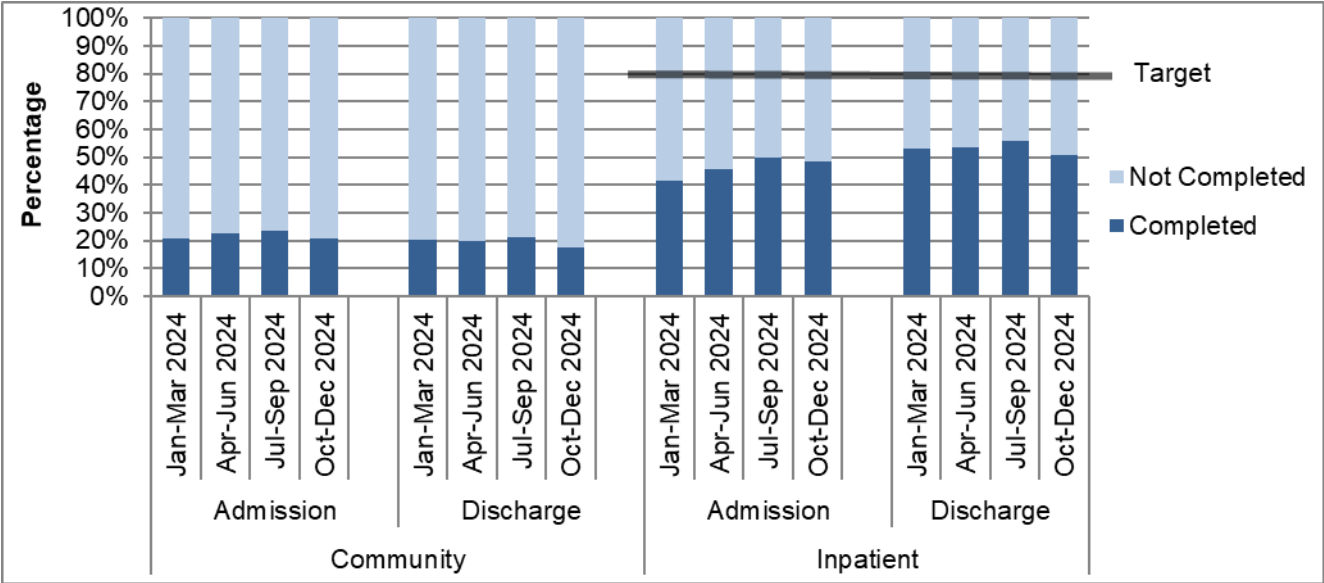
**Graph 11: Percentage of service users with at least one collection during the period in a quarter: New Zealand, Jan – Dec 2024 (18 to 64 years)**



**Interpretation:** The longer the dark part of the bar, the more completely the data set includes all service users, and the more meaningful and representative the graphs, tables, and analyses using these data will be. This data is approximate due to movement of service users between teams and similar variations; however, it does provide a reasonably accurate representation of completion of measures. Only data with valid collections is included.

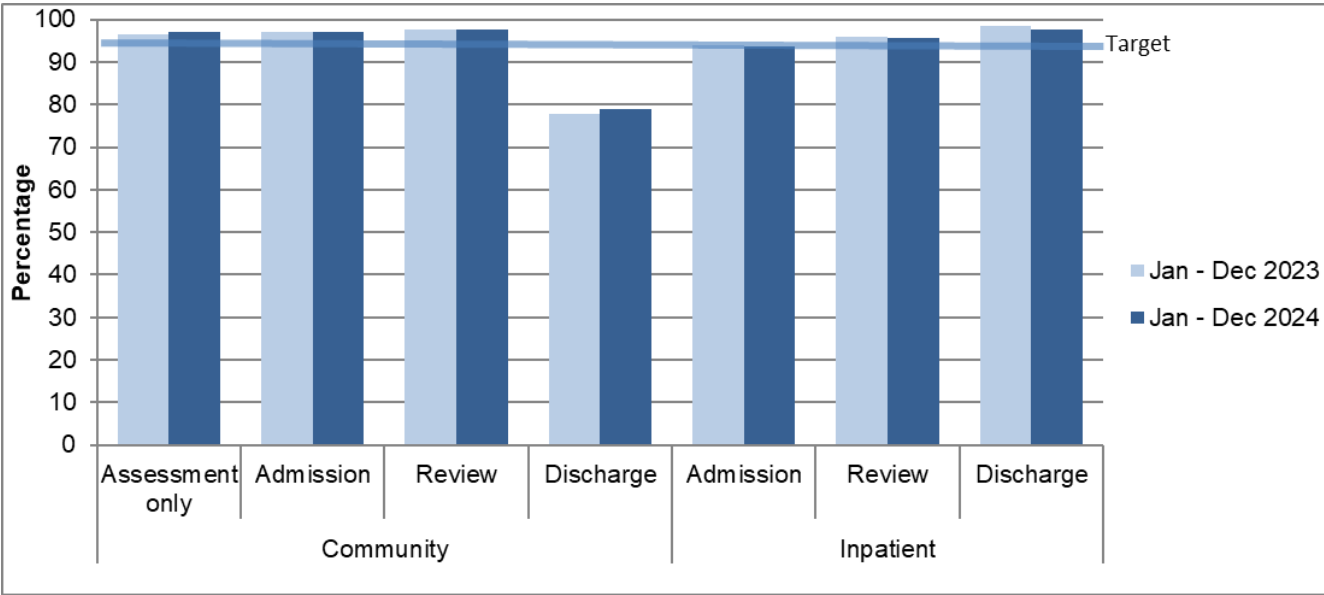
**Target:** To meet or exceed the target shown on the graph for the percentage of service users with at least one collection within the period.

Graph 12: Percentage of service users with admission and discharge collections completed by quarter: New Zealand, Jan – Dec 2024 (18 to 64 years)



**Interpretation:** The longer the dark bar, the larger the percentage of admission and discharge that had the relevant data collection type. Data is approximate due to movement of service users between teams and similar variations; however, it does provide a reasonably accurate representation of completion of measures. Only data with valid collections is included.

Graph 13: Percentage of valid collections, HoNOS: New Zealand, Jan - Dec 2023 and Jan - Dec 2024



**Notes:** Valid = Two or fewer of the 12 items scored as unknown or missing. Discharge excludes collection types for lost to care, discharge dead and brief episode of care. Collection in drug and alcohol teams is not required, therefore AOD data is excluded.

**Interpretation:** The longer the dark lines, the higher the percentage of valid scores.

**Target:** Aim for 95% valid collections.

**Table 13: Invalid collections by team, by HoNOS item: New Zealand, Jan - Dec 2024**

Team type	% Invalid			Number of invalid ratings by HoNOS item												Total number
	Adm	Rev	Dch	1	2	3	4	5	6	7	8	9	10	11	12	
Community services																
Child and youth team	0%	1%	10%	10	11	11	11	11	11	11	14	10	10	10	12	406
Community team	3%	2%	22%	2,667	2,766	3,403	2,896	2,855	2,918	2,900	3,073	3,032	2,974	3,165	3,443	56,164
Early intervention team	3%	1%	17%	53	58	69	59	54	74	63	73	61	54	68	77	1,274
Eating disorders team	1%	1%	20%	56	60	58	60	57	53	61	56	60	55	61	59	1,060
Forensic team	4%	3%	0%	2	3	3	2	2	4	3	4	3	2	5	5	177
Kaupapa Māori team	5%	3%	33%	161	180	201	189	172	205	171	200	177	186	197	189	2,713
Maternal mental health team	2%	3%	16%	201	199	223	199	204	196	199	196	203	205	214	208	3,066
Needs assessment and service coordination team	2%	0%	4%	4	8	7	3	3	3	3	3	3	6	7	8	903
Older people team	4%	2%	18%	14	16	16	18	14	17	18	17	16	17	17	17	248
Pacific people team	2%	1%	26%	57	58	65	57	58	67	61	60	59	56	65	68	1,309
Specialty team	0%	2%	17%	14	17	40	21	17	21	22	23	27	23	24	31	960
Total	3%	2%	21%	3,239	3,376	4,096	3,515	3,447	3,569	3,512	3,719	3,651	3,588	3,833	4,117	68,304
Inpatient services																
Eating disorders team	0%			0	0	0	0	0	0	0	0	0	0	0	0	38
Forensic team	3%	0%	0%	0	2	0	0	0	0	0	2	2	0	0	3	220
Inpatient team	7%	5%	2%	155	241	557	363	261	244	338	468	612	423	941	1,126	14,505
Maternal mental health team	0%		0%	0	0	4	0	0	1	0	1	2	0	8	6	156
Older people team	14%			0	6	7	3	0	2	1	5	3	1	9	13	63
Total	6%	4%	2%	155	249	568	366	261	247	339	476	619	424	958	1,148	14,986

**Notes:** Per cent (%) invalid collections = the percentage of collections that had three or more of the 12 items scored as unknown or missing. Number of invalid ratings by HoNOS item = for each of the HoNOS items, the number of collections for which that item was unknown or missing. Discharge excludes collection types for lost to care, deceased and brief episode of care. Collection in drug and alcohol teams is not required, therefore AOD data is excluded. **Interpretation:** The lower the per cent invalid, the higher the percentage of valid scores. The lower the number of invalid collections by HoNOS item, the more collections that have valid data on that HoNOS item. **Target:** Aim for 95% valid collections (5% invalid collections) or better. Aim for as few invalid items as possible, with all items having a similar validity rate.