



# PRIMHD summary report – HoNOS

Health of the Nation Outcomes Scales – working age adults report for New Zealand

[tepou.co.nz](http://tepou.co.nz)

This report summarises national Programme for the Integration of Mental Health Data (PRIMHD) data submitted by Te Whatu Ora Districts. In particular, it presents Health of the Nation Outcomes Scale (HoNOS) data for working aged adults, from services where HoNOS is the primary measure.

This report is organised into three major sections that provide information about:

- 1. Outcomes related information:** This provides indications about what changes have occurred for service users between entering and leaving the service. Outcome is assessed by comparing the group admitted and the group discharged from the service in the same time period. This should provide a reasonable indication of outcomes achieved unless the service user mix has changed significantly over the usual period for which service is delivered.
- 2. Service related information:** This provides information about the services, such as the overall severity of service users who use different services.
- 3. Collection completion and validity:** This details the completeness of the data set provided by your mental health services. This is important because it indicates how valid and reliable the data sets are likely to be. The less complete the data set, the less valid the information is likely to be.

In many cases the data is presented graphically for New Zealand, and then presented as a table for the individual team types (see team type classification factsheet).

The time period covered differs for the different data presented. See the title or the notes under the graphs or tables for information about the time period covered. Unless otherwise stated, the notes under the graphs also apply to the corresponding table.

For all graphs and tables, if there are less than twenty cases in the data set, then the information is not presented. This is because small samples frequently provide inaccurate and potentially misleading results. See the notes and user guide for other important information about the graphs and tables.

Where appropriate, the statistical **confidence interval** is presented. This is shown by error bars (small lines above and below the average) on the graphs, and a score range in some tables. As a rule of thumb, if the confidence intervals of two data points do not overlap, the two points can be considered to be significantly different. If the confidence intervals of the data points do overlap, we assume the points are not significantly different. It is important to note that statistical significance may not indicate a clinically significant difference.

**See the associated user guide for more information** about how to understand and use the data presented in this report.

Data for tables and graphs was extracted 26 April 2026 from PRIMHD by Te Whatu Ora, then analysed and formatted by Te Pou.

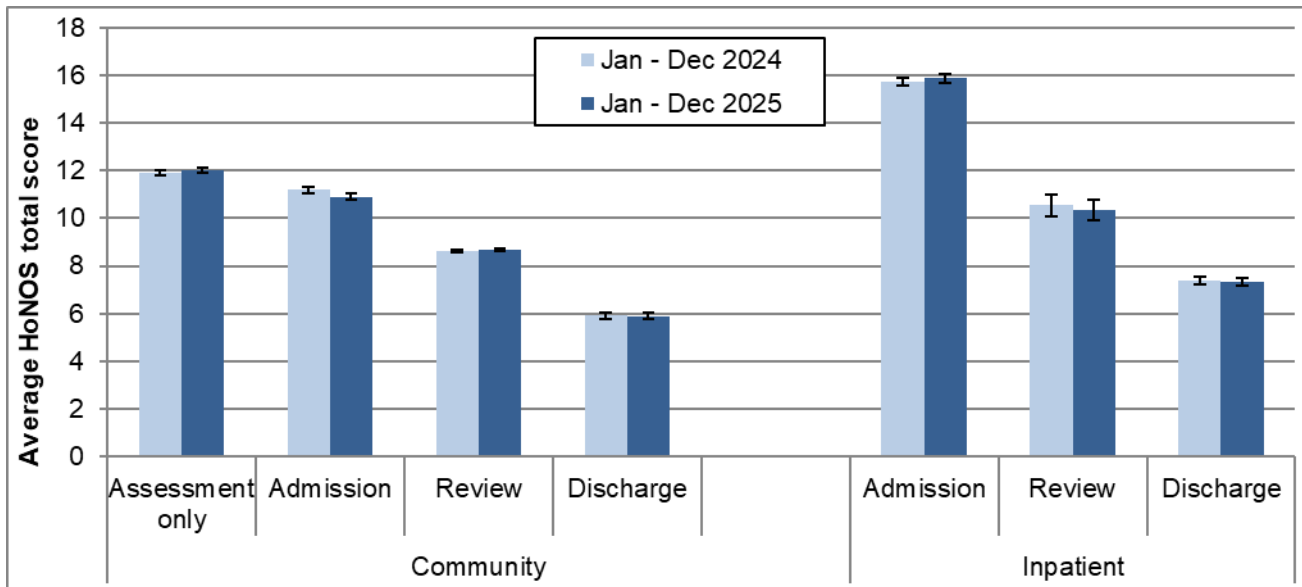
**PLEASE NOTE:**

For this period a few Te Whatu Ora Districts have incomplete data which will affect New Zealand totals.

# 1. Outcomes – changes in service user status

This section presents HoNOS data indicating the status of service users at different stages of their contact with Te Whatu Ora District mental health services. Graph and Table 1, and Graph 2 show results from HoNOS total scores. Graphs and Tables 3 to 5b show results related to the percentage of HoNOS items in the clinical range. Table 6 shows results from the Index of Severity derived from HoNOS scores.

**Graph 1: Average HoNOS total score (12 items) by collection type: New Zealand, Jan - Dec 2024 and Jan - Dec 2025**



**Notes:** Error bars indicate the confidence intervals around the data point. If error bars overlap, the data points are not significantly different. Community discharge does not include discharge to an inpatient unit.

**Interpretation:** Decrease between admission and discharge is an indication of the outcomes achieved by the service user and service. The greater the decrease between admission and discharge, and the lower the average HoNOS score at discharge, the more positive the outcome.

**Target:** A greater decrease from admission to discharge and lower average rating at discharge.

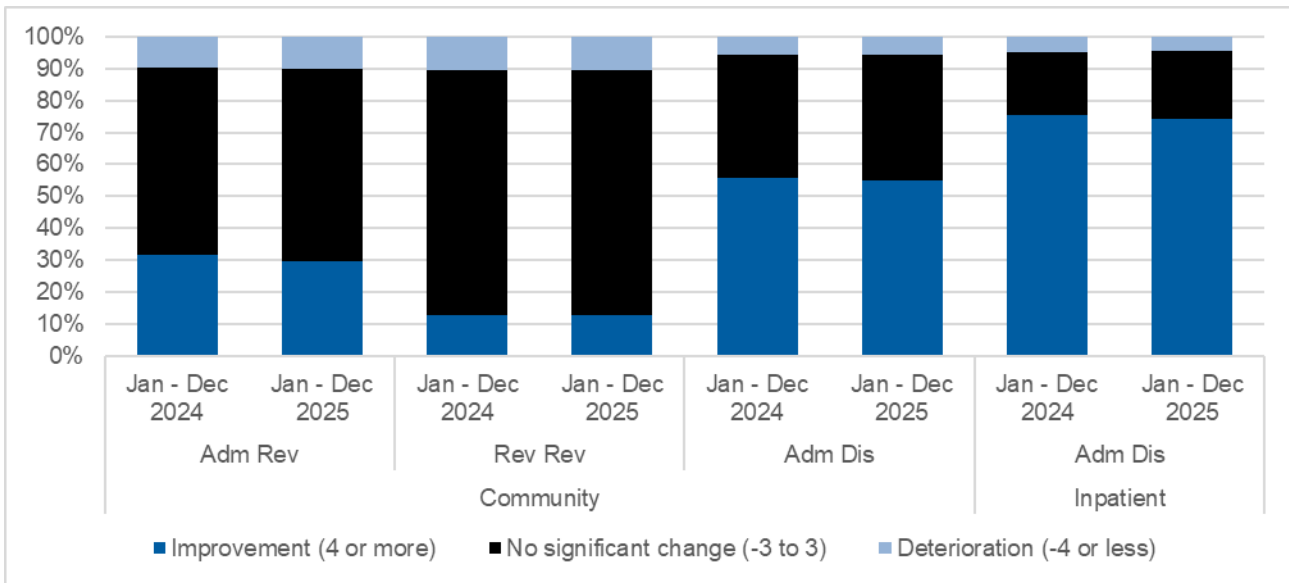
**Table 1: Average HoNOS total score (12 items), by collection type and team: New Zealand, Jan - Dec 2025**

Team type	Assessment only			Admission			Review			Discharge		
	N	Mean	CI	N	Mean	CI	N	Mean	CI	N	Mean	CI
<b>Community services</b>												
Alcohol and drug team	304	13.8	13.1-14.6	302	11.5	10.8-12.1	1,130	7.6	7.3-8.0	149	8.3	7.2-9.3
Child and youth team	97	11.1	10.0-12.3	36	11.0	9.0-13.1	181	9.5	8.6-10.5	91	6.1	5.1-7.1
Co-existing problem team				30	13.1	10.3-15.9	69	11.4	10.2-12.7			
Community team	8,967	12.1	12.0-12.2	7,033	11.0	10.8-11.1	29,222	8.6	8.6-8.7	4,935	6.0	5.8-6.1
Early intervention team				160	10.2	9.2-11.2	759	8.0	7.6-8.5	119	5.4	4.5-6.4
Eating disorders team	44	14.0	12.1-15.9	280	12.0	11.4-12.6	447	11.1	10.6-11.7	152	7.1	6.3-8.0
Forensic team				24	12.6	9.3-15.8	67	9.3	7.6-11.0			
Kaupapa Māori team	61	11.3	9.7-12.8	242	11.9	11.0-12.8	2,034	9.7	9.4-10.0	128	7.3	6.2-8.4
Maternal mental health team	152	9.5	8.7-10.3	920	9.5	9.2-9.8	1,160	7.2	7.0-7.4	741	4.1	3.8-4.4
Needs assessment and service coordination team	133	12.5	11.5-13.6	61	12.5	10.8-14.2	724	11.3	10.8-11.7	38	10.3	8.4-12.2
Older people team				54	12.7	10.9-14.5	75	12.5	10.6-14.4	43	8.5	7.0-10.0
Pacific people team				200	8.9	8.0-9.7	835	6.7	6.4-7.0	94	4.8	4.0-5.6
Specialty team	371	10.2	9.6-10.7	78	13.8	12.5-15.2	219	11.7	10.8-12.6	30	9.2	6.2-12.2
<b>Total</b>	<b>10,181</b>	<b>12.0</b>	<b>11.9-12.1</b>	<b>9,431</b>	<b>10.9</b>	<b>10.8-11.0</b>	<b>36,951</b>	<b>8.7</b>	<b>8.6-8.7</b>	<b>6,541</b>	<b>5.9</b>	<b>5.8-6.0</b>
<b>Inpatient services</b>												
Alcohol and drug team				182	12.2	11.6-12.9				179	9.1	8.6-9.7
Eating disorders team				21	12.9	10.7-15.1						
Forensic team				27	13.6	9.9-17.4	134	11.5	10.5-12.5	40	2.9	1.7-4.1
Inpatient team				7,193	16.0	15.9-16.2	996	10.2	9.7-10.6	5,385	7.3	7.1-7.5
Maternal mental health team				96	12.2	11.0-13.3				82	7.4	6.0-8.8
Older people team				34	14.8	12.0-17.5				25	8.6	5.8-11.4
<b>Total</b>				<b>7,554</b>	<b>15.9</b>	<b>15.7-16.1</b>	<b>1,139</b>	<b>10.4</b>	<b>9.9-10.8</b>	<b>5,726</b>	<b>7.3</b>	<b>7.2-7.5</b>

**Notes:** N = number of collections in period. Average = average HoNOS (12 item) score, CI = confidence interval for average score. Community discharge does not include discharge to an inpatient unit.

**Interpretation:** If confidence intervals for two scores do not overlap, then the scores have a statistically significant difference. It is important to note that statistical significance may not indicate a clinically significant difference.

**Graph 2: Difference in HoNOS total score (12 items) for matched pairs by pair type and setting, New Zealand, Jan - Dec 2024 and Jan - Dec 2025**



**Notes:** Shows the difference of the matched pair between the start and end HoNOS total score. Community admission to discharge includes discharge no further care and discharge other.

**Interpretation:** The graphs compare two time periods. Dark blue band indicates percentage improvement within the given time period, while black band indicates no significant change and light blue deterioration. Improvement = 4 or more, no significant change = -3 to 3 and deterioration = -4 or less.

**Target:** A greater percentage increase in improvement for both community and inpatient settings and a smaller percentage in deterioration.

**Table 2: Difference in HoNOS total score (12 items) for matched pairs by pair type and team, community New Zealand, Jan - Dec 2025**

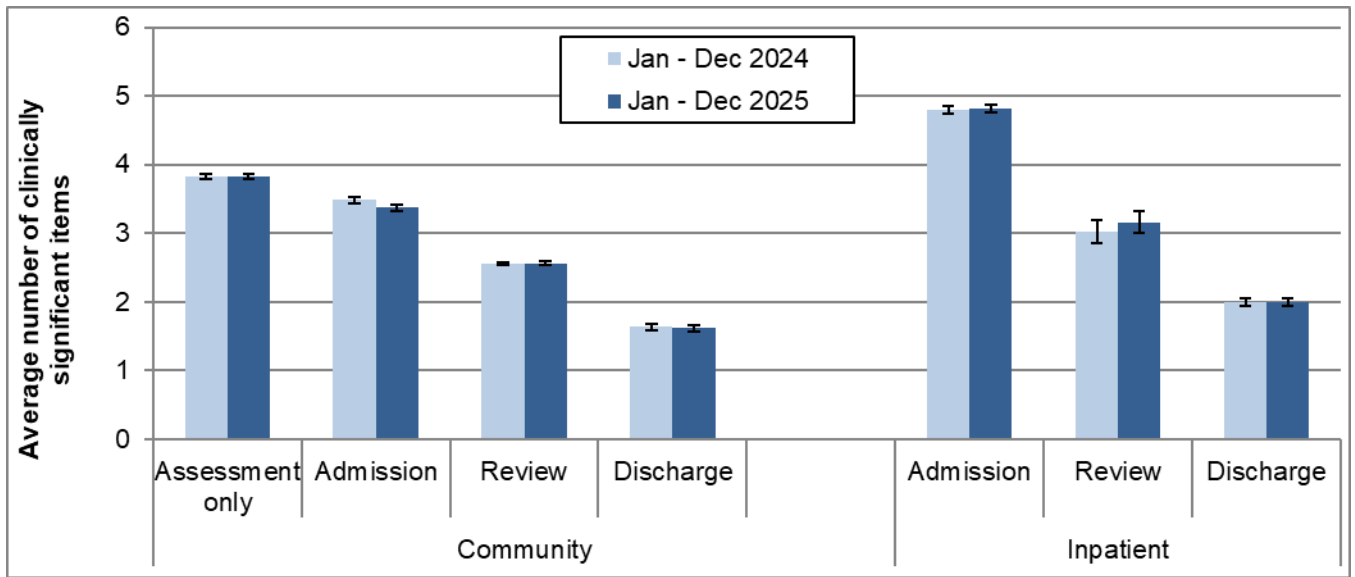
Team Type	Com Adm Rev				Com Rev Rev				Com Adm Dis			
	↓ Det	No SC	↑ Imp	N	↓ Det	No SC	↑ Imp	N	↓ Det	No SC	↑ Imp	N
Alcohol and drug team	5%	63%	33%	40	15%	67%	18%	369	10%	52%	38%	61
Child and youth team					16%	64%	20%	25				
Community team	11%	60%	29%	1,635	10%	78%	12%	11,414	6%	41%	53%	2,073
Early intervention team	15%	52%	33%	54	14%	69%	17%	229	9%	33%	57%	75
Eating disorders team	12%	67%	22%	60	8%	75%	17%	161	4%	48%	48%	83
Forensic team					0%	75%	25%	24				
Kaupapa Māori team	12%	58%	31%	85	14%	73%	13%	1,116	8%	33%	58%	60
Maternal mental health team	2%	67%	31%	260	7%	79%	14%	411	1%	33%	66%	420
Needs assessment and service coordination team					4%	84%	12%	204				
Older people team					15%	75%	10%	20	4%	33%	63%	24
Pacific people team	22%	50%	28%	50	14%	70%	16%	372	11%	39%	50%	62
Specialty team					7%	82%	12%	76				
<b>Total</b>	<b>10%</b>	<b>60%</b>	<b>29%</b>	<b>2,224</b>	<b>11%</b>	<b>77%</b>	<b>13%</b>	<b>14,436</b>	<b>6%</b>	<b>39%</b>	<b>55%</b>	<b>2,890</b>

**Notes:** Shows the difference of the matched pair between the start and end HoNOS total score. Community admission to discharge includes discharge no further care and discharge other.

**Interpretation:** Improvement (↑Imp) = 4 or more, no significant change (No SC) = -3 to 3 and deterioration (↓Det) = -4 or less.

**Target:** A greater percentage increase in improvement for community setting and a smaller percentage in deterioration.

**Graph 3: Average number of clinically significant HoNOS items by collection type: New Zealand, Jan - Dec 2024 and Jan - Dec 2025**



**Notes:** Average number clinically significant items = the average number of items in the clinical range (2, 3 or 4) per collection. Community discharge does not include discharge to an inpatient unit.

**Interpretation:** Points are significantly different if error bars don't overlap. A decrease between admission and discharge is an indication of the outcomes achieved by the service and service user. A greater decrease between admission and discharge indicates a better outcome. A lower admission score could be indication of service users seeking out and being engaged by services at a lower level of severity.

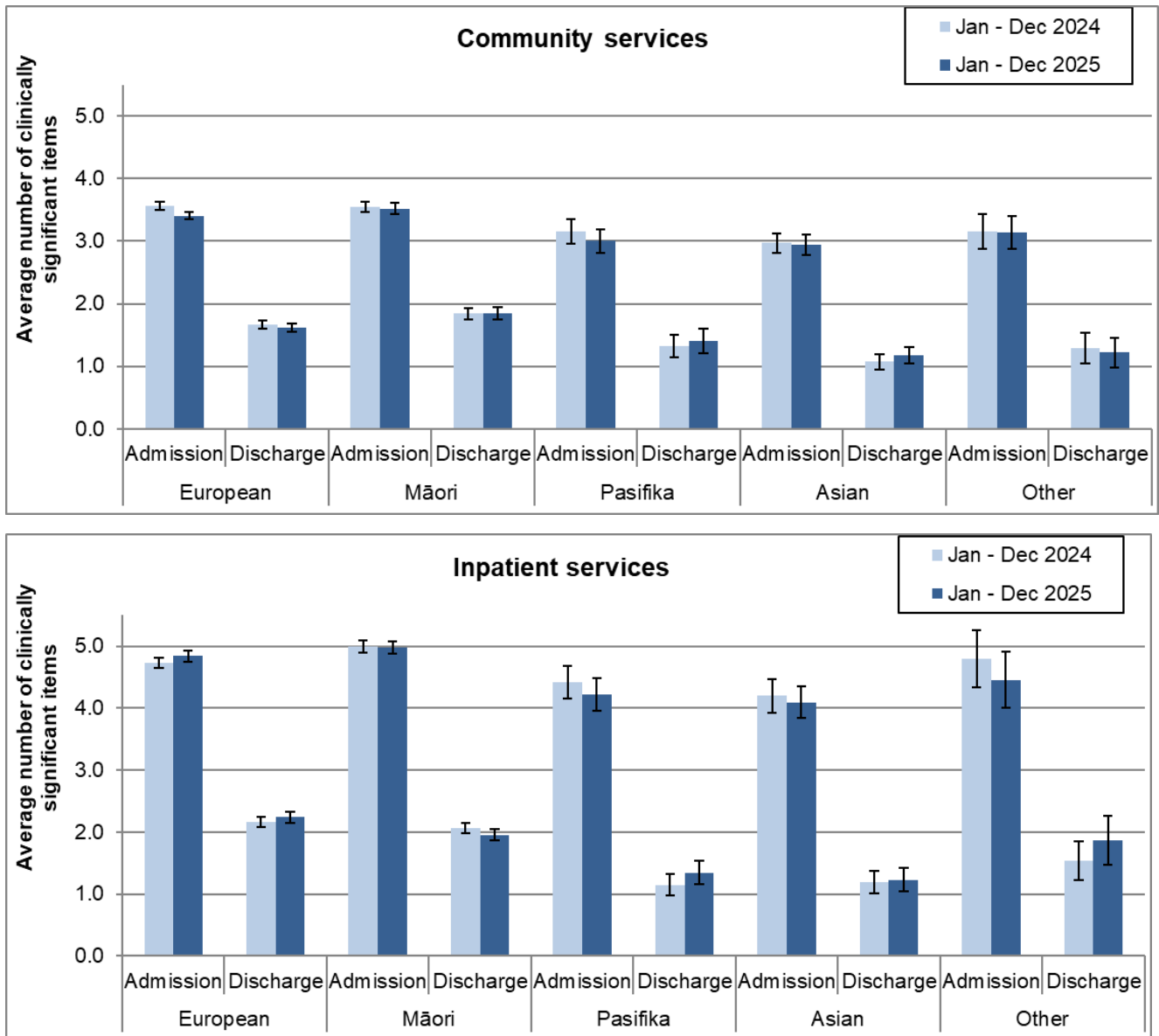
**Target:** A greater decrease from admission to discharge and smaller percentage in clinical range at discharge

**Table 3: Average number of clinically significant HoNOS items by collection type and team: New Zealand, Jan - Dec 2025**

Team type	Assessment only			Admission			Review			Discharge		
	N	Mean	CI	N	Mean	CI	N	Mean	CI	N	Mean	CI
<b>Community services</b>												
Alcohol and drug team	304	4.3	4.0-4.6	302	3.5	3.3-3.8	1,130	2.3	2.2-2.5	149	2.5	2.1-2.9
Child and youth team	97	3.7	3.2-4.1	36	3.4	2.6-4.1	181	2.9	2.5-3.2	91	1.6	1.2-2.1
Co-existing problem team				30	4.0	3.0-5.0	69	3.5	3.0-3.9			
Community team	8,967	3.9	3.8-3.9	7,033	3.4	3.3-3.5	29,222	2.5	2.5-2.6	4,935	1.6	1.6-1.7
Eating disorders team	44	4.3	3.6-4.9	160	3.2	2.8-3.5	759	2.4	2.2-2.5	119	1.5	1.1-1.8
Eating disorders team				280	3.6	3.4-3.9	447	3.4	3.2-3.6	152	1.9	1.6-2.2
Forensic team				24	3.6	2.5-4.8	67	2.6	2.1-3.2			
Kaupapa Māori team	61	3.5	2.9-4.1	242	3.5	3.1-3.8	2,034	2.8	2.7-2.9	128	2.0	1.5-2.4
Maternal mental health team	152	3.1	2.8-3.4	920	3.0	2.9-3.1	1,160	2.2	2.1-2.2	741	1.0	0.9-1.1
Needs assessment and service coordination team	133	3.7	3.3-4.2	61	3.9	3.2-4.5	724	3.5	3.3-3.7	38	3.1	2.3-3.9
Older people team				54	4.2	3.6-4.8	75	4.0	3.3-4.6	43	2.6	2.1-3.1
Pacific people team				200	2.9	2.5-3.2	835	1.8	1.7-1.9	94	1.3	1.0-1.6
Specialty team	371	3.0	2.8-3.2	78	4.5	4.0-5.0	219	3.8	3.4-4.1	30	2.5	1.5-3.6
<b>Total</b>	<b>10,181</b>	<b>3.8</b>	<b>3.8-3.9</b>	<b>9,431</b>	<b>3.4</b>	<b>3.3-3.4</b>	<b>36,951</b>	<b>2.6</b>	<b>2.5-2.6</b>	<b>6,541</b>	<b>1.6</b>	<b>1.6-1.7</b>
<b>Inpatient services</b>												
Alcohol and drug team				182	3.2	2.9-3.4				179	2.7	2.5-2.9
Eating disorders team				21	4.1	3.2-5.0				40	0.5	0.2-0.8
Forensic team				27	4.2	3.0-5.4	134	3.8	3.4-4.2			
Inpatient team				7,193	4.9	4.8-4.9	996	3.1	2.9-3.2	5,385	2.0	1.9-2.0
Maternal mental health team				96	3.9	3.5-4.3				82	2.2	1.7-2.7
Older people team				34	4.3	3.5-5.2				25	2.4	1.5-3.4
<b>Total</b>				<b>7,554</b>	<b>4.8</b>	<b>4.8-4.9</b>	<b>1,139</b>	<b>3.2</b>	<b>3.0-3.3</b>	<b>5,726</b>	<b>2.0</b>	<b>1.9-2.1</b>

**Notes:** N = number of collections in period. Average = average number of HoNOS items in the clinically significant range (ie scoring 2, 3, or 4). CI = confidence interval for average score. Community discharge does not include discharge to an inpatient unit. **Interpretation:** If confidence intervals for two scores do not overlap, then the scores have a statistically significant difference. It is important to note that statistical significance may not indicate a clinically significant difference

**Graph 4: Average number of clinically significant HoNOS items at admission and discharge by ethnic group: New Zealand, Jan - Dec 2024 and Jan - Dec 2025**

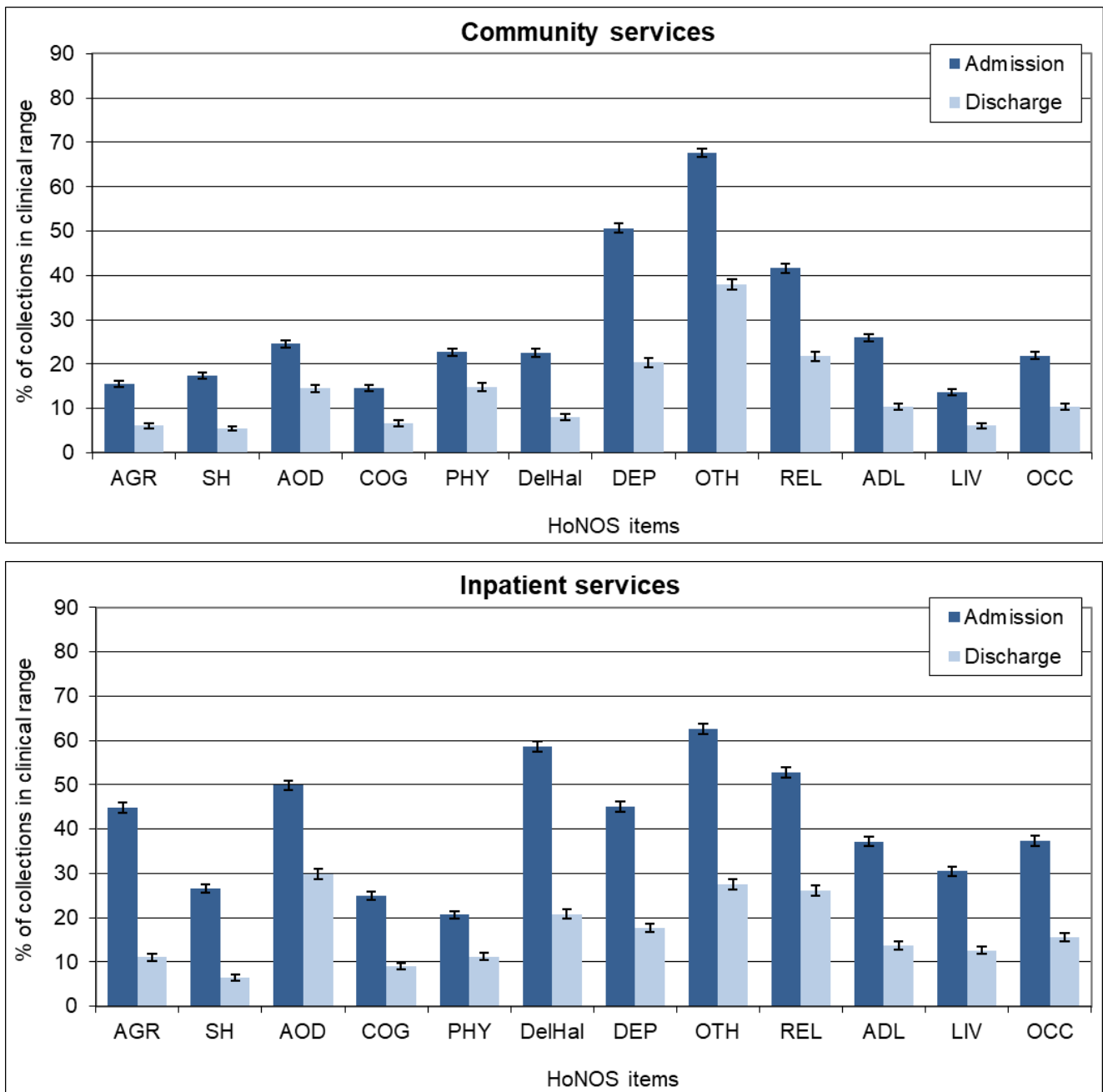


**Notes:** Average number of HoNOS items in the clinical range (2, 3 or 4). Community discharge does not include discharge to an inpatient unit.

**Interpretation:** Points are significantly different if error bars don't overlap. Decrease between admission and discharge is an indication of the outcomes achieved by the service and service user. A greater decrease between admission and discharge indicates a better outcome. A lower admission score could be indication of service users seeking out and being engaged by services at a lower level of acuity.

**Target:** A greater decrease from admission to discharge and smaller percentage in clinical range at discharge.

**Graph 5a: Percentage of collections in clinical range on each HoNOS item (admission and discharge collections): New Zealand, Jan - Dec 2025**



**Notes:** Percentage of service users in the clinical range (2, 3 or 4) for each HoNOS item. Community discharge does not include discharge to an inpatient unit.

**Interpretation:** The longer the bar, the more prevalent the difficulty measured by the item is amongst service users. A greater decrease in the length of the bar from admission to discharge suggests a better outcome for the difficulty measured by the item. Items that show medium to high frequency and less change may suggest possible targets for service improvement.

**Target:** A greater decrease from admission to discharge and smaller percentage in clinical range at discharge.

**Table 5a: Percentage of collections in clinical range on each HoNOS item (admission and discharge collections) by team: New Zealand Jan - Dec 2025**

**Community services**

<b>First 6 HoNOS items</b>														
<b>Team type</b>	<b>N</b>		<b>AGR</b>		<b>SH</b>		<b>AOD</b>		<b>COG</b>		<b>PHY</b>		<b>DelHal</b>	
	<b>Adm</b>	<b>Disch</b>	<b>Adm</b>	<b>Disch</b>	<b>Adm</b>	<b>Disch</b>	<b>Adm</b>	<b>Disch</b>	<b>Adm</b>	<b>Disch</b>	<b>Adm</b>	<b>Disch</b>	<b>Adm</b>	<b>Disch</b>
Alcohol and drug team	302	149	13%	16%	14%	12%	45%	40%	17%	11%	24%	18%	21%	9%
Child and youth team	36	91	31%	11%	28%	8%	11%	9%	19%	8%	17%	10%	14%	3%
Co-existing problem team	30		13%		10%		73%		21%		37%		33%	
Community team	7,029	4,929	16%	6%	19%	6%	26%	15%	14%	6%	22%	15%	24%	9%
Early intervention team	160	119	18%	5%	6%	2%	25%	25%	23%	8%	13%	6%	52%	13%
Eating disorders team	280	152	7%	3%	16%	5%	12%	7%	19%	9%	48%	17%	9%	5%
Forensic team	24		29%		13%		25%		38%		21%		33%	
Kaupapa Māori team	242	128	19%	6%	15%	3%	35%	23%	17%	11%	24%	17%	30%	13%
Maternal mental health team	920	741	10%	3%	12%	2%	5%	3%	9%	2%	21%	10%	3%	0%
Needs assessment and service coordination team	61	38	15%	16%	18%	18%	23%	16%	28%	32%	25%	13%	42%	29%
Older people team	54	43	45%	12%	7%	0%	11%	2%	77%	67%	39%	37%	35%	12%
Pacific people team	200	94	11%	3%	10%	2%	24%	10%	16%	9%	25%	15%	34%	16%
Specialty team	78	30	37%	13%	24%	7%	51%	20%	19%	17%	24%	33%	14%	20%
<b>Total</b>	<b>9,424</b>	<b>6,534</b>	<b>15%</b>	<b>6%</b>	<b>17%</b>	<b>5%</b>	<b>25%</b>	<b>15%</b>	<b>15%</b>	<b>7%</b>	<b>23%</b>	<b>15%</b>	<b>23%</b>	<b>8%</b>

Second 6 HoNOS items												
Team type	DEP		OTH		REL		ADL		LIV		OCC	
	Adm	Disch	Adm	Disch	Adm	Disch	Adm	Disch	Adm	Disch	Adm	Disch
Alcohol and drug team	44%	24%	70%	42%	42%	31%	28%	16%	19%	13%	19%	18%
Child and youth team	58%	27%	72%	35%	44%	27%	17%	10%	11%	8%	14%	8%
Co-existing problem team	52%		80%		38%		23%		13%		13%	
Community team	49%	21%	65%	38%	42%	22%	26%	10%	14%	6%	24%	11%
Early intervention team	31%	13%	51%	29%	42%	24%	25%	13%	12%	4%	25%	8%
Eating disorders team	64%	26%	99%	67%	37%	24%	33%	22%	7%	4%	15%	5%
Forensic team	17%		46%		46%		21%		35%		42%	
Kaupapa Māori team	36%	18%	60%	34%	41%	27%	27%	14%	18%	13%	24%	16%
Maternal mental health team	76%	18%	90%	41%	36%	16%	19%	3%	7%	3%	7%	1%
Needs assessment and service coordination team	36%	29%	66%	51%	46%	29%	43%	34%	27%	16%	23%	26%
Older people team	26%	7%	38%	19%	47%	35%	61%	56%	12%	2%	26%	12%
Pacific people team	36%	10%	40%	10%	34%	21%	22%	10%	15%	6%	24%	18%
Specialty team	59%	17%	58%	47%	54%	30%	40%	17%	25%	13%	46%	20%
<b>Total</b>	<b>51%</b>	<b>20%</b>	<b>68%</b>	<b>38%</b>	<b>42%</b>	<b>22%</b>	<b>26%</b>	<b>10%</b>	<b>14%</b>	<b>6%</b>	<b>22%</b>	<b>10%</b>

## Inpatient services

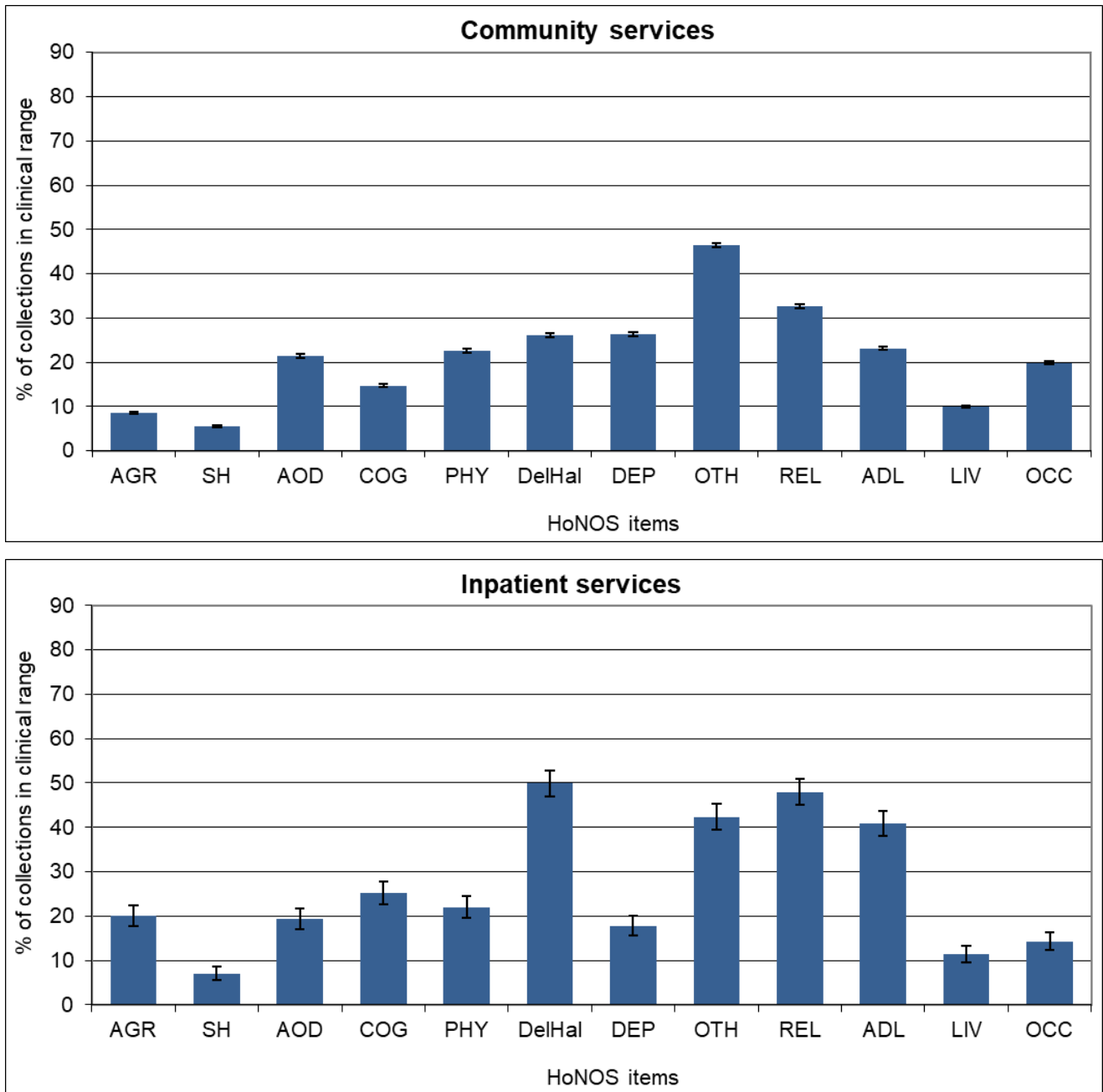
<b>First 6 HoNOS items</b>														
Team type	N		AGR		SH		AOD		COG		PHY		DelHal	
	Adm	Disch	Adm	Disch	Adm	Disch	Adm	Disch	Adm	Disch	Adm	Disch	Adm	Disch
Alcohol and drug team	182	179	10%	10%	5%	1%	100%	98%	8%	6%	42%	36%	3%	2%
Eating disorders team	21		19%		24%		10%		43%		48%		0%	
Forensic team	27	40	40%	0%	12%	0%	35%	10%	26%	5%	26%	3%	78%	13%
Inpatient team	7,183	5,384	46%	11%	27%	7%	49%	28%	25%	9%	20%	10%	61%	22%
Maternal mental health team	96	82	17%	12%	32%	7%	15%	14%	17%	11%	16%	9%	26%	11%
Older people team	34	25	53%	16%	6%	0%	6%	0%	56%	48%	35%	36%	53%	24%
<b>Total</b>	<b>7,542</b>	<b>5,725</b>	<b>45%</b>	<b>11%</b>	<b>27%</b>	<b>6%</b>	<b>50%</b>	<b>30%</b>	<b>25%</b>	<b>9%</b>	<b>21%</b>	<b>11%</b>	<b>59%</b>	<b>21%</b>
<b>Second 6 HoNOS items</b>														
Team type	DEP		OTH		REL		ADL		LIV		OCC			
	Adm	Disch	Adm	Disch	Adm	Disch	Adm	Disch	Adm	Disch	Adm	Disch	Adm	Disch
Alcohol and drug team	56%	47%	53%	49%	23%	6%	14%	8%	11%	9%	34%	22%		
Eating disorders team	71%		100%		33%		19%		5%		38%			
Forensic team	23%	0%	48%	8%	50%	5%	26%	3%	32%	3%	35%	5%		
Inpatient team	44%	17%	63%	27%	53%	27%	38%	14%	31%	13%	38%	16%		
Maternal mental health team	80%	41%	75%	40%	49%	32%	32%	15%	14%	15%	19%	14%		
Older people team	33%	16%	59%	16%	52%	25%	50%	44%	9%	14%	30%	9%		
<b>Total</b>	<b>45%</b>	<b>18%</b>	<b>63%</b>	<b>28%</b>	<b>53%</b>	<b>26%</b>	<b>37%</b>	<b>14%</b>	<b>31%</b>	<b>13%</b>	<b>37%</b>	<b>16%</b>		

**Notes:** Percentage of service users in the clinical range (2, 3 or 4) for each HoNOS item. Community discharge does not include discharges to an inpatient unit.

**Interpretation:** The higher the percentage, the more prevalent the difficulty measured by the item is amongst service users. A greater decrease between admission and discharge suggests a better outcome for the difficulty measured by the item. Items that show medium to high frequency and less change may suggest possible targets for service improvement.

**Target:** A greater decrease from admission to discharge and smaller percentage in clinical range at discharge.

**Graph 5b: Percentage of collections in clinical range on each HoNOS item (review collections): New Zealand, Jan - Dec 2025**



**Notes:** Percentage of service users in the clinical range (2, 3 or 4) for each HoNOS item on review collections. Due to most admission being less than 91 days, the data set for review collections in inpatient settings is relatively small.

**Interpretation:** The longer the bar, the more prevalent the difficulty measured by the item is amongst service users.

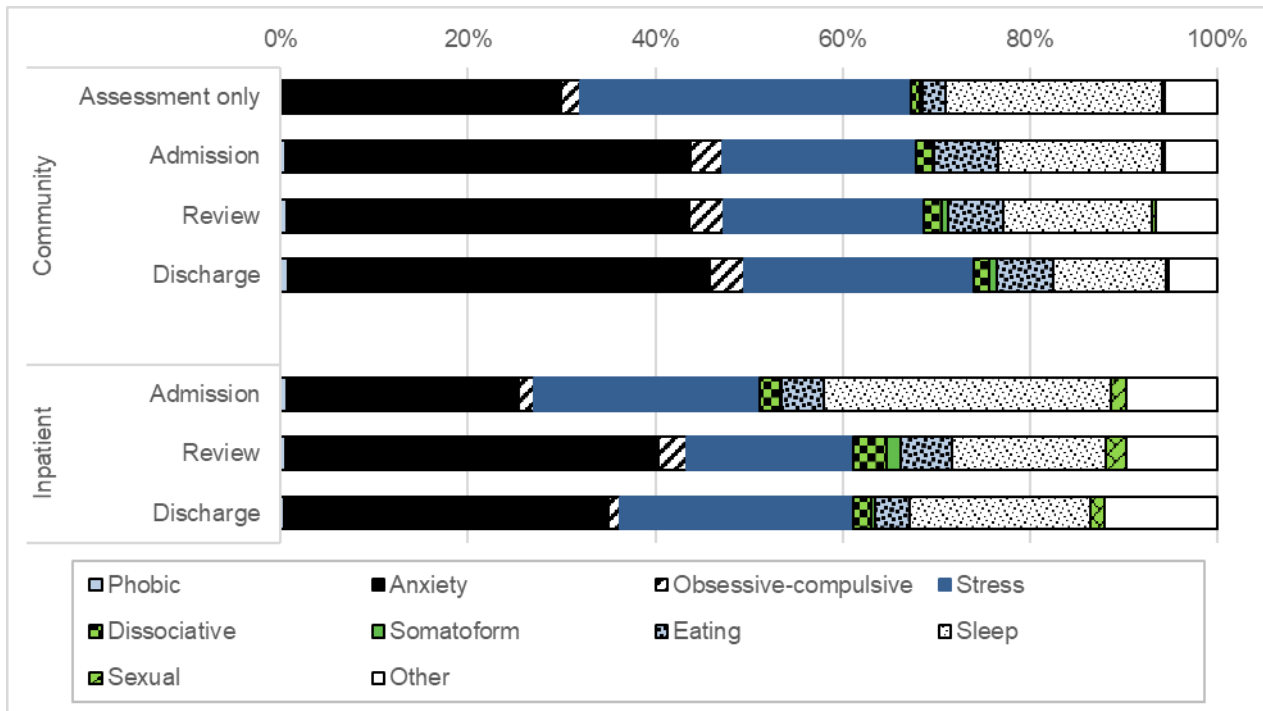
**Table 5b: Percentage of collections in clinical range on each HoNOS item (review collections) by team: New Zealand, Jan - Dec 2025**

Team type	N	AGR	SH	AOD	COG	PHY	DelHal	DEP	OTH	REL	ADL	LIV	OCC
<b>Community services</b>													
Alcohol and drug team	1,130	6%	4%	37%	14%	23%	22%	17%	38%	24%	20%	11%	18%
Child and youth team	181	7%	15%	9%	13%	23%	14%	40%	67%	41%	26%	10%	24%
Co-existing problem team	69	9%	4%	65%	23%	30%	32%	22%	64%	41%	20%	13%	23%
Community team	29,214	9%	6%	21%	14%	23%	27%	26%	46%	33%	23%	10%	20%
Early intervention team	759	8%	3%	28%	17%	10%	29%	22%	42%	33%	22%	10%	16%
Eating disorders team	447	7%	14%	11%	19%	38%	13%	54%	88%	39%	34%	8%	18%
Forensic team	67	16%	3%	18%	24%	14%	31%	24%	39%	45%	22%	10%	18%
Kaupapa Māori team	2,034	9%	4%	26%	22%	26%	32%	23%	39%	33%	25%	13%	24%
Maternal mental health team	1,160	6%	5%	3%	7%	15%	2%	53%	78%	30%	8%	5%	3%
Needs assessment and service coordination team	724	12%	7%	26%	34%	28%	47%	24%	47%	42%	40%	18%	25%
Older people team	75	16%	1%	8%	80%	41%	32%	30%	41%	37%	56%	24%	32%
Pacific people team	835	3%	4%	16%	9%	17%	28%	16%	25%	19%	18%	9%	16%
Specialty team	219	13%	7%	24%	24%	45%	26%	38%	67%	41%	42%	15%	37%
<b>Total</b>	<b>36,939</b>	<b>9%</b>	<b>6%</b>	<b>21%</b>	<b>15%</b>	<b>23%</b>	<b>26%</b>	<b>26%</b>	<b>46%</b>	<b>33%</b>	<b>23%</b>	<b>10%</b>	<b>20%</b>
<b>Inpatient services</b>													
Forensic team	134	17%	3%	12%	47%	33%	69%	12%	57%	62%	54%	1%	14%
Inpatient team	995	20%	8%	21%	22%	21%	47%	18%	40%	46%	39%	13%	14%
<b>Total</b>	<b>1,138</b>	<b>20%</b>	<b>7%</b>	<b>19%</b>	<b>25%</b>	<b>22%</b>	<b>50%</b>	<b>18%</b>	<b>42%</b>	<b>48%</b>	<b>41%</b>	<b>11%</b>	<b>14%</b>

**Notes:** Percentage of service users in the clinical range (2, 3 or 4) for each HoNOS item on review collections. Due to most admission being less than 91 days, the data set for review collections in inpatient settings is relatively small.

**Interpretation:** The higher the percentage, the more prevalent the difficulty measured by the item is amongst service users.

**Graph 5c: Distribution of other mental health and behavioural problems in the clinical range by collection type: New Zealand, Jan - Dec 2025**



**Notes:** This is for service users in the clinical range (2, 3 or 4) for other mental health and behavioural problems item.

**Interpretation:** This shows the distribution of what is selected for other mental health and behavioural problems. Other mental health and behavioural problems provides clinicians with the opportunity to rate the most severe clinical problem not covered elsewhere from the following list: phobic, anxiety, obsessive-compulsive, stress, dissociative, somatoform, eating, sleep, sexual, other. Other conforms to an ICD or DSM classification. The most severe clinical problem can change for each collection.

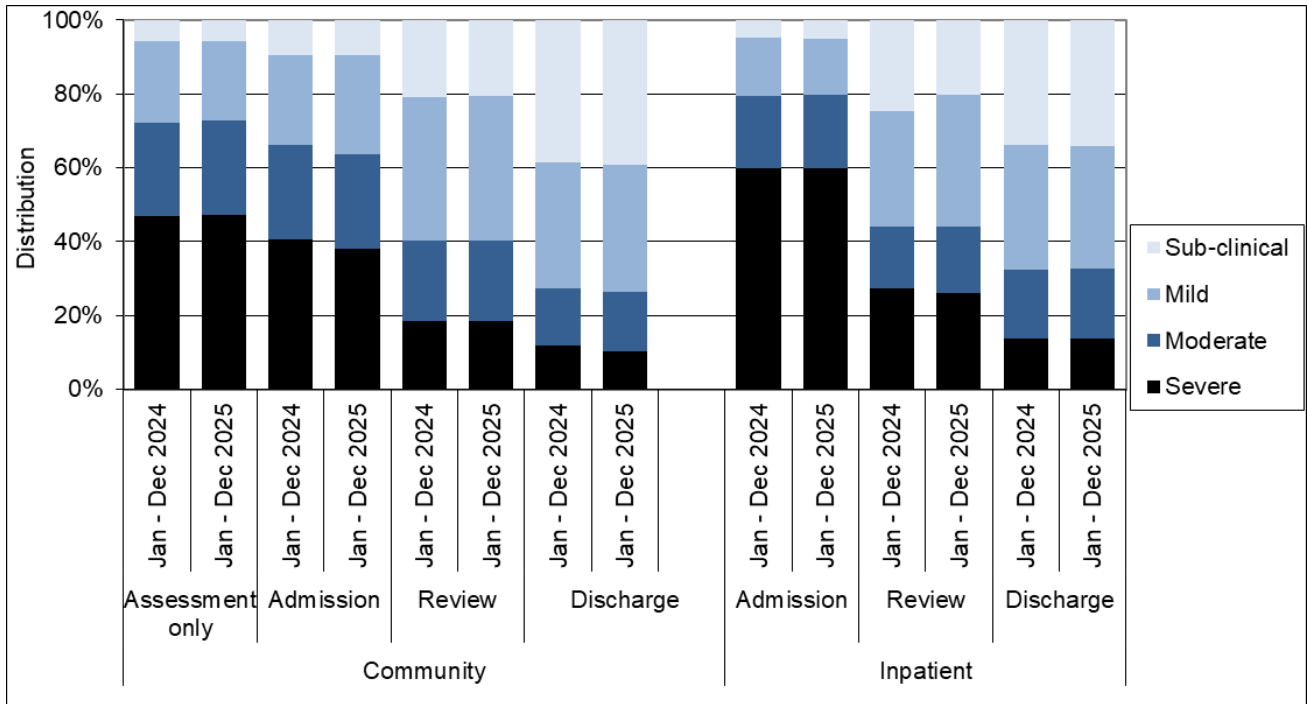
**Table 5c: Distribution of other mental health and behavioural problems in the clinical range (admission and review collections) by team: New Zealand, Jan - Dec 2025**

	Phobic	Anxiety	Obsessive-compulsive	Stress	Dissociative	Somatoform	Eating	Sleep	Sexual	Other	Number
<b>Community service</b>											
Alcohol and drug team	0%	35%	2%	24%	1%	0%	1%	27%	0%	4%	597
Child and youth team	0%	44%	5%	21%	1%	0%	7%	7%	0%	7%	136
Co-existing problem team	6%	38%	3%	24%	4%	0%	1%	21%	0%	3%	68
Community team	1%	43%	4%	22%	2%	1%	4%	16%	0%	6%	17,643
Early intervention team	1%	56%	2%	9%	2%	0%	4%	18%	1%	7%	390
Eating disorders team	0%	8%	0%	1%	0%	0%	81%	4%	0%	4%	662
Forensic team	0%	24%	0%	27%	0%	0%	0%	35%	0%	3%	33
Kaupapa Māori team	1%	40%	1%	20%	2%	1%	4%	27%	0%	2%	916
Maternal mental health team	0%	60%	5%	19%	1%	0%	2%	7%	0%	5%	1,714
Needs assessment and service coordination team	0%	30%	3%	31%	2%	0%	4%	16%	0%	12%	377
Older people team	2%	24%	2%	8%	2%	0%	4%	29%	2%	27%	51
Pacific people team	1%	34%	2%	21%	4%	0%	2%	27%	0%	8%	280
Specialty team	0%	38%	2%	15%	1%	0%	20%	21%	1%	2%	191
<b>Total</b>	<b>1%</b>	<b>42%</b>	<b>4%</b>	<b>21%</b>	<b>2%</b>	<b>1%</b>	<b>6%</b>	<b>16%</b>	<b>0%</b>	<b>6%</b>	<b>23,078</b>
<b>Inpatient service</b>											
Alcohol and drug team	2%	79%	0%	8%	0%	0%	1%	0%	0%	9%	96
Eating disorders team	0%	0%	0%	0%	0%	0%	95%	5%	0%	0%	22
Forensic team	0%	45%	5%	16%	2%	0%	7%	16%	4%	6%	83
Inpatient team	1%	25%	2%	24%	2%	0%	4%	31%	2%	10%	4,643
Maternal mental health team	0%	51%	0%	21%	1%	0%	0%	17%	0%	10%	72
Older people team	0%	33%	0%	17%	4%	0%	8%	25%	4%	8%	24
<b>Total</b>	<b>1%</b>	<b>26%</b>	<b>2%</b>	<b>24%</b>	<b>2%</b>	<b>0%</b>	<b>5%</b>	<b>29%</b>	<b>2%</b>	<b>10%</b>	<b>4,941</b>

**Notes:** This is for admission and review collections. This is for service users in the clinical range (2, 3 or 4) for other mental health and behavioural problems item.

**Interpretation:** The shows the distribution of what is selected for other mental health and behavioural problems.

**Graph 6: Index of Severity ratings for HoNOS by collection type: New Zealand, Jan - Dec 2024 and Jan - Dec 2025**



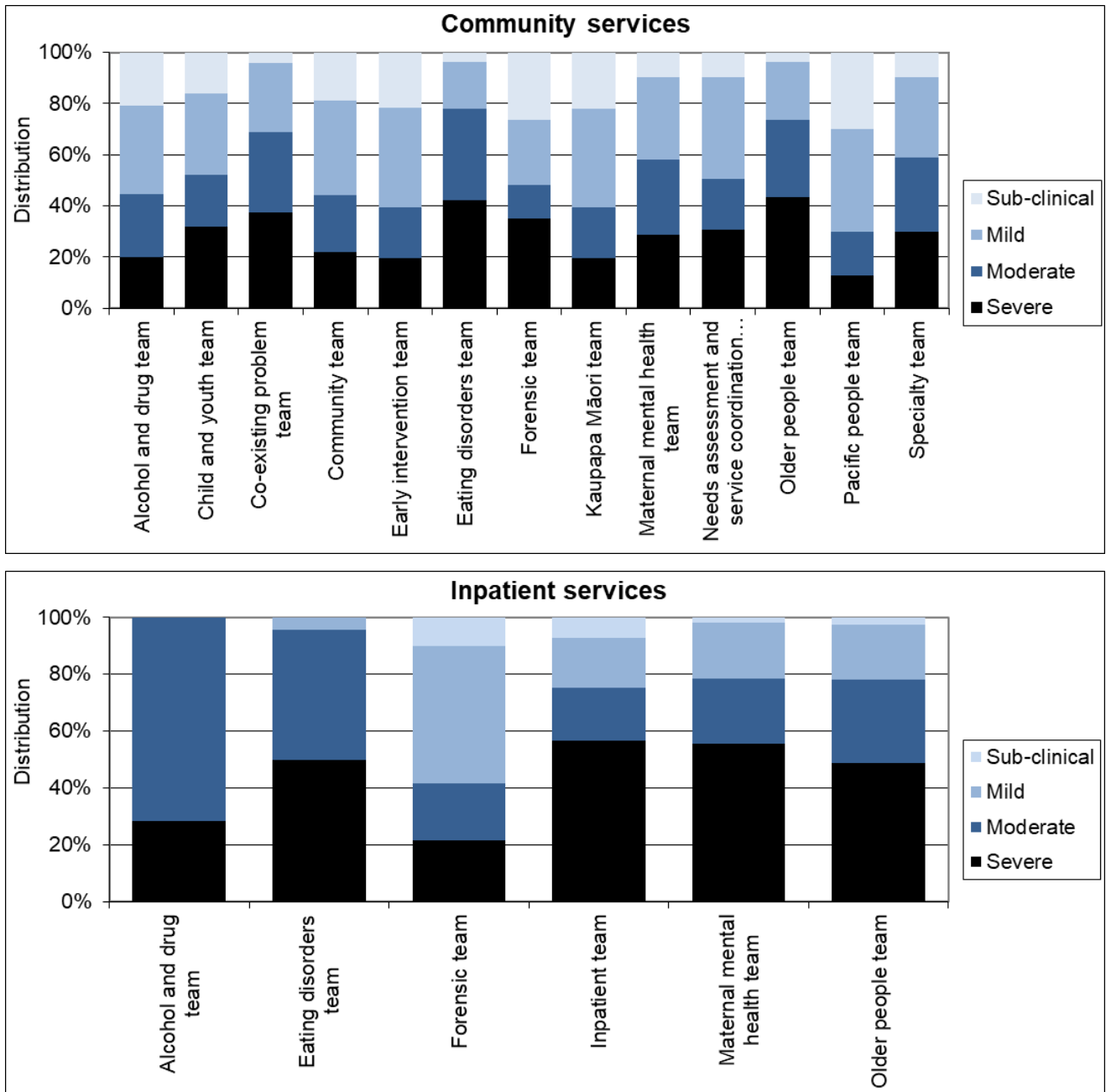
**Notes:** Community discharge does not include discharge to an inpatient unit. Index of Severity: Sub clinical = all items <2, mild = at least one item >1 and all items <3, moderate = at least one item >=3, severe = at least 2 items >=3 using first 10 items.

**Interpretation:** Darker bars indicate higher overall level of severity. More positive outcome is shown by larger decrease in darker sections of bar between admission and discharge.

## 2. Other measures of service activity

This section presents other information related to data collected in PRIMHD that may be helpful for understanding how teams are operating. This includes information relevant to caseload intensity and team activity.

**Graph 7: Index of Severity for HoNOS (admission and review collections) by team, New Zealand, Jan - Dec 2025**



**Notes:** Only data related to collection at admission and review is included so that results reflect the severity of service users during their engagement with the service. Index of Severity: Sub clinical = all items <2, mild = at least one item >1 and all items <3, moderate = at least one item >=3, severe = at least 2 items >=3 using first 10 items.

**Interpretation:** This graph gives an impression of the overall severity of the caseload for different teams at admission. The longer the darker bar, the higher the overall severity of the team's caseload.

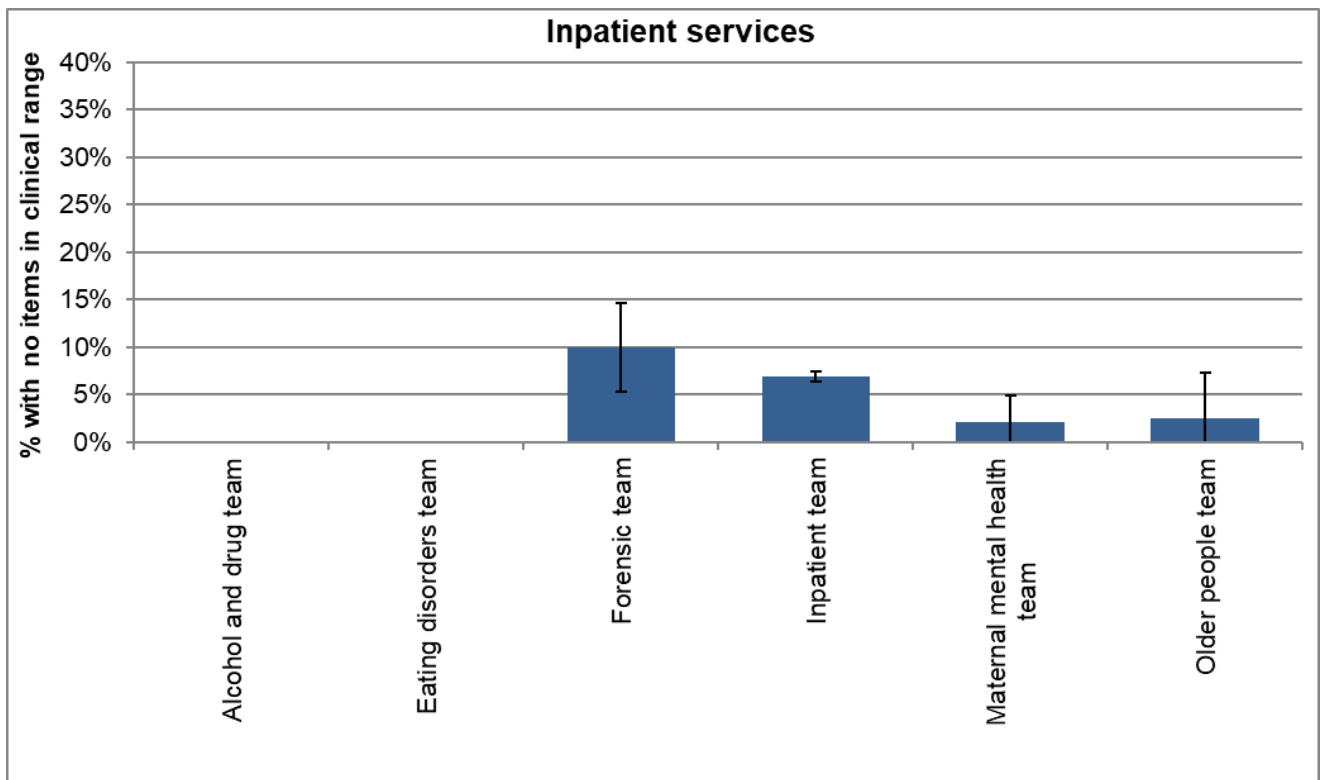
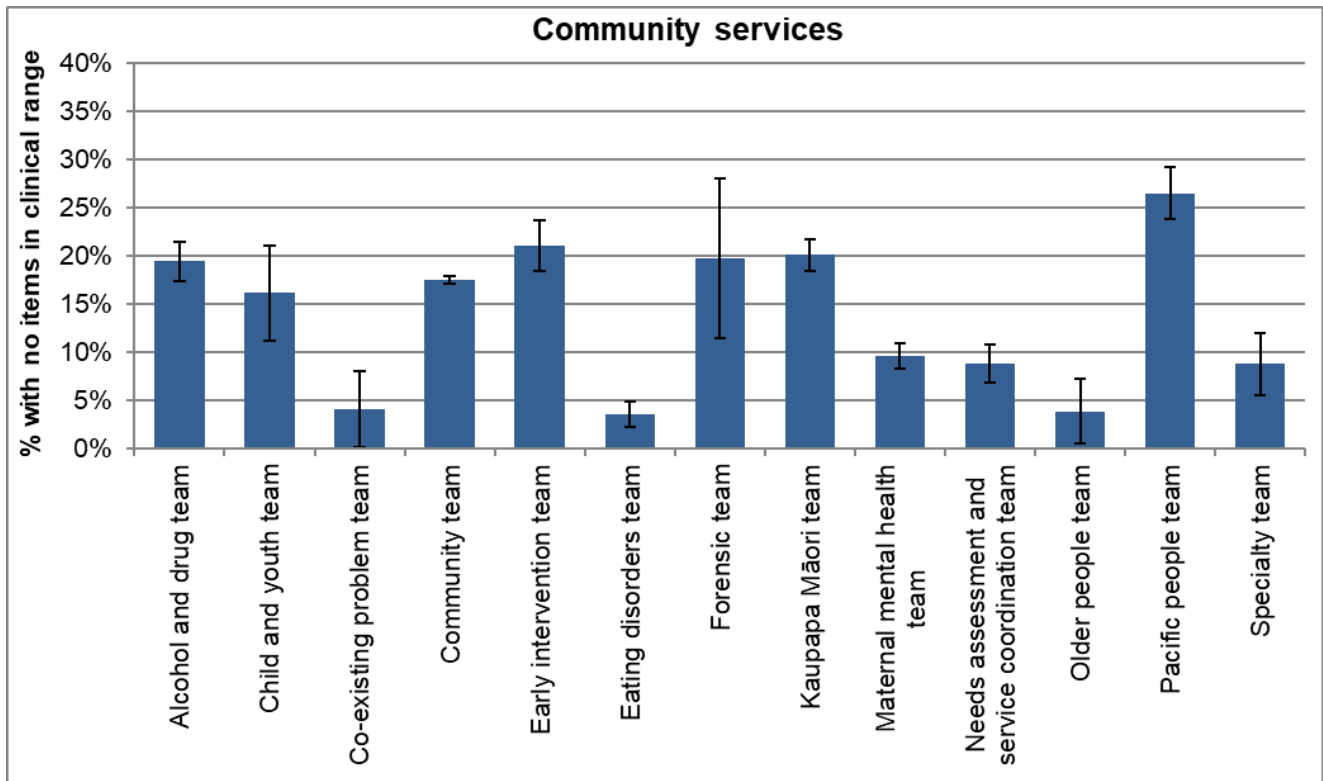
**Table 7: Index of Severity for HoNOS by collection type and team: New Zealand, Jan - Dec 2025**

Team type	Assessment only					Admission					Review					Discharge				
	Sub	Mild	Mod	Sev	N	Sub	Mild	Mod	Sev	N	Sub	Mild	Mod	Sev	N	Sub	Mild	Mod	Sev	N
<b>Community services</b>																				
Alcohol and drug team	6%	15%	27%	53%	304	5%	34%	24%	37%	302	25%	35%	25%	15%	1,130	26%	33%	21%	20%	149
Child and youth team	12%	19%	15%	54%	97	3%	31%	19%	47%	36	19%	32%	20%	29%	181	42%	29%	21%	9%	91
Co-existing problem team						7%	10%	33%	50%	30	3%	35%	30%	32%	69					
Community team	6%	21%	25%	48%	8,967	11%	27%	25%	37%	7,033	21%	40%	21%	18%	29,222	39%	34%	16%	11%	4,935
Early intervention team						9%	42%	19%	30%	160	24%	39%	20%	17%	759	43%	34%	14%	9%	119
Eating disorders team	0%	7%	32%	61%	44	1%	6%	40%	53%	280	5%	26%	33%	35%	447	22%	34%	29%	14%	152
Forensic team						33%	17%	8%	42%	24	24%	28%	15%	33%	67					
Kaupapa Māori team	8%	34%	28%	30%	61	13%	34%	18%	35%	242	23%	39%	20%	18%	2,034	39%	30%	16%	15%	128
Maternal mental health team	9%	30%	22%	40%	152	4%	22%	30%	44%	920	14%	41%	29%	16%	1,160	48%	37%	10%	5%	741
Needs assessment and service coordination team	9%	32%	29%	30%	133	10%	33%	18%	39%	61	10%	40%	20%	30%	724	5%	53%	21%	21%	38
Older people team						6%	15%	33%	46%	54	3%	28%	28%	41%	75	9%	30%	26%	35%	43
Pacific people team						21%	39%	18%	24%	200	32%	41%	17%	10%	835	51%	29%	18%	2%	94
Specialty team	7%	26%	31%	36%	371	4%	27%	31%	38%	78	12%	33%	28%	27%	219	43%	30%	3%	23%	30
<b>Total</b>	<b>6%</b>	<b>21%</b>	<b>26%</b>	<b>47%</b>	<b>10,181</b>	<b>10%</b>	<b>27%</b>	<b>26%</b>	<b>38%</b>	<b>9,431</b>	<b>21%</b>	<b>39%</b>	<b>22%</b>	<b>19%</b>	<b>36,951</b>	<b>39%</b>	<b>34%</b>	<b>16%</b>	<b>10%</b>	<b>6,541</b>
<b>Inpatient service</b>																				
Alcohol and drug team						0%	0%	71%	29%	182						1%	4%	75%	20%	179
Eating disorders team						0%	0%	48%	52%	21										
Forensic team						11%	26%	19%	44%	27	10%	53%	20%	17%	134	70%	20%	10%	0%	40
Inpatient team						5%	15%	18%	61%	7,193	22%	34%	18%	27%	996	35%	34%	17%	14%	5,385
Maternal mental health team						1%	20%	23%	56%	96						28%	43%	13%	16%	82
Older people team						3%	24%	29%	44%	34						28%	24%	28%	20%	25
<b>Total</b>						<b>5%</b>	<b>15%</b>	<b>20%</b>	<b>60%</b>	<b>7,554</b>	<b>20%</b>	<b>36%</b>	<b>18%</b>	<b>26%</b>	<b>1,139</b>	<b>34%</b>	<b>33%</b>	<b>19%</b>	<b>14%</b>	<b>5,726</b>

**Notes:** Sub = sub clinical, Mild = mild, Mod = moderate, Sev = severe on Index of Severity. Only admission collection data is included so that results reflect the severity of service users during their engagement with the service. Index of Severity: Sub clinical = all items <2, mild = at least one item >1 and all items <3, moderate = at least one item >=3, severe = at least 2 items >=3 using first 10 items. Community discharge does not include discharge to an inpatient unit.

**Interpretation:** Larger percentages in the columns to the right for each type of collection, the higher the overall severity of the team's caseload.

**Graph 8: Collections with no HoNOS items in clinical range: New Zealand, Jan - Dec 2025**



**Notes:** Includes admission and review collections. Shows percentage of service users with all HoNOS items less than two, ie no HoNOS items in the clinical range.

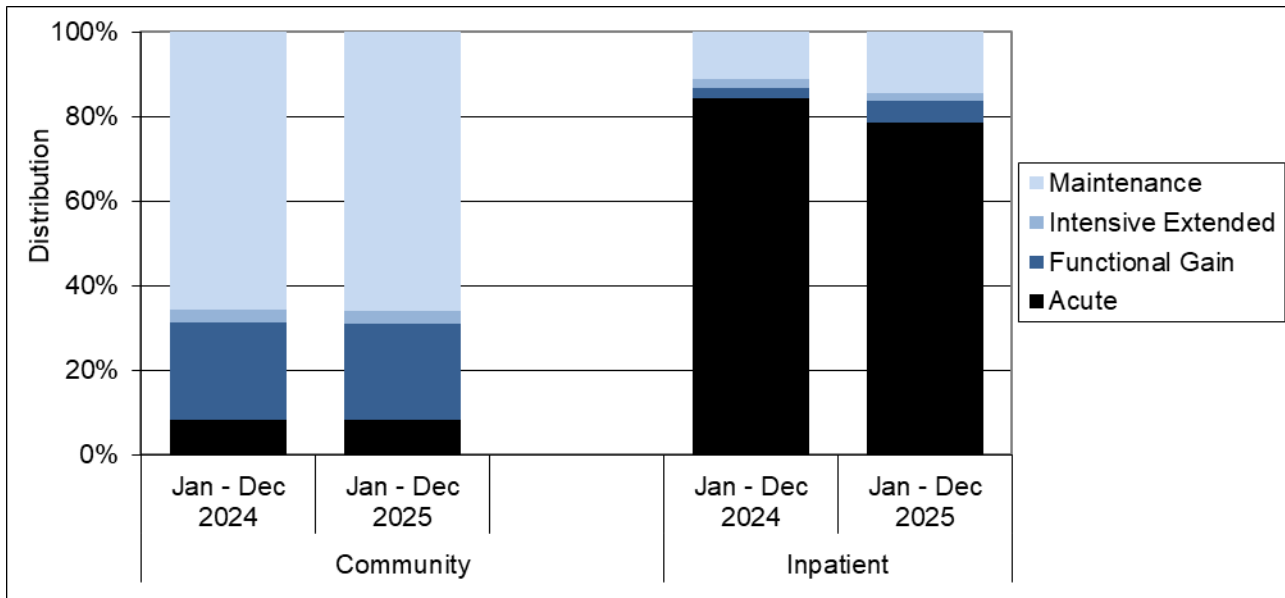
**Interpretation:** There are a variety of reasons that may make it appropriate for service users to remain in the service even though they show no HoNOS items in the clinical range. However, teams showing a larger or substantial percentage of service users with no HoNOS items in the clinical range could benefit from reviewing these cases to ensure that the service remains appropriate for this service user.

**Table 8: Collections with no HoNOS items in clinical range: New Zealand, Jan - Dec 2025**

Team type	Number of collections with no items in clinical range	Percentage with no items in clinical range
<b>Community services</b>		
Alcohol and drug team	278	19%
Child and youth team	35	16%
Co-existing problem team	4	4%
Community team	6,348	18%
Early intervention team	193	21%
Eating disorders team	26	4%
Forensic team	18	20%
Kaupapa Māori team	458	20%
Maternal mental health team	200	10%
Needs assessment and service coordination team	69	9%
Older people team	5	4%
Pacific people team	274	26%
Specialty team	26	9%
<b>Total</b>	<b>7,936</b>	<b>17%</b>
<b>Inpatient services</b>		
Alcohol and drug team	0	0%
Eating disorders team	0	0%
Forensic team	16	10%
Inpatient team	566	7%
Maternal mental health team	2	2%
Older people team	1	2%
<b>Total</b>	<b>585</b>	<b>7%</b>

**Notes:** For further information see notes for graph 8.

**Graph 9: Focus of care categories: New Zealand, Jan - Dec 2024 and Jan - Dec 2025**



**Notes:** Data from review and discharge collections.

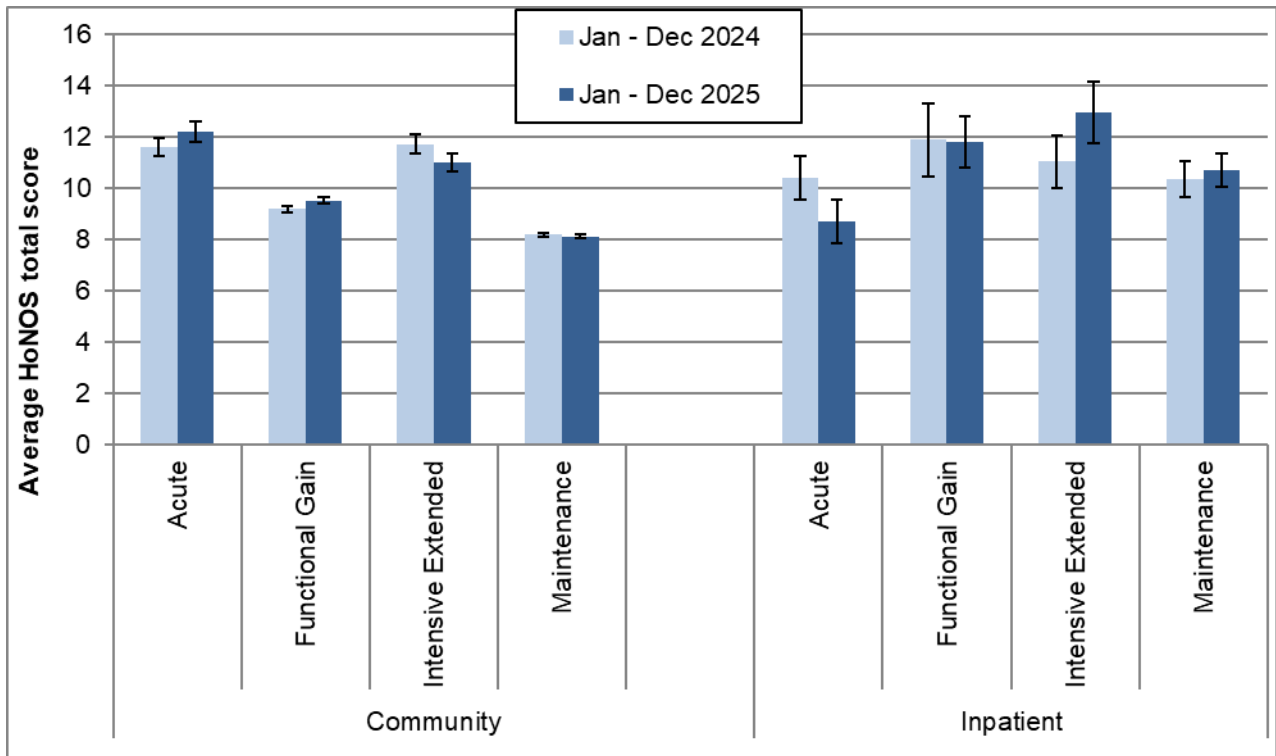
**Interpretation:** Darker bars indicate more intensive involvement in care, so a longer, darker bar in general suggests more intensive working. A longer functional gain bar and shorter maintenance bar potentially suggests more recovery focused ways of working.

**Table 9: Focus of care categories by team: New Zealand, Jan - Dec 2024 and Jan - Dec 2025**

Team type	Acute		Functional gain		Intensive extended		Maintenance		Number of collections	
	Last	This	Last	This	Last	This	Last	This	Last	This
<b>Community services</b>										
Alcohol and drug team	6%	6%	18%	12%	3%	8%	73%	73%	1,357	1,288
Child and youth team	3%	7%	31%	21%	7%	8%	59%	63%	274	239
Co-existing problem team	12%	18%	50%	29%	4%	0%	35%	53%	26	34
Community team	9%	9%	22%	22%	3%	3%	66%	66%	33,983	32,937
Early intervention team	4%	5%	37%	33%	2%	2%	57%	60%	970	900
Eating disorders team	7%	10%	49%	50%	9%	12%	36%	28%	642	574
Forensic team	9%	5%	16%	8%	3%	4%	72%	83%	122	77
Kaupapa Māori team	4%	3%	11%	8%	2%	1%	82%	88%	2,003	2,115
Maternal mental health team	6%	6%	54%	63%	2%	1%	37%	31%	1,654	1,824
Needs assessment and service coordination team	4%	3%	11%	12%	3%	6%	82%	79%	694	686
Older people team	9%	7%	9%	8%	1%	2%	81%	84%	129	120
Pacific people team	6%	5%	15%	13%	0%	0%	79%	82%	946	872
Specialty team	7%	13%	35%	33%	2%	4%	56%	50%	335	259
<b>Total</b>	<b>8%</b>	<b>8%</b>	<b>23%</b>	<b>23%</b>	<b>3%</b>	<b>3%</b>	<b>66%</b>	<b>66%</b>	<b>43,156</b>	<b>41,958</b>
<b>Inpatient services</b>										
Alcohol and drug team	100%	100%	0%	0%	0%	0%	0%	0%	189	179
Forensic team	8%	6%	6%	3%	35%	32%	51%	58%	181	161
Inpatient team	86%	80%	2%	5%	1%	1%	10%	14%	6,475	5,966
Maternal mental health team	81%	96%	9%	1%	0%	0%	9%	3%	64	75
Older people team	63%	63%	0%	0%	4%	6%	33%	31%	24	32
<b>Total</b>	<b>84%</b>	<b>79%</b>	<b>3%</b>	<b>5%</b>	<b>2%</b>	<b>2%</b>	<b>11%</b>	<b>14%</b>	<b>6,952</b>	<b>6,426</b>

**Notes:** For further information see notes for Graph 9.

**Graph 10: HoNOS total score (review collections) by focus of care: New Zealand, Jan - Dec 2024 and Jan - Dec 2025**



**Notes:** This data is just for review collections.

**Interpretation:** Points are significantly different if error bars do not overlap. A general downward trend in scores from acute to maintenance focus of care might be expected.

**Table 10: HoNOS total score (review collections) by focus of care by team: New Zealand, Jan - Dec 2025**

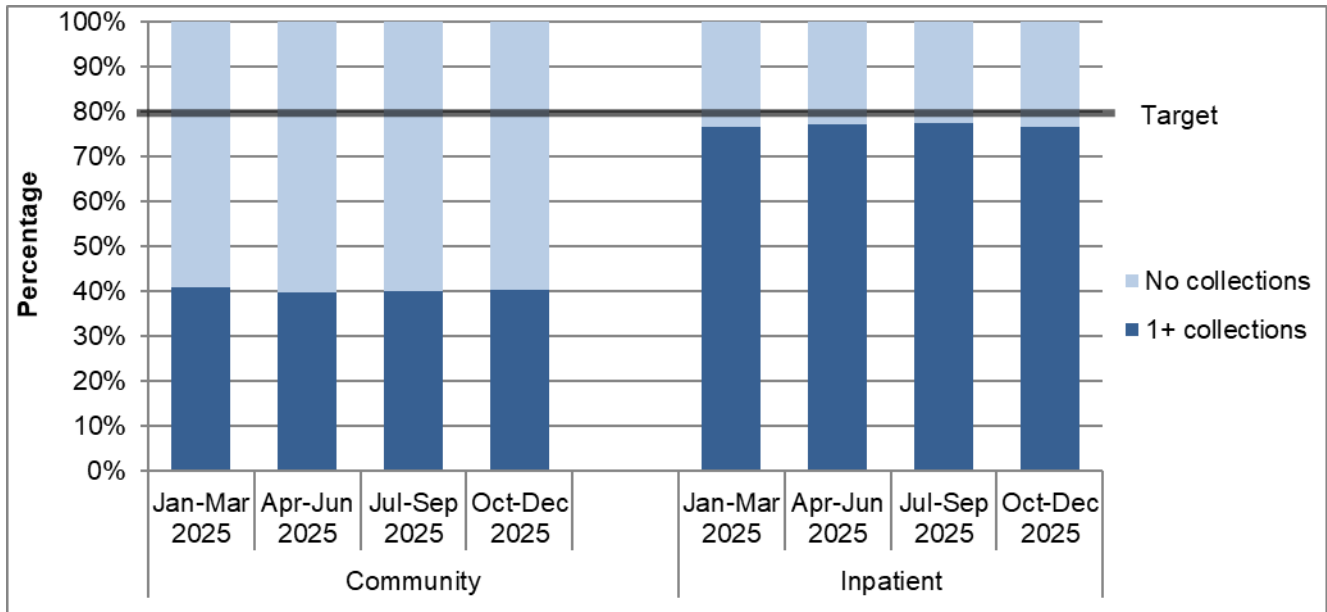
Team type	Acute			Functional Gain			Intensive Extended			Maintenance		
	N	Mean	CI	N	Mean	CI	N	Mean	CI	N	Mean	CI
<b>Community services</b>												
Alcohol and drug team	29	16.1	12.5-19.8	112	10.7	9.8-11.7	87	10.1	8.8-11.5	852	6.5	6.1-6.9
Child and youth team				28	11.3	9.0-13.6				116	8.7	7.7-9.7
Community team	1,128	11.6	11.2-12.1	5,841	9.5	9.4-9.7	874	10.7	10.3-11.1	19,159	8.1	8.0-8.2
Early intervention team	24	18.1	14.1-22.1	247	9.6	8.9-10.4	20	13.9	10.7-17.0	426	6.1	5.7-6.6
Eating disorders team	45	12.6	11.2-14.1	175	12.0	11.1-12.9	53	13.4	11.7-15.0	140	9.2	8.4-10.1
Forensic team										52	9.0	7.1-10.8
Kaupapa Māori team	42	15.3	13.0-17.6	156	12.0	10.9-13.0	27	13.6	11.2-16.0	1,677	9.4	9.1-9.7
Maternal mental health team	31	9.8	7.7-11.8	710	7.5	7.2-7.8				327	6.7	6.3-7.1
Needs assessment and service coordination team				71	11.0	9.9-12.0	34	13.8	11.0-16.6	520	11.2	10.6-11.7
Older people team										61	11.7	9.5-13.8
Pacific people team				89	9.7	8.8-10.6				658	6.1	5.7-6.4
Specialty team				76	11.5	9.9-13.1				119	11.8	10.7-13.0
<b>Total</b>	<b>1,358</b>	<b>12.2</b>	<b>11.8-12.6</b>	<b>7,531</b>	<b>9.5</b>	<b>9.4-9.6</b>	<b>1,130</b>	<b>11.0</b>	<b>10.6-11.4</b>	<b>24,142</b>	<b>8.1</b>	<b>8.0-8.2</b>
<b>Inpatient services</b>												
Forensic team							50	12.1	10.5-13.6	80	11.2	9.8-12.5
Inpatient team	376	8.7	7.8-9.5	148	11.8	10.8-12.8	46	13.6	11.6-15.5	313	10.5	9.8-11.3
<b>Total</b>	<b>381</b>	<b>8.7</b>	<b>7.9-9.5</b>	<b>150</b>	<b>11.8</b>	<b>10.8-12.8</b>	<b>98</b>	<b>12.9</b>	<b>11.7-14.2</b>	<b>396</b>	<b>10.7</b>	<b>10.1-11.4</b>

**Notes:** For further information see notes for Graph 10.

### 3. Collection completion and validity

This section presents information about the completeness and validity of the data on which the remainder of this report is based. It also shows the current targets for the variables presented.

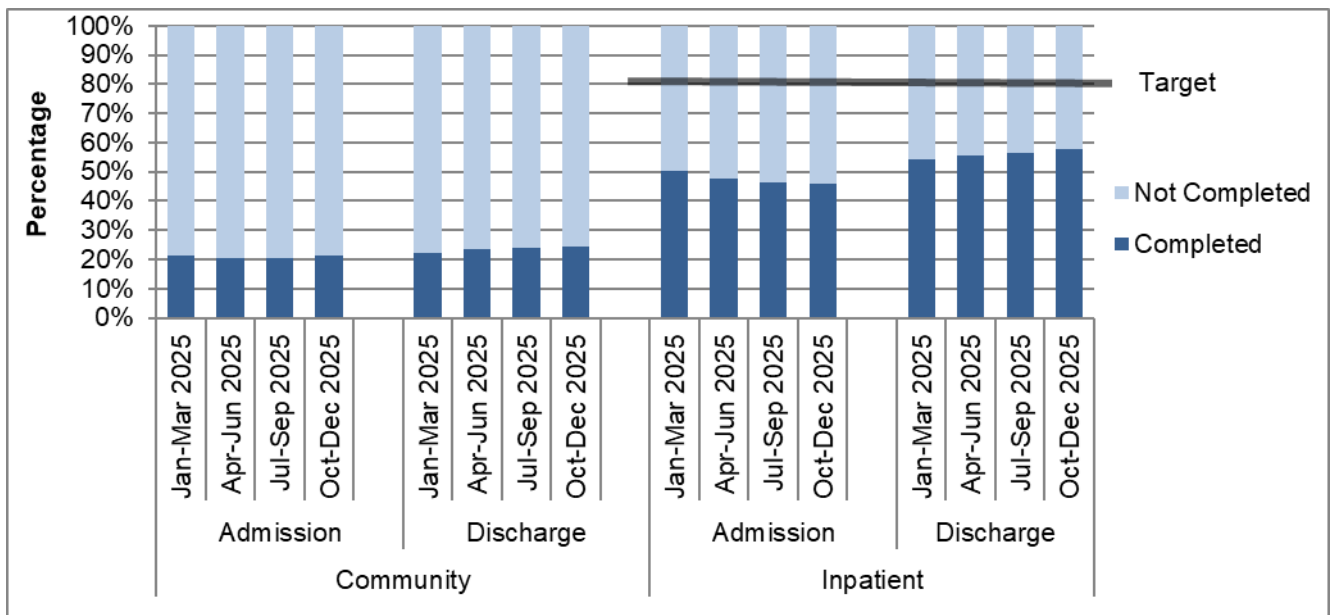
**Graph 11: Percentage of service users with at least one collection during the period in a quarter: New Zealand, Jan – Dec 2025 (18 to 64 years)**



**Interpretation:** The longer the dark part of the bar, the more completely the data set includes all service users, and the more meaningful and representative the graphs, tables, and analyses using these data will be. This data is approximate due to movement of service users between teams and similar variations; however, it does provide a reasonably accurate representation of completion of measures. Only data with valid collections is included.

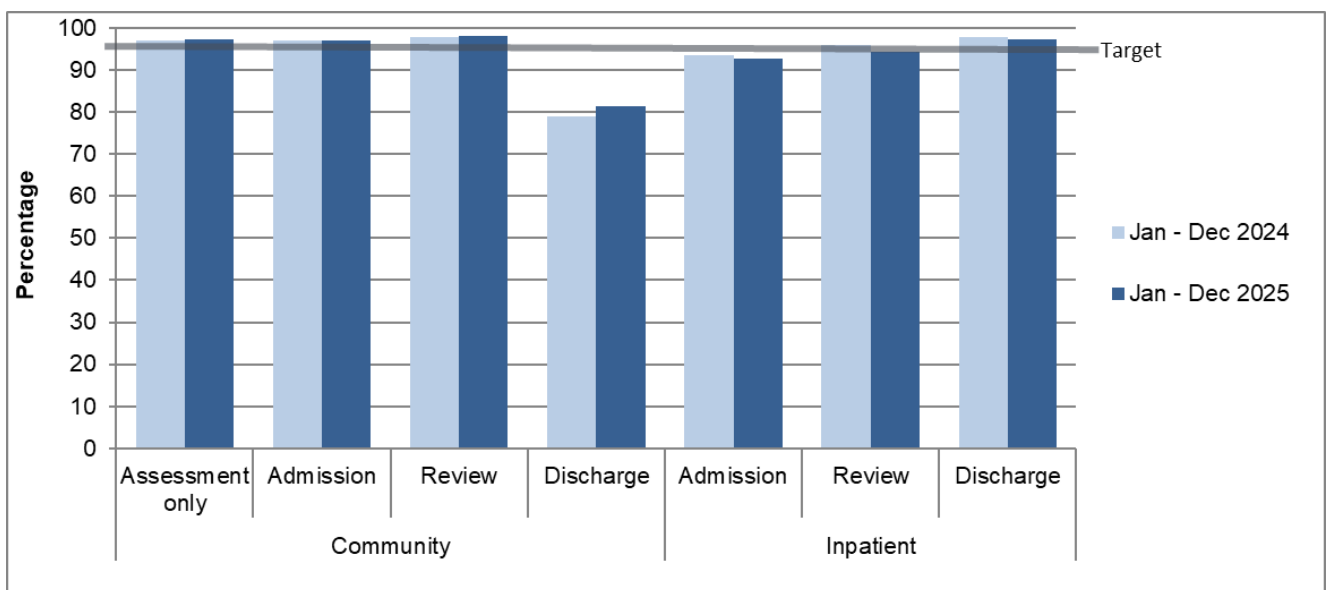
**Target:** To meet or exceed the target shown on the graph for the percentage of service users with at least one collection within the period.

**Graph 12: Percentage of service users with admission and discharge collections completed by quarter: New Zealand, Jan – Dec 2025 (18 to 64 years)**



**Interpretation:** The longer the dark bar, the larger the percentage of admission and discharge that had the relevant data collection type. Data is approximate due to movement of service users between teams and similar variations; however, it does provide a reasonably accurate representation of completion of measures. Only data with valid collections is included.

**Graph 13: Percentage of valid collections, HoNOS: New Zealand, Jan - Dec 2024 and Jan - Dec 2025**



**Notes:** Valid = Two or fewer of the 12 items scored as unknown or missing. Discharge excludes collection types for lost to care, discharge dead and brief episode of care. Collection in drug and alcohol teams is not required, therefore AOD data is excluded.

**Interpretation:** The longer the dark lines, the higher the percentage of valid scores.

**Target:** Aim for 95% valid collections.

**Table 13: Invalid collections by team, by HoNOS item: New Zealand, Jan - Dec 2025**

Team type	% Invalid			Number of invalid ratings by HoNOS item												Total number
	Adm	Rev	Dch	1	2	3	4	5	6	7	8	9	10	11	12	
<b>Community services</b>																
Child and youth team	3%	1%	5%	5	5	9	6	6	7	5	5	5	5	6	6	417
Community team	3%	2%	19%	2,223	2,355	2,920	2,476	2,413	2,455	2,473	2,544	2,564	2,569	2,713	3,033	54,905
Early intervention team	4%	1%	22%	59	60	70	71	56	66	59	80	61	65	73	98	1,194
Eating disorders team	0%	1%	8%	16	17	22	16	17	15	21	17	21	19	18	22	967
Forensic team	0%	4%	0%	2	3	0	2	4	3	3	1	0	2	1	3	120
Kaupapa Māori team	4%	1%	28%	115	129	129	129	117	133	122	129	122	122	136	129	2,703
Maternal mental health team	1%	2%	18%	215	213	224	215	211	211	209	212	211	222	236	219	3,237
Needs assessment and service coordination team	0%	1%	8%	8	11	11	8	8	9	10	12	9	9	15	14	996
Older people team	0%	1%	2%	3	3	2	3	2	5	3	3	3	2	4	2	197
Pacific people team	0%	1%	17%	37	39	50	39	38	46	41	49	36	34	32	54	1,255
Specialist psychotherapy team				1	1	1	1	1	1	1	1	1	1	1	1	29
Specialty team	1%	2%	9%	10	10	23	11	10	17	15	13	15	11	18	22	723
<b>Total</b>	<b>3%</b>	<b>2%</b>	<b>19%</b>	<b>2,695</b>	<b>2,848</b>	<b>3,462</b>	<b>2,978</b>	<b>2,884</b>	<b>2,970</b>	<b>2,965</b>	<b>3,067</b>	<b>3,049</b>	<b>3,062</b>	<b>3,254</b>	<b>3,604</b>	<b>66,772</b>
<b>Inpatient services</b>																
Eating disorders team	0%			0	0	0	0	0	0	0	0	0	0	0	0	37
Forensic team	16%	0%	3%	3	1	4	1	4	3	3	4	6	2	6	8	206
Inpatient team	7%	6%	3%	147	268	617	424	300	290	400	546	626	463	986	1,138	14,238
Maternal mental health team	0%		0%	0	0	3	0	0	2	0	0	1	1	4	5	179
Older people team	8%		11%	2	3	5	4	2	4	3	5	6	2	15	15	74
<b>Total</b>	<b>7%</b>	<b>6%</b>	<b>3%</b>	<b>152</b>	<b>272</b>	<b>629</b>	<b>429</b>	<b>306</b>	<b>299</b>	<b>406</b>	<b>555</b>	<b>639</b>	<b>468</b>	<b>1,011</b>	<b>1,166</b>	<b>14,735</b>

**Notes:** Per cent (%) invalid collections = the percentage of collections that had three or more of the 12 items scored as unknown or missing. Number of invalid ratings by HoNOS item = for each of the HoNOS items, the number of collections for which that item was unknown or missing. Discharge excludes collection types for lost to care, deceased and brief episode of care. Collection in drug and alcohol teams is not required, therefore AOD data is excluded. **Interpretation:** The lower the per cent invalid, the higher the percentage of valid scores. The lower the number of invalid collections by HoNOS item, the more collections that have valid data on that HoNOS item. **Target:** Aim for 95% valid collections (5% invalid collections) or better. Aim for as few invalid items as possible, with all items having a similar validity rate.