

PRIMHD summary report - HoNOS

Health of the Nation Outcomes Scales - working age adults report for New Zealand

This report summarises national Programme for the Integration of Mental Health Data (PRIMHD) data submitted by district health boards (DHBs). In particular, it presents Health of the National Outcomes Scale working aged adults (HoNOS) data, from services where HoNOS is the primary measure.

This report is organised into three major sections that provide information about:

1. **Collection completion and validity:** This details the completeness of the data set provided by your mental health services. This is important because it indicates how valid and reliable the data sets are likely to be. The less complete the data set, the less valid the information is likely to be.
2. **Outcomes related information:** This provides indications about what changes have occurred for service users between entering and leaving the service. Outcome is assessed by comparing the group admitted and the group discharged from the service in the same time period. This should provide a reasonable indication of outcomes achieved unless the service user mix has changed significantly over the usual period for which service is delivered.
3. **Service related information:** This provides information about the services, such as the overall severity of service users who use different services.

In many cases the data is presented graphically for New Zealand, and then presented as a table for the individual team types (see team type classification factsheet).

The time period covered differs for the different data presented. See the title or the notes under the graphs or tables for information about the time period covered. Unless otherwise stated, the notes under the graphs also apply to the corresponding table.

For all graphs and tables, if there are less than twenty cases in the data set, then the information is not presented. This is because small samples frequently provide inaccurate and potentially misleading results. See the notes and user guide for other important information about the graphs and tables.

Where appropriate, the statistical **confidence interval** is presented. This is shown by error bars (small lines above and below the average) on the graphs, and a score range in some tables. As a rule of thumb, if the confidence intervals of two data points do not overlap, the two points can be considered to be significantly different. If the confidence intervals of the data points do overlap, we assume the points are not significantly different. It is important to note that statistical significance may not indicate a clinically significant difference.

See the associated user guide for more information about how to understand and use the data presented in this report.

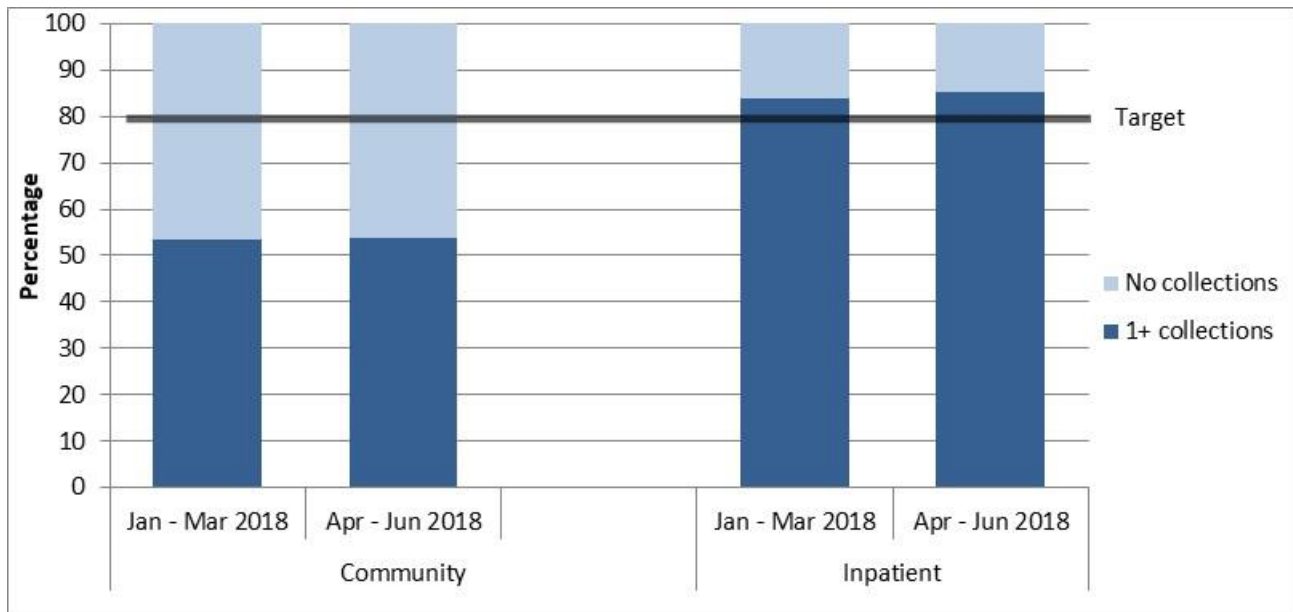
Data for graphs 1 and 2 was extracted 10 October 2018 from PRIMHD by the Ministry of Health and formatted by Te Pou. The data for graphs and tables 3 to 12 was extracted 10 October 2018 from PRIMHD by the Ministry of Health, then analysed and formatted by Te Pou.

Please note: For this period a few DHBs have incomplete data which will affect New Zealand totals.

1. Collection completion and validity

This section presents information about the completeness and validity of the data on which the remainder of this report is based. It also shows the current targets for the variables presented.

Graph 1: Percentage of service users with at least one collection during the period, New Zealand, Jan - Mar 2018 and Apr - Jun 2018 (18 to 64 years)

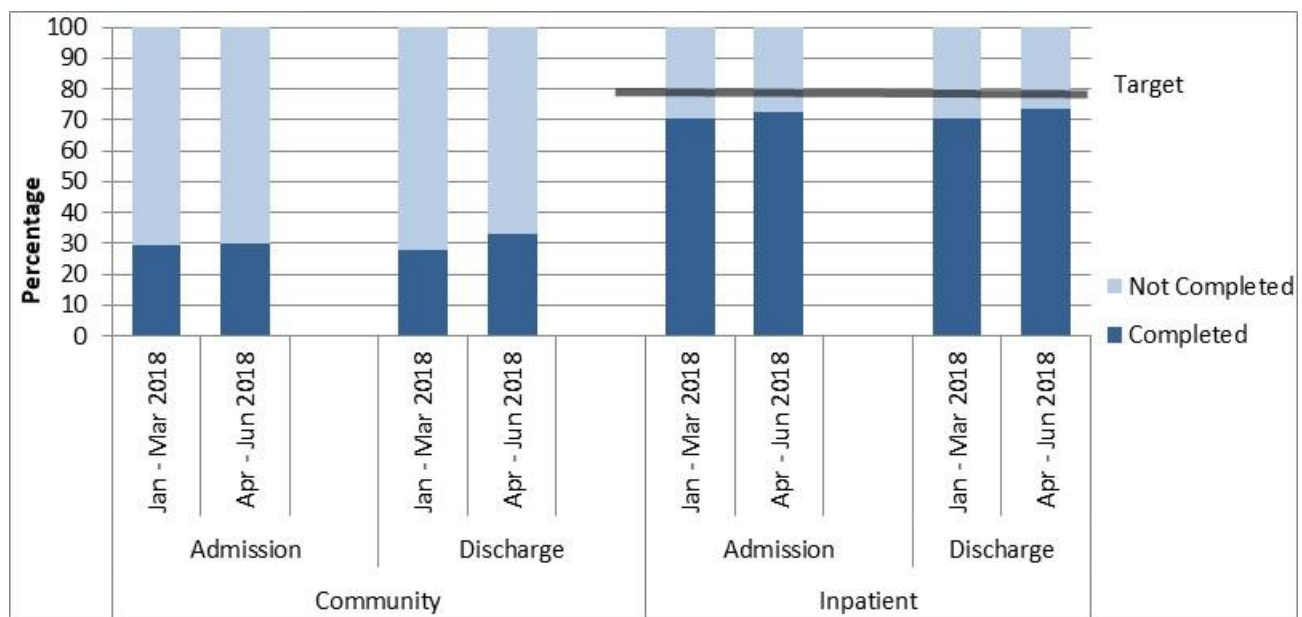


Notes: Community compliance is affected by crisis teams completing triage or brief assessment type activity which is not a comprehensive assessment.

Interpretation: The longer the dark part of the bar, the more completely the data set includes all service users, and the more meaningful and representative the graphs, tables, and analyses using this data will be. The data is approximate due to movements of service users between teams and similar variations; however, it does provide a reasonably accurate representation of completion of measures. The data only includes valid collections.

Target: To meet or exceed the target shown on the graph for the percentage of service users with at least one collection within the period.

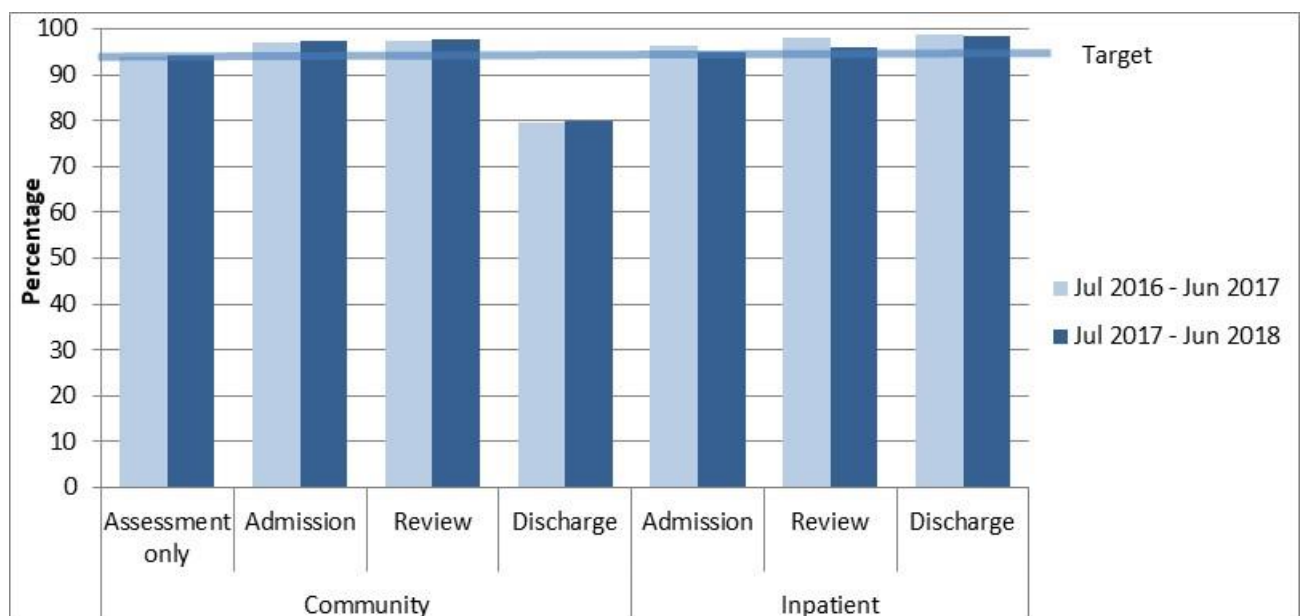
Graph 2: Percentage of service users with admission and discharge collections completed, New Zealand, Jan - Mar 2018 and Apr - Jun 2018 (18 to 64 years)



Notes: Community compliance is affected by crisis teams completing triage or brief assessment type activity which is not a comprehensive assessment.

Interpretation: The longer the dark bar, the larger the percentage of admission and discharge that had the relevant data collection type. Data is approximate due to movements of service users between teams and similar variations; however, it does provide a reasonably accurate representation of completion of measures. The data only includes valid collections.

Graph 3: Percentage of valid collections, HoNOS, New Zealand, Jul 2016 - Jun 2017 and Jul 2017 - Jun 2018



Notes: Valid = Two or fewer of the 12 items scored as unknown or missing. Discharge exclude collection types for lost to care, discharge dead and brief episode of care. Collection in drug and alcohol teams is not required, therefore AOD data is excluded.

Interpretation: The longer the dark lines, the higher the percentage of valid scores.

Target: Aim for 95% valid collections.

Table 3: Invalid collections by team, by HoNOS item, New Zealand, Jul 2017 - Jun 2018

Team type	% Invalid			Number of invalid ratings by HoNOS item												Total number
	Adm	Rev	Dch	1	2	3	4	5	6	7	8	9	10	11	12	
Community services																
Child and youth team	5%	3%	13%	24	26	28	25	25	26	25	26	23	25	26	27	451
Community team	3%	2%	20%	3,888	3,954	4,653	4,040	4,001	4,061	4,056	4,166	4,122	4,145	4,403	4,410	73,394
Early intervention team	0%	0%		4	3	3	4	3	3	3	4	3	3	3	3	113
Eating disorders team	1%	1%	15%	52	50	53	52	50	47	48	48	50	48	54	54	976
Forensic team	9%	1%	22%	101	102	119	103	103	105	107	102	107	106	111	108	661
Intellectual disability dual diagnosis team		0%		5	6	6	6	7	7	6	6	7	7	7	7	66
Kaupapa Māori team	4%	4%	26%	266	266	310	270	277	282	272	293	274	288	282	303	4,400
Maternal mental health team	2%	3%	18%	308	317	343	314	311	313	314	310	315	315	311	311	4,335
Older people team	1%	2%	7%	7	9	7	13	6	16	12	16	7	7	11	11	407
Pacific people team	3%	1%	24%	60	61	78	59	62	62	65	90	67	79	73	89	1,858
Residential/accommodation team				0	0	0	0	0	0	0	0	0	0	0	0	20
Specialist psychotherapy team				1	1	2	2	2	2	2	2	2	2	2	2	30
Specialty team	2%	4%	16%	33	40	41	39	39	44	40	51	75	82	134	99	949
Total	6%	3%	2%	4,749	4,835	5,643	4,927	4,886	4,968	4,950	5,114	5,052	5,107	5,417	5,424	87,664

Team type	% Invalid			Number of invalid ratings by HoNOS item												Total number
	Adm	Rev	Dch	1	2	3	4	5	6	7	8	9	10	11	12	
Inpatient services																
Eating disorders team	0%		0%	0	0	0	0	0	0	0	0	1	0	1	0	55
Forensic team		0%		0	0	1	0	0	3	2	1	0	1	0	0	121
Inpatient team	5%	4%	2%	166	254	584	411	293	312	379	623	515	419	817	1,050	19,659
Maternal mental health team	13%		6%	15	15	20	18	13	16	15	16	20	20	20	21	168
Older people team	5%		5%	1	2	3	1	2	6	4	6	2	3	14	14	84
Total	5%	4%	2%	182	271	608	430	308	337	400	646	538	443	852	1,085	20,089

Notes: Percentage of invalid collections = the percentage of collections that had three or more of the 12 items scored as unknown or missing. Number of invalid ratings by HoNOS item = for each of the HoNOS items, the number of collections for which that item was unknown or missing. Discharge excludes collection types for lost to care, deceased and brief episode of care. Collection in drug and alcohol teams is not required, therefore AOD data is excluded.

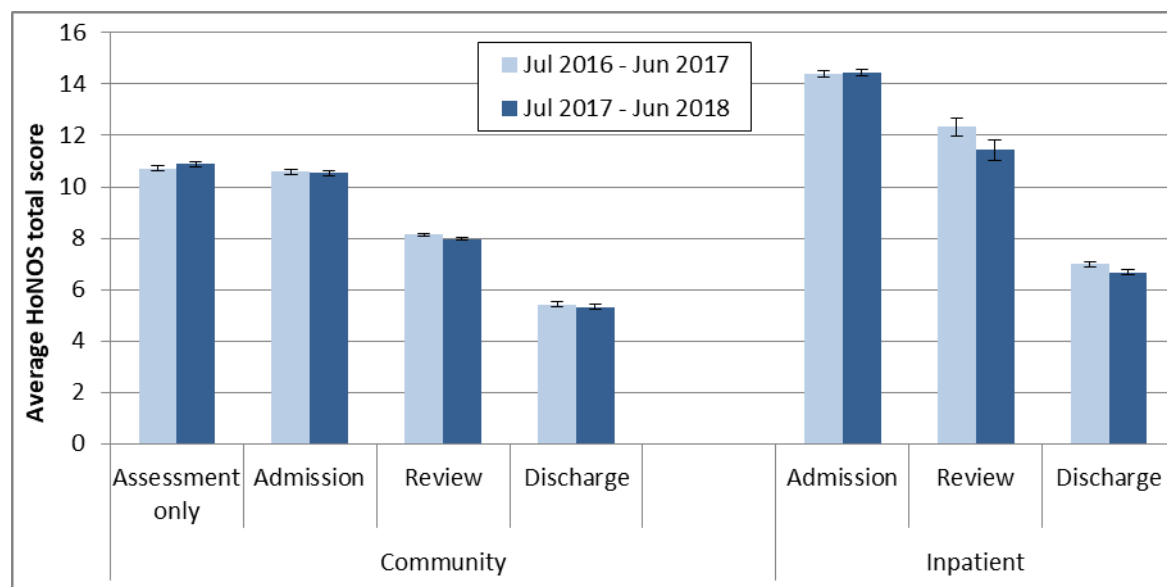
Interpretation: The lower the percentage of invalid collections by team, the higher the percentage of valid scores. The lower the number of invalid collections by HoNOS item, the more collections that have valid data on that HoNOS item.

Target: Aim for 95% valid collections (5% invalid collections) or better. Aim for as few invalid items as possible, with all items having a similar validity rate.

2. Outcomes - changes in service user status

This section presents HoNOS data indicating the status of service users at different stages of their contact with DHB mental health services. Graph and Table 4 show results from HoNOS total scores. Graphs and Tables 5 to 7B show results related to the percentage of HoNOS items in the clinical range. Graph and Table 8 show results from the Index of Severity derived from HoNOS scores.

Graph 4: Average HoNOS total score (12 items) by collection type, New Zealand, Jul 2016 - Jun 2017 and Jul 2017 - Jun 2018



Notes: Error bars indicate the confidence intervals around the data point. If error bars overlap the data points are not significantly different. Community discharge does not include discharge to an inpatient unit.

Interpretation: Decrease between admission and discharge is an indication of the outcomes achieved by the service user and service. The greater the decrease between admission and discharge, and the lower the average HoNOS score at discharge, the more positive the outcome.

Target: A greater decrease from admission to discharge and lower average rating at discharge.

Table 4: Average HoNOS total score (12 items), by collection type and team, New Zealand, Jul 2017 - Jun 2018

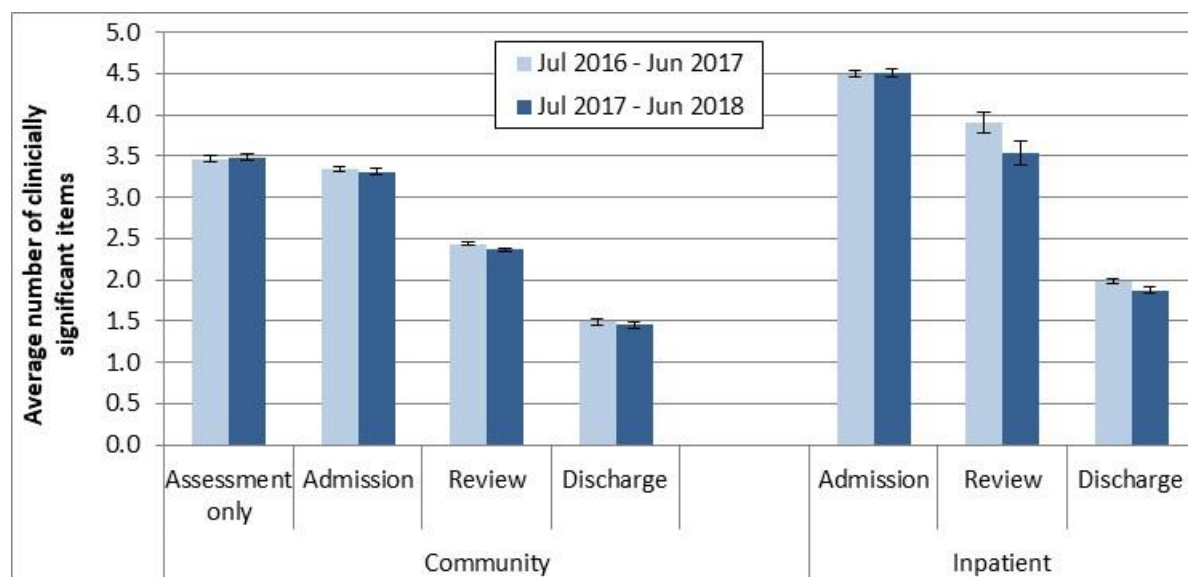
Team type	Assessment only			Admission			Review			Discharge		
	N	Mean	CI	N	Mean	CI	N	Mean	CI	N	Mean	CI
Community services												
Alcohol and drug team	431	12.6	12.0-13.1	546	9.9	9.5-10.4	765	6.3	6.0-6.7	261	5.1	4.5-5.6
Child and youth team	36	8.8	7.0-10.6	42	10.2	8.8-11.7	267	9.2	8.6-9.9	76	5.2	4.2-6.3
Co-existing problem team							27	10.3	8.3-12.2			
Community team	9,686	10.9	10.8-11.0	13,137	10.7	10.6-10.7	36,093	8.1	8.0-8.1	6,989	5.5	5.4-5.6
Eating disorders team	32	8.5	7.1-9.9	71	9.5	8.1-10.9	21	10.4	7.5-13.4	174	6.0	5.2-6.7
Eating disorders team				281	11.0	10.4-11.6	348	10.1	9.5-10.7			
Forensic team				106	10.0	9.1-11.0	194	7.0	6.4-7.6	184	4.5	3.9-5.2
Intellectual disability dual diagnosis team							41	11.0	9.2-12.7			
Kaupapa Māori team	305	12.2	11.5-12.9	521	10.9	10.4-11.4	2,928	8.5	8.3-8.8	214	5.7	5.1-6.3
Maternal mental health team	232	6.7	6.0-7.4	1,209	9.1	8.8-9.4	1,437	7.1	6.9-7.3	978	3.6	3.4-3.8
Older people team	23	13.1	10.9-15.4	106	12.7	11.5-14.0	198	11.0	10.3-11.7	48	10.3	8.6-12.0
Pacific people team				215	6.8	6.1-7.6	1,426	4.7	4.5-4.9	95	3.3	2.5-4.2
Specialty team	58	11.0	9.1-12.9	294	13.2	12.3-14.0	409	7.2	6.7-7.6	43	6.7	5.3-8.1
Total	10,847	10.9	10.8-11.0	16,566	10.5	10.4-10.6	44,187	8.0	7.9-8.0	9,089	5.3	5.2-5.4

Team type	Assessment only			Admission			Review			Discharge		
	N	Mean	CI	N	Mean	CI	N	Mean	CI	N	Mean	CI
Inpatient services												
Alcohol and drug team				256	7.3	6.9-7.6				239	5.7	5.3-6.1
Eating disorders team				28	11.0	9.3-12.6				28	8.0	6.5-9.6
Forensic team							91	11.6	10.2-13.0			
Inpatient team				9,326	14.7	14.6-14.8	1,184	11.4	11.0-11.9	8,732	6.7	6.6-6.8
Maternal mental health team				85	10.1	9.2-11.1				60	7.0	5.7-8.2
Older people team				36	14.1	10.7-17.6				38	12.1	9.7-14.5
Total				9,749	14.5	14.3-14.6	1,286	11.4	11.0-11.8	9,110	6.7	6.6-6.8

Notes: N = number of collections in period. Average = average HoNOS (12 item) score, CI = confidence interval for average score. Community discharge does not include discharges to an inpatient unit.

Interpretation: If confidence intervals for two scores do not overlap, then the scores are statistically significantly different. It is important to note that statistical significance may not indicate a clinically significant difference.

Graph 5: Average number of clinically significant HoNOS items by collection type, New Zealand, Jul 2016 - Jun 2017 and Jul 2017 - Jun 2018



Notes: Average number clinically significant items = the average number of items in the clinical range (2, 3 or 4) per collection. Community discharge does not include discharge to an inpatient unit.

Interpretation: Points are significantly different if error bars don't overlap. Decrease between admission and discharge is an indication of the outcomes achieved by the service and service user. A greater decrease between admission and discharge indicates a better outcome. Lower admission score could be indication of service users seeking out and being engaged by services at a lower level of severity.

Target: A greater decrease from admission to discharge and smaller percentage in clinical range at discharge.

Table 5: Average number of clinically significant HoNOS items by collection type and team, New Zealand, Jul 2017 - Jun 2018

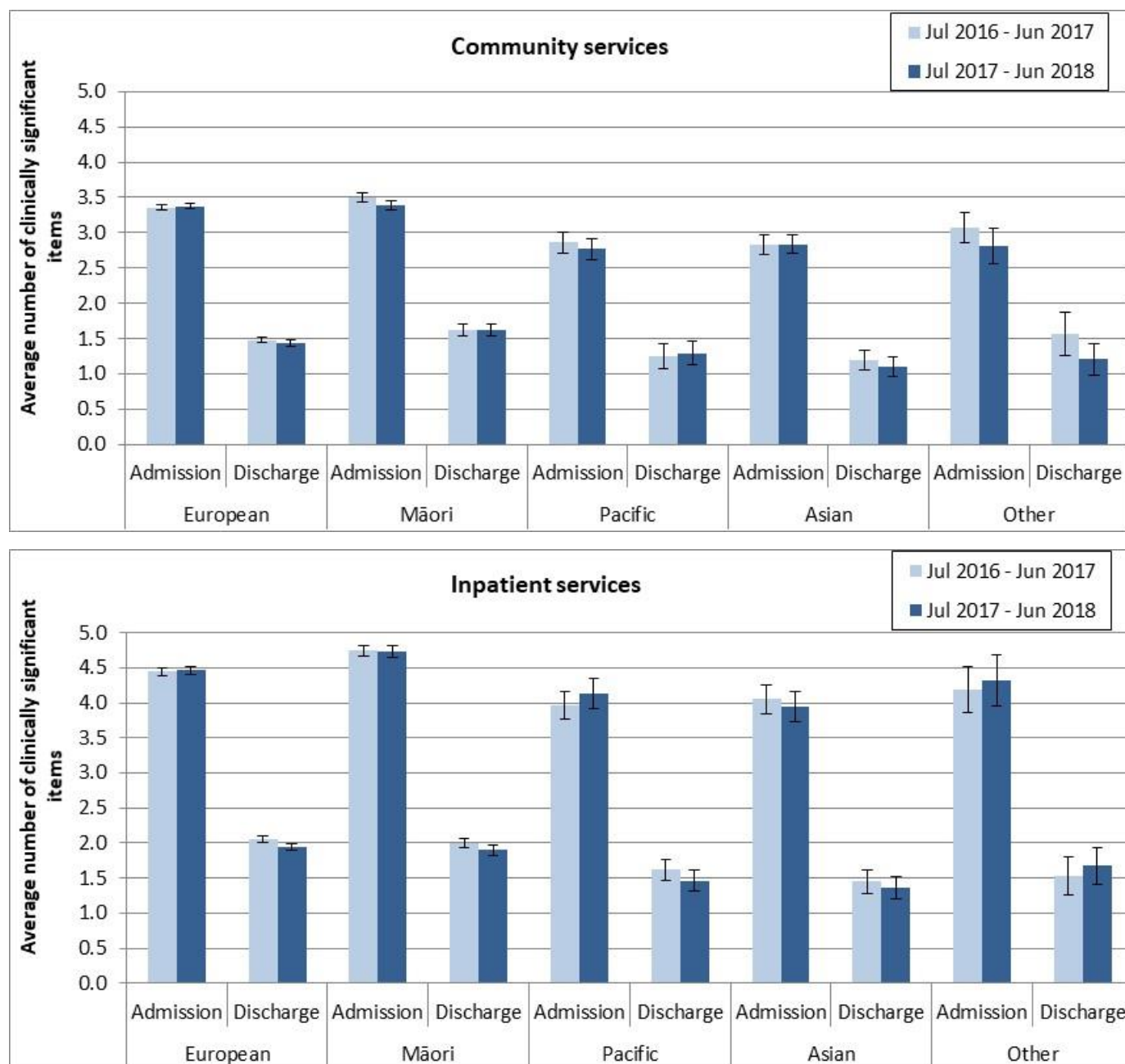
Team type	Assessment only			Admission			Review			Discharge		
	N	Mean	CI	N	Mean	CI	N	Mean	CI	N	Mean	CI
Community service												
Alcohol and drug team	431	4.0	3.8-4.2	546	3.1	2.9-3.2	765	1.9	1.8-2.0	261	1.4	1.2-1.6
Child and youth team	36	2.9	2.2-3.6	42	3.2	2.5-3.9	267	2.8	2.6-3.1	76	1.4	1.0-1.8
Co-existing problem team							27	3.6	2.9-4.3			
Community team	9,686	3.5	3.4-3.5	13,137	3.4	3.3-3.4	36,093	2.4	2.4-2.4	6,989	1.5	1.5-1.6
Eating disorders team	32	2.9	2.4-3.4	71	2.7	2.1-3.2	21	3.0	2.0-4.0			
Eating disorders team				281	3.3	3.1-3.5	348	3.1	2.8-3.3	174	1.8	1.6-2.1
Forensic team				106	2.6	2.3-2.9	194	1.7	1.5-1.9	184	1.0	0.8-1.2
Intellectual disability dual diagnosis team							41	3.5	2.9-4.1			
Kaupapa Māori team	305	4.0	3.7-4.2	521	3.3	3.1-3.5	2,928	2.5	2.4-2.5	214	1.4	1.2-1.7
Maternal mental health team	232	2.1	1.8-2.3	1,209	2.9	2.8-3.0	1,437	2.2	2.1-2.3	978	0.9	0.8-1.0
Older people team	23	4.0	3.1-4.9	106	4.0	3.5-4.4	198	3.5	3.2-3.8	48	3.2	2.5-3.8
Pacific people team				215	2.0	1.8-2.3	1,426	1.1	1.1-1.2	95	0.8	0.5-1.1
Specialty team	58	3.1	2.5-3.7	294	3.7	3.5-4.0	409	2.0	1.9-2.2	43	1.7	1.2-2.2
Total	10,847	3.5	3.4-3.5	16,566	3.3	3.3-3.3	44,187	2.4	2.4-2.4	9,089	1.5	1.4-1.5

Team type	Assessment only			Admission			Review			Discharge		
	N	Mean	CI	N	Mean	CI	N	Mean	CI	N	Mean	CI
Inpatient services												
Alcohol and drug team				256	1.8	1.7-2.0				239	1.6	1.5-1.7
Eating disorders team				28	3.4	2.8-4.0				28	2.4	1.8-2.9
Forensic team							91	3.7	3.2-4.2			
Inpatient team				9,326	4.6	4.6-4.6	1,184	3.5	3.4-3.7	8,732	1.9	1.8-1.9
Maternal mental health team				85	3.1	2.7-3.4				60	2.1	1.6-2.5
Older people team				36	3.8	2.8-4.9				38	3.7	2.9-4.5
Total				9,749	4.5	4.5-4.6	1,286	3.5	3.4-3.7	9,110	1.9	1.8-1.9

Notes: N = Number of collections in period. Average = average number of HoNOS items in the clinically significant range (ie scoring 2, 3, or 4), CI = confidence interval for average score. Community discharge does not include discharge to an inpatient unit.

Interpretation: If confidence intervals for two scores do not overlap, then the scores are statistically significantly different. Please note that statistical significance may not indicate a clinically significant difference.

Graph 6: Average number of clinically significant HoNOS items at admission and discharge by ethnic group, New Zealand, Jul 2016 - Jun 2017 and Jul 2017 - Jun 2018

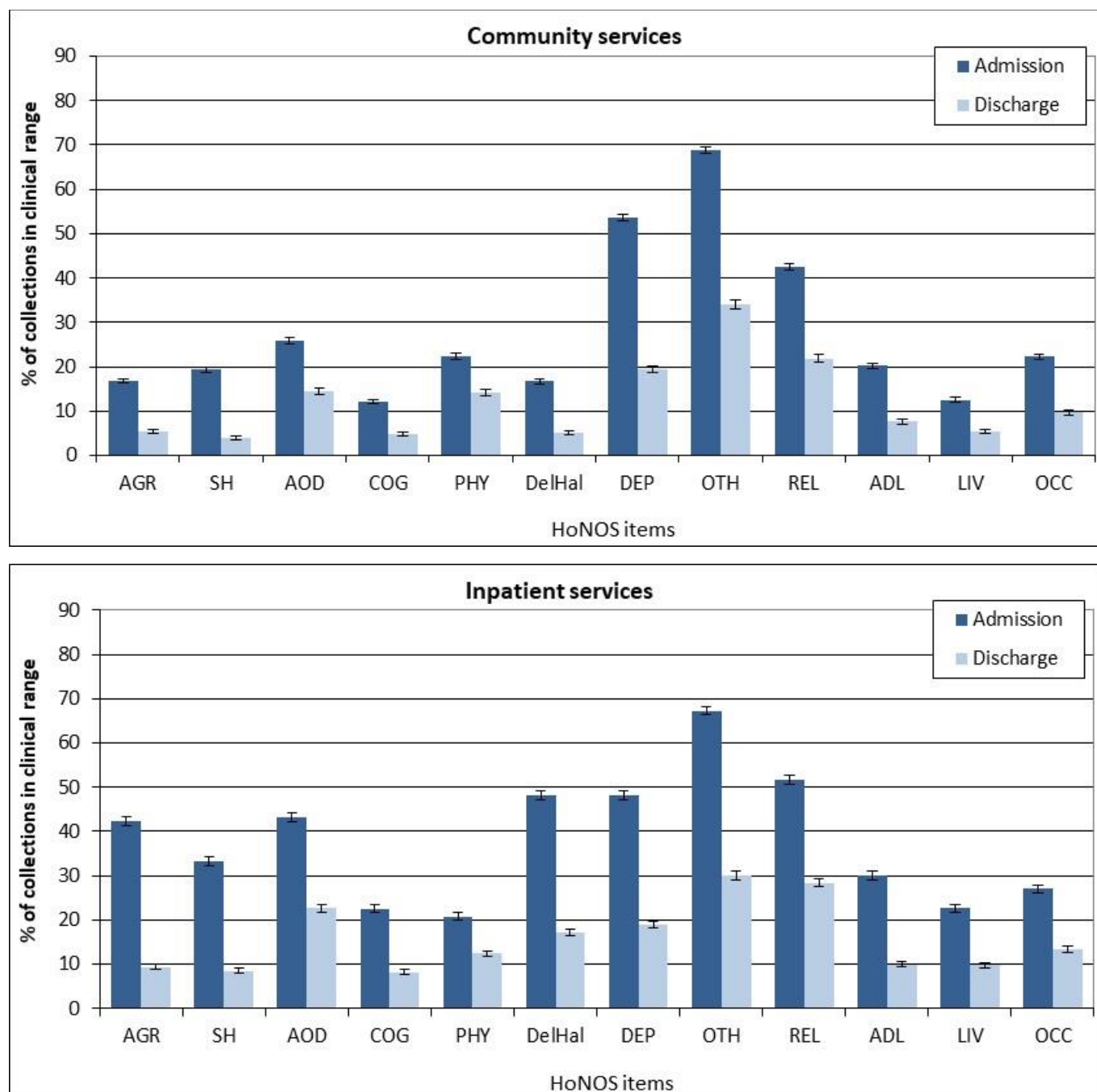


Notes: Average number of HoNOS items in the clinical range (2, 3 or 4). Community discharge does not include discharge to an inpatient unit.

Interpretation: Points are significantly different if error bars don't overlap. Decrease between admission and discharge is an indication of the outcomes achieved by the service and service user. A greater decrease between admission and discharge indicates a better outcome. A lower admission score could be indication of service users seeking out and being engaged by services at a lower level of acuity.

Target: A greater decrease from admission to discharge and smaller percentage in clinical range at discharge.

Graph 7a: Percentage of collections in clinical range on each HoNOS item, New Zealand, Jul 2017 - Jun 2018



Notes: Percentage of service users in the clinical range (2, 3 or 4) for each HoNOS item. Community discharge does not include discharge to an inpatient unit.

Interpretation: The longer the bar, the more prevalent the difficulty measured by the item is amongst service users. A greater decrease in the length of the bar from admission to discharge suggests a better outcome for the difficulty measured by the item. Items that show medium to high frequency and less change may suggest possible targets for service improvement.

Target: A greater decrease from admission to discharge and smaller percentage in clinical range at discharge.

Table 7a: Percentage of collections in clinical range on each HoNOS item (admission and discharge collections) by team, New Zealand, Jul 2017 - Jun 2018

Community services

First 6 HoNOS items														
Team type	N		AGR		SH		AOD		COG		PHY		DelHal	
	Adm	Disch	Adm	Disch	Adm	Disch	Adm	Disch	Adm	Disch	Adm	Disch	Adm	Disch
Alcohol and drug team	546	261	14%	7%	12%	1%	87%	42%	8%	2%	20%	13%	2%	0%
Child and youth team	42	76	29%	7%	24%	1%	26%	12%	12%	8%	10%	5%	12%	0%
Community team	13,119	6,979	18%	6%	22%	5%	26%	15%	12%	5%	22%	15%	18%	6%
Early intervention team	71		4%		8%		21%		20%		6%		31%	
Eating disorders team	281	174	5%	3%	14%	6%	10%	12%	12%	3%	38%	17%	15%	7%
Forensic team	106	184	7%	2%	3%	0%	39%	7%	5%	1%	8%	4%	12%	5%
Kaupapa Māori team	521	214	17%	7%	11%	2%	37%	25%	15%	3%	19%	11%	26%	6%
Maternal mental health team	1,209	978	14%	3%	8%	1%	5%	2%	5%	2%	23%	5%	2%	1%
Older people team	106	48	27%	25%	3%	0%	9%	6%	69%	67%	50%	54%	24%	13%
Pacific people team	215	95	4%	3%	3%	0%	14%	8%	7%	2%	16%	12%	25%	11%
Specialty team	294	43	14%	2%	14%	2%	19%	9%	16%	10%	55%	30%	21%	5%
Total	16,541	9,078	17%	5%	19%	4%	26%	14%	12%	5%	22%	14%	17%	5%

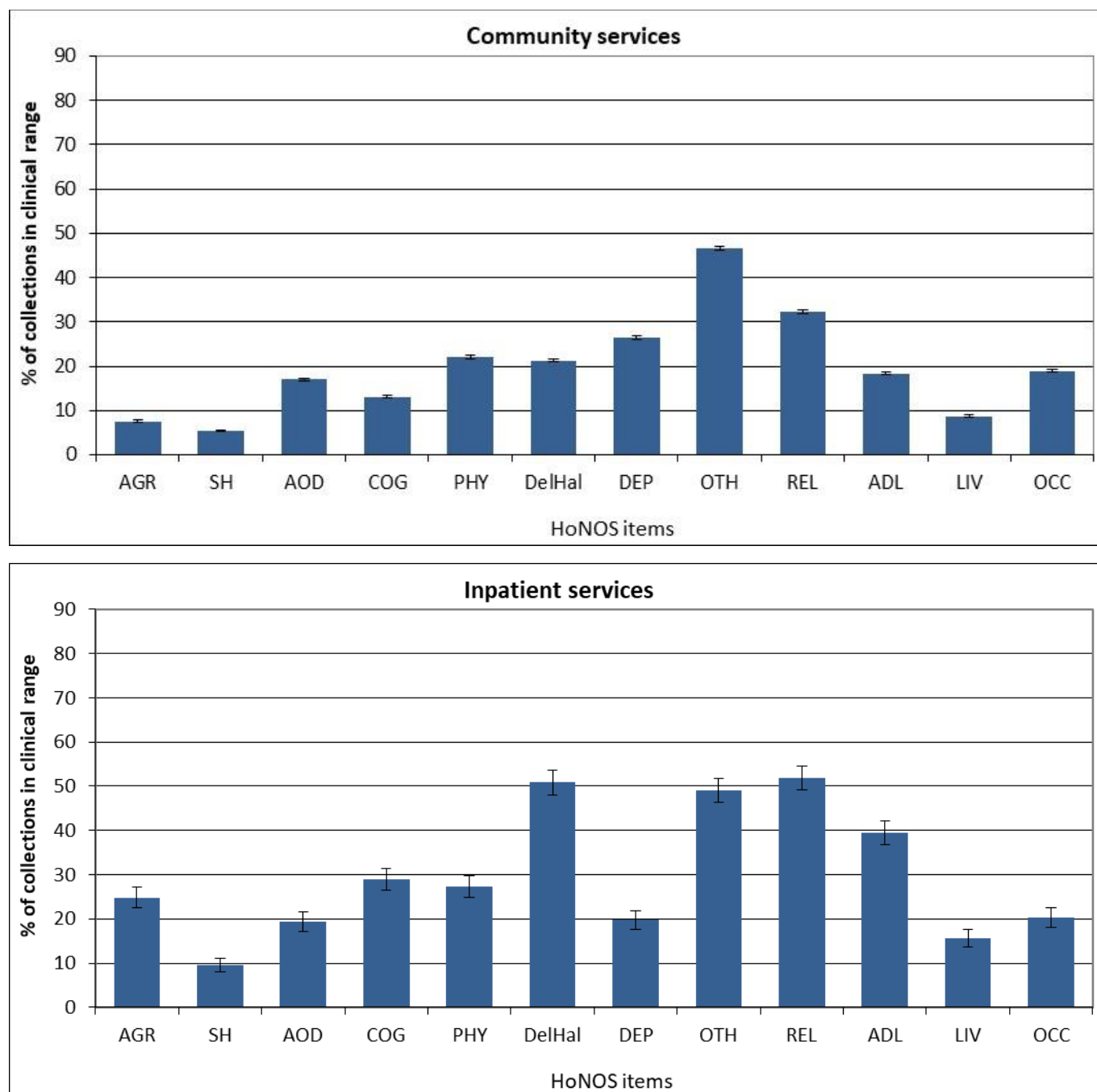
Second 6 HoNOS items												
Team type	DEP		OTH		REL		ADL		LIV		OCC	
	Adm	Disch	Adm	Disch	Adm	Disch	Adm	Disch	Adm	Disch	Adm	Disch
Alcohol and drug team	34%	11%	43%	18%	41%	22%	13%	6%	12%	5%	25%	12%
Child and youth team	48%	21%	60%	28%	48%	25%	24%	13%	7%	7%	24%	14%
Community team	54%	21%	69%	35%	43%	23%	20%	8%	12%	5%	23%	10%
Early intervention team	31%		52%		39%		32%		13%		10%	
Eating disorders team	56%	33%	97%	66%	32%	20%	33%	11%	6%	2%	12%	2%
Forensic team	14%	2%	33%	8%	19%	4%	5%	1%	59%	34%	60%	36%
Kaupapa Māori team	46%	14%	60%	27%	49%	27%	16%	6%	16%	7%	22%	9%
Maternal mental health team	72%	15%	84%	34%	37%	18%	19%	3%	11%	3%	14%	2%
Older people team	25%	10%	43%	21%	41%	40%	66%	58%	16%	13%	28%	13%
Pacific people team	24%	6%	41%	13%	34%	11%	10%	3%	11%	5%	12%	4%
Specialty team	36%	21%	68%	43%	39%	28%	35%	5%	19%	5%	42%	14%
Total	54%	19%	69%	34%	43%	22%	20%	8%	13%	5%	22%	10%

Inpatient services

First 6 HoNOS items														
Team type	N		AGR		SH		AOD		COG		PHY		DelHal	
	Adm	Disch	Adm	Disch	Adm	Disch	Adm	Disch	Adm	Disch	Adm	Disch	Adm	Disch
Alcohol and drug team	256	239	5%	7%	3%	1%	100%	97%	2%	3%	14%	14%	1%	0%
Eating disorders team	28	28	4%	7%	11%	7%	4%	7%	14%	7%	71%	36%	0%	0%
Inpatient team	9,311	8,730	44%	9%	34%	9%	42%	21%	23%	8%	21%	12%	50%	18%
Maternal mental health team	85	60	12%	7%	14%	7%	7%	3%	11%	3%	18%	7%	15%	8%
Older people team	36	38	31%	26%	14%	8%	6%	0%	47%	55%	53%	53%	18%	46%
Total	9,734	9,108	42%	9%	33%	8%	43%	23%	23%	8%	21%	12%	48%	17%
Second 6 HoNOS items														
Team type	DEP		OTH		REL		ADL		LIV		OCC			
	Adm	Disch	Adm	Disch	Adm	Disch	Adm	Disch	Adm	Disch	Adm	Disch		
Alcohol and drug team	30%	20%	19%	11%	4%	3%	2%	1%	4%	3%	1%	1%		
Eating disorders team	57%	50%	100%	89%	33%	25%	32%	4%	4%	0%	11%	4%		
Inpatient team	49%	19%	68%	30%	53%	29%	31%	10%	23%	10%	27%	14%		
Maternal mental health team	75%	47%	82%	62%	39%	37%	20%	12%	8%	12%	7%	3%		
Older people team	23%	13%	50%	22%	50%	39%	42%	74%	33%	18%	32%	28%		
Total	48%	19%	67%	30%	52%	28%	30%	10%	23%	10%	27%	13%		

Notes: Percentage of service users in the clinical range (2, 3 or 4) for each HoNOS item. Community discharge does not include discharge to an inpatient unit. **Interpretation:** The higher the percentage, the more prevalent the difficulty measured by the item is amongst service users. A greater decrease between admission to discharge suggests a better outcome for the difficulty measured by the item. Items that show medium to high frequency and less change may suggest possible targets for service improvement. **Target:** A greater decrease from admission to discharge and smaller percentage in clinical range at discharge.

Graph 7b: Percentage of collections in clinical range on each HoNOS item (review collections), New Zealand, Jul 2017 - Jun 2018



Notes: Percentage of service users in the clinical range (2, 3 or 4) for each HoNOS item on review collections. Due to most admission being less than 91 days, the data set for review collections in inpatient settings is relatively small.

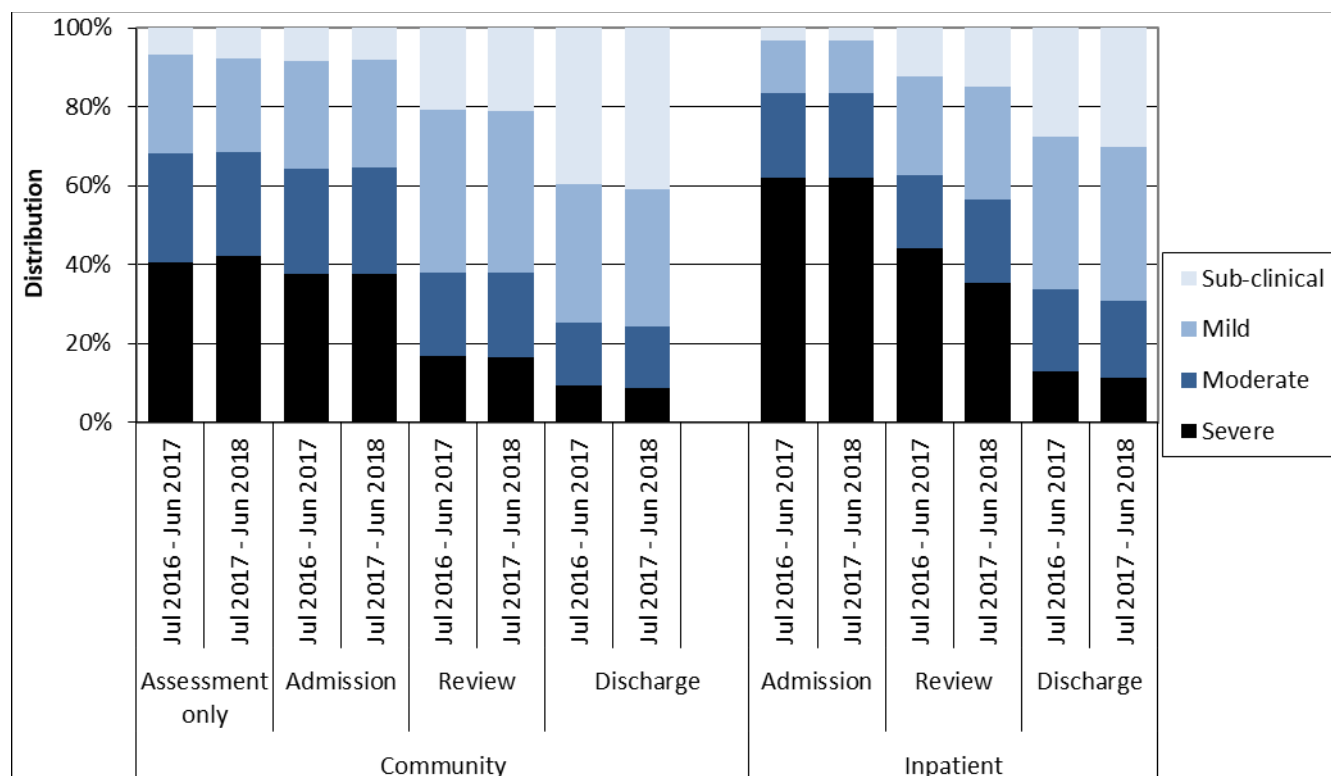
Interpretation: The longer the bar, the more prevalent the difficulty measured by the item is amongst service users.

Table 7b: Percentage of collections in clinical range on each HoNOS item (review collections) by team, New Zealand, Jul 2017 - Jun 2018

Team type	N	AGR	SH	AOD	COG	PHY	DelHal	DEP	OTH	REL	ADL	LIV	OCC
Community services													
Alcohol and drug team	765	6%	7%	44%	5%	28%	2%	21%	25%	26%	7%	10%	9%
Child and youth team	267	13%	10%	16%	20%	13%	10%	35%	63%	48%	23%	6%	26%
Co-existing problem team	27	7%	19%	37%	15%	26%	7%	56%	78%	48%	19%	11%	37%
Community team	36,063	7%	6%	17%	13%	23%	23%	26%	47%	33%	19%	8%	20%
Eating disorders team	21	5%	0%	24%	15%	5%	38%	33%	55%	43%	48%	19%	19%
Forensic team	348	8%	8%	9%	16%	38%	10%	57%	91%	26%	26%	6%	12%
Intellectual disability dual diagnosis team	194	3%	1%	3%	2%	6%	15%	3%	19%	12%	3%	46%	56%
Kaupapa Māori team	41	20%	7%	0%	63%	32%	10%	15%	54%	53%	54%	17%	27%
Maternal mental health team	2,928	10%	5%	26%	15%	23%	25%	22%	39%	32%	18%	13%	18%
Older people team	1,437	8%	4%	3%	4%	16%	1%	55%	76%	31%	10%	5%	8%
Pacific people team	198	22%	0%	2%	77%	50%	17%	16%	27%	47%	71%	5%	19%
Residential/accommodation team	1,426	2%	1%	9%	5%	14%	17%	6%	17%	12%	15%	5%	12%
Specialty team	409	5%	5%	19%	11%	6%	30%	18%	35%	30%	20%	8%	17%
Total	44,153	8%	5%	17%	13%	22%	21%	26%	47%	32%	18%	9%	19%
Inpatient services													
Forensic team	91	26%	4%	7%	44%	22%	61%	11%	48%	69%	45%	14%	15%
Inpatient team	1,183	25%	10%	20%	28%	27%	50%	20%	49%	51%	39%	16%	21%
Total	1,285	25%	10%	19%	29%	27%	51%	20%	49%	52%	40%	16%	20%

Notes: Percentage of service users in the clinical range (2, 3 or 4) for each HoNOS item on review collections. Due to most admission being less than 91 days, the data set for review collections in inpatient settings is relatively small. **Interpretation:** The higher the percentage, the more prevalent the difficulty measured by the item is amongst service users.

Graph 8: Index of Severity ratings for HoNOS by collection type, New Zealand, Jul 2016 - Jun 2017 and Jul 2017 - Jun 2018



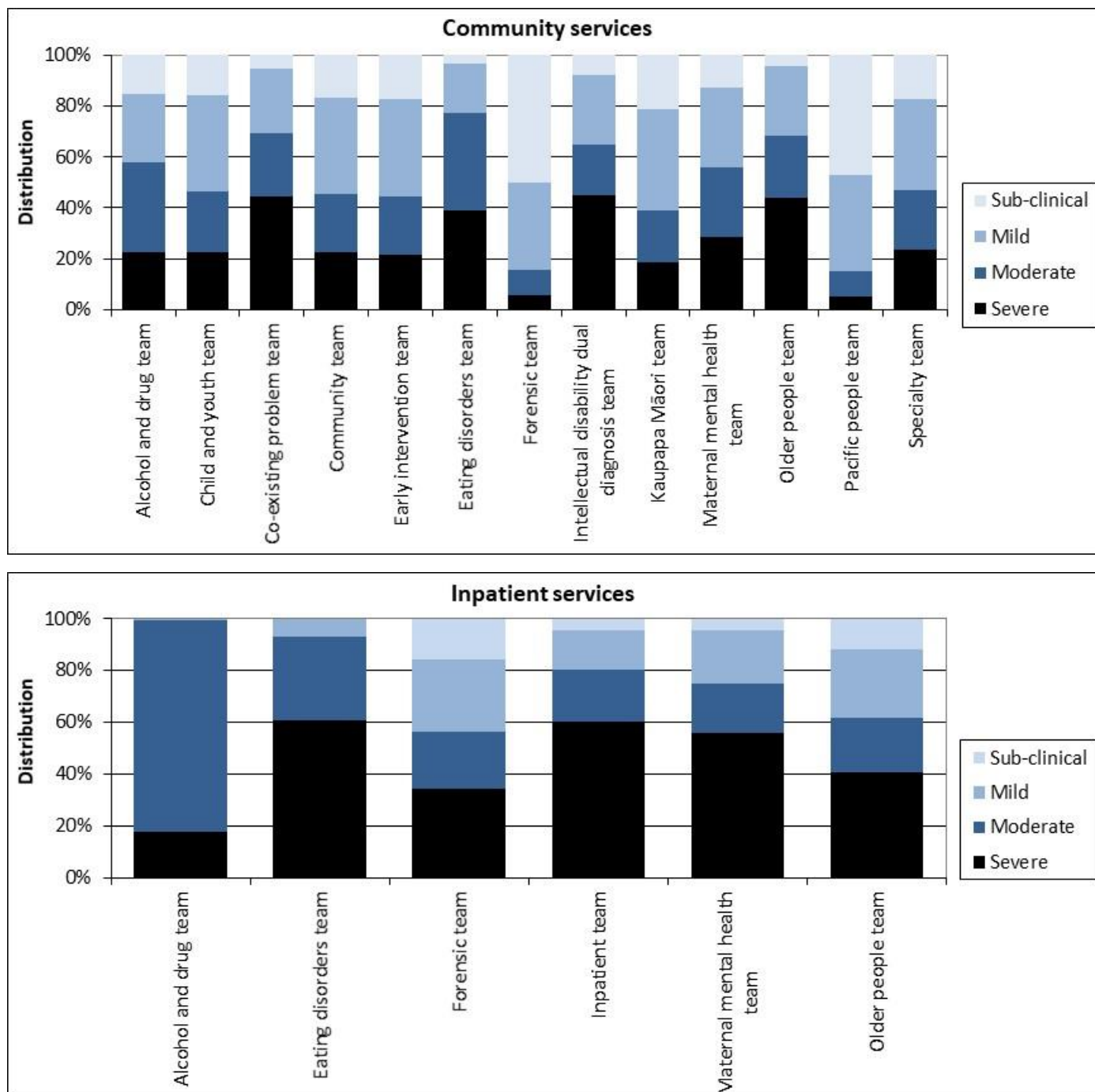
Notes: Index of Severity: Sub clinical = all items <2, mild = at least one item >1 and all items <3, moderate = at least one item >=3, severe = at least 2 items >=3 using first 10 items. Community discharge does not include discharge to an inpatient unit.

Interpretation: Darker bars indicate higher overall level of severity. More positive outcome shown by larger decrease in darker sections of bar between admission and discharge.

3. Other measures of service activity

This section presents other information related to data collected in PRIMHD that may be helpful for understanding how teams are operating. This includes information relevant to caseload intensity and team activity.

Graph 9: Index of Severity for HoNOS (admission and review collections) by team, New Zealand, Jul 2017 - Jun 2018



Notes: Only data related to collection at admission and review is included so that results reflect the severity of service users during their engagement with the service. Index of Severity: Sub clinical = all items <2, mild = at least one item >1 and all items <3, moderate = at least one item >=3, severe = at least 2 items >=3 using first 10 items.

Interpretation: This graph gives an impression of the overall severity of the caseload for different teams at admission. The longer the darker bar, the higher the overall severity of the team's caseload.

Table 9: Index of Severity for HoNOS by collection type and team, New Zealand, Jul 2017 - Jun 2018

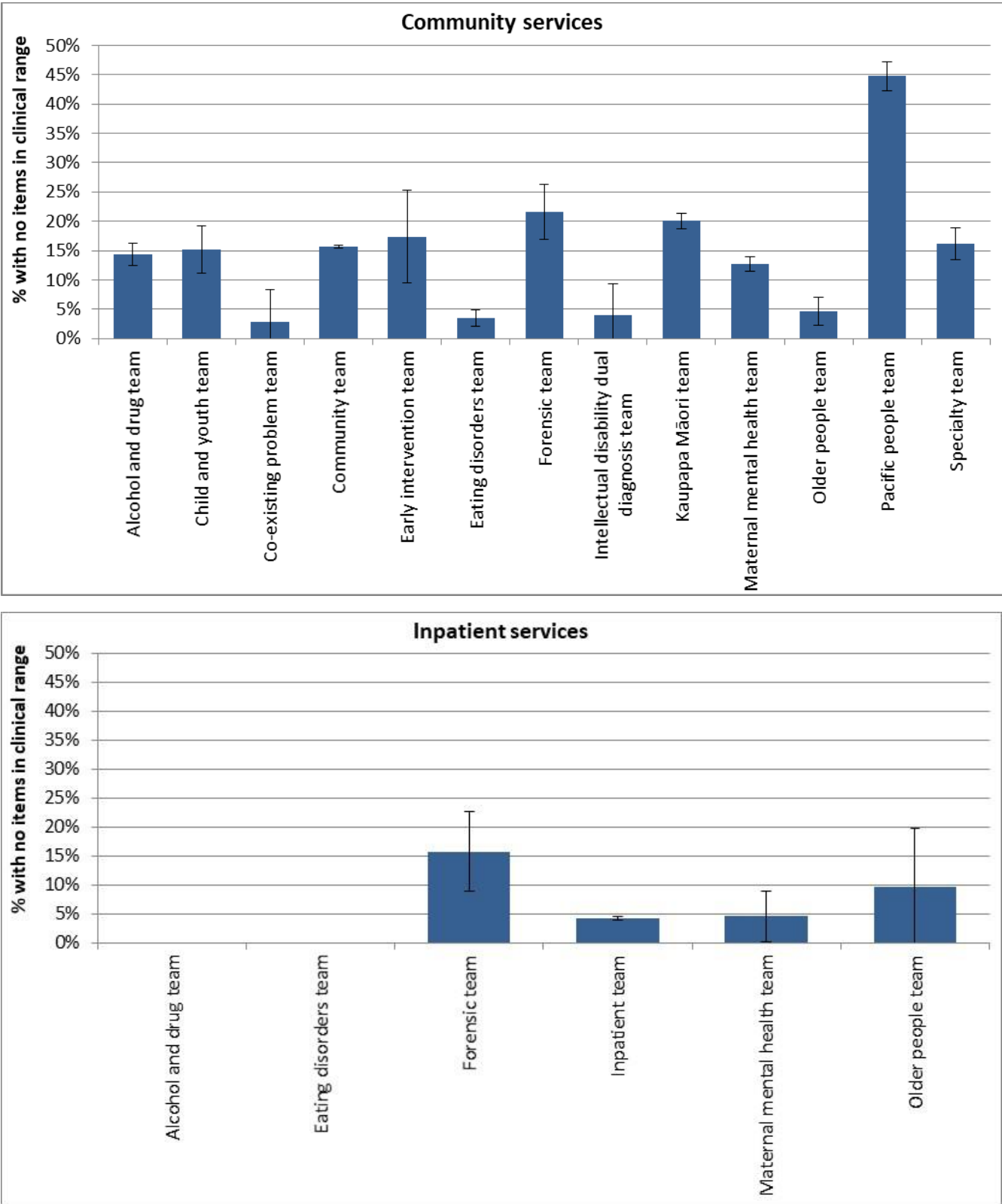
Team type	Assessment only					Admission					Review					Discharge				
	Sub	Mild	Mod	Sev	N	Sub	Mild	Mod	Sev	N	Sub	Mild	Mod	Sev	N	Sub	Mild	Mod	Sev	N
Community services																				
Alcohol and drug team	2%	11%	30%	57%	431	4%	17%	47%	32%	546	23%	34%	27%	16%	765	36%	33%	22%	9%	261
Child and youth team	19%	25%	36%	19%	36	12%	40%	19%	29%	42	16%	37%	24%	22%	267	47%	37%	12%	4%	76
Co-existing problem team											7%	26%	22%	44%	27					
Community team	7%	24%	26%	42%	9,686	8%	28%	26%	39%	13,137	20%	42%	22%	17%	36,093	38%	36%	17%	9%	6,989
Early intervention team						20%	39%	20%	21%	71	10%	33%	33%	24%	21					
Eating disorders team	0%	9%	66%	25%	32	0%	12%	43%	44%	281	6%	25%	35%	34%	348	24%	33%	31%	12%	174
Forensic team						34%	37%	19%	10%	106	59%	34%	5%	3%	194	74%	21%	4%	1%	184
Intellectual disability dual diagnosis team											10%	29%	12%	49%	41					
Kaupapa Māori team	6%	24%	25%	45%	305	10%	35%	25%	30%	521	24%	40%	20%	17%	2,928	42%	39%	10%	9%	214
Maternal mental health team	28%	33%	20%	19%	232	9%	26%	28%	37%	1,209	16%	36%	26%	22%	1,437	55%	32%	7%	6%	978
Older people team	0%	13%	9%	78%	23	2%	18%	30%	50%	106	6%	32%	21%	40%	198	10%	19%	23%	48%	48
Pacific people team						32%	35%	20%	13%	215	50%	38%	9%	4%	1,426	64%	22%	8%	5%	95
Specialty team	10%	21%	34%	34%	58	6%	26%	27%	40%	294	25%	43%	21%	12%	409	26%	49%	16%	9%	43
Total	8%	24%	26%	42%	10,847	8%	27%	27%	38%	16,566	21%	41%	21%	17%	44,187	41%	35%	16%	9%	9,089

Team type	Assessment only					Admission					Review					Discharge				
	Sub	Mild	Mod	Sev	N	Sub	Mild	Mod	Sev	N	Sub	Mild	Mod	Sev	N	Sub	Mild	Mod	Sev	N
Inpatient services																				
Alcohol and drug team						0%	1%	82%	18%	256						2%	4%	85%	8%	239
Eating disorders team						0%	7%	32%	61%	28						4%	25%	32%	39%	28
Forensic team											16%	30%	19%	35%	91					
Inpatient team						3%	14%	20%	63%	9,326	15%	29%	21%	35%	1,184	31%	40%	18%	11%	8,732
Maternal mental health team						5%	19%	19%	58%	85						18%	48%	10%	23%	60
Older people team						11%	28%	17%	44%	36						11%	24%	24%	42%	38
Total						3%	13%	22%	62%	9,749	15%	29%	21%	35%	1,286	30%	39%	19%	11%	9,110

Notes: Sub = sub clinical, Mild = mild, Mod = moderate, Sev = severe on Index of Severity. Only admission collection data is included so that results reflect the severity of service users during their engagement with the service. Index of Severity: Sub clinical = all items <2, mild = at least one item >1 and all items <3, moderate = at least one item >=3, severe = at least 2 items >=3 using first 10 items. Community discharge does not include discharge to an inpatient unit.

Interpretation: Larger percentages in the columns to the right for each type of collection, the higher the overall severity of the team's caseload.

Graph 10: Collections with no HoNOS items in clinical range, New Zealand, Jul 2017 - Jun 2018



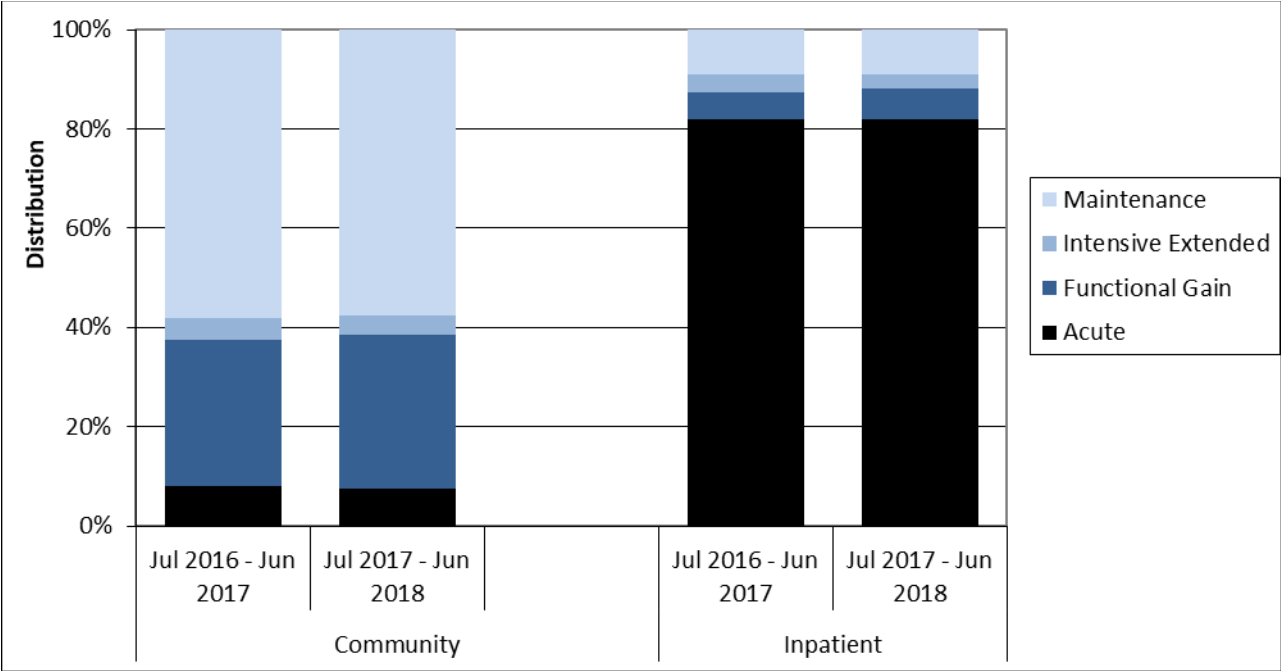
Notes: Includes admission and review collections. Shows percentage of service users with all HoNOS items less than two, ie no HoNOS items in the clinical range. **Interpretation:** There are a variety of reasons that may make it appropriate for service users to remain in the service even though they show no HoNOS items in the clinical range. However, teams showing a larger or substantial percentage of service users with no HoNOS items in the clinical range could benefit from reviewing these cases to ensure that the service remains appropriate for this service user.

Table 10: Collections with no HoNOS items in clinical range, New Zealand, Jul 2017 - Jun 2018

Team type	Number of collections with no items in clinical range	Percentage with no items in clinical range
Community services		
Alcohol and drug team	188	14%
Child and youth team	47	15%
Co-existing problem team	1	3%
Community team	7,718	16%
Early intervention team	16	17%
Eating disorders team	22	3%
Forensic team	65	22%
Intellectual disability dual diagnosis team	2	4%
Kaupapa Māori team	692	20%
Maternal mental health team	337	13%
Older people team	14	5%
Pacific people team	734	45%
Specialty team	114	16%
Total	9,954	16%
Inpatient services		
Alcohol and drug team	0	0%
Eating disorders team	0	0%
Forensic team	17	16%
Inpatient team	438	4%
Maternal mental health team	4	5%
Older people team	5	12%
Total	464	4%

Notes: For further information see notes for Graph 10.

Graph 11: Focus of care categories, New Zealand, Jul 2016 - Jun 2017 and Jul 2017 - Jun 2018



Notes: Data from review and discharge collections.

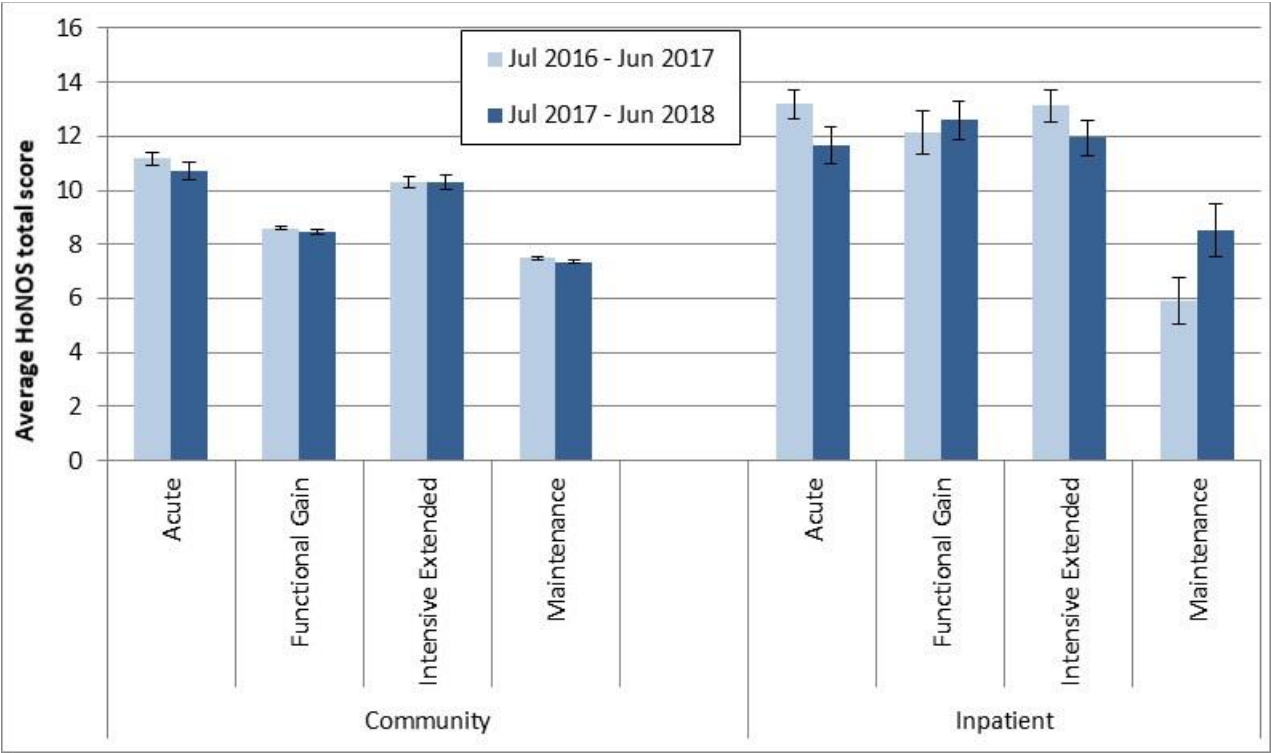
Interpretation: Darker bars indicate more intensive involvement in care, so a longer or darker bar in general suggests more intensive working. A longer functional gain bar and shorter maintenance bar potentially suggests more recovery focused ways of working.

Table 11: Focus of care categories by team, New Zealand, Jul 2016 - Jun 2017 and Jul 2017 - Jun 2018

Team type	Acute		Functional gain		Intensive extended		Maintenance		Number of collections	
	Last period	This period	Last period	This period	Last period	This period	Last period	This period	Last period	This period
Community services										
Alcohol and drug team	10%	11%	33%	37%	1%	1%	56%	52%	1,082	1,034
Child and youth team	3%	5%	34%	28%	12%	11%	52%	55%	352	337
Co-existing problem team	6%	11%	8%	16%	6%	0%	81%	73%	36	37
Community team	8%	8%	29%	31%	5%	4%	58%	58%	51,038	43,883
Early intervention team		6%		49%		3%		43%		35
Eating disorders team	6%	8%	70%	66%	11%	14%	12%	12%	667	579
Forensic team	2%	4%	1%	3%	0%	1%	97%	92%	206	297
Intellectual disability dual diagnosis team	5%	5%	5%	9%	0%	0%	90%	86%	40	44
Kaupapa Māori team	6%	6%	18%	17%	4%	2%	71%	75%	3,304	2,922
Maternal mental health team	9%	13%	50%	51%	3%	2%	38%	34%	2,411	2,465
Older people team	7%	8%	10%	12%	7%	9%	75%	71%	217	237
Pacific people team	1%	1%	10%	13%	0%	0%	89%	86%	1,688	1,445
Specialty team	3%	3%	57%	57%	4%	2%	36%	38%	475	468
Total	8%	8%	29%	31%	4%	4%	58%	58%	61,550	53,830
Inpatient services										
Alcohol and drug team	100%	99%	0%	1%	0%	0%	0%	0%	260	234
Eating disorders team	74%	72%	17%	16%	6%	0%	3%	12%	35	25
Forensic team	15%	15%	5%	8%	69%	40%	11%	37%	85	98
Inpatient team	82%	82%	5%	6%	3%	3%	9%	9%	10,495	9,548
Maternal mental health team	93%	71%	4%	6%	0%	0%	2%	24%	89	51
Older people team	69%	64%	6%	2%	3%	0%	22%	33%	32	42
Total	82%	82%	5%	6%	4%	3%	9%	9%	11,001	9,999

Notes: For further information see notes for Graph 11.

Graph 12: HoNOS total score (review collections) by focus of care, New Zealand, Jul 2016 - Jun 2017 and Jul 2017 - Jun 2018



Notes: This data is just for review collections.

Interpretation: Points are significantly different if error bars don't overlap. A general downward trend in scores from acute to maintenance focus of care might be expected.

Table 12: HoNOS total score (review collections) by focus of care by team, New Zealand, Jul 2017 - Jun 2018

Team type	Acute			Functional gain			Intensive extended			Maintenance		
	N	Mean	CI	N	Mean	CI	N	Mean	CI	N	Mean	CI
Community services												
Alcohol and drug team	65	10.5	9.1-11.8	158	6.8	6.1-7.5				494	5.0	4.7-5.3
Community team	1,150	10.9	10.5-11.2	73	9.2	8.0-10.4	32	10.7	8.3-13.0	140	8.6	7.8-9.5
Co-existing problem team										21	9.5	7.4-11.6
Community team				10,455	8.5	8.4-8.6	1,508	10.2	9.9-10.5	21,535	7.5	7.4-7.6
Eating disorders team	23	10.3	8.9-11.7	234	9.5	8.8-10.1	48	13.5	11.4-15.6	36	9.6	7.5-11.6
Forensic team										179	6.8	6.2-7.5
Intellectual disability dual diagnosis team										35	11.3	9.4-13.2
Kaupapa Māori team	124	13.1	12.0-14.2	442	9.7	9.1-10.3	59	8.7	7.3-10.2	2,018	7.8	7.5-8.1
Maternal mental health team	156	6.8	6.1-7.6	770	8.0	7.7-8.3				445	5.7	5.4-6.1
Older people team							18	12.7	11.3-14.2	136	11.0	10.2-11.8
Pacific people team				152	4.1	3.5-4.7				1,179	4.7	4.5-4.9
Specialty team				224	7.4	6.8-8.0				154	5.9	5.2-6.6
Total	1,556	10.7	10.4-11.0	12,552	8.5	8.4-8.5	1,692	10.3	10.0-10.6	26,399	7.3	7.3-7.4
Inpatient services												
Forensic team							38	13.3	11.9-14.8	33	8.6	6.0-11.2
Inpatient team	612	11.6	10.9-12.3	245	12.7	12.0-13.5	167	11.6	10.8-12.3	145	8.5	7.4-9.6
Total	626	11.7	11.0-12.3	252	12.6	11.9-13.3	206	11.9	11.3-12.6	180	8.5	7.5-9.5

Notes: For further information see notes for Graph 12.