

# PRIMHD summary report - HoNOS

## Health of the Nation Outcomes Scales – working age adults report for New Zealand



This report summarises national Programme for the Integration of Mental Health Data (PRIMHD) data submitted by district health boards (DHBs). In particular, it presents Health of the National Outcomes Scale working aged adults (HoNOS) data, from services where HoNOS is the primary measure.

This report is organised into three major sections that provide information about:

1. **Outcomes related information:** This provides indications about what changes have occurred for service users between entering and leaving the service. Outcome is assessed by comparing the group admitted and the group discharged from the service in the same time period. This should provide a reasonable indication of outcomes achieved unless the service user mix has changed significantly over the usual period for which service is delivered.
2. **Service related information:** This provides information about the services, such as the overall severity of service users who use different services.
3. **Collection completion and validity:** This details the completeness of the data set provided by your mental health services. This is important because it indicates how valid and reliable the data sets are likely to be. The less complete the data set, the less valid the information is likely to be.

In many cases the data is presented graphically for New Zealand, and then presented as a table for the individual team types (see team type classification factsheet).

The time period covered differs for the different data presented. See the title or the notes under the graphs or tables for information about the time period covered. Unless otherwise stated, the notes under the graphs also apply to the corresponding table.

For all graphs and tables, if there are less than twenty cases in the data set, then the information is not presented. This is because small samples frequently provide inaccurate and potentially misleading results. See the notes and user guide for other important information about the graphs and tables.

Where appropriate, the statistical **confidence interval** is presented. This is shown by error bars (small lines above and below the average) on the graphs, and a score range in some tables. As a rule of thumb, if the confidence intervals of two data points do not overlap, the two points can be considered to be significantly different. If the confidence intervals of the data points do overlap, we assume the points are not significantly different. It is important to note that statistical significance may not indicate a clinically significant difference. **See the associated user guide for more information** about how to understand and use the data presented in this report.

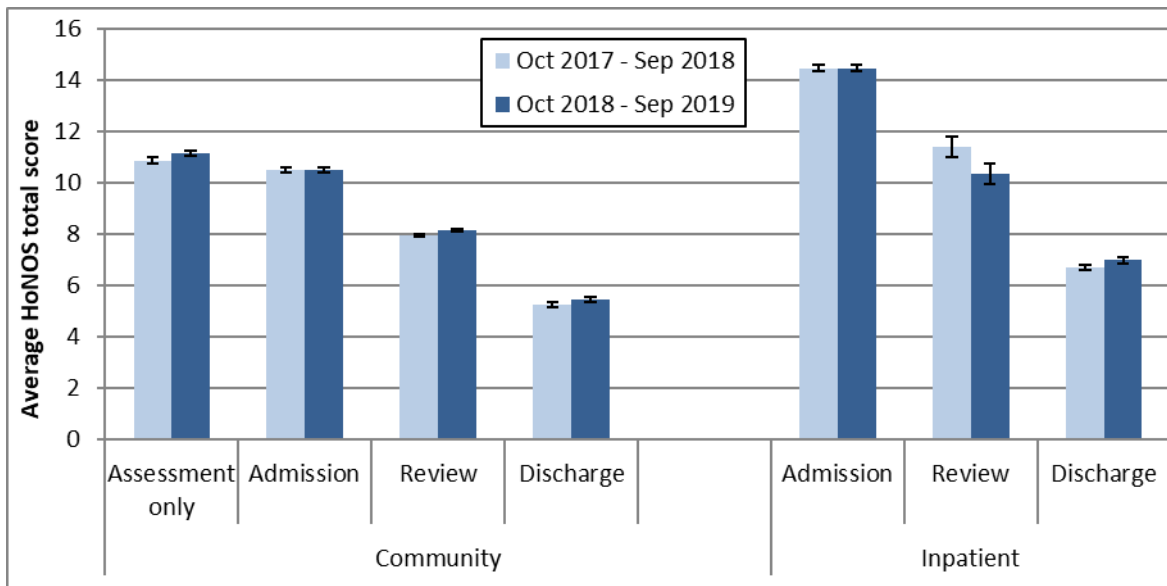
Data for graphs 11 and 12 was extracted 14 January 2020 from PRIMHD by the Ministry of Health and formatted by Te Pou. The data for graphs and tables 1 to 10 and 13 was extracted 15 January 2020 from PRIMHD by the Ministry of Health, then analysed and formatted by Te Pou.

*Please note: For this period a few DHBs have incomplete data which will affect New Zealand totals.*

# 1. Outcomes – changes in service user status

This section presents HoNOS data indicating the status of service users at different stages of their contact with DHB mental health services. Graph and Table 1 and 2 show results from HoNOS total scores. Graphs and Tables 3 to 5b show results related to the percentage of HoNOS items in the clinical range. Graph and Table 6 show results from the Index of Severity derived from HoNOS scores.

**Graph 1: Average HoNOS total score (12 items) by collection type, New Zealand, Oct 2017 - Sep 2018 and Oct 2018 - Sep 2019**



**Notes:** Error bars indicate the confidence intervals around the data point. If error bars overlap the data points are not significantly different. Community discharge does not include discharge to an inpatient unit.

**Interpretation:** Decrease between admission and discharge is an indication of the outcomes achieved by the service user and service. The greater the decrease between admission and discharge, and the lower the average HoNOS score at discharge, the more positive the outcome.

**Target:** A greater decrease from admission to discharge and lower average rating at discharge.

**Table 1: Average HoNOS total score (12 items), by collection type and team, New Zealand, Oct 2018 - Sep 2019**

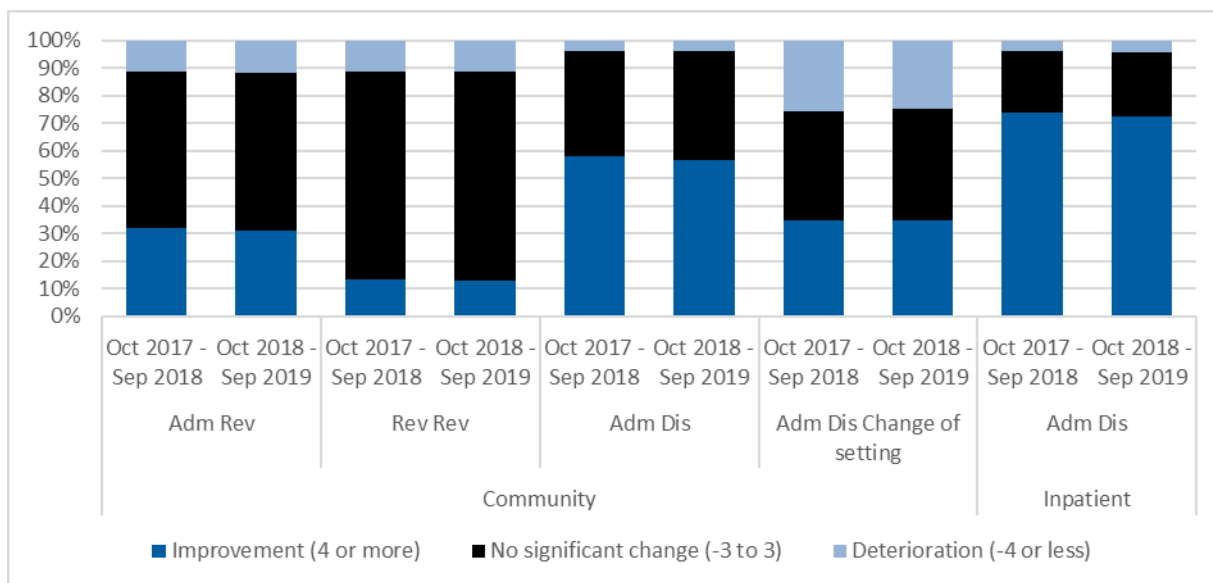
Team type	Assessment only			Admission			Review			Discharge		
	N	Mean	CI	N	Mean	CI	N	Mean	CI	N	Mean	CI
<b>Community services</b>												
Alcohol and drug team	461	11.6	11.1-12.2	580	10.4	10.0-10.8	699	7.0	6.7-7.4	297	5.2	4.7-5.8
Child and youth team	48	10.9	9.1-12.6	52	10.3	8.6-12.0	187	9.8	8.7-10.8	69	6.7	5.6-7.8
Co-existing problem team							39	9.7	7.7-11.6			
Community team	11,020	11.2	11.1-11.3	12,729	10.6	10.5-10.7	35,980	8.2	8.2-8.3	7,287	5.6	5.5-5.7
Early intervention team				335	10.0	9.4-10.7	1,241	8.3	8.0-8.6	148	5.5	4.7-6.2
Eating disorders team	36	10.3	8.9-11.6	330	11.6	11.0-12.1	370	10.4	9.8-11.0	171	5.9	5.1-6.6
Forensic team	73	7.8	6.4-9.1	96	10.4	9.3-11.5	99	7.7	6.8-8.6	114	5.8	4.9-6.7
Intellectual disability dual diagnosis team							27	11.4	9.2-13.6			
Kaupapa Māori team	359	11.9	11.3-12.5	510	11.1	10.6-11.6	2,843	8.6	8.3-8.8	324	6.8	6.2-7.4
Maternal mental health team	197	6.5	5.8-7.3	1,030	8.9	8.6-9.2	1,289	7.0	6.8-7.3	959	3.6	3.4-3.8
Needs assessment and service coordination team							34	8.7	7.3-10.1			
Older people team	32	11.2	8.8-13.7	68	10.4	9.3-11.6	117	10.2	9.1-11.2	41	8.4	6.9-9.9
Pacific people team				140	7.2	6.3-8.0	1,042	4.7	4.5-4.9	71	3.0	2.2-3.7
Specialty team	144	14.9	13.4-16.4	67	12.8	11.0-14.6	52	11.3	9.8-12.8	21	7.2	4.7-9.7
<b>Total</b>	<b>12,398</b>	<b>11.1</b>	<b>11.0-11.3</b>	<b>15,968</b>	<b>10.5</b>	<b>10.4-10.6</b>	<b>44,023</b>	<b>8.1</b>	<b>8.1-8.2</b>	<b>9,520</b>	<b>5.4</b>	<b>5.4-5.5</b>

Team type	Assessment only			Admission			Review			Discharge		
	N	Mean	CI	N	Mean	CI	N	Mean	CI	N	Mean	CI
<b>Inpatient services</b>												
Alcohol and drug team				263	8.7	8.2-9.2				246	6.7	6.3-7.1
Eating disorders team				24	10.4	8.6-12.2						
Forensic team				29	12.3	8.5-16.2	91	12.3	11.2-13.5	32	4.1	2.2-6.0
Inpatient team				9,169	14.7	14.5-14.8	1,125	10.2	9.8-10.6	8,836	7.0	6.9-7.1
Maternal mental health team				87	11.0	9.6-12.4				68	6.7	5.8-7.6
Older people team				34	13.3	11.3-15.3				32	9.8	7.6-12.1
Specialty team										23	8.8	6.8-10.8
<b>Total</b>				<b>9,622</b>	<b>14.5</b>	<b>14.3-14.6</b>	<b>1,243</b>	<b>10.4</b>	<b>10.0-10.7</b>	<b>9,256</b>	<b>7.0</b>	<b>6.9-7.1</b>

**Notes:** N = number of collections in period. Average = average HoNOS (12 item) score, CI = confidence interval for average score. Community discharge does not include discharges to an inpatient unit.

**Interpretation:** If confidence intervals for two scores do not overlap, then the scores are statistically significantly different. It is important to note that statistical significance may not indicate a clinically significant difference.

**Graph 2: Difference in HoNOS total score (12 items) of matched pairs by pair type and setting, New Zealand, Oct 2017 - Sep 2018 and Oct 2018 - Sep 2019**

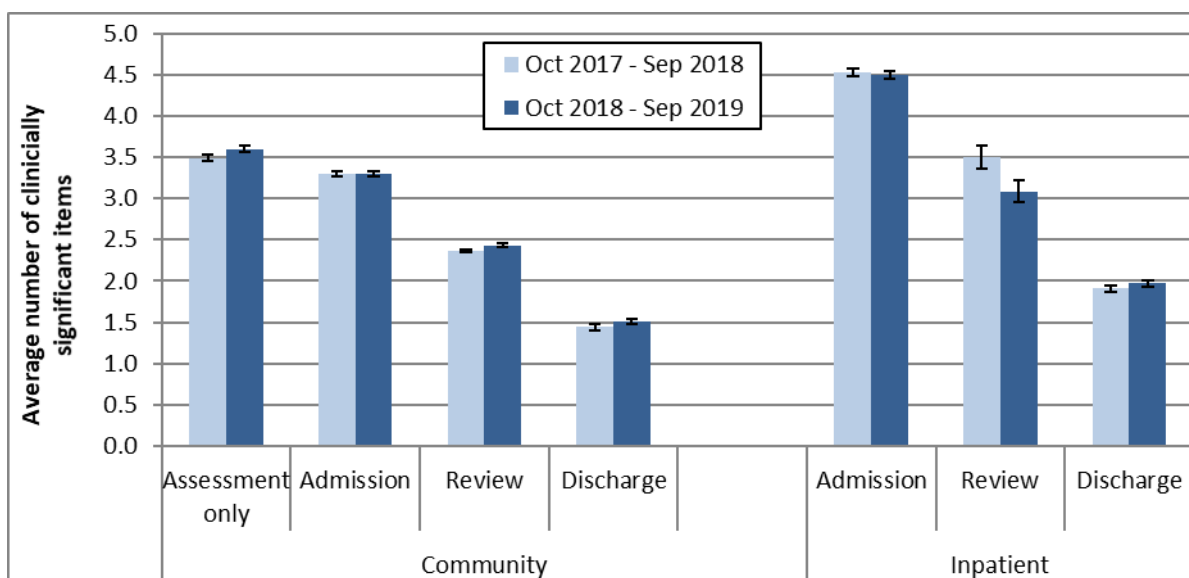


**Notes:** Shows the difference of the matched pair between the start and end HoNOS total score.

**Interpretation:** The graphs compare two time periods. Dark blue band indicates percentage improvement within the given time period, while black band indicates no significant change and light blue deterioration. Improvement = 4 or more, no significant change = -3 to 3 and deterioration = -4 or less.

**Target:** A greater percentage increase in improvement for both community and inpatient settings and a smaller percentage in deterioration.

**Graph 3: Average number of clinically significant HoNOS items by collection type, New Zealand, Oct 2017 - Sep 2018 and Oct 2018 - Sep 2019**



**Notes:** Average number clinically significant items = the average number of items in the clinical range (2, 3 or 4) per collection. Community discharge does not include discharge to an inpatient unit.

**Interpretation:** Points are significantly different if error bars don't overlap. Decrease between admission and discharge is an indication of the outcomes achieved by the service and service user. A greater decrease between admission and discharge indicates a better outcome. Lower admission score could be indication of service users seeking out and being engaged by services at a lower level of severity.

**Target:** A greater decrease from admission to discharge and smaller percentage in clinical range at discharge.

**Table 3: Average number of clinically significant HoNOS items by collection type and team, New Zealand, Oct 2018 - Sep 2019**

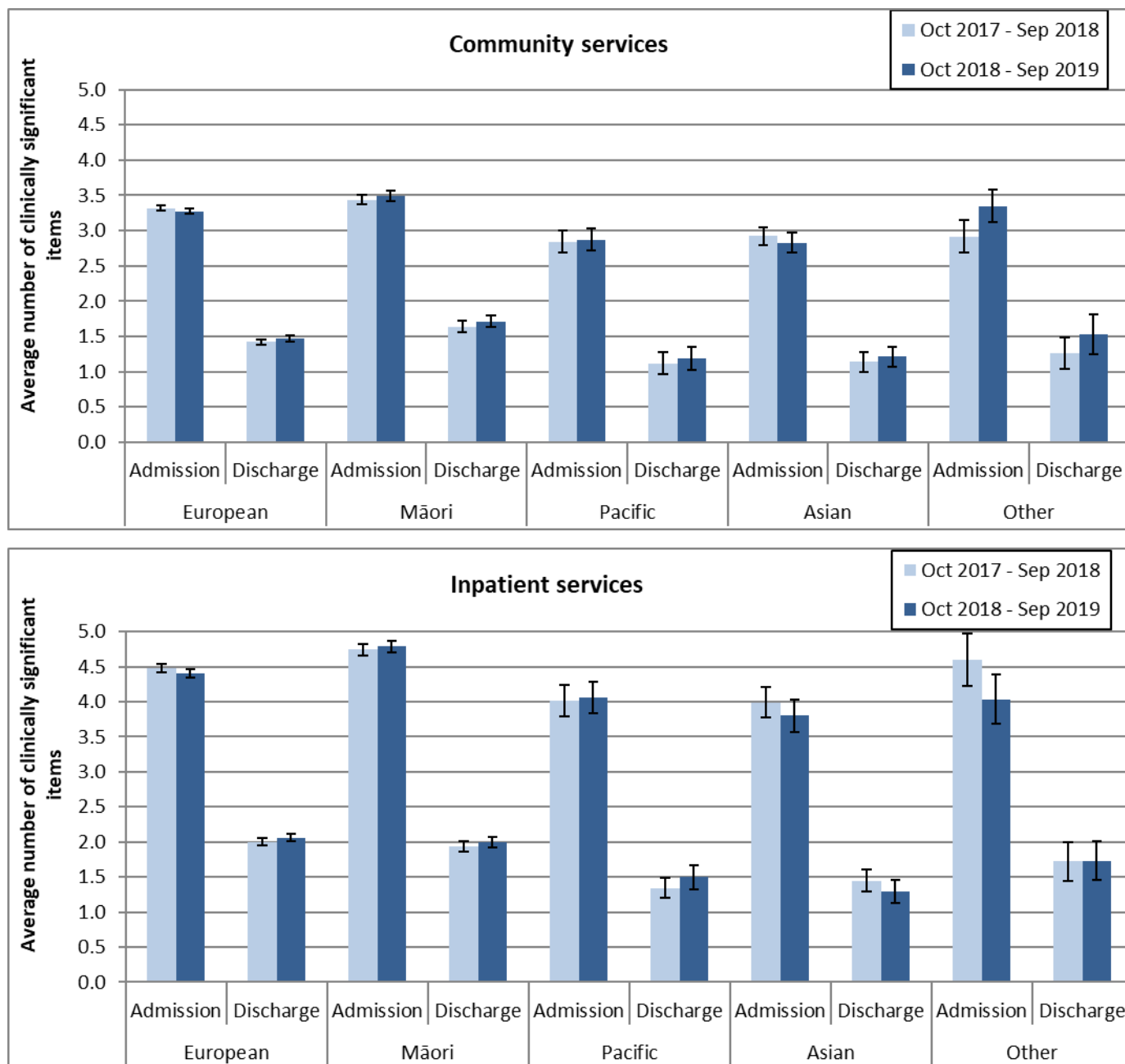
Team type	Assessment only			Admission			Review			Discharge		
	N	Mean	CI	N	Mean	CI	N	Mean	CI	N	Mean	CI
<b>Community service</b>												
Alcohol and drug team	461	3.7	3.5-3.9	580	3.3	3.1-3.4	699	2.1	1.9-2.2	297	1.4	1.2-1.6
Child and youth team	48	3.7	3.0-4.3	52	3.4	2.8-4.0	187	2.9	2.6-3.3	69	2.0	1.6-2.4
Co-existing problem team							39	2.8	2.0-3.5			
Community team	11,020	3.6	3.6-3.7	12,729	3.3	3.3-3.4	35,980	2.5	2.4-2.5	7,287	1.6	1.5-1.6
Early intervention team				335	3.1	2.9-3.3	1,241	2.5	2.4-2.6	148	1.6	1.3-1.9
Eating disorders team	36	3.2	2.7-3.7	330	3.6	3.4-3.8	370	3.2	3.0-3.5	171	1.7	1.4-2.0
Forensic team	73	2.0	1.6-2.4	96	2.9	2.5-3.3	99	2.2	1.8-2.5	114	1.2	1.0-1.5
Intellectual disability dual diagnosis team							27	3.6	2.8-4.3			
Kaupapa Māori team	359	3.8	3.6-4.0	510	3.5	3.3-3.7	2,843	2.6	2.5-2.6	324	1.9	1.7-2.1
Maternal mental health team	197	2.1	1.8-2.3	1,030	2.8	2.7-2.9	1,289	2.2	2.1-2.3	959	0.9	0.8-1.0
Needs assessment and service coordination team							34	2.4	1.7-3.0			
Older people team	32	3.2	2.4-4.0	68	3.1	2.7-3.5	117	3.0	2.7-3.4	41	2.4	2.0-2.9
Pacific people team				140	2.0	1.7-2.4	1,042	1.2	1.1-1.3	71	0.6	0.4-0.8
Specialty team	144	4.0	3.6-4.4	67	3.9	3.4-4.5	52	3.7	3.1-4.2	21	2.1	1.2-3.0
<b>Total</b>	<b>12,398</b>	<b>3.6</b>	<b>3.6-3.6</b>	<b>15,968</b>	<b>3.3</b>	<b>3.3-3.3</b>	<b>44,023</b>	<b>2.4</b>	<b>2.4-2.5</b>	<b>9,520</b>	<b>1.5</b>	<b>1.5-1.5</b>

Team type	Assessment only			Admission			Review			Discharge		
	N	Mean	CI	N	Mean	CI	N	Mean	CI	N	Mean	CI
<b>Inpatient services</b>												
Alcohol and drug team				263	2.4	2.2-2.6				246	1.9	1.8-2.1
Eating disorders team				24	3.3	2.6-3.9						
Forensic team				29	3.7	2.5-5.0	91	3.9	3.5-4.4	32	0.9	0.3-1.5
Inpatient team				9,169	4.6	4.5-4.6	1,125	3.0	2.9-3.2	8,836	2.0	1.9-2.0
Maternal mental health team				87	3.4	3.0-3.9				68	2.0	1.6-2.3
Older people team				34	4.1	3.4-4.9				32	3.1	2.3-3.9
Specialty team										23	2.8	2.1-3.6
<b>Total</b>				<b>9,622</b>	<b>4.5</b>	<b>4.4-4.5</b>	<b>1,243</b>	<b>3.1</b>	<b>2.9-3.2</b>	<b>9,256</b>	<b>2.0</b>	<b>1.9-2.0</b>

**Notes:** N = Number of collections in period. Average = average number of HoNOS items in the clinically significant range (ie scoring 2, 3, or 4), CI = confidence interval for average score. Community discharge does not include discharge to an inpatient unit.

**Interpretation:** If confidence intervals for two scores do not overlap, then the scores are statistically significantly different. Please note that statistical significance may not indicate a clinically significant difference.

**Graph 4: Average number of clinically significant HoNOS items at admission and discharge by ethnic group, New Zealand, Oct 2017 - Sep 2018 and Oct 2018 - Sep 2019**



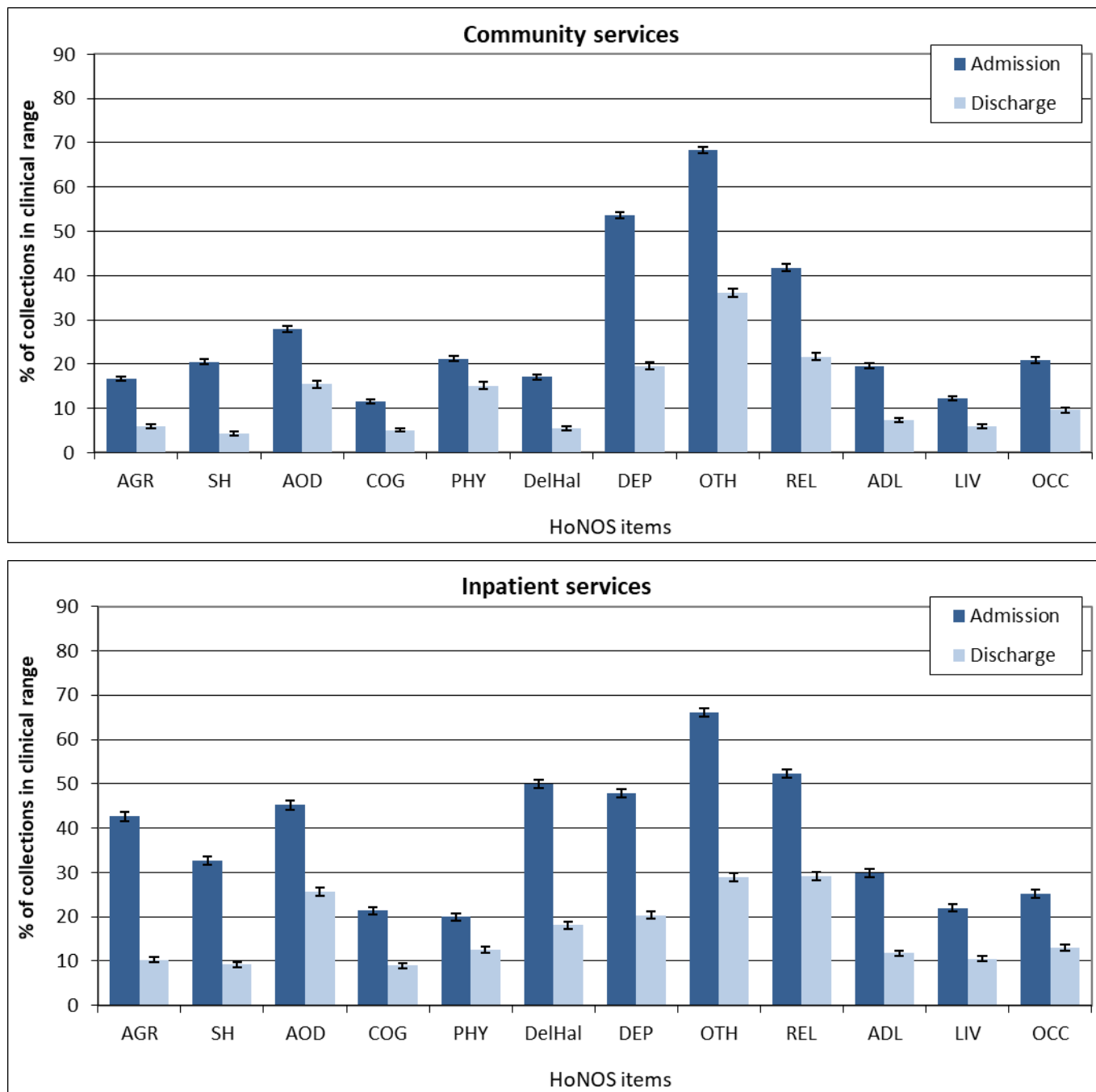
**Notes:** Average number of HoNOS items in the clinical range (2, 3 or 4). Community discharge does not include discharge to an inpatient unit.

**Interpretation:** Points are significantly different if error bars don't overlap. Decrease between admission and discharge is an indication of the outcomes achieved by the service and service user. A greater decrease between admission and discharge indicates a better outcome. A lower admission score could be indication of service users seeking out and being engaged by services at a lower level of acuity.

**Target:** A greater decrease from admission to discharge and smaller percentage in clinical range at discharge.



**Graph 5a: Percentage of collections in clinical range on each HoNOS item, New Zealand, Oct 2018 - Sep 2019**



**Notes:** Percentage of service users in the clinical range (2, 3 or 4) for each HoNOS item. Community discharge does not include discharge to an inpatient unit.

**Interpretation:** The longer the bar, the more prevalent the difficulty measured by the item is amongst service users. A greater decrease in the length of the bar from admission to discharge suggests a better outcome for the difficulty measured by the item. Items that show medium to high frequency and less change may suggest possible targets for service improvement.

**Target:** A greater decrease from admission to discharge and smaller percentage in clinical range at discharge.

Table 5a: Percentage of collections in clinical range on each HoNOS item (admission and discharge collections) by team, New Zealand, Oct 2018 - Sep 2019

### Community services

First 6 HoNOS items														
Team type	N		AGR		SH		AOD		COG		PHY		DelHal	
	Adm	Disch	Adm	Disch	Adm	Disch	Adm	Disch	Adm	Disch	Adm	Disch	Adm	Disch
Alcohol and drug team	580	297	15%	7%	14%	3%	89%	52%	7%	2%	24%	11%	3%	1%
Child and youth team	52	69	19%	4%	45%	13%	29%	16%	10%	6%	18%	12%	6%	9%
Community team	12,717	7,279	17%	6%	23%	5%	27%	16%	12%	5%	21%	16%	18%	6%
Early intervention team	335	148	15%	6%	9%	4%	29%	17%	20%	5%	10%	6%	48%	16%
Eating disorders team	330	171	7%	3%	13%	4%	13%	7%	18%	5%	42%	19%	11%	6%
Forensic team	96	114	13%	4%	5%	2%	41%	12%	10%	1%	15%	9%	8%	3%
Kaupapa Māori team	510	324	20%	11%	15%	5%	38%	27%	16%	6%	15%	13%	28%	10%
Maternal mental health team	1,030	959	14%	3%	8%	1%	4%	2%	4%	1%	21%	9%	2%	0%
Older people team	68	41	18%	5%	5%	0%	6%	0%	57%	61%	42%	54%	26%	12%
Pacific people team	140	71	7%	0%	3%	1%	17%	10%	13%	1%	16%	11%	24%	8%
Specialty team	67	21	12%	10%	40%	0%	28%	14%	18%	19%	42%	38%	7%	0%
<b>Total</b>	<b>15,949</b>	<b>9,508</b>	<b>17%</b>	<b>6%</b>	<b>21%</b>	<b>4%</b>	<b>28%</b>	<b>15%</b>	<b>12%</b>	<b>5%</b>	<b>21%</b>	<b>15%</b>	<b>17%</b>	<b>5%</b>

Second 6 HoNOS items												
Team type	DEP		OTH		REL		ADL		LIV		OCC	
	Adm	Disch	Adm	Disch	Adm	Disch	Adm	Disch	Adm	Disch	Adm	Disch
Alcohol and drug team	35%	11%	52%	15%	45%	21%	15%	9%	13%	6%	21%	10%
Child and youth team	54%	30%	67%	54%	50%	32%	23%	13%	10%	3%	15%	7%
Community team	55%	21%	68%	37%	42%	22%	19%	7%	12%	6%	21%	10%
Early intervention team	29%	9%	59%	37%	36%	30%	23%	9%	12%	5%	20%	14%
Eating disorders team	58%	22%	98%	63%	37%	18%	38%	11%	9%	4%	18%	9%
Forensic team	14%	2%	26%	2%	26%	4%	9%	1%	64%	44%	64%	45%
Kaupapa Māori team	45%	26%	66%	35%	48%	28%	17%	8%	17%	12%	23%	9%
Maternal mental health team	70%	18%	82%	36%	37%	16%	19%	3%	9%	2%	15%	1%
Older people team	26%	12%	32%	15%	28%	24%	51%	49%	6%	5%	12%	5%
Pacific people team	26%	1%	34%	10%	34%	10%	9%	3%	11%	1%	12%	3%
Specialty team	39%	14%	67%	38%	39%	33%	37%	29%	21%	5%	43%	10%
<b>Total</b>	<b>54%</b>	<b>20%</b>	<b>68%</b>	<b>36%</b>	<b>42%</b>	<b>22%</b>	<b>20%</b>	<b>7%</b>	<b>12%</b>	<b>6%</b>	<b>21%</b>	<b>10%</b>

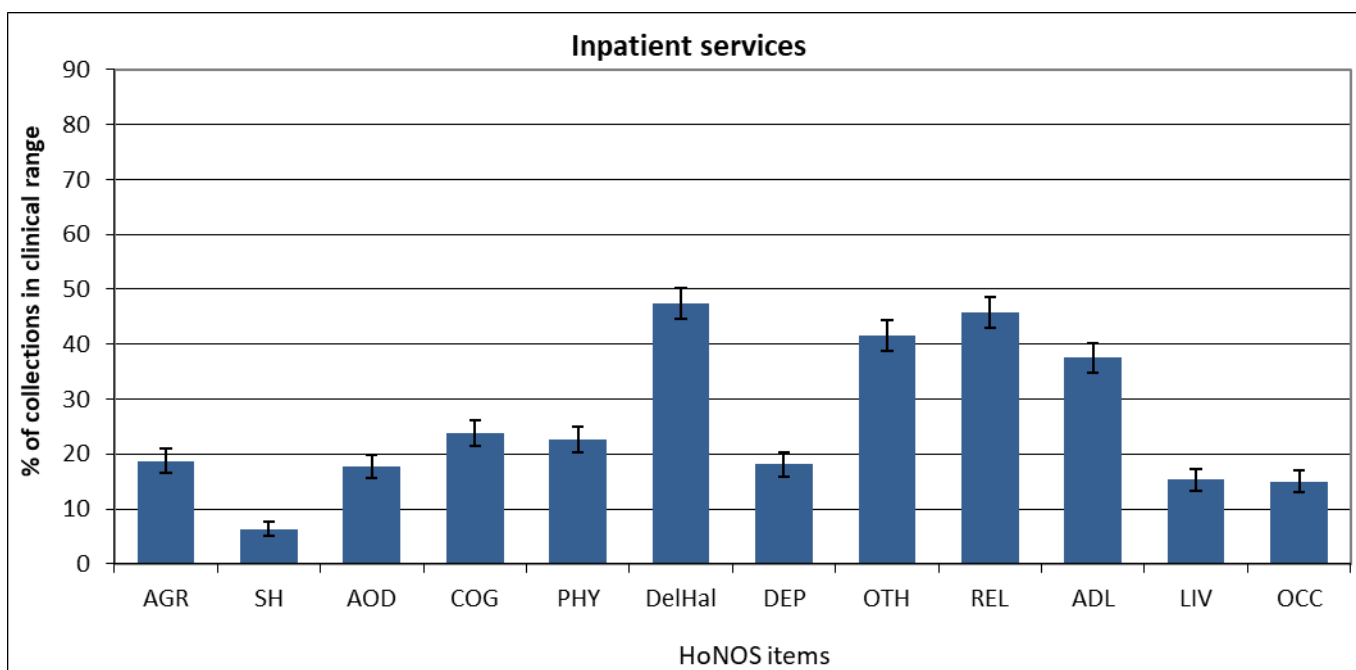
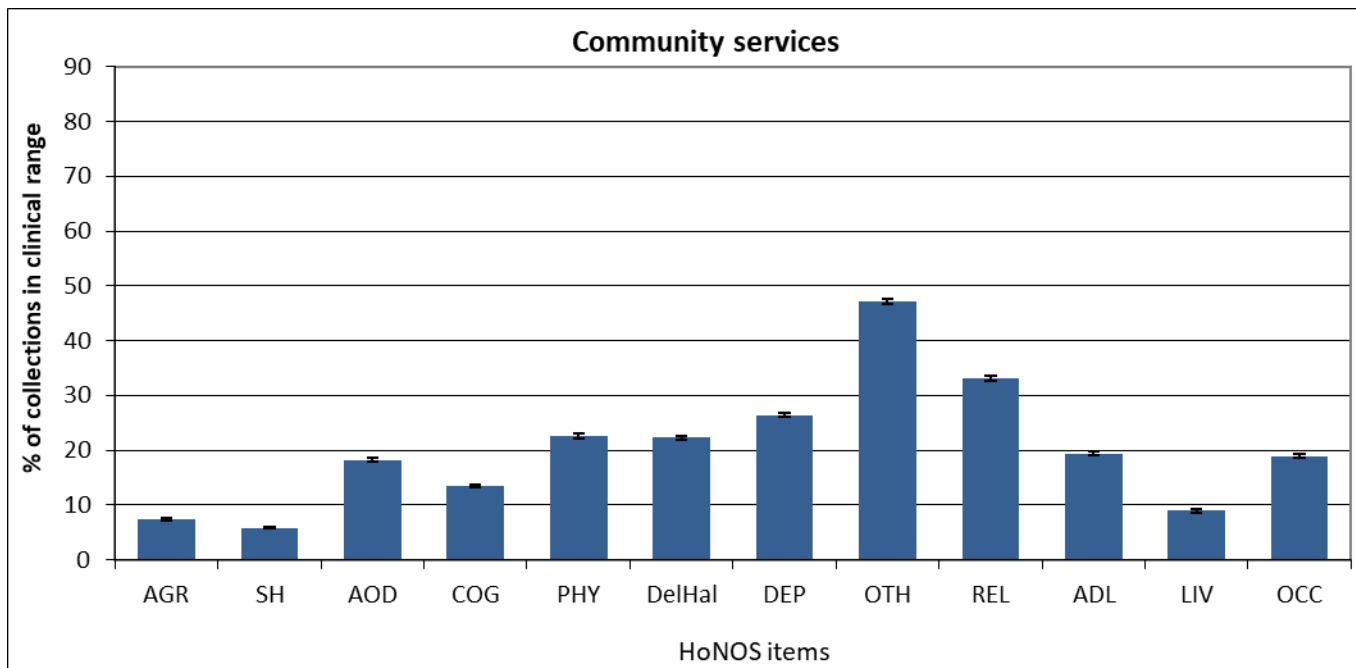
## Inpatient services

First 6 HoNOS items														
Team type	N		AGR		SH		AOD		COG		PHY		DelHal	
	Adm	Disch	Adm	Disch	Adm	Disch	Adm	Disch	Adm	Disch	Adm	Disch	Adm	Disch
Alcohol and drug team	263	246	5%	10%	2%	1%	100%	99%	4%	7%	30%	26%	2%	1%
Eating disorders team	24		4%		17%		17%		8%		38%		4%	
Forensic team	29	32	45%	0%	10%	0%	36%	9%	18%	3%	14%	3%	45%	13%
Inpatient team	9,148	8,832	44%	10%	34%	9%	44%	24%	22%	9%	20%	12%	52%	19%
Maternal mental health team	87	68	16%	12%	26%	6%	12%	4%	9%	1%	15%	4%	15%	6%
Older people team	34	32	26%	13%	12%	0%	15%	6%	53%	50%	53%	38%	24%	28%
Specialty team		23		13%		30%		9%		0%		4%		13%
<b>Total</b>	<b>9,601</b>	<b>9,252</b>	<b>43%</b>	<b>10%</b>	<b>33%</b>	<b>9%</b>	<b>45%</b>	<b>26%</b>	<b>21%</b>	<b>9%</b>	<b>20%</b>	<b>13%</b>	<b>50%</b>	<b>18%</b>

Second 6 HoNOS items												
Team type	DEP		OTH		REL		ADL		LIV		OCC	
	Adm	Disch	Adm	Disch	Adm	Disch	Adm	Disch	Adm	Disch	Adm	Disch
Alcohol and drug team	44%	26%	21%	13%	10%	4%	8%	2%	20%	7%	16%	1%
Eating disorders team	75%		92%		29%		25%		4%		13%	
Forensic team	32%	0%	48%	25%	45%	13%	38%	13%	19%	9%	29%	6%
Inpatient team	48%	20%	67%	29%	54%	30%	30%	12%	22%	11%	25%	13%
Maternal mental health team	79%	40%	79%	72%	41%	32%	32%	9%	10%	9%	12%	4%
Older people team	35%	6%	41%	29%	53%	52%	44%	56%	30%	24%	34%	19%
Specialty team		35%		74%		39%		22%		17%		26%
<b>Total</b>	<b>48%</b>	<b>20%</b>	<b>66%</b>	<b>29%</b>	<b>52%</b>	<b>29%</b>	<b>30%</b>	<b>12%</b>	<b>22%</b>	<b>11%</b>	<b>25%</b>	<b>13%</b>

**Notes:** Percentage of service users in the clinical range (2, 3 or 4) for each HoNOS item. Community discharge does not include discharge to an inpatient unit. **Interpretation:** The higher the percentage, the more prevalent the difficulty measured by the item is amongst service users. A greater decrease between admission to discharge suggests a better outcome for the difficulty measured by the item. Items that show medium to high frequency and less change may suggest possible targets for service improvement. **Target:** A greater decrease from admission to discharge and smaller percentage in clinical range at discharge.

**Graph 5b: Percentage of collections in clinical range on each HoNOS item (review collections), New Zealand, Oct 2018 - Sep 2019**



**Notes:** Percentage of service users in the clinical range (2, 3 or 4) for each HoNOS item on review collections. Due to most admission being less than 91 days, the data set for review collections in inpatient settings is relatively small.

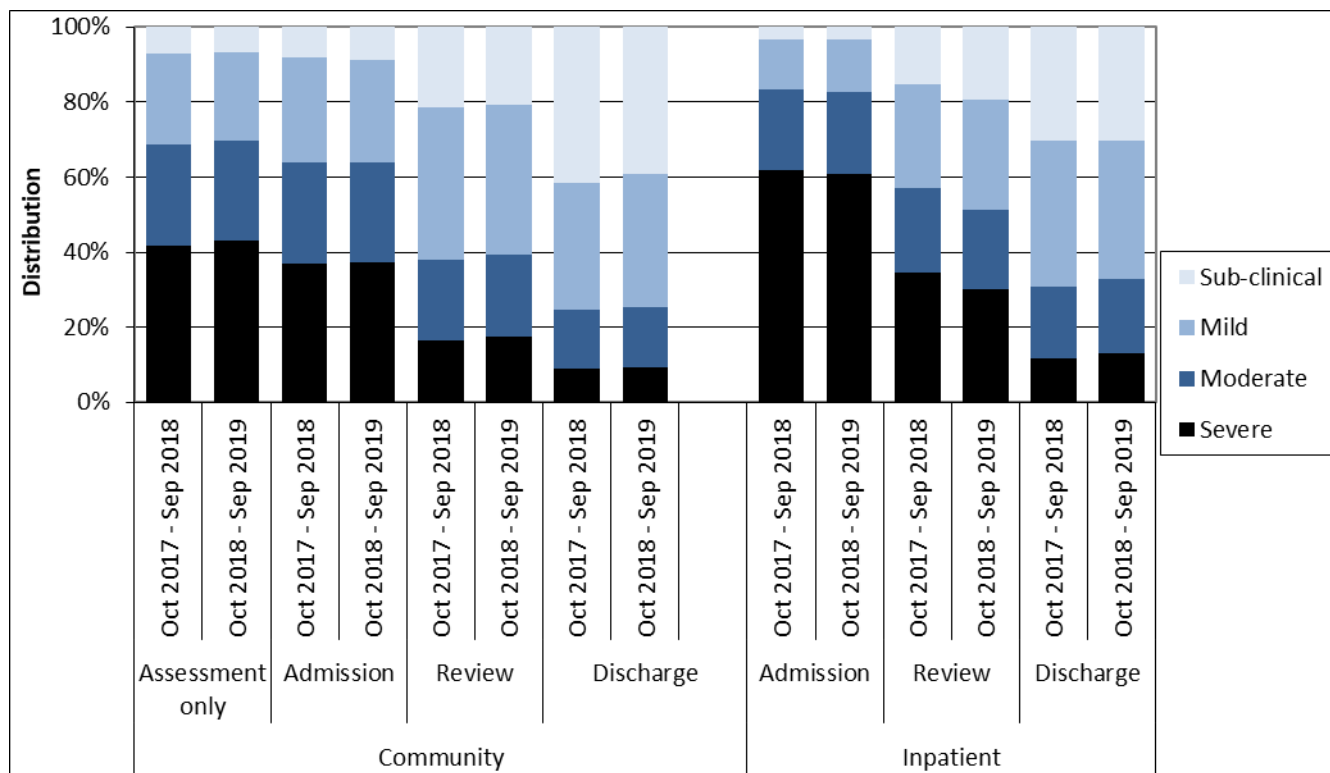
**Interpretation:** The longer the bar, the more prevalent the difficulty measured by the item is amongst service users.

**Table 5b: Percentage of collections in clinical range on each HoNOS item (review collections) by team, New Zealand, Oct 2018 - Sep 2019**

Team type	N	AGR	SH	AOD	COG	PHY	DelHal	DEP	OTH	REL	ADL	LIV	OCC
<b>Community services</b>													
Alcohol and drug team	699	8%	5%	69%	6%	22%	2%	21%	30%	26%	6%	6%	8%
Child and youth team	187	13%	16%	22%	13%	15%	15%	40%	62%	45%	23%	7%	23%
Co-existing problem team	39	5%	10%	41%	15%	28%	8%	31%	44%	36%	23%	11%	26%
Community team	35,947	7%	6%	17%	14%	23%	23%	26%	47%	34%	20%	9%	20%
Early intervention team	1,241	9%	5%	26%	16%	9%	31%	21%	51%	35%	22%	9%	16%
Eating disorders team	370	8%	12%	8%	13%	41%	7%	53%	95%	33%	28%	9%	19%
Forensic team	99	4%	0%	12%	2%	24%	21%	3%	21%	24%	15%	36%	54%
Intellectual disability dual diagnosis team	27	7%	0%	0%	70%	26%	22%	22%	26%	74%	74%	15%	22%
Kaupapa Māori team	2,842	10%	5%	27%	15%	22%	27%	25%	46%	31%	17%	12%	20%
Maternal mental health team	1,289	9%	4%	4%	5%	16%	1%	50%	70%	35%	11%	7%	10%
Needs assessment and service coordination team	34	6%	3%	24%	26%	41%	24%	12%	29%	32%	12%	12%	15%
Older people team	117	22%	3%	3%	61%	39%	21%	14%	25%	38%	61%	5%	14%
Pacific people team	1,042	3%	1%	11%	5%	13%	20%	9%	16%	14%	11%	5%	11%
Specialty team	52	8%	6%	6%	52%	37%	0%	44%	58%	63%	56%	13%	23%
<b>Total</b>	<b>43,989</b>	<b>7%</b>	<b>6%</b>	<b>18%</b>	<b>13%</b>	<b>23%</b>	<b>22%</b>	<b>26%</b>	<b>47%</b>	<b>33%</b>	<b>19%</b>	<b>9%</b>	<b>19%</b>
<b>Inpatient services</b>													
Forensic team	91	26%	7%	12%	38%	29%	63%	20%	58%	63%	53%	7%	19%
Inpatient team	1,125	18%	6%	18%	23%	22%	47%	17%	41%	44%	37%	16%	15%
<b>Total</b>	<b>1,243</b>	<b>19%</b>	<b>6%</b>	<b>18%</b>	<b>24%</b>	<b>23%</b>	<b>47%</b>	<b>18%</b>	<b>42%</b>	<b>46%</b>	<b>38%</b>	<b>15%</b>	<b>15%</b>

**Notes:** Percentage of service users in the clinical range (2, 3 or 4) for each HoNOS item on review collections. Due to most admission being less than 91 days, the data set for review collections in inpatient settings is relatively small. **Interpretation:** The higher the percentage, the more prevalent the difficulty measured by the item is amongst service users.

**Graph 6: Index of Severity ratings for HoNOS by collection type, New Zealand, Oct 2017 - Sep 2018 and Oct 2018 - Sep 2019**



**Notes:** Index of Severity: Sub clinical = all items <2, mild = at least one item >1 and all items <3, moderate = at least one item >=3, severe = at least 2 items >=3 using first 10 items. Community discharge does not include discharge to an inpatient unit.

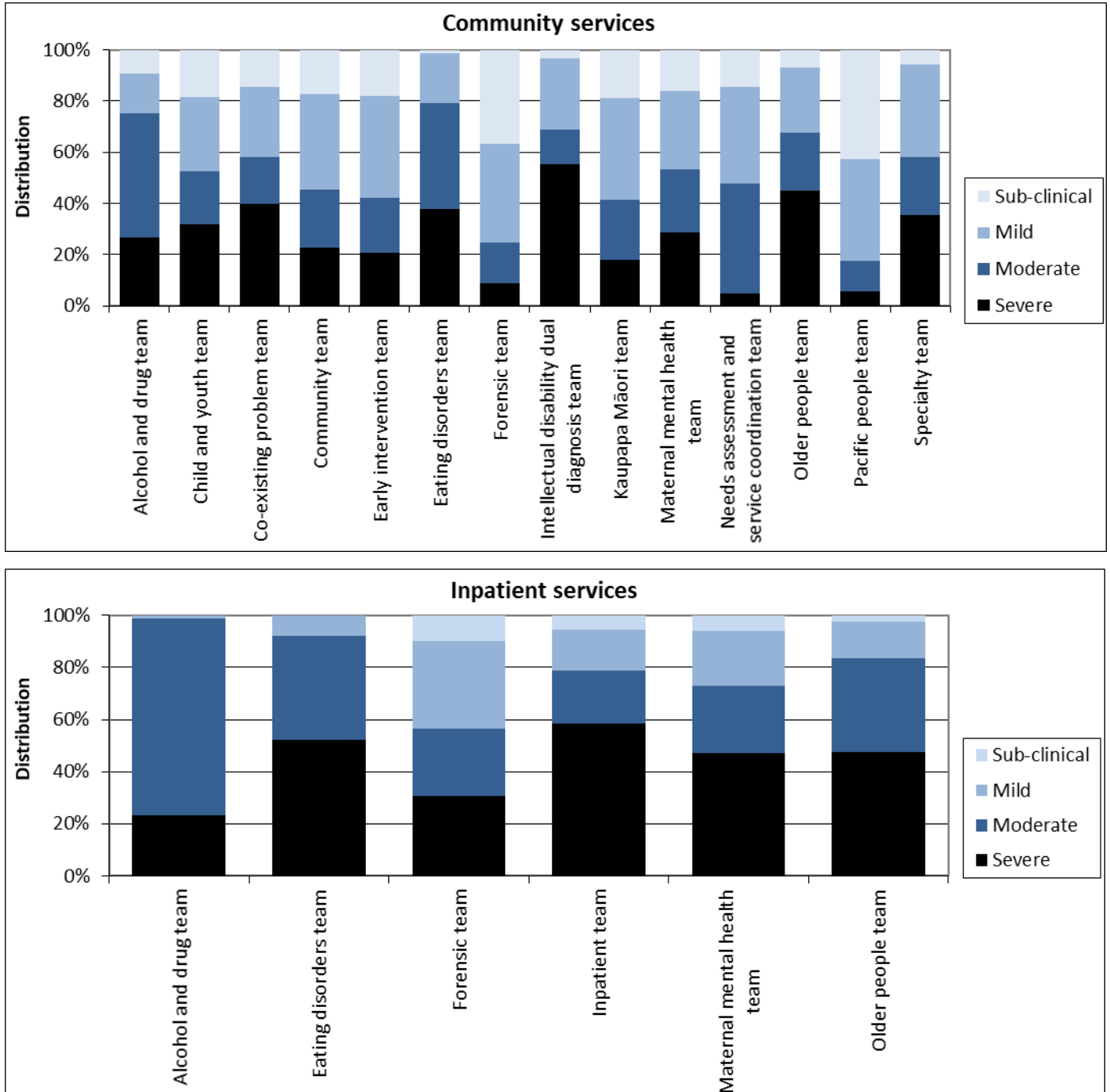
**Interpretation:** Darker bars indicate higher overall level of severity. More positive outcome shown by larger decrease in darker sections of bar between admission and discharge.



## 2. Other measures of service activity

This section presents other information related to data collected in PRIMHD that may be helpful for understanding how teams are operating. This includes information relevant to caseload intensity and team activity.

**Graph 7: Index of Severity for HoNOS (admission and review collections) by team, New Zealand, Oct 2018 - Sep 2019**



**Notes:** Only data related to collection at admission and review is included so that results reflect the severity of service users during their engagement with the service. Index of Severity: Sub clinical = all items <2, mild = at least one item >1 and all items <3, moderate = at least one item >=3, severe = at least 2 items >=3 using first 10 items.

**Interpretation:** This graph gives an impression of the overall severity of the caseload for different teams at admission. The longer the darker bar, the higher the overall severity of the team's caseload.

**Table 7: Index of Severity for HoNOS by collection type and team, New Zealand, Oct 2018 - Sep 2019**

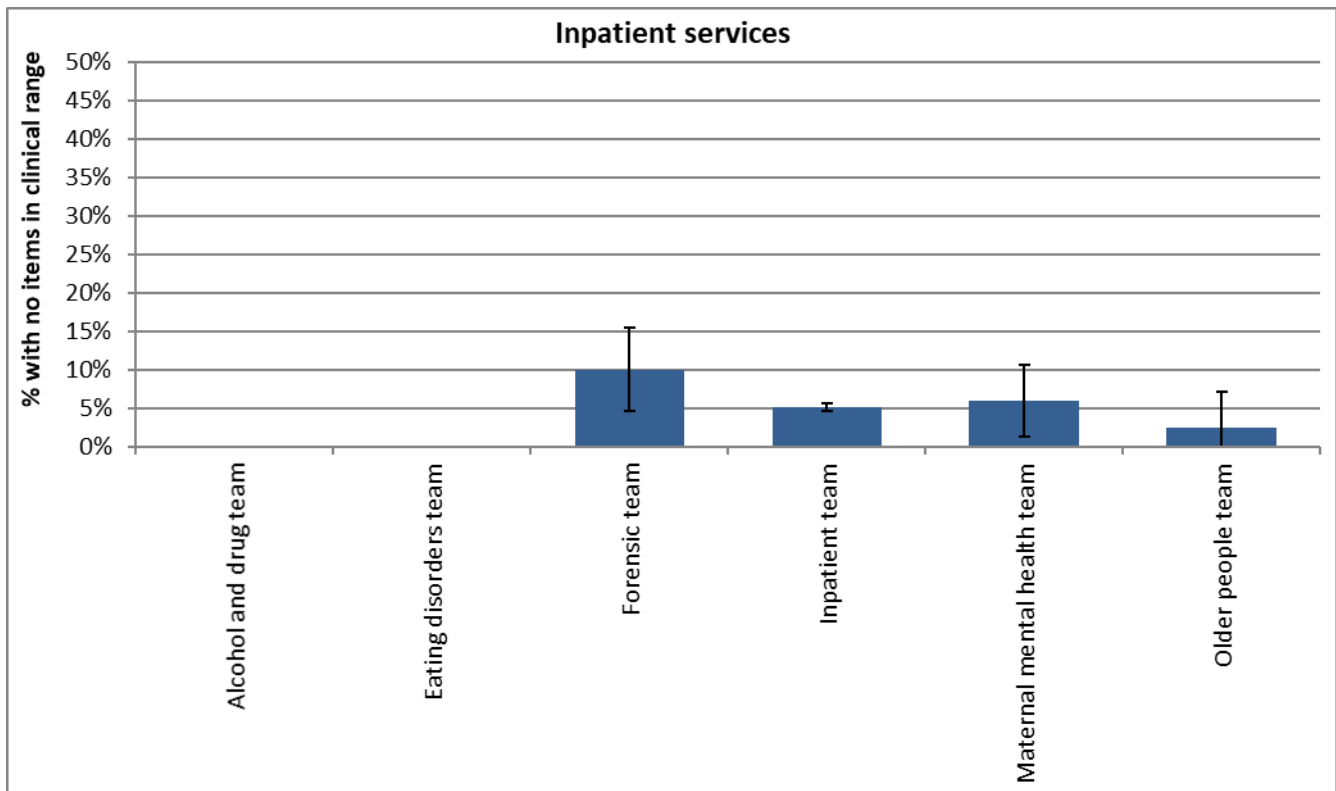
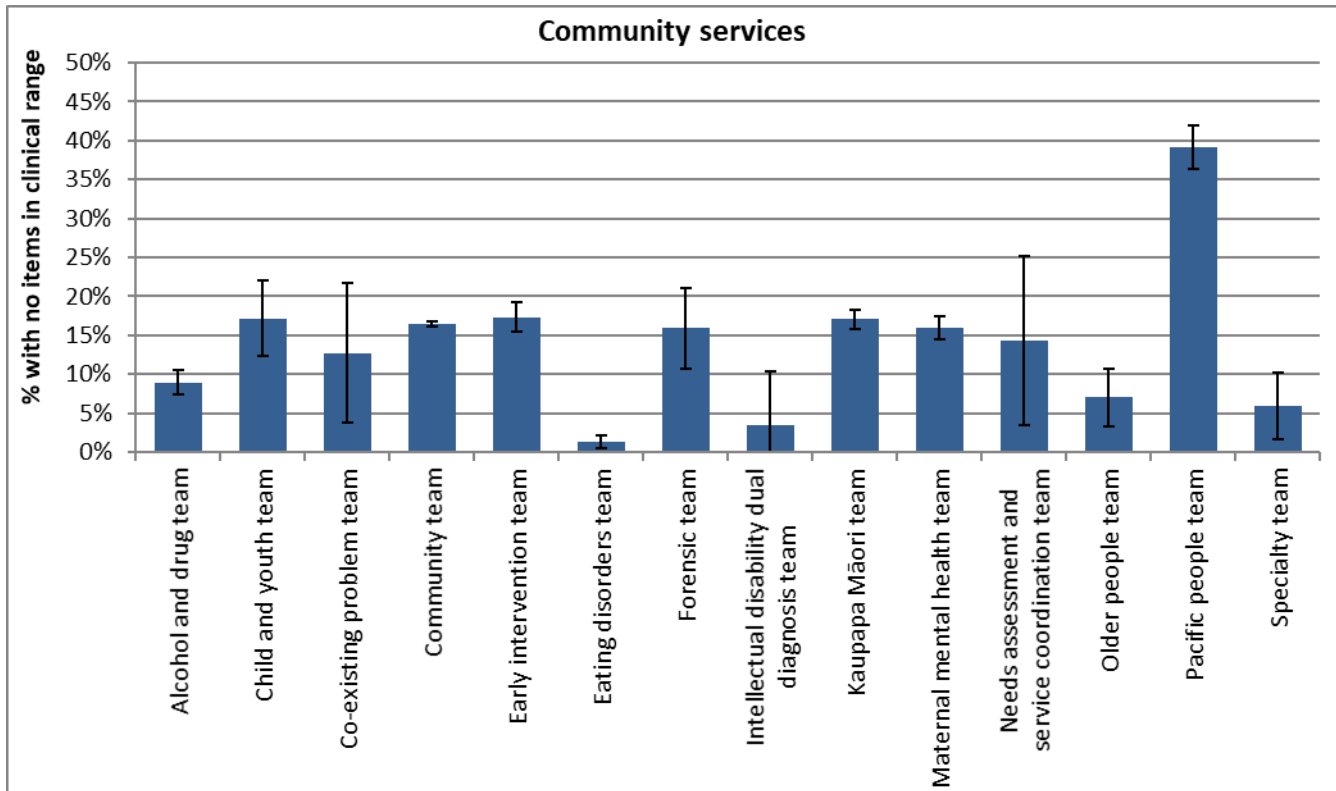
Team type	Assessment only					Admission					Review					Discharge				
	Sub	Mild	Mod	Sev	N	Sub	Mild	Mod	Sev	N	Sub	Mild	Mod	Sev	N	Sub	Mild	Mod	Sev	N
<b>Community services</b>																				
Alcohol and drug team	6%	14%	35%	46%	461	3%	14%	45%	38%	580	15%	17%	51%	17%	699	34%	34%	21%	11%	297
Child and youth team	4%	25%	29%	42%	48	8%	19%	33%	40%	52	21%	32%	18%	29%	187	20%	55%	12%	13%	69
Co-existing problem team											21%	33%	21%	26%	39					
Community team	6%	24%	27%	44%	11,020	9%	28%	25%	38%	12,729	21%	40%	22%	17%	35,980	38%	36%	17%	10%	7,287
Early intervention team						10%	40%	21%	29%	335	20%	39%	22%	18%	1,241	36%	40%	18%	7%	148
Eating disorders team	0%	17%	33%	50%	36	0%	11%	47%	42%	330	2%	28%	36%	34%	370	29%	35%	23%	13%	171
Forensic team	47%	34%	15%	4%	73	27%	40%	19%	15%	96	46%	37%	13%	3%	99	76%	16%	4%	4%	114
Intellectual disability dual diagnosis team											4%	30%	15%	52%	27					
Kaupapa Māori team	8%	27%	25%	40%	359	8%	34%	27%	31%	510	21%	41%	23%	15%	2,843	33%	39%	16%	13%	324
Maternal mental health team	26%	42%	13%	18%	197	10%	24%	27%	39%	1,030	21%	36%	23%	20%	1,289	52%	34%	9%	5%	959
Needs assessment and service coordination team											18%	38%	41%	3%	34					
Older people team	13%	19%	13%	56%	32	3%	25%	25%	47%	68	9%	26%	21%	44%	117	10%	24%	27%	39%	41
Pacific people team						29%	36%	19%	16%	140	45%	40%	11%	4%	1,042	62%	28%	6%	4%	71
Specialty team	6%	10%	25%	59%	144	3%	39%	24%	34%	67	10%	33%	21%	37%	52	29%	29%	29%	14%	21
<b>Total</b>	<b>7%</b>	<b>24%</b>	<b>27%</b>	<b>43%</b>	<b>12,398</b>	<b>9%</b>	<b>27%</b>	<b>27%</b>	<b>37%</b>	<b>15,968</b>	<b>21%</b>	<b>40%</b>	<b>22%</b>	<b>17%</b>	<b>44,023</b>	<b>39%</b>	<b>35%</b>	<b>16%</b>	<b>9%</b>	<b>9,520</b>

Team type	Assessment only					Admission					Review					Discharge				
	Sub	Mild	Mod	Sev	N	Sub	Mild	Mod	Sev	N	Sub	Mild	Mod	Sev	N	Sub	Mild	Mod	Sev	N
<b>Inpatient services</b>																				
Alcohol and drug team						0%	1%	76%	24%	263						0%	3%	79%	18%	246
Eating disorders team						0%	4%	42%	54%	24										
Forensic team						17%	28%	21%	34%	29	8%	35%	27%	30%	91	63%	31%	0%	6%	32
Inpatient team						4%	14%	20%	62%	9,169	21%	29%	20%	30%	1,125	31%	38%	18%	13%	8,836
Maternal mental health team						5%	20%	28%	48%	87						19%	38%	25%	18%	68
Older people team						3%	15%	26%	56%	34						16%	28%	25%	31%	32
Specialty team																4%	61%	17%	17%	23
<b>Total</b>						<b>3%</b>	<b>14%</b>	<b>22%</b>	<b>61%</b>	<b>9,622</b>	<b>19%</b>	<b>29%</b>	<b>21%</b>	<b>30%</b>	<b>1,243</b>	<b>30%</b>	<b>37%</b>	<b>20%</b>	<b>13%</b>	<b>9,256</b>

**Notes:** Sub = sub clinical, Mild = mild, Mod = moderate, Sev = severe on Index of Severity. Only admission collection data is included so that results reflect the severity of service users during their engagement with the service. Index of Severity: Sub clinical = all items <2, mild = at least one item >1 and all items <3, moderate = at least one item >=3, severe = at least 2 items >=3 using first 10 items. Community discharge does not include discharge to an inpatient unit.

**Interpretation:** Larger percentages in the columns to the right for each type of collection, the higher the overall severity of the team's caseload.

**Graph 8: Collections with no HoNOS items in clinical range, New Zealand, Oct 2018 - Sep 2019**



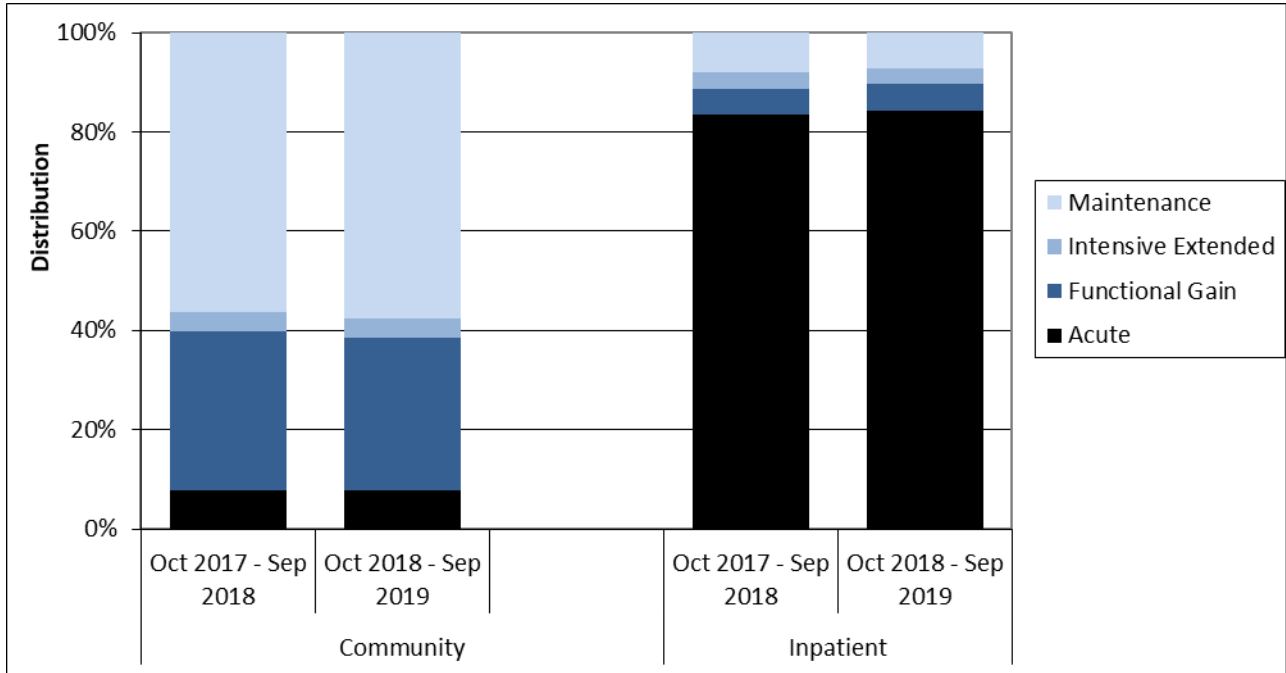
**Notes:** Includes admission and review collections. Shows percentage of service users with all HoNOS items less than two, ie no HoNOS items in the clinical range. **Interpretation:** There are a variety of reasons that may make it appropriate for service users to remain in the service even though they show no HoNOS items in the clinical range. However, teams showing a larger or substantial percentage of service users with no HoNOS items in the clinical range could benefit from reviewing these cases to ensure that the service remains appropriate for this service user.

**Table 8: Collections with no HoNOS items in clinical range, New Zealand, Oct 2018 - Sep 2019**

Team type	Number of collections with no items in clinical range	Percentage with no items in clinical range
<b>Community services</b>		
Alcohol and drug team	114	9%
Child and youth team	41	17%
Co-existing problem team	7	13%
Community team	7,971	16%
Early intervention team	273	17%
Eating disorders team	9	1%
Forensic team	31	16%
Intellectual disability dual diagnosis team	1	3%
Kaupapa Māori team	572	17%
Maternal mental health team	370	16%
Needs assessment and service coordination team	6	14%
Older people team	13	7%
Pacific people team	463	39%
Specialty team	7	6%
<b>Total</b>	<b>9,878</b>	<b>16%</b>
<b>Inpatient services</b>		
Alcohol and drug team	0	0%
Eating disorders team	0	0%
Forensic team	12	10%
Inpatient team	527	5%
Maternal mental health team	6	6%
Older people team	1	2%
<b>Total</b>	<b>546</b>	<b>5%</b>

**Notes:** For further information see notes for Graph 8.

**Graph 9: Focus of care categories, New Zealand, Oct 2017 - Sep 2018 and Oct 2018 - Sep 2019**



**Notes:** Data from review and discharge collections.

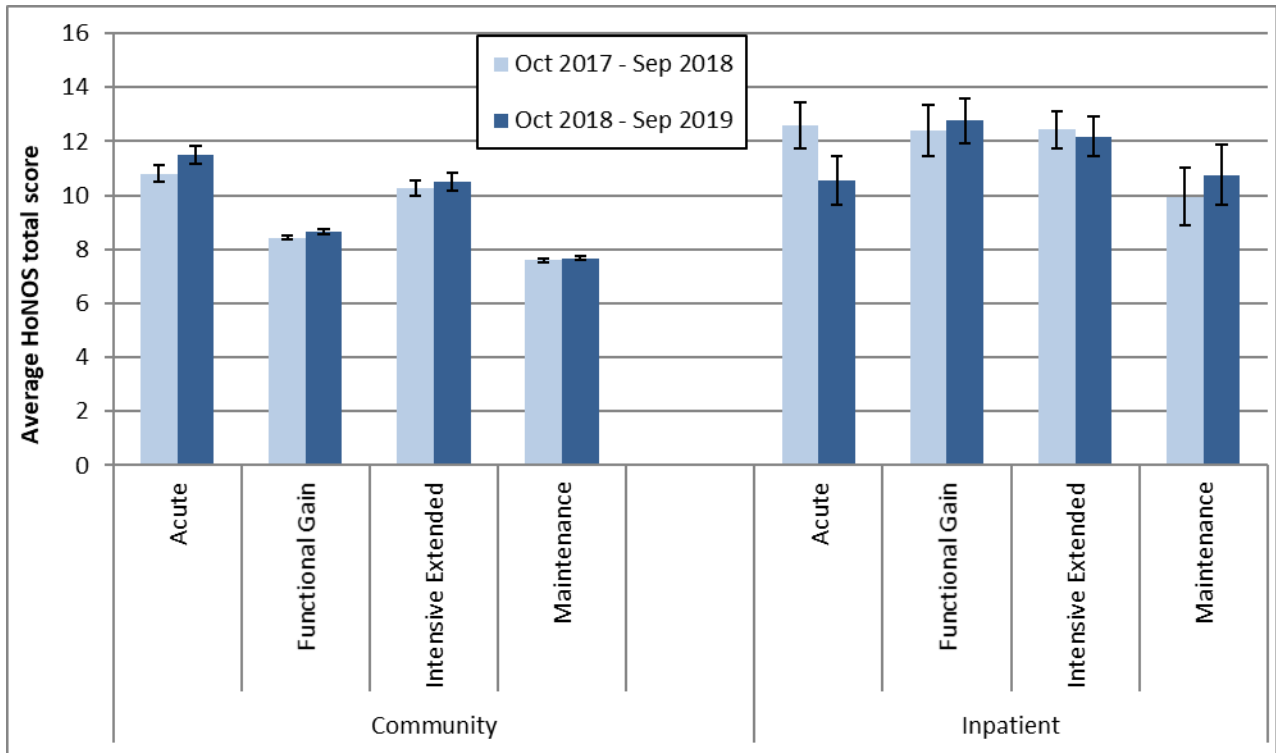
**Interpretation:** Darker bars indicate more intensive involvement in care, so a longer or darker bar in general suggests more intensive working. A longer functional gain bar and shorter maintenance bar potentially suggests more recovery focused ways of working.

**Table 9: Focus of care categories by team, New Zealand, Oct 2017 - Sep 2018 and Oct 2018 - Sep 2019**

Team type	Acute		Functional gain		Intensive extended		Maintenance		Number of collections	
	Last period	This period	Last period	This period	Last period	This period	Last period	This period	Last period	This period
<b>Community services</b>										
Alcohol and drug team	9%	8%	38%	42%	1%	1%	52%	50%	1,136	1,012
Child and youth team	4%	4%	28%	40%	9%	7%	59%	49%	296	247
Co-existing problem team	26%	10%	15%	14%	2%	2%	57%	74%	46	42
Community team	8%	8%	31%	30%	4%	4%	57%	58%	44,269	39,989
Early intervention team	4%	5%	47%	50%	4%	3%	46%	42%	1,157	1,319
Eating disorders team	8%	7%	64%	62%	16%	11%	12%	20%	516	565
Forensic team	5%	5%	3%	5%	3%	2%	89%	88%	300	129
Intellectual disability dual diagnosis team	4%	0%	0%	0%	0%	0%	96%	100%	24	26
Kaupapa Māori team	5%	5%	20%	16%	2%	3%	72%	76%	2,868	2,938
Maternal mental health team	11%	8%	51%	54%	2%	2%	36%	36%	2,415	2,144
Needs assessment and service coordination team	13%	4%	10%	20%	5%	7%	72%	70%	39	46
Older people team	13%	8%	13%	12%	3%	2%	70%	79%	104	103
Pacific people team	0%	1%	20%	12%	0%	0%	80%	87%	910	1,000
Specialist psychotherapy team	0%		86%		10%		5%		21	
Specialty team	6%	18%	28%	21%	17%	9%	48%	53%	155	80
<b>Total</b>	<b>8%</b>	<b>8%</b>	<b>32%</b>	<b>31%</b>	<b>4%</b>	<b>4%</b>	<b>56%</b>	<b>58%</b>	<b>54,257</b>	<b>49,651</b>
<b>Inpatient services</b>										
Alcohol and drug team	100%	100%	0%	0%	0%	0%	0%	0%	222	240
Forensic team	16%	12%	5%	10%	44%	66%	36%	12%	101	116
Inpatient team	84%	85%	5%	6%	3%	2%	8%	7%	8,880	8,565
Maternal mental health team	84%	92%	3%	1%	0%	0%	13%	7%	38	75
Older people team	70%	81%	0%	0%	0%	0%	30%	19%	20	21
<b>Total</b>	<b>83%</b>	<b>84%</b>	<b>5%</b>	<b>6%</b>	<b>3%</b>	<b>3%</b>	<b>8%</b>	<b>7%</b>	<b>9,292</b>	<b>9,056</b>

Notes: For further information see notes for Graph 9.

**Graph 10: HoNOS total score (review collections) by focus of care, New Zealand, Oct 2017 - Sep 2018 and Oct 2018 - Sep 2019**



**Notes:** This data is just for review collections.

**Interpretation:** Points are significantly different if error bars don't overlap. A general downward trend in scores from acute to maintenance focus of care might be expected.



**Table 10: HoNOS total score (review collections) by focus of care by team, New Zealand, Oct 2018 - Sep 2019**

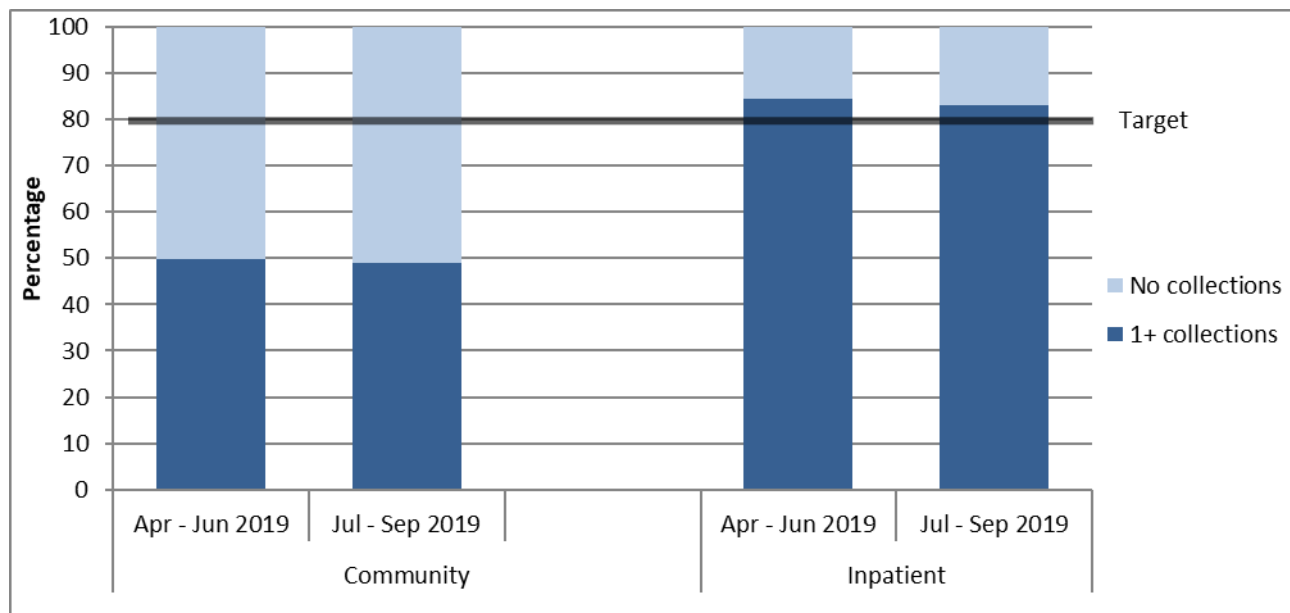
Team type	Acute			Functional gain			Intensive extended			Maintenance		
	N	Mean	CI	N	Mean	CI	N	Mean	CI	N	Mean	CI
<b>Community services</b>												
Alcohol and drug team	43	11.0	9.5-12.6	155	8.7	7.9-9.5				461	5.6	5.2-5.9
Child and youth team				71	9.9	8.4-11.3				82	7.9	6.5-9.3
Co-existing problem team										27	9.3	7.1-11.5
Community team	975	11.4	11.0-11.8	9,228	8.7	8.6-8.8	1,368	10.4	10.1-10.8	19,866	7.8	7.8-7.9
Early intervention team	29	16.0	12.9-19.0	553	8.3	7.8-8.7	34	9.8	7.4-12.3	446	7.9	7.3-8.4
Eating disorders team				202	10.2	9.3-11.1	40	12.1	9.8-14.5	90	10.0	8.7-11.2
Forensic team										84	7.4	6.4-8.5
Intellectual disability dual diagnosis team										23	10.1	8.1-12.1
Kaupapa Māori team	71	12.4	11.2-13.7	386	9.7	9.1-10.4	75	10.5	9.1-12.0	2,001	8.0	7.8-8.3
Maternal mental health team	73	7.9	6.8-9.1	688	7.9	7.5-8.3	21	7.4	5.4-9.4	411	5.8	5.4-6.2
Needs assessment & service coordination team										22	7.9	6.2-9.5
Older people team										59	8.7	7.3-10.1
Pacific people team				87	5.0	4.1-5.9				813	4.3	4.0-4.5
Specialty team										27	9.7	7.6-11.8
<b>Total</b>	<b>1,223</b>	<b>11.5</b>	<b>11.1-11.9</b>	<b>11,409</b>	<b>8.7</b>	<b>8.6-8.8</b>	<b>1,573</b>	<b>10.5</b>	<b>10.2-10.8</b>	<b>24,412</b>	<b>7.7</b>	<b>7.6-7.7</b>
<b>Inpatient services</b>												
Forensic team							73	13.2	12.1-14.4			
Inpatient team	278	10.6	9.7-11.6	199	12.9	12.0-13.7	143	11.6	10.7-12.5	132	11.1	9.9-12.2
<b>Total</b>	<b>298</b>	<b>10.5</b>	<b>9.6-11.5</b>	<b>204</b>	<b>12.8</b>	<b>11.9-13.6</b>	<b>217</b>	<b>12.2</b>	<b>11.4-12.9</b>	<b>142</b>	<b>10.7</b>	<b>9.6-11.9</b>

**Notes:** For further information see notes for Graph 10.

### 3. Collection completion and validity

This section presents information about the completeness and validity of the data on which the remainder of this report is based. It also shows the current targets for the variables presented.

**Graph 11: Percentage of service users with at least one collection during the period, New Zealand, Apr – Jun 2019 and Jul – Sep 2019 (18 to 64 years)**

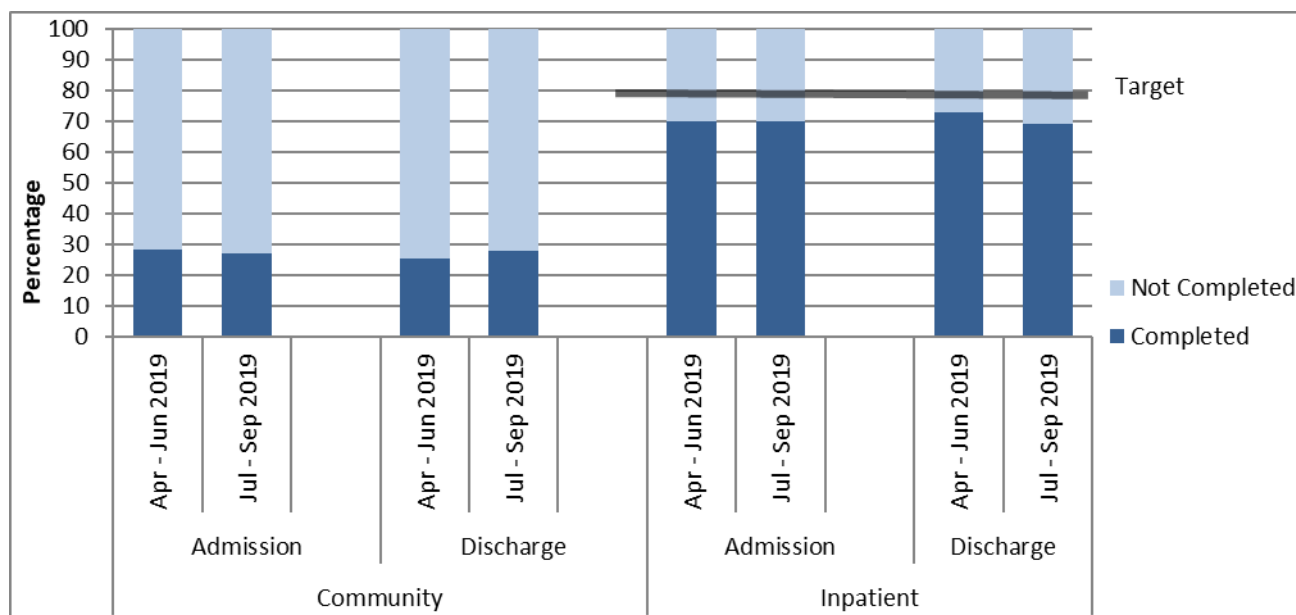


**Notes:** Community compliance is affected by crisis teams completing triage or brief assessment type activity which is not a comprehensive assessment.

**Interpretation:** The longer the dark part of the bar, the more completely the data set includes all service users, and the more meaningful and representative the graphs, tables, and analyses using this data will be. The data is approximate due to movements of service users between teams and similar variations; however, it does provide a reasonably accurate representation of completion of measures. The data only includes valid collections.

**Target:** To meet or exceed the target shown on the graph for the percentage of service users with at least one collection within the period.

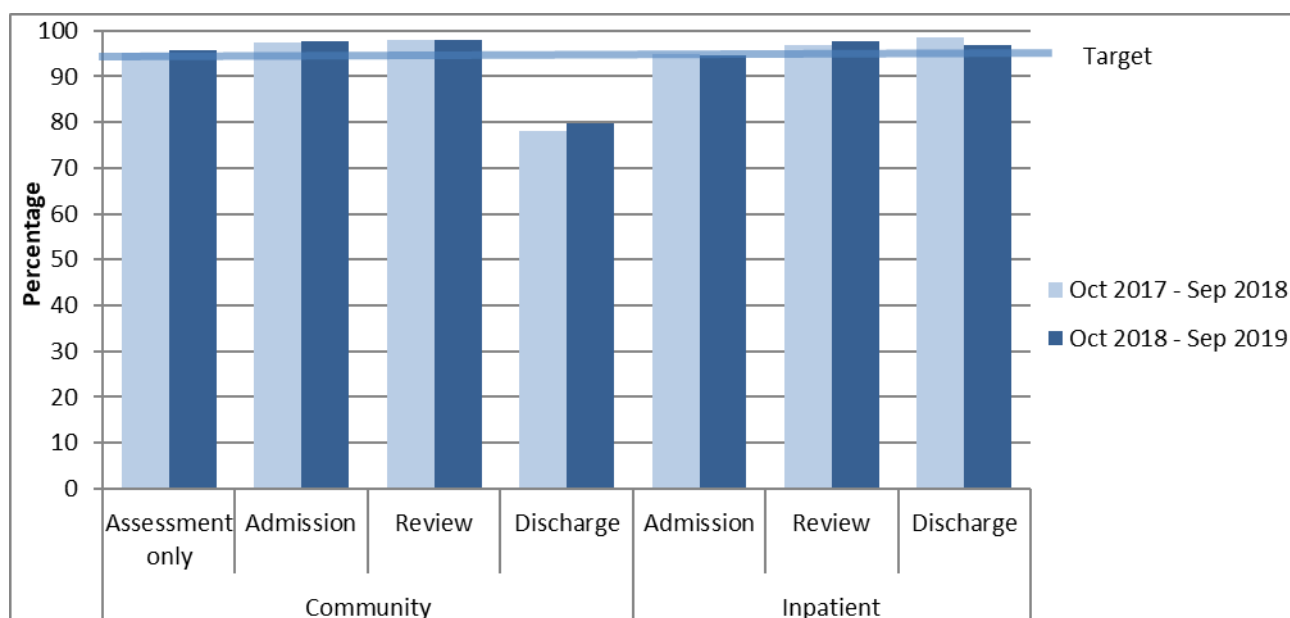
**Graph 12: Percentage of service users with admission and discharge collections completed, New Zealand, Apr – Jun 2019 and Jul – Sep 2019 (18 to 64 years)**



**Notes:** Community compliance is affected by crisis teams completing triage or brief assessment type activity which is not a comprehensive assessment.

**Interpretation:** The longer the dark bar, the larger the percentage of admission and discharge that had the relevant data collection type. Data is approximate due to movements of service users between teams and similar variations; however, it does provide a reasonably accurate representation of completion of measures. The data only includes valid collections.

**Graph 13: Percentage of valid collections, HoNOS, New Zealand, Oct 2017 - Sep 2018 and Oct 2018 - Sep 2019**



**Notes:** Valid = Two or fewer of the 12 items scored as unknown or missing. Discharge exclude collection types for lost to care, discharge dead and brief episode of care. Collection in drug and alcohol teams is not required, therefore AOD data is excluded.

**Interpretation:** The longer the dark lines, the higher the percentage of valid scores.

**Target:** Aim for 95% valid collections.

**Table 13: Invalid collections by team, by HoNOS item, New Zealand, Oct 2018 - Sep 2019**

Team type	% Invalid			Number of invalid ratings by HoNOS item												Total number
	Adm	Rev	Dch	1	2	3	4	5	6	7	8	9	10	11	12	
<b>Community services</b>																
Child and youth team	2%	3%	11%	18	20	23	17	20	21	18	18	18	17	19	18	382
Community team	2%	2%	20%	3,816	3,948	4,605	4,062	3,996	4,055	4,090	4,247	4,175	4,164	4,365	4,532	74,712
Early intervention team	3%	2%	18%	99	107	108	106	103	102	103	117	101	103	112	104	2,017
Eating disorders team	1%	2%	7%	27	31	32	30	27	28	35	29	30	30	32	34	1,021
Forensic team	1%	2%	45%	103	104	113	103	104	107	105	105	109	108	112	113	503
Intellectual disability dual diagnosis team		0%		4	4	4	4	4	4	4	5	4	4	5	4	41
Kaupapa Māori team	3%	2%	17%	164	169	218	173	175	180	175	187	183	186	182	181	4,389
Maternal mental health team	2%	2%	22%	362	366	400	368	374	365	361	366	366	373	375	375	3,992
Older people team	4%	1%	18%	9	19	10	10	11	14	16	29	12	11	14	15	284
Pacific people team	4%	2%	17%	38	42	42	40	46	45	41	42	44	56	51	69	1,361
Specialty team	4%	10%	7%	12	17	16	17	13	16	16	13	64	73	77	82	386
<b>Total</b>	<b>2%</b>	<b>2%</b>	<b>20%</b>	<b>4,652</b>	<b>4,827</b>	<b>5,571</b>	<b>4,930</b>	<b>4,873</b>	<b>4,937</b>	<b>4,964</b>	<b>5,158</b>	<b>5,106</b>	<b>5,125</b>	<b>5,345</b>	<b>5,527</b>	<b>89,104</b>

Team type	% Invalid			Number of invalid ratings by HoNOS item												Total number
	Adm	Rev	Dch	1	2	3	4	5	6	7	8	9	10	11	12	
<b>Inpatient services</b>																
Eating disorders team	0%			0	0	0	0	0	0	0	0	0	0	0	0	43
Forensic team	15%	0%	0%	1	1	2	2	0	3	2	3	2	3	5	5	156
Inpatient team	5%	3%	3%	318	387	747	513	430	440	500	749	671	618	955	1,213	19,611
Maternal mental health team	5%		10%	7	11	18	11	11	12	11	14	11	10	14	16	178
Older people team	13%		9%	3	6	4	4	4	6	5	6	6	4	21	20	82
Specialty team			0%	0	0	0	0	0	0	0	0	1	1	0	0	35
<b>Total</b>	<b>5%</b>	<b>2%</b>	<b>3%</b>	<b>329</b>	<b>405</b>	<b>771</b>	<b>530</b>	<b>445</b>	<b>461</b>	<b>518</b>	<b>772</b>	<b>691</b>	<b>636</b>	<b>995</b>	<b>1,255</b>	<b>20,112</b>

**Notes:** Percentage of invalid collections = the percentage of collections that had three or more of the 12 items scored as unknown or missing. Number of invalid ratings by HoNOS item = for each of the HoNOS items, the number of collections for which that item was unknown or missing. Discharge excludes collection types for lost to care, deceased and brief episode of care. Collection in drug and alcohol teams is not required, therefore AOD data is excluded.

**Interpretation:** The lower the percentage of invalid collections by team, the higher the percentage of valid scores. The lower the number of invalid collections by HoNOS item, the more collections that have valid data on that HoNOS item.

**Target:** Aim for 95% valid collections (5% invalid collections) or better. Aim for as few invalid items as possible, with all items having a similar validity rate.