



PRIMHD summary report – HoNOS

Health of the Nation Outcomes Scales – working age adults report for New Zealand



Programme for the Integration of Mental Health Data

tepou.co.nz

This report summarises national Programme for the Integration of Mental Health Data (PRIMHD) data submitted by district health boards (DHB). In particular, it presents Health of the National Outcomes Scale for working aged adults (HoNOS) data, from services where HoNOS is the primary measure.

This report is organised into three major sections that provide information about:

- 1. Outcomes related information:** This provides indications about what changes have occurred for service users between entering and leaving the service. Outcome is assessed by comparing the group admitted and the group discharged from the service in the same time period. This should provide a reasonable indication of outcomes achieved unless the service user mix has changed significantly over the usual period for which service is delivered.
- 2. Service related information:** This provides information about the services, such as the overall severity of service users who use different services.
- 3. Collection completion and validity:** This details the completeness of the data set provided by your mental health services. This is important because it indicates how valid and reliable the data sets are likely to be. The less complete the data set, the less valid the information is likely to be.

In many cases the data is presented graphically for New Zealand, and then presented as a table for the individual team types (see team type classification factsheet).

The time period covered differs for the different data presented. See the title or the notes under the graphs or tables for information about the time period covered. Unless otherwise stated, the notes under the graphs also apply to the corresponding table.

For all graphs and tables, if there are less than twenty cases in the data set, then the information is not presented. This is because small samples frequently provide inaccurate and potentially misleading results. See the notes and user guide for other important information about the graphs and tables.

Where appropriate, the statistical **confidence interval** is presented. This is shown by error bars (small lines above and below the average) on the graphs, and a score range in some tables. As a rule of thumb, if the confidence intervals of two data points do not overlap, the two points can be considered to be significantly different. If the confidence intervals of the data points do overlap, we assume the points are not significantly different. It is important to note that statistical significance may not indicate a clinically significant difference.

See the associated user guide for more information about how to understand and use the data presented in this report.

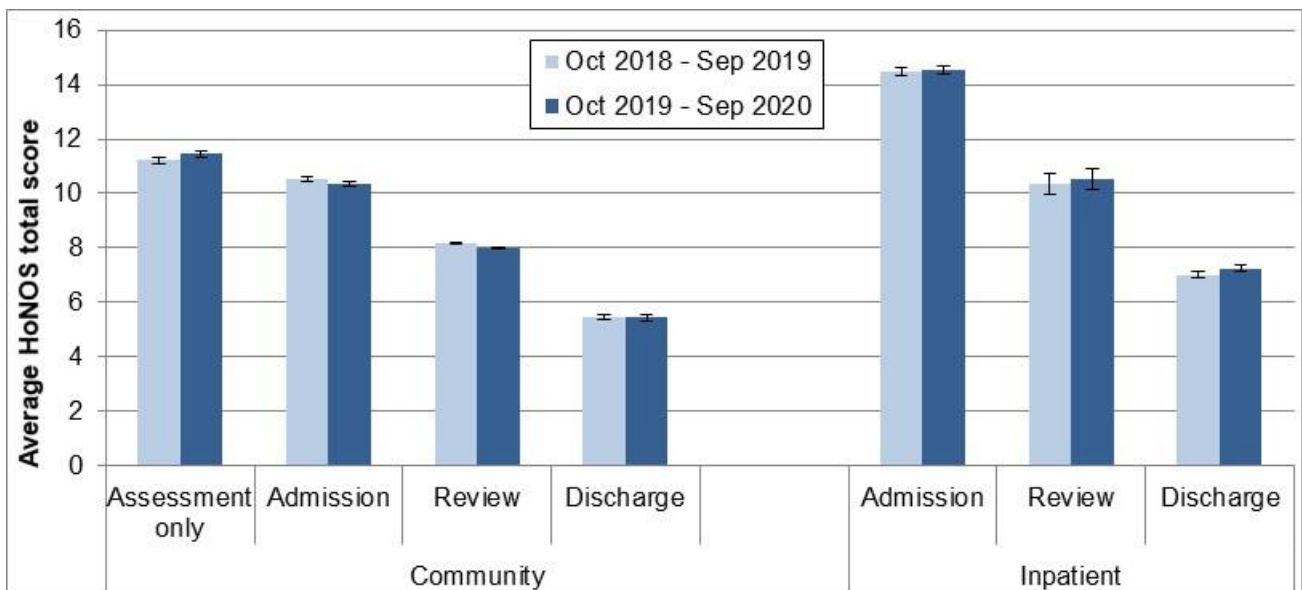
Data for graphs 11 and 12 was extracted 14 January 2021 from PRIMHD by the Ministry of Health and formatted by Te Pou. The data for graphs and tables 1 to 10 and 13 was extracted 28 December 2020 from PRIMHD by the Ministry of Health, then analysed and formatted by Te Pou.

Please note: For this period a few DHBs have incomplete data which will affect New Zealand totals.

1. Outcomes – changes in service user status

This section presents HoNOS data indicating the status of service users at different stages of their contact with DHB mental health services. Graph and Table 1, and Graph 2 show results from HoNOS total scores. Graphs and Tables 3 to 5b show results related to the percentage of HoNOS items in the clinical range. Table 6 shows results from the Index of Severity derived from HoNOS scores.

Graph 1: Average HoNOS total score (12 items) by collection type: New Zealand, Oct 2018 - Sep 2019 and Oct 2019 - Sep 2020



Notes: Error bars indicate the confidence intervals around the data point. If error bars overlap, the data points are not significantly different. Community discharge does not include discharge to an inpatient unit.

Interpretation: Decrease between admission and discharge is an indication of the outcomes achieved by the service user and service. The greater the decrease between admission and discharge, and the lower the average HoNOS score at discharge, the more positive the outcome.

Target: A greater decrease from admission to discharge and lower average rating at discharge.

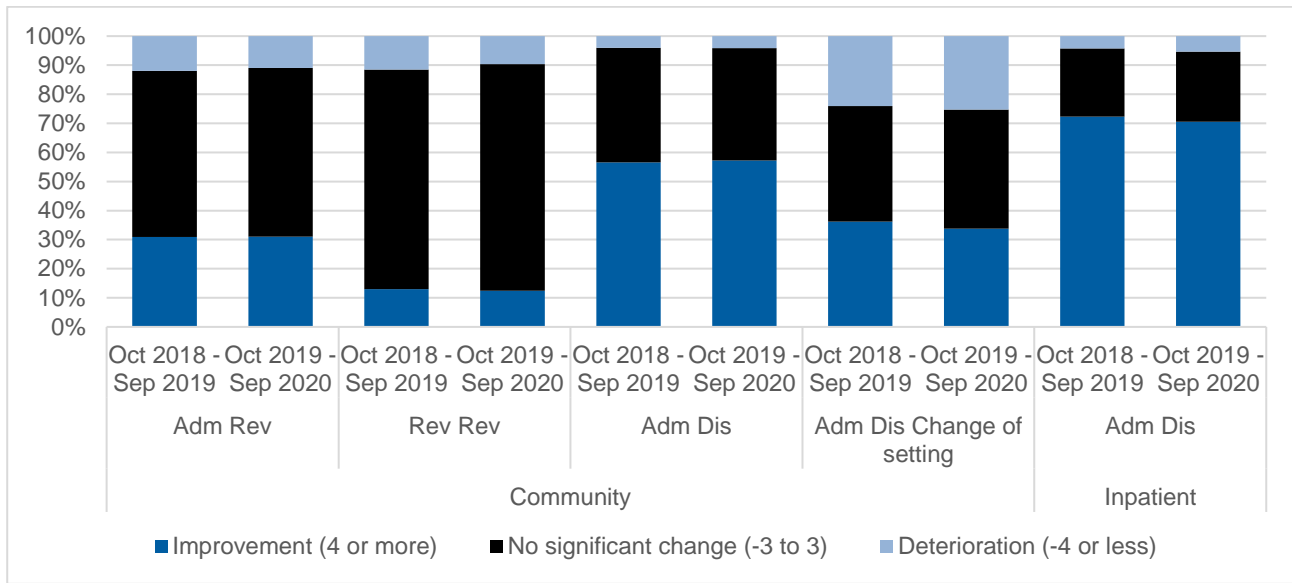
Table 1: Average HoNOS total score (12 items), by collection type and team: New Zealand, Oct 2019 - Sep 2020

Team type	Assessment only			Admission			Review			Discharge		
	N	Mean	CI	N	Mean	CI	N	Mean	CI	N	Mean	CI
Community services												
Alcohol and drug team	273	10.7	10.0-11.4	480	10.3	9.8-10.8	601	8.8	8.4-9.3	240	5.4	4.8-6.0
Child and youth team	37	11.2	8.8-13.7	61	11.8	10.2-13.5	186	8.5	7.6-9.4	78	7.1	5.8-8.3
Co-existing problem team							36	8.5	7.1-10.0			
Community team	10,820	11.5	11.4-11.6	10,870	10.6	10.4-10.7	35,012	8.0	8.0-8.1	6,161	5.7	5.6-5.8
Early intervention team				352	10.6	9.9-11.3	1,262	8.2	7.9-8.6	135	4.5	3.8-5.3
Eating disorders team	32	9.7	7.5-11.9	361	11.0	10.4-11.5	272	8.5	7.9-9.1	192	5.5	4.8-6.2
Forensic team	42	10.1	8.5-11.6	31	10.0	8.0-12.1	98	6.6	5.5-7.6	69	3.6	2.7-4.6
Kaupapa Māori team	325	11.4	10.8-12.0	514	10.1	9.6-10.6	3,055	8.6	8.4-8.8	230	6.1	5.4-6.7
Maternal mental health team	148	7.0	6.2-7.8	1,017	8.4	8.1-8.7	1,184	7.1	6.8-7.4	884	3.6	3.4-3.9
Needs assessment and service coordination team							107	8.3	7.3-9.3			
Older people team	21	10.1	7.8-12.4	72	12.0	10.5-13.5	122	9.7	8.7-10.7	42	8.0	6.7-9.3
Pacific people team				160	7.0	6.3-7.7	1,267	4.7	4.5-4.9	79	2.7	2.1-3.3
Specialty team	158	18.4	17.2-19.7	63	11.1	10.0-12.2						
Total	11,887	11.5	11.3-11.6	14,011	10.4	10.3-10.5	43,238	8.0	7.9-8.0	8,127	5.4	5.3-5.5
Inpatient services												
Alcohol and drug team				228	9.5	9.0-10.0				213	7.3	6.8-7.8
Forensic team				22	13.0	8.5-17.5	56	14.0	12.4-15.6	25	6.2	2.8-9.6
Inpatient team				8,879	14.7	14.5-14.8	1,106	10.4	10.0-10.9	8,209	7.2	7.1-7.3
Maternal mental health team				96	10.6	9.5-11.6	19	5.2	3.0-7.3	77	7.8	6.5-9.2
Older people team										23	11.7	8.1-15.4
Specialty team				24	13.3	11.8-14.9				44	9.2	8.1-10.2
Total				9,280	14.5	14.4-14.7	1,183	10.5	10.1-10.9	8,608	7.2	7.1-7.4

Notes: N = number of collections in period. Average = average HoNOS (12 item) score, CI = confidence interval for average score. Community discharge does not include discharge to an inpatient unit.

Interpretation: If confidence intervals for two scores do not overlap, then the scores have a statistically significant difference. It is important to note that statistical significance may not indicate a clinically significant difference.

Graph 2: Difference in HoNOS total score (12 items) for matched pairs by pair type and setting, New Zealand, Oct 2018 - Sep 2019 and Oct 2019 - Sep 2020



Notes: Shows the difference of the matched pair between the start and end HoNOS total score. Community admission to discharge includes discharge no further care and discharge other.

Interpretation: The graphs compare two time periods. Dark blue band indicates percentage improvement within the given time period, while black band indicates no significant change and light blue deterioration. Improvement = 4 or more, no significant change = -3 to 3 and deterioration = -4 or less.

Target: A greater percentage increase in improvement for both community and inpatient settings and a smaller percentage in deterioration.

Table 2: Difference in HoNOS total score (12 items) for matched pairs by pair type and team, community New Zealand, Oct 2019 - Sep 2020

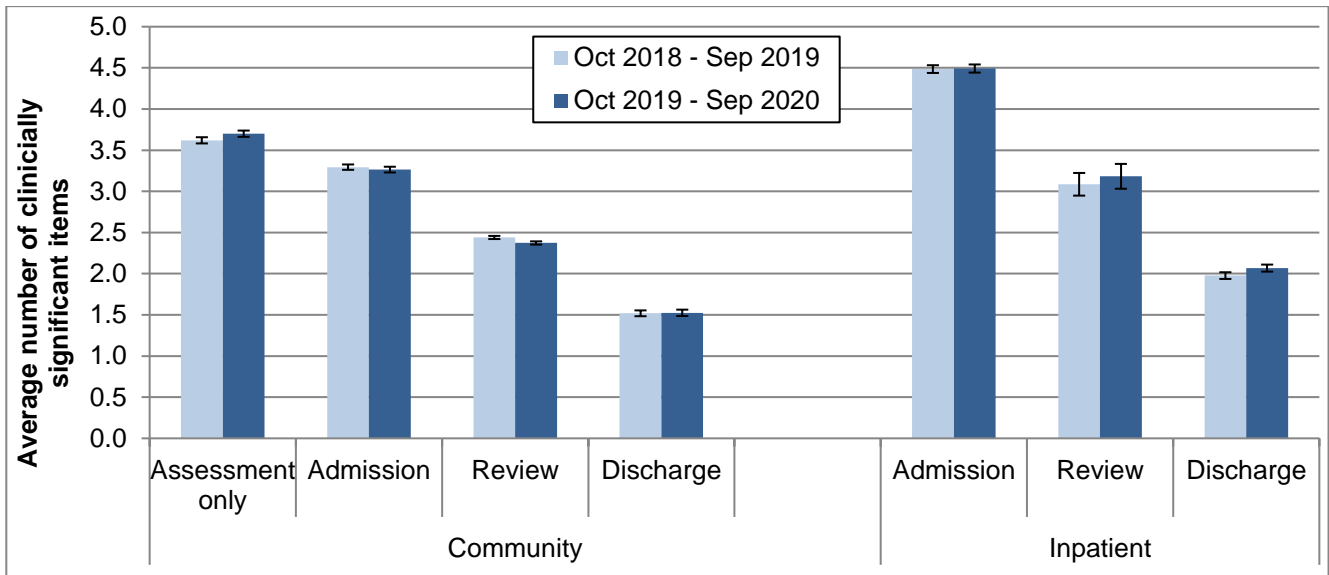
Team Type	Com Adm Rev				Com Rev Rev				Com Adm Dis				Com Adm Dis Change of setting			
	↓ Det	No SC	↑ Imp	N	↓ Det	No SC	↑ Imp	N	↓ Det	No SC	↑ Imp	N	↓ Det	No SC	↑ Imp	N
Alcohol and drug team	16%	43%	40%	67	18%	71%	11%	200	5%	44%	51%	175	18%	54%	29%	28
Child and youth team					9%	76%	15%	78								
Community team	11%	59%	31%	3,128	9%	79%	12%	18,278	4%	39%	57%	3,251	27%	40%	33%	1,904
Early intervention team	16%	47%	37%	139	16%	64%	20%	638	7%	40%	52%	84	24%	41%	35%	133
Eating disorders team	13%	63%	25%	40	12%	73%	14%	49	3%	41%	56%	118	7%	55%	38%	74
Forensic team					5%	81%	14%	42	0%	29%	71%	24				
Kaupapa Māori team	15%	60%	25%	175	11%	76%	13%	1,714	9%	41%	50%	104	28%	47%	26%	129
Maternal mental health team	6%	62%	32%	262	8%	79%	13%	434	1%	34%	64%	473	11%	42%	47%	95
Needs assessment and service coordination team					6%	94%	0%	67								
Older people team					5%	71%	24%	41	0%	53%	47%	30				
Pacific people team	13%	48%	39%	61	9%	80%	11%	730	5%	35%	59%	37	19%	44%	37%	59
Total	11%	58%	31%	3,915	10%	78%	12%	22,295	4%	39%	57%	4,327	25%	41%	34%	2,454

Notes: Shows the difference of the matched pair between the start and end HoNOS total score. Community admission to discharge includes discharge no further care and discharge other.

Interpretation: Improvement (↑Imp) = 4 or more, no significant change (No SC) = -3 to 3 and deterioration (↓Det) = -4 or less.

Target: A greater percentage increase in improvement for community setting and a smaller percentage in deterioration.

Graph 3: Average number of clinically significant HoNOS items by collection type: New Zealand, Oct 2018 - Sep 2019 and Oct 2019 - Sep 2020



Notes: Average number clinically significant items = the average number of items in the clinical range (2, 3 or 4) per collection. Community discharge does not include discharge to an inpatient unit.

Interpretation: Points are significantly different if error bars don't overlap. A decrease between admission and discharge is an indication of the outcomes achieved by the service and service user. A greater decrease between admission and discharge indicates a better outcome. A lower admission score could be indication of service users seeking out and being engaged by services at a lower level of severity.

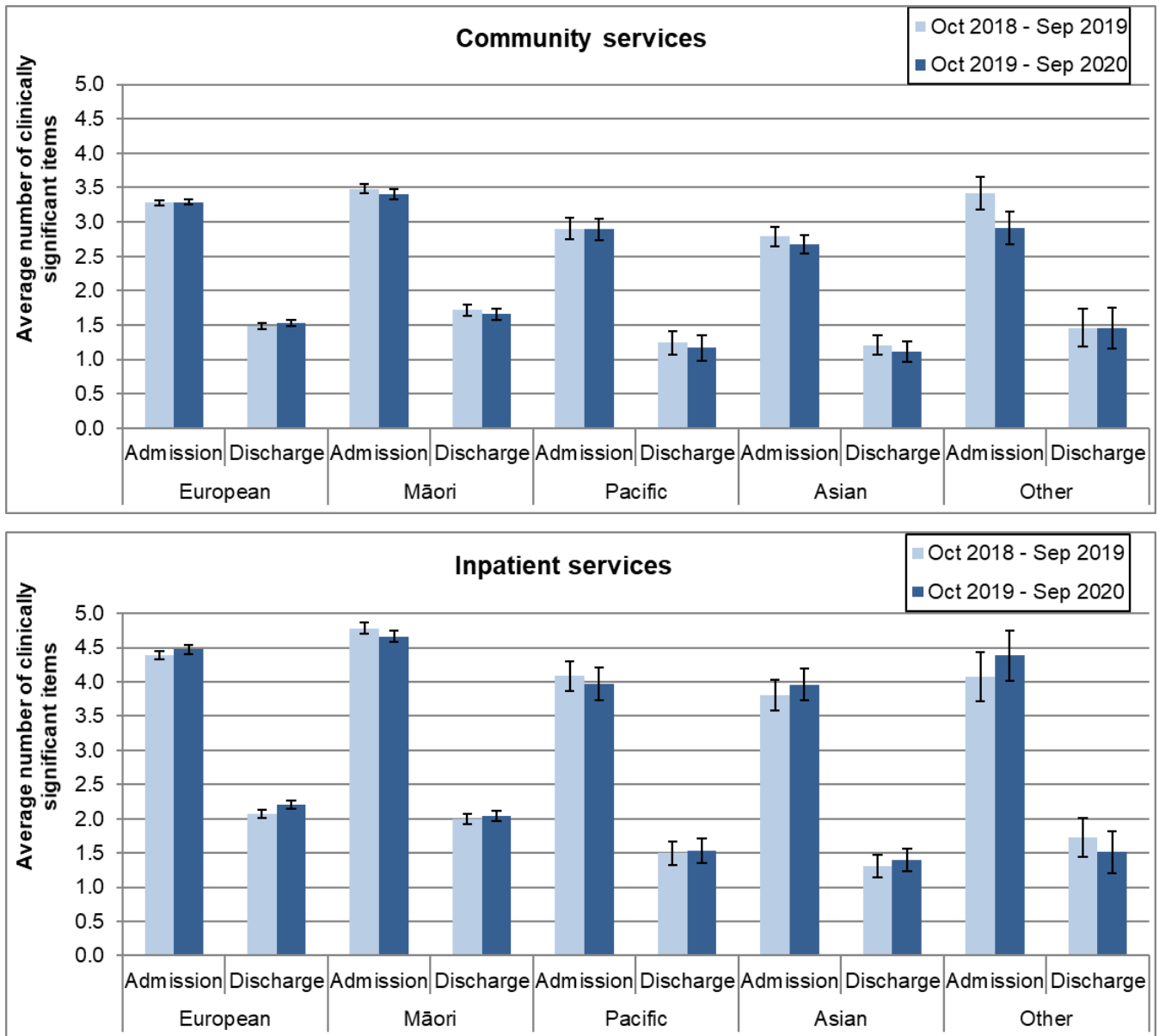
Target: A greater decrease from admission to discharge and smaller percentage in clinical range at discharge

Table 3: Average number of clinically significant HoNOS items by collection type and team: New Zealand, Oct 2019 - Sep 2020

Team type	Assessment only			Admission			Review			Discharge		
	N	Mean	CI	N	Mean	CI	N	Mean	CI	N	Mean	CI
Community services												
Alcohol and drug team	273	3.5	3.2-3.8	480	3.2	3.0-3.4	601	2.7	2.5-2.8	240	1.5	1.3-1.7
Child and youth team	37	3.4	2.7-4.2	61	3.9	3.2-4.5	186	2.5	2.2-2.8	78	2.2	1.7-2.7
Co-existing problem team							36	2.4	1.8-3.0			
Community team	10,820	3.7	3.7-3.8	10,870	3.3	3.3-3.4	35,012	2.4	2.4-2.4	6,161	1.6	1.6-1.7
Early intervention team				352	3.4	3.1-3.6	1,262	2.5	2.4-2.6	135	1.3	1.0-1.6
Eating disorders team	32	3.2	2.4-4.0	361	3.3	3.1-3.5	272	2.6	2.4-2.8	192	1.6	1.4-1.9
Forensic team	42	2.5	1.9-3.0	31	2.7	2.0-3.4	98	1.7	1.4-2.1	69	0.7	0.4-0.9
Kaupapa Māori team	325	3.7	3.5-4.0	514	3.1	2.9-3.3	3,055	2.5	2.5-2.6	230	1.6	1.4-1.9
Maternal mental health team	148	2.1	1.9-2.4	1,017	2.6	2.5-2.7	1,184	2.2	2.1-2.4	884	0.9	0.8-1.0
Needs assessment and service coordination team							107	2.5	2.1-2.9			
Older people team	21	3.0	2.2-3.8	72	3.6	3.1-4.2	122	3.0	2.6-3.4	42	2.4	1.9-2.8
Pacific people team				160	2.0	1.7-2.3	1,267	1.1	1.1-1.2	79	0.5	0.3-0.7
Specialty team	158	5.1	4.8-5.5	63	3.7	3.2-4.1						
Total	11,887	3.7	3.7-3.7	14,011	3.3	3.2-3.3	43,238	2.4	2.4-2.4	8,127	1.5	1.5-1.6
Inpatient services												
Alcohol and drug team				228	2.6	2.4-2.8				213	2.1	1.9-2.3
Forensic team				22	3.9	2.4-5.3	56	4.9	4.2-5.6	25	1.6	0.6-2.6
Inpatient team				8,879	4.6	4.5-4.6	1,106	3.1	3.0-3.3	8,209	2.1	2.0-2.1
Maternal mental health team				96	3.1	2.8-3.5				77	2.3	1.8-2.8
Older people team										23	3.3	2.2-4.4
Specialty team				24	4.8	4.3-5.3				44	3.2	2.7-3.6
Total				9,280	4.5	4.4-4.5	1,183	3.2	3.0-3.3	8,608	2.1	2.0-2.1

Notes: N = number of collections in period. Average = average number of HoNOS items in the clinically significant range (ie scoring 2, 3, or 4). CI = confidence interval for average score. Community discharge does not include discharge to an inpatient unit. **Interpretation:** If confidence intervals for two scores do not overlap, then the scores have a statistically significant difference. It is important to note that statistical significance may not indicate a clinically significant difference

Graph 4: Average number of clinically significant HoNOS items at admission and discharge by ethnic group: New Zealand, Oct 2018 - Sep 2019 and Oct 2019 - Sep 2020

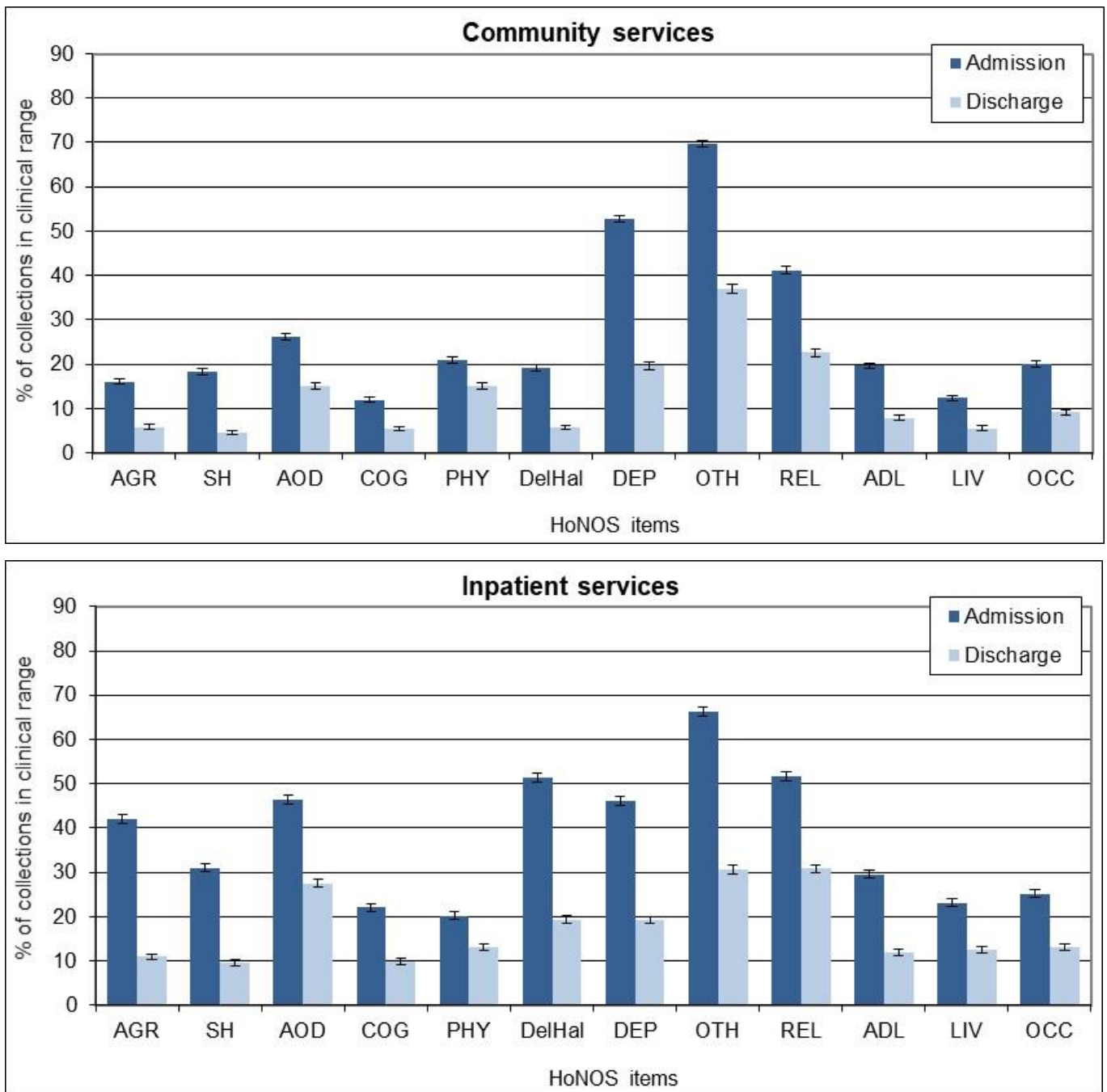


Notes: Average number of HoNOS items in the clinical range (2, 3 or 4). Community discharge does not include discharge to an inpatient unit.

Interpretation: Points are significantly different if error bars don't overlap. Decrease between admission and discharge is an indication of the outcomes achieved by the service and service user. A greater decrease between admission and discharge indicates a better outcome. A lower admission score could be indication of service users seeking out and being engaged by services at a lower level of acuity.

Target: A greater decrease from admission to discharge and smaller percentage in clinical range at discharge.

Graph 5a: Percentage of collections in clinical range on each HoNOS item (admission and discharge collections): New Zealand, Oct 2019 - Sep 2020



Notes: Percentage of service users in the clinical range (2, 3 or 4) for each HoNOS item. Community discharge does not include discharge to an inpatient unit.

Interpretation: The longer the bar, the more prevalent the difficulty measured by the item is amongst service users. A greater decrease in the length of the bar from admission to discharge suggests a better outcome for the difficulty measured by the item. Items that show medium to high frequency and less change may suggest possible targets for service improvement.

Target: A greater decrease from admission to discharge and smaller percentage in clinical range at discharge.

Table 5a: Percentage of collections in clinical range on each HoNOS item (admission and discharge collections) by team: New Zealand Oct 2019 - Sep 2020

Community services

First 6 HoNOS items														
Team type	N		AGR		SH		AOD		COG		PHY		DelHal	
	Adm	Disch	Adm	Disch	Adm	Disch	Adm	Disch	Adm	Disch	Adm	Disch	Adm	Disch
Alcohol and drug team	480	240	12%	8%	12%	2%	83%	46%	7%	3%	24%	10%	3%	1%
Child and youth team	61	78	23%	9%	31%	14%	25%	15%	15%	8%	18%	17%	18%	6%
Community team	10,857	6,153	17%	6%	21%	5%	26%	16%	12%	6%	21%	17%	20%	6%
Early intervention team	352	135	16%	5%	9%	1%	30%	20%	25%	7%	7%	5%	56%	10%
Eating disorders team	361	192	5%	3%	11%	5%	9%	6%	9%	2%	39%	17%	9%	4%
Forensic team	31	69	13%	1%	16%	0%	35%	4%	3%	0%	3%	7%	23%	1%
Kaupapa Māori team	514	230	14%	9%	10%	3%	30%	18%	13%	7%	18%	11%	26%	11%
Maternal mental health team	1,017	884	11%	3%	8%	1%	4%	2%	5%	1%	20%	7%	2%	0%
Older people team	72	42	28%	10%	4%	0%	4%	0%	69%	67%	43%	52%	26%	5%
Pacific people team	160	79	7%	0%	6%	0%	17%	4%	4%	5%	17%	11%	21%	3%
Specialty team	63		11%		17%		8%		11%		56%		6%	
Total	13,994	8,119	16%	6%	18%	4%	26%	15%	12%	5%	21%	15%	19%	6%

Second 6 HoNOS items												
Team type	DEP		OTH		REL		ADL		LIV		OCC	
	Adm	Disch	Adm	Disch	Adm	Disch	Adm	Disch	Adm	Disch	Adm	Disch
Alcohol and drug team	40%	12%	50%	26%	44%	22%	13%	6%	13%	8%	23%	8%
Child and youth team	59%	31%	80%	57%	49%	31%	34%	15%	15%	8%	21%	6%
Community team	53%	21%	70%	38%	42%	24%	20%	8%	12%	6%	21%	10%
Early intervention team	32%	9%	57%	31%	43%	19%	29%	10%	12%	1%	21%	10%
Eating disorders team	61%	32%	99%	63%	31%	20%	31%	6%	8%	4%	15%	4%
Forensic team	16%	1%	32%	3%	29%	1%	0%	0%	48%	25%	52%	22%
Kaupapa Māori team	43%	21%	58%	30%	40%	28%	18%	8%	19%	7%	21%	10%
Maternal mental health team	70%	16%	84%	36%	31%	18%	13%	4%	8%	4%	9%	2%
Older people team	29%	10%	42%	10%	35%	26%	55%	52%	11%	2%	20%	5%
Pacific people team	26%	3%	46%	11%	32%	6%	13%	5%	7%	4%	5%	0%
Specialty team	59%		95%		39%		37%		11%		16%	
Total	53%	20%	70%	37%	41%	23%	20%	8%	12%	6%	20%	9%

Inpatient services

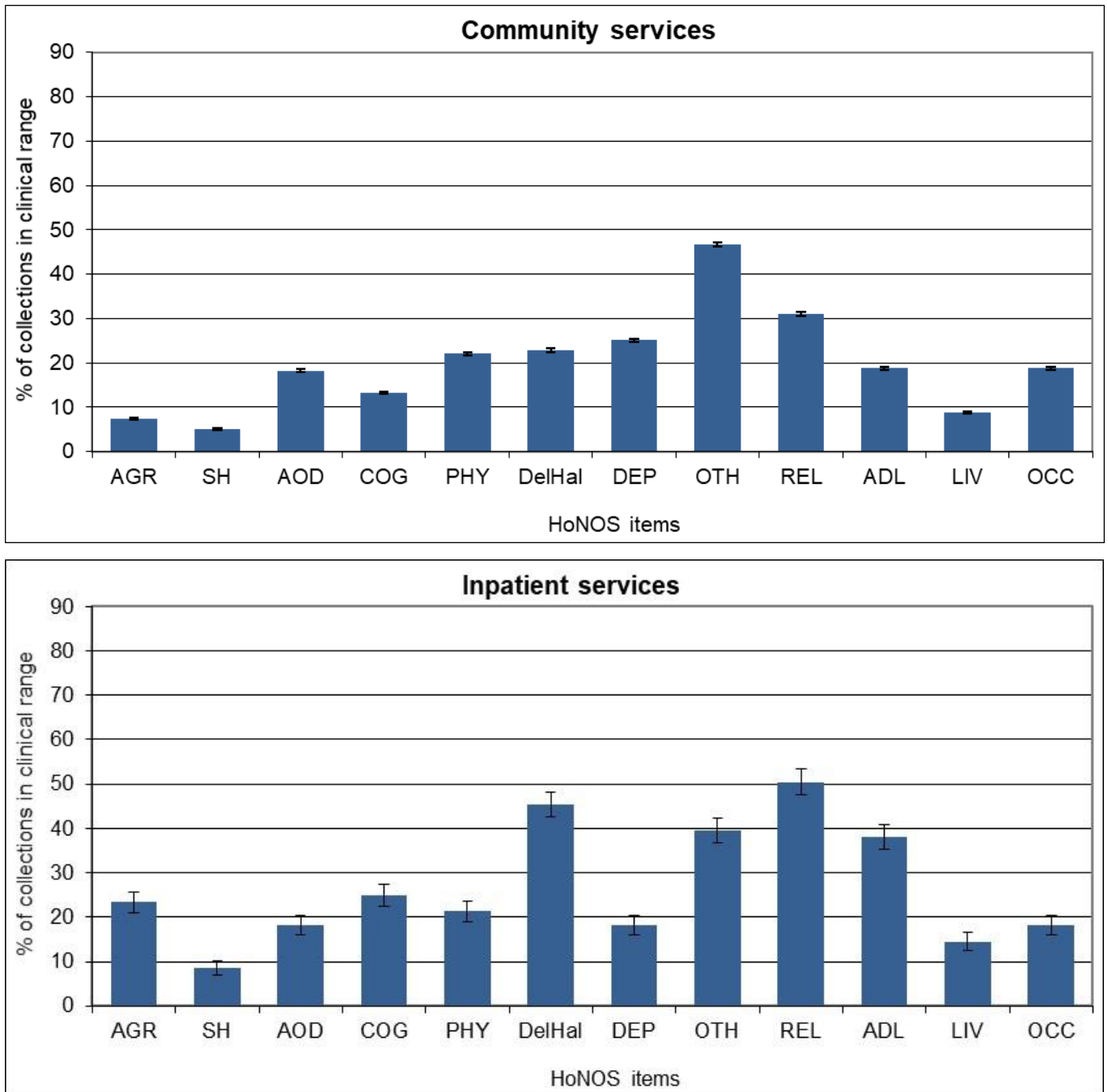
First 6 HoNOS items														
Team type	N		AGR		SH		AOD		COG		PHY		DelHal	
	Adm	Disch	Adm	Disch	Adm	Disch	Adm	Disch	Adm	Disch	Adm	Disch	Adm	Disch
Alcohol and drug team	228	213	7%	10%	1%	4%	100%	100%	8%	9%	36%	30%	1%	2%
Forensic team	22	25	45%	16%	14%	8%	33%	8%	41%	8%	5%	16%	50%	20%
Inpatient team	8,865	8,209	43%	11%	32%	9%	45%	26%	23%	10%	20%	12%	53%	20%
Maternal mental health team	96	77	18%	14%	28%	19%	10%	6%	9%	8%	17%	13%	22%	12%
Older people team		23		13%		13%		4%		61%		48%		17%
Specialty team	24	44	25%	11%	75%	39%	29%	14%	4%	0%	29%	14%	4%	2%
Total	9,266	8,608	42%	11%	31%	10%	46%	28%	22%	10%	20%	13%	51%	19%
Second 6 HoNOS items														
Team type	DEP		OTH		REL		ADL		LIV		OCC			
	Adm	Disch	Adm	Disch	Adm	Disch	Adm	Disch	Adm	Disch	Adm	Disch	Adm	Disch
Alcohol and drug team	52%	26%	26%	18%	13%	7%	6%	2%	14%	3%	17%	2%		
Forensic team	27%	8%	55%	20%	55%	20%	18%	12%	16%	4%	35%	17%		
Inpatient team	46%	19%	67%	30%	53%	31%	30%	12%	23%	13%	25%	13%		
Maternal mental health team	69%	40%	71%	52%	34%	36%	25%	16%	11%	11%	4%	7%		
Older people team		17%		27%		43%		52%		21%		28%		
Specialty team	58%	39%	92%	95%	79%	64%	21%	14%	42%	16%	21%	9%		
Total	46%	19%	66%	31%	52%	31%	30%	12%	23%	12%	25%	13%		

Notes: Percentage of service users in the clinical range (2, 3 or 4) for each HoNOS item. Community discharge does not include discharges to an inpatient unit.

Interpretation: The higher the percentage, the more prevalent the difficulty measured by the item is amongst service users. A greater decrease between admission and discharge suggests a better outcome for the difficulty measured by the item. Items that show medium to high frequency and less change may suggest possible targets for service improvement.

Target: A greater decrease from admission to discharge and smaller percentage in clinical range at discharge.

Graph 5b: Percentage of collections in clinical range on each HoNOS item (review collections): New Zealand, Oct 2019 - Sep 2020



Notes: Percentage of service users in the clinical range (2, 3 or 4) for each HoNOS item on review collections. Due to most admission being less than 91 days, the data set for review collections in inpatient settings is relatively small.

Interpretation: The longer the bar, the more prevalent the difficulty measured by the item is amongst service users.

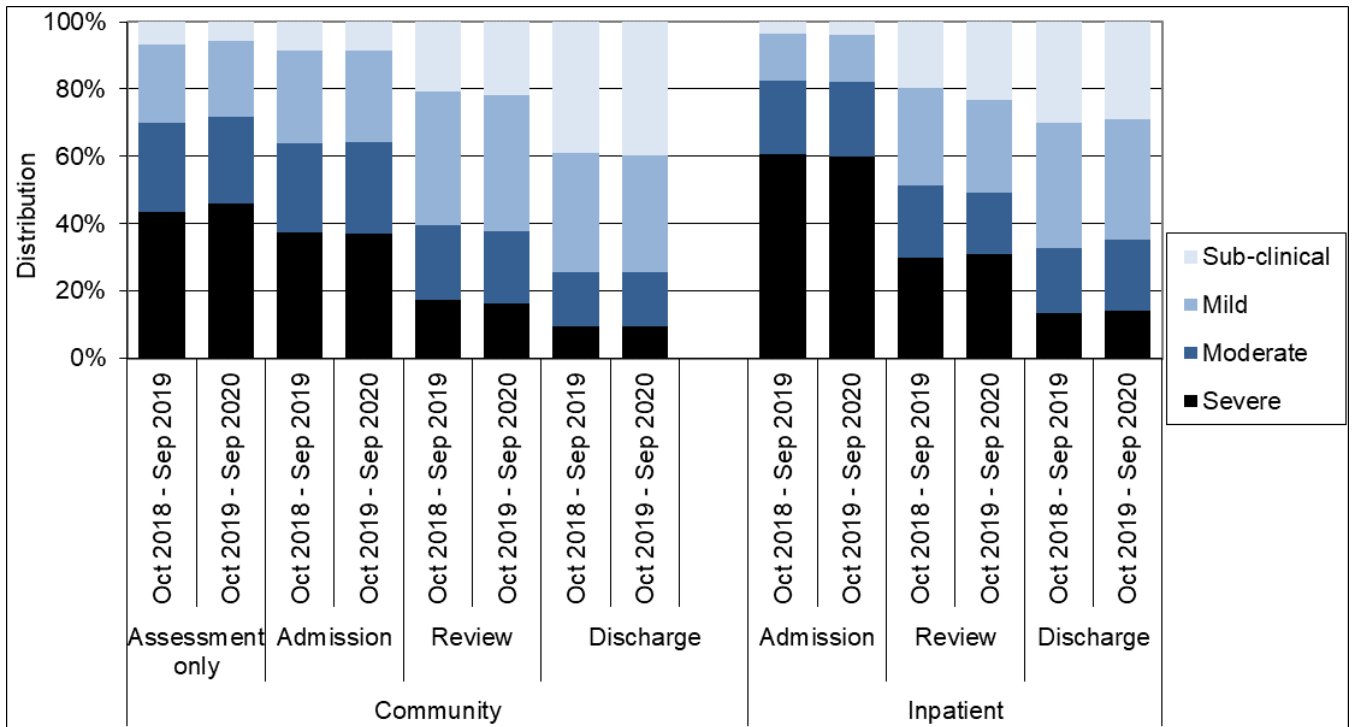
Table 5b: Percentage of collections in clinical range on each HoNOS item (review collections) by team: New Zealand, Oct 2019 - Sep 2020

Team type	N	AGR	SH	AOD	COG	PHY	DeIHaI	DEP	OTH	REL	ADL	LIV	OCC
Community services													
Alcohol and drug team	601	10%	6%	71%	7%	33%	2%	29%	44%	28%	9%	9%	18%
Child and youth team	186	16%	15%	14%	10%	18%	15%	37%	55%	34%	19%	4%	13%
Co-existing problem team	36	11%	8%	29%	3%	22%	14%	28%	50%	42%	8%	11%	17%
Community team	34,980	7%	5%	17%	14%	23%	24%	25%	47%	32%	19%	9%	19%
Early intervention team	1,261	7%	6%	28%	18%	8%	31%	22%	50%	34%	25%	8%	17%
Eating disorders team	272	4%	10%	5%	5%	31%	6%	49%	94%	24%	20%	6%	10%
Forensic team	98	5%	3%	13%	1%	17%	13%	4%	30%	18%	9%	18%	41%
Kaupapa Māori team	3,052	8%	4%	26%	15%	24%	25%	22%	45%	29%	19%	14%	23%
Maternal mental health team	1,184	10%	3%	3%	4%	17%	1%	52%	75%	32%	12%	7%	10%
Needs assessment and service coordination team	107	7%	3%	17%	27%	21%	31%	10%	31%	32%	27%	12%	28%
Older people team	122	20%	2%	7%	52%	46%	23%	19%	33%	31%	52%	1%	16%
Pacific people team	1,267	3%	1%	10%	6%	13%	19%	11%	18%	14%	8%	4%	7%
Total	43,201	7%	5%	18%	13%	22%	23%	25%	47%	31%	19%	9%	19%
Inpatient services													
Forensic team	56	36%	14%	20%	54%	43%	57%	23%	59%	66%	71%	15%	32%
Inpatient team	1,106	23%	8%	18%	24%	21%	45%	18%	39%	51%	37%	15%	18%
Total	1,183	23%	9%	18%	25%	21%	45%	18%	39%	50%	38%	15%	18%

Notes: Percentage of service users in the clinical range (2, 3 or 4) for each HoNOS item on review collections. Due to most admission being less than 91 days, the data set for review collections in inpatient settings is relatively small.

Interpretation: The higher the percentage, the more prevalent the difficulty measured by the item is amongst service users.

Graph 6: Index of Severity ratings for HoNOS by collection type: New Zealand, Oct 2018 - Sep 2019 and Oct 2019 - Sep 2020



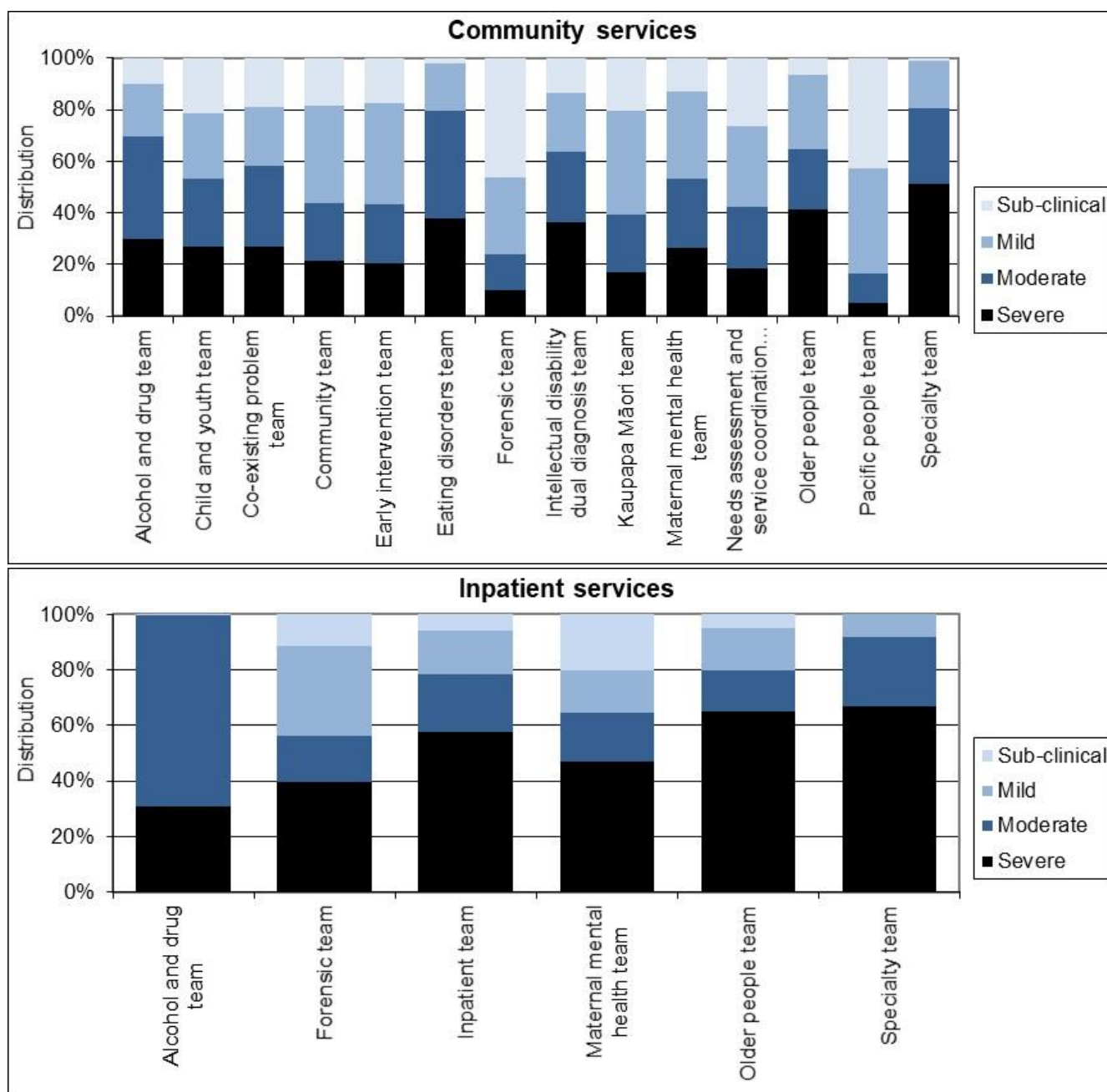
Notes: Community discharge does not include discharge to an inpatient unit. Index of Severity: Sub clinical = all items <2, mild = at least one item >1 and all items <3, moderate = at least one item >=3, severe = at least 2 items >=3 using first 10 items.

Interpretation: Darker bars indicate higher overall level of severity. More positive outcome is shown by larger decrease in darker sections of bar between admission and discharge.

2. Other measures of service activity

This section presents other information related to data collected in PRIMHD that may be helpful for understanding how teams are operating. This includes information relevant to caseload intensity and team activity.

Graph 7: Index of Severity for HoNOS (admission and review collections) by team, New Zealand, Oct 2019 - Sep 2020



Notes: Only data related to collection at admission and review is included so that results reflect the severity of service users during their engagement with the service. Index of Severity: Sub clinical = all items <2, mild = at least one item >1 and all items <3, moderate = at least one item >=3, severe = at least 2 items >=3 using first 10 items.

Interpretation: This graph gives an impression of the overall severity of the caseload for different teams at admission. The longer the darker bar, the higher the overall severity of the team's caseload.

Table 7: Index of Severity for HoNOS by collection type and team: New Zealand, Oct 2019 - Sep 2020

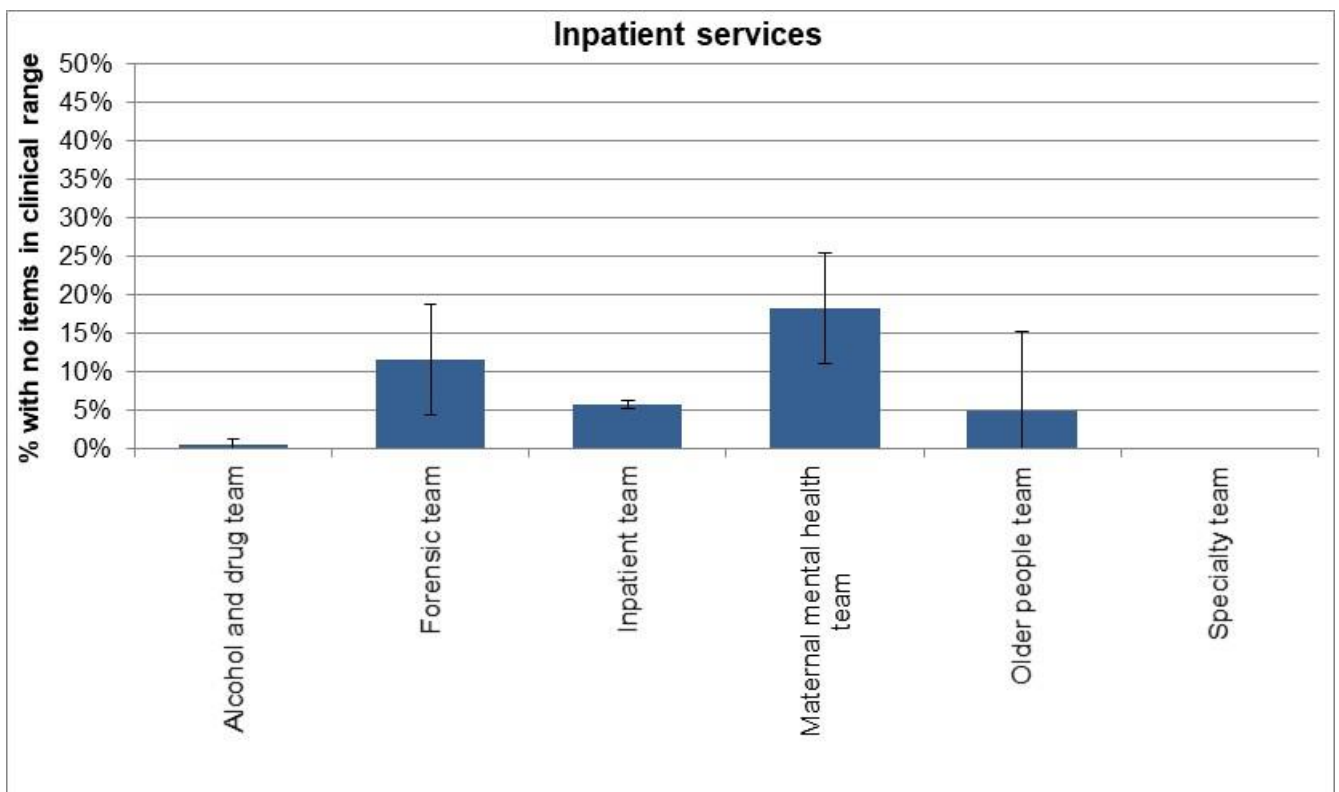
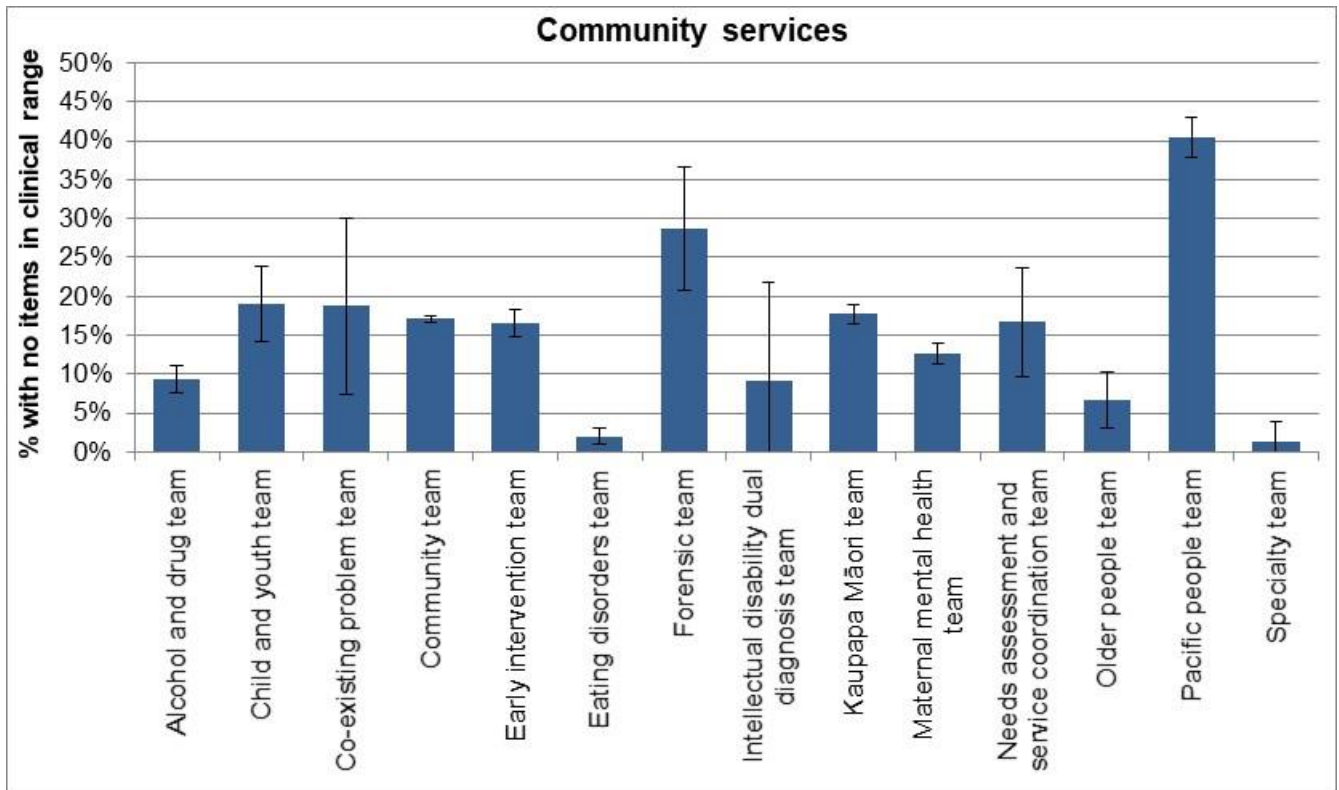
Team type	Assessment only					Admission					Review					Discharge				
	Sub	Mild	Mod	Sev	N	Sub	Mild	Mod	Sev	N	Sub	Mild	Mod	Sev	N	Sub	Mild	Mod	Sev	N
Community services																				
Alcohol and drug team	12%	17%	26%	45%	273	7%	14%	44%	35%	480	13%	25%	37%	26%	601	38%	31%	20%	12%	240
Child and youth team	3%	19%	35%	43%	37	10%	23%	26%	41%	61	25%	26%	26%	23%	186	24%	41%	19%	15%	78
Co-existing problem team											22%	28%	33%	17%	36					
Community team	5%	22%	26%	46%	10,820	9%	27%	26%	38%	10,870	21%	41%	22%	16%	35,012	37%	36%	17%	10%	6,161
Early intervention team						11%	35%	24%	30%	352	20%	40%	22%	18%	1,262	49%	31%	13%	7%	135
Eating disorders team	9%	16%	41%	34%	32	0%	9%	44%	46%	361	4%	30%	39%	27%	272	33%	25%	27%	16%	192
Forensic team	50%	21%	26%	2%	42	32%	19%	32%	16%	31	51%	33%	8%	8%	98	86%	12%	3%	0%	69
Kaupapa Māori team	9%	27%	24%	40%	325	12%	38%	23%	27%	514	22%	41%	22%	15%	3,055	40%	38%	15%	8%	230
Maternal mental health team	20%	43%	18%	20%	148	9%	27%	29%	35%	1,017	16%	39%	25%	20%	1,184	54%	32%	9%	5%	884
Needs assessment and service coordination team											28%	34%	21%	17%	107					
Older people team	10%	19%	19%	52%	21	4%	25%	24%	47%	72	8%	31%	23%	38%	122	12%	21%	33%	33%	42
Pacific people team						23%	47%	16%	14%	160	45%	40%	11%	4%	1,267	70%	27%	4%	0%	79
Specialty team	1%	6%	11%	81%	158	2%	17%	24%	57%	63										
Total	6%	22%	26%	46%	11,887	9%	27%	27%	37%	14,011	22%	40%	22%	16%	43,238	40%	35%	16%	10%	8,127

Team type	Assessment only					Admission					Review					Discharge				
	Sub	Mild	Mod	Sev	N	Sub	Mild	Mod	Sev	N	Sub	Mild	Mod	Sev	N	Sub	Mild	Mod	Sev	N
Inpatient services																				
Alcohol and drug team						0%	0%	69%	31%	228						0%	0%	75%	24%	213
Forensic team						18%	27%	14%	41%	22	9%	34%	18%	39%	56	64%	12%	12%	12%	25
Inpatient team						4%	14%	21%	61%	8,879	23%	27%	19%	31%	1,106	30%	37%	20%	13%	8,209
Maternal mental health team						11%	13%	21%	55%	96						29%	25%	21%	26%	77
Older people team																13%	17%	9%	61%	23
Specialty team						0%	8%	25%	67%	24						2%	34%	30%	34%	44
Total						4%	14%	22%	60%	9,280	23%	27%	18%	31%	1,183	29%	36%	21%	14%	8,608

Notes: Sub = sub clinical, Mild = mild, Mod = moderate, Sev = severe on Index of Severity. Only admission collection data is included so that results reflect the severity of service users during their engagement with the service. Index of Severity: Sub clinical = all items <2, mild = at least one item >1 and all items <3, moderate = at least one item >=3, severe = at least 2 items >=3 using first 10 items. Community discharge does not include discharge to an inpatient unit.

Interpretation: Larger percentages in the columns to the right for each type of collection, the higher the overall severity of the team's caseload.

Graph 8: Collections with no HoNOS items in clinical range: New Zealand, Oct 2019 - Sep 2020



Notes: Includes admission and review collections. Shows percentage of service users with all HoNOS items less than two, ie no HoNOS items in the clinical range.

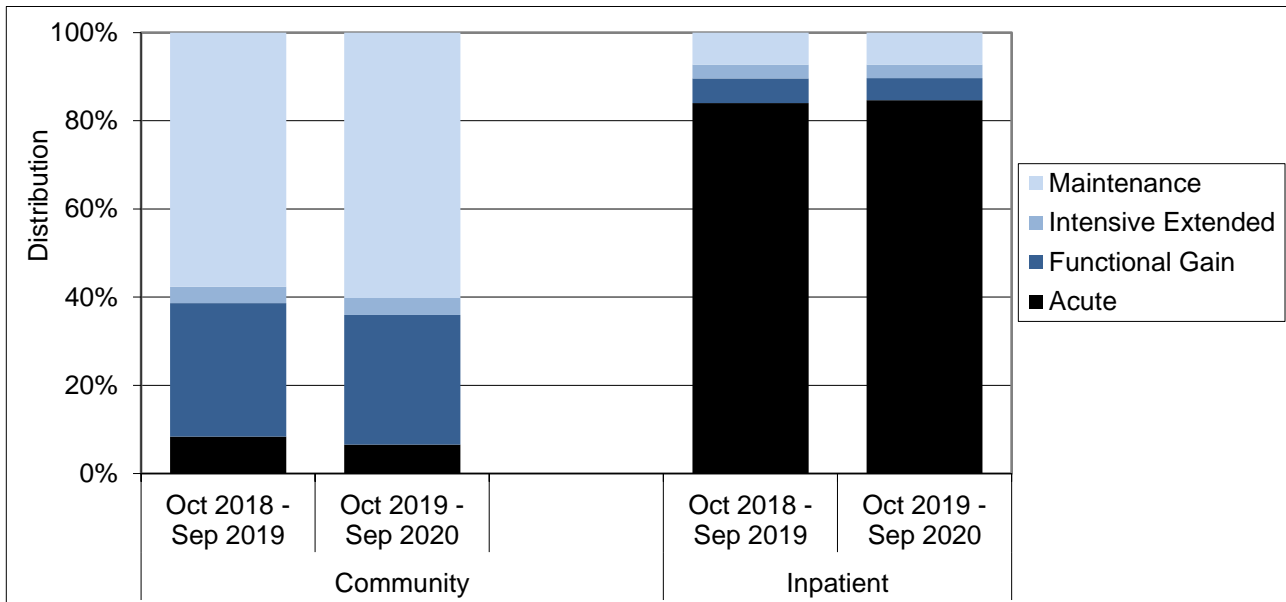
Interpretation: There are a variety of reasons that may make it appropriate for service users to remain in the service even though they show no HoNOS items in the clinical range. However, teams showing a larger or substantial percentage of service users with no HoNOS items in the clinical range could benefit from reviewing these cases to ensure that the service remains appropriate for this service user.

Table 8: Collections with no HoNOS items in clinical range: New Zealand, Oct 2019 - Sep 2020

Team type	Number of collections with no items in clinical range	Percentage with no items in clinical range
Community services		
Alcohol and drug team	102	9%
Child and youth team	47	19%
Co-existing problem team	9	19%
Community team	7,843	17%
Early intervention team	267	17%
Eating disorders team	13	2%
Forensic team	37	29%
Intellectual disability dual diagnosis team	2	9%
Kaupapa Māori team	632	18%
Maternal mental health team	279	13%
Needs assessment and service coordination team	19	17%
Older people team	13	7%
Pacific people team	576	40%
Specialty team	1	1%
Total	9,840	17%
Inpatient services		
Alcohol and drug team	1	0%
Forensic team	9	12%
Inpatient team	571	6%
Maternal mental health team	21	18%
Older people team	1	5%
Specialty team	0	0%
Total	603	6%

Notes: For further information see notes for graph 8.

Graph 9: Focus of care categories: New Zealand, Oct 2018 - Sep 2019 and Oct 2019 - Sep 2020



Notes: Data from review and discharge collections.

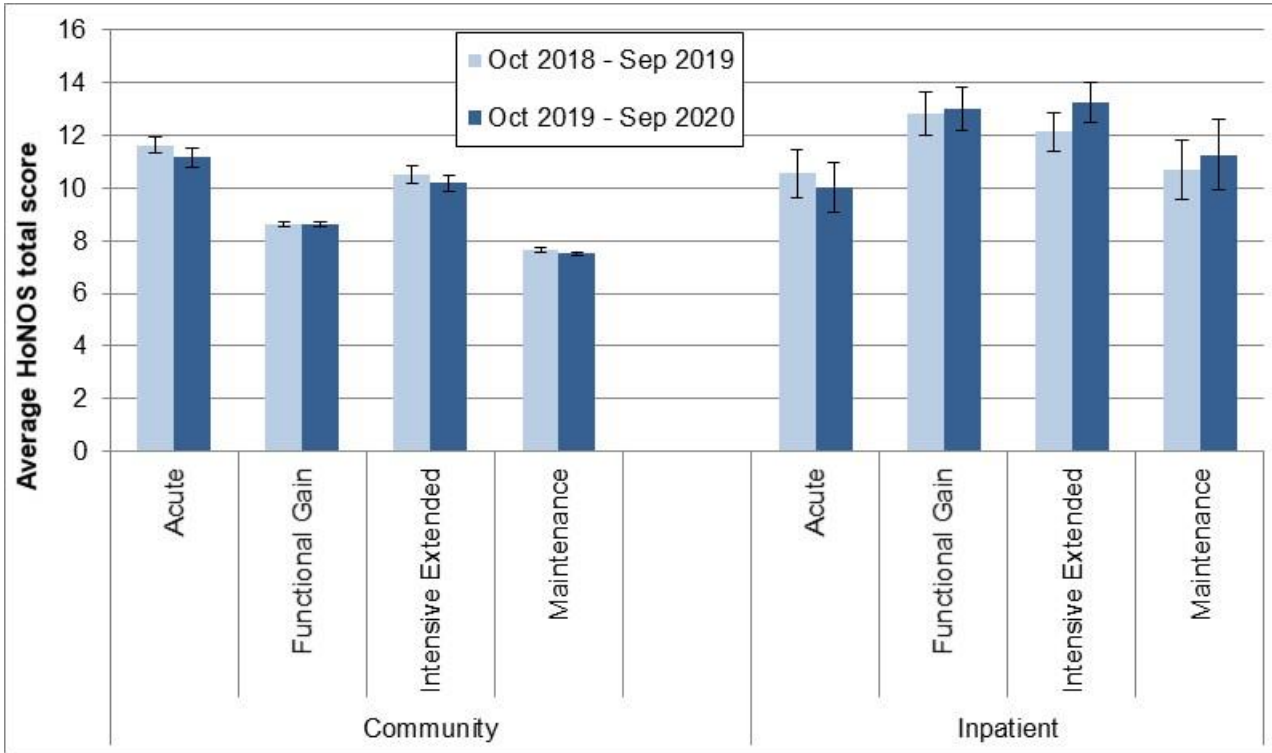
Interpretation: Darker bars indicate more intensive involvement in care, so a longer, darker bar in general suggests more intensive working. A longer functional gain bar and shorter maintenance bar potentially suggests more recovery focused ways of working.

Table 9: Focus of care categories by team: New Zealand, Oct 2018 - Sep 2019 and Oct 2019 - Sep 2020

Team type	Acute		Functional gain		Intensive extended		Maintenance		Number of collections	
	Last	This	Last	This	Last	This	Last	This	Last	This
Community services										
Alcohol and drug team	6%	5%	43%	49%	1%	1%	51%	46%	995	844
Child and youth team	4%	3%	40%	33%	7%	9%	49%	55%	281	238
Co-existing problem team	10%	10%	14%	30%	2%	3%	74%	58%	42	40
Community team	9%	7%	29%	28%	4%	4%	58%	61%	41,222	38,516
Early intervention team	6%	6%	48%	53%	3%	3%	43%	38%	1,405	1,321
Eating disorders team	7%	8%	66%	58%	11%	8%	17%	27%	538	515
Forensic team	4%	3%	5%	1%	2%	6%	89%	90%	149	100
Intellectual disability dual diagnosis team	0%		0%		0%		100%		22	
Kaupapa Māori team	9%	4%	16%	15%	3%	3%	72%	78%	3,533	3,264
Maternal mental health team	8%	7%	55%	61%	2%	2%	35%	29%	2,233	1,965
Needs assessment and service coordination team	6%	2%	21%	13%	5%	10%	69%	75%	131	107
Older people team	9%	5%	12%	5%	4%	1%	75%	89%	108	100
Pacific people team	3%	2%	12%	10%	0%	0%	84%	87%	1,078	1,289
Specialty team	20%	24%	21%	33%	9%	5%	51%	38%	81	21
Total	8%	7%	30%	29%	4%	4%	58%	60%	51,829	48,346
Inpatient services										
Alcohol and drug team	100%	100%	0%	0%	0%	0%	0%	0%	239	202
Forensic team	17%	16%	10%	5%	57%	57%	17%	22%	90	77
Inpatient team	84%	85%	6%	5%	3%	3%	7%	7%	8,545	8,034
Maternal mental health team	92%	77%	1%	13%	0%	0%	7%	10%	76	92
Older people team	81%		0%		0%		19%		21	
Specialty team		100%		0%		0%		0%		31
Total	84%	85%	6%	5%	3%	3%	7%	7%	9,008	8,468

Notes: For further information see notes for Graph 9.

Graph 10: HoNOS total score (review collections) by focus of care: New Zealand, Oct 2019 - Sep 2020



Notes: This data is just for review collections.

Interpretation: Points are significantly different if error bars don't overlap. A general downward trend in scores from acute to maintenance focus of care might be expected.

Table 10: HoNOS total score (review collections) by focus of care by team: New Zealand, Oct 2019 - Sep 2020

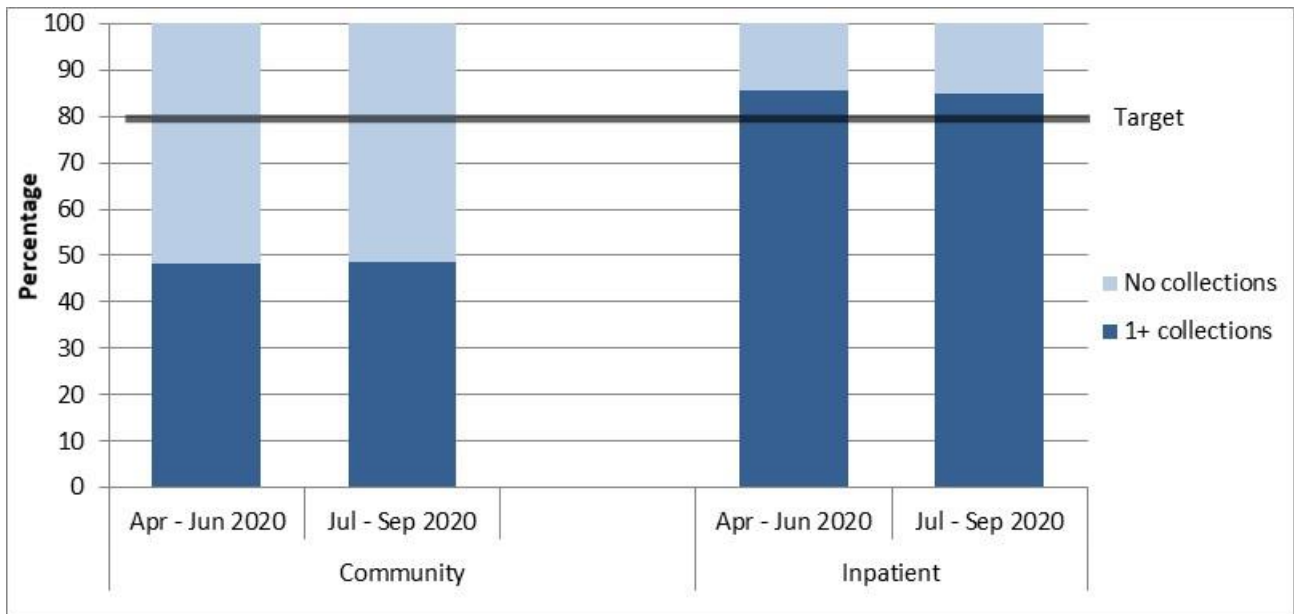
Team type	Acute			Functional Gain			Intensive Extended			Maintenance		
	N	Mean	CI	N	Mean	CI	N	Mean	CI	N	Mean	CI
Community services												
Alcohol and drug team	21	13.5	10.1-16.9	201	8.2	7.5-9.0				352	8.7	8.2-9.2
Child and youth team				52	7.3	5.9-8.7				96	8.5	7.2-9.8
Co-existing problem team										22	7.4	5.5-9.3
Community team	905	10.9	10.5-11.3	8,483	8.6	8.5-8.8	1,385	10.1	9.8-10.4	20,132	7.6	7.5-7.7
Early intervention team	44	14.5	11.8-17.1	587	8.5	8.1-9.0	37	14.2	11.8-16.7	415	7.0	6.4-7.6
Eating disorders team				147	8.4	7.5-9.3	26	10.9	8.7-13.1	75	7.4	6.4-8.4
Forensic team										85	6.1	5.0-7.2
Kaupapa Māori team	79	12.0	10.8-13.1	433	9.9	9.4-10.5	75	10.3	8.5-12.2	2,241	8.2	8.0-8.5
Maternal mental health team	54	8.9	7.5-10.3	726	7.9	7.6-8.3	24	7.6	6.0-9.2	305	5.4	4.9-5.8
Needs assessment and service coordination team										79	7.6	6.5-8.6
Older people team										67	10.9	9.5-12.3
Pacific people team				101	6.3	5.3-7.2				1,048	4.4	4.2-4.6
Total	1,136	11.2	10.8-11.5	10,760	8.6	8.5-8.7	1,580	10.2	9.9-10.5	24,940	7.5	7.5-7.6
Inpatient services												
Forensic team							43	15.0	13.7-16.2			
Inpatient team	281	10.1	9.2-11.1	177	13.1	12.3-14.0	156	12.8	11.9-13.7	125	11.7	10.3-13.1
Total	296	10.0	9.1-11.0	182	13.0	12.2-13.8	199	13.3	12.5-14.0	135	11.3	9.9-12.6

Notes: For further information see notes for Graph 10.

3. Collection completion and validity

This section presents information about the completeness and validity of the data on which the remainder of this report is based. It also shows the current targets for the variables presented.

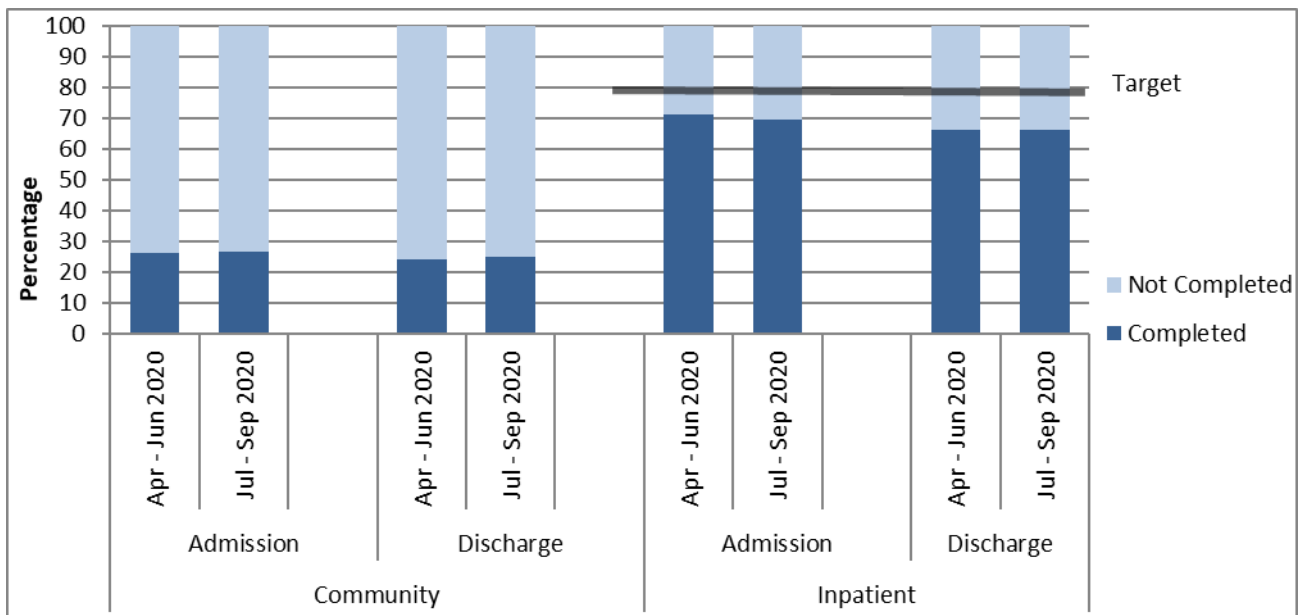
Graph 11: Percentage of service users with at least one collection during the period: New Zealand, Apr – Jun 2020 and Jul – Sep 2020 (18 to 64 years)



Interpretation: The longer the dark part of the bar, the more completely the data set includes all service users, and the more meaningful and representative the graphs, tables, and analyses using these data will be. This data is approximate due to movement of service users between teams and similar variations; however, it does provide a reasonably accurate representation of completion of measures. Only data with valid collections is included.

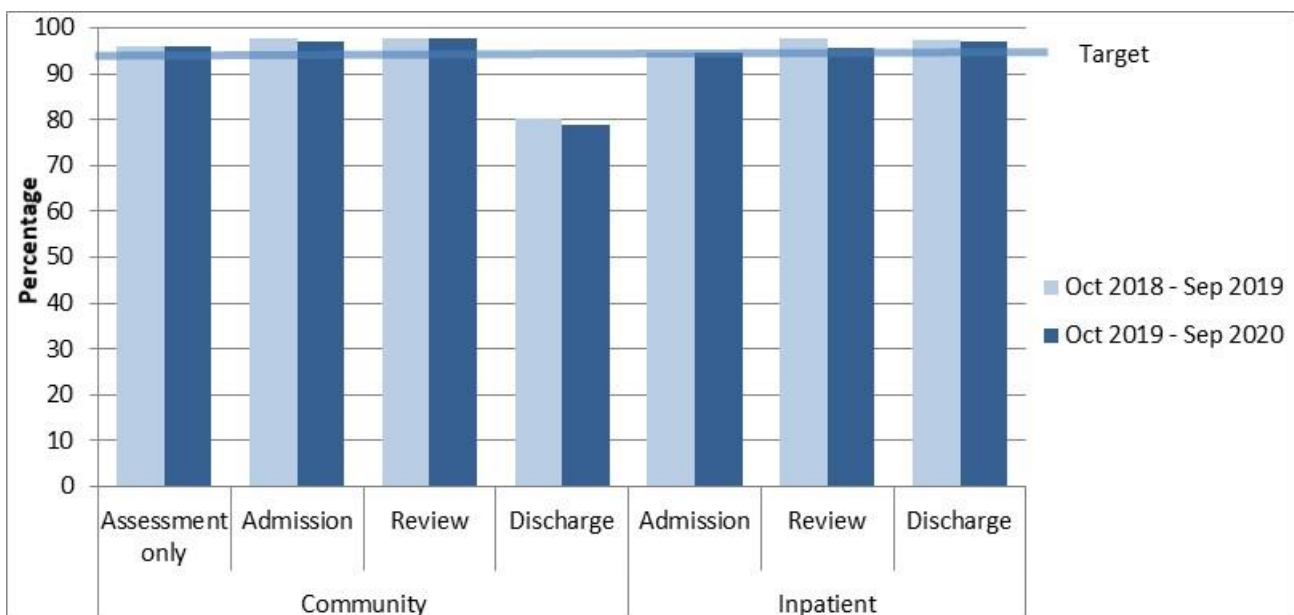
Target: To meet or exceed the target shown on the graph for the percentage of service users with at least one collection within the period.

Graph 12: Percentage of service users with admission and discharge collections completed: New Zealand, Apr – Jun 2020 and Jul – Sep 2020 (18 to 64 years)



Interpretation: The longer the dark bar, the larger the percentage of admission and discharge that had the relevant data collection type. Data is approximate due to movement of service users between teams and similar variations; however, it does provide a reasonably accurate representation of completion of measures. Only data with valid collections is included.

Graph 13: Percentage of valid collections, HoNOS: New Zealand, Oct 2018 - Sep 2019 and Oct 2019 - Sep 2020



Notes: Valid = Two or fewer of the 12 items scored as unknown or missing. Discharge excludes collection types for lost to care, discharge dead and brief episode of care. Collection in drug and alcohol teams is not required, therefore AOD data is excluded.

Interpretation: The longer the dark lines, the higher the percentage of valid scores.

Target: Aim for 95% valid collections.

Table 13: Invalid collections by team, by HoNOS item: New Zealand, Oct 2019 - Sep 2020

Team type	% Invalid			Number of invalid ratings by HoNOS item												Total number
	Adm	Rev	Dch	1	2	3	4	5	6	7	8	9	10	11	12	
Community services																
Child and youth team	2%	2%	13%	22	22	22	21	21	25	22	23	21	21	23	21	401
Community team	3%	2%	22%	3,695	3,846	4,529	3,942	3,855	3,928	4,009	4,029	4,088	4,014	4,132	4,397	70,377
Early intervention team	3%	2%	25%	134	145	155	142	136	142	141	164	147	141	142	144	2,099
Eating disorders team	2%	3%	12%	53	56	56	54	54	52	54	48	50	50	52	52	1,010
Forensic team	3%	1%	0%	3	3	11	4	4	4	3	3	5	4	3	6	252
Intellectual disability dual diagnosis team				0	0	0	0	0	0	0	0	0	0	0	0	25
Kaupapa Māori team	4%	3%	23%	234	241	275	239	238	246	249	264	250	259	250	258	4,662
Maternal mental health team	2%	2%	20%	334	342	367	341	337	334	332	344	337	336	339	345	3,777
Needs assessment and service coordination team		0%		0	0	0	0	0	0	0	0	0	0	0	0	129
Older people team	5%	0%	9%	8	10	11	10	8	14	11	18	10	10	7	12	286
Pacific people team	2%	1%	19%	55	59	61	55	59	56	56	62	60	85	75	89	1,690
Specialty team	5%			14	13	19	16	12	13	16	21	74	75	77	77	320
Total	3%	2%	21%	4,552	4,737	5,506	4,824	4,724	4,814	4,893	4,976	5,042	4,995	5,100	5,401	85,041
Inpatient services																
Eating disorders team				0	0	0	0	0	0	0	0	0	0	0	0	29
Forensic team	4%	2%	0%	0	0	4	1	0	0	1	2	0	0	6	5	105
Inpatient team	5%	4%	3%	293	371	711	501	391	428	510	675	659	562	919	1,089	18,766
Maternal mental health team	2%		3%	3	4	6	3	4	3	5	4	4	3	9	11	195
Older people team	22%		4%	0	1	2	2	0	1	4	7	3	0	15	16	52
Specialty team				0	0	0	0	0	0	0	0	0	0	0	0	67
Total	5%	4%	3%	296	376	723	507	395	432	520	689	666	565	949	1,121	19,215

Notes: Per cent (%) invalid collections = the percentage of collections that had three or more of the 12 items scored as unknown or missing. Number of invalid ratings by HoNOS item = for each of the HoNOS items, the number of collections for which that item was unknown or missing. Discharge excludes collection types for lost to care, deceased and brief episode of care. Collection in drug and alcohol teams is not required, therefore AOD data is excluded. **Interpretation:** The lower the per cent invalid, the higher the percentage of valid scores. The lower the number of invalid collections by HoNOS item, the more collections that have valid data on that HoNOS item. **Target:** Aim for 95% valid collections (5% invalid collections) or better. Aim for as few invalid items as possible, with all items having a similar validity rate.