



# PRIMHD summary report – HoNOS65+

Health of the Nation Outcomes Scales – adults 65+ report for New Zealand



[tepou.co.nz](http://tepou.co.nz)

This report summarises national Programme for the Integration of Mental Health Data (PRIMHD) data submitted by district health boards (DHB). In particular, it presents Health of the National Outcomes Scale for older adult (HoNOS65+) data from services where HoNOS65+ is the primary measure.

This report is organised into three major sections that provide information about:

- 1. Outcomes related information:** This provides indications about what changes have occurred for service users between entering and leaving the service. Outcome is assessed by comparing the group admitted and the group discharged from the service in the same time period. This should provide a reasonable indication of outcomes achieved unless the service user mix has changed significantly over the usual period for which service is delivered.
- 2. Service related information:** This provides information about the services, such as the overall severity of service users who use different services.
- 3. Collection completion and validity:** This details the completeness of the data set provided by your mental health services. This is important because it indicates how valid and reliable the data sets are likely to be. The less complete the data set, the less valid the information is likely to be.

In many cases the data is presented graphically for New Zealand, and then presented as a table for the individual team types (see team type classification factsheet).

The time period covered differs for the different data presented. See the title or the notes under the graphs or tables for information about the time period covered. Unless otherwise stated, the notes under the graphs also apply to the corresponding table.

For all graphs and tables, if there are less than twenty cases in the data set, then the information is not presented. This is because small samples frequently provide inaccurate and potentially misleading results. See the notes and user guide for other important information about the graphs and tables.

Where appropriate, the statistical **confidence interval** is presented. This is shown by error bars (small lines above and below the average) on the graphs, and a score range in some tables. As a rule of thumb, if the confidence intervals of two data points do not overlap, the two points can be considered to be significantly different. If the confidence intervals of the data points do overlap, we assume the points are not significantly different. It is important to note that statistical significance may not indicate a clinically significant difference.

**See the associated user guide for more information** about how to understand and use the data presented in this report.

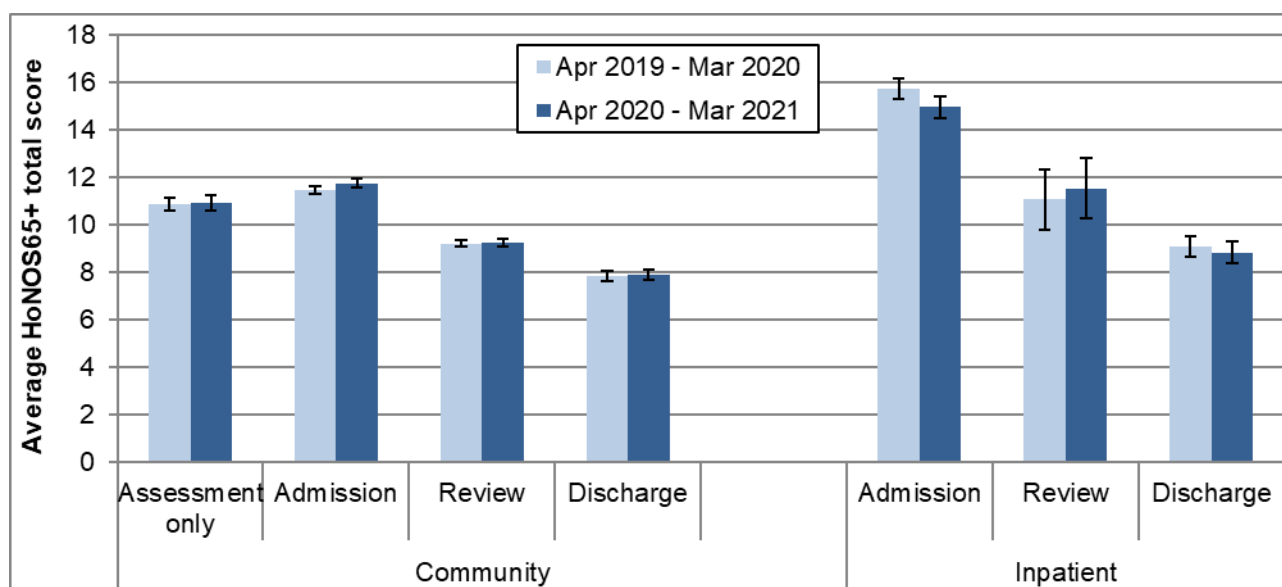
Data for graphs 11 and 12 was extracted 12 July 2021 from PRIMHD by the Ministry of Health and formatted by Te Pou. The data for graphs and tables 1 to 10 and 13 was extracted 23 June 2021 from PRIMHD by the Ministry of Health, then analysed and formatted by Te Pou.

*Please note: For this period a few DHBs have incomplete data which will affect New Zealand totals.*

# 1. Outcomes – changes in service user status

This section presents HoNOS65+ data indicating the status of service users at different stages of their contact with DHB mental health services. Graph and Table 1, and Graph 2 show results from HoNOS65+ total scores. Graphs and Tables 3 to 5b show results related to the percentage of HoNOS65+ items in the clinical range. Table 6 shows results from the Index of Severity derived from HoNOS65+ scores.

**Graph 1: Average HoNOS65+ total score (12 items) by collection type: New Zealand, Apr 2019 - Mar 2020 and Apr 2020 - Mar 2021**



**Notes:** Error bars indicate the confidence intervals around the data point. If error bars overlap, the data points are not significantly different. Community discharge does not include discharge to an inpatient unit.

**Interpretation:** Decrease between admission and discharge is an indication of the outcomes achieved by the service user and service. The greater the decrease between admission and discharge, and the lower the average HoNOS65+ score at discharge, the more positive the outcome.

**Target:** A greater decrease from admission to discharge and lower average rating at discharge.

**Table 1: Average HoNOS65+ total score (12 items), by collection type and team: New Zealand, Apr 2020 - Mar 2021**

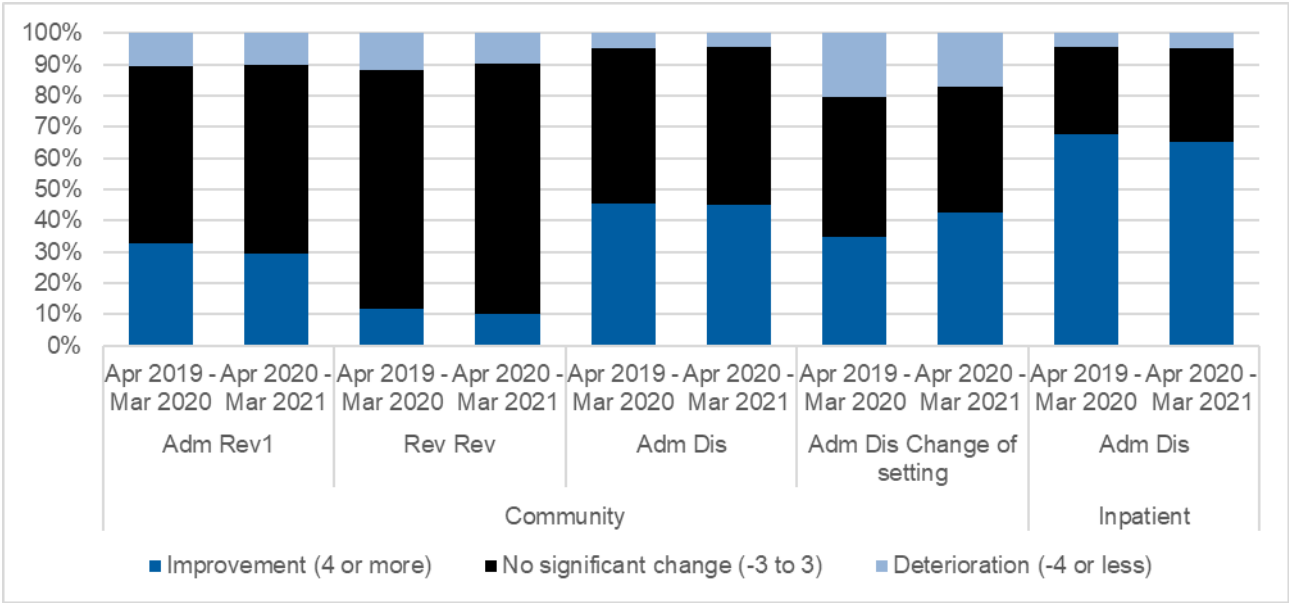
Team type	Assessment only			Admission			Review			Discharge		
	N	Mean	CI	N	Mean	CI	N	Mean	CI	N	Mean	CI
<b>Community services</b>												
Community team	384	10.2	9.7-10.7	283	11.7	11.0-12.4	1,560	8.8	8.5-9.0	234	7.3	6.6-8.0
Kaupapa Māori team							47	10.7	9.1-12.2			
Older people team	697	10.3	9.9-10.8	2,503	11.1	10.9-11.3	3,573	8.8	8.7-9.0	2,033	7.3	7.1-7.5
Specialty team	141	15.5	14.5-16.6	370	16.0	15.4-16.6	436	14.0	13.6-14.5	319	12.2	11.6-12.8
<b>Total</b>	<b>1,232</b>	<b>10.9</b>	<b>10.6-11.2</b>	<b>3,179</b>	<b>11.7</b>	<b>11.5-11.9</b>	<b>5,664</b>	<b>9.2</b>	<b>9.1-9.4</b>	<b>2,605</b>	<b>7.9</b>	<b>7.7-8.1</b>
<b>Inpatient services</b>												
Inpatient team				306	14.7	13.9-15.5	45	13.0	10.5-15.5	228	9.2	8.3-10.1
Older people team				528	15.1	14.5-15.7	80	10.9	9.3-12.4	444	8.6	8.1-9.1
<b>Total</b>				<b>836</b>	<b>15.0</b>	<b>14.5-15.4</b>	<b>132</b>	<b>11.5</b>	<b>10.3-12.8</b>	<b>675</b>	<b>8.8</b>	<b>8.3-9.3</b>

**Notes:** N = number of collections in period. Average = average HoNOS65+ (12 item) score, CI = confidence interval for average score. Community discharge does not include discharge to an inpatient unit.

**Interpretation:** If confidence intervals for two scores do not overlap, then the scores have a statistically significant difference. It is important to note that statistical significance may not indicate a clinically significant difference.



**Graph 2: Difference in HoNOS65+ total score (12 items) for matched pairs by pair type and setting, New Zealand, Apr 2019 - Mar 2020 and Apr 2020 - Mar 2021**



**Notes:** Shows the difference of the matched pair between the start and end HoNOS65+ total score. Community admission to discharge includes discharge no further care and discharge other.

**Interpretation:** The graphs compare two time periods. Dark blue band indicates percentage improvement within the given time period, while black band indicates no significant change and light blue deterioration. Improvement = 4 or more, no significant change = -3 to 3 and deterioration = -4 or less.

**Target:** A greater percentage increase in improvement for both community and inpatient settings and a smaller percentage in deterioration.

**Table 2: Difference in HoNOS65+ total score (12 items) for matched pairs by pair type and team, community New Zealand, Apr 2020 - Mar 2021**

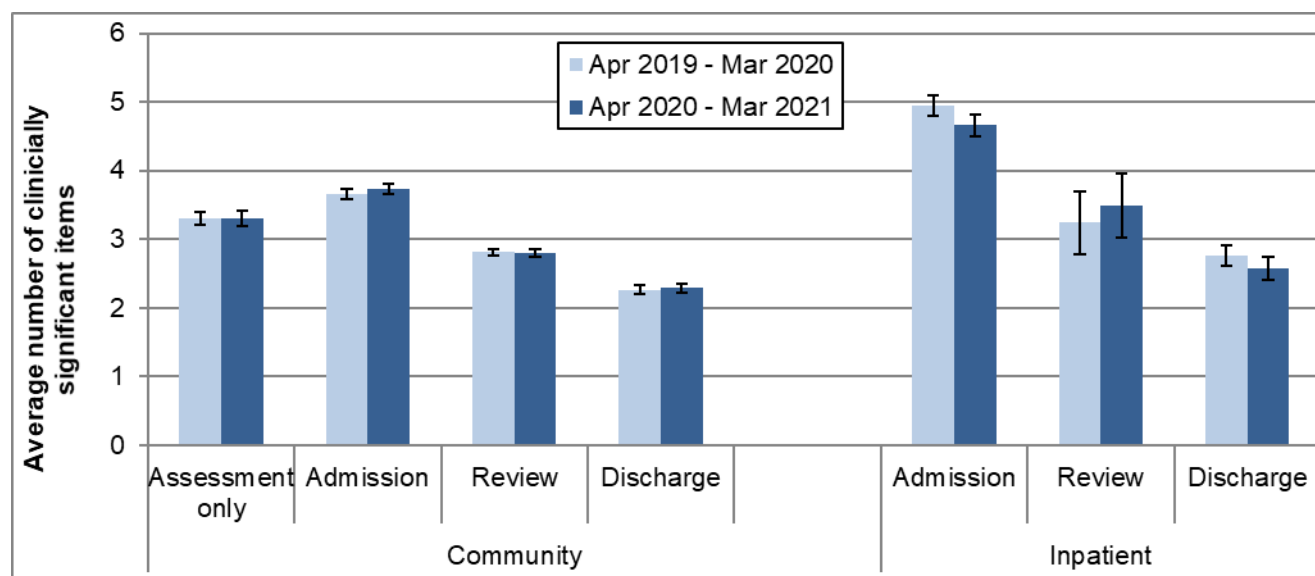
Team Type	Com Adm Rev				Com Rev Rev				Com Adm Dis				Com Adm Dis Change of setting			
	↓ Det	No SC	↑ Imp	N	↓ Det	No SC	↑ Imp	N	↓ Det	No SC	↑ Imp	N	↓ Det	No SC	↑ Imp	N
Community team	13%	65%	23%	93	8%	84%	7%	804	5%	42%	53%	106	32%	36%	32%	44
Kaupapa Māori team					9%	77%	14%	22								
Older people team	10%	59%	31%	598	11%	77%	12%	1,444	4%	50%	46%	1,312	11%	41%	48%	227
Specialty team	9%	65%	26%	116	6%	85%	9%	240	5%	59%	36%	226	48%	48%	4%	23
<b>Total</b>	<b>10%</b>	<b>60%</b>	<b>30%</b>	<b>816</b>	<b>10%</b>	<b>80%</b>	<b>10%</b>	<b>2,531</b>	<b>4%</b>	<b>51%</b>	<b>45%</b>	<b>1,658</b>	<b>17%</b>	<b>40%</b>	<b>43%</b>	<b>297</b>

**Notes:** Shows the difference of the matched pair between the start and end HoNOS65+ total score. Community admission to discharge includes discharge no further care and discharge other.

**Interpretation:** Improvement (↑Imp) = 4 or more, no significant change (No SC) = -3 to 3 and deterioration (↓Det) = -4 or less.

**Target:** A greater percentage increase in improvement for community setting and a smaller percentage in deterioration.

**Graph 3: Average number of clinically significant HoNOS65+ items by collection type: New Zealand, Apr 2019 - Mar 2020 and Apr 2020 - Mar 2021**



**Notes:** Average number clinically significant items = the average number of items in the clinical range (2, 3 or 4) per collection. Community discharge does not include discharge to an inpatient unit.

**Interpretation:** Points are significantly different if error bars don't overlap. A decrease between admission and discharge is an indication of the outcomes achieved by the service and service user. A greater decrease between admission and discharge indicates a better outcome. A lower admission score could be indication of service users seeking out and being engaged by services at a lower level of severity.

**Target:** A greater decrease from admission to discharge and smaller percentage in clinical range at discharge

**Table 3: Average number of clinically significant HoNOS65+ items by collection type and team: New Zealand, Apr 2020 - Mar 2021**

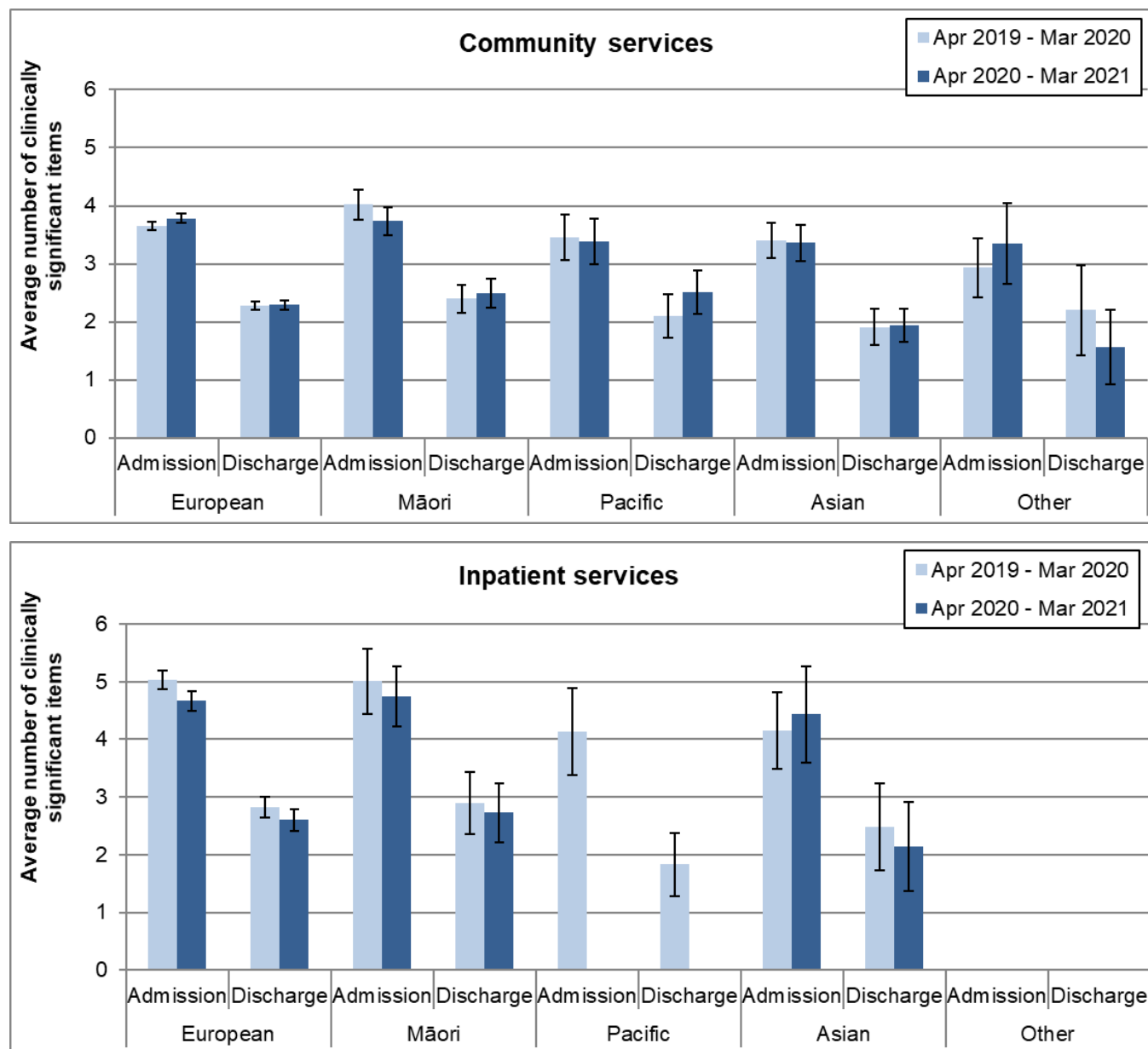
Team type	Assessment only			Admission			Review			Discharge		
	N	Mean	CI	N	Mean	CI	N	Mean	CI	N	Mean	CI
<b>Community services</b>												
Community team	384	3.3	3.1-3.4	283	3.7	3.4-4.0	1,560	2.6	2.5-2.7	234	2.1	1.8-2.4
Kaupapa Māori team							47	3.4	2.8-4.0			
Older people team	697	3.0	2.9-3.2	2,503	3.5	3.4-3.6	3,573	2.7	2.6-2.7	2,033	2.1	2.0-2.2
Specialty team	141	4.8	4.4-5.2	370	5.3	5.1-5.5	436	4.5	4.3-4.7	319	3.7	3.4-3.9
<b>Total</b>	<b>1,232</b>	<b>3.3</b>	<b>3.2-3.4</b>	<b>3,179</b>	<b>3.7</b>	<b>3.7-3.8</b>	<b>5,664</b>	<b>2.8</b>	<b>2.7-2.9</b>	<b>2,605</b>	<b>2.3</b>	<b>2.2-2.4</b>
<b>Inpatient services</b>												
Inpatient team				306	4.7	4.4-4.9	45	4.2	3.3-5.1	228	2.8	2.4-3.1
Older people team				528	4.7	4.5-4.9	80	3.2	2.6-3.7	444	2.5	2.3-2.7
<b>Total</b>				<b>836</b>	<b>4.7</b>	<b>4.5-4.8</b>	<b>132</b>	<b>3.5</b>	<b>3.0-4.0</b>	<b>675</b>	<b>2.6</b>	<b>2.4-2.8</b>

**Notes:** N = number of collections in period. Average = average number of HoNOS65+ items in the clinically significant range (ie scoring 2, 3, or 4). CI = confidence interval for average score. Community discharge does not include discharge to an inpatient unit.

**Interpretation:** If confidence intervals for two scores do not overlap, then the scores have a statistically significant difference. It is important to note that statistical significance may not indicate a clinically significant difference



**Graph 4: Average number of clinically significant HoNOS65+ items at admission and discharge by ethnic group: New Zealand, Apr 2019 - Mar 2020 and Apr 2020 - Mar 2021**

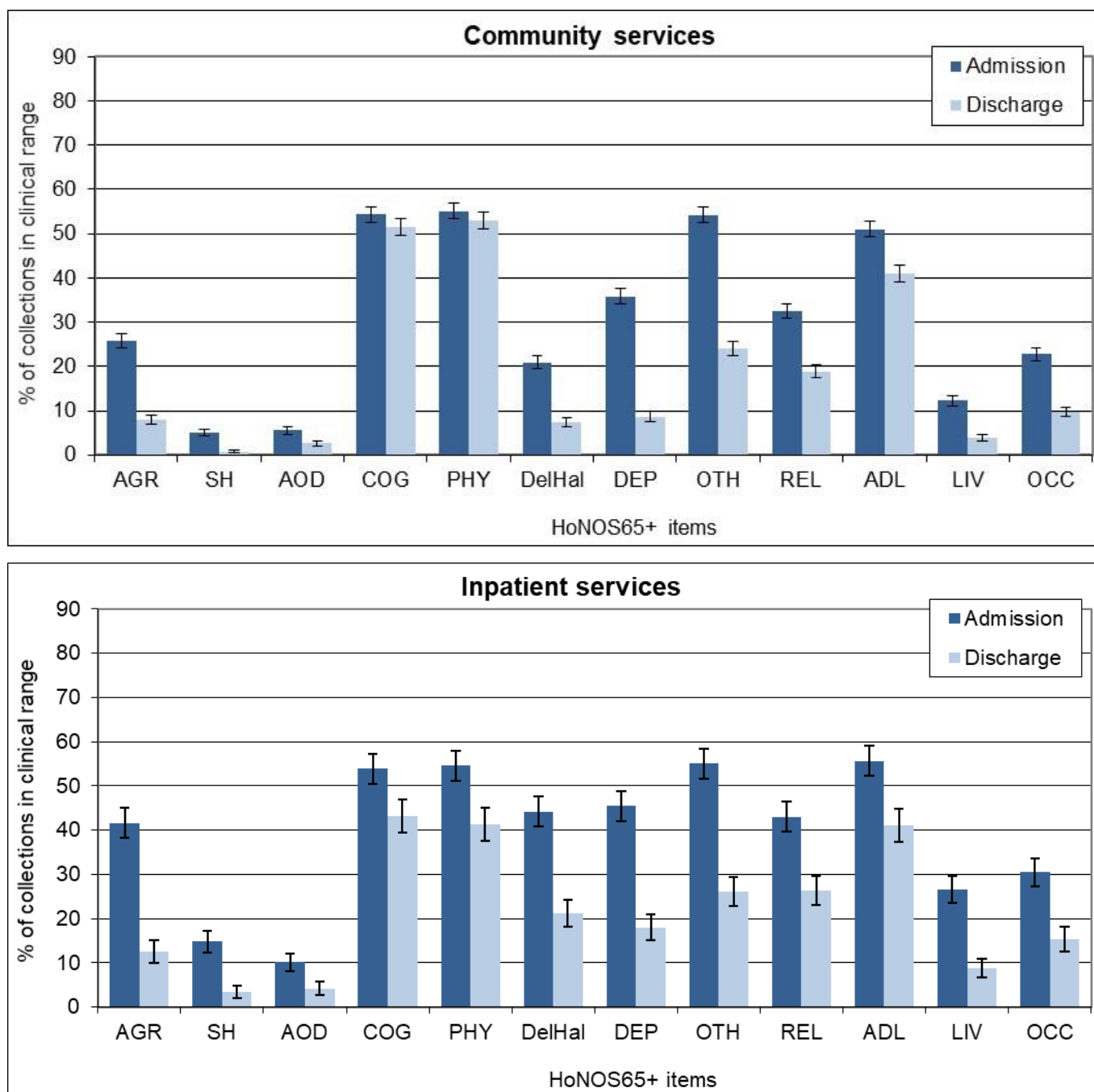


**Notes:** Average number of HoNOS65+ items in the clinical range (2, 3 or 4). Community discharge does not include discharge to an inpatient unit.

**Interpretation:** Points are significantly different if error bars don't overlap. Decrease between admission and discharge is an indication of the outcomes achieved by the service and service user. A greater decrease between admission and discharge indicates a better outcome. A lower admission score could be indication of service users seeking out and being engaged by services at a lower level of acuity.

**Target:** A greater decrease from admission to discharge and smaller percentage in clinical range at discharge.

**Graph 5a: Percentage of collections in clinical range on each HoNOS65+ item (admission and discharge collections): New Zealand, Apr 2020 - Mar 2021**



**Notes:** Percentage of service users in the clinical range (2, 3 or 4) for each HoNOS65+ item. Community discharge does not include discharge to an inpatient unit.

**Interpretation:** The longer the bar, the more prevalent the difficulty measured by the item is amongst service users. A greater decrease in the length of the bar from admission to discharge suggests a better outcome for the difficulty measured by the item. Items that show medium to high frequency and less change may suggest possible targets for service improvement.

**Target:** A greater decrease from admission to discharge and smaller percentage in clinical range at discharge.

**Table 5a: Percentage of collections in clinical range on each HoNOS65+ item (admission and discharge collections) by team: New Zealand Apr 2020 - Mar 2021**

**Community services**

<b>First 6 HoNOS items</b>														
Team type	N		AGR		SH		AOD		COG		PHY		DelHal	
	Adm	Disch	Adm	Disch	Adm	Disch	Adm	Disch	Adm	Disch	Adm	Disch	Adm	Disch
Community team	283	234	21%	6%	11%	4%	14%	9%	30%	24%	60%	51%	20%	9%
Older people team	2,502	2,033	24%	7%	4%	0%	4%	2%	54%	53%	52%	51%	21%	7%
Specialty team	370	319	40%	18%	5%	1%	6%	3%	74%	66%	74%	70%	22%	8%
<b>Total</b>	<b>3,178</b>	<b>2,603</b>	<b>26%</b>	<b>8%</b>	<b>5%</b>	<b>1%</b>	<b>6%</b>	<b>3%</b>	<b>54%</b>	<b>52%</b>	<b>55%</b>	<b>53%</b>	<b>21%</b>	<b>7%</b>
<b>Second 6 HoNOS items</b>														
Team type	DEP		OTH		REL		ADL		LIV		OCC			
	Adm	Disch	Adm	Disch	Adm	Disch	Adm	Disch	Adm	Disch	Adm	Disch		
Community team	49%	15%	61%	36%	31%	18%	41%	22%	13%	5%	20%	11%		
Older people team	33%	6%	51%	20%	28%	15%	51%	41%	10%	3%	20%	7%		
Specialty team	46%	21%	71%	42%	62%	46%	63%	59%	23%	10%	46%	23%		
<b>Total</b>	<b>36%</b>	<b>9%</b>	<b>54%</b>	<b>24%</b>	<b>32%</b>	<b>19%</b>	<b>51%</b>	<b>41%</b>	<b>12%</b>	<b>4%</b>	<b>23%</b>	<b>10%</b>		

## Inpatient services

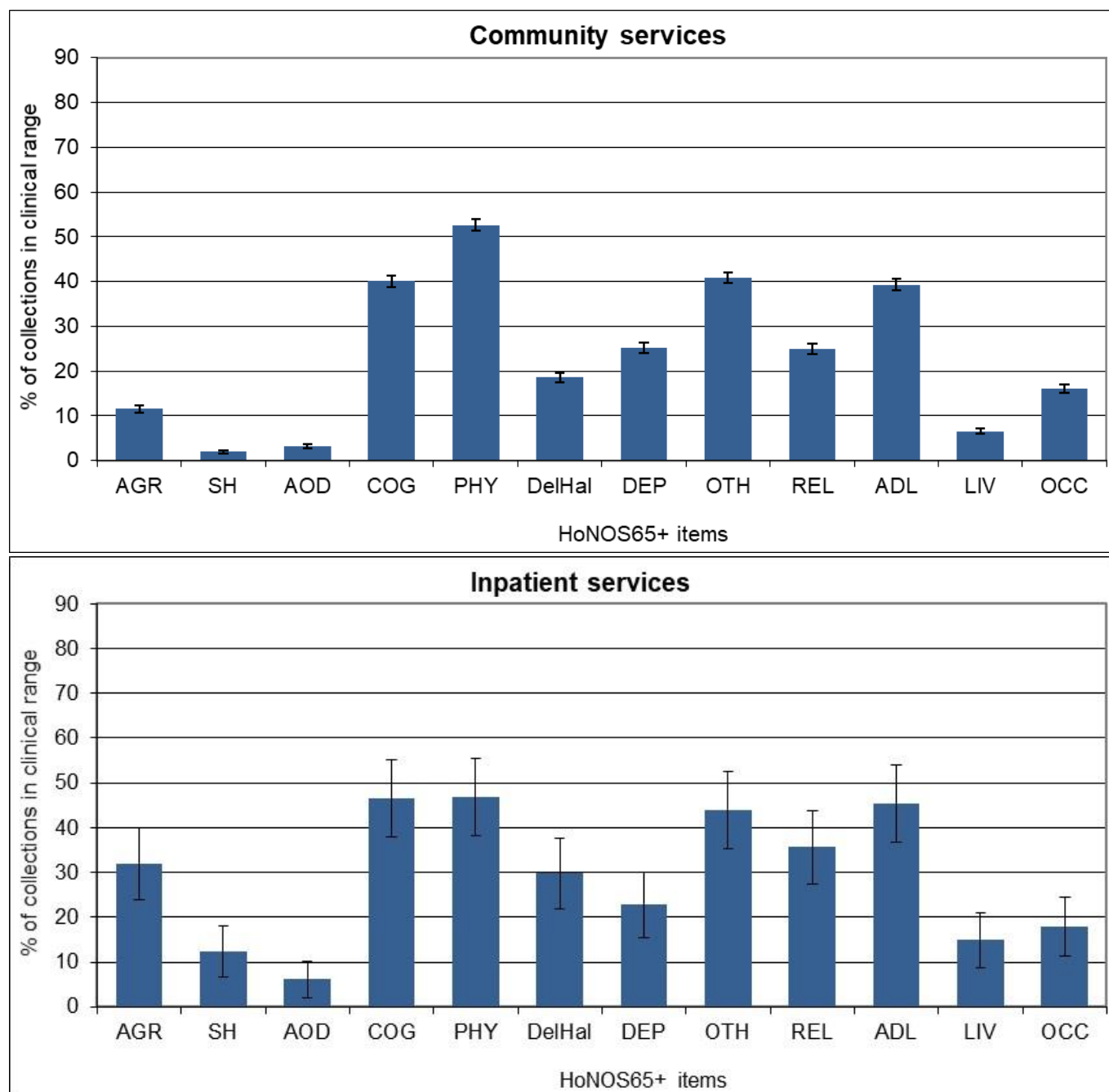
First 6 HoNOS items														
Team type	N		AGR		SH		AOD		COG		PHY		DelHal	
	Adm	Disch	Adm	Disch	Adm	Disch	Adm	Disch	Adm	Disch	Adm	Disch	Adm	Disch
Inpatient team	306	228	43%	14%	16%	4%	14%	8%	48%	33%	55%	40%	48%	22%
Older people team	528	444	41%	12%	14%	3%	8%	2%	58%	48%	54%	42%	42%	20%
<b>Total</b>	<b>836</b>	<b>675</b>	<b>42%</b>	<b>13%</b>	<b>15%</b>	<b>3%</b>	<b>10%</b>	<b>4%</b>	<b>54%</b>	<b>43%</b>	<b>55%</b>	<b>41%</b>	<b>44%</b>	<b>21%</b>
Second 6 HoNOS items														
Team type	DEP		OTH		REL		ADL		LIV		OCC			
	Adm	Disch	Adm	Disch	Adm	Disch	Adm	Disch	Adm	Disch	Adm	Disch		
Inpatient team	47%	22%	60%	37%	42%	36%	49%	33%	23%	12%	28%	14%		
Older people team	45%	16%	52%	20%	44%	21%	60%	45%	29%	7%	32%	16%		
<b>Total</b>	<b>45%</b>	<b>18%</b>	<b>55%</b>	<b>26%</b>	<b>43%</b>	<b>26%</b>	<b>56%</b>	<b>41%</b>	<b>27%</b>	<b>9%</b>	<b>30%</b>	<b>15%</b>		

**Notes:** Percentage of service users in the clinical range (2, 3 or 4) for each HoNOS65+ item. Community discharge does not include discharges to an inpatient unit.

**Interpretation:** The higher the percentage, the more prevalent the difficulty measured by the item is amongst service users. A greater decrease between admission and discharge suggests a better outcome for the difficulty measured by the item. Items that show medium to high frequency and less change may suggest possible targets for service improvement.

**Target:** A greater decrease from admission to discharge and smaller percentage in clinical range at discharge.

**Graph 5b: Percentage of collections in clinical range on each HoNOS65+ item (review collections): New Zealand, Apr 2020 - Mar 2021**



**Notes:** Percentage of service users in the clinical range (2, 3 or 4) for each HoNOS65+ item on review collections. Due to most admission being less than 91 days, the data set for review collections in inpatient settings is relatively small.

**Interpretation:** The longer the bar, the more prevalent the difficulty measured by the item is amongst service users.

**Table 5b: Percentage of collections in clinical range on each HoNOS65+ item (review collections) by team: New Zealand, Apr 2020 - Mar 2021**

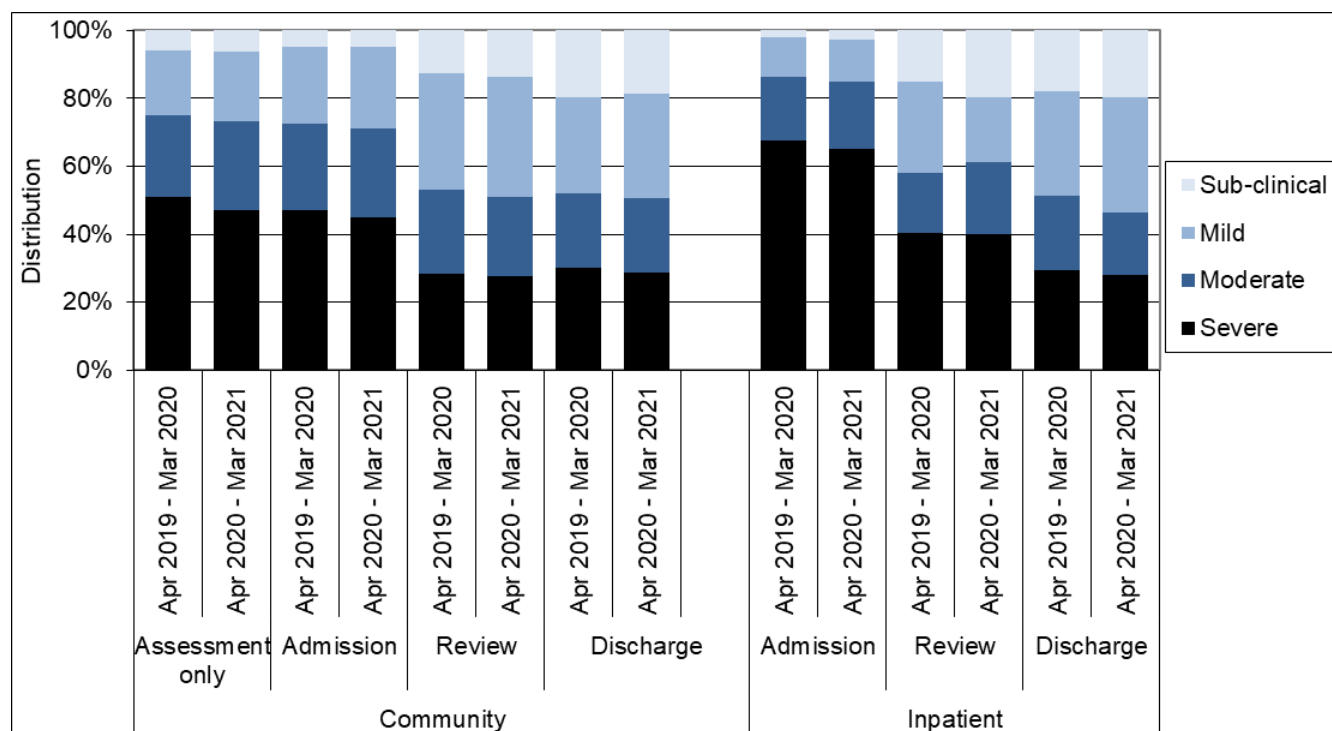
Team type	N	AGR	SH	AOD	COG	PHY	DelHal	DEP	OTH	REL	ADL	LIV	OCC
<b>Community services</b>													
Community team	1,559	7%	3%	5%	26%	51%	26%	27%	43%	25%	29%	6%	12%
Kaupapa Māori team	47	11%	9%	19%	30%	68%	49%	26%	39%	13%	32%	23%	19%
Older people team	3,572	12%	2%	2%	43%	50%	15%	22%	37%	21%	42%	5%	16%
Specialty team	436	23%	0%	5%	69%	75%	16%	44%	61%	55%	57%	15%	31%
<b>Total</b>	<b>5,662</b>	<b>12%</b>	<b>2%</b>	<b>3%</b>	<b>40%</b>	<b>53%</b>	<b>19%</b>	<b>25%</b>	<b>41%</b>	<b>25%</b>	<b>39%</b>	<b>7%</b>	<b>16%</b>
<b>Inpatient services</b>													
Inpatient team	45	38%	16%	11%	38%	47%	38%	22%	47%	56%	58%	27%	27%
Older people team	80	29%	11%	4%	52%	45%	25%	24%	45%	23%	40%	8%	14%
<b>Total</b>	<b>132</b>	<b>32%</b>	<b>12%</b>	<b>6%</b>	<b>47%</b>	<b>47%</b>	<b>30%</b>	<b>23%</b>	<b>44%</b>	<b>36%</b>	<b>45%</b>	<b>15%</b>	<b>18%</b>

**Notes:** Percentage of service users in the clinical range (2, 3 or 4) for each HoNOS65+ item on review collections. Due to most admission being less than 91 days, the data set for review collections in inpatient settings is relatively small.

**Interpretation:** The higher the percentage, the more prevalent the difficulty measured by the item is amongst service users.



**Graph 6: Index of Severity ratings for HoNOS65+ by collection type: New Zealand, Apr 2019 - Mar 2020 and Apr 2020 - Mar 2021**



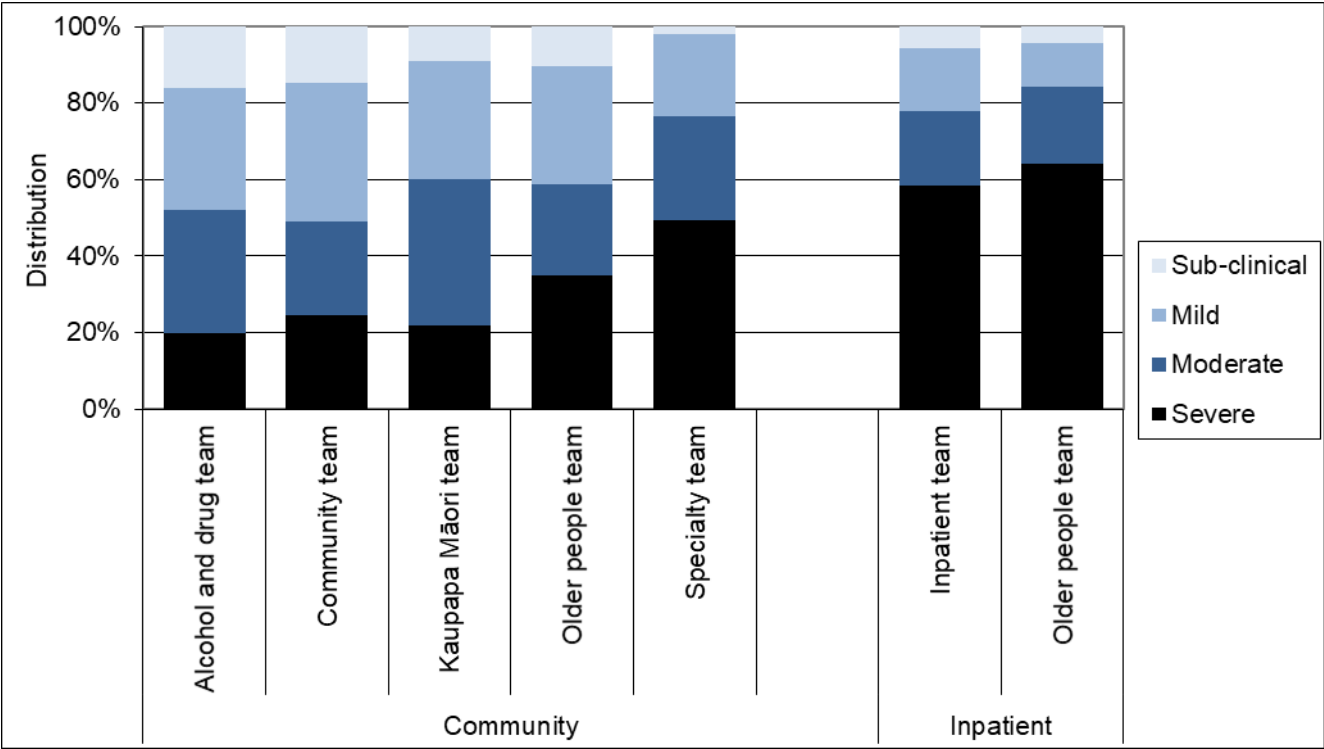
**Notes:** Community discharge does not include discharge to an inpatient unit. Index of Severity: Sub clinical = all items <2, mild = at least one item >1 and all items <3, moderate = at least one item >=3, severe = at least 2 items >=3 using first 10 items.

**Interpretation:** Darker bars indicate higher overall level of severity. More positive outcome is shown by larger decrease in darker sections of bar between admission and discharge.

## 2. Other measures of service activity

This section presents other information related to data collected in PRIMHD that may be helpful for understanding how teams are operating. This includes information relevant to caseload intensity and team activity.

**Graph 7: Index of severity for HoNOS65+ (admission and review collections) by team, New Zealand, Apr 2020 - Mar 2021**



**Notes:** Only data related to collection at admission and review is included so that results reflect the severity of service users during their engagement with the service. Index of Severity: Sub clinical = all items <2, mild = at least one item >1 and all items <3, moderate = at least one item >=3, severe = at least 2 items >=3 using first 10 items.

**Interpretation:** This graph gives an impression of the overall severity of the caseload for different teams at admission. The longer the darker bar, the higher the overall severity of the team’s caseload.

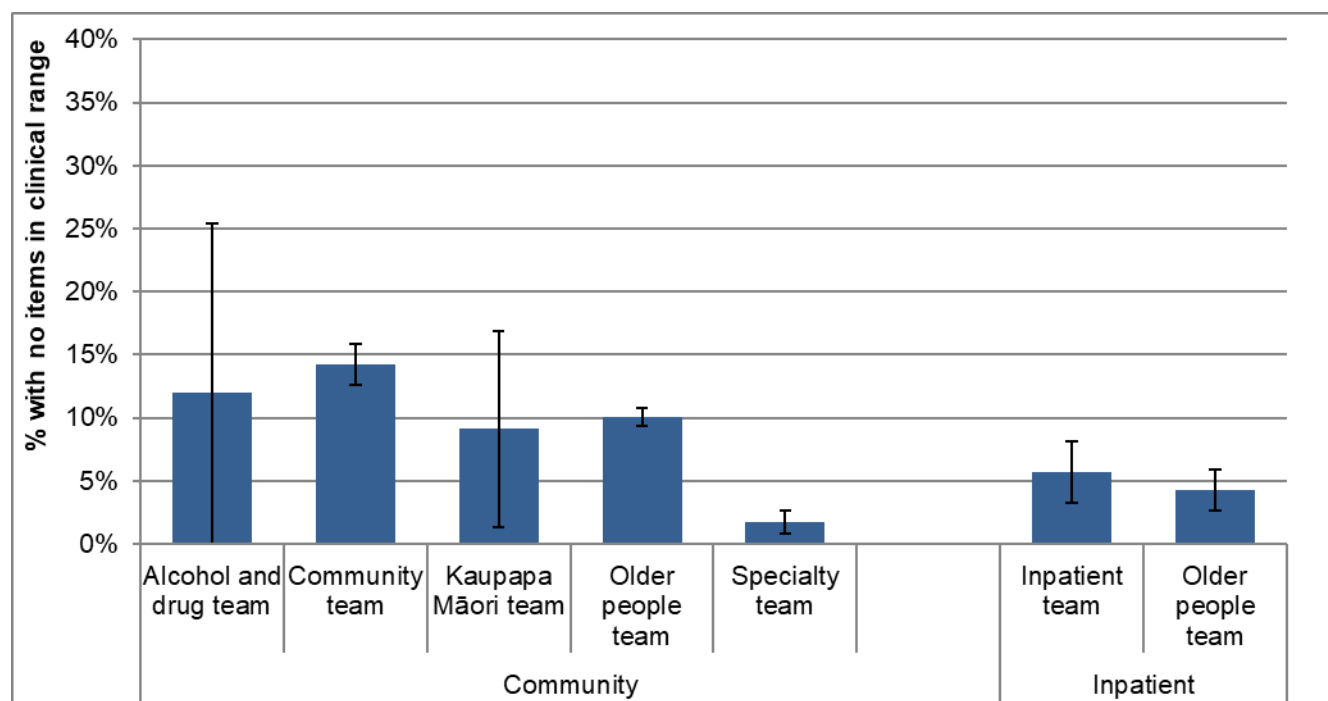
**Table 7: Index of Severity for HoNOS65+ by collection type and team: New Zealand, Apr 2020 - Mar 2021**

Team type	Assessment only					Admission					Review					Discharge				
	Sub	Mild	Mod	Sev	N	Sub	Mild	Mod	Sev	N	Sub	Mild	Mod	Sev	N	Sub	Mild	Mod	Sev	N
<b>Community services</b>																				
Community team	4%	18%	35%	43%	384	8%	20%	27%	45%	283	16%	39%	24%	21%	1,560	28%	31%	24%	17%	234
Kaupapa Māori team											9%	32%	36%	23%	47					
Older people team	8%	23%	22%	47%	697	5%	25%	26%	43%	2,503	14%	35%	22%	29%	3,573	19%	31%	21%	29%	2,033
Specialty team	2%	18%	22%	58%	141	1%	17%	25%	56%	370	2%	26%	28%	44%	436	8%	29%	24%	40%	319
<b>Total</b>	<b>6%</b>	<b>20%</b>	<b>26%</b>	<b>47%</b>	<b>1,232</b>	<b>5%</b>	<b>24%</b>	<b>26%</b>	<b>45%</b>	<b>3,179</b>	<b>14%</b>	<b>35%</b>	<b>23%</b>	<b>28%</b>	<b>5,664</b>	<b>19%</b>	<b>31%</b>	<b>22%</b>	<b>29%</b>	<b>2,605</b>
<b>Inpatient services</b>																				
Inpatient team						4%	17%	19%	60%	306	18%	13%	20%	49%	45	24%	32%	18%	27%	228
Older people team						2%	10%	20%	68%	528	21%	20%	21%	38%	80	18%	34%	19%	29%	444
<b>Total</b>						<b>3%</b>	<b>13%</b>	<b>20%</b>	<b>65%</b>	<b>836</b>	<b>20%</b>	<b>19%</b>	<b>21%</b>	<b>40%</b>	<b>132</b>	<b>20%</b>	<b>34%</b>	<b>19%</b>	<b>28%</b>	<b>675</b>

**Notes:** Sub = sub clinical, Mild = mild, Mod = moderate, Sev = severe on Index of Severity. Only admission collection data is included so that results reflect the severity of service users during their engagement with the service. Index of Severity: Sub clinical = all items <2, mild = at least one item >1 and all items <3, moderate = at least one item >=3, severe = at least 2 items >=3 using first 10 items. Community discharge does not include discharge to an inpatient unit.

**Interpretation:** Larger percentages in the columns to the right for each type of collection, the higher the overall severity of the team's caseload.

**Graph 8: Collections with no HoNOS65+ items in clinical range: New Zealand, Apr 2020 - Mar 2021**



**Notes:** Includes admission and review collections. Shows percentage of service users with all HoNOS65+ items less than two, ie no HoNOS65+ items in the clinical range.

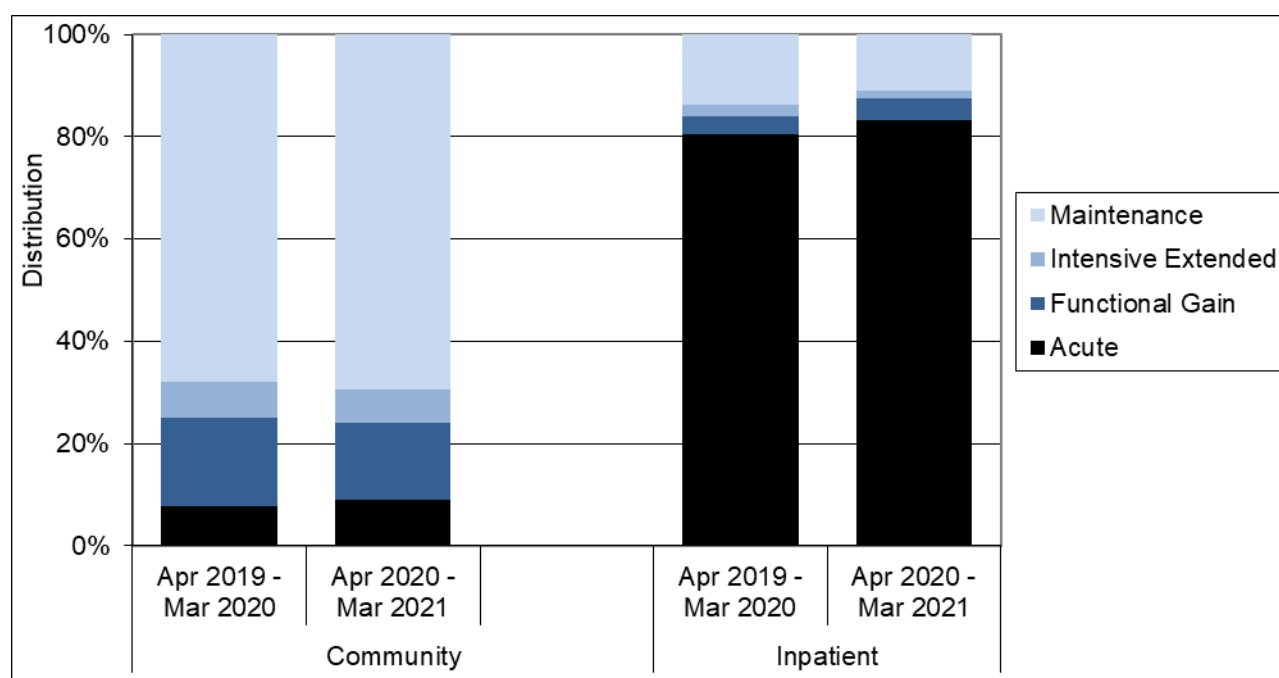
**Interpretation:** There are a variety of reasons that may make it appropriate for service users to remain in the service even though they show no HoNOS65+ items in the clinical range. However, teams showing a larger or substantial percentage of service users with no HoNOS65+ items in the clinical range could benefit from reviewing these cases to ensure that the service remains appropriate for this service user.

**Table 8: Collections with no HoNOS65+ items in clinical range: New Zealand, Apr 2020 - Mar 2021**

Team type	Number of collections with no items in clinical range	Percentage with no items in clinical range
<b>Community services</b>		
Alcohol and drug team	3	12%
Community team	262	14%
Kaupapa Māori team	5	9%
Older people team	611	10%
Specialty team	14	2%
<b>Total</b>	<b>903</b>	<b>10%</b>
<b>Inpatient services</b>		
Inpatient team	20	6%
Older people team	26	4%
<b>Total</b>	<b>47</b>	<b>5%</b>

**Notes:** For further information see notes for graph 8.

**Graph 9: Focus of care categories: New Zealand, Apr 2019 - Mar 2020 and Apr 2020 - Mar 2021**



**Notes:** Data from review and discharge collections.

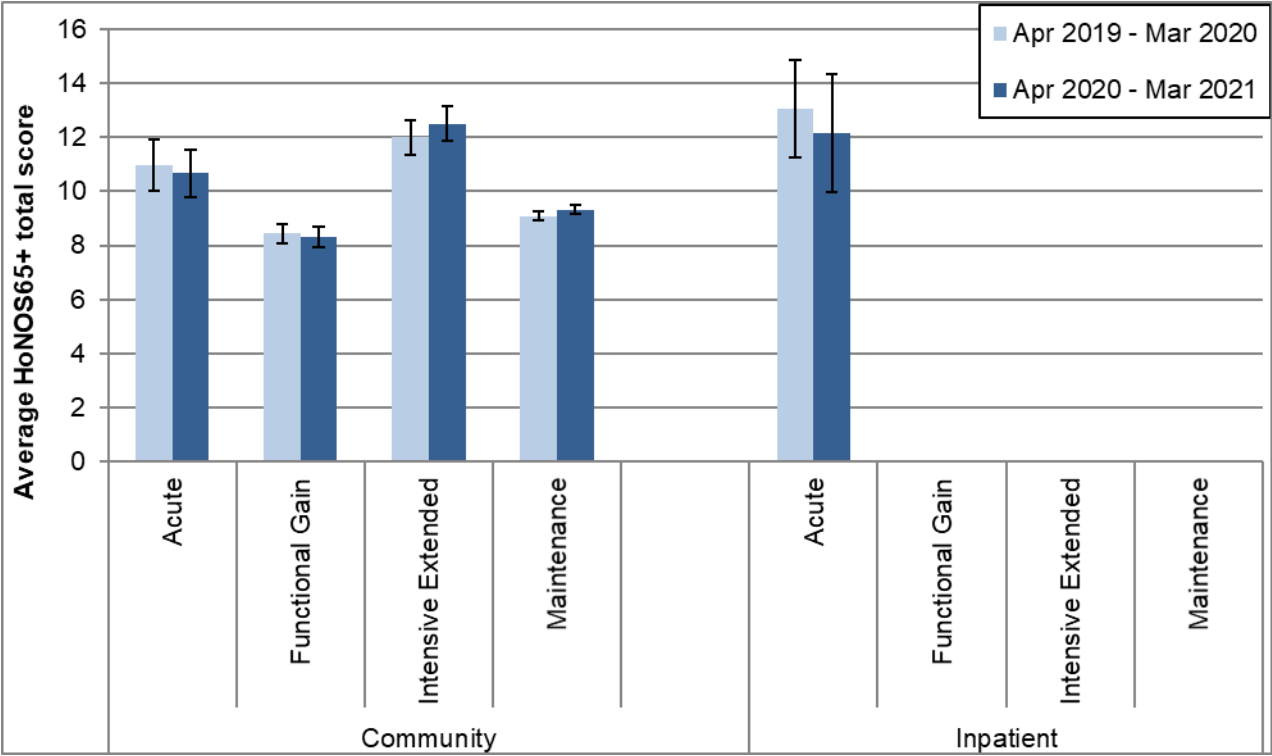
**Interpretation:** Darker bars indicate more intensive involvement in care, so a longer, darker bar in general suggests more intensive working. A longer functional gain bar and shorter maintenance bar potentially suggests more recovery focused ways of working.

**Table 9: Focus of care categories by team: New Zealand, Apr 2019 - Mar 2020 and Apr 2020 - Mar 2021**

Team type	Acute		Functional gain		Intensive extended		Maintenance		Number of collections	
	Last	This	Last	This	Last	This	Last	This	Last	This
<b>Community services</b>										
Alcohol and drug team		0%		74%		0%		26%		27
Community team	6%	5%	22%	18%	5%	5%	68%	71%	1,749	1,586
Kaupapa Māori team	8%	0%	8%	14%	5%	0%	79%	86%	39	50
Older people team	9%	11%	16%	14%	6%	6%	69%	69%	4,820	4,529
Pacific people team	0%		32%		0%		68%		22	
Specialty team	3%	3%	16%	11%	18%	16%	63%	70%	791	698
<b>Total</b>	<b>8%</b>	<b>9%</b>	<b>17%</b>	<b>15%</b>	<b>7%</b>	<b>6%</b>	<b>68%</b>	<b>70%</b>	<b>7,459</b>	<b>6,930</b>
<b>Inpatient services</b>										
Inpatient team	77%	80%	5%	5%	5%	3%	13%	11%	298	239
Older people team	83%	86%	3%	4%	0%	0%	14%	10%	401	399
<b>Total</b>	<b>80%</b>	<b>83%</b>	<b>4%</b>	<b>4%</b>	<b>2%</b>	<b>1%</b>	<b>14%</b>	<b>11%</b>	<b>699</b>	<b>648</b>

**Notes:** For further information see notes for Graph 9.

Graph 10: HoNOS65+ total score (review collections) by focus of care: New Zealand, Apr 2019 - Mar 2020 and Apr 2020 - Mar 2021



**Notes:** This data is just for review collections.

**Interpretation:** Points are significantly different if error bars don't overlap. A general downward trend in scores from acute to maintenance focus of care might be expected.



**Table 10: HoNOS65+ total score (review collections) by focus of care by team: New Zealand, Apr 2020 - Mar 2021**

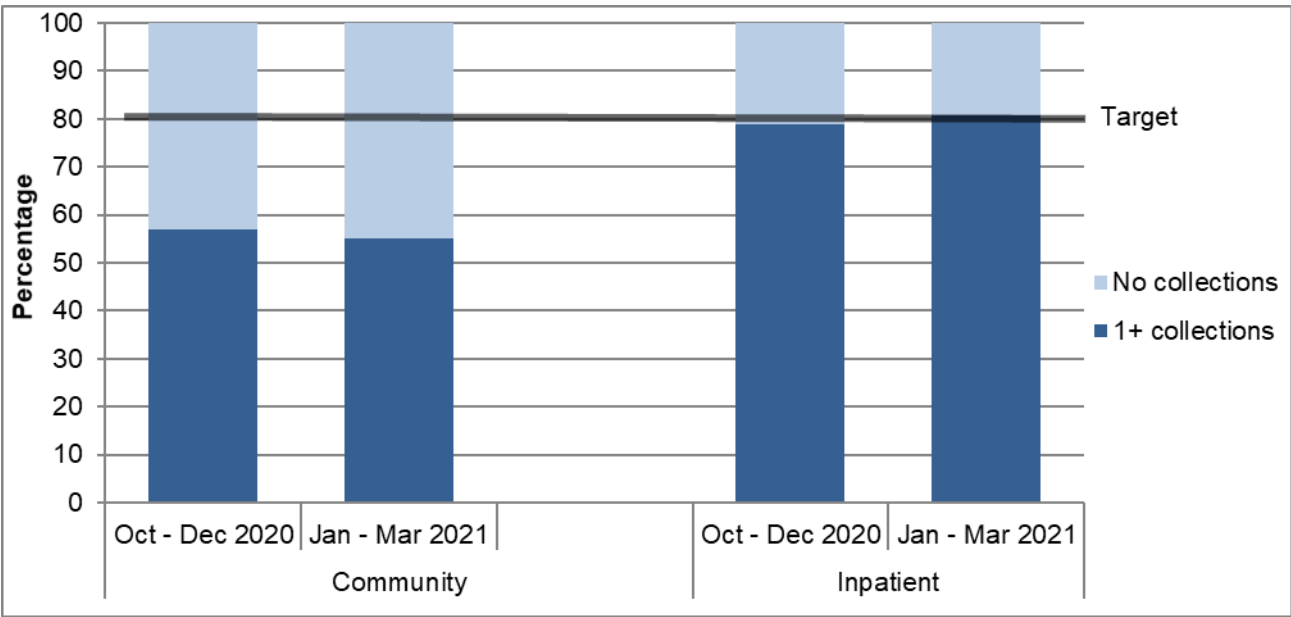
Team type	Acute			Functional Gain			Intensive Extended			Maintenance		
	N	Mean	CI	N	Mean	CI	N	Mean	CI	N	Mean	CI
<b>Community services</b>												
Community team	29	13.7	11.1-16.2	227	8.9	8.2-9.6	74	10.5	8.9-12.1	997	8.5	8.2-8.8
Kaupapa Māori team										39	10.6	8.9-12.2
Older people team	165	10.0	9.1-10.9	392	7.4	6.9-7.8	186	12.2	11.4-13.1	2,033	9.1	8.8-9.3
Specialty team				43	14.3	12.9-15.8	74	15.1	14.1-16.2	300	14.0	13.4-14.6
<b>Total</b>	<b>199</b>	<b>10.7</b>	<b>9.8-11.5</b>	<b>688</b>	<b>8.3</b>	<b>7.9-8.7</b>	<b>334</b>	<b>12.5</b>	<b>11.9-13.2</b>	<b>3,395</b>	<b>9.3</b>	<b>9.2-9.5</b>
<b>Inpatient services</b>												
Older people team	40	11.6	9.1-14.2									
<b>Total</b>	<b>58</b>	<b>12.2</b>	<b>10.0-14.3</b>									

**Notes:** For further information see notes for Graph 10.

### 3. Collection completion and validity

This section presents information about the completeness and validity of the data on which the remainder of this report is based. It also shows the current targets for the variables presented.

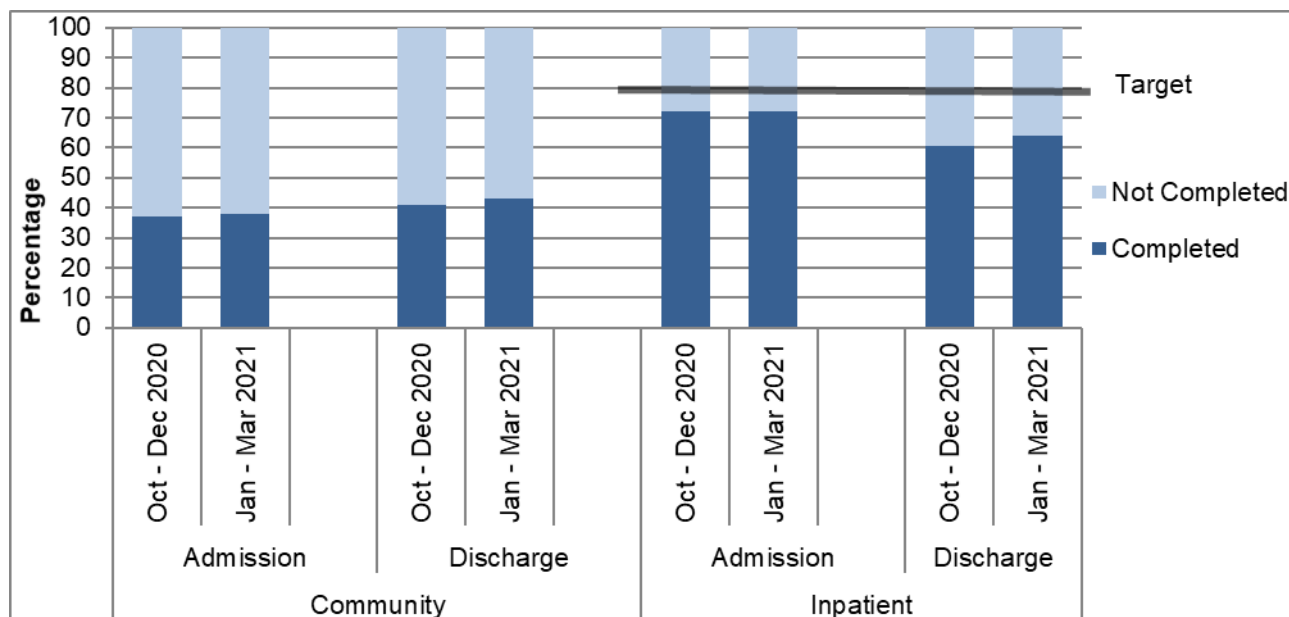
**Graph 11: Percentage of service users with at least one collection during the period: New Zealand, Oct – Dec 2020 and Jan – Mar 2021 (65 years and over)**



**Interpretation:** The longer the dark part of the bar, the more completely the data set includes all service users, and the more meaningful and representative the graphs, tables, and analyses using these data will be. This data is approximate due to movement of service users between teams and similar variations; however, it does provide a reasonably accurate representation of completion of measures. Only data with valid collections is included.

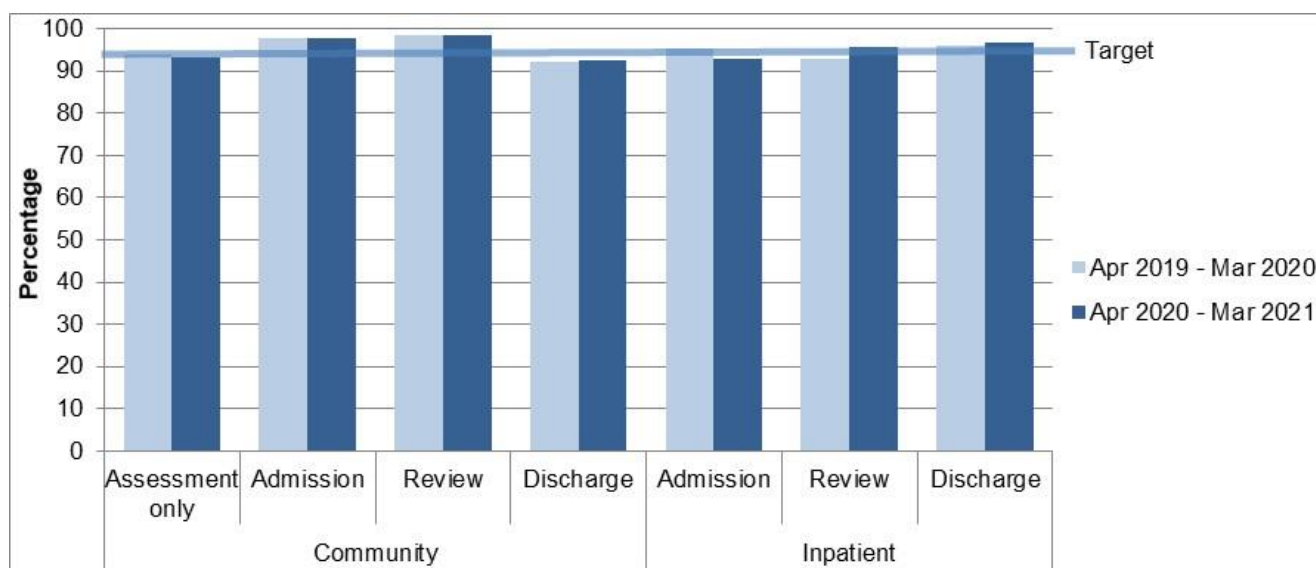
**Target:** To meet or exceed the target shown on the graph for the percentage of service users with at least one collection within the period.

**Graph 12: Percentage of service users with admission and discharge collections completed: New Zealand, Oct – Dec 2020 and Jan – Mar 2021 (65 years and over)**



**Interpretation:** The longer the dark bar, the larger the percentage of admission and discharge that had the relevant data collection type. Data is approximate due to movement of service users between teams and similar variations; however, it does provide a reasonably accurate representation of completion of measures. Only data with valid collections is included.

**Graph 13: Percentage of valid collections, HoNOS65+: New Zealand, Apr 2019 - Mar 2020 and Apr 2020 - Mar 2021**



**Notes:** Valid = Two or fewer of the 12 items scored as unknown or missing. Discharge excludes collection types for lost to care, discharge dead and brief episode of care. Collection in drug and alcohol teams is not required, therefore AOD data is excluded.

**Interpretation:** The longer the dark lines, the higher the percentage of valid scores.

**Target:** Aim for 95% valid collections.

**Table 13: Invalid collections by team, by HoNOS65+ item: New Zealand, Apr 2020 - Mar 2021**

Team type	% Invalid			Number of invalid ratings by HoNOS item												Total number
	Adm	Rev	Dch	1	2	3	4	5	6	7	8	9	10	11	12	
Community services																
Community team	2%	1%	10%	64	69	78	79	67	67	74	83	72	74	76	89	2,658
Kaupapa Māori team		4%		1	2	1	1	2	1	2	2	2	1	1	1	62
Older people team	2%	2%	8%	329	373	368	436	351	420	405	522	372	358	404	450	9,621
Specialty team	1%	1%	2%	23	23	27	23	23	32	28	17	30	32	36	40	1,324
Total	2%	2%	8%	419	470	481	542	445	523	511	626	479	468	520	588	13,717
Inpatient services																
Inpatient team	3%	0%	2%	8	8	8	13	11	15	14	19	11	10	25	25	583
Older people team	9%	7%	4%	5	16	37	40	14	45	46	50	50	32	146	182	1,125
Total	7%	4%	3%	13	24	45	53	25	60	60	69	61	42	172	211	1,718

**Notes:** Per cent (%) invalid collections = the percentage of collections that had three or more of the 12 items scored as unknown or missing. Number of invalid ratings by HoNOS65+ item = for each of the HoNOS65+ items, the number of collections for which that item was unknown or missing. Discharge excludes collection types for lost to care, deceased and brief episode of care. Collection in drug and alcohol teams is not required, therefore AOD data is excluded.

**Interpretation:** The lower the per cent invalid, the higher the percentage of valid scores. The lower the number of invalid collections by HoNOS65+ item, the more collections that have valid data on that HoNOS65+ item.

**Target:** Aim for 95% valid collections (5% invalid collections) or better. Aim for as few invalid items as possible, with all items having a similar validity rate.