

PRIMHD Summary Report - HoNOSCA

Health of the Nation Outcomes Scales - Child and youth report for New Zealand



This report summarises national Programme for the Integration of Mental Health Data (PRIMHD) data submitted by district health boards (DHBs). In particular, it presents Health of the National Outcomes Scale Child and Adolescent aged 4 to 17 (HoNOSCA) data, from services where HoNOSCA is the primary measure.

This report is organised into three major sections that provide information about:

1. **Collection completion and validity:** This details the completeness of the data set provided by your mental health services. This is important because it indicates how valid and reliable the data sets are likely to be. The less complete the data set, the less valid the information is likely to be.
2. **Outcomes related information:** This provides indications about what changes have occurred for service users between entering and leaving the service. Outcome is assessed by comparing the group admitted and the group discharged from the service in the same time period. This should provide a reasonable indication of outcomes achieved unless the service user mix has changed significantly over the usual period for which service is delivered.
3. **Service related information:** This provides information about the services, such as the overall severity of service users who use different services.

In many cases the data is presented graphically for New Zealand, and then presented as a table for the individual team types (see team type classification factsheet).

The time period covered differs for the different data presented. See the title or the notes under the graphs or tables for information about the time period covered. Unless otherwise stated, the notes under the graphs also apply to the corresponding table.

For all graphs and tables, if there are less than twenty cases in the data set, then the information is not presented. This is because small samples frequently provide inaccurate and potentially misleading results. See the notes and user guide for other important information about the graphs and tables.

Where appropriate, the statistical **confidence interval** is presented. This is shown by error bars (small lines above and below the average) on the graphs, and a score range in some tables. As a rule of thumb, if the confidence intervals of two data points do not overlap, the two points can be considered to be significantly different. If the confidence intervals of the data points do overlap, we assume the points are not significantly different. It is important to note that statistical significance may not indicate a clinically significant difference. **See the associated user guide for more information** about how to understand and use the data presented in this report.

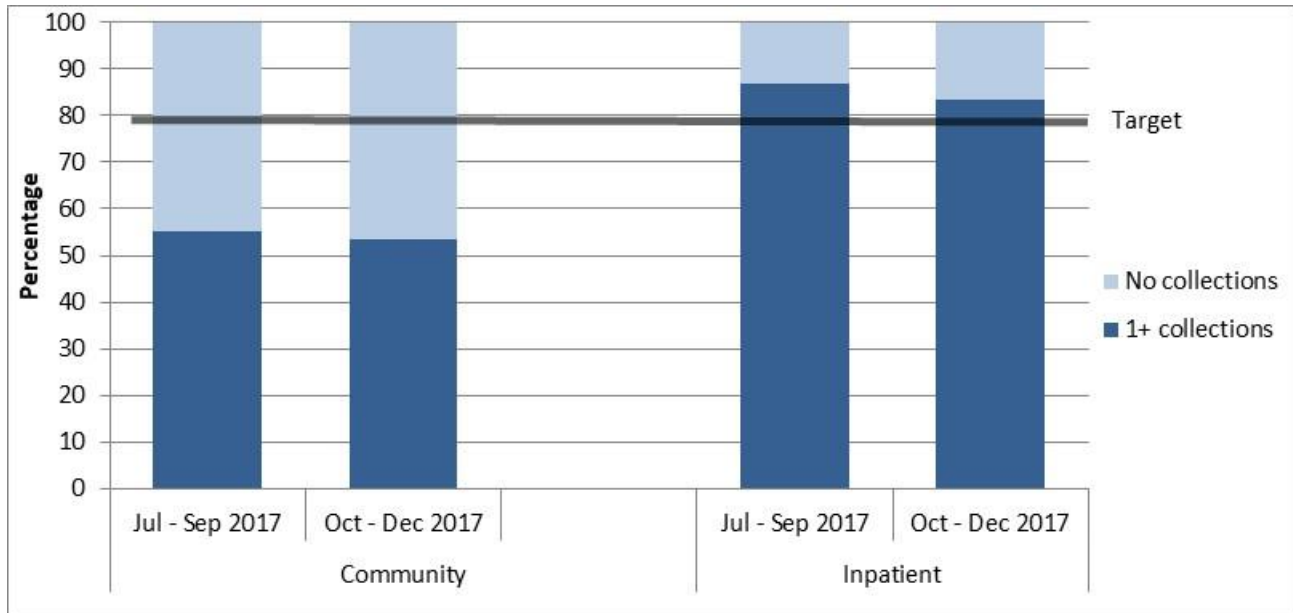
Data for graphs 1 and 2 was extracted 9 April 2018 from PRIMHD by the Ministry of Health and formatted by Te Pou. The data for graphs and tables 3 to 12 was extracted 9 April 2018 from PRIMHD by the Ministry of Health, then analysed and formatted by Te Pou.

Please note: For this period a few DHBs have incomplete data which will affect New Zealand totals.

1. Collection completion and validity

This section presents information about the completeness and validity of the data on which the remainder of this report is based. It also shows the current targets for the variables presented.

Graph 1: Percentage of service users with at least one collection during the period, New Zealand, Jul - Sep 2017 and Oct - Dec 2017 (4 to 17 years)

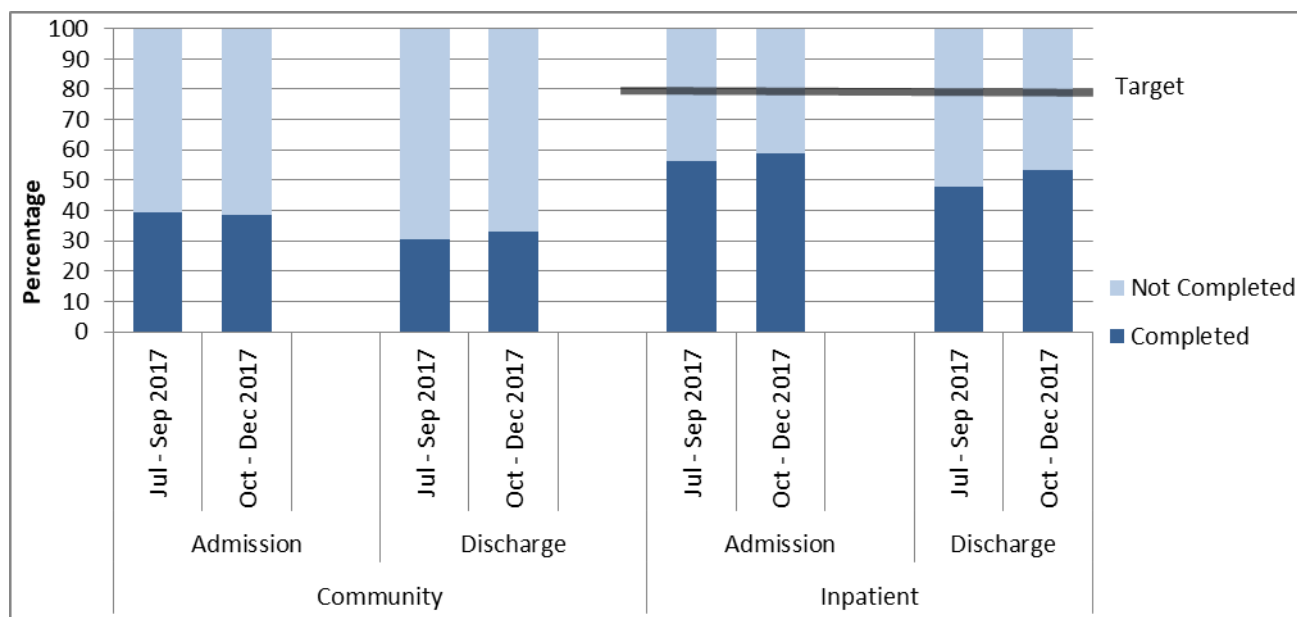


Notes: Community compliance is affected by crisis teams completing triage or brief assessment type activity which is not a comprehensive assessment.

Interpretation: The longer the dark part of the bar, the more completely the data set includes all service users, and the more meaningful and representative the graphs, tables, and analyses using these data will be. Data is approximate due to movements of service users between teams and similar variations; however, it does provide a reasonably accurate representation of completion of measures. Only data with valid collections is included.

Target: To meet or exceed the target shown on the graph for the percentage of service users with at least one collection within the period.

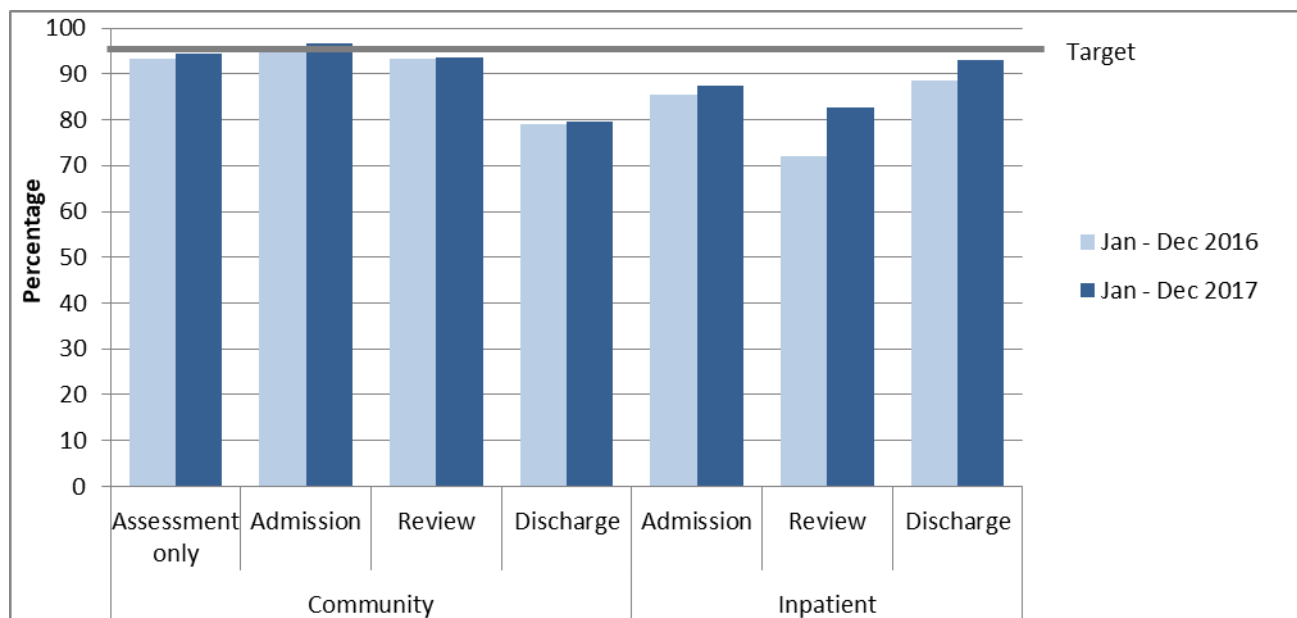
Graph 2: Percentage of service users with admission and discharge collections completed, New Zealand, Jul - Sep 2017 and Oct - Dec 2017 (4 to 17 years)



Notes: Community compliance is affected by crisis teams completing triage or brief assessment type activity which is not a comprehensive assessment.

Interpretation: The longer the dark bar, the larger the percentage of admission and discharge that had the relevant data collection type. Data is approximate due to movements of service users between teams and similar variations; however, it does provide a reasonably accurate representation of completion of measures. Only data with valid collections is included.

Graph 3: Percentage of valid collections, HoNOSCA, New Zealand, Jan - Dec 2016 and Jan - Dec 2017



Notes: Valid = Two or fewer of the 15 items scored as unknown or missing. Discharge excludes collection types for lost to care, discharge dead and brief episode of care. Collection in drug and alcohol teams is not required, therefore AOD data is excluded.

Interpretation: The longer the dark lines, the higher the percentage of valid scores.

Target: Aim for 95% valid collections.

Table 3: Invalid collections by team, by HoNOSCA item, New Zealand, Jan - Dec 2017

Team type	% Invalid			Number of invalid ratings by HoNOSCA item															Total number
	Adm	Rev	Dch	1	2	3	4	5	6	7	8	9	10	11	12	13	14	15	
Community services																			
Child and youth team	3%	6%	18%	2,277	2,372	2,378	2,592	2,730	2,387	2,381	2,414	2,326	2,443	2,389	2,349	2,797	2,570	2,574	30,348
Community team	8%	14%	38%	52	55	50	65	79	54	58	61	60	65	56	60	119	91	88	623
Eating disorders team	1%	0%	6%	7	10	9	7	6	7	7	8	6	8	7	7	9	7	7	442
Forensic team	5%	12%	31%	41	44	41	46	77	40	41	41	40	43	41	86	95	166	160	529
Kaupapa Māori team	10%	16%	51%	226	236	238	265	268	248	251	256	238	249	242	236	267	258	254	1,124
Pacific people team	14%	10%	70%	178	176	179	184	194	176	176	176	178	181	175	180	185	179	179	345
Specialty team	2%	1%	17%	155	164	164	189	196	172	168	167	157	166	155	167	199	168	164	2,325
Total	3%	6%	20%	2,937	3,058	3,060	3,349	3,551	3,085	3,083	3,124	3,006	3,156	3,066	3,086	3,672	3,440	3,427	35,738
Inpatient services																			
Child and youth team	19%	19%	11%	91	101	108	146	187	111	106	121	102	153	109	143	266	145	147	1,047
Eating disorders team				0	0	0	0	0	0	0	0	0	1	0	0	0	0	0	34
Forensic team	4%			0	1	0	0	1	0	0	1	0	0	0	0	3	0	0	37
Inpatient team	1%		3%	1	4	1	5	6	1	1	2	1	7	1	3	36	11	10	296
Specialty team	1%		0%	0	0	0	0	3	1	1	0	0	2	0	0	5	0	0	230
Total	13%	17%	7%	92	106	109	151	197	113	108	124	103	163	110	146	312	158	159	1,653

Notes: Percentage of invalid collections = the percentage of collections that had three or more of the 15 items scored as unknown or missing. Number of invalid ratings by HoNOSCA item = for each of the HoNOSCA items, the number of collections for which that item was unknown or missing. Discharge excludes collection types for lost to care, deceased and brief episode of care. Collection in drug and alcohol teams is not required, therefore AOD data is excluded.

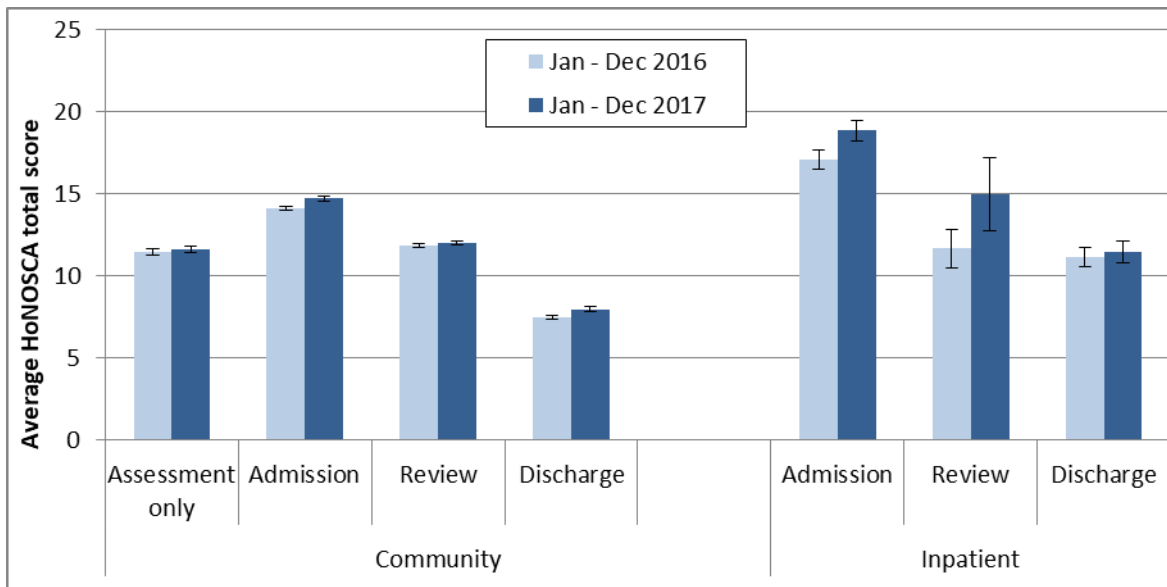
Interpretation: The lower the percentages of invalid collections by team, the higher the percentage of valid scores. The lower the number of invalid collections by HoNOSCA item, the more collections that have valid data on that HoNOSCA item.

Target: Aim for 95% valid collections (5% invalid collections) or better. Aim for as few invalid items as possible, with all items having a similar validity rate.

2. Outcomes - changes in service user status

This section presents HoNOSCA data indicating the status of service users at different stages of their contact with the DHB mental health services. Graph and Table 4 show results from HoNOSCA total scores. Graphs and Tables 5 to 7b show results related to the percentage of HoNOSCA items in the clinical range. Graph and Table 8 in this section show results from the Index of Severity derived from HoNOSCA scores.

Graph 4: Average HoNOSCA total score (15 items) by collection type, New Zealand, Jan - Dec 2016 and Jan - Dec 2017



Notes: Error bars indicate the confidence intervals around the data point. If error bars overlap, the data points are not significantly different. Community discharge does not include discharge to an inpatient unit.

Interpretation: Decrease between admission and discharge is an indication of the outcomes achieved by the service user and service. The greater the decrease between admission and discharge, and the lower the average HoNOSCA score at discharge, the more positive the outcome.

Target: A greater decrease from admission to discharge and lower average rating at discharge.

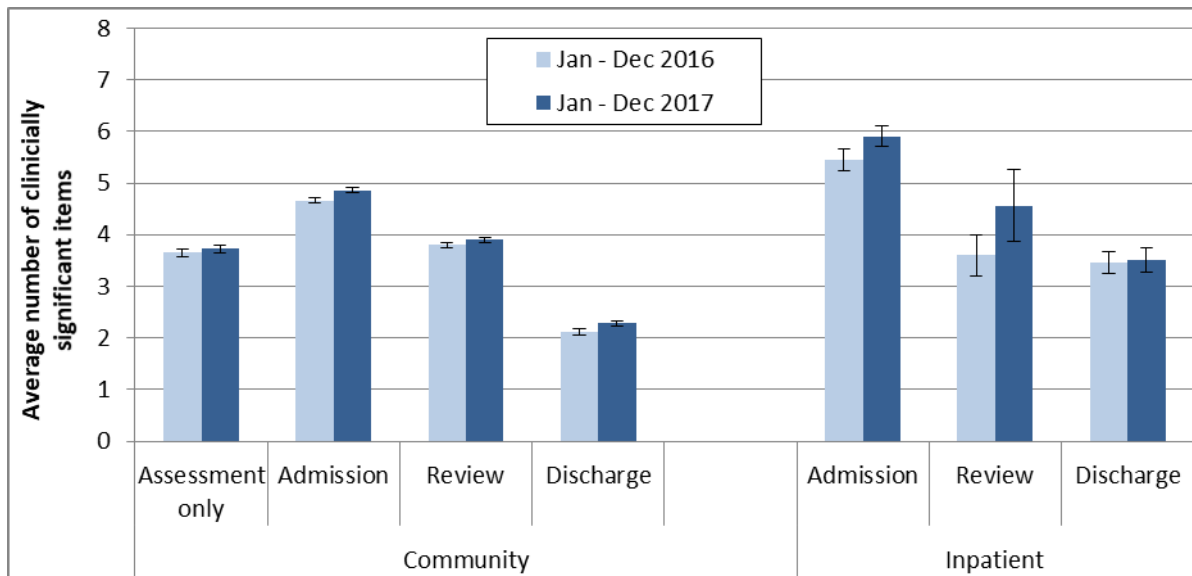
Table 4: Average HoNOSCA total score (15 items), by collection type and team, New Zealand, Jan - Dec 2017

Team type	Assessment only			Admission			Review			Discharge		
	N	Mean	CI	N	Mean	CI	N	Mean	CI	N	Mean	CI
Community services												
Alcohol and drug team				126	12.7	11.4-14.0	107	12.2	10.8-13.5	116	8.9	7.6-10.1
Child and youth team	3,693	11.2	11.0-11.4	7,750	14.8	14.7-15.0	9,684	12.1	12.0-12.2	5,991	7.9	7.8-8.1
Co-existing problem team							30	11.9	8.6-15.3	39	7.5	5.0-10.1
Community team	269	12.0	11.2-12.8	154	13.5	12.5-14.4	70	8.8	7.4-10.1	49	6.9	4.7-9.1
Eating disorders team	22	10.6	7.4-13.7	122	15.5	14.2-16.7	208	9.9	9.0-10.9	76	6.2	4.7-7.6
Forensic team	216	17.0	15.9-18.1	134	16.2	14.8-17.7	23	13.0	9.8-16.1	30	15.3	12.5-18.0
Kaupapa Māori team	74	9.8	8.3-11.4	192	13.8	12.8-14.9	445	13.0	12.4-13.7	122	8.1	6.9-9.3
Pacific people team				32	13.2	10.9-15.5	56	11.3	9.6-12.9	69	6.6	5.2-7.9
Specialty team	139	13.1	12.0-14.2	441	13.7	13.1-14.3	795	11.3	10.9-11.8	581	8.5	7.9-9.0
Total	4,447	11.6	11.4-11.8	8,965	14.7	14.6-14.8	11,419	12.0	11.9-12.2	7,073	8.0	7.8-8.1
Inpatient services												
Child and youth team				471	19.8	18.9-20.7	99	15.0	12.5-17.5	305	12.9	12.0-13.8
Eating disorders team										17	9.6	6.2-13.0
Forensic team				23	26.3	22.3-30.3						
Inpatient team				175	17.9	16.8-19.0				117	13.1	11.6-14.6
Specialty team				117	15.8	14.6-17.0				107	6.0	5.2-6.9
Total				807	18.8	18.2-19.5	114	15.0	12.7-17.2	555	11.5	10.8-12.1

Notes: N = number of collections in period. Average = average HoNOSCA (15 item) score, CI = confidence interval for average score. Community discharge does not include discharge to an inpatient unit.

Interpretation: If confidence intervals for two scores do not overlap, then the scores are statistically significantly different. It is important to note that statistical significance may not indicate a clinically significant difference.

Graph 5: Average number of clinically significant HoNOSCA items by collection type, New Zealand, Jan - Dec 2016 and Jan - Dec 2017



Notes: Average number clinically significant items = the average number of items in the clinical range (2, 3 or 4) per collection. Community discharge does not include discharge to an inpatient unit.

Interpretation: Points are significantly different if error bars don't overlap. Decrease between admission and discharge is an indication of the outcomes achieved by the service and service user. A greater decrease between admission and discharge indicates a better outcome. A lower admission score could be indication of service users seeking out and being engaged by services at a lower level of severity.

Target: A greater decrease from admission to discharge and smaller percentage in clinical range at discharge.

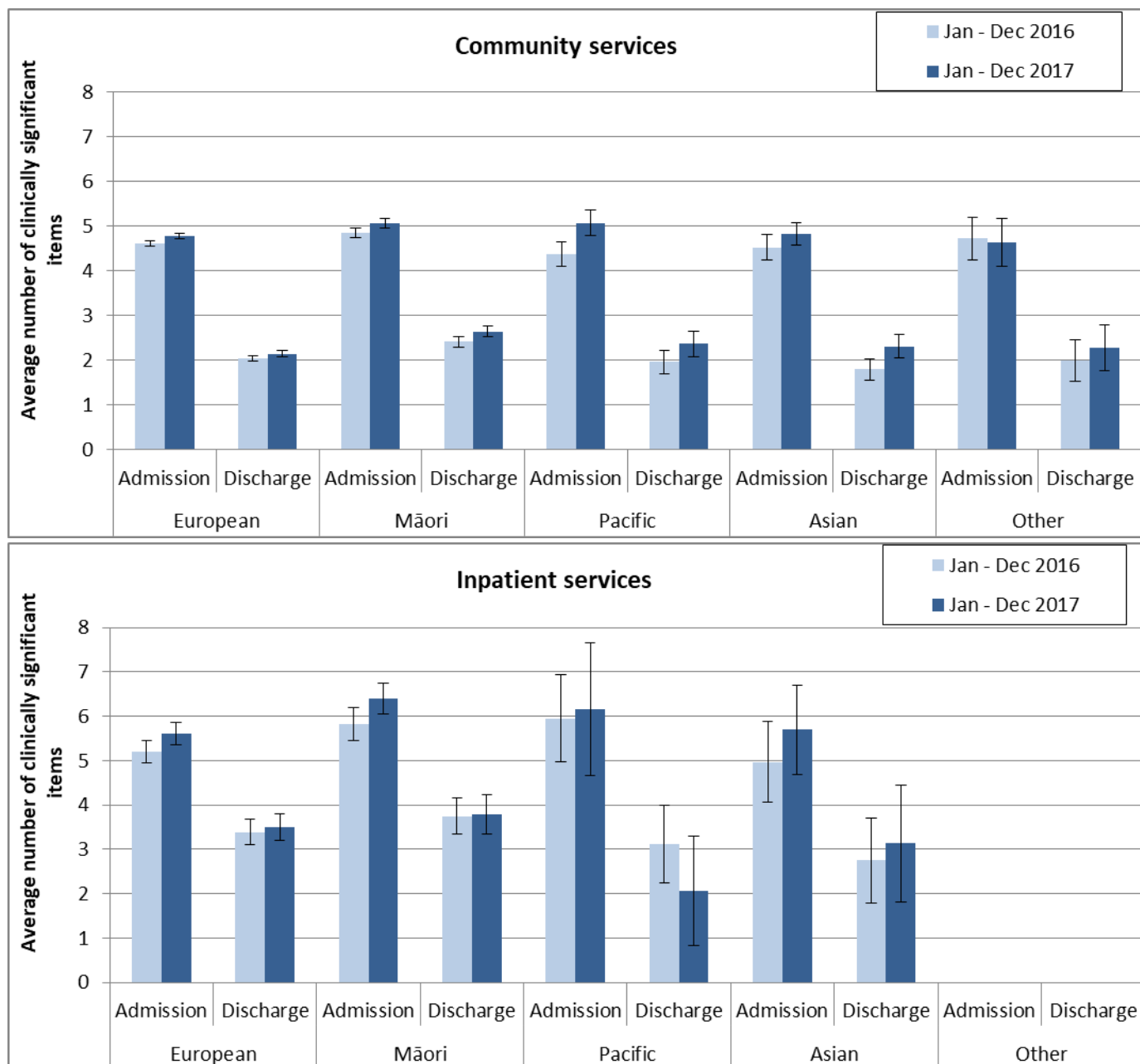
Table 5: Average number of clinically significant HoNOSCA items by collection type and team, New Zealand, Jan - Dec 2017

Team type	Assessment only			Admission			Review			Discharge		
	N	Mean	CI	N	Mean	CI	N	Mean	CI	N	Mean	CI
Community services												
Alcohol and drug team				126	4.2	3.7-4.7	107	3.7	3.2-4.2	116	2.7	2.2-3.1
Child and youth team	3,693	3.6	3.6-3.7	7,750	4.9	4.8-5.0	9,684	3.9	3.9-4.0	5,991	2.3	2.2-2.3
Co-existing problem team							30	3.9	2.8-4.9	39	2.6	1.7-3.4
Community team	269	3.8	3.5-4.1	154	4.3	3.9-4.6	70	2.5	2.0-3.0	49	1.9	1.1-2.6
Eating disorders team	22	3.4	2.2-4.6	122	5.3	4.8-5.8	208	3.3	3.0-3.7	76	1.8	1.2-2.3
Forensic team	216	5.3	4.9-5.6	134	5.3	4.8-5.9	23	4.0	2.8-5.2	30	4.9	3.7-6.1
Kaupapa Māori team	74	2.9	2.3-3.5	192	4.4	4.1-4.8	445	4.1	3.8-4.3	122	1.9	1.5-2.3
Pacific people team				32	4.4	3.5-5.3	56	3.7	3.1-4.3	69	1.8	1.3-2.3
Specialty team	139	4.4	4.0-4.9	441	4.5	4.3-4.7	795	3.7	3.5-3.9	581	2.3	2.1-2.5
Total	4,447	3.7	3.7-3.8	8,965	4.9	4.8-4.9	11,419	3.9	3.8-3.9	7,073	2.3	2.2-2.3
Inpatient services												
Child and youth team				471	6.1	5.9-6.4	99	4.6	3.8-5.4	305	3.9	3.6-4.3
Forensic team				23	8.4	7.1-9.7						
Inpatient team				175	5.8	5.4-6.2				117	4.1	3.5-4.6
Specialty team				117	4.9	4.5-5.4				107	1.7	1.4-2.1
Total				807	5.9	5.7-6.1	114	4.6	3.9-5.3	555	3.5	3.3-3.8

Notes: N = number of collections in period. Average = average number of HoNOSCA items in the clinically significant range (ie scoring 2, 3, or 4), CI = confidence interval for average score. Community discharge does not include discharge to an inpatient unit.

Interpretation: If confidence intervals for two scores do not overlap, then the scores are statistically significantly different. Please note that statistical significance may not indicate a clinically significant difference.

Graph 6: Average number of clinically significant HoNOSCA items at admission and discharge by ethnic group, New Zealand, Jan - Dec 2016 and Jan - Dec 2017

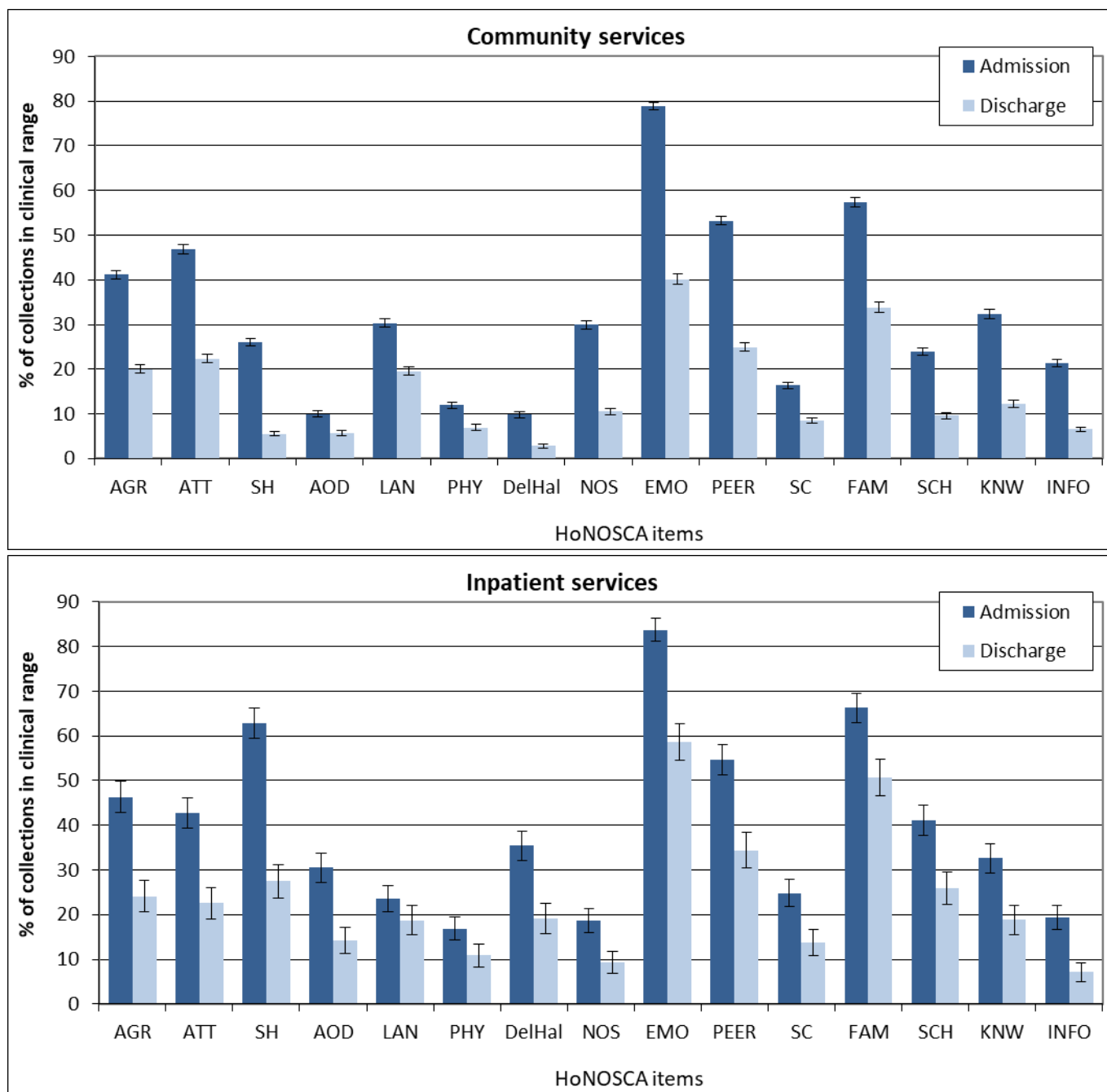


Notes: Average number of HoNOSCA items in the clinical range (2, 3 or 4). Community discharge does not include discharge to an inpatient unit.

Interpretation: Points are significantly different if error bars don't overlap. Decrease between admission and discharge is an indication of the outcomes achieved by the service and service user. A greater decrease between admission and discharge indicates a better outcome. A lower admission score could be indication of service users seeking out and being engaged by services at a lower level of acuity.

Target: A greater decrease from admission to discharge and smaller percentage in clinical range at discharge.

Graph 7a: Percentage of collections in clinical range on each HoNOSCA item, New Zealand, Jan - Dec 2017



Notes: Percentage of service users in the clinical range (2, 3 or 4) for each HoNOSCA item. Community discharge does not include discharge to an inpatient unit.

Interpretation: The longer the bar, the more prevalent the difficulty measured by the item is amongst service users. A greater decrease in the length of the bar from admission to discharge suggests a better outcome for the difficulty measured by the item. Items that show medium to high frequency and less change may suggest possible targets for service improvement.

Target: A greater decrease from admission to discharge and smaller percentage in clinical range at discharge.

Table 7a: Percentage of collections in clinical range on each HoNOSCA item (admission and discharge collections) by team, New Zealand, Jan - Dec 2017

Community services

First 7 HoNOSCA items																
Team name	N		AGR		ATT		SH		AOD		LAN		PHY		DelHal	
	Adm	Disch	Adm	Disch	Adm	Disch	Adm	Disch	Adm	Disch	Adm	Disch	Adm	Disch	Adm	Disch
Alcohol and drug team	126	116	42%	29%	23%	11%	17%	7%	70%	51%	14%	10%	6%	4%	9%	3%
Child and youth team	7,746	5,981	42%	20%	48%	23%	26%	5%	8%	4%	32%	21%	12%	7%	9%	2%
Co-existing problem team		39		23%		13%		8%		44%		5%		3%		3%
Community team	154	49	35%	16%	28%	14%	55%	8%	25%	15%	12%	12%	6%	4%	14%	8%
Eating disorders team	122	76	15%	4%	31%	5%	24%	9%	5%	0%	11%	4%	55%	17%	66%	24%
Forensic team	134	30	55%	43%	49%	40%	18%	3%	43%	27%	34%	24%	2%	7%	8%	17%
Kaupapa Māori team	192	122	41%	20%	46%	7%	25%	4%	13%	10%	30%	11%	9%	5%	8%	1%
Pacific people team	32	69	28%	20%	31%	16%	25%	1%	14%	4%	31%	24%	3%	1%	13%	3%
Specialty team	441	581	26%	15%	43%	19%	29%	10%	10%	8%	25%	11%	13%	7%	10%	4%
Total	8,961	7,062	41%	20%	47%	22%	26%	6%	10%	6%	30%	20%	12%	7%	10%	3%
Second 8 HoNOSCA items																
Team name	NOS		EMO		PEER		SC		FAM		SCH		KNW		INFO	
	Adm	Disch	Adm	Disch	Adm	Disch	Adm	Disch	Adm	Disch	Adm	Disch	Adm	Disch	Adm	Disch
Alcohol and drug team	12%	2%	48%	33%	26%	16%	9%	7%	48%	35%	31%	23%	37%	23%	34%	19%
Child and youth team	31%	11%	80%	41%	55%	25%	17%	9%	58%	34%	23%	9%	32%	12%	21%	6%
Co-existing problem team		0%		31%		26%		5%		36%		10%		28%		23%
Community team	16%	4%	82%	24%	42%	12%	8%	4%	63%	35%	16%	15%	20%	13%	13%	2%
Eating disorders team	31%	8%	87%	39%	39%	11%	48%	14%	58%	30%	17%	5%	30%	5%	17%	0%
Forensic team	18%	23%	57%	57%	56%	57%	12%	7%	67%	79%	34%	26%	50%	45%	45%	48%
Kaupapa Māori team	20%	3%	63%	17%	49%	25%	11%	5%	53%	32%	37%	17%	29%	20%	17%	14%
Pacific people team	6%	1%	71%	20%	39%	18%	3%	1%	71%	23%	38%	15%	44%	16%	38%	13%
Specialty team	27%	12%	79%	43%	48%	28%	13%	7%	46%	34%	30%	15%	31%	12%	20%	6%
Total	30%	11%	79%	40%	53%	25%	16%	9%	57%	34%	24%	10%	32%	12%	21%	7%

Inpatient services

First 7 HoNOSCA items																
Team name	N		AGR		ATT		SH		AOD		LAN		PHY		DelHal	
	Adm	Disch	Adm	Disch	Adm	Disch	Adm	Disch	Adm	Disch	Adm	Disch	Adm	Disch	Adm	Disch
Child and youth team	471	305	47%	26%	46%	28%	66%	35%	27%	13%	29%	27%	18%	10%	33%	21%
Forensic team	23		74%		70%		22%		61%		48%		22%		83%	
Inpatient team	175	117	58%	35%	45%	24%	62%	26%	40%	28%	15%	14%	11%	11%	34%	25%
Specialty team	117	107	25%	8%	25%	5%	67%	13%	28%	7%	13%	4%	8%	4%	40%	8%
Total	807	555	46%	24%	43%	23%	63%	27%	30%	14%	23%	19%	17%	11%	35%	19%

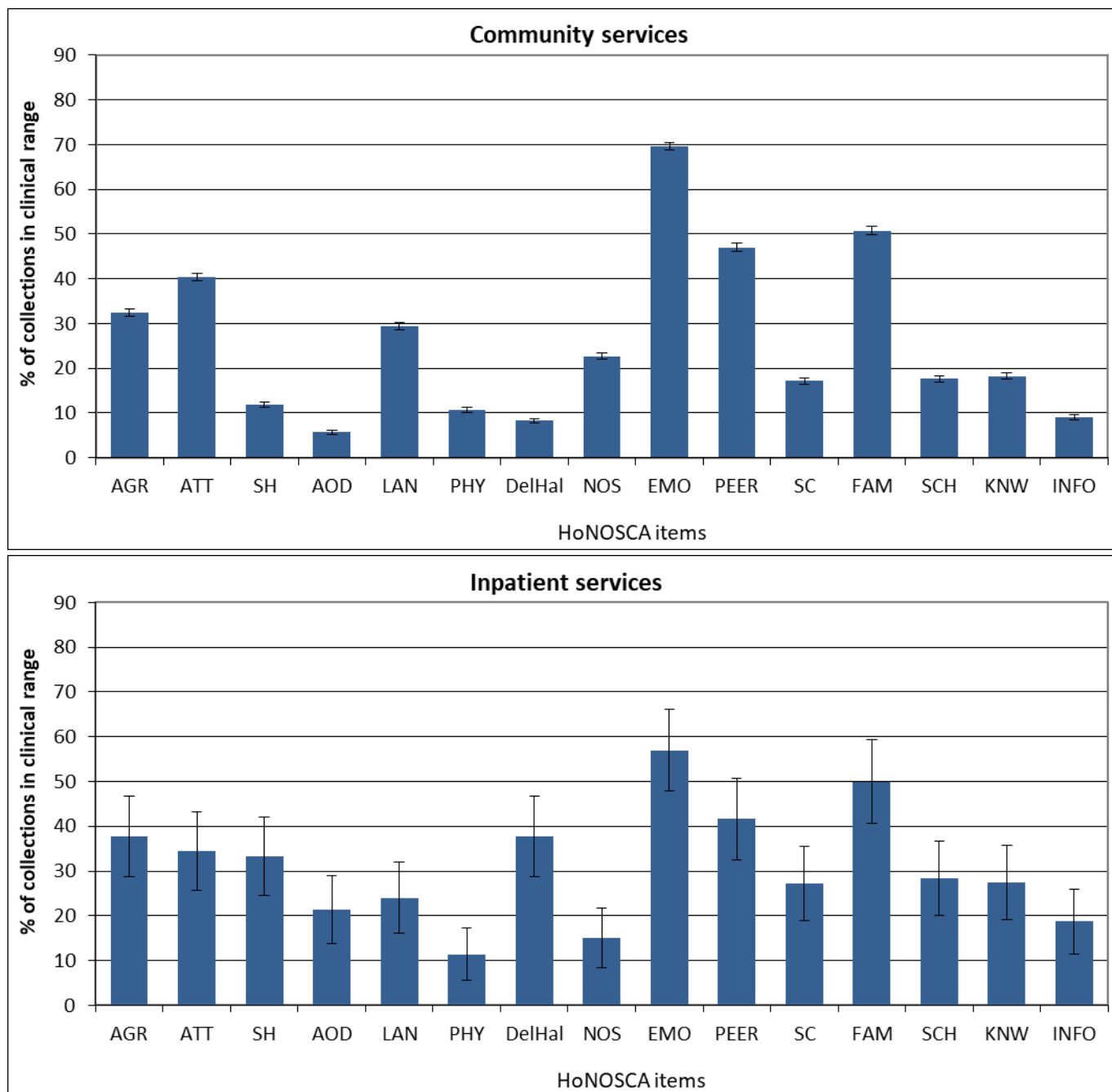
Second 8 HoNOSCA items																
Team name	NOS		EMO		PEER		SC		FAM		SCH		KNW		INFO	
	Adm	Disch	Adm	Disch	Adm	Disch	Adm	Disch	Adm	Disch	Adm	Disch	Adm	Disch	Adm	Disch
Child and youth team	20%	11%	83%	64%	59%	39%	29%	17%	67%	55%	47%	33%	35%	18%	19%	5%
Forensic team	9%		70%		65%		43%		78%		81%		65%		57%	
Inpatient team	14%	10%	85%	59%	57%	45%	20%	12%	67%	56%	32%	25%	29%	30%	17%	12%
Specialty team	21%	7%	87%	45%	37%	11%	10%	5%	62%	36%	28%	9%	24%	7%	20%	6%
Total	19%	9%	84%	59%	55%	34%	25%	14%	66%	51%	41%	26%	33%	19%	19%	7%

Notes: Percentage of service users in the clinical range (2, 3 or 4) for each HoNOSCA item. Community discharge does not include discharge to an inpatient unit.

Interpretation: The higher the percentage, the more prevalent the difficulty measured by the item is amongst service users. A greater decrease between admission to discharge suggests a better outcome for the difficulty measured by the item. Items that show medium to high frequency and less change may suggest possible targets for service improvement.

Target: A greater decrease from admission to discharge and smaller percentage in clinical range at discharge.

Graph 7b: Percentage of collections in clinical range on each HoNOSCA item (review collections), New Zealand, Jan - Dec 2017



Notes: Percentage of service users in the clinical range (2, 3 or 4) for each HoNOSCA item on review collections. Due to most admission being less than 91 days, the data set for review collections in inpatient settings is relatively small.

Interpretation: The longer the bar, the more prevalent the difficulty measured by the item is amongst service users.

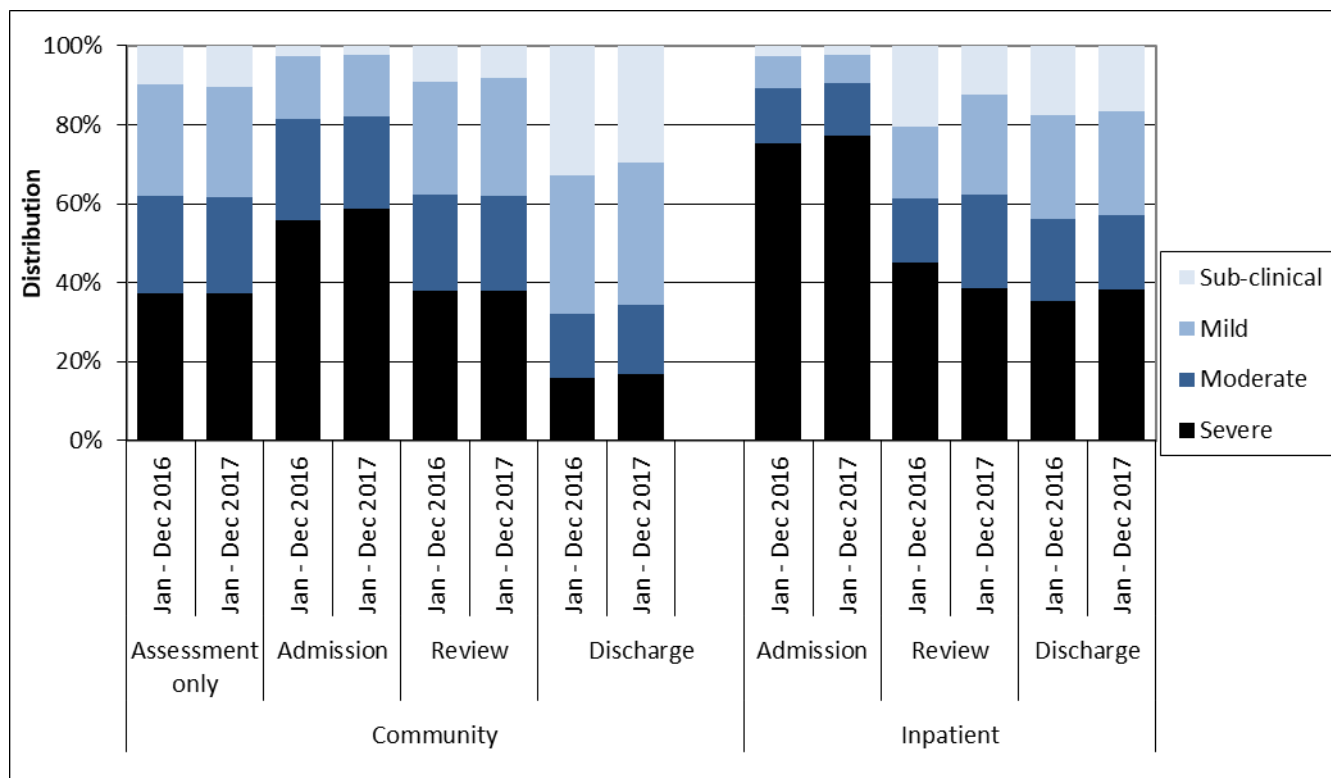
Table 7b: Percentage of collections in clinical range on each HoNOSCA item (review collections) by team, New Zealand, Jan - Dec 2017

Team type	N	AGR	ATT	SH	AOD	LAN	PHY	DelHal	NOS	EMO	PEER	SC	FAM	SCH	KNW	INFO
Community services																
Alcohol and drug team	107	36%	16%	6%	42%	20%	13%	8%	13%	64%	30%	13%	49%	28%	24%	13%
Child and youth team	9,677	34%	42%	11%	5%	31%	10%	7%	23%	70%	48%	18%	51%	17%	18%	8%
Co-existing problem team	30	47%	30%	7%	63%	11%	3%	13%	10%	63%	27%	17%	40%	21%	28%	10%
Community team	70	19%	13%	14%	22%	10%	9%	19%	7%	47%	23%	7%	37%	15%	4%	4%
Eating disorders team	208	7%	17%	14%	2%	5%	34%	53%	19%	66%	25%	25%	46%	10%	10%	1%
Forensic team	23	48%	57%	13%	9%	36%	0%	4%	13%	52%	39%	0%	68%	17%	29%	35%
Kaupapa Māori team	445	41%	38%	9%	9%	32%	8%	6%	16%	60%	49%	13%	52%	20%	32%	25%
Pacific people team	56	36%	46%	13%	2%	43%	5%	4%	5%	59%	42%	7%	41%	23%	25%	23%
Specialty team	795	18%	35%	19%	8%	19%	11%	7%	25%	73%	46%	15%	45%	23%	20%	11%
Total	11,411	32%	40%	12%	6%	29%	11%	8%	23%	70%	47%	17%	51%	18%	18%	9%
Inpatient services																
Child and youth team	99	38%	33%	36%	25%	21%	12%	35%	13%	57%	42%	28%	51%	28%	30%	21%
Total	114	38%	35%	33%	21%	24%	11%	38%	15%	57%	42%	27%	50%	28%	27%	19%

Notes: Percentage of service users in the clinical range (2, 3 or 4) for each HoNOSCA item on review collections. Due to most admission being less than 91 days, the data set for review collections in inpatient settings is relatively small.

Interpretation: The higher the percentage, the more prevalent the difficulty measured by the item is amongst service users.

Graph 8: Index of severity ratings for HoNOSCA by collection type, New Zealand, Jan - Dec 2016 and Jan - Dec 2017



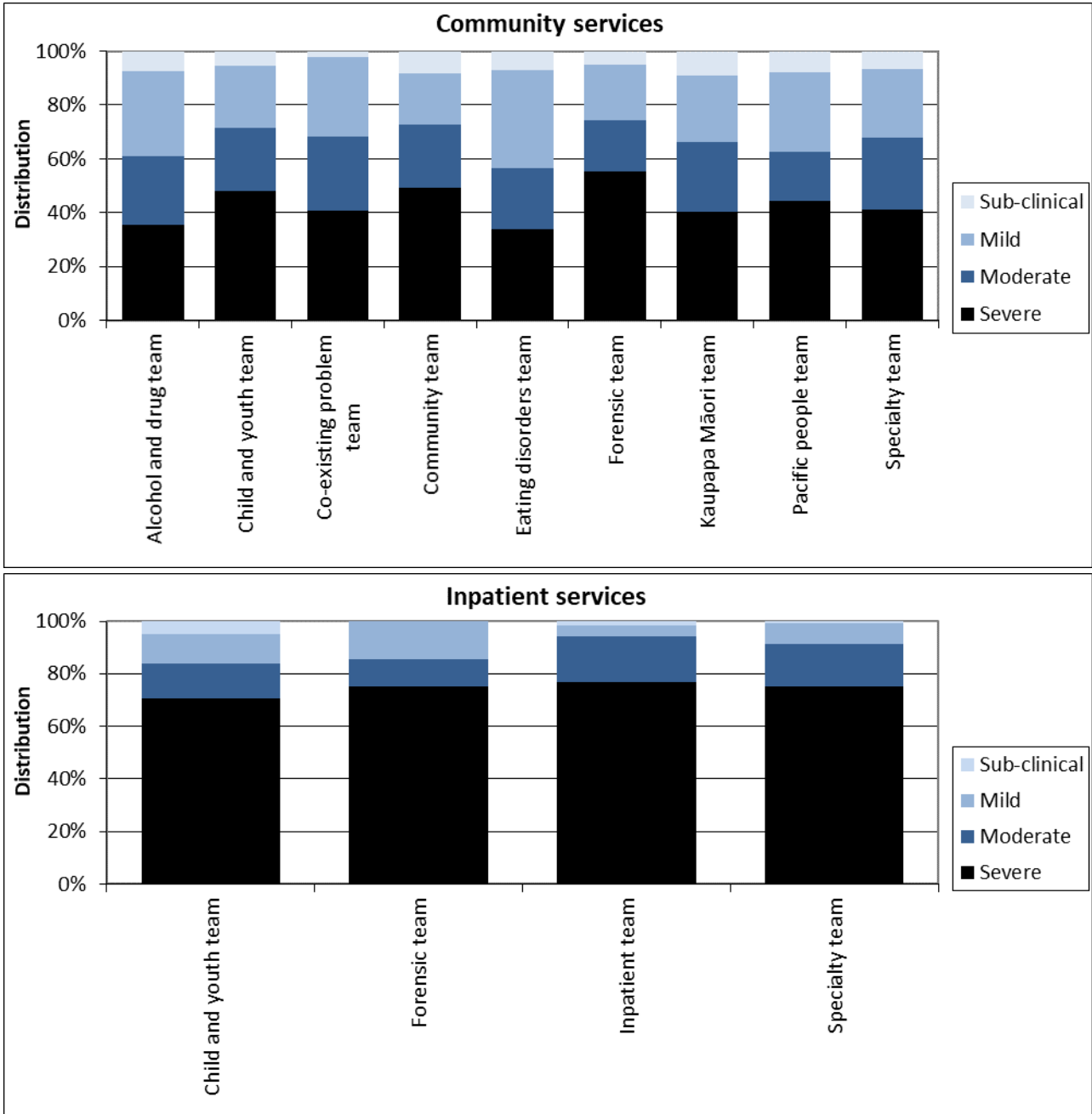
Notes: Community discharge does not include discharge to an inpatient unit. Index of Severity: Sub clinical = all items <2, mild = at least one item >1 and all items <3, moderate = at least one item >=3, severe = at least 2 items >=3 using first 13 items. Community discharge does not include discharge to an inpatient unit.

Interpretation: Darker bars indicate higher overall level of severity. More positive outcome shown by larger decrease in darker sections of bar between admission and discharge.

3. Other measures of service activity

This section presents other information related to data collected in PRIMHD that may be helpful for understanding how teams are operating. This includes information relevant to caseload intensity and team activity.

Graph 9: Index of severity for HoNOSCA (admission and review collections) by team, New Zealand, Jan - Dec 2017



Notes: Only data related to collection at admission and review is included so that results reflect the severity of service users during their engagement with the service. Index of Severity: Sub clinical = all items <2, mild = at least one item >1 and all items <3, moderate = at least one item >=3, severe = at least 2 items >=3 using first 13 items.

Interpretation: This graph gives an impression of the overall severity of the caseload for different teams at admission. The longer the darker bar, the higher the overall severity of the team’s caseload.

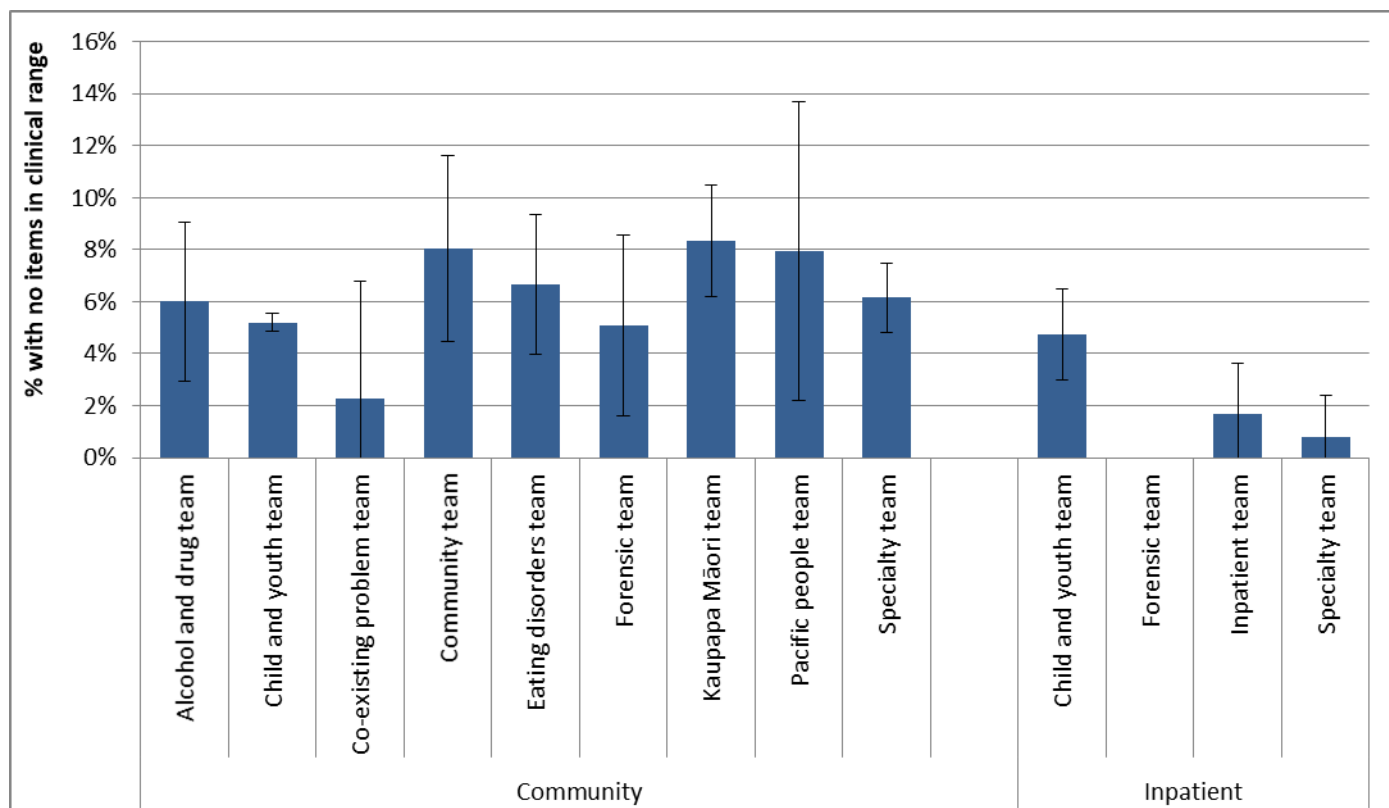
Table 9: Index of severity for HoNOSCA by collection type and team, New Zealand, Jan - Dec 2017

Team type	Assessment only					Admission					Review					Discharge				
	Sub	Mild	Mod	Sev	N	Sub	Mild	Mod	Sev	N	Sub	Mild	Mod	Sev	N	Sub	Mild	Mod	Sev	N
Community services																				
Alcohol and drug team						7%	31%	29%	33%	126	7%	33%	21%	38%	107	28%	29%	15%	28%	116
Child and youth team	11%	30%	25%	34%	3,693	2%	15%	23%	60%	7,750	8%	30%	24%	39%	9,684	29%	37%	18%	16%	5,991
Co-existing problem team											0%	33%	27%	40%	30	28%	38%	10%	23%	39
Community team	6%	19%	22%	52%	269	3%	12%	23%	62%	154	21%	33%	24%	21%	70	43%	31%	8%	18%	49
Eating disorders team	14%	27%	23%	36%	22	1%	18%	29%	52%	122	11%	48%	19%	23%	208	45%	34%	16%	5%	76
Forensic team	1%	10%	19%	70%	216	4%	20%	19%	56%	134	9%	22%	17%	52%	23	10%	13%	40%	37%	30
Kaupapa Māori team	18%	32%	26%	24%	74	4%	22%	26%	48%	192	12%	26%	26%	37%	445	44%	30%	13%	12%	122
Pacific people team						6%	22%	19%	53%	32	9%	34%	18%	39%	56	42%	30%	17%	10%	69
Specialty team	9%	20%	24%	46%	139	2%	20%	27%	51%	441	9%	29%	27%	35%	795	35%	29%	15%	21%	581
Total	10%	28%	25%	37%	4,447	2%	16%	23%	59%	8,965	8%	30%	24%	38%	11,419	30%	36%	18%	17%	7,073
Inpatient services																				
Child and youth team						3%	8%	12%	77%	471	14%	24%	21%	40%	99	11%	24%	21%	44%	305
Forensic team						0%	0%	13%	87%	23										
Inpatient team						2%	4%	18%	77%	175						16%	20%	20%	44%	117
Specialty team						1%	8%	14%	78%	117						34%	37%	11%	18%	107
Total						2%	7%	13%	77%	807	12%	25%	24%	39%	114	17%	26%	19%	38%	555

Notes: Sub = sub clinical, Mild = mild, Mod = moderate, Sev = severe on Index of Severity. Only admission collection data is included so that results reflect the severity of service users during their engagement with the service. Index of Severity: Sub clinical = all items <2, mild = at least one item >1 and all items <3, moderate = at least one item >=3, severe = at least 2 items >=3 using first 13 items. Community discharge does not include discharge to an inpatient unit.

Interpretation: Larger percentages in the columns to the right for each type of collection, the higher the overall severity of the team's caseload.

Graph 10: Collections with no HoNOSCA items in clinical range, New Zealand, Jan - Dec 2017



Notes: Includes admission and review collections. Shows percentage of service users with all HoNOSCA items less than two, ie no HoNOSCA items in the clinical range.

Interpretation: There are a variety of reasons that may make it appropriate for service users to remain in the service even though they show no HoNOSCA items in the clinical range. However, teams showing a larger or substantial percentage of service users with no HoNOSCA items in the clinical range could benefit from reviewing these cases to ensure that the service remains appropriate for this service user.

Table 10: Collections with no HoNOSCA items in clinical range, New Zealand, Jan - Dec 2017

Team type	Number of collections with no items in clinical range	Percentage with no items in clinical range
Community services		
Alcohol and drug team	14	6%
Child and youth team	907	5%
Co-existing problem team	1	2%
Community team	18	8%
Eating disorders team	22	7%
Forensic team	8	5%
Kaupapa Māori team	53	8%
Pacific people team	7	8%
Specialty team	76	6%
Total	1,106	5%
Inpatient services		
Child and youth team	27	5%
Forensic team	0	0%
Inpatient team	3	2%
Specialty team	1	1%
Total	31	3%

Notes: For further information see notes for Graph 10.