

PRIMHD Summary Report - HoNOSCA

Health of the Nation Outcomes Scales – Child and youth report for New Zealand



This report summarises national Programme for the Integration of Mental Health Data (PRIMHD) data submitted by district health boards (DHBs). In particular, it presents Health of the National Outcomes Scale Child and Adolescent aged 4 to 17 (HoNOSCA) data, from services where HoNOSCA is the primary measure.

This report is organised into three major sections that provide information about:

1. **Collection completion and validity:** This details the completeness of the data set provided by your mental health services. This is important because it indicates how valid and reliable the data sets are likely to be. The less complete the data set, the less valid the information is likely to be.
2. **Outcomes related information:** This provides indications about what changes have occurred for service users between entering and leaving the service. Outcome is assessed by comparing the group admitted and the group discharged from the service in the same time period. This should provide a reasonable indication of outcomes achieved unless the service user mix has changed significantly over the usual period for which service is delivered.
3. **Service related information:** This provides information about the services, such as the overall severity of service users who use different services.

In many cases the data is presented graphically for New Zealand, and then presented as a table for the individual team types (see team type classification factsheet).

The time period covered differs for the different data presented. See the title or the notes under the graphs or tables for information about the time period covered. Unless otherwise stated, the notes under the graphs also apply to the corresponding table.

For all graphs and tables, if there are less than twenty cases in the data set, then the information is not presented. This is because small samples frequently provide inaccurate and potentially misleading results. See the notes and user guide for other important information about the graphs and tables.

Where appropriate, the statistical **confidence interval** is presented. This is shown by error bars (small lines above and below the average) on the graphs, and a score range in some tables. As a rule of thumb, if the confidence intervals of two data points do not overlap, the two points can be considered to be significantly different. If the confidence intervals of the data points do overlap, we assume the points are not significantly different. It is important to note that statistical significance may not indicate a clinically significant difference. **See the associated user guide for more information** about how to understand and use the data presented in this report.

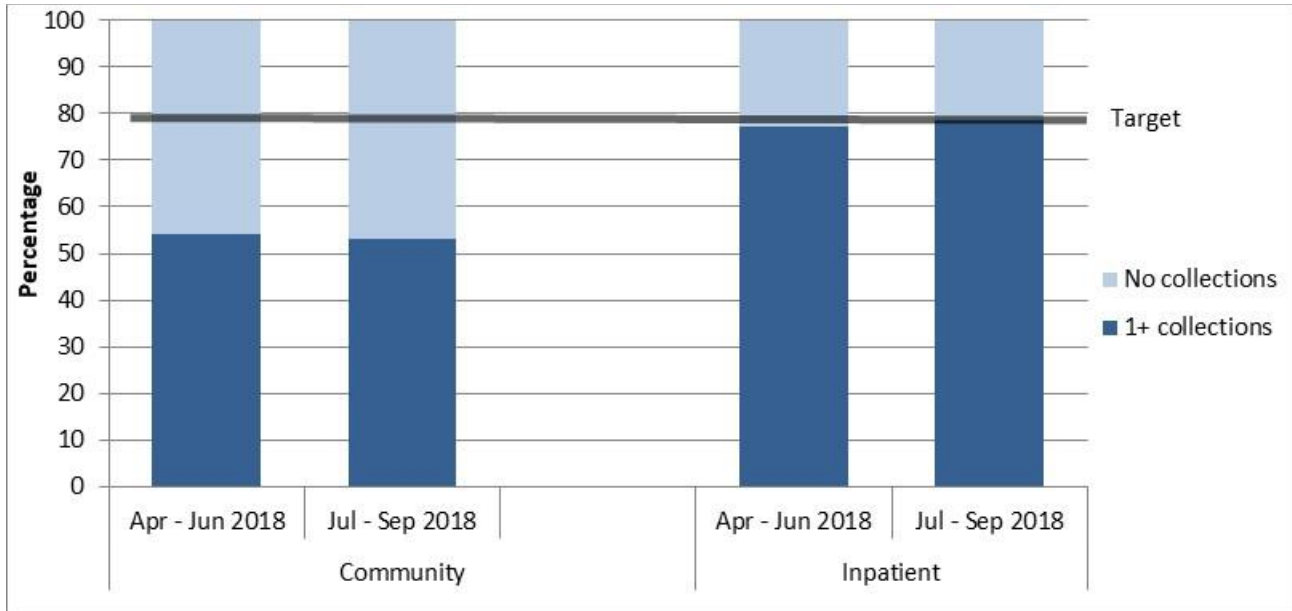
Data for graphs 1 and 2 was extracted 8 January 2019 from PRIMHD by the Ministry of Health and formatted by Te Pou. The data for graphs and tables 3 to 12 was extracted 7 January 2019 from PRIMHD by the Ministry of Health, then analysed and formatted by Te Pou.

Please note: For this period a few DHBs have incomplete data which will affect New Zealand totals.

1. Collection completion and validity

This section presents information about the completeness and validity of the data on which the remainder of this report is based. It also shows the current targets for the variables presented.

Graph 1: Percentage of service users with at least one collection during the period, New Zealand, Apr – Jun 2018 and Jul – Sep 2018 (4 to 17 years)

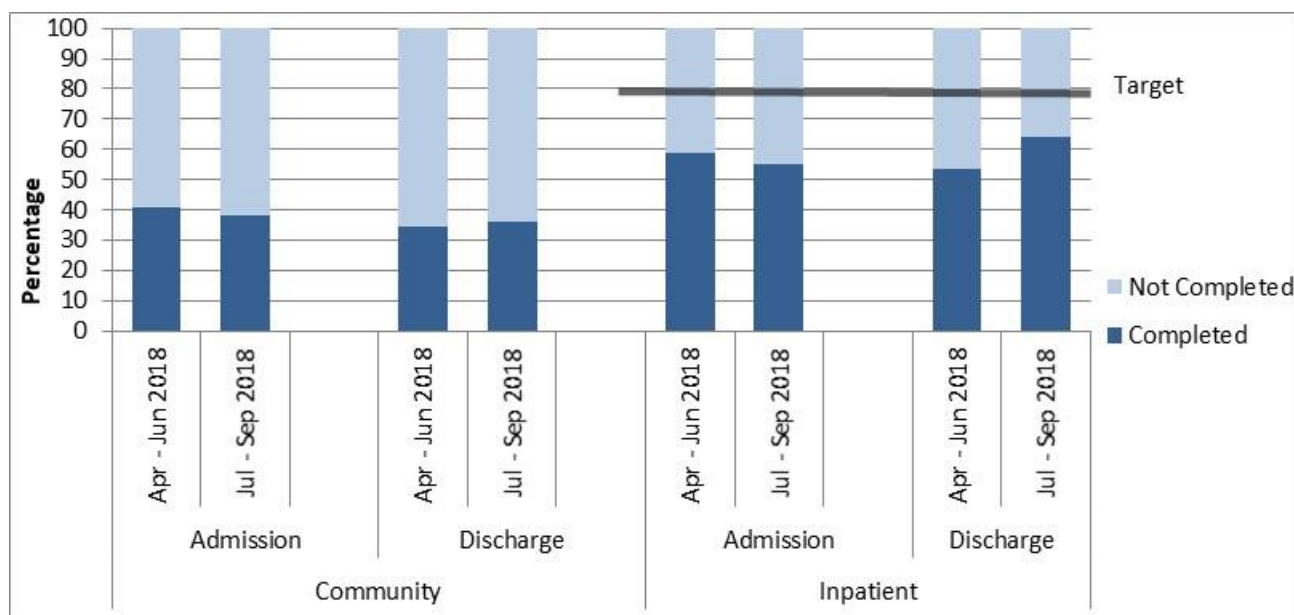


Notes: Community compliance is affected by crisis teams completing triage or brief assessment type activity which is not a comprehensive assessment.

Interpretation: The longer the dark part of the bar, the more completely the data set includes all service users, and the more meaningful and representative the graphs, tables, and analyses using these data will be. Data is approximate due to movements of service users between teams and similar variations; however, it does provide a reasonably accurate representation of completion of measures. Only data with valid collections is included.

Target: To meet or exceed the target shown on the graph for the percentage of service users with at least one collection within the period.

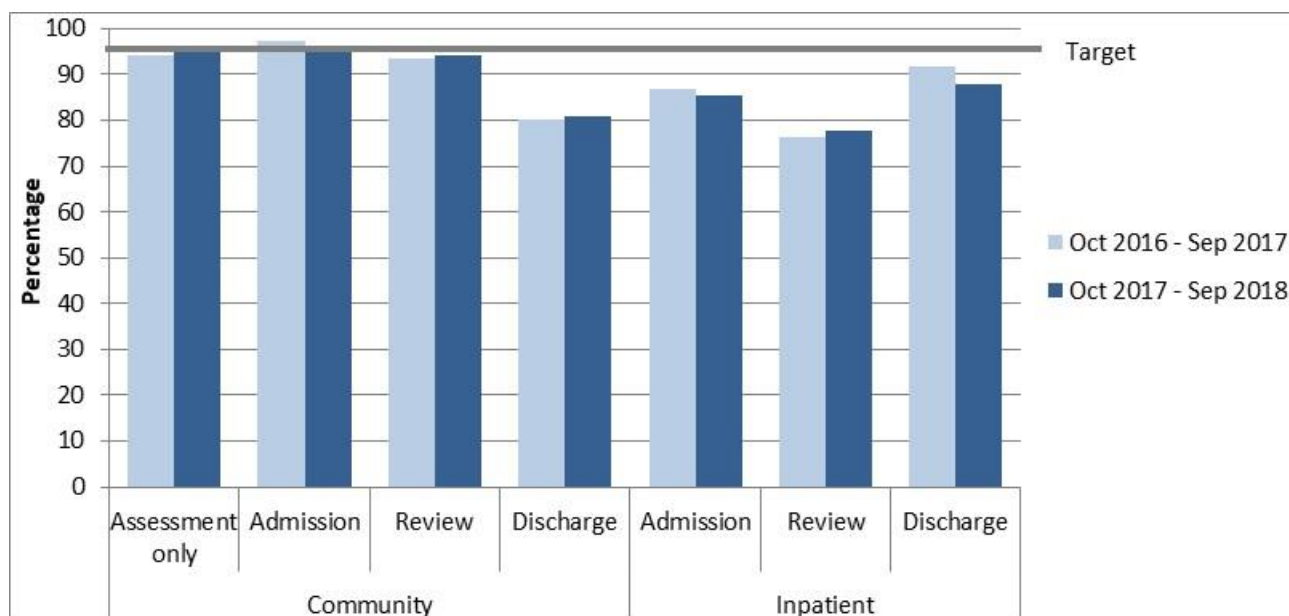
Graph 2: Percentage of service users with admission and discharge collections completed, New Zealand, Apr – Jun 2018 and Jul – Sep 2018 (4 to 17 years)



Notes: Community compliance is affected by crisis teams completing triage or brief assessment type activity which is not a comprehensive assessment.

Interpretation: The longer the dark bar, the larger the percentage of admission and discharge that had the relevant data collection type. Data is approximate due to movements of service users between teams and similar variations; however, it does provide a reasonably accurate representation of completion of measures. Only data with valid collections is included.

Graph 3: Percentage of valid collections, HoNOSCA, New Zealand, Oct 2016 - Sep 2017 and Oct 2017 - Sep 2018



Notes: Valid = Two or fewer of the 15 items scored as unknown or missing. Discharge excludes collection types for lost to care, discharge dead and brief episode of care. Collection in drug and alcohol teams is not required, therefore AOD data is excluded.

Interpretation: The longer the dark lines, the higher the percentage of valid scores.

Target: Aim for 95% valid collections.

Table 3: Invalid collections by team, by HoNOSCA item, New Zealand, Oct 2017 - Sep 2018

Team type	% Invalid			Number of invalid ratings by HoNOSCA item															Total number
	Adm	Rev	Dch	1	2	3	4	5	6	7	8	9	10	11	12	13	14	15	
Community services																			
Child and youth team	3%	6%	16%	2,017	2,087	2,104	2,304	2,408	2,088	2,127	2,121	2,042	2,140	2,097	2,062	2,506	2,167	2,180	28,352
Community team	9%	8%	36%	52	55	53	60	66	55	56	57	52	59	53	55	83	77	77	549
Eating disorders team	6%	12%	27%	9	10	10	12	17	10	10	10	10	11	10	10	17	11	11	88
Early intervention team	0%	1%	18%	25	25	28	32	26	25	25	27	25	27	25	25	29	28	28	642
Forensic team	5%	9%	20%	42	42	44	68	99	46	46	47	43	54	45	83	109	198	199	723
Kaupapa Māori team	9%	18%	58%	145	147	155	166	166	151	153	157	151	158	152	148	170	149	147	713
Pacific people team	15%	7%	54%	110	110	109	111	127	110	109	111	108	116	109	110	120	111	111	296
Specialty team	6%	3%	29%	319	322	325	329	340	335	317	325	309	327	315	322	347	322	322	2,074
Total	4%	6%	19%	2,720	2,799	2,829	3,083	3,250	2,821	2,844	2,856	2,741	2,893	2,807	2,816	3,382	3,064	3,076	33,445
Inpatient services																			
Child and youth team	21%	27%	18%	109	126	128	167	185	127	115	143	122	171	122	152	265	156	160	958
Eating disorders team	0%		0%	0	1	0	0	1	0	0	0	0	0	0	0	3	0	0	67
Forensic team				0	0	0	0	0	0	0	0	0	0	0	0	4	2	2	37
Inpatient team	4%		4%	1	3	2	12	7	1	1	4	1	8	1	4	22	8	8	190
Specialty team	1%		0%	0	1	0	1	5	0	0	0	0	0	0	1	5	1	2	201
Total	15%	22%	12%	111	133	133	181	199	129	119	149	125	182	126	160	302	171	175	1,462

Notes: Percentage of invalid collections = the percentage of collections that had three or more of the 15 items scored as unknown or missing. Number of invalid ratings by HoNOSCA item = for each of the HoNOSCA items, the number of collections for which that item was unknown or missing. Discharge excludes collection types for lost to care, deceased and brief episode of care. Collection in drug and alcohol teams is not required, therefore AOD data is excluded.

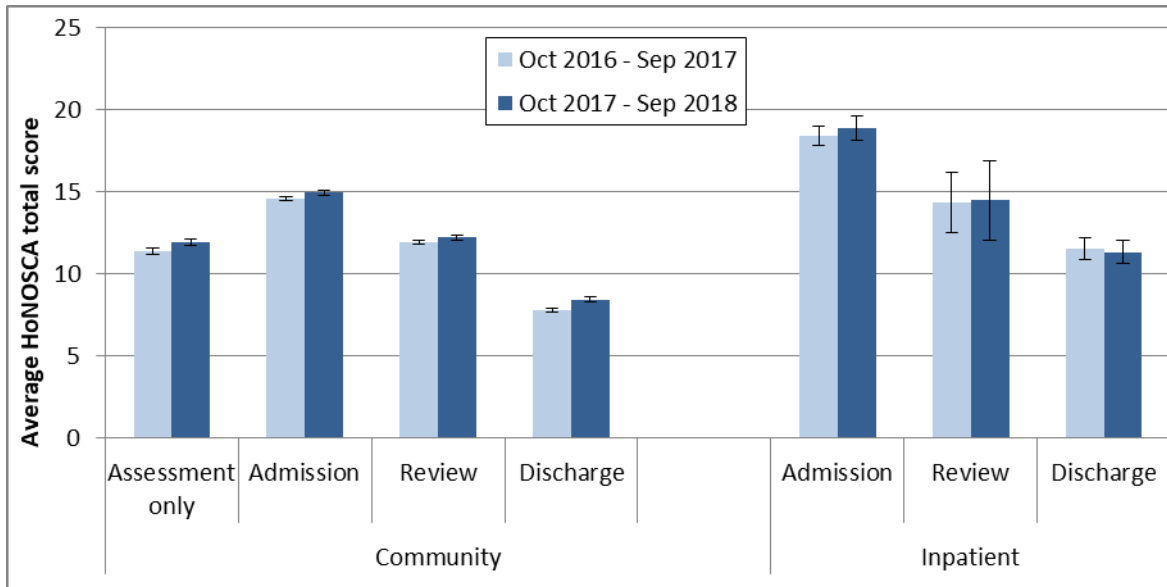
Interpretation: The lower the percentages of invalid collections by team, the higher the percentage of valid scores. The lower the number of invalid collections by HoNOSCA item, the more collections that have valid data on that HoNOSCA item.

Target: Aim for 95% valid collections (5% invalid collections) or better. Aim for as few invalid items as possible, with all items having a similar validity rate.

2. Outcomes – changes in service user status

This section presents HoNOSCA data indicating the status of service users at different stages of their contact with the DHB mental health services. Graph and Table 4 show results from HoNOSCA total scores. Graphs and Tables 5 to 7b show results related to the percentage of HoNOSCA items in the clinical range. Graph and Table 8 in this section show results from the Index of Severity derived from HoNOSCA scores.

Graph 4: Average HoNOSCA total score (15 items) by collection type, New Zealand, Oct 2016 - Sep 2017 and Oct 2017 - Sep 2018



Notes: Error bars indicate the confidence intervals around the data point. If error bars overlap, the data points are not significantly different. Community discharge does not include discharge to an inpatient unit.

Interpretation: Decrease between admission and discharge is an indication of the outcomes achieved by the service user and service. The greater the decrease between admission and discharge, and the lower the average HoNOSCA score at discharge, the more positive the outcome.

Target: A greater decrease from admission to discharge and lower average rating at discharge.

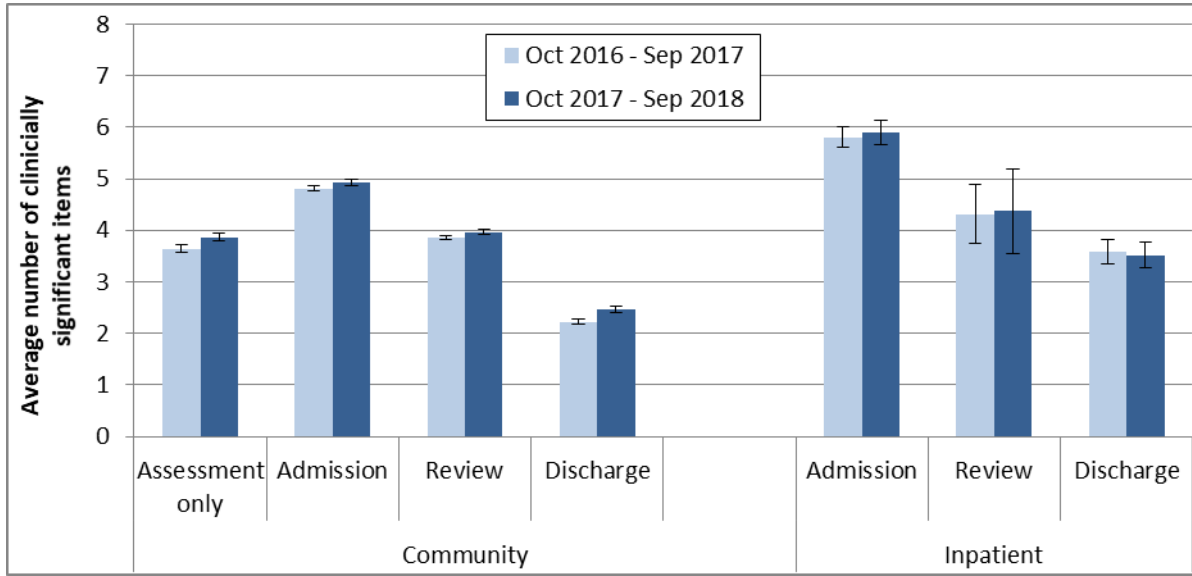
Table 4: Average HoNOSCA total score (15 items), by collection type and team, New Zealand, Oct 2017 - Sep 2018

Team type	Assessment only			Admission			Review			Discharge		
	N	Mean	CI	N	Mean	CI	N	Mean	CI	N	Mean	CI
Community services												
Alcohol and drug team	36	11.6	9.4-13.7	147	13.5	12.2-14.8	140	11.9	10.7-13.2	132	7.3	6.2-8.3
Child and youth team	3,820	11.8	11.6-12.0	6,866	15.1	14.9-15.2	8,955	12.3	12.2-12.4	6,226	8.5	8.4-8.7
Community team	225	12.7	11.8-13.6	131	13.4	12.2-14.6	66	11.3	9.6-13.1	48	6.3	4.6-7.9
Early intervention team				32	15.6	12.9-18.2	37	14.3	11.5-17.0			
Eating disorders team	23	12.1	8.6-15.6	165	16.2	15.1-17.2	330	12.4	11.5-13.4	87	7.0	5.4-8.6
Forensic team	240	14.6	13.7-15.4	179	16.1	14.7-17.4	79	15.1	13.5-16.6	87	15.3	13.5-17.1
Kaupapa Māori team	38	11.0	9.0-13.0	119	16.6	15.4-17.7	330	13.0	12.2-13.7	54	10.0	8.2-11.9
Pacific people team				35	12.4	9.9-14.9	57	10.8	9.5-12.1	90	6.7	5.5-7.8
Specialty team	77	11.7	10.5-12.8	350	12.4	11.7-13.1	606	10.3	9.7-10.8	523	7.3	6.8-7.8
Total	4,465	12.0	11.8-12.1	8,026	15.0	14.8-15.1	10,616	12.2	12.1-12.3	7,259	8.4	8.3-8.6
Inpatient services												
Child and youth team				410	20.0	19.0-21.0	57	14.4	11.4-17.3	299	12.6	11.7-13.4
Eating disorders team				38	13.7	10.9-16.4				30	10.3	6.7-13.9
Inpatient team				112	17.4	15.8-19.1				70	13.4	11.3-15.4
Specialty team				109	16.5	15.0-18.0				90	6.2	5.2-7.2
Total				689	18.9	18.2-19.6	76	14.5	12.1-16.9	499	11.3	10.6-12.0

Notes: N = number of collections in period. Average = average HoNOSCA (15 item) score, CI = confidence interval for average score. Community discharge does not include discharge to an inpatient unit.

Interpretation: If confidence intervals for two scores do not overlap, then the scores are statistically significantly different. It is important to note that statistical significance may not indicate a clinically significant difference.

Graph 5: Average number of clinically significant HoNOSCA items by collection type, New Zealand, Oct 2016 - Sep 2017 and Oct 2017 - Sep 2018



Notes: Average number clinically significant items = the average number of items in the clinical range (2, 3 or 4) per collection. Community discharge does not include discharge to an inpatient unit.

Interpretation: Points are significantly different if error bars don't overlap. Decrease between admission and discharge is an indication of the outcomes achieved by the service and service user. A greater decrease between admission and discharge indicates a better outcome. A lower admission score could be indication of service users seeking out and being engaged by services at a lower level of severity.

Target: A greater decrease from admission to discharge and smaller percentage in clinical range at discharge.

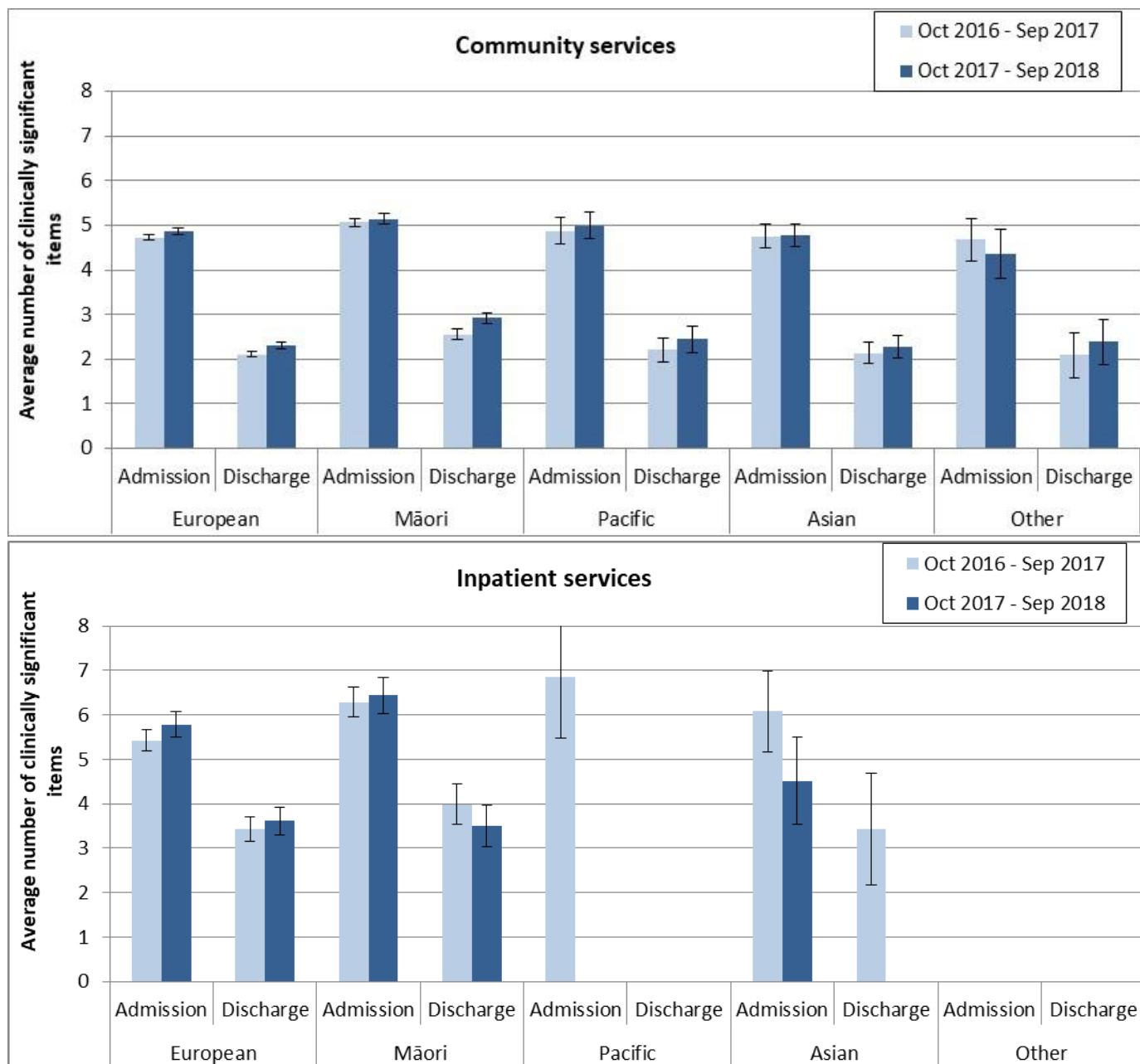
Table 5: Average number of clinically significant HoNOSCA items by collection type and team, New Zealand, Oct 2017 - Sep 2018

Team type	Assessment only			Admission			Review			Discharge		
	N	Mean	CI	N	Mean	CI	N	Mean	CI	N	Mean	CI
Community services												
Alcohol and drug team	36	3.4	2.5-4.3	147	4.2	3.7-4.7	140	3.5	3.0-3.9	132	2.0	1.6-2.4
Child and youth team	3,820	3.8	3.7-3.9	6,866	5.0	4.9-5.0	8,955	4.0	3.9-4.0	6,226	2.5	2.4-2.6
Community team	225	4.2	3.8-4.5	131	4.3	3.9-4.7	66	3.5	2.8-4.2	48	1.7	1.1-2.4
Early intervention team				32	4.8	3.8-5.9	37	4.1	3.2-5.1			
Eating disorders team	23	4.0	2.7-5.2	165	5.3	4.9-5.7	330	4.1	3.7-4.4	87	2.2	1.6-2.8
Forensic team	240	4.5	4.2-4.8	179	5.2	4.8-5.6	79	4.7	4.2-5.3	87	4.9	4.2-5.5
Kaupapa Māori team	38	3.2	2.4-4.0	119	5.3	4.9-5.7	330	4.1	3.8-4.4	54	2.6	1.9-3.4
Pacific people team				35	3.9	3.0-4.8	57	3.6	3.0-4.1	90	1.6	1.3-2.0
Specialty team	77	3.7	3.3-4.2	350	4.1	3.9-4.4	606	3.4	3.2-3.6	523	1.9	1.7-2.1
Total	4,465	3.9	3.8-3.9	8,026	4.9	4.9-5.0	10,616	4.0	3.9-4.0	7,259	2.5	2.4-2.5
Inpatient services												
Child and youth team				410	6.2	5.9-6.5	57	4.4	3.4-5.4	299	4.0	3.6-4.3
Eating disorders team				38	4.4	3.5-5.4				30	3.3	2.2-4.4
Inpatient team				112	5.5	4.9-6.0				70	4.1	3.4-4.8
Specialty team				109	5.3	4.8-5.8				90	1.8	1.4-2.1
Total				689	5.9	5.7-6.1	76	4.4	3.5-5.2	499	3.5	3.3-3.8

Notes: N = number of collections in period. Average = average number of HoNOSCA items in the clinically significant range (ie scoring 2, 3, or 4), CI = confidence interval for average score. Community discharge does not include discharge to an inpatient unit.

Interpretation: If confidence intervals for two scores do not overlap, then the scores are statistically significantly different. Please note that statistical significance may not indicate a clinically significant difference.

Graph 6: Average number of clinically significant HoNOSCA items at admission and discharge by ethnic group, New Zealand, Oct 2016 - Sep 2017 and Oct 2017 - Sep 2018

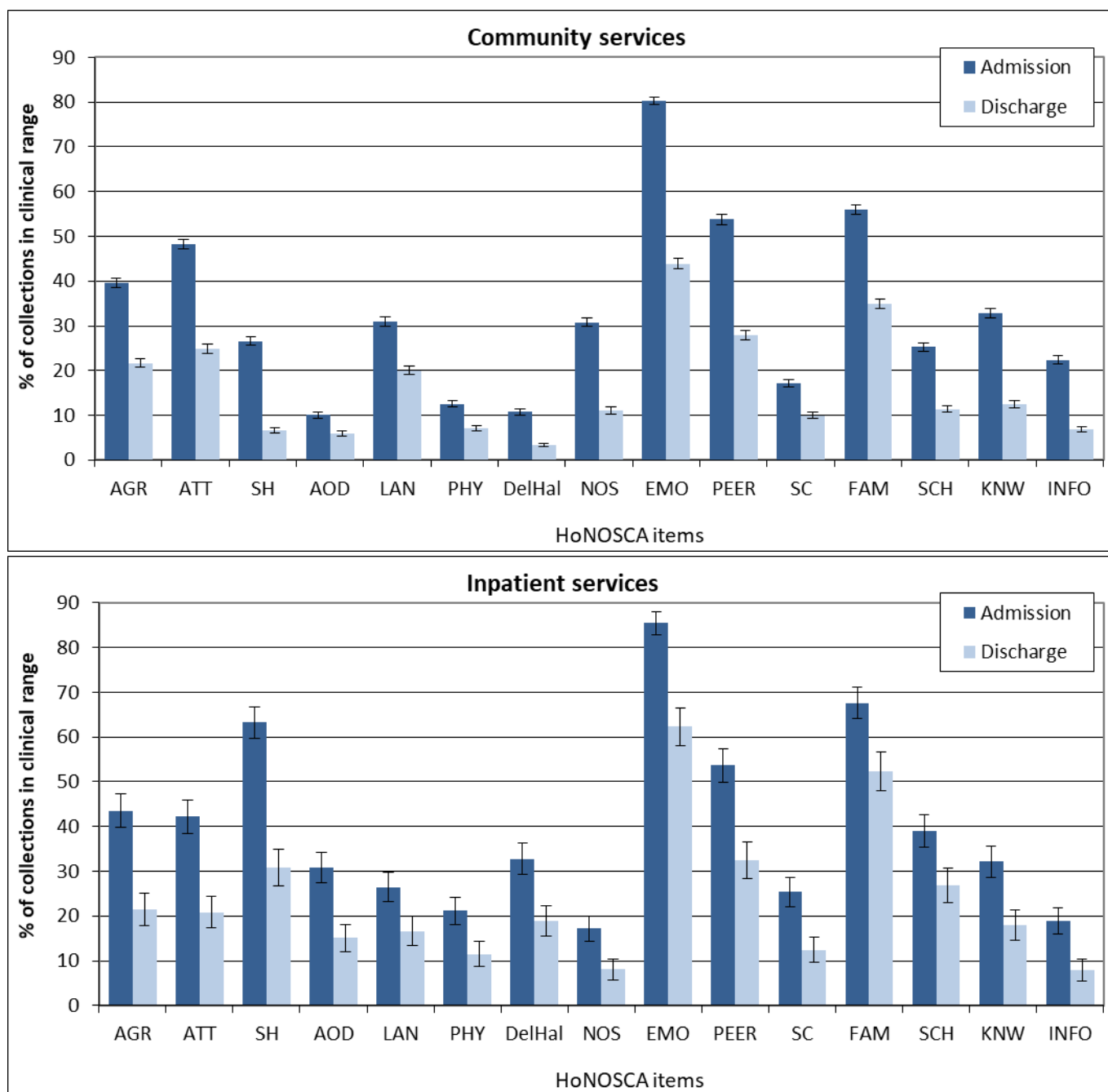


Notes: Average number of HoNOSCA items in the clinical range (2, 3 or 4). Community discharge does not include discharge to an inpatient unit.

Interpretation: Points are significantly different if error bars don't overlap. Decrease between admission and discharge is an indication of the outcomes achieved by the service and service user. A greater decrease between admission and discharge indicates a better outcome. A lower admission score could be indication of service users seeking out and being engaged by services at a lower level of acuity.

Target: A greater decrease from admission to discharge and smaller percentage in clinical range at discharge.

Graph 7a: Percentage of collections in clinical range on each HoNOSCA item, New Zealand, Oct 2017 - Sep 2018



Notes: Percentage of service users in the clinical range (2, 3 or 4) for each HoNOSCA item. Community discharge does not include discharge to an inpatient unit.

Interpretation: The longer the bar, the more prevalent the difficulty measured by the item is amongst service users. A greater decrease in the length of the bar from admission to discharge suggests a better outcome for the difficulty measured by the item. Items that show medium to high frequency and less change may suggest possible targets for service improvement.

Target: A greater decrease from admission to discharge and smaller percentage in clinical range at discharge.

Table 7a: Percentage of collections in clinical range on each HoNOSCA item (admission and discharge collections) by team, New Zealand, Oct 2017 - Sep 2018

Community services

First 7 HoNOSCA items																
Team name	N		AGR		ATT		SH		AOD		LAN		PHY		DelHal	
	Adm	Disch	Adm	Disch	Adm	Disch	Adm	Disch	Adm	Disch	Adm	Disch	Adm	Disch	Adm	Disch
Alcohol and drug team	147	132	35%	17%	27%	11%	22%	4%	67%	35%	16%	6%	7%	3%	7%	1%
Child and youth team	6,865	6,221	40%	22%	50%	26%	27%	6%	8%	5%	32%	21%	12%	7%	9%	3%
Community team	131	48	28%	13%	22%	10%	58%	15%	26%	10%	17%	6%	8%	6%	11%	2%
Early intervention team	32		13%		53%		13%		13%		56%		6%		53%	
Eating disorders team	165	87	24%	9%	35%	11%	20%	10%	5%	5%	11%	7%	53%	17%	64%	24%
Forensic team	179	87	61%	52%	51%	38%	18%	12%	55%	43%	36%	37%	7%	3%	8%	5%
Kaupapa Māori team	119	54	56%	22%	57%	20%	27%	13%	9%	11%	30%	20%	7%	11%	8%	2%
Pacific people team	35	90	29%	14%	26%	9%	20%	9%	12%	9%	25%	16%	9%	1%	20%	6%
Specialty team	350	523	25%	12%	35%	18%	24%	7%	8%	4%	24%	12%	10%	5%	9%	5%
Total	8,023	7,253	40%	22%	48%	25%	27%	7%	10%	6%	31%	20%	12%	7%	11%	3%
Second 8 HoNOSCA items																
Team name	NOS		EMO		PEER		SC		FAM		SCH		KNW		INFO	
	Adm	Disch	Adm	Disch	Adm	Disch	Adm	Disch	Adm	Disch	Adm	Disch	Adm	Disch	Adm	Disch
Alcohol and drug team	8%	5%	56%	26%	29%	20%	11%	5%	49%	32%	36%	17%	33%	11%	23%	8%
Child and youth team	33%	12%	82%	45%	55%	29%	17%	11%	56%	35%	24%	11%	33%	12%	22%	7%
Community team	11%	8%	82%	31%	40%	13%	8%	6%	63%	33%	28%	7%	19%	9%	12%	2%
Early intervention team	9%		56%		66%		31%		47%		41%		31%		13%	
Eating disorders team	26%	9%	88%	52%	42%	16%	52%	9%	41%	32%	29%	5%	26%	9%	17%	1%
Forensic team	13%	10%	66%	59%	44%	52%	4%	6%	72%	75%	42%	40%	35%	40%	24%	30%
Kaupapa Māori team	30%	15%	81%	31%	57%	33%	7%	11%	65%	31%	34%	11%	42%	19%	28%	13%
Pacific people team	9%	2%	57%	21%	42%	13%	3%	0%	57%	29%	33%	20%	29%	13%	31%	4%
Specialty team	29%	10%	73%	37%	47%	23%	14%	6%	42%	26%	21%	9%	33%	14%	25%	7%
Total	31%	11%	80%	44%	54%	28%	17%	10%	56%	35%	25%	11%	33%	13%	22%	7%

Inpatient services

First 7 HoNOSCA items																
Team name	N		AGR		ATT		SH		AOD		LAN		PHY		DelHal	
	Adm	Disch	Adm	Disch	Adm	Disch	Adm	Disch	Adm	Disch	Adm	Disch	Adm	Disch	Adm	Disch
Child and youth team	410	299	47%	24%	48%	24%	66%	36%	33%	18%	33%	20%	20%	9%	32%	20%
Eating disorders team	38	30	16%	13%	16%	10%	29%	17%	5%	3%	5%	7%	74%	40%	34%	27%
Inpatient team	112	70	46%	29%	36%	26%	63%	32%	24%	25%	17%	19%	13%	13%	32%	30%
Specialty team	109	90	32%	10%	30%	8%	74%	21%	31%	2%	11%	8%	13%	8%	34%	6%
Total	689	499	44%	21%	42%	21%	63%	31%	31%	15%	26%	17%	21%	11%	33%	19%

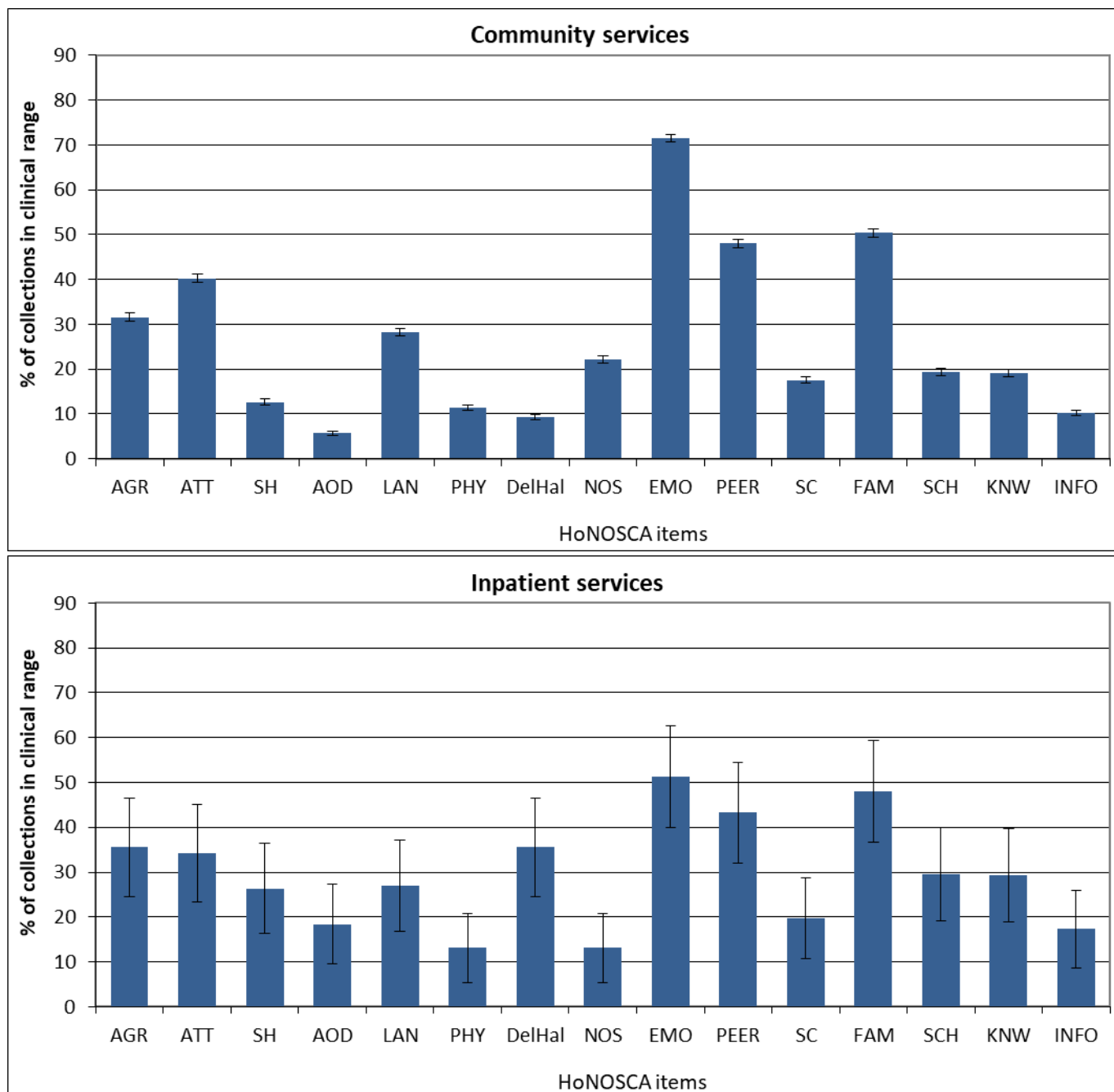
Second 8 HoNOSCA items																
Team name	NOS		EMO		PEER		SC		FAM		SCH		KNW		INFO	
	Adm	Disch	Adm	Disch	Adm	Disch	Adm	Disch	Adm	Disch	Adm	Disch	Adm	Disch	Adm	Disch
Child and youth team	16%	9%	83%	67%	56%	38%	31%	15%	70%	60%	40%	31%	36%	21%	20%	8%
Eating disorders team	16%	10%	87%	67%	34%	23%	21%	20%	50%	50%	27%	29%	24%	13%	5%	7%
Inpatient team	22%	10%	90%	70%	50%	39%	21%	14%	63%	45%	38%	30%	22%	19%	17%	12%
Specialty team	19%	1%	90%	41%	50%	12%	10%	1%	65%	34%	33%	16%	23%	7%	16%	3%
Total	17%	8%	85%	62%	54%	32%	25%	12%	68%	52%	39%	27%	32%	18%	19%	8%

Notes: Percentage of service users in the clinical range (2, 3 or 4) for each HoNOSCA item. Community discharge does not include discharge to an inpatient unit.

Interpretation: The higher the percentage, the more prevalent the difficulty measured by the item is amongst service users. A greater decrease between admission to discharge suggests a better outcome for the difficulty measured by the item. Items that show medium to high frequency and less change may suggest possible targets for service improvement.

Target: A greater decrease from admission to discharge and smaller percentage in clinical range at discharge.

Graph 7b: Percentage of collections in clinical range on each HoNOSCA item (review collections), New Zealand, Oct 2017 - Sep 2018



Notes: Percentage of service users in the clinical range (2, 3 or 4) for each HoNOSCA item on review collections. Due to most admission being less than 91 days, the data set for review collections in inpatient settings is relatively small.

Interpretation: The longer the bar, the more prevalent the difficulty measured by the item is amongst service users.

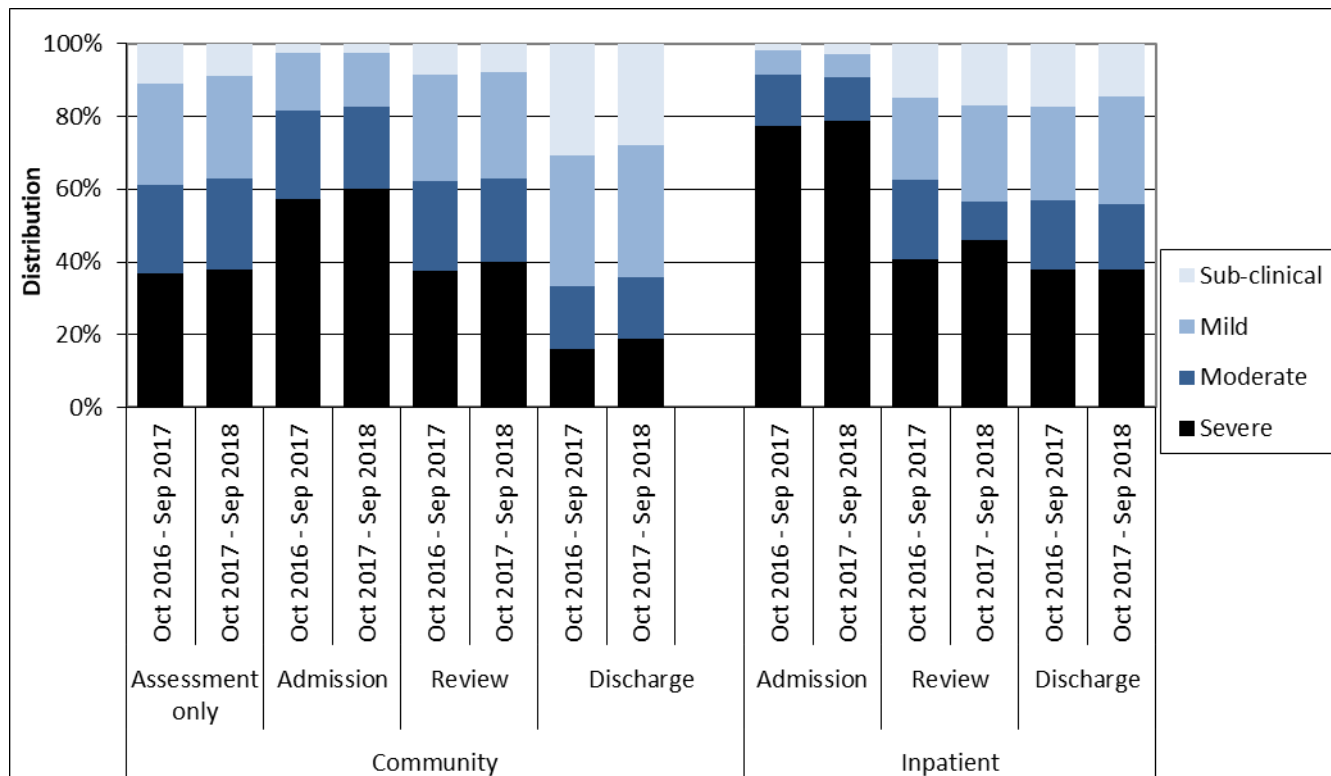
Table 7b: Percentage of collections in clinical range on each HoNOSCA item (review collections) by team, New Zealand, Oct 2017 - Sep 2018

Team type	N	AGR	ATT	SH	AOD	LAN	PHY	DelHal	NOS	EMO	PEER	SC	FAM	SCH	KNW	INFO
Community services																
Alcohol and drug team	140	30%	28%	4%	44%	17%	6%	6%	14%	55%	31%	7%	44%	32%	19%	12%
Child and youth team	8,951	32%	41%	13%	5%	29%	11%	8%	23%	73%	50%	17%	51%	19%	18%	9%
Community team	66	26%	21%	29%	14%	23%	9%	6%	11%	64%	39%	12%	59%	15%	14%	11%
Eating disorders team	37	14%	35%	16%	14%	40%	14%	41%	19%	65%	57%	16%	32%	31%	14%	11%
Forensic team	79	47%	49%	10%	32%	31%	5%	4%	10%	75%	58%	8%	80%	26%	29%	26%
Kaupapa Māori team	329	40%	49%	8%	7%	36%	5%	7%	11%	60%	53%	11%	46%	21%	34%	26%
Pacific people team	57	28%	37%	14%	9%	32%	5%	7%	5%	67%	45%	9%	51%	23%	16%	11%
Specialty team	606	20%	30%	14%	6%	18%	5%	7%	19%	67%	37%	20%	44%	20%	21%	13%
Total	10,610	32%	40%	13%	6%	28%	11%	9%	22%	71%	48%	18%	50%	19%	19%	10%
Inpatient services																
Child and youth team	57	33%	30%	32%	18%	25%	14%	30%	14%	54%	44%	23%	46%	31%	30%	18%
Total	76	36%	34%	26%	18%	27%	13%	36%	13%	51%	43%	20%	48%	30%	29%	17%

Notes: Percentage of service users in the clinical range (2, 3 or 4) for each HoNOSCA item on review collections. Due to most admission being less than 91 days, the data set for review collections in inpatient settings is relatively small.

Interpretation: The higher the percentage, the more prevalent the difficulty measured by the item is amongst service users.

Graph 8: Index of severity ratings for HoNOSCA by collection type, New Zealand, Oct 2016 - Sep 2017 and Oct 2017 - Sep 2018



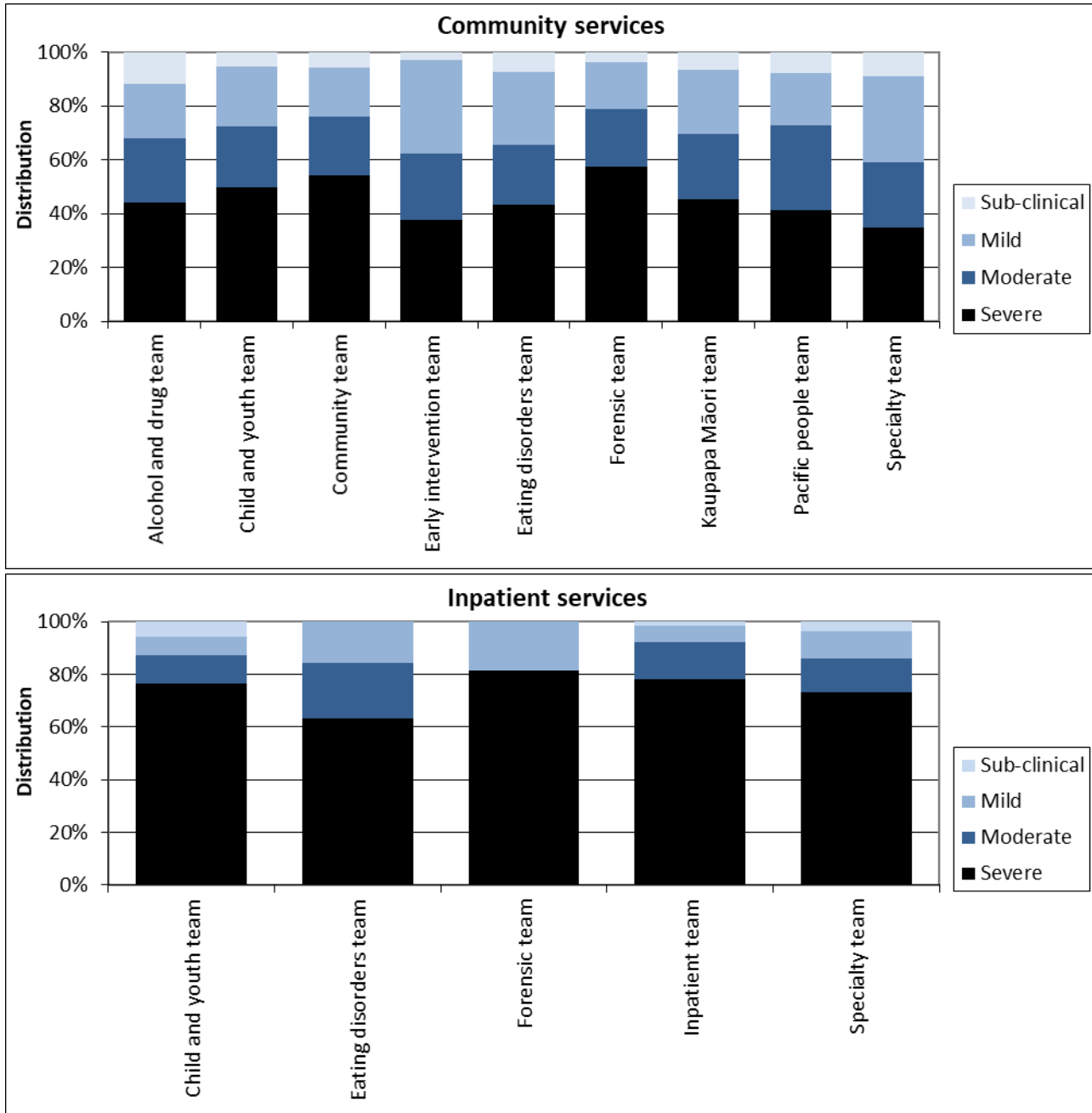
Notes: Community discharge does not include discharge to an inpatient unit. Index of Severity: Sub clinical = all items <2, mild = at least one item >1 and all items <3, moderate = at least one item >=3, severe = at least 2 items >=3 using first 13 items. Community discharge does not include discharge to an inpatient unit.

Interpretation: Darker bars indicate higher overall level of severity. More positive outcome shown by larger decrease in darker sections of bar between admission and discharge.

3. Other measures of service activity

This section presents other information related to data collected in PRIMHD that may be helpful for understanding how teams are operating. This includes information relevant to caseload intensity and team activity.

Graph 9: Index of severity for HoNOSCA (admission and review collections) by team, New Zealand, Oct 2017 - Sep 2018



Notes: Only data related to collection at admission and review is included so that results reflect the severity of service users during their engagement with the service. Index of Severity: Sub clinical = all items <2, mild = at least one item >1 and all items <3, moderate = at least one item >=3, severe = at least 2 items >=3 using first 13 items.

Interpretation: This graph gives an impression of the overall severity of the caseload for different teams at admission. The longer the darker bar, the higher the overall severity of the team’s caseload.

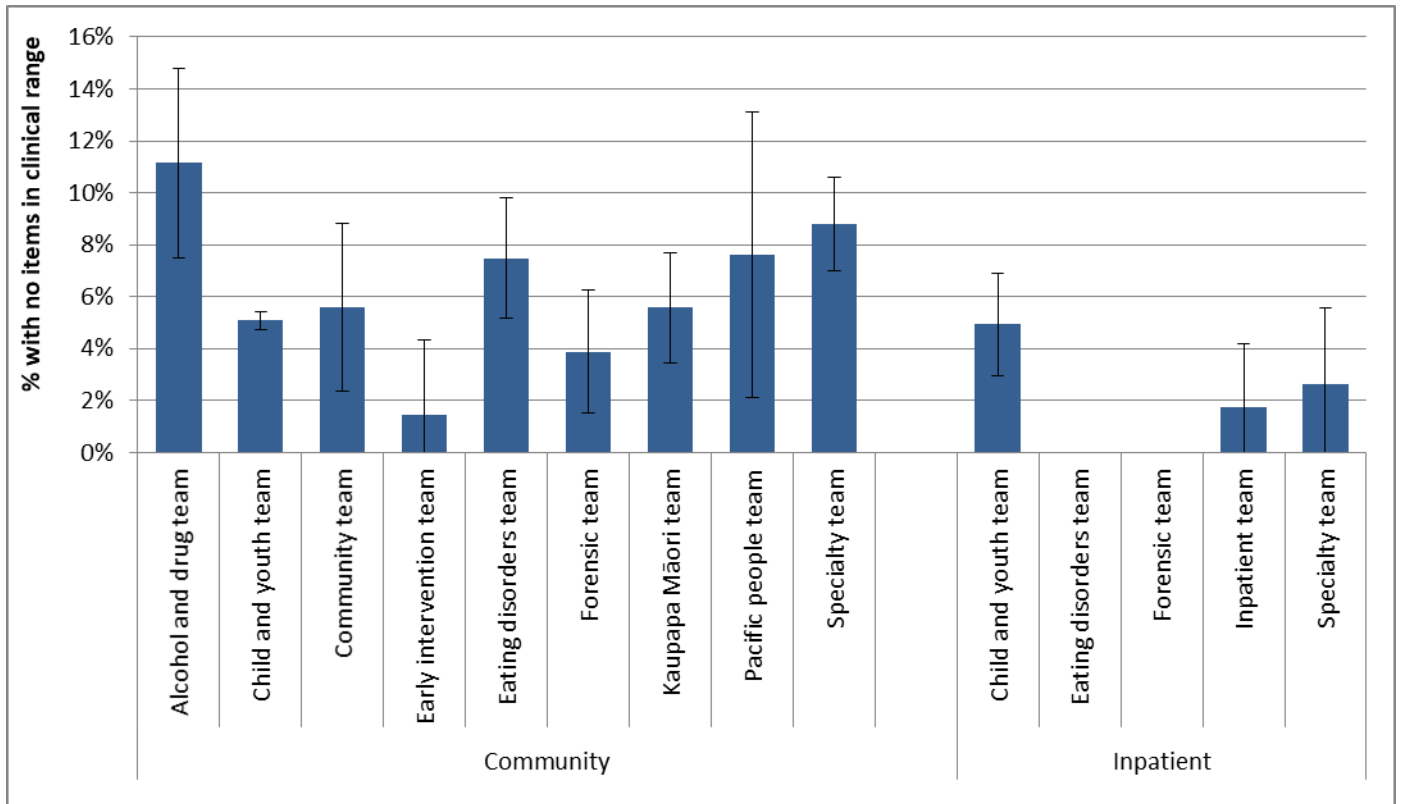
Table 9: Index of severity for HoNOSCA by collection type and team, New Zealand, Oct 2017 - Sep 2018

Team type	Assessment only					Admission					Review					Discharge				
	Sub	Mild	Mod	Sev	N	Sub	Mild	Mod	Sev	N	Sub	Mild	Mod	Sev	N	Sub	Mild	Mod	Sev	N
Community services																				
Alcohol and drug team	17%	25%	22%	36%	36	12%	16%	24%	48%	147	12%	25%	24%	39%	140	36%	30%	14%	20%	132
Child and youth team	10%	30%	25%	36%	3,820	2%	14%	22%	61%	6,866	8%	29%	23%	41%	8,955	27%	37%	17%	19%	6,226
Community team	2%	23%	24%	51%	225	5%	12%	20%	63%	131	8%	30%	26%	36%	66	42%	29%	13%	17%	48
Early intervention team						3%	38%	25%	34%	32	3%	32%	24%	41%	37	36%	38%	10%	16%	87
Eating disorders team	4%	39%	17%	39%	23	1%	10%	28%	61%	165	11%	35%	19%	35%	330	6%	24%	22%	48%	87
Forensic team	2%	15%	25%	58%	240	4%	18%	17%	60%	179	3%	15%	32%	51%	79					
Kaupapa Māori team	16%	32%	24%	29%	38	1%	12%	24%	64%	119	9%	28%	24%	39%	330	28%	37%	17%	19%	54
Pacific people team						14%	9%	29%	49%	35	4%	26%	33%	37%	57	40%	28%	19%	13%	90
Specialty team	6%	30%	36%	27%	77	2%	30%	25%	43%	350	13%	33%	24%	30%	606	40%	33%	14%	14%	523
Total	9%	28%	25%	38%	4,465	3%	15%	23%	60%	8,026	8%	29%	23%	40%	10,616	28%	36%	17%	19%	7,259
Inpatient services																				
Child and youth team						4%	5%	11%	80%	410	19%	23%	11%	47%	57	12%	26%	18%	43%	299
Eating disorders team						0%	16%	21%	63%	38						10%	43%	17%	30%	30
Inpatient team						2%	6%	14%	78%	112						10%	24%	16%	50%	70
Specialty team						2%	9%	12%	77%	109						26%	40%	19%	16%	90
Total						3%	7%	12%	79%	689	17%	26%	11%	46%	76	14%	30%	18%	38%	499

Notes: Sub = sub clinical, Mild = mild, Mod = moderate, Sev = severe on Index of Severity. Only admission collection data is included so that results reflect the severity of service users during their engagement with the service. Index of Severity: Sub clinical = all items <2, mild = at least one item >1 and all items <3, moderate = at least one item >=3, severe = at least 2 items >=3 using first 13 items. Community discharge does not include discharge to an inpatient unit.

Interpretation: Larger percentages in the columns to the right for each type of collection, the higher the overall severity of the team's caseload.

Graph 10: Collections with no HoNOSCA items in clinical range, New Zealand, Oct 2017 - Sep 2018



Notes: Includes admission and review collections. Shows percentage of service users with all HoNOSCA items less than two, ie no HoNOSCA items in the clinical range.

Interpretation: There are a variety of reasons that may make it appropriate for service users to remain in the service even though they show no HoNOSCA items in the clinical range. However, teams showing a larger or substantial percentage of service users with no HoNOSCA items in the clinical range could benefit from reviewing these cases to ensure that the service remains appropriate for this service user.

Table 10: Collections with no HoNOSCA items in clinical range, New Zealand, Oct 2017 - Sep 2018

Team type	Number of collections with no items in clinical range	Percentage with no items in clinical range
Community services		
Alcohol and drug team	32	11%
Child and youth team	803	5%
Co-existing problem team	11	6%
Community team	1	1%
Eating disorders team	37	7%
Forensic team	10	4%
Kaupapa Māori team	25	6%
Pacific people team	7	8%
Specialty team	84	9%
Total	1,010	5%
Inpatient services		
Child and youth team	23	5%
Eating disorders team	0	0%
Forensic team	0	0%
Inpatient team	2	2%
Specialty team	3	3%
Total	28	4%

Notes: For further information see notes for Graph 10.